

## FOCUS ON Gwinnett's Fleet Management Division Keeps 'em Rolling

– March 7, 2014



*Fleet Management's ASE-certified technicians help maintain a fleet of almost 3,000 vehicles, including police cars, fire engines, and ambulances.*

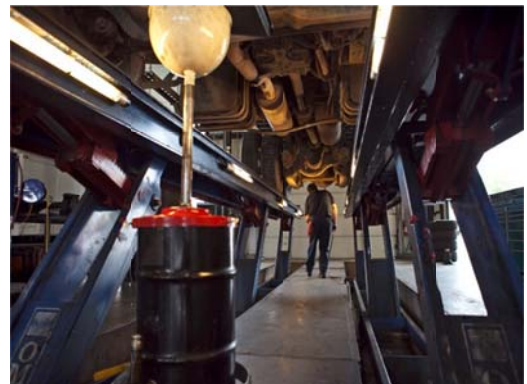
Fleet Management Director Michael Lindsey finds many folks are surprised that Gwinnett County owns and operates a fleet of almost 3,000 “rolling assets.” That includes the many police cars, fire engines, and ambulances that more than 850,000 Gwinnett residents depend on every day.

It's a big challenge to “keep 'em rolling,” so Fleet Service Manager Richard Martin is especially proud of the division's PACE Award from the Georgia Clean Air Campaign. “Our idle-reduction program cut diesel fuel consumption for the County by 19 percent overall for the last two years,” Martin said. The County also achieved 98 percent fleet availability last year.

At their shop on Swanson Drive in Lawrenceville, Fleet Services mechanics maintain and repair a wide variety of unusual vehicles, making sure they meet all safety and EPA regulations. They also oversee a preventive maintenance program that includes scheduling, budgeting, and preparing reports on cost, quantity, and quality of repairs.

They have received the Automotive Service Excellence (ASE) Blue Seal of Excellence for eight consecutive years and are one of only six agencies in the nation authorized to do warranty repair work on GM vehicles.

Deciding when to dispose of used vehicles is another aspect of Fleet Management operations. Last year, they recouped more than a million dollars by auctioning the County's used vehicles, selling many of them online at their own eBay store. To see what's currently up for sale there, go to: <http://stores.ebay.com/gwinnettcountyboc>.



On the other end of the process, Fleet Purchasing headed by Charlie Moshell ensures continuity and standardization of new vehicles, equipment and related components between County departments whenever possible so that employees have the safest, most cost-effective, best-value vehicles available.

*Fleet Services staff makes sure they meet safety and EPA regulations in addition to running a preventive maintenance program to keep vehicles running.*

Ben Hendrix makes sure there's fuel on hand to run all County vehicles plus thousands more from partner agencies such as Gwinnett County Public Schools. Eleven unmanned fuel sites pumped more than 6 million gallons of fuel into more than 6,200 vehicles last year. Ben's job includes managing safety, security, legal compliance, inventory, underground storage tank remediation, maintenance, and repairs.



*Eleven unmanned fuel sites pumped more than 6 million gallons of fuel into more than 6,200 vehicles last year.*

why we FOCUS ON a different group every month to show residents – and fellow employees – what it takes to keep things running smoothly 24 hours a day, seven days a week.

On the organization chart, Fleet Management falls under Director Angelia Parham's Department of Support Services, along with Facilities Management, Solid Waste and Recovered Materials, Property Management, and Fiscal Management.

Altogether, Support Services operates on a \$58 million budget with five operating funds and 14 cost centers. The department generated \$475,000 in revenue last year, including energy excise taxes.

Those who work behind the scenes to keep County services functioning don't normally get noticed. That's