



GIS Data Browser Basic User Manual

www.gwinnettcounty.com

Gwinnett County, GA: Home - Microsoft Internet Explorer provided by Gwinnett County Government

Address: <http://www.co.gwinnett.ga.us/cgi-bin/gwincty/egov/ep/home.do>

Welcome to Gwinnett

Home

mygwinnett Register Now

userid:

password:

Login as Employee

Forgot Password?

gwinnettcounty
e-government

Watch **tv**gwinnett
Channel 23 in Gwinnett County

Quick Links

- Unified Plan
- Board of Commissioners
- Chamber of Commerce
- Geographic Information Services
- Gwinnett Center
- Gwinnett Clean & Beautiful

The government of Gwinnett County, Georgia, welcomes you to this official website, where you'll find helpful information, resident services, and contacts for local officials. [How to use this site](#)

Water: Use more, pay more in summer

Summer water rates will be in effect from June through October. They are designed to conserve water and spread the cost of extra facilities needed to meet the peak demands of outdoor water use in the summer.

First tier:
\$3.47 per 1,000 gallons up to 125 percent of your average winter use

Second tier:
\$4.34 per 1,000 for gallons between 125 and 200 percent of your average winter use (minimum 10,000 gallons)

Third tier:
\$6.94 per 1,000 for gallons over 200 percent of your average winter use (minimum 12,500 gallons)

Example: Your average winter consumption was 6,000 gallons/month but you use 16,000 gallons in July. You will pay 10,000 gallons (\$34.70) plus \$4.34/1,000 for the next 2,500 gallons of water. Your total water consumption is \$34.70 + \$10.85 = \$45.55

Air Quality Forecast - Smog Season is from May 1 - September 30

The air quality forecast for May 08, 2007 is "Code Green (46 - Good)." Please visit [The Clean Air Commission](#) for additional information.

Click on GIS link

Gwinnett County, GA: GIS Data Browser - Microsoft Internet Explorer provided by Gwinnett County Government

Address: <http://www.co.gwinnett.ga.us/cgi-bin/gwincty/egov/ep/gcbrowse.do?channelId=20600&channelPage=%2Fchannel%2Fdefault.js>

GIS Data Browser

Departments > Support Services > Information Technology Services > Geographic Information Systems > GIS Data Browser

Support Services

- Citizen Self Service
- Administrative Services
- Facilities Management
- Fleet Management
- Gwinnett Glows
- Information Technology Services
 - Applications Development
 - Web Applications Development
 - Geographic Information Systems
 - GIS Data Browser**
 - Help Guides
 - FAQs
 - About Our Data
 - Data Sales
 - Data & Map Sales Online
 - How To Use GIS Data
 - Other Map Sources
 - Business Systems Group
 - Infrastructure
 - Operations & Technical Support
 - Program Management Office
 - Real Property Management

Geographic Information Systems Data Browser

Our online GIS browser lets you search our data with no special software required. You can easily locate any street, address or intersection in the county, print or email your map, or create a URL so others can easily go to the same data.

This GIS Data Browser will be down for maintenance each Saturday from 9:30pm through Sunday at 8:30am.

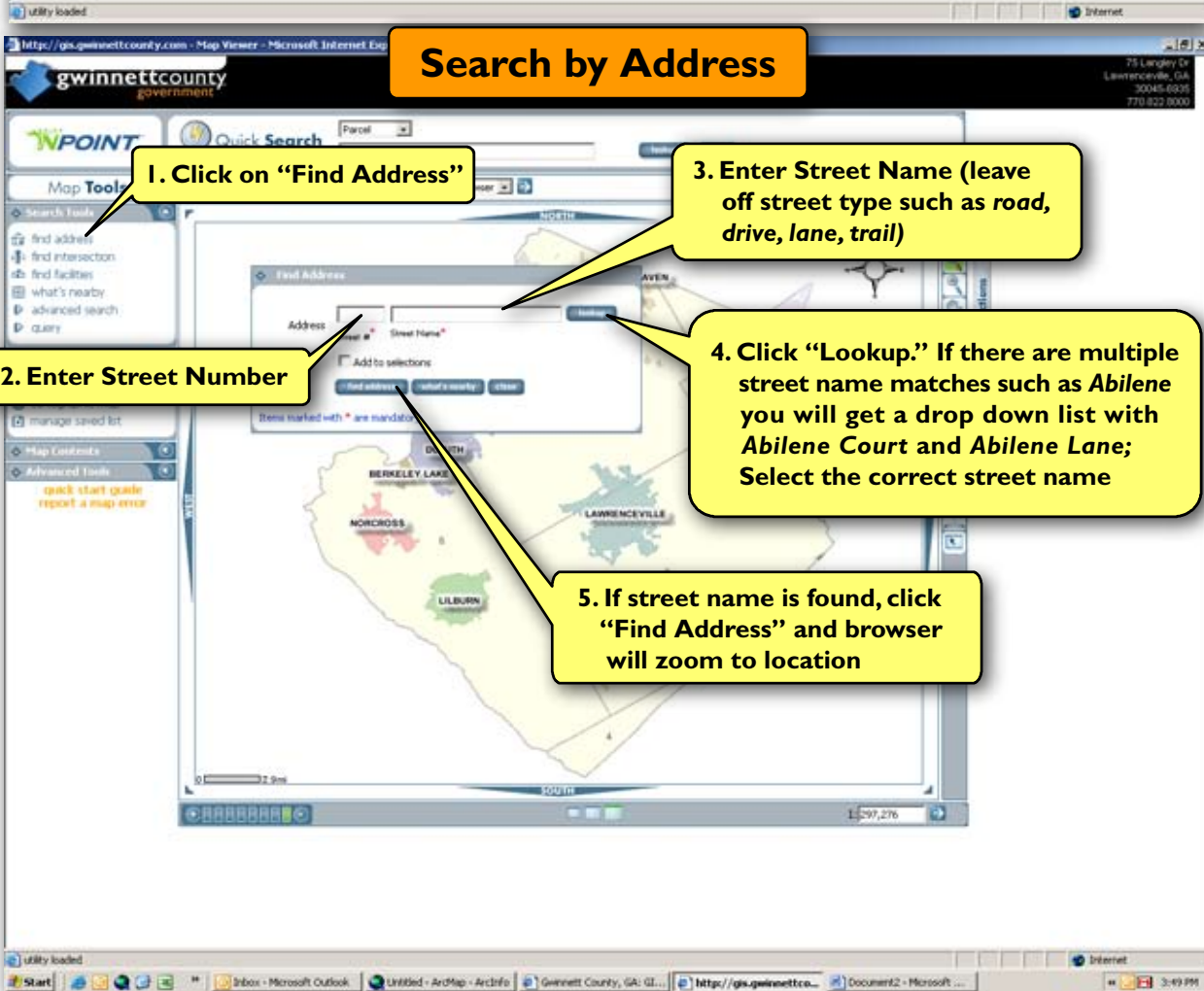
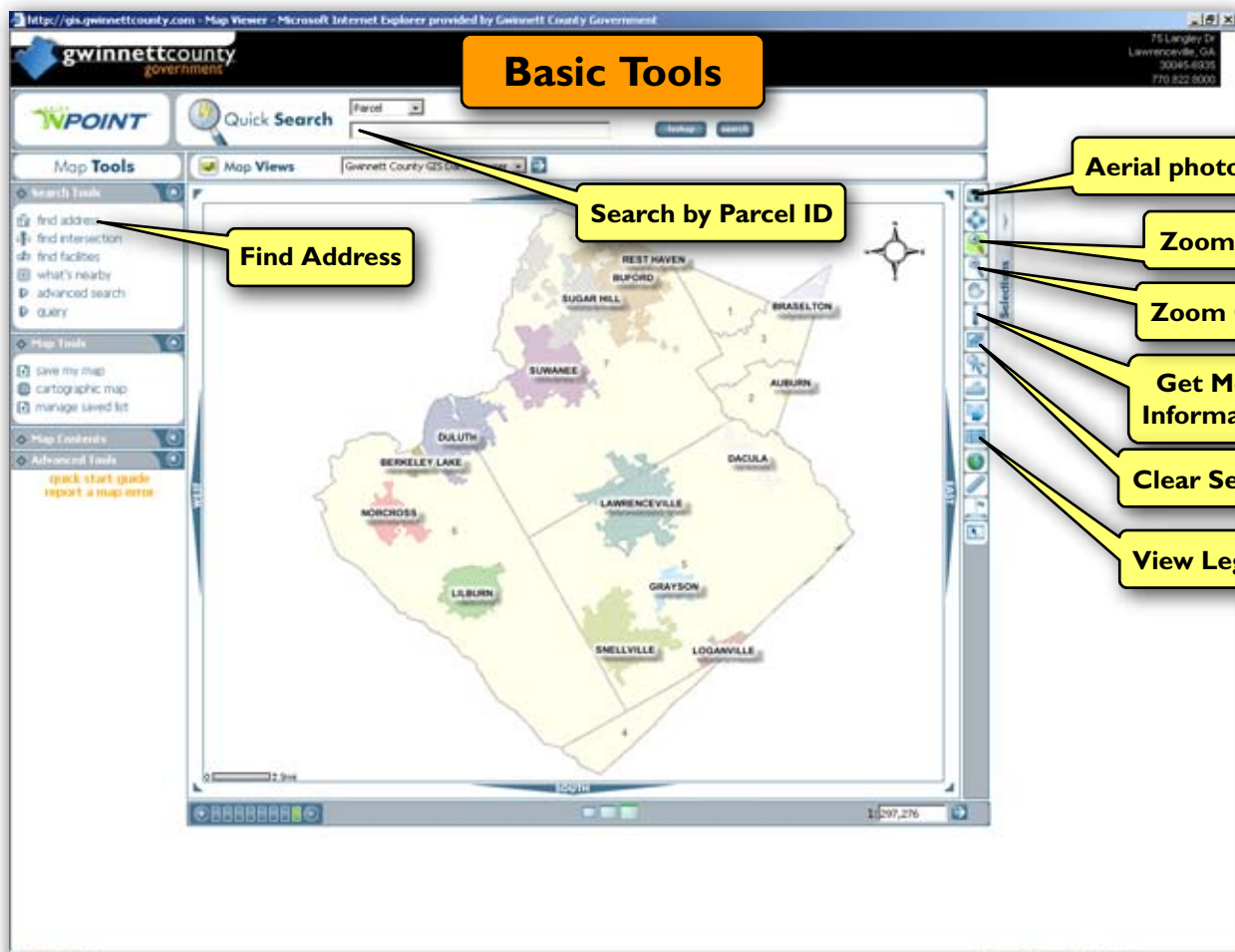
Click below to open the browser. Then click on the Quick Start Guide located on the left side of the browser page to help you get acquainted with the browser's tools and controls.

[Click here to accept the disclaimer below and open the GIS Data Browser.](#)

Disclaimer

This map is a graphical representation of data obtained from aerial photography, recorded deeds, plat maps, and other sources. It does not constitute a warranty or guarantee. PROVIDER ASSUMES NO LIABILITY FOR DAMAGES, EXPRESS OR IMPLIED, INCLUDING, BUT NOT LIMITED TO, THE IMPLIED WARRANTIES OF MERCHANTABILITY OR FITNESS FOR A PARTICULAR PURPOSE. This map is the proprietary product of Gwinnett County and in no event will Gwinnett County be liable for damages, including any loss of profits, lost savings, or other incidental or consequential damages arising out of the use of or inability to use this map.

Click on "GIS Data Browser"



Search by Parcel ID

1. Enter Parcel ID
Valid Format:
2002 001
or 3003 004B
or 1002B133

2. Click "Lookup"

3. Once parcel is found, click "Search"

District
Landlot
Parcel

selection list:
Listed: 1
5055 005

for selected items:
zoom to view details
view documents
save list retrieve list

View Attribute Data

2. Select feature by clicking on the location on map

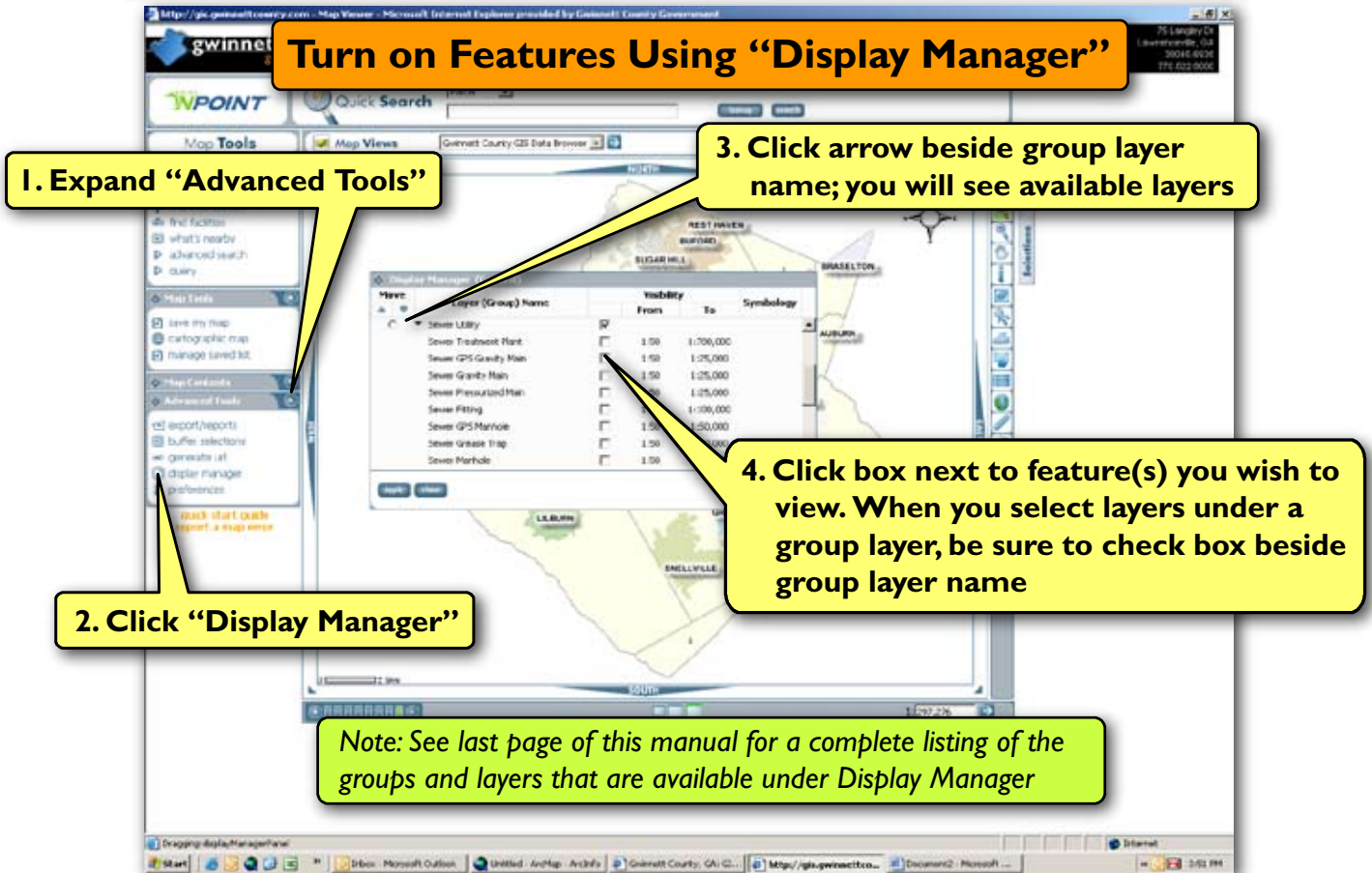
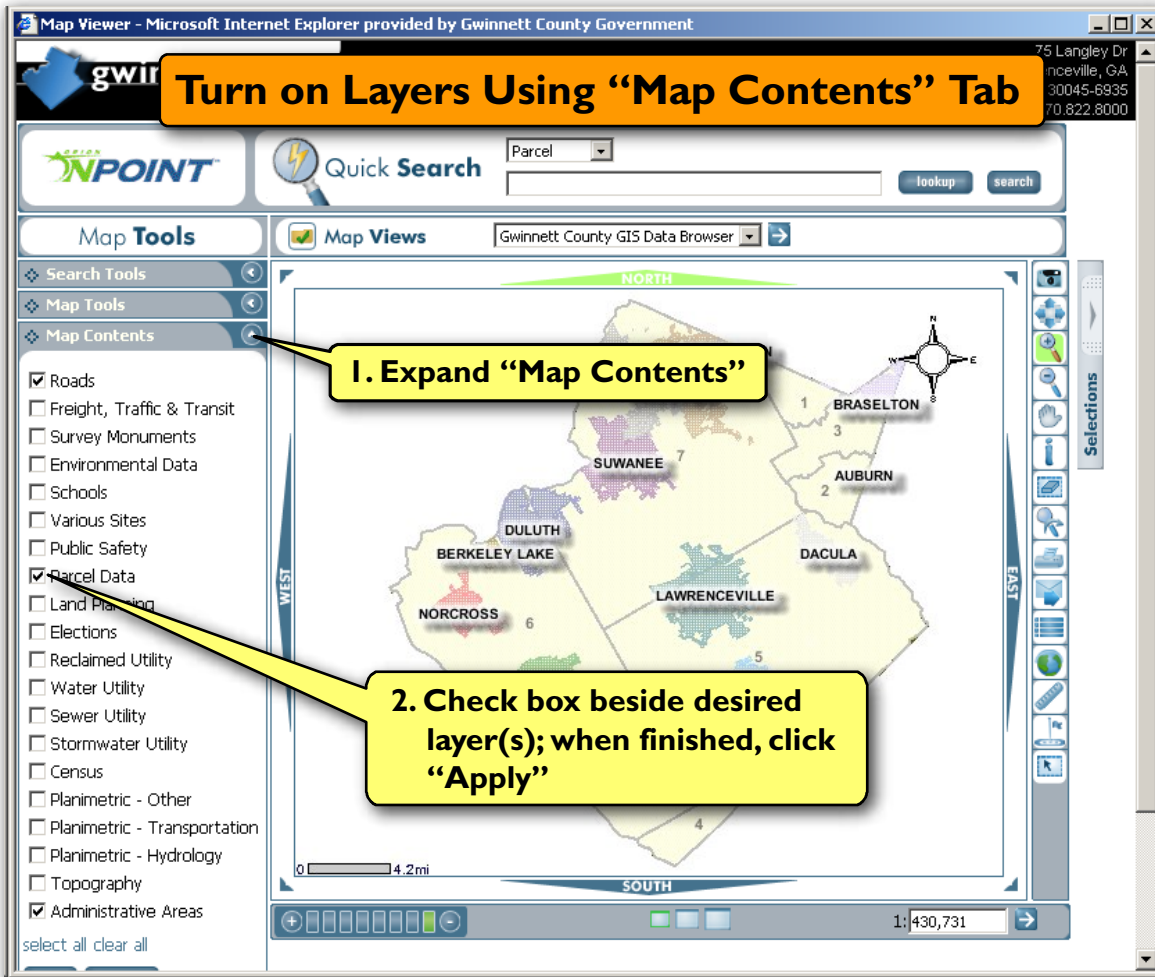
3. Make sure this box lists correct feature. If not, click on drop down box and select desired layer

4. Click on "Plus" sign to expand details

1a. Click "Get More Information" icon

1b. Alternative: Click "View Details," then go to Step 3

Attribute	Value
Pin	5055 005
Lot	
Assessor Information	
5055 005	
Owner Information	
Property Information	
Parcel Address	1329 JANMAR RD
Location Address	COUNTY
Location City/County	
Assessment	5127
Neighborhood	
Legal Description	3.0500 Ac.
Dwelling (appraised)	\$144400
Land Value (assessed)	
Total Value (assessed)	\$47000
Dwelling Value (assessed)	
Total Value (assessed)	\$99560
Zoning	R1
Zone Description	R100-Single Family Residence
Sales Information	
Stormwater Billing Information	



Map Viewer - Microsoft Internet Explorer provided by Gwinnett County Government

gwinnettcounty
government

75 Langley Dr
Lawrenceville, GA
30045-6935
770.822.8000

View Survey Monuments

Quick Search

Map Tools

Map Views | Gwinnett County GIS Data Browser

1. Click on "Map Contents"

2. Click box next to Survey Monuments

3. Click on "Apply" button

Map Contents

- Roads
- Freight, Traffic & Transit
- Survey Monuments
- Environmental
- Schools
- Various Sites
- Public Safety
- Parcel Data
- Land Planning
- Reclaimed Utility
- Water Utility
- Sewer Utility
- Stormwater Utility
- Census
- Planimetric - Other
- Planimetric - Transportation
- Planimetric - Hydrology
- Topography
- Administrative Areas

select all clear all

apply refresh list

Advanced Tools

Map

REST HAVEN
SUWANEE 7
AUBURN 2
DACULA
LAWRENCEVILLE
NORCROSS 6
SNELLVILLE LOGANVILLE 4

0 4.2mi

1:430,731

Selections

Layers Available Under Display Manager On the GIS Data Browser (Listed by Group)

ROADS

- Major Roads
- Street Centerlines
- Street Intersections

FREIGHT, TRAFFIC, TRANSIT

- Georgia Navigator Signs and Cameras
- Bridges
- Truck Routes
- Bus Routes

VIEW SURVEY MONUMENTS

ENVIRONMENTAL DATA

- Hazardous Sites
- Floodplain
- Soils
- Ground Recharge Areas

SCHOOLS

- School Sites
- School Parcels
- School Zones

VARIOUS SITES

- Hospitals
- Parks
- Restaurants
- County-owned Property

PUBLIC SAFETY

- Fire Stations
- Police Stations
- Police G-Zones
- Police Districts

PARCEL DATA

- Parcel Hooks
- Orivate Easements
- Land Parcel Address Labels
- Land Parcels
- Land Development Areas
- Neighborhoods (2004)

LAND PLANNING

- Zoning
- Existing Land Use (2002)
- 2020 Land Use Plan
- Overlay Districts

ELECTIONS

- Polling Locations
- Board of Education Districts
- Commission Districts
- Georgia House Districts
- U.S. House Districts
- Georgia Senate Districts
- Voter Precincts

RECLAIMED UTILITY

- Reclaimed Water Pressurized Mains

WATER UTILITY

- Water Network Structure
- Water Pressurized Mains
- Water Reducers
- Water Hydrants
- Water Pumps

SEWER UTILITY

- Sewer Treatment Plant
- Sewer Gravity Main
- Sewer Force Main
- Sewer Manhole
- Sewer Test Manhole
- Sewer Meters
- Sewer Pump Stations

STORMWATER UTILITY

- Impervious Areas
- Stormwater Inlets
- Stormwater Sinks
- Stormwater Bridge
- Stormwater Ditch Intersection
- Stormwater Closed Conduit
- Stormwater Ditches, Lakes, and Streams
- Stormwater Hydrology

CENSUS

- Census 2000 Block Groups
- Census 2000 Traffic Analysis Zones
- Census 2000 Tracts

PLANIMETRIC – OTHER

- Utility Point
- Single Trees
- Structures
- Recreation Features
- Barriers
- Buildings
- Vegetation
- Land Cover
- Utility Areas

PLANIMETRIC – TRANSPORTATION

- Major Transportation
- Minor Transportation
- Railroads

PLANIMETRIC – HYDROLOGY

- Hydrology Structures
- Hydrology Structure Points
- Hydrology Centerlines
- Rivers, Streams, and Lakes

TOPOGRAPHY

- Spot Elevations
- 2-Foot Elevations

2005 AERIAL PHOTOGRAPHY

2000 AERIAL PHOTOGRAPHY

ADMINISTRATIVE AREAS

- Aero Atlas Page Grid
- Key Grid
- Mapsheets
- Landlots
- Georgia Militia Districts
- Zip Codes
- City Limits
- Landlot Districts
- County Boundary