

Parks & Recreation

**ANNUAL REPORT
2011**

gwinnettcounty, georgia

Mission

In partnership with our citizens, Gwinnett County Parks and Recreation provides high quality, broad-based parks, facilities, programs and services creating a sense of community, enabling a safe and secure environment, and enhancing Gwinnett's quality of life.

Vision

Gwinnett County Parks and Recreation pledges to sustain the delivery of the highest standard of excellence of parks, facilities, programs, and services by:

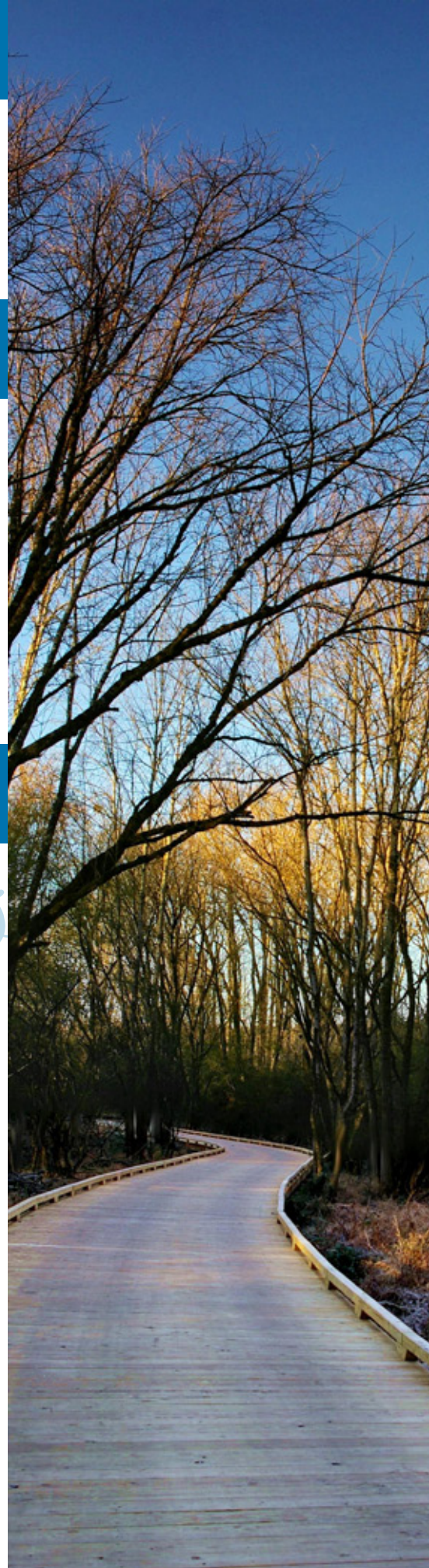
- Being responsive to the changing recreational needs of a diverse and growing community
- Continuing a citizen-driven and professional approach to provide safe, well designed and maintained facilities and programs
- Providing responsible stewardship of human, fiscal, natural, and historic resources
- Maximizing community resources

Values

- We believe in honesty, integrity and ethical conduct
- We are customer-oriented and both accountable and responsive to our citizens
- We believe in teamwork and collaboration with our community partners
- We promote safety, cost efficiency, innovation, and service excellence



gwinnettcounty
parks & recreation



About Parks and Recreation

Managing Staff

Division Director, Parks and Recreation Operations
Division, Director, Parks and Recreation Project Administration
Deputy Director of Park Operations
Manager, Aquatics
Manager, Recreation
Manager, Support Services
Manager, Grounds Maintenance
Manager, Development/Construction

Tina **Fleming**
Grant **Guess**
David **Clark**
Jim **Cyrus**
John **Register**
David **McGaughey**
Eric **Horne**
Don **Hafner**

In Gwinnett County there truly is something for everyone. With 44 parks and facilities throughout the county, GCPR strives to provide Gwinnett residents with quality recreation and leisure opportunities, serving all ages, interests, and levels of physical ability. GCPR offers a wide variety of classes, camps, programs, and sports leagues to satisfy nearly every Gwinnett resident.

Gwinnett County's park system is home to 150 multi-purpose sport fields with two featuring an overlay football field, nine aquatic facilities housing 17 bodies of water including indoor competition, instructional, lap and leisure/water park pools and outdoor leisure/water park pools, community and senior recreation centers, gymnasiums and activity buildings, playgrounds, dog park areas, outdoor tennis, sand volleyball and basketball courts, skate parks, miles of multi-purpose trails, and historical and nature sites. In addition, the Board of Commissioners' successful greenspace preservation program, supported by the 1997, 2001, 2005, and 2009 Special Purpose Local Option Sales Tax (SPLOST) allows Gwinnett residents the opportunity to enjoy the county's precious natural resources.

The Gwinnett County Recreation Authority is a legal advisory board comprised of nine-members appointed by the Board of Commissioners, including two representatives from each of the four commission districts, plus one chairman-appointed member. The board typically meets on the second Thursday of the month.

District 2	Jack Bolton
District 4	Myron Bullock, Jr.
District 3	Dr. Steven Flynt
District 1	Debbie Hale
District 4	Allen Harkness
District 1	June Hawkins
District 3	Greg Hutzell
District 2	Mark Ogden
Chairman	Appointment H. S. "Chip" Randall



*Tina Fleming
Division Director
Operations*



*Grant Guess
Division Director
Project Administration*

About Parks and Recreation

Two divisions make up Parks and Recreation, which falls under the Department of Community Services:

- Parks and Recreation Project Administration
- Parks and Recreation Operations

Parks and Recreation Project Administration Division

Charged with evaluating potential park sites, reviewing boundary surveys, and preparing feasibility studies, the Project Administration staff is responsible for environmental assessment reports, geotechnical analyses, park designs, oversight of renovation and capital improvements to existing parks and facilities, master planning parks and construction of new parks. Once land is purchased for a park, planning staff works with citizen steering committees to create a master plan. These committees consist of members of neighboring communities and park users.

2011 Project Administration Highlights

- Installed new artificial turf field at Cemetery Field to reduce operational expense and increase athletic field rentals
- Opened the renovated Bethesda Park Senior Center. This renovation provided new finishes within the facility as well as made it more energy efficient. Funding from a CDBG grant supplied Energy Star kitchen appliances to replace ageing, less efficient ones in the center's kitchen
- Renovated Collins Hill Park Aquatic Center. This project included re-plastering of the pool, and repair of the grates and sump for the circulation system, the addition of more efficient pool filters, and painting of the natatorium, locker rooms, and lobby
- Major new park construction began at Bryson Park in the Lilburn area as well as major expansions at Rabbit Hill Park and Harbins Park. Each park is design to expand the athletic field capacity of a county that has seen its elementary school age population continue to increase
- 2010 Park Land Acquisition Analysis Update Report was completed using the demographic information from the 2010 Census



Parks and Recreation Operations Division

Charged with maintaining, operating, and public awareness and safety of the county's park system and recreation facilities, the Operations Division staff is responsible for providing quality parks, programs, and services to meet the broad-based needs of the citizenry in Gwinnett.

Recreation Operations: Programming and Resources and Marketing

Recreation general programming staff and youth athletic facilitators provide countywide services that are divided into four geographic areas: north, south, east, and west. Other countywide specialized program areas include aquatics, heritage, seniors, cultural arts, adult athletics, and tennis. Recreation staff operates and maintain recreation facilities, schedule facility rentals, facilitate citizen meetings, plan and schedule classes, workshops, summer camps, adult athletic leagues, and special events throughout the county. Recreation staff also fosters volunteer/community services in county parks and recreation facilities and in programs/service delivery.

Resources and Marketing is responsible for creating awareness of the County's park system and the many recreation opportunities that GCPR provides for the community. This awareness is created through publications, the GCPR website, TVgwinnett (Gwinnett County's cable access channel), and media relations. Additionally, Resources and Marketing plans special events, prepares PowerPoint presentations on various aspects of GCPR, makes informative presentations to groups and other organizations, works closely with nonprofit organizations such as the Gwinnett Parks Foundation, prepares local, state, and national award nominations, and creates invitations, flyers, advertisements, news releases, presentations, and brochures.

2011 recreation programming and resources and marketing highlights

- The Resources and Marketing Section distributed 34 news releases regarding park happenings to local media
- The Resources and Marketing Section had 18,052 e-alert subscriptions for Gwinnett L.I.F.E. and marketed 127 events through online sources
- Celebrated July as National Park and Recreation Month (NRPA) by hosting six events with a Get Up, Get Out marketing campaign
- Celebrated Older American Month in May by hosting six events with a Seasoned with Thyme marketing campaign
- Implemented advertising plan for Gwinnett L.I.F.E. and scoreboards
- Developed and implemented film permit procedures for Gwinnett County parks and facilities
- Launched new marketing strategies and rebranding of the Gwinnett Parks Foundation website and social media presence for increased visibility to the public



Parks and Recreation Operations Division

- In partnership with Archer Athletic Association, Mountain View Athletic Association, and Dacula Soccer Club, held groundbreaking for the Harbins Park expansion and the Rabbit Hill Park expansion – September 30, 2011
- In partnership with Norcross Youth Athletic Association, held a ribbon cutting for turf installation at Cemetery Field Park – August 12, 2011
- Ivy Creek Greenway ribbon cutting – November 9, 2011
- Kids Fishing Day was held at Jones Bridge Park in collaboration with various community partners – over 700 registered
- Gwinnett County Parks and Recreation had 47,770 athletes involved in youth sports through the partnership with 27 youth athletic associations.
- The 24th annual Lighting of the Tree occurred on Thanksgiving Day, November 25 with over 12,000 people on the grounds of the Gwinnett Historic Courthouse on the square in downtown Lawrenceville for this traditional event
- The Aquatic Section had over 575,000 visitors enjoying the pools
- Ten Senior Recreation Clubs met each month at various GCPR facilities to enhance the recreational, fellowship, and educational experience for Gwinnett's seniors, totaling 490 members
- Number of scheduled facility use – 11,298
- Gwinnett County Parks and Recreation hosted 511 adult sports teams playing 3,000 games
- The Aquatic Section had combined participation from 31,660 senior citizens in water exercise classes at Bethesda Park, Bogan Park, and Mountain Park Aquatic Centers
- Summer camp program: 1,309 kids registered for general day camps, and 424 registered for the 41 specialty camps, 129 Inclusion campers
- First year for TILT training, CITs were better prepared for camp and demonstrated skills on a regular basis that they learned in training. CIT hours for all camps – 6,454
- The Volunteer Resources Section coordinated 11 Scout projects
- The Volunteer Resources Section led the effort in 44 volunteer workdays/events for a total of 40,717 hours of service

Park operations: grounds maintenance

Grounds Maintenance includes four districts: north, south, west, and conservation parks and is responsible for all the general/basic care and upkeep for all parks in the County's park system. Turf, trails, and natural resource management, mowing and fertilization of passive and athletic sport fields, sports field game preparation, tree and shrub care, playground inspection and maintenance, grounds and buildings janitorial, and litter/refuse removal all are basic components of the scope of quality service afforded by the grounds maintenance staff.

Park operations: support services

Support Services includes six main units: Electrical, Plumbing, Carpentry, Field Support, Contractual Services, and Warehouse Operations. These units are involved in the maintenance of all facility systems (HVAC, plumbing, electrical, lighting, irrigation, building structural, painting, key locking system), fleet maintenance coordination, athletic/security lighting, site electrical/plumbing all covering community centers, activity buildings, aquatic centers, specialized facilities, athletic fields and all general park areas throughout the parks system.



Parks and Recreation Operations Division

2011 park operations highlights: grounds maintenance and support services

- Grounds Maintenance managed:
 - Over 105 miles of trails
 - 150 sports fields
 - 63 playground units
 - Over 695,000 square feet of Sports Field turf
- Support Services received 2,893 service requests, with a 95 percent overall completion rate.
 - 646 plumbing
 - 505 electrical
 - 398 carpentry
 - 883 field support
 - 461 contract management
 - Managed 19 annual contract services agreements



Financial Summary

Parks and Recreation Capital History

Revenues	2010	2011
Recreation Tax*	\$ 3,855,707	\$ 2,500,000
Grants	0	100,000
General Tax/Other	32,968,995	35,110,083
Total	\$ 36,824,702	\$ 37,710,083

Expenditures	2010	2011
Capital Improvements and Equipment	\$ 11,642,302	\$ 24,422,051

*Funds receipted in operating fund and transferred to capital to be expense

2011 Parks and Recreation Revenue and Expenditures

Revenues	2011
General Fund	\$ 385,804
Recreation Tax	25,910,786
User Fees	5,036,008
Other Revenues/Dividends	7,955
Total	\$ 31,340,553

Expenditures	
Personal Services*	\$ 14,638,239
Supplies	9,318,142
Other Changes/Services**	2,889,683
Contribution Capital	2,582,330
Bonded Debt Service	0
Total	\$ 29,428,394

*Includes OPEB Transfer

**Includes Springbrook Payment

2011 at a Glance

Total park land acreage	9,282
Number of operational parks	44
Number of Recreation/Community Centers	12
Number of Senior Recreation Centers/designated area	2
Number of Tennis Courts	51
Number of Outdoor Basketball/Multi-use courts	31
Number of miles of bike/walking/hiking trails	105
Number of Competition and Leisure/Play Pools	17
Number of Skate Parks	7
Number of Cultural/Historic sites	6
Number of Playgrounds	63
Number of Dog Park Areas	6
Number of Special Needs Multi-use Sport fields	6
Number of classes, programs, camps, and events offered	6,047
Number of parks under development or renovation	4
Number of parks master plans completed	1
Number of groundbreakings for new parks	2
Number of parks and facilities opened	1
Number of parks/facilities renovated	1
Number of participants enrolled in recreation classes	78,389
Number of recreation and athletic summer camps offered	424
Total participation in summer camps	1,862
Number of Youth Athletic Associations (YAA)	27
Enrollment participation of children in YAA programs	47,770
Number of participants in adult sports leagues	8,719
Number of participants in aquatics classes/lessons	81,311
General attendance at county pools	575,000
Number of facility and specialized facility use	11,298
Facility rental participation	814,026

2011 at a Glance

Acreage of developed parkland maintained by staff	2,893
Number of multi-purpose sports fields maintained by staff	150
Number of work orders for plumbing, electrical, carpentry, field support	2,893
Number of volunteer hours (<i>this does not include Youth Athletic Association</i>)	40,717

Volunteers

- The Volunteer Resources Section coordinated 11 Scout projects
- The Volunteer Resources Section led the effort in 44 volunteer workdays/events for a total of 40,717 hours of service
- Gwinnett County Parks and Recreation had 47,770 athletes involved in youth sports through the partnership with 27 youth athletic associations
- The Volunteer Resources section secured \$125,946 in grant funding/donations
- The Volunteer Resources section hosted a volunteer reception (February 2, 2012) to honor 2011 volunteers. Thirteen Gold, 27 Silver, and 37 Bronze Volunteer Presidential Awards were awarded. Ninety-one Volunteer in Parks (VIP) awards were also presented to volunteers

Gwinnett Parks Foundation

The Gwinnett Parks Foundation is a 501(c)(3) charitable organization established to support GCPR programs and services. Foundation volunteers advocate quality of life through citizenry awareness of the county's park system and recreational opportunities and assist GCPR with various programs including: the Park Park'nership Program, the Commemorative Program, and other planned eventse, which raises funds for youth and senior citizen recreation scholarships.



Community Partnerships

- Alpharetta-Johns Creek Kiwanis
- American Hiking Society
- Archer Athletic Association
- Atlanta Fire United Soccer Association
- Best Friend Club
- Bogan Gold Wing Club
- Brookwood Baseball/Softball Association
- Brookwood Football
- Brookwood Lacrosse
- Buford School System
- City of Duluth Recreation Department
- City of Lawrenceville
- City of Snellville Recreation Department
- City of Sugar Hill Recreation Department
- Collins Hill Athletic Association
- Collins Hill Stingrays
- Dacula Athletic Association
- Dacula Dolphins
- Dacula Rainbow Senior Recreation Club
- Dacula Soccer Club
- Duluth Youth Athletic Association
- Evergreen Club
- Georgia DNR
- Georgia Futbol Club
- Get Kids Fishing Foundation
- Get Up and Go Senior Recreation Club
- Good Age Senior Recreation Club
- Grayson Athletic Association
- Greater Lilburn Athletic Association
- Gwinnett Chamber of Commerce
- Gwinnett County Board of Education
- Gwinnett Disc Golf Organization
- Gwinnett Federal Swim League
- Gwinnett Historical Society
- Gwinnett Humane Society
- Gwinnett Master Gardeners
- Gwinnett Masters Special Olympics
- Gwinnett Medical Center
- Gwinnett Parks Foundation
- Gwinnett Rose Society
- Gwinnett Senior Golden Games
- Gwinnett SenioR Learning Center
- Gwinnett Sports Commission
- Gwinnett United in Drug Education (GUIDE)
- H2U
- Lanier Athletic Association
- Lawrenceville Fun Time Senior Recreation Club
- Lawrenceville Tourism and Trade Association
- Lawrenceville Woman's Club
- Lawrenceville Youth Athletic Association
- Liberty National Volunteer Match
- Metro Atlanta Senior Softball Association
- Mill Creek Athletic Association
- Mountain Drifters Senior Recreation Club
- Mountain Park Athletic Association
- Mountain Park Sharks
- Mountain View Athletic Association
- National Alliance for Youth Sports – Youth Sports Expo
- Norcross Baseball/Softball Association
- Norcross Soccer Association
- Norcross Youth Athletic Association
- North Gwinnett Baseball/Softball Association
- North Gwinnett Football Association
- North Gwinnett Lacrosse Association
- Nothing But Fish
- Peachtree Boosters Club
- Peachtree Ridge Athletic Association
- Ricoh Electronics
- SafeKids Gwinnett
- Senior Recreation Council
- Shiloh Athletic Association
- Shorty Howell Hi-Steppers Senior Recreation Club
- South Gwinnett Athletic Association
- Suwanee Goodtimers Senior Recreation Club
- Trout Unlimited
- Vines Garden Railroad

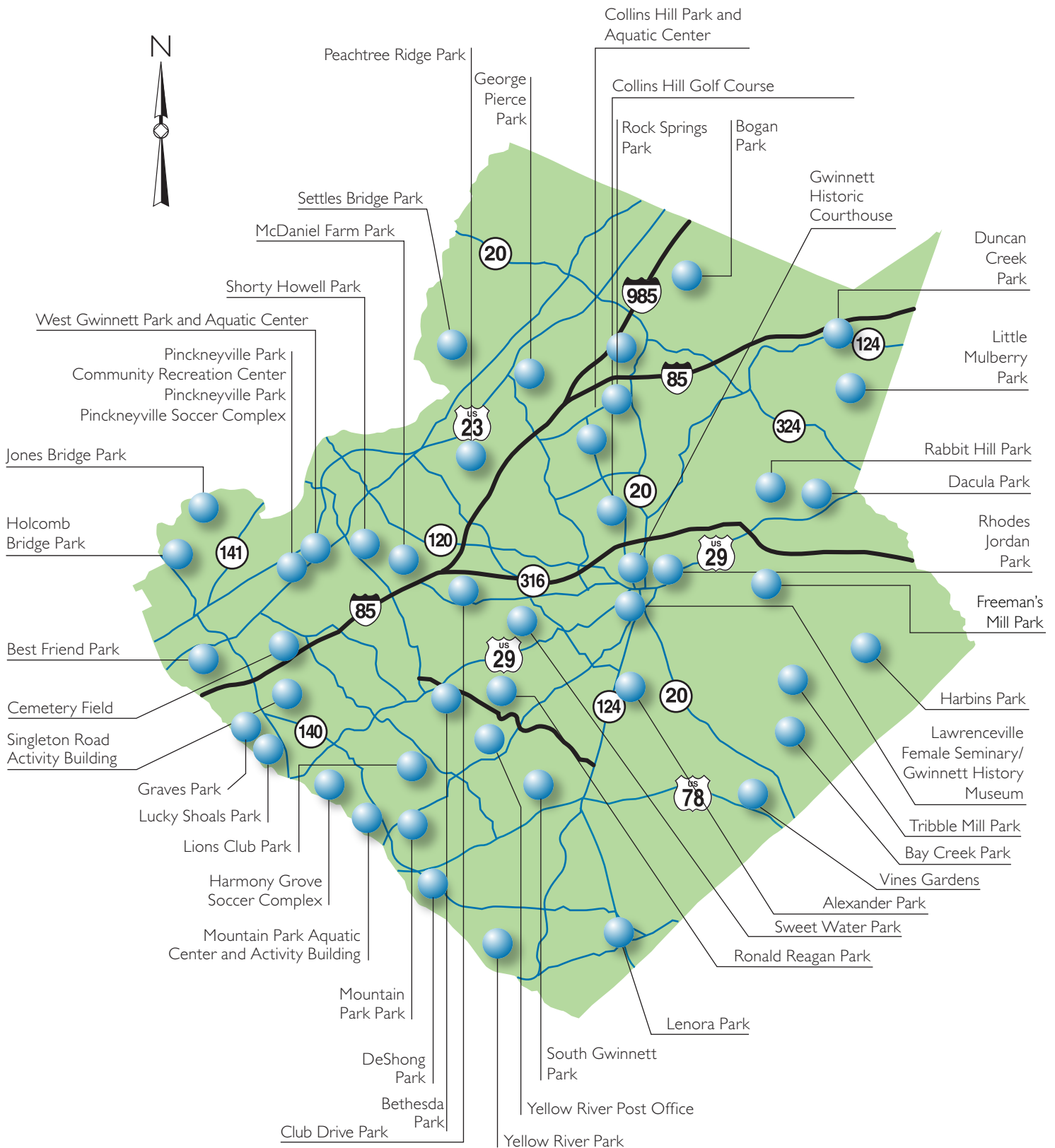
2011 Award Highlights

- Georgia Recreation and Park Association
 - Stacy Fowler, State Athletic Programmer
 - HOOKED Teen Club, Minority Innovative Program Award
 - TILT–Teens in Leadership Training, Innovative Program Award
 - Dacula and Mountain View Pageant Girls, Program Section Volunteer Award
 - Jeff Jansma, Therapeutic Section Volunteer Award
 - Gwinnett Veterans Council War Memorial Museum, Facilities and Grounds Volunteer Award
 - Older American Month, Senior Section Award
 - Ms. Lois Allen, State Volunteer Award
- Georgia Recreation and Park Association – District 7
 - Agency of the Year
 - Gwinnett Senior Softball League, Volunteer Award
- Georgia Trust for Historic Preservation
 - Freeman’s Mill Park, Excellence in Restoration
- Gwinnett Clean and Beautiful
 - Dacula Soccer Club, Best Recycler in Gwinnett Award
- Gwinnett Magazine
 - Best Place for a Wedding – Gwinnett Historic Courthouse



2011 Park Inventory

With 44 parks, residents are just minutes away from enjoying a day at the park and the many activities offered by Gwinnett County Parks and Recreation.





Please consider the environment before printing this report.