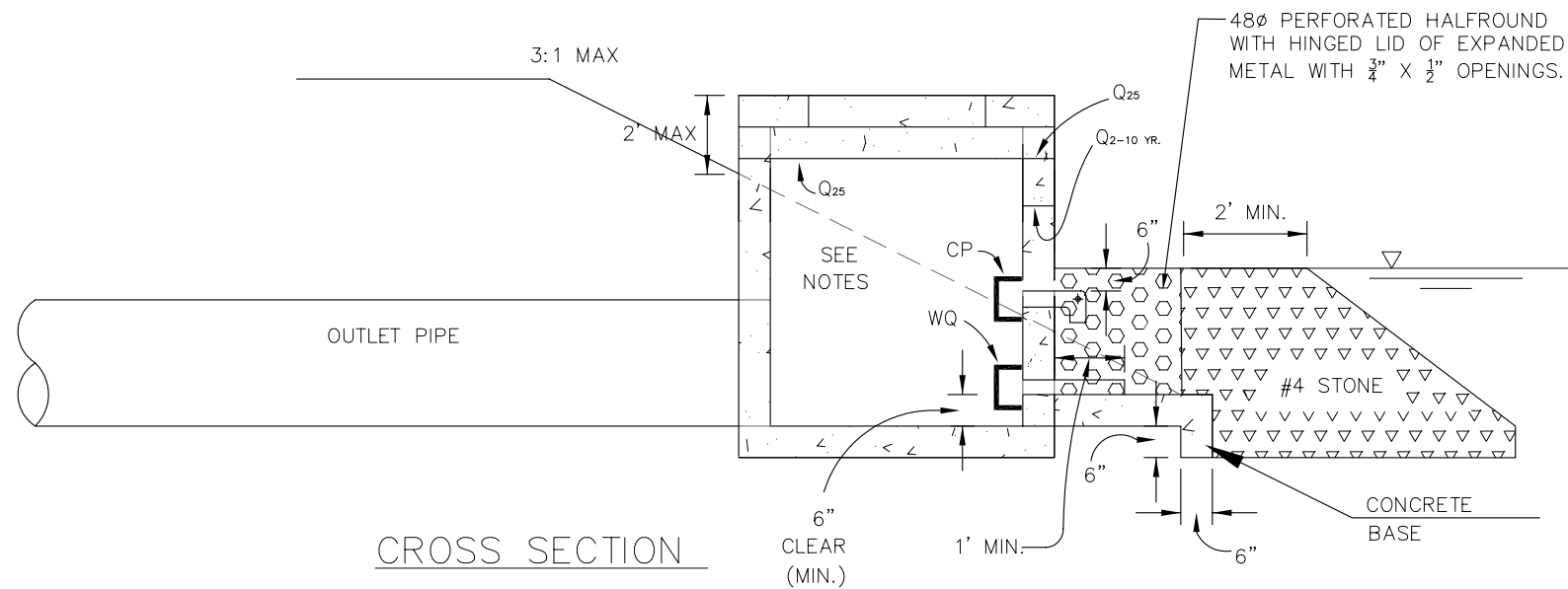
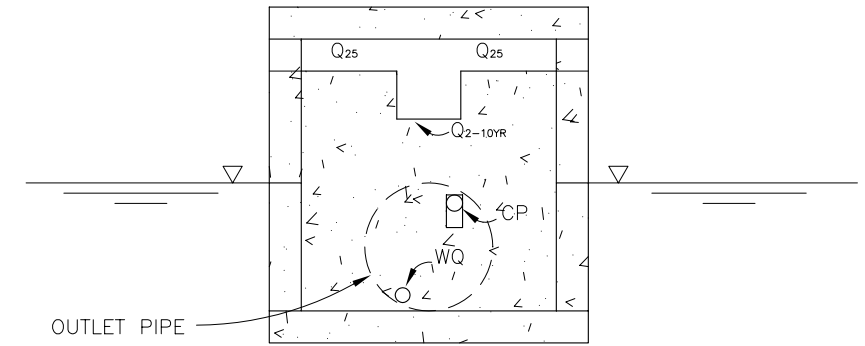


PLAN VIEW



CROSS SECTION



FRONT VIEW



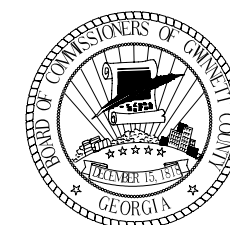
NOTES:

- 1.) WEIR CONFIGURATION SHOWN FOR CONCEPTUAL PURPOSES ONLY
- 2.) REFER TO GC STD. DRAWING 629 FOR CHANNEL PROTECTION (CP) AND WATER QUALITY (WQ) ORIFICE END-CAPS.
- 3.) REFER TO GC STD. DRAWING 611 FOR MANHOLE LID.
- 4.) STONE FILTER SHALL BE #4 STONE. GABIONS MAY BE USED AS AN ALTERNATIVE.
- 5.) FOR DAM HEIGHT > 5' REFER TO STD. DWG 621.
- 6.) FOR ROUND STRUCTURES PROVIDE 48" $\frac{3}{4}$ " ROUND PERFORATED WITH $\frac{1}{2}$ " DIA. HOLE. HINGED LID TO BE OF EXPANDED METAL WITH $\frac{3}{4}$ " X $\frac{1}{2}$ " OPENINGS
- 7.) ORIFICE & CORRESPONDING PIPE SIZES:

ORIFICE SIZE	PIPE SIZE
<3"	6"
3" TO <5"	8"
5" TO <11"	12"

TOP OF DAM = _____ FT
 EMER. SPILLWAY = _____ FT

EVENT	ORIFICE/WEIR INV ELEV.	ORIFICE DIA. (IN)	WEIR LEN. (FT)	VOL. (CF)	WSEL
WQ					
CP					
2					
5					
10					
25					
100					



GWINNETT COUNTY
 DEPARTMENT OF PLANNING & DEVELOPMENT
 STANDARD DRAWING
 OUTLET CONTROL STRUCTURE
 WITH 1/2 ROUND AND STONE FILTER
 DAM HEIGHT = 5' MAX
 DATE: NOVEMBER 2002 SHEET: 612