

Destination2040

Gwinnett's Comprehensive Transportation Plan

gwinnettcounty

STAKEHOLDER
VISIONING MEETING

November 12, 2015



Transportation

Destination2040

Gwinnett's Comprehensive Transportation Plan

gwinnettcounty DEPARTMENT OF
TRANSPORTATION

MISSION

The mission of the Gwinnett County Department of Transportation is to enhance quality of life by facilitating the *mobility* of people and goods *safely* and *efficiently*.

VALUES

Stewardship: We take our duties of *safety* and *fiscal management* to be two of our prime responsibilities.

Responsibilities

- Maintain approximately 2,450 centerline miles of roadway
- Maintain more than 180 bridges and bridge culverts
- Maintain more than 20,000 traffic control signs
- Maintain more than 2,000 miles of sidewalk
- Maintain 705 traffic signals
- Maintain over 225 miles of fiber optic cable
- Maintain over 225 Closed Circuit Television cameras
- Maintain over 200 traffic control flasher/beacon locations
- 1,718,098 Total Transit System Boardings (2014)
- 75,197 Airport Operations (takeoffs/landings 2014)
- Manage 2009/2014 SPLOST Programs totaling over \$650M for the life of the two programs

Areas/Divisions

- Operations, Maintenance, and Planning
 - Operations and Maintenance
 - Traffic Engineering and Planning



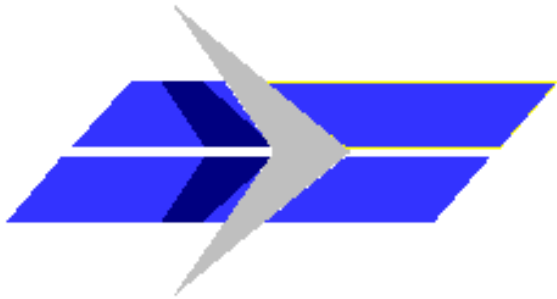
Areas/Divisions

- Operations, Maintenance, and Planning
 - Operations and Maintenance
 - Traffic Engineering and Planning



Areas/Divisions

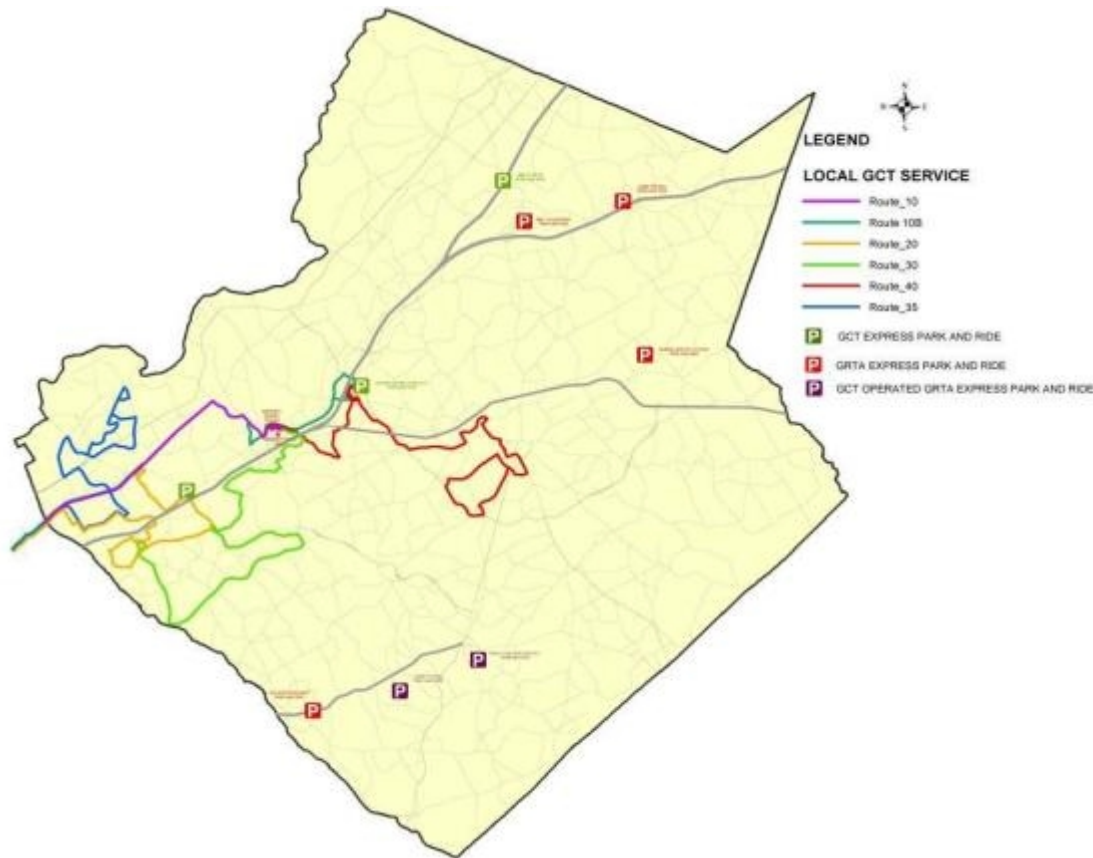
- Aviation & Transit



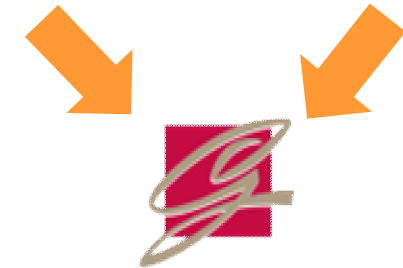
Areas/Divisions



- Aviation & Transit



Federal & State Grants Fare Box Revenue



GWINNETT COUNTY TRANSIT



Areas/Divisions

- Program Delivery
 - Preconstruction
 - Construction



Standard PCI Rating Scale

100	GOOD	Dark Green
85	SATISFACTORY	Light Green
70	FAIR	Yellow
55	POOR	Light Red
40	VERY POOR	Medium Red
25	SERIOUS	Dark Red
10	FAILED	Dark Grey
0		



Areas/Divisions

- Program Delivery
 - Preconstruction
 - Construction

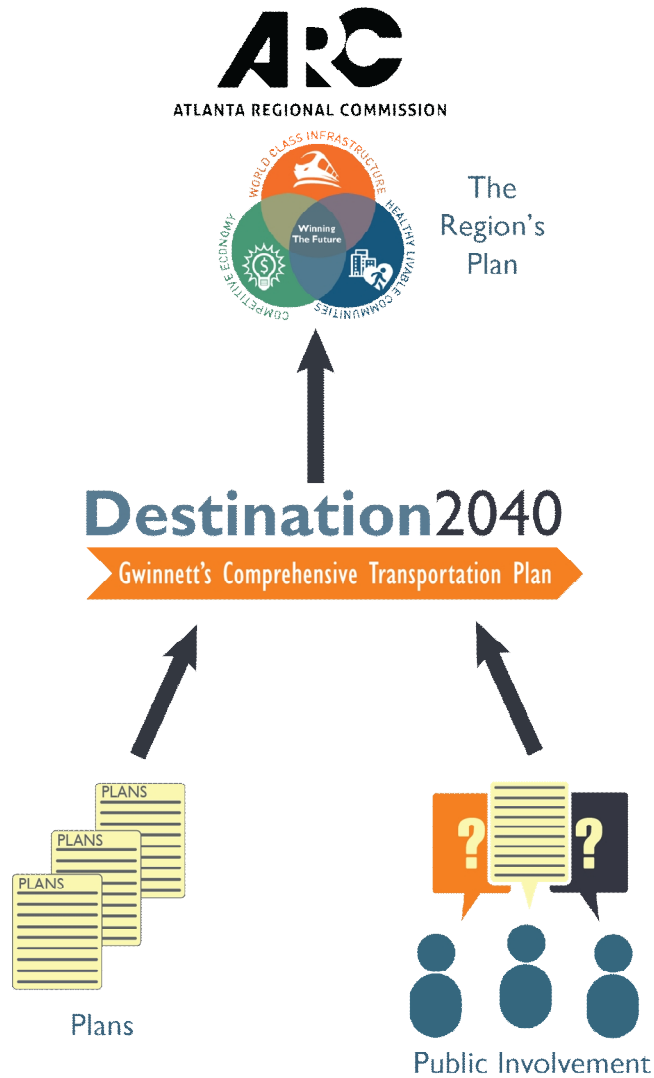


Destination2040

Gwinnett's Comprehensive Transportation Plan



What is a CTP?



Previous CTPs:

2008

2001


Transportation Modes



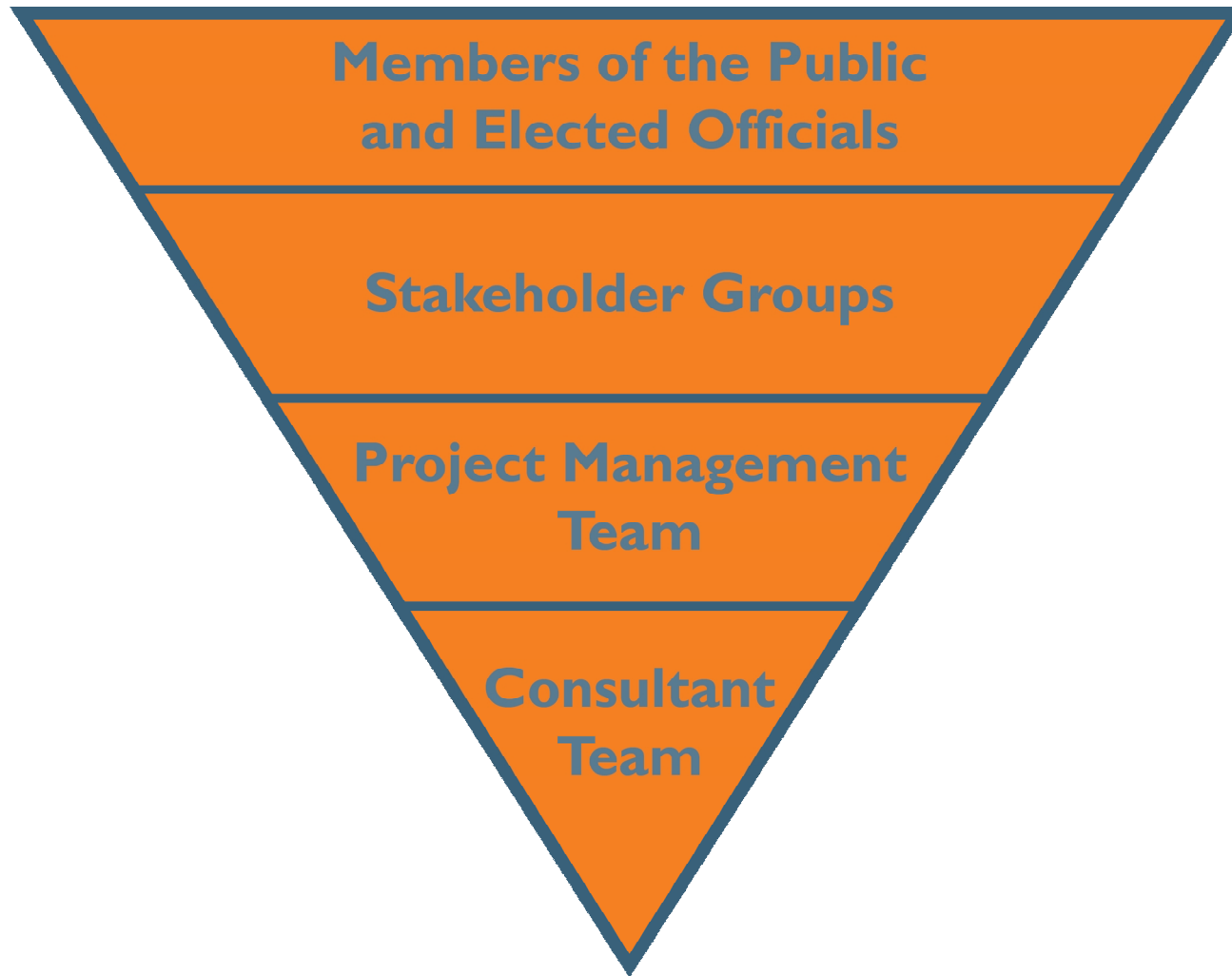
...and Other Considerations



Why it's Important

- Understanding of Community Vision
 - Improvement to Quality of Life
 - Access to State and Federal Funds
 - Responsible Use of Taxpayer Dollars
-
- 

Who is Involved?



Engaging the Public

- Public Meetings
 - Visioning/Needs Assessment
 - Recommendations
- Community Events/Tables
- Stakeholder Interviews
- Adjacent Communities Meetings
- Statistically Valid Public Opinion Survey
- MetroQuest online survey
- Website, email, online tools



Stakeholder Groups

Technical

Atlanta Regional Commission
Georgia Regional Transportation Authority
Georgia Department of Transportation
Gwinnett County Departments
Gwinnett Police and Fire
Gwinnett County Schools

Partner Agency

Cities
Community Improvement Districts
Gwinnett Municipal Association

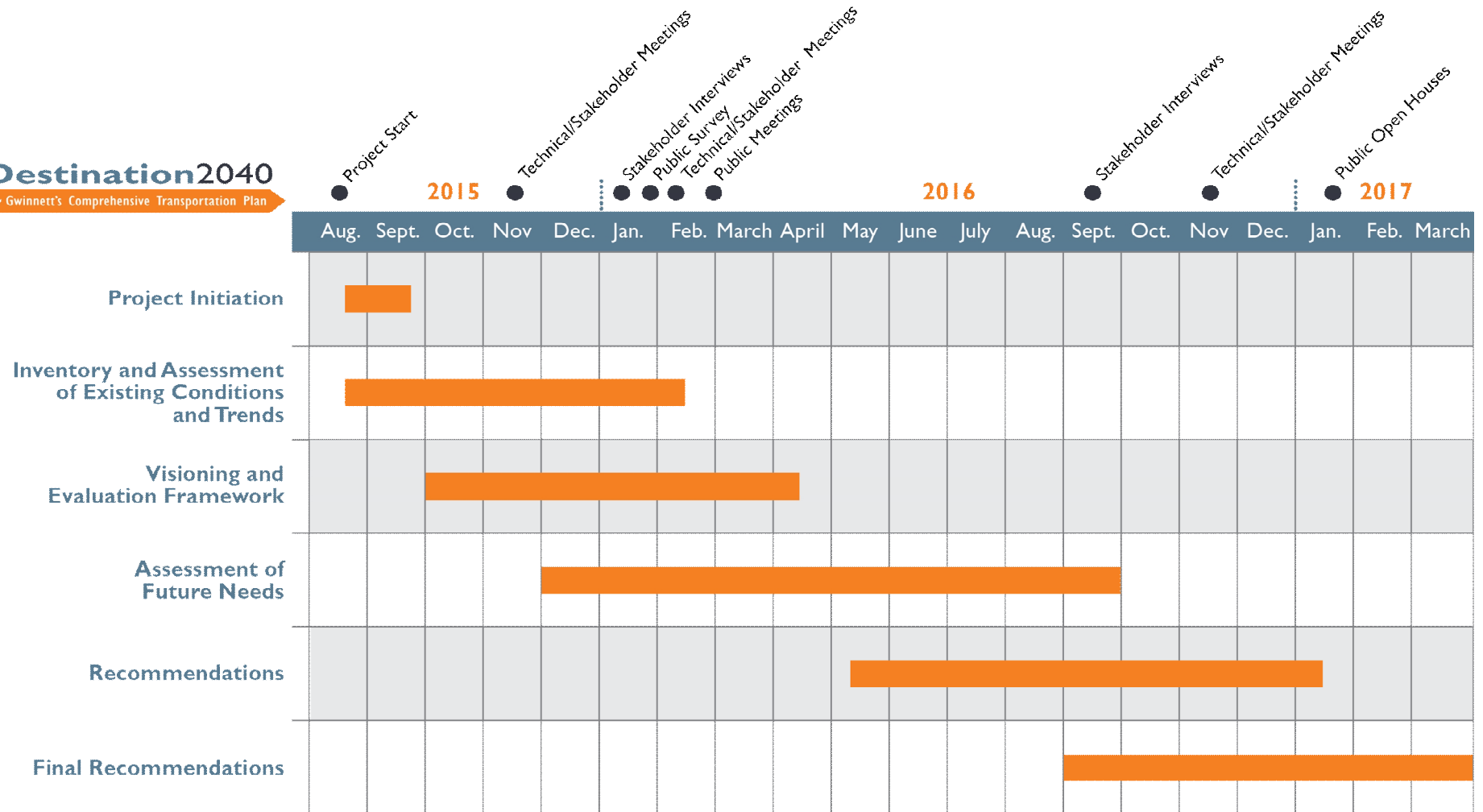
Community

Commissioner Representatives
Gwinnett Chamber of Commerce
Colleges and Universities
Medical Institutions
Bicycle and Pedestrian Advocacy Groups
Aging Services Groups
Youth and Millennial Representatives
SPLOST Committee Representatives
Racial and Ethnic Minority Advocacy Groups
Freight Organizations
Environmental Advocacy Groups
Community Service Organizations

Stakeholder Responsibilities

- Vision and Goals
- Technical or Stakeholder Meetings (3-4 total)
- Help identify and advertise public involvement opportunities
- Attend public meetings
- Review documents and recommendations

Tentative Project Schedule



Around the Room...

- Vision and Goal Boards
- Demographics and Commute Boards
- Transportation and Land Use Boards

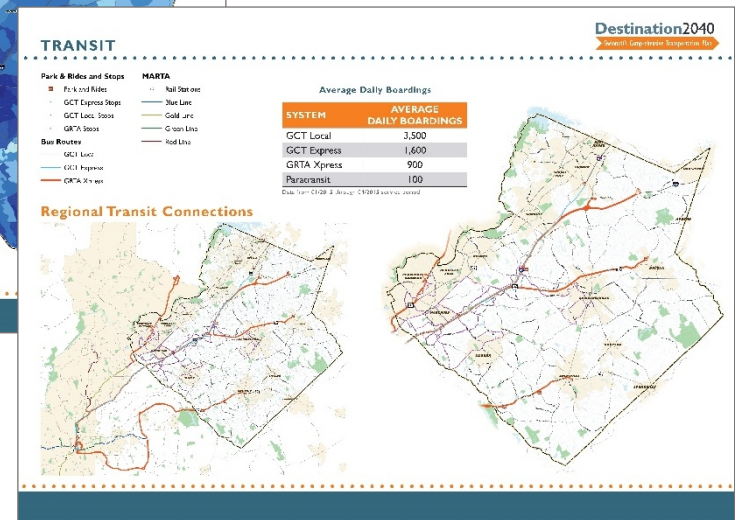
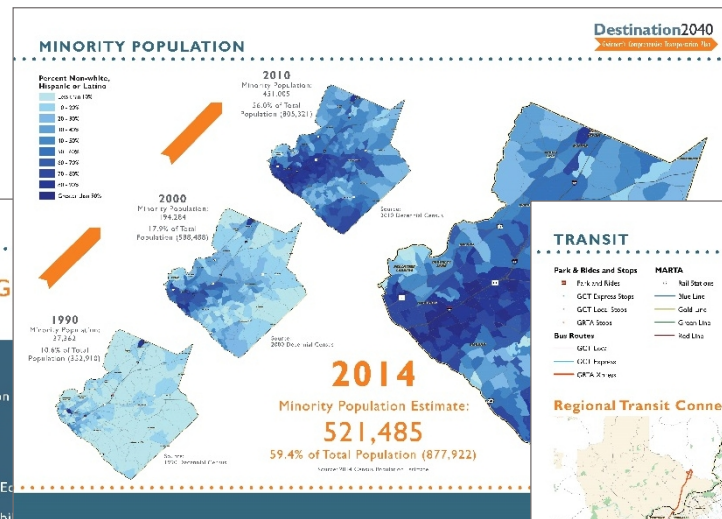
GOALS FROM THE STATE AND FEDERAL LEVELS

Gwinnett
STATEWIDE STRATEGIC TRANSPORTATION PLAN GOALS

- Supporting Georgia's economic growth and competitiveness
- Ensuring safety and security
- Maximizing the value of Georgia's assets, getting the most out of the existing network
- Minimizing impact on the environment

MAP-21

- Safety
- Infrastructure Condition
- Congestion Reduction
- System Reliability
- Freight Movement and Efficiency
- Environmental Sustainability
- Reduced Project Delivery Delays



Visioning Exercise

- Explore most important goals for the transportation plan
- Write your thoughts and ideas down!
 - Flip chart paper – group ideas
 - Note cards – personal thoughts to take with you
 - Post-it notes – personal ideas to leave at the table



Visioning Exercise

- 3 questions, 3 rotations
- Table host responsibilities:
 - Remain at the table
 - Summarize previous conversations
 - Facilitate discussion
- Others rotate to new tables with new people



Question #1

QUESTION 1

Think about Gwinnett County
in 5 years and 25 years...

What is your vision for the County (not
necessarily related to transportation)?

What words/phrases best summarize your vision?

Question #2

QUESTION 2

What aspects of transportation will support those descriptors?

Not necessarily changes, just what aspects of transportation should be present?

Consider long term aspects as well as short term ones.

Question #3

QUESTION 3

What obstacles relative to transportation did we overcome in order to arrive at this place?

Summarize Table Results

- Top Five Goals by Table
- Brief Summary
- Dots Exercise
 - Orange dots for short term needs
 - Blue dots for long term needs

Next Steps

- Vision and Goals
 - Project Management Team to develop draft Vision and Goals
 - Draft Vision and Goals presented at Public meetings for comment
 - Goals guide Evaluation Metrics
- Technical
 - Data Collection, GIS and Field Inventory
 - Draft/Final Technical Memorandum
- Public Meetings and Community Events

NEXT STEPS...