

Insect Pollinator Identification Guide



Bumble Bee

- 10 – 19 mm
- Black and yellow
 - Small hairy head
 - Large hairy body
 - Loud buzzing



Fly

- 6 – 13 mm
- Black or gray
 - Two wings
 - Large eyes
 - Small antenna



Carpenter Bee

- 16 – 22 mm
- Black and yellow
 - Large hairy head and upper body
 - Black dot on upper body
 - Hairless shiny lower body
 - Fast erratic flying



Butterfly

- Gulf Fritillary: bright orange with black
- Monarch: orange/red with black wings
- Swallowtail: bright colors with forked tail wings



Honey Bee

- 12 – 15 mm
- Light brown with brown or black stripes
 - Slender oval body



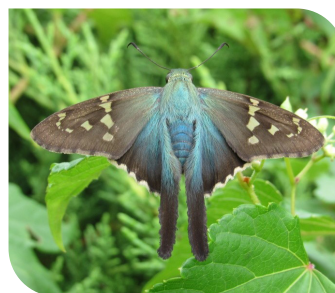
Moth

- Sphinx moth: Muted brown wings, long pointed abdomen, flies fast like a hummingbird
- Scape moth: black wings and body with bright orange collar



Small Bee

- 5 – 15 mm
- Leafcutter Bee: black with light yellow stripes
 - Sweat Bee: metallic



Skipper

- A family inbetween a butterfly and a moth
- Brown/gray and fuzzy body
- Fly in a quick darting manner



Wasp

- 13 – 25 mm
- Hairless cylindrical body with thin waist
 - Paper Wasp: brown with yellow
 - Potter Wasp: black with yellow stripes
 - Yellow Jacket Wasp: black and yellow



Other

- Beetle: oval body
- Dragonfly: long slender body with long shimmering wings and large eyes
- Lacewing: green delicate body with veined wings