

# GWINNETT COUNTY TRAILS MASTER PLAN

## CORE TRAIL NETWORK

The Core Trail Network is composed of trail segments identified as part of the larger Countywide system anticipated for initial plan implementation. Although full implementation of the Core Trail Network may take multiple decades if considering current and likely funding sources, additional financial support may mean earlier implementation.

## PRIORITY TRAILS

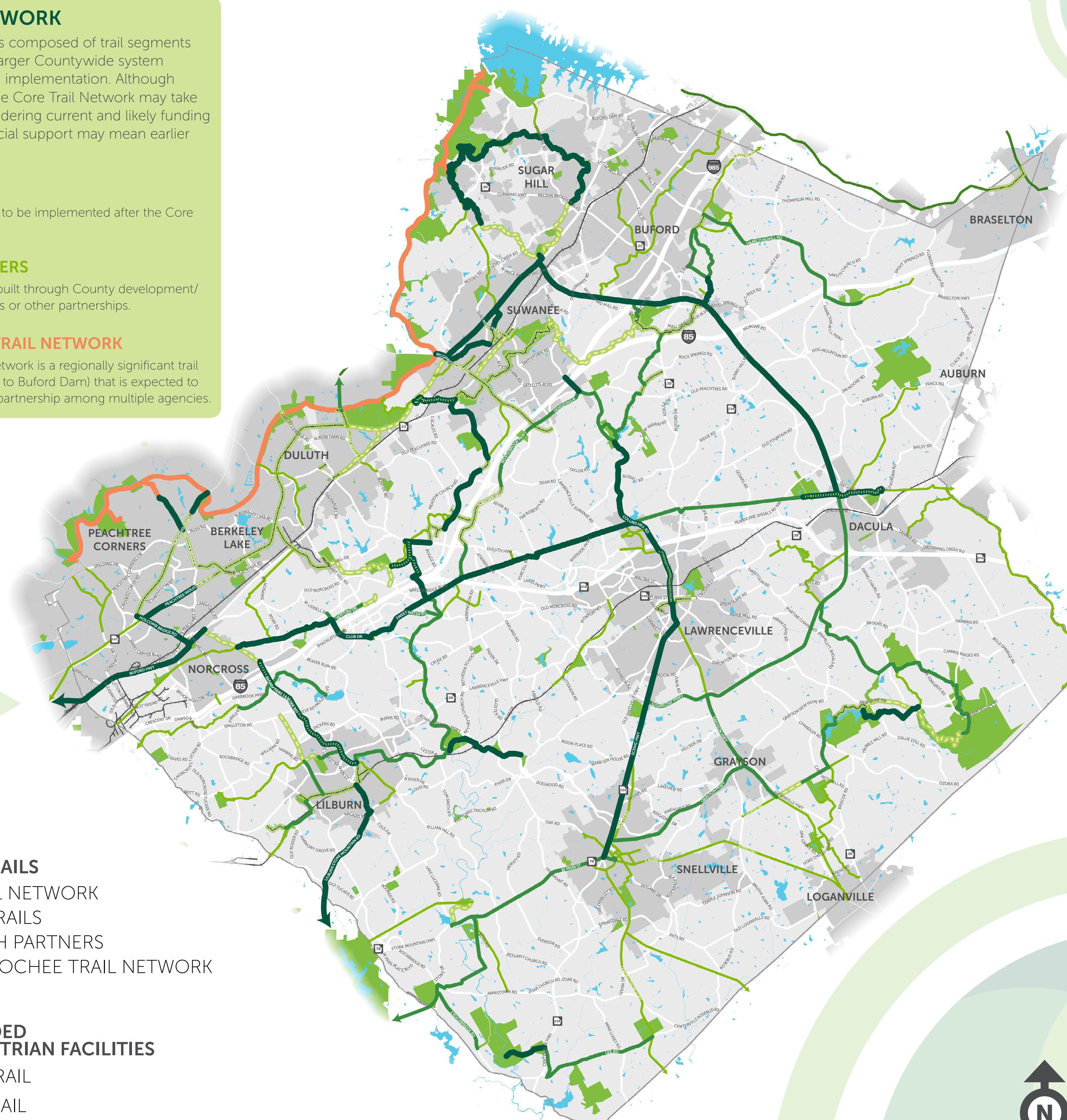
Priority Trails are anticipated to be implemented after the Core Trail Network is realized.

## TRAILS WITH PARTNERS

Trails with Partners may be built through County development/redevelopment requirements or other partnerships.

## CHATTAHOOCHEE TRAIL NETWORK

The Chattahoochee Trail Network is a regionally significant trail (from Coweta County north to Buford Dam) that is expected to be implemented through a partnership among multiple agencies.



## COUNTYWIDE TRAILS

- CORE TRAIL NETWORK
- PRIORITY TRAILS
- TRAILS WITH PARTNERS
- CHATTAHOOCHEE TRAIL NETWORK

## EXISTING & FUNDED BICYCLE & PEDESTRIAN FACILITIES

- EXISTING TRAIL
- FUNDED TRAIL
- PARTIALLY FUNDED TRAIL