

# GWINNETT COUNTY HEALTH DEPARTMENT



Audrey Arona, MD  
*CEO and Health Director*



2570 Riverside Parkway | Lawrenceville, GA 30046 | [www.gnrhealth.com](http://www.gnrhealth.com)

# GWINNETT COUNTY BOARD OF HEALTH



**Board Chair, Louise Radloff**

**Board Vice-Chair, Mike Mason**  
Mayor, Peachtree Corners

**County Commission Chair, Charlotte J. Nash**

**Superintendent, GCPS, Alvin Wilbanks**

**Public Health Consumer, Alan Bier, MD**

**Emergency Room Physician, James Smith, MD**

**Consumer Representative, Joy Monroe**



# OUR VISION

*A healthy, protected, and prepared community.*

# OUR MISSION

*To protect and improve the health of our community by monitoring and preventing disease; promoting health and well-being; and preparing for disasters.*



# RECOGNITION



## **IMPACT Business Award - Healthcare** *Gwinnett Chamber of Commerce*

This honor is given to an organization that has demonstrated dedication, leadership and support to the industry.



## **FDA Voluntary National Retail Food Regulatory Program**

Out of 831 jurisdictions, GNR Health Departments is now **one of only five** jurisdictions in the nation to meet all nine standards.



## **Promising Practice Award** *National Association of County and City Health Officials (NACCHO)* Awarded for the collaboration of epidemiology and environmental health in food-borne outbreak investigations.



# GWINNETT LOCATIONS



## District Office

2570 Riverside Parkway  
Lawrenceville, GA 30046  
770-339-4260

### Hours of Operation

M – F: 8:00 a.m. – 5:00 p.m.



## Adolescent Health Program

Meadowcreek High School  
4455 Steve Reynolds Blvd  
Norcross, GA 30093  
**Hours of Operation**  
Follows school schedule & hours



## Buford Health Center

2755 Sawnee Ave  
Buford, GA 30518  
770-614-2401

### Hours of Operation

M, W, Th: 8:00 a.m. – 5:00 p.m.  
Tu: 8:00 a.m. – 5:00 p.m.  
F: 8:00 a.m. – 3:00 p.m.



## Norcross Health Center

5030 Georgia Belle Court  
Norcross, GA 30093  
770-638-5700

### Hours of Operation

M, T, W: 8:00 a.m. – 5:00 p.m.  
Th: 8:00 a.m. – 7:00 p.m.  
F: 8:00 a.m. – 3:00 p.m.



## Lawrenceville Health Center

455 Grayson Hwy., #300  
Lawrenceville, GA 30046  
770-339-4283

### Hours of Operation

M, W, & Th: 8:00 a.m. – 5:00 p.m.  
Tu: 8:00 a.m. – 7:00 p.m.  
F: 8:00 a.m. – 3:00 p.m.



## Preventive Health Center (TB)

455 Grayson Hwy., #300  
Lawrenceville, GA 30046  
770-339-4283

### Hours of Operation

M – F: 8:00 a.m. – 5:00 p.m.

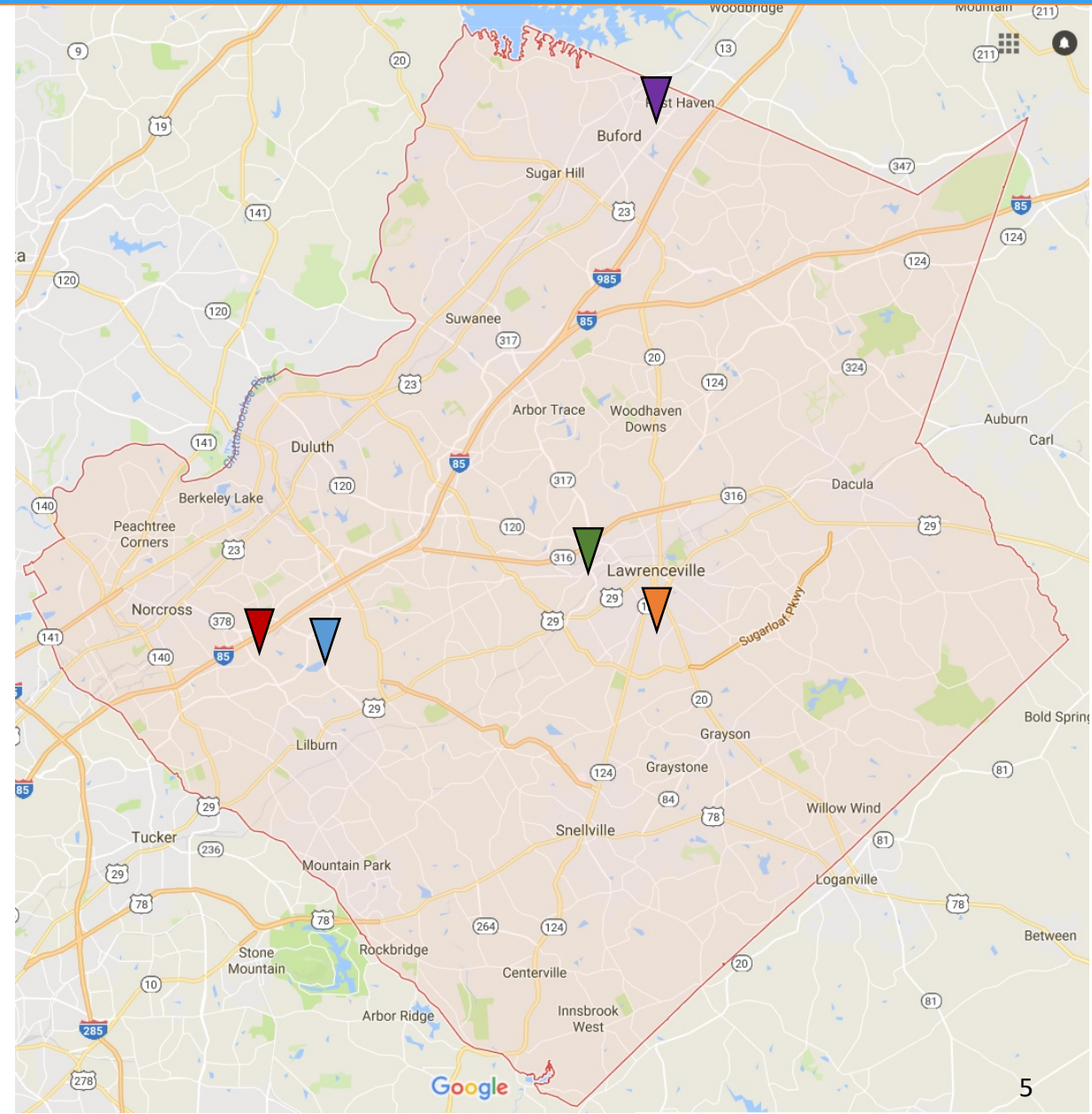


## Gwinnett Environmental Health

455 Grayson Hwy., #300  
Lawrenceville, GA 30046  
770-339-4283

### Hours of Operation

M – F: 8:00 a.m. – 5:00 p.m.



# SERVICES



## Clinical Services

### Child and Adolescent Health

Child Immunizations  
Women, Infants, and Children (WIC)  
Supplemental Nutrition Program  
Child Dental Care  
Children Health Check Exams  
Children First Developmental Screenings  
Vision, Hearing, & Dental School Screenings  
Teen Services

### Adult and Family Health

Family Planning\*  
DNA testing and lab tests  
Pregnancy and Prenatal Related Services  
Nutrition Counseling  
Cancer Screenings  
Mammogram/Services for Women over 40\*

### Keeping Communities Healthy and Safe

Travel Immunizations  
Adult Immunizations  
STD Testing, Treatment and Follow-up  
PrEP Education and Treatment  
Tuberculosis Testing and Treatment  
Disease Testing and Counseling  
Environmental Health Services\*  
Refugee Health

*\* Services available at select locations*



## District Office Administrative Services Only



# CLINICS & SERVICES



Buford



Lawrenceville



Norcross

Services Provided in Calendar Year 2019 # of Visits for Top Programs	
	TOTAL
Immunizations	138,533
Breast & Cervical Cancer Screenings	3,051
Child Health	11,078
Dental Care	3,731
Family Planning	6,174
STD Testing & Treatment	927
International Travel Clinic	1,171
WIC	27,920



# ENVIRONMENTAL HEALTH

**9,456** *restaurants, hotels, community pools and septic systems were inspected in 2019.*

Of the 9,456 inspections, **6,560** restaurant inspections were conducted to ensure safe food handling this calendar year.

**185** were conducted on weekends.

**275** were conducted after 5:00 PM.

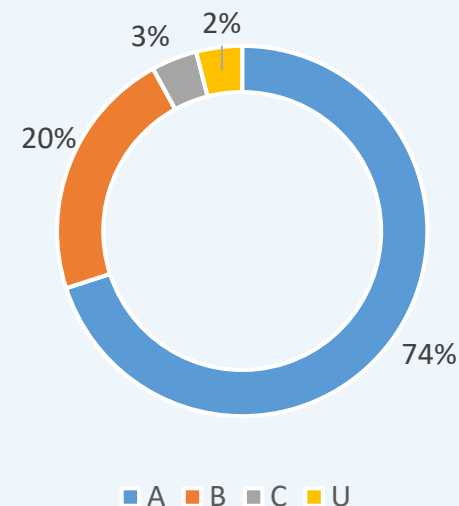
**1 of 5** US jurisdictions to meet all 9 FDA Food Safety Standards.

## More than restaurants:

Hoarding house inspections  
Public pool inspections

Septic tank inspections  
Body art studio inspections

Restaurant Inspection Scores  
Gwinnett County, FY2019





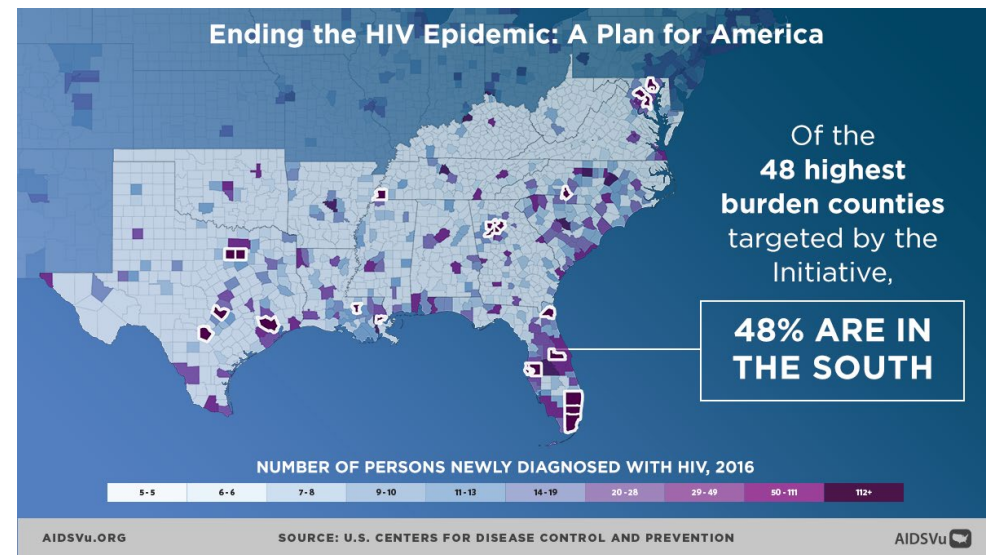
# EPIDEMIOLOGY: BASICS

**Investigated & conducted surveillance on over 9,200 notifiable disease and illness events in Gwinnett County during calendar year 2019.**

- Investigation and control for over 70 Notifiable Diseases
- Only entity that monitors, investigates, and responds to limit the spread of some diseases including:
  - Rabies
  - Tuberculosis
  - Emerging and novel pathogens such as COVID-19
- Investigate 100% of outbreaks to implement disease control efforts and protect the health of our community
  - On site assessment and education provided same day to outbreak congregate living facilities (i.e. nursing homes) and vulnerable populations (i.e. schools and daycares)
    - Area of concern for COVID response – inability to be on the ground with all outbreaks

# EPIDEMIOLOGY: 2019 HIGHLIGHTS

- A total of **35** outbreaks of illness were investigated
- Ongoing nationwide outbreak of Hepatitis A
  - **28** cases were reported in Gwinnett County in 2019 (normally 2 or 3 cases are seen per year)
  - **1,024** Hepatitis A immunizations provided to high risk populations at **13** off-site clinics
- Gwinnett's rate of Tuberculosis (**4.5** per 100,000) far exceeds that of GA (2.8) and the US (2.7)
  - One investigation in 2019 resulted in over 3,000 individuals being tested in a Gwinnett High School
- Collaborative End the AIDS Epidemic efforts are still underway with Cobb, Fulton and Dekalb counties
  - Gwinnett's rate of new infections (**14** per 100,000) is down from 20 in 2018, but we have a long way to go!





# PREPARED FOR A RESPONSE: COVID-19

- Responsible for COVID-19 response
- Provide guidance and information updates to clinical and community partners
  - Emerging Pathogen Updates
  - Weekly Community and School Partner calls
- Providing free COVID-19 testing
  - ~4,000 clients tested weekly
  - Over 67,000 tested to date
- Epidemiologic investigation of cases including contact tracing
- Investigate 100% of outbreaks
  - Priority placed on congregate facilities and vulnerable populations including schools



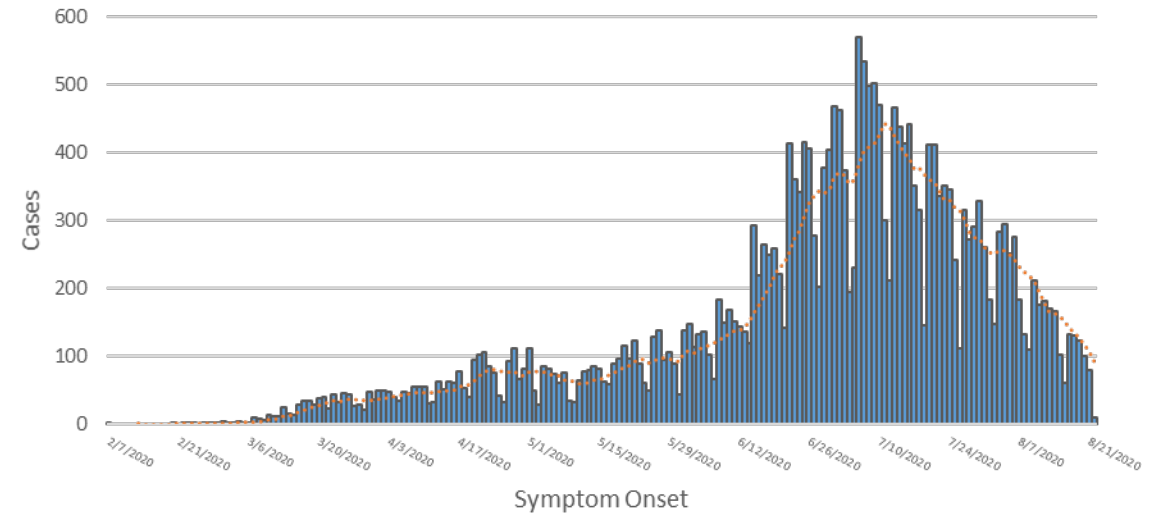
*Top right: Visit from US Surgeon General. Top left and bottom: Large testing site at Infinite Energy Center. Over 1200 individuals tested in one day.*

# PREPARED FOR A RESPONSE

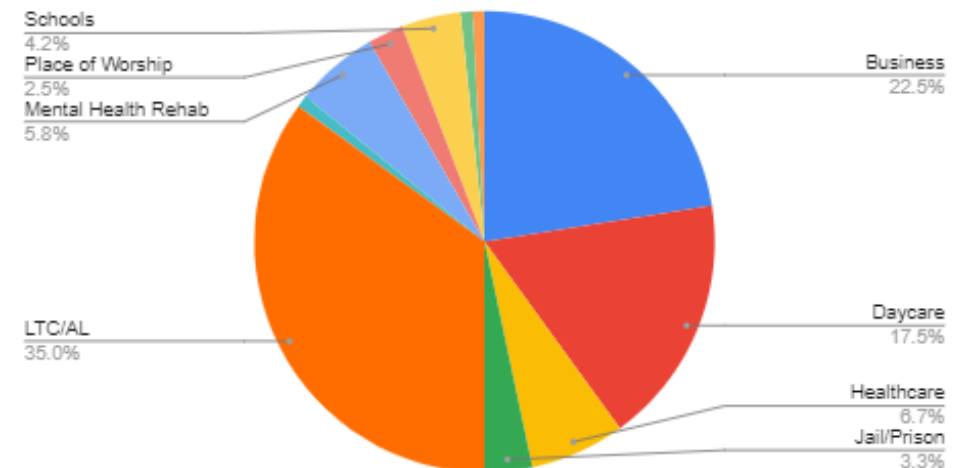
# COVID Response

- 2019 COVID Pandemic has had a significant impact in Gwinnett County
- Surveillance Updates as of 8/24/2020
  - 23,328 confirmed cases
    - 9.5% hospitalized
    - 1.2% infections resulted in death
- 117 Outbreaks of COVID-19
  - Outbreak cases account for 4% of all Gwinnett cases
  - Outbreak deaths account for 42% of all Gwinnett deaths
- Weekly data summary available on website at [www.GNRHealth.com](http://www.GNRHealth.com)

**Confirmed COVID-19 Cases, Gwinnett County, as of 8/24/2020**



COVID-19 Outbreaks in Gwinnett County by Facility Type, as of 8/24/2020





# PARTNERING FOR PREPAREDNESS

- Preparedness and response extends beyond COVID-19
- Planning efforts ongoing for
  - Bioterrorism response
  - Evacuations sheltering
  - Mass vaccinations
  - Mass treatment/prophylaxis
- Local and regional coalition building



## Hurricane Evacuation Sheltering

- GNR partnered with Viewpoint Health and Medical Reserve Corps volunteers to help staff a shelter for Hurricane Dorian evacuees in Augusta
- Should we need a Gwinnett shelter, GNR has lined up many community partners to collaborate with us to provide the best possible shelter experience

## 2019 Super Bowl Preparations

- GNR partnered with Fulton County for over a year to plan and prepare for Super Bowl LIII.
- Countless hours among dozens of organizations throughout Metro Atlanta went into preparations for this event of national significance.



# SUMMARY OF TOTAL BUDGET REQUEST

	2021 MAL	Program Mod #1	Program Mod #2	Program Mod #3	Total County Request
<b>REVENUES</b>					
County Cash	1,574,641	1,105,220	120,485		2,800,346
County In-Kind	1,399,547				1,399,547
<b><u>TOTAL REVENUES</u></b>	<b>2,974,188</b>	<b>1,105,220</b>	<b>120,485</b>		<b>4,199,893</b>
<b>EXPENDITURES</b>					
Salaries	759,056	688,629	74,482		1,522,167
Fringes	268,294	416,591	46,003		730,888
Rent *	1,301,904				1,301,904
Utilities *					
Janitorial *	97,643				97,643
Supplies	289,412				289,412
Travel/Mileage					
Training					
Other *	257,879				257,879
Capital *					
<b><u>TOTAL EXPENDITURES</u></b>	<b>2,974,188</b>	<b>1,105,220</b>	<b>120,485</b>		<b>4,199,893</b>

# CONTACT US: 770-339-4260

**Audrey Arona, MD**

*CEO/Health Director*  
770-339-4260  
Admin. 678-376-3213

**Shawnda Jones**

*Chief Financial Officer*  
678-442-6888

**Connie Russell, MA, MPH**

*District Program Director*  
678-442-6865  
Admin. 678-442-6916

**June Brown**

*Chief Information Officer*  
678-442-6890

**Natasha Kimsey, RD, LD**

*Clinic Operations Director*  
678-442-6864  
Admin. 678-376-3209

**Joseph Sternberg, MBA, REHS,  
RN, CPH**

*Environmental Health and Injury  
Prevention Director*  
678-376-3217  
Admin. 678-376-3213

**Tara Echols**

*Community Health Director*  
770-339-5372

**Keisha Lewis-Brown, RN, MSN**

*Nursing Director*  
678-442-6878

**Alana Sulka, MPH, RN, CPH**

*Epidemiology and Infectious  
Diseases Director*  
678-442-6918  
Admin. 678-376-3213

**Thomas Gibson**

*Human Resources Director*  
678-442-6890

**Mark Reiswig**

*Emergency Preparedness Director*  
678-442-6861  
Admin. 678-442-6860

**Chad Wasdin**

*Communications Director*  
678-442-6909  
Admin. 678-442-6860

