



SPLOST



your **pennies**
at **work**



SPLOST

Citizen Review Committee

Joint Technical Committee



Update Meeting
May 2015



- Call to Order – Open Meeting
- Welcoming Remarks
- Approval of Agenda
- Approval of Minutes
- SPLOST Overview
- County and City SPLOST Update
- Close Meeting
- Tour of the Sugar Hill City Hall





SPLOST Overview



State Law – SPLOST

O.C.G.A. §48-8-110 to §48-8-124

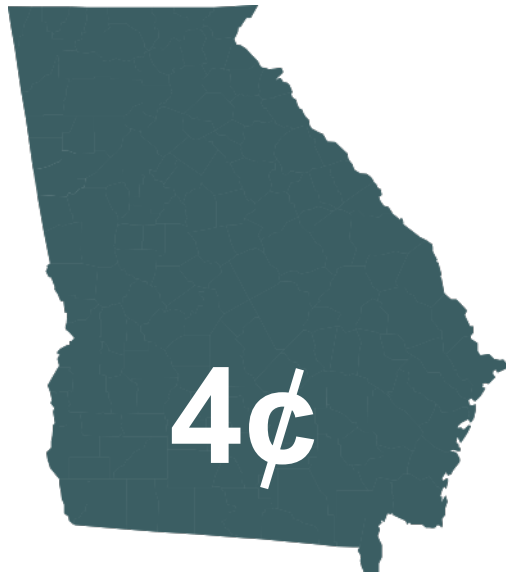
- Capital outlay project
- Intergovernmental agreement
 - Formula for allocation of proceeds between County and Cities
 - Use of proceeds
- Referendum language
- State Department of Revenue's fee
- Reporting
- Enforcement



SPLOST

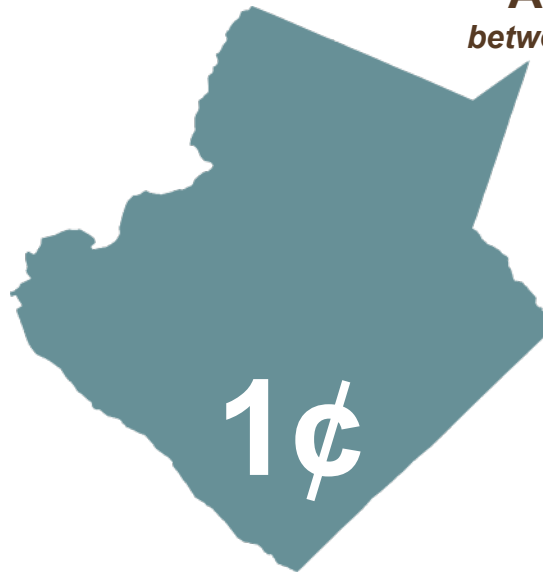
6¢ Sales Tax in Gwinnett County

Fixed



State
of
Georgia

Optional



Gwinnett
County

“Options” –
Require Voter
Approval *(shared
between County and Cities)*

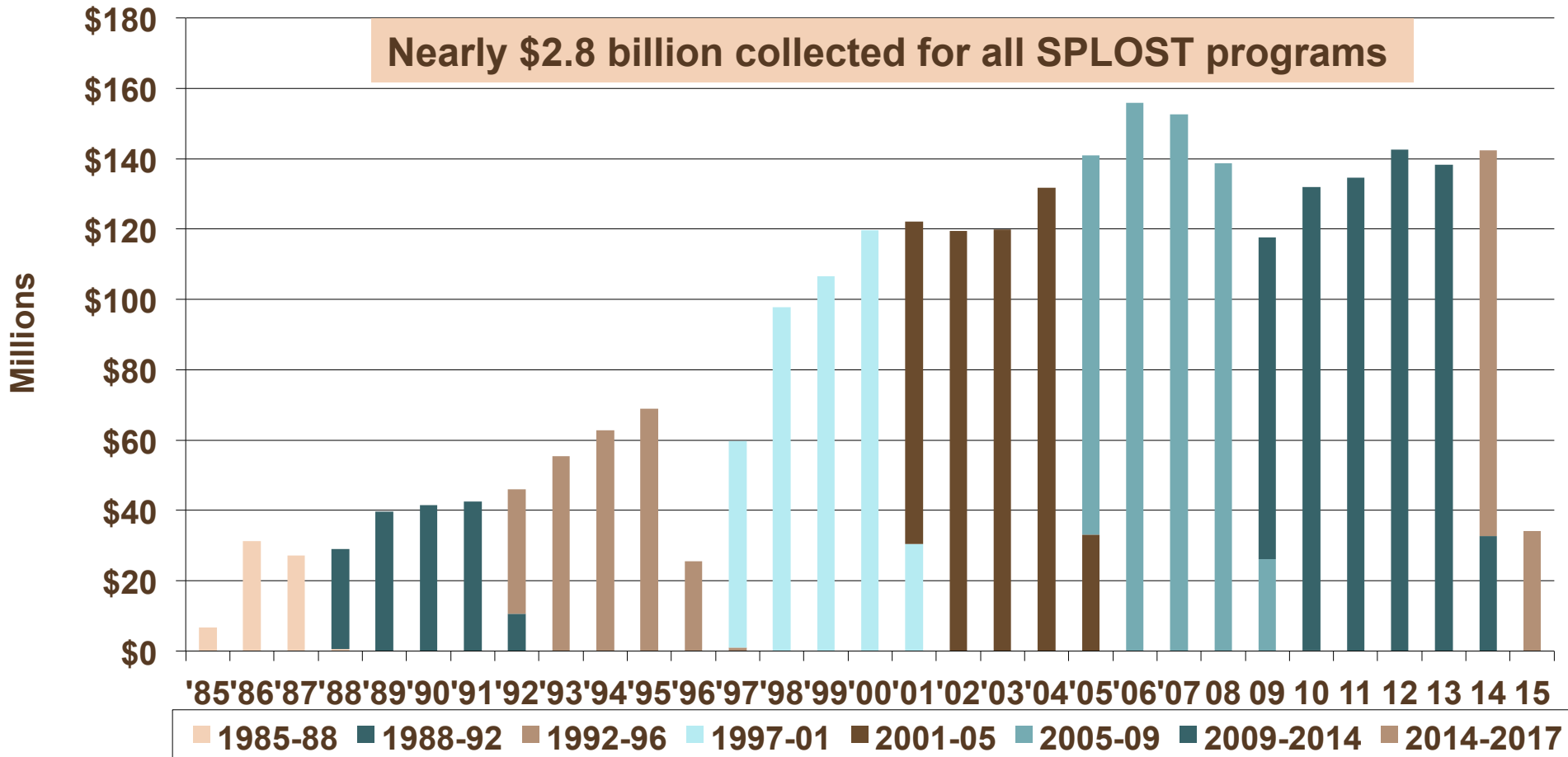
Optional



E-SPLOST

SPLOST

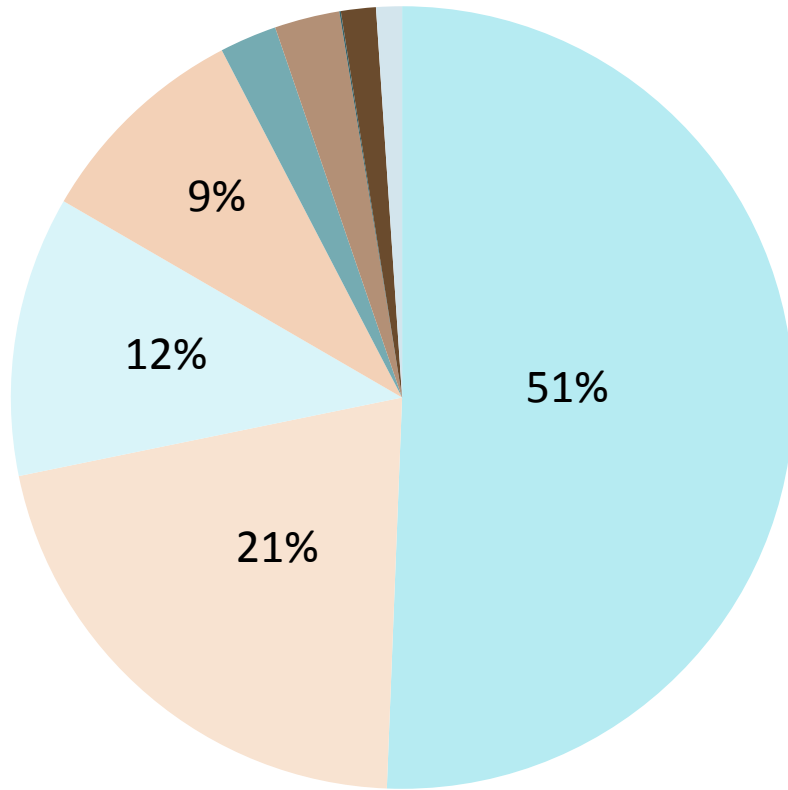
SPLOST Collections



All SPLOST Programs

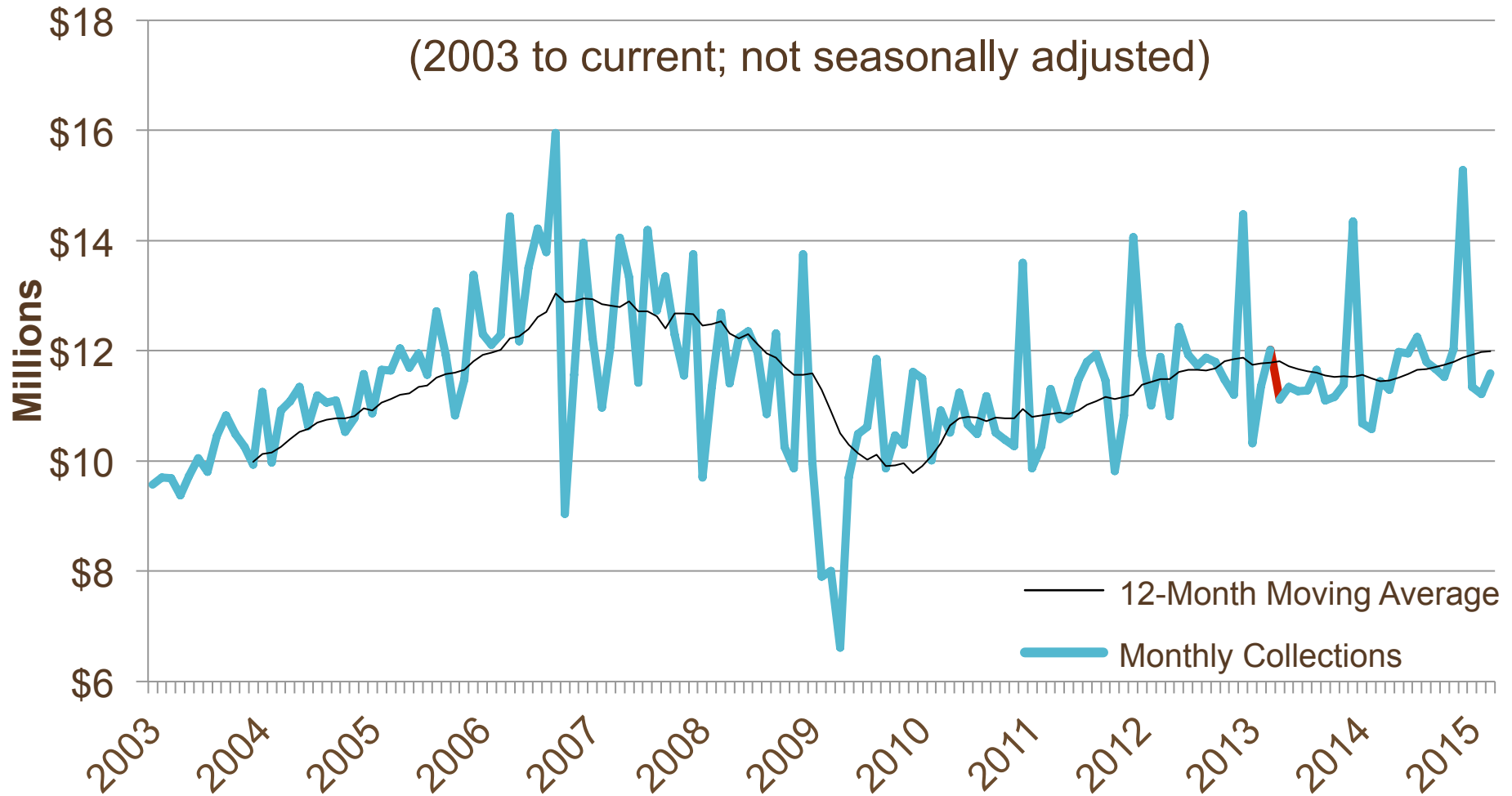
Nearly \$2.8 Billion

Allocation

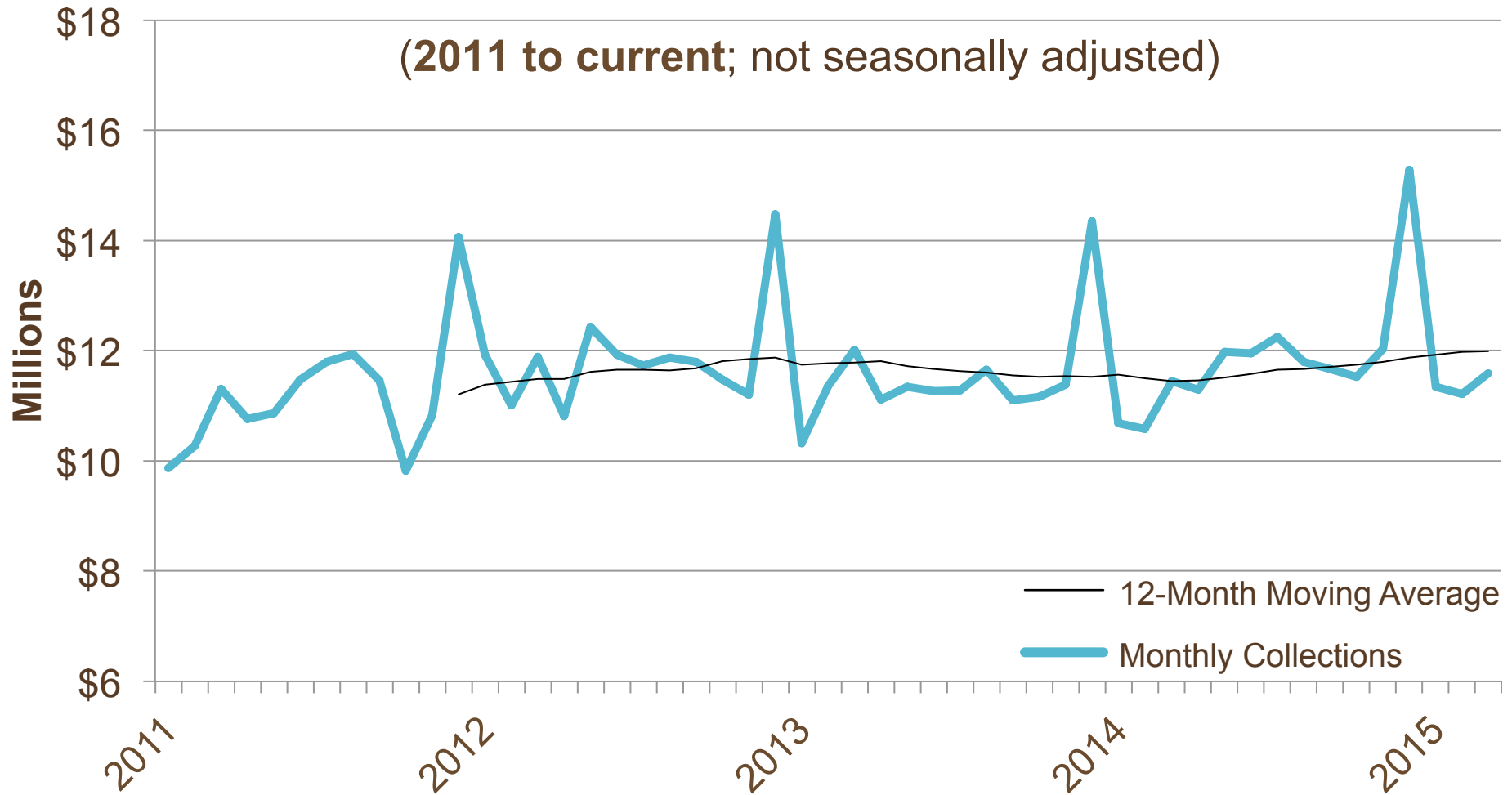


- Roads, Streets, and Bridges
- Recreational Facilities
- Public Safety Facilities and Equipment
- City Projects
- Gwinnett Justice and Administration Center
- Courthouse Facilities
- Senior Services Facilities
- Libraries
- Civic Center

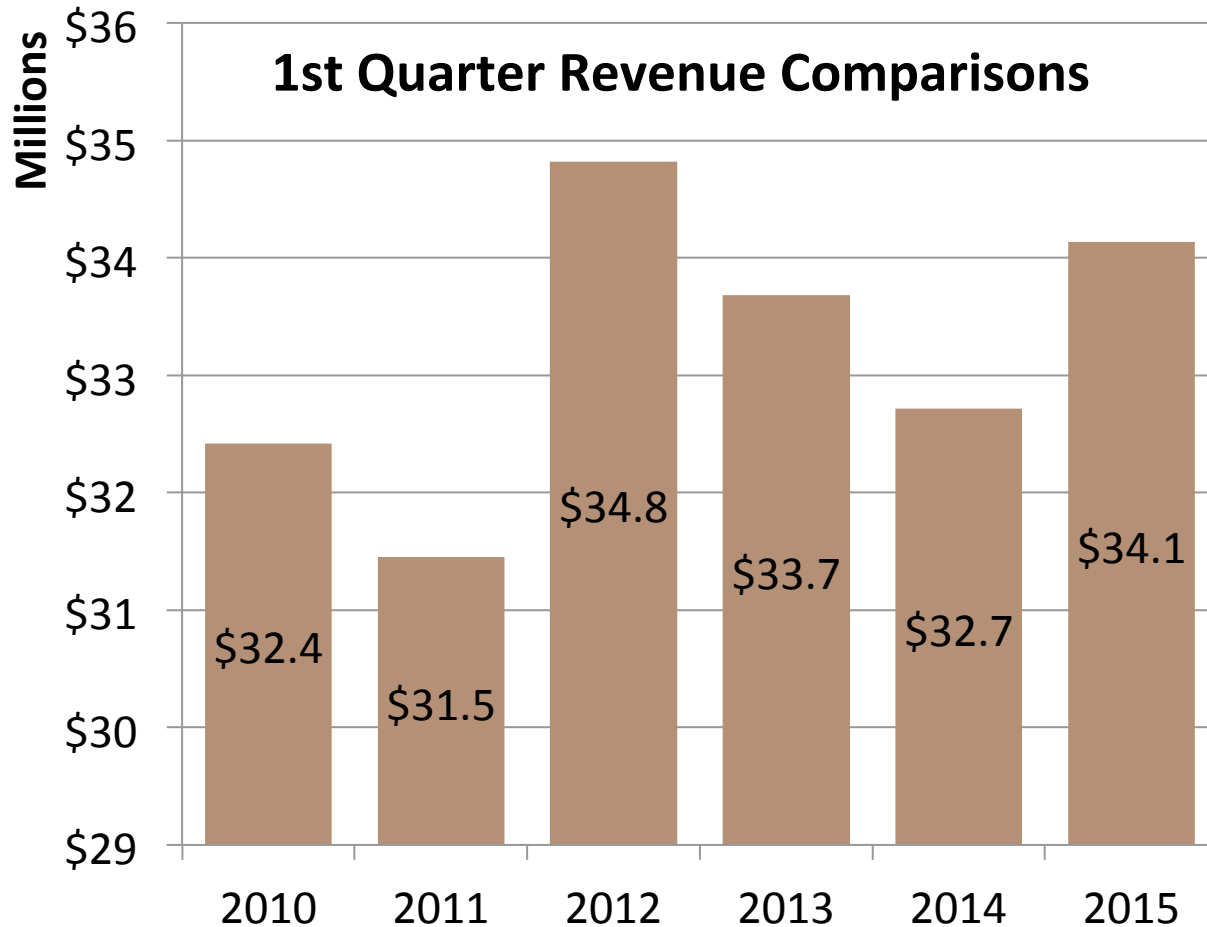
Gwinnett SPLOST Collections



Gwinnett SPLOST Collections



SPLOST Revenues



Forecast

4/1/2014 – 3/31/2015

\$143.695 million

Actuals

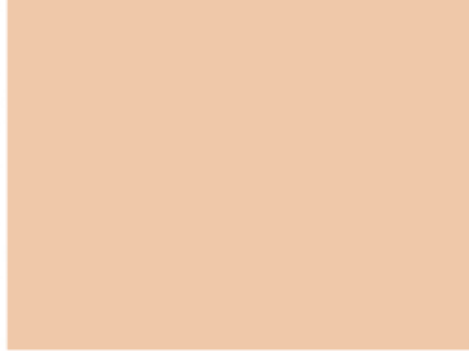
4/1/2014 – 3/31/2015

\$143.868 million



History of SPLOST TVGwinnett





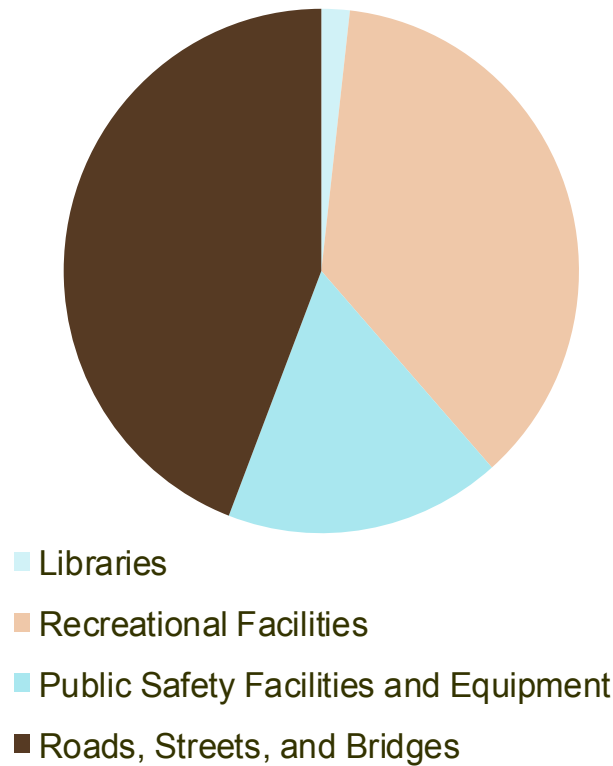
County SPLOST Update



Gwinnett County

2005 SPLOST Program

2005 SPLOST Program Budget

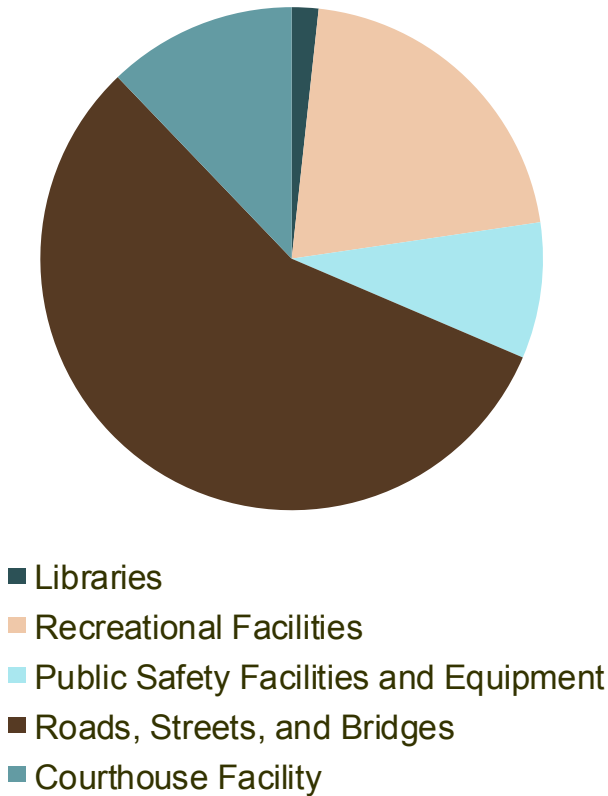


Program Budget	\$ 568,909,893
Libraries	\$5,659,252
Recreational Facilities	\$208,568,253
Public Safety Facilities and Equipment	\$ 98,581,364
Roads, Streets, and Bridges	<u>\$ 249,885,225</u>
Total Program Expenditures-to-date (98.9%)	\$ 562,694,094

Gwinnett County

2009 SPLOST Program

2009 SPLOST Program Budget



Program Budget	\$ 621,391,498
Libraries	\$ 802,425
Recreational Facilities	\$72,287,718
Public Safety Facilities and Equipment	\$33,828,033
Roads, Streets, and Bridges	\$267,267,085
Courthouse Facility	<u>\$ 1,173,805</u>
Total Program Expenditures-to-date (60.4%)	\$375,359,066

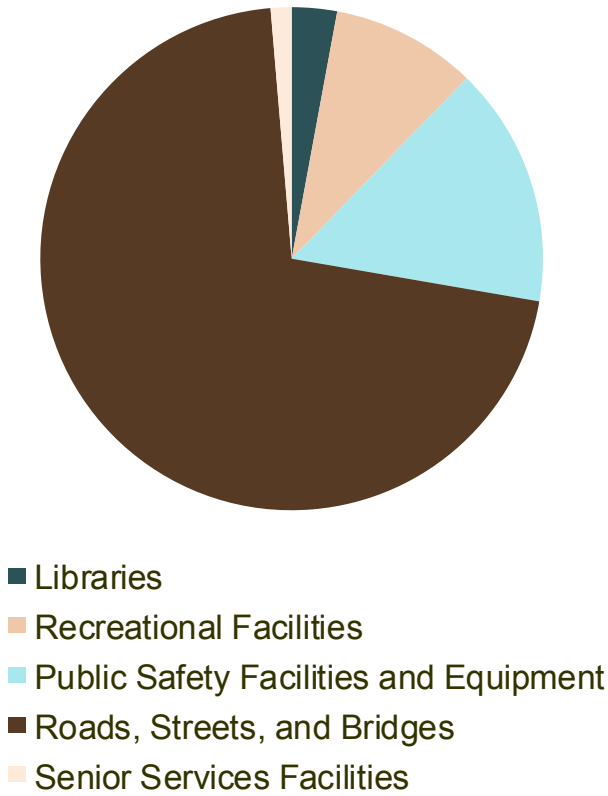
2014 SPLOST Program: \$143.8 million (since inception)



Gwinnett County

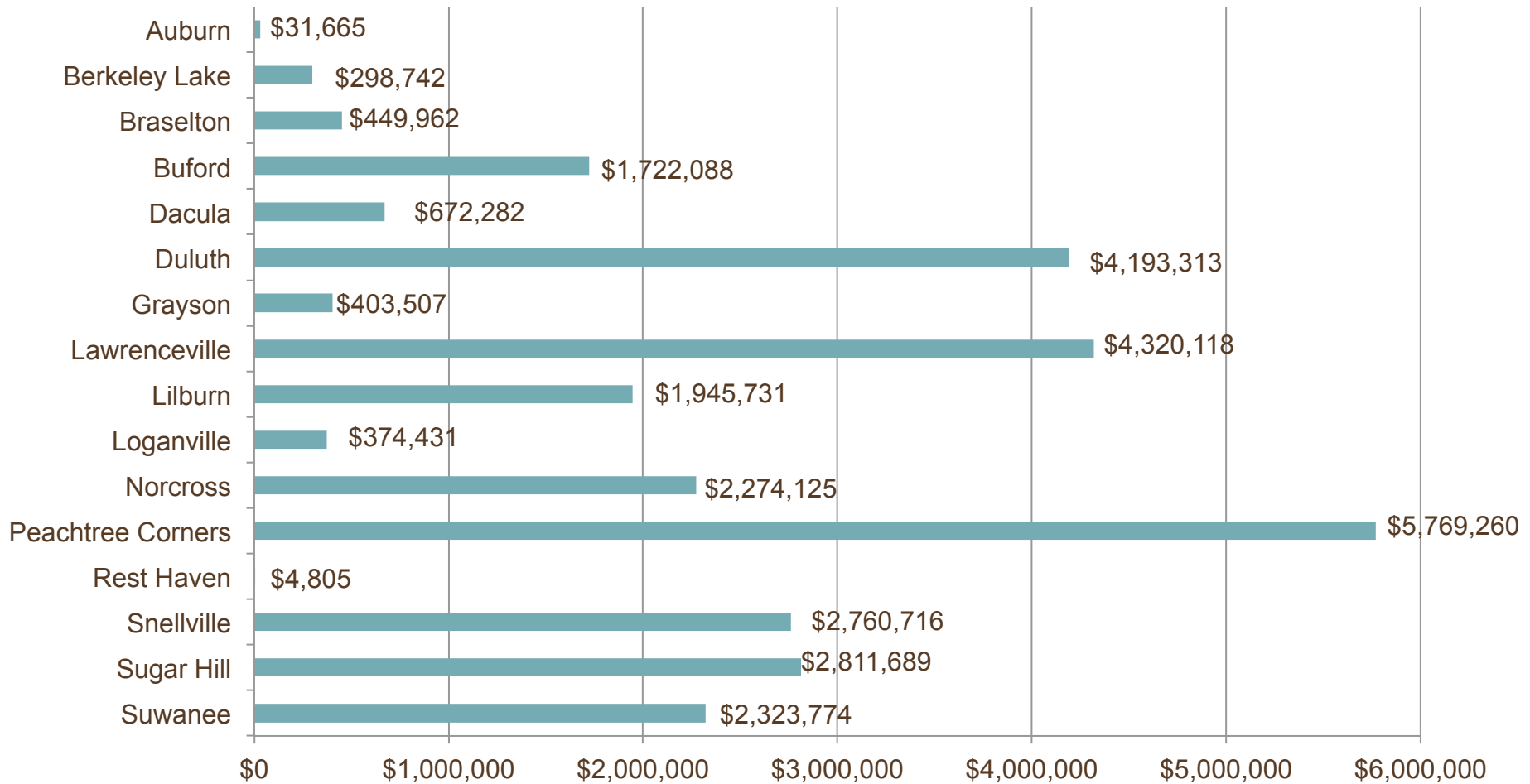
2014 SPLOST Program

2014 SPLOST Program Budget



Program Budget	\$ 334,031,894
Libraries	\$0
Recreational Facilities	\$3,490,958
Public Safety Facilities and Equipment	\$6,884,394
Roads, Streets, and Bridges	\$17,311,359
Senior Service Facilities	<u>\$ 367,102</u>
Total Program Expenditures-to-date (8.4%)	\$28,053,813

2014 SPLOST Distribution by City



SPLOST

Recreational Facilities





Mountain Park Aquatic Center Filter Replacement

SPLOST

Recreational Facilities



Bethesda Park Multipurpose Fields



Architect:



Contractor:

Richards Construction Co., Inc.

Future Site of the Fire Station 10 Relocation



Funded by the **Special Purpose Local Option Sales Tax**

Fire Station 10 Relocation, Groundbreaking May 5, 2015



Architect:



Contractor:

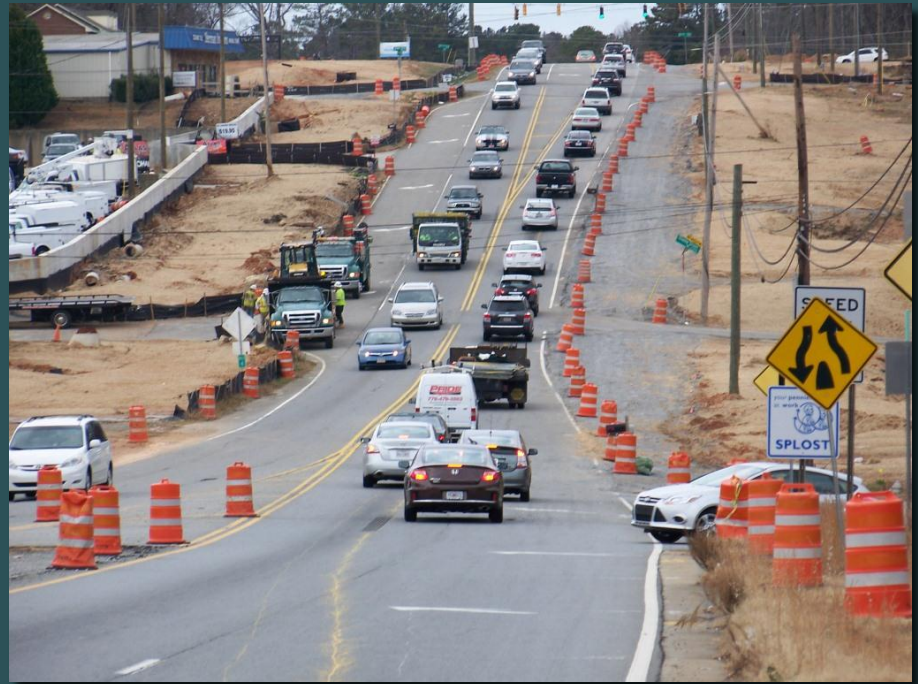
C P Richards Construction Co., Inc.

Future Site of
Fire Station 31



Funded by the **Special Purpose Local Option Sales Tax**

Fire Station 31, Groundbreaking May 5, 2015



SR 20 from Peachtree Industrial Boulevard to the Chattahoochee River widening and bridge replacement

- \$7 million SPLOST contribution
- \$85 million Federal and State

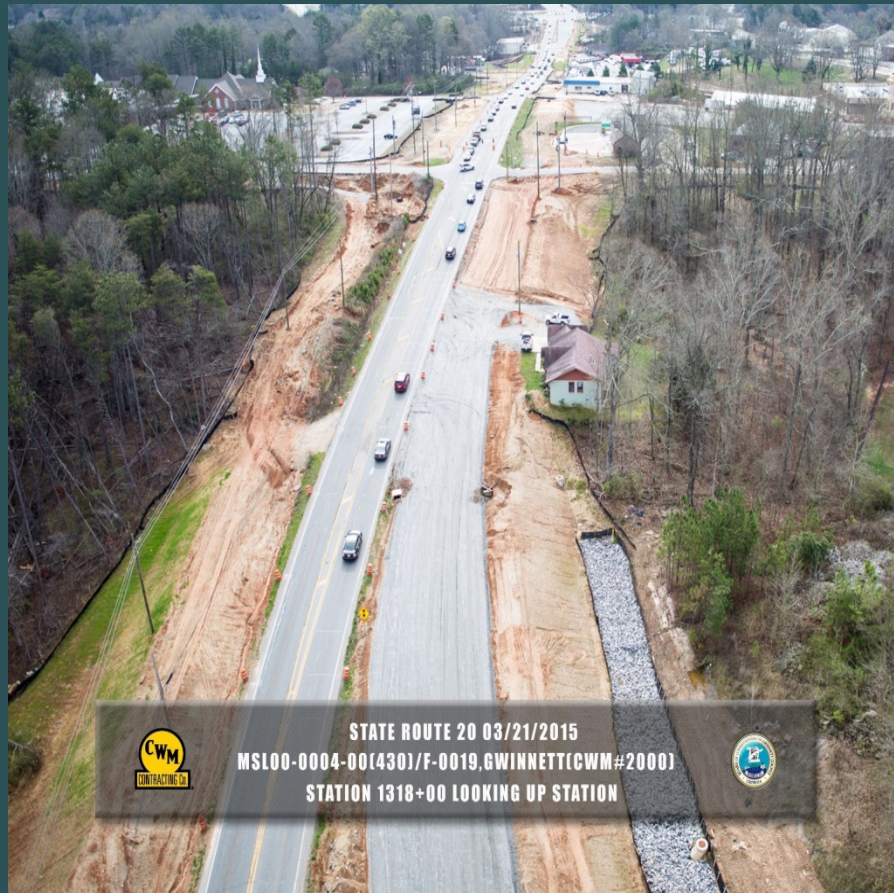
SPLOST

Roads, Streets, and Bridges

State Route 20



State Route 20



SPLOST

Roads, Streets, and Bridges

State Route 20



State Route 20



Lilburn Main Street Relocation



Jimmy Carter Boulevard Diverging Diamond Interchange



State Route 324 / Gravel Springs Road (Jim Moore Road to Dacula Road)



State Route 324 / Gravel Springs Road at SR 124 / Braselton Highway



State Route 324 / Gravel Springs Road at I-85 Interchange



SR 20 / BUFORD DRIVE AT I-85

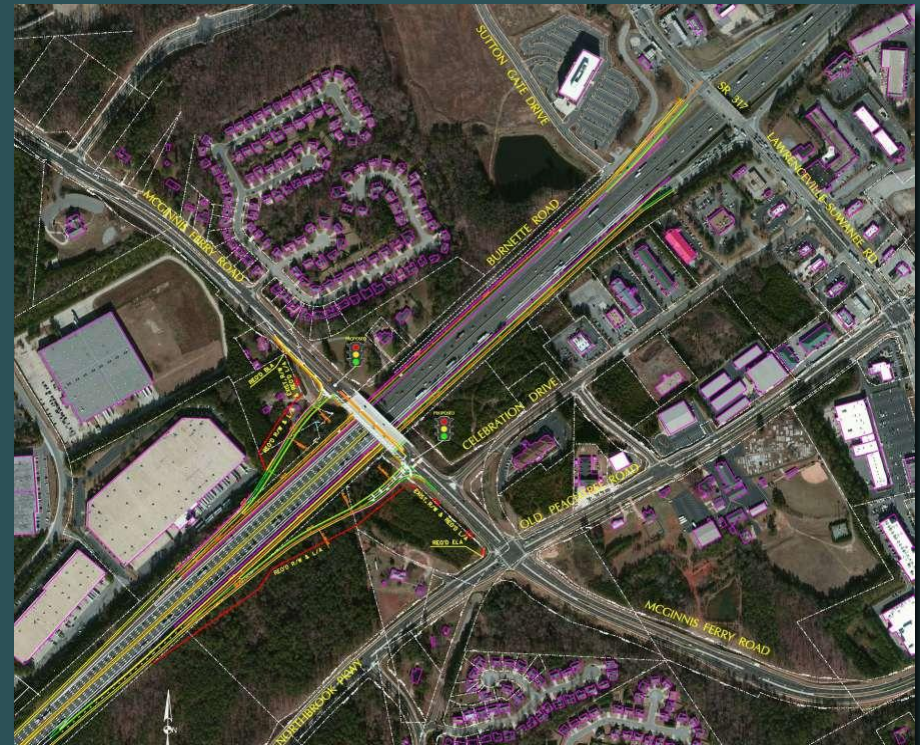


HAMILTON MILL ROAD AT I-85

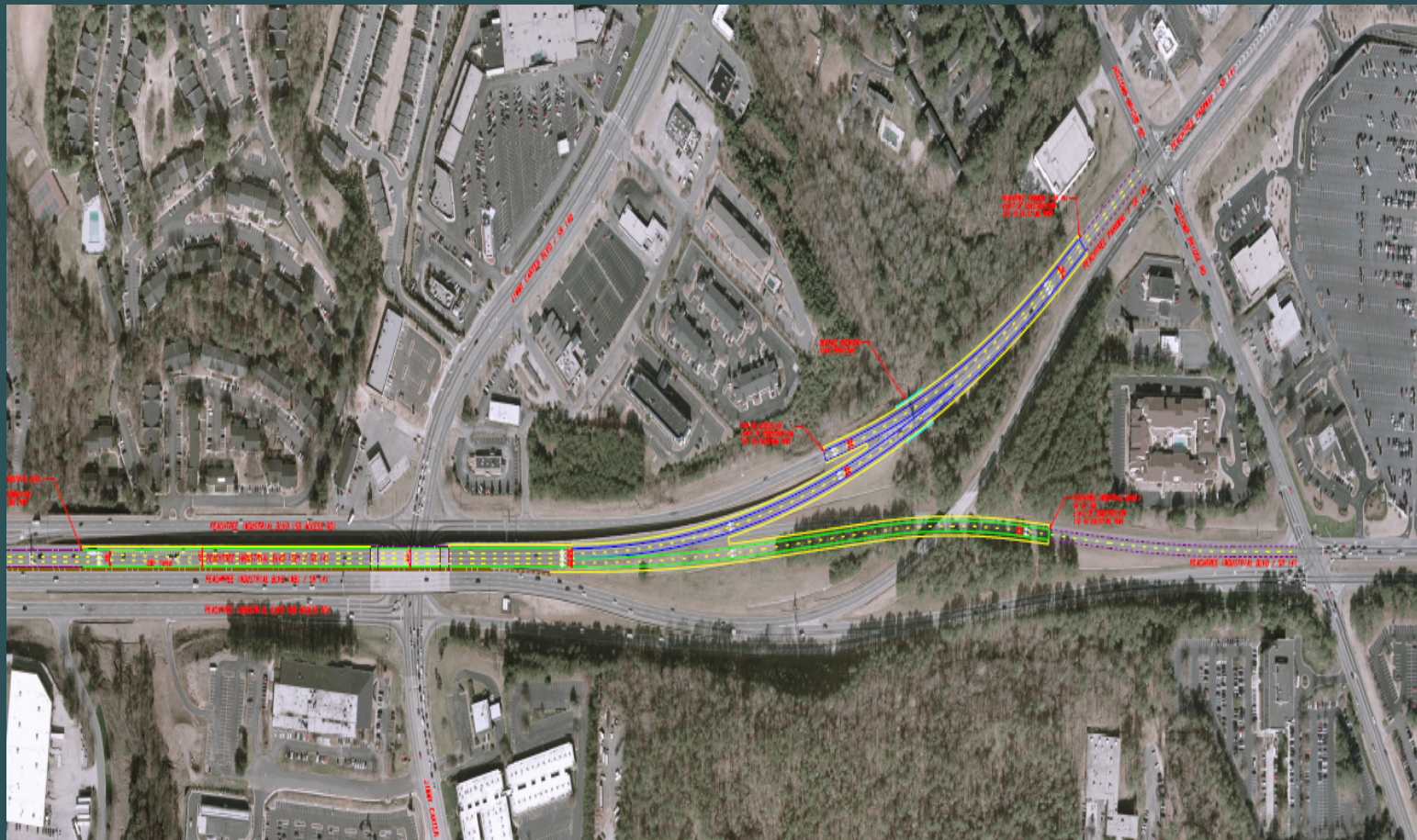
Peachtree Industrial Boulevard (McGinnis Ferry Road to Moore Road)

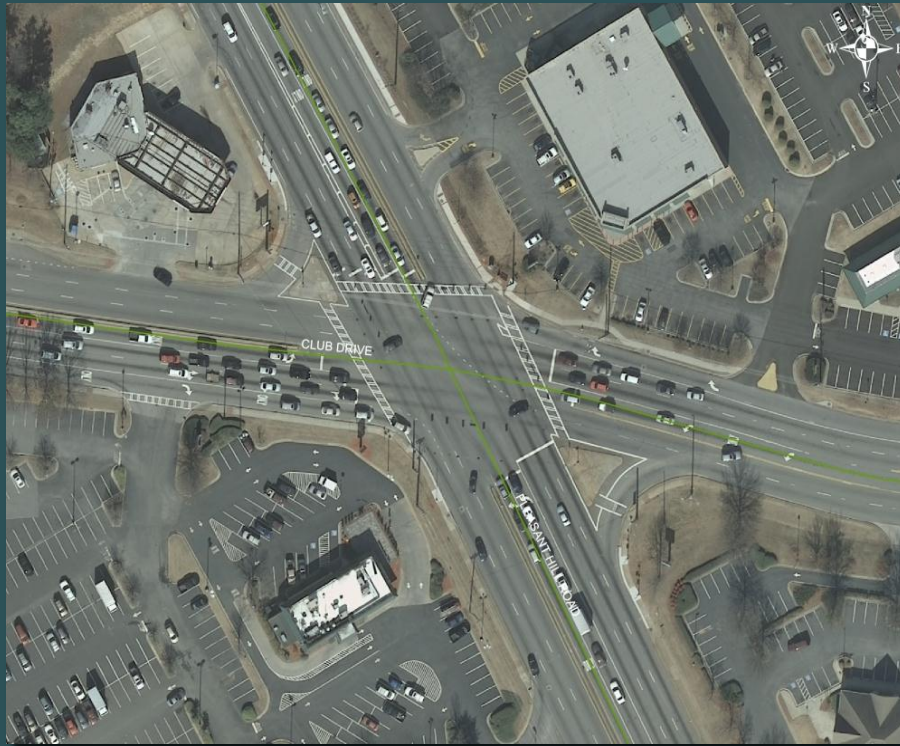


McGinnis Ferry Road at I-85 Interchange



State Route 141 at Peachtree Industrial Boulevard





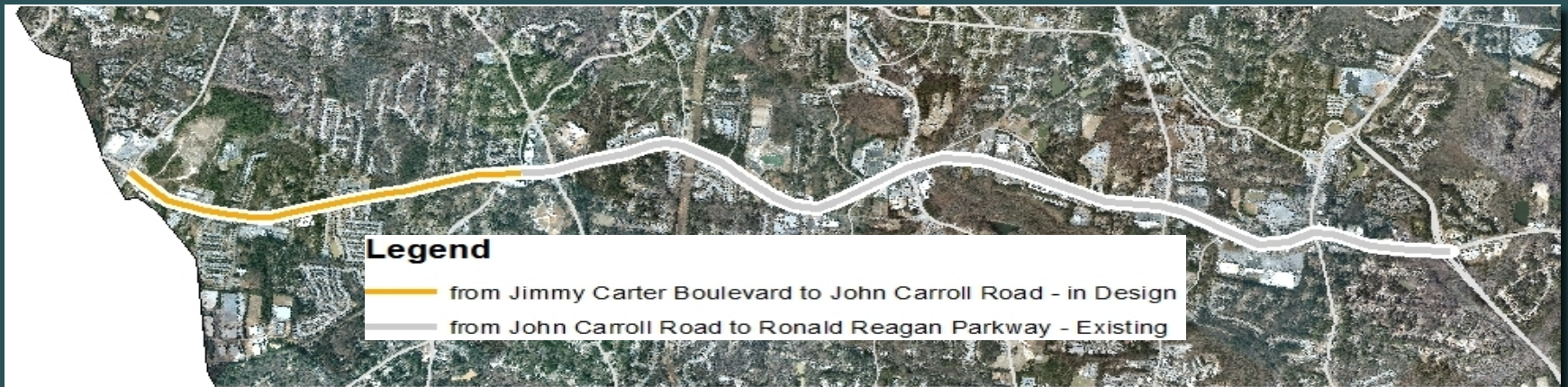
Pleasant Hill Road at Club Drive



**SR 124 / Braselton Highway
at Prospect Road**

Roads, Streets, and Bridges

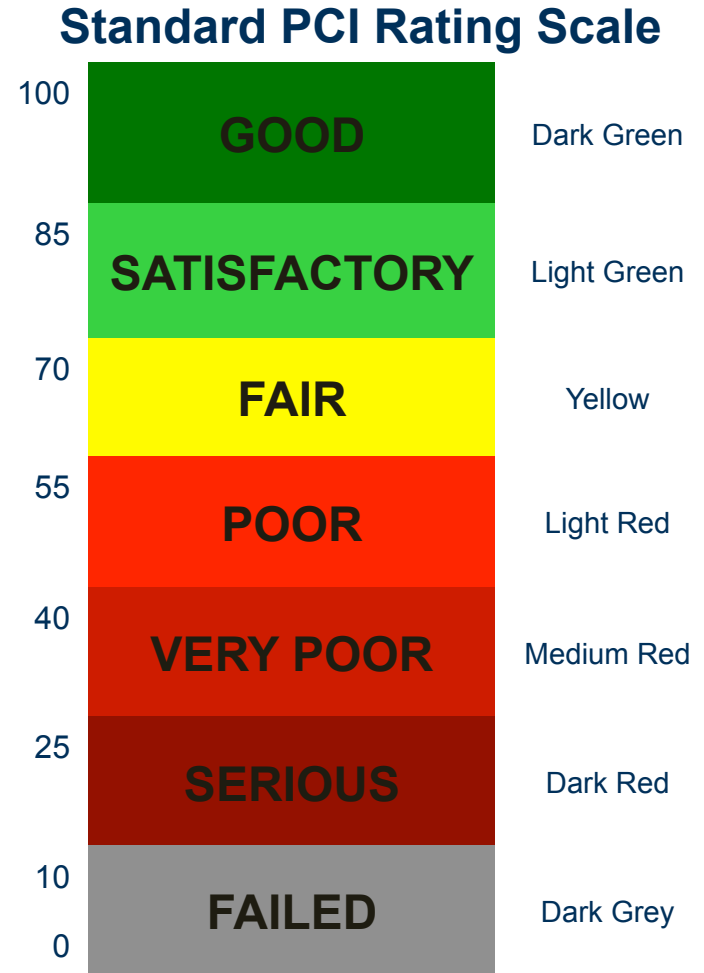
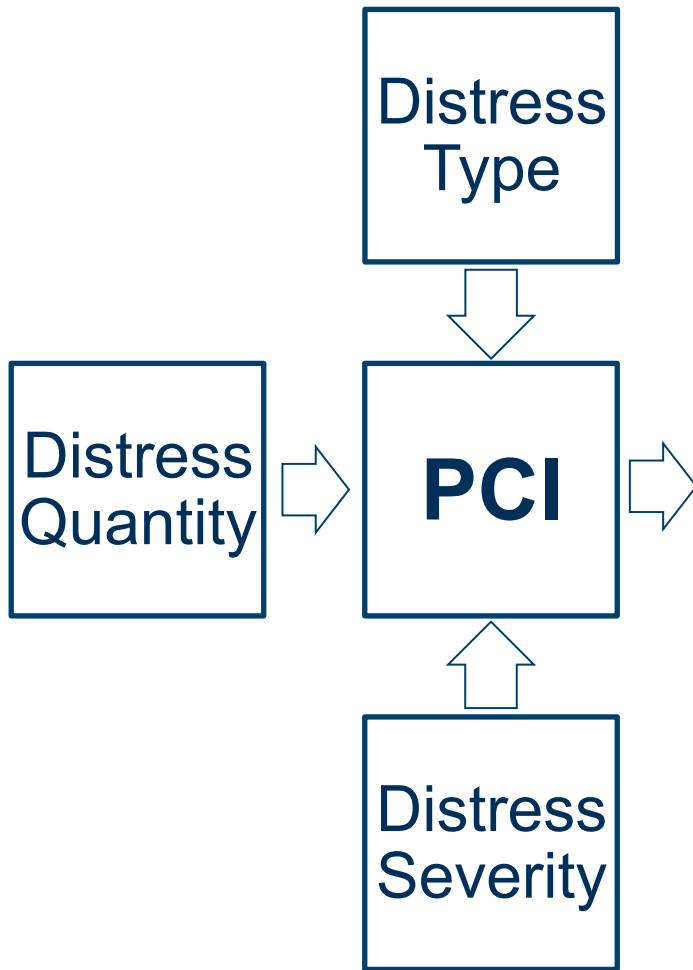
US 29 / SR 8 / Lawrenceville Highway



This project will complete continuous sidewalks from Jimmy Carter Boulevard to Ronald Reagan Parkway.

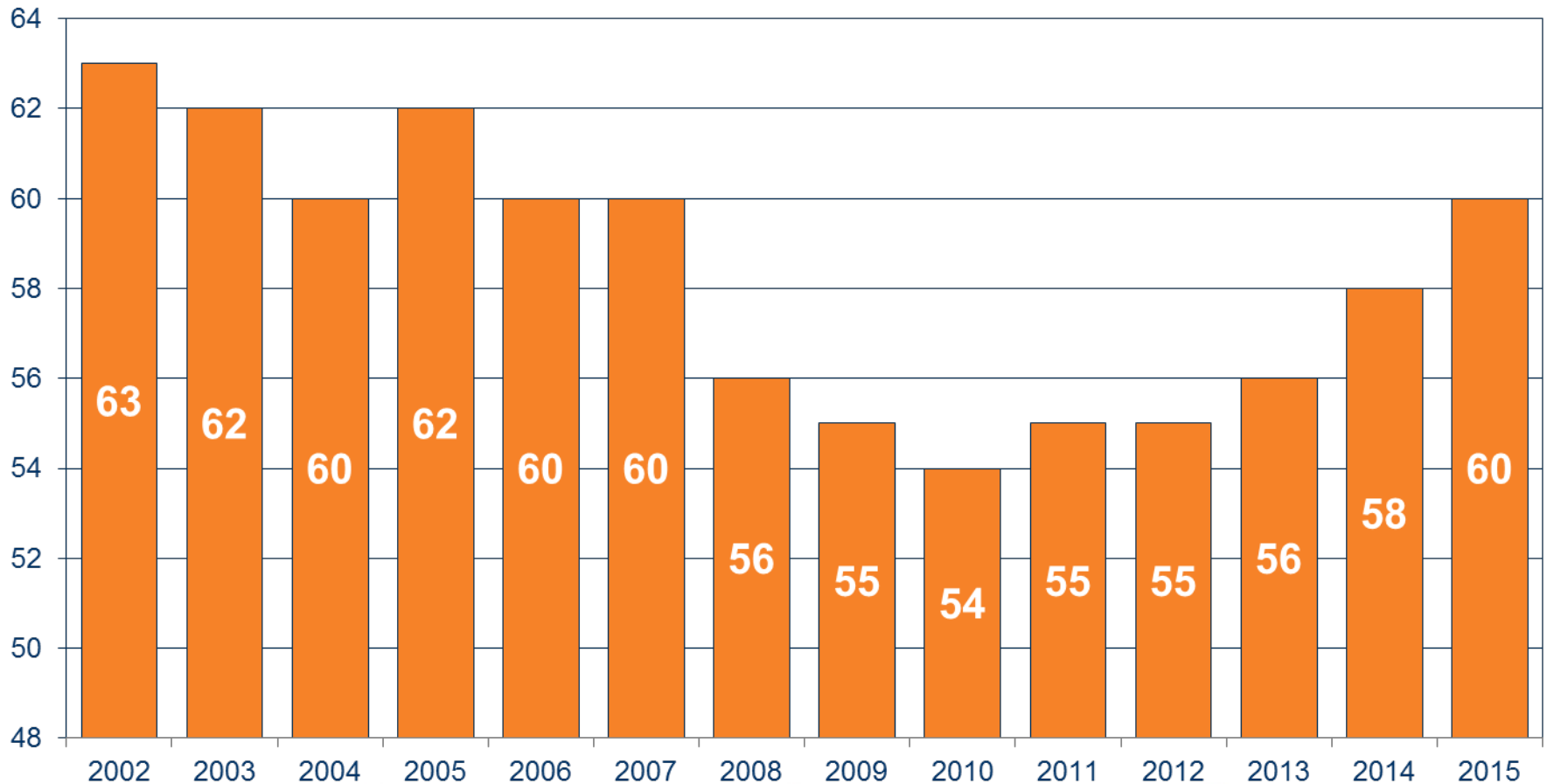


PAVEMENT CONDITION INDEX (PCI)



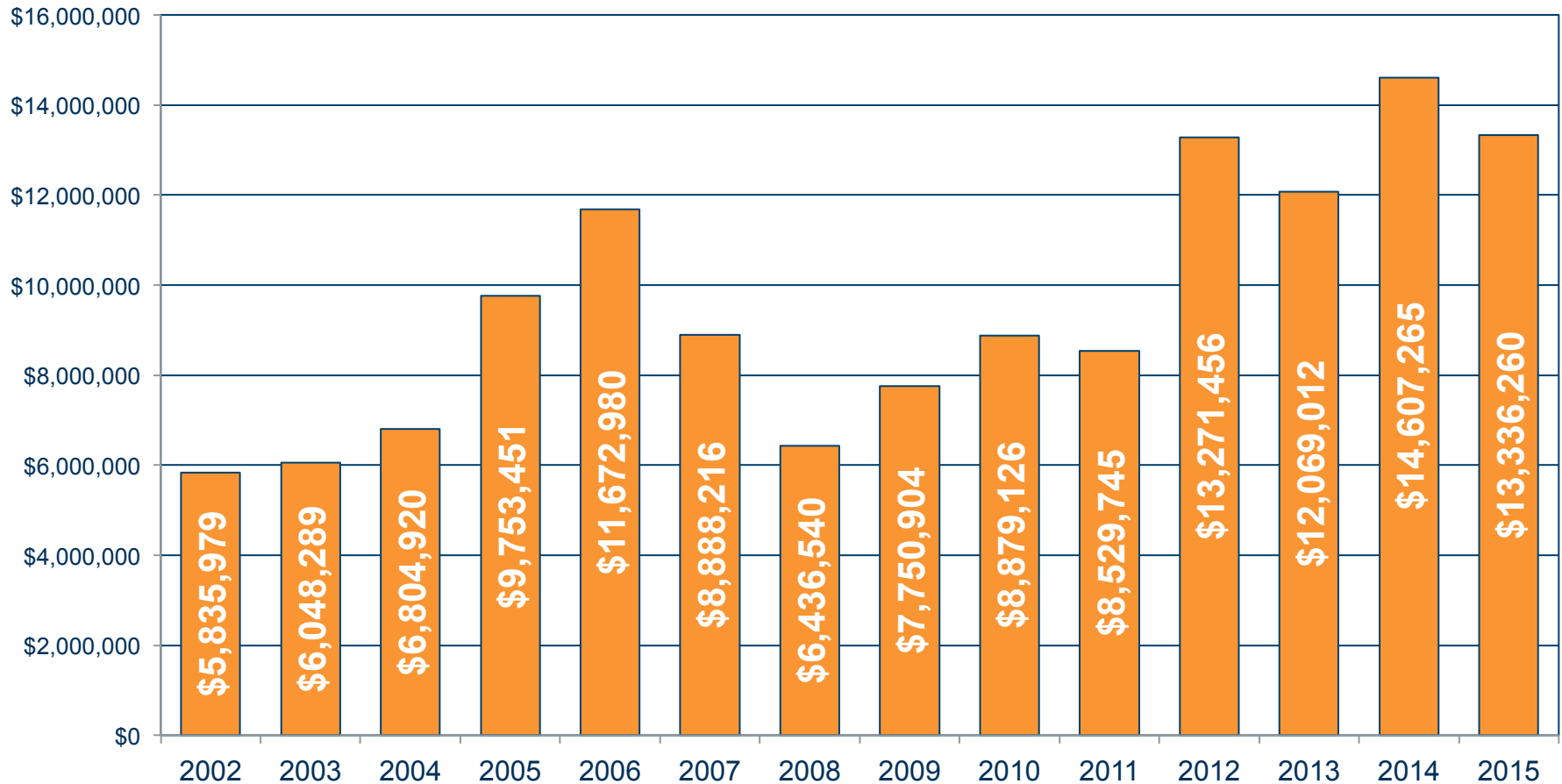
CONDITIONS OF ROADS BEING RESURFACED

GWINNETT COUNTY PCI (*average*)



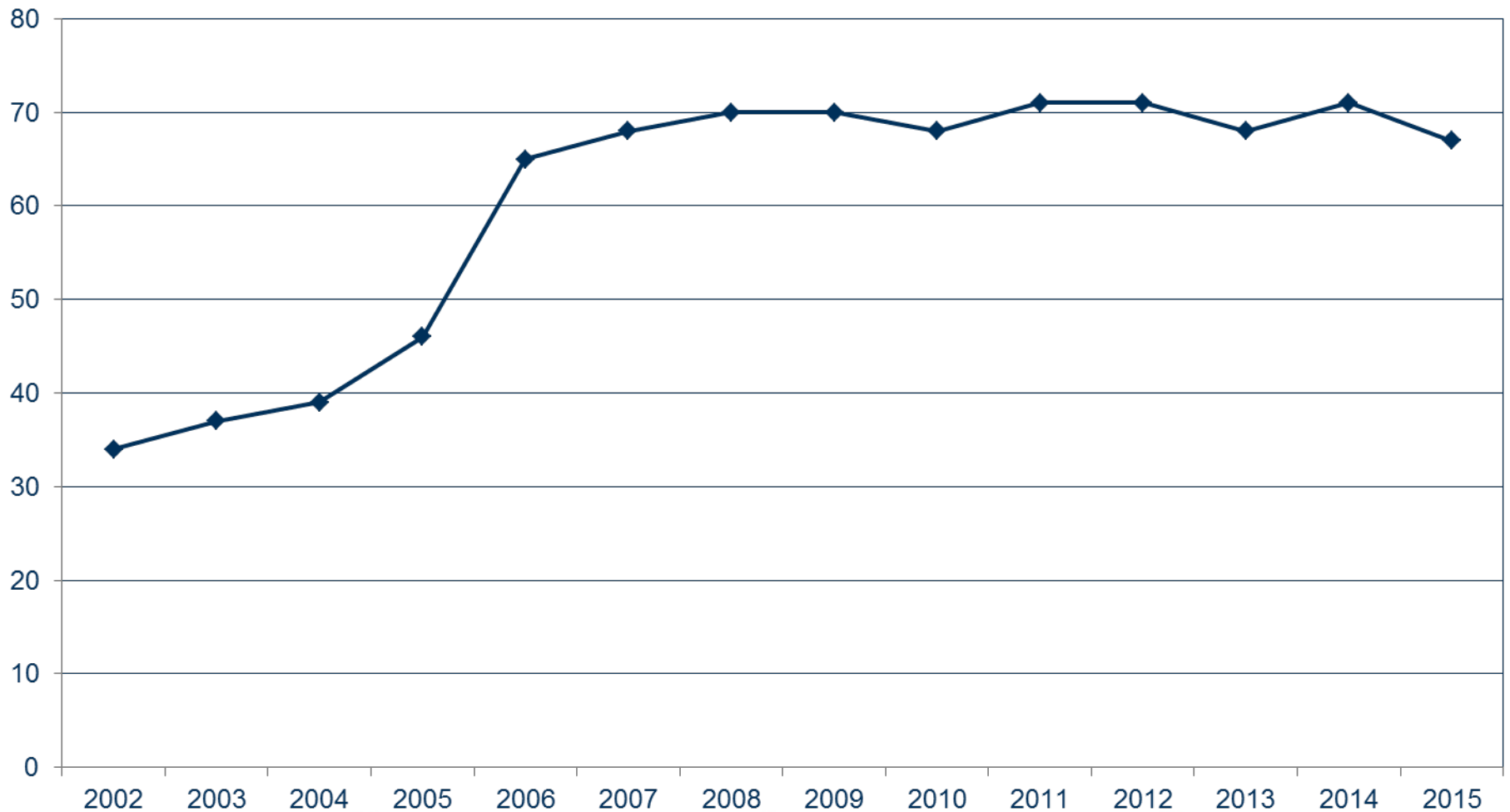
RESURFACING BY THE NUMBERS

CONTRACT AMOUNTS



ASPHALT PRICE

(\$ / TON)



SPLOST

Roads, Streets, and Bridges



**Peachtree Industrial Boulevard from
Suwanee Dam Road to Pine Crest
PCI 54**



**South Norcross Tucker Road from Jimmy
Carter Boulevard to County-line
PCI 61**

SPLOST



City SPLOST Project Update



SPLOST Technical Committee Members

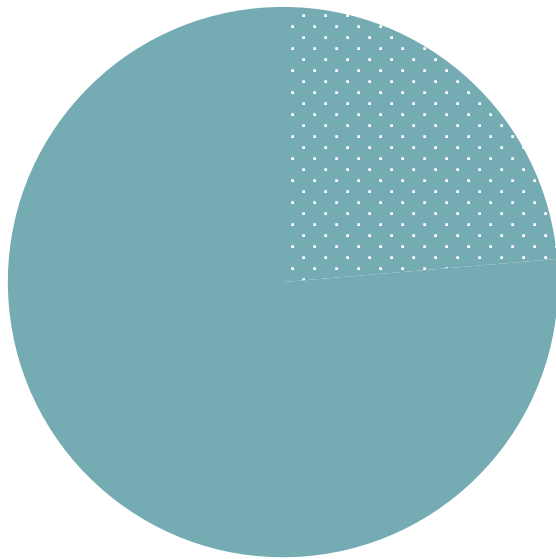
City Manager	City
Bill Johnsa	Lilburn
Butch Sanders	Snellville
Bryan Kerlin	Buford
James Riker	Duluth
Paul Radford	Sugar Hill
Marty Allen	Suwanee
Randy Meacham	Gwinnett Municipal Association



SPLOST

Peachtree Corners

2014 SPLOST Program Budget



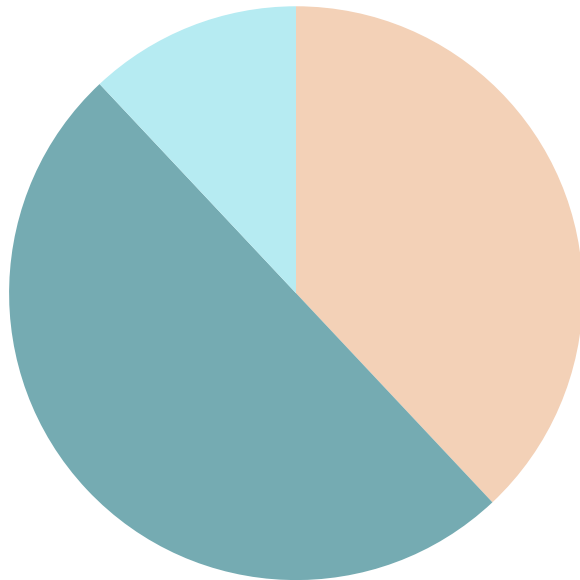
■ Joint Transportation Projects

■ Roads, Streets, and Bridges

Total Program Budget	\$6,418,650
Roads, Streets, and Bridges	\$1,381,000
Joint Transportation Projects	\$0
Total Program Expenditures-to-date	\$1,381,000

Lilburn

2005 SPLOST Program Budget

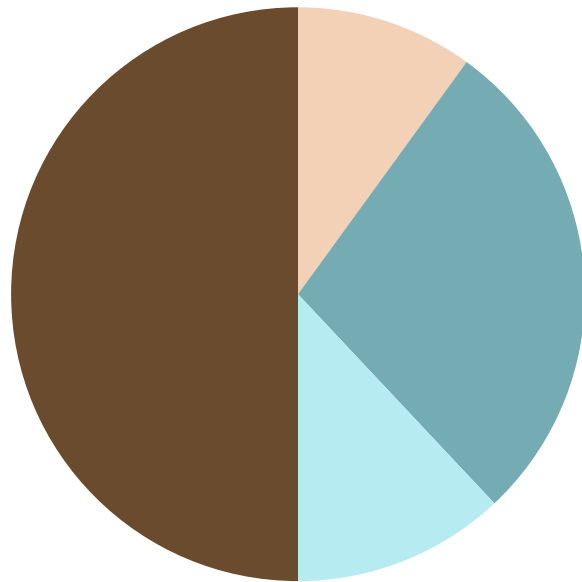


- Recreational Facilities
- Roads, Streets, and Bridges
- Public Safety Facilities and Equipment

Total Program Budget	\$9,888,398
Recreational Facilities	\$3,543,184
Roads, Streets, and Bridges	\$4,735,445
Public Safety Facilities and Equipment	<u>\$1,191,159</u>
Total Program Expenditures-to-date	\$9,469,788

Lilburn

2009 SPLOST Program Budget

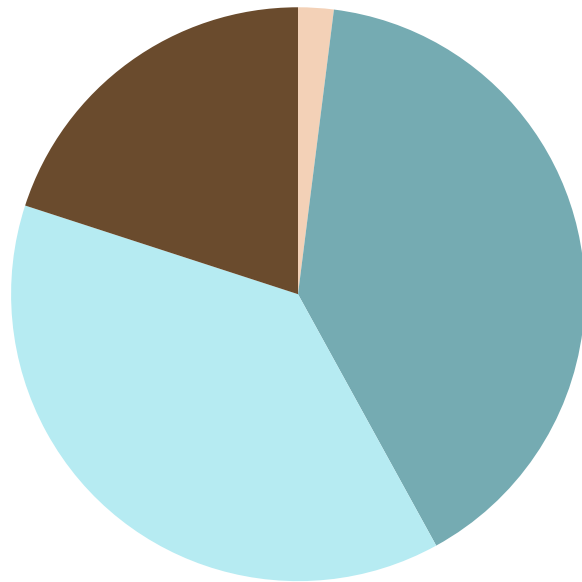


- Recreational Facilities
- Roads, Streets, and Bridges
- Public Safety Facilities and Equipment
- Administrative Facilities

Total Program Budget	\$9,963,871
Recreational Facilities	\$773,107
Roads, Streets, and Bridges	\$2,158,901
Public Safety Facilities and Equipment	\$927,728
Administrative Facilities	<u>\$615,799</u>
Total Program Expenditures-to-date	\$4,475,535

Lilburn

2014 SPLOST Program Budget



- Recreational Facilities
- Roads, Streets, and Bridges
- Public Safety Facilities and Equipment
- Administrative Facilities

Total Program Budget	\$5,724,864
Recreational Facilities	\$33,760
Roads, Streets, and Bridges	\$197,311
Public Safety Facilities and Equipment	\$585,236
Administrative Facilities	<u>\$6,737</u>
Total Program Expenditures-to-date	\$823,044

SPLOST

Lilburn



F-0861 Lilburn Main Street
ReAlignment

Print #150328752

Date: 03/28/15

Lat/Lon: 33.890583 -84.140628

Order No. 56553

Aerial Photography, Inc. 954-568-0484

SPLOST

Lilburn



F-0861 Lilburn Main Street
ReAlignment

Print #150328751

Date: 03/28/15

Lat/Lon: 33.890583 -84.140628

Order No. 56553



Aerial Photography, Inc. 954-568-0484

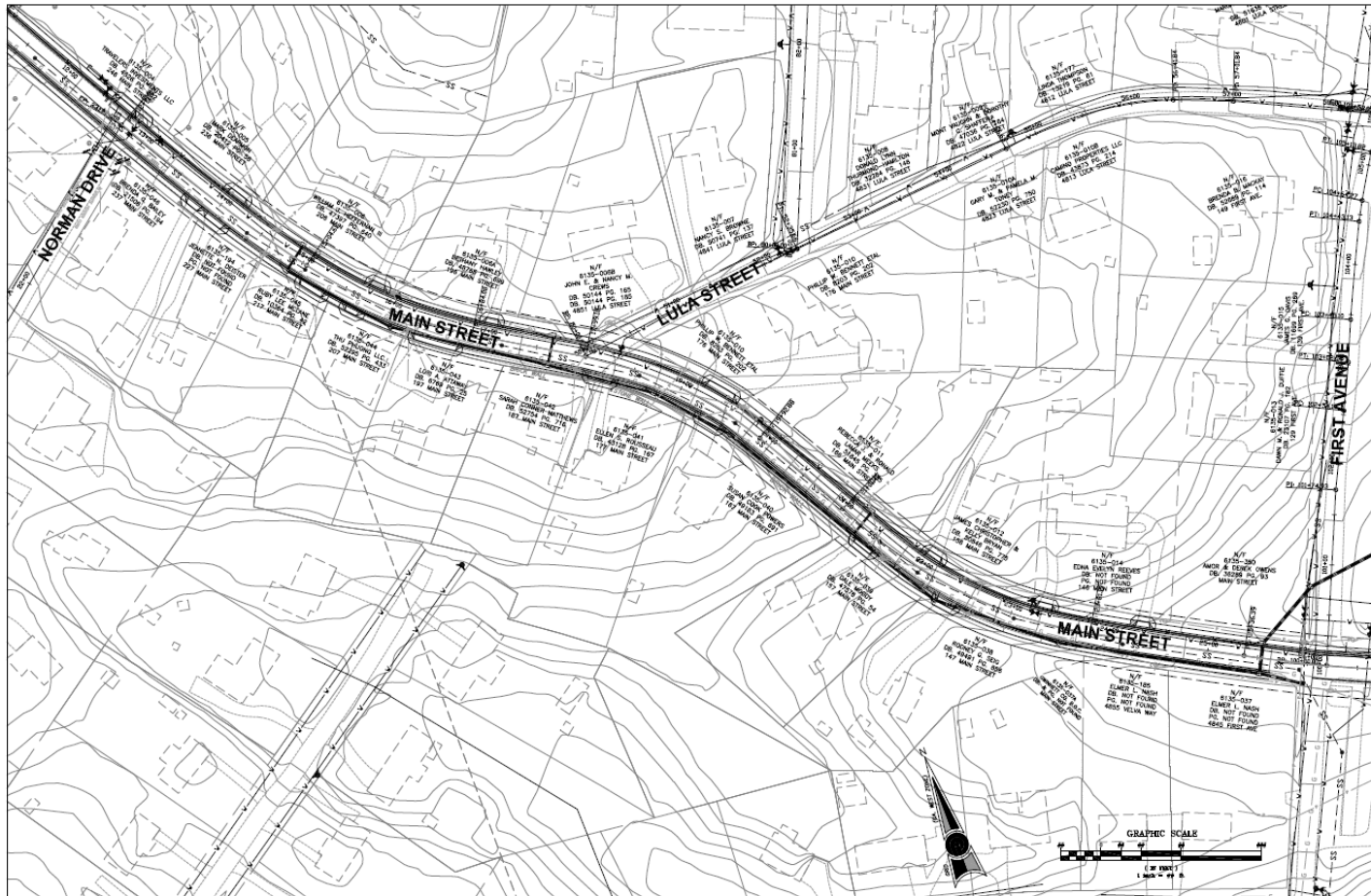
SPLOST

Lilburn





City Hall Placement



Main Street Drainage and Sidewalk

CONSTRUCTION PLANS CITY OF LILBURN POPLAR STREET SIDEWALK IMPROVEMENTS



AREA MAP
1" = 250'

INDEX TO DRAWINGS		
DRAWING NO.	SHEET NO.	DESCRIPTION
C-1	1 OF 8	COVER SHEET
C-2	2 OF 8	GENERAL NOTES & DETAIL ESTIMATE
C-3	3 OF 8	REINFORCEMENT PLAN
C-4	4 OF 8	SEWERAGE SITE PLAN
C-5	5 OF 8	SEWER CONTROL NOTES
C-6	6 OF 8	SEWER CONTROL NOTES
C-7	7 OF 8	CONSTRUCTION DETAILS
C-8	8 OF 8	CONSTRUCTION DETAILS

PROJECT DESCRIPTION:

INSTALL A FIVE (5) FOOT WIDE SIDEWALK ON THE EAST SIDE OF POPLAR STREET FROM THE LULA STREET INTERSECTION TO THE KILLIAN HILL ROAD INTERSECTION AND UP TO CHURCH STREET. THIS PROJECT ALSO INCLUDES THE EXTENSION OF 5 FOOT WIDE SIDEWALK ALONG THE SOUTH SIDE OF KILLIAN HILL ROAD FROM POPLAR STREET TO CHURCH STREET. ADJUSTMENT TO MINOR STRUCTURES, WATER METERS, WATER VALVES, MANHOLES, ETC. WILL BE REQUIRED. STORM SEWER STRUCTURES (TOPS ONLY) WILL BE REMOVED AND REFORCED AS NECESSARY FOR SAFETY AND CONSISTENCY WITH PROPOSED SIDEWALK. GRADING WILL BE REQUIRED FOR SIDEWALK INSTALLATION. PROPOSED CONSTRUCTION TO BE CONTAINED WITHIN EXISTING RIGHT-OF-WAY.

OWNER/DEVELOPER:

CITY OF LILBURN
79 MAIN STREET
LILBURN, GEORGIA 30047
CONTRACT NO. 07A008
DIRECTOR OF PLANNING AND
BUDGET PLANNING
7700 882-2810



COUNCIL:

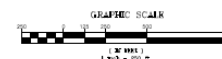
JOHNNY CRIST, MAYOR
SCOTT BATTERTON, COUNCILMAN
THOMAS WISSE, COUNCILMAN
TIM DAVIS, COUNCILMAN
SCOTT PRICE, COUNCILMAN

FOR INFORMATION ONLY:

79' PROJECT AREA - 3' MIN. WIDE
79' PROJECT AREA - 3' MIN. WIDE

RECEIVING WATERS:

- YELLOW RIVER
- CAMP CREEK
- JACKSON CREEK

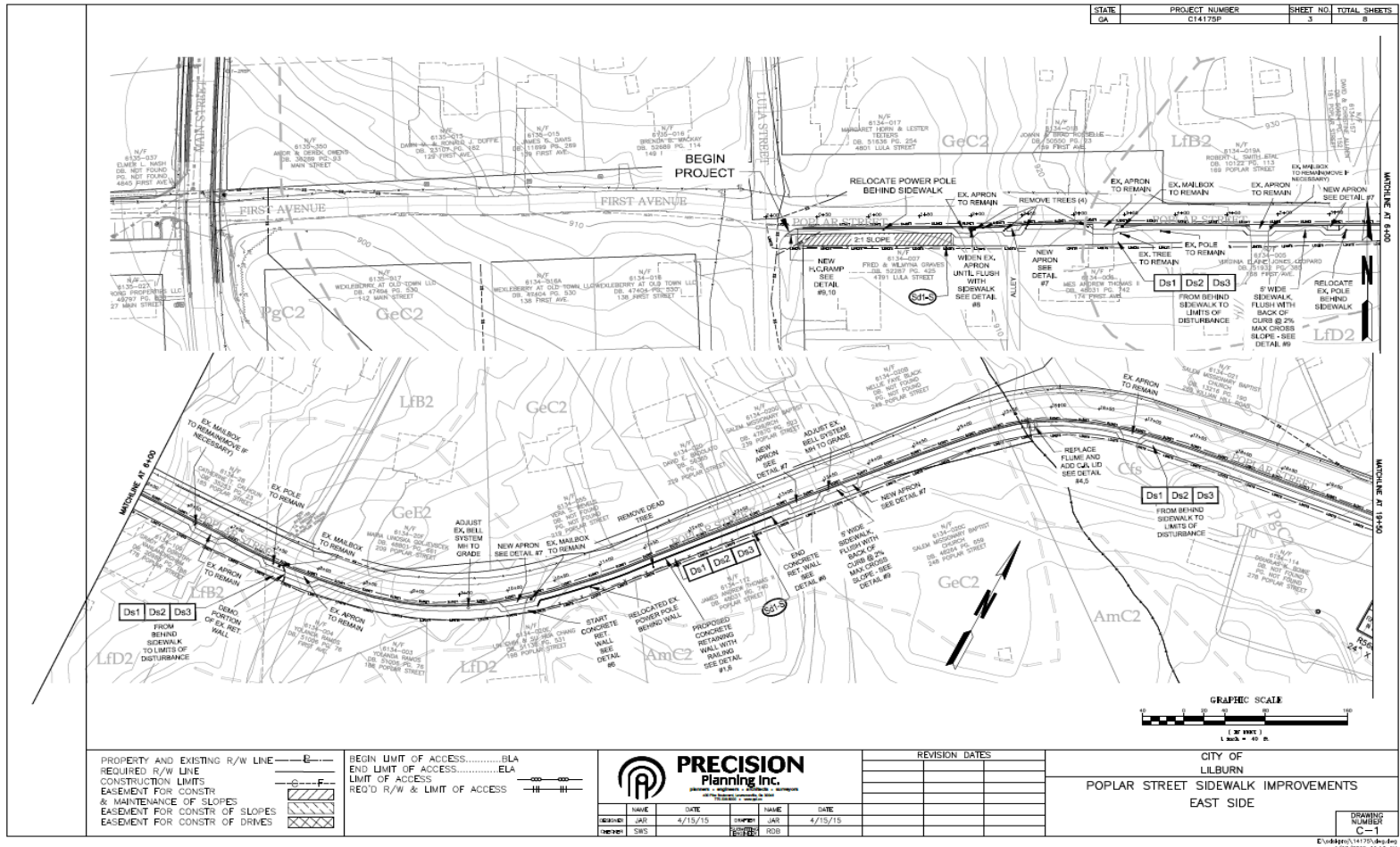


PLAN DATE:
04/15/15

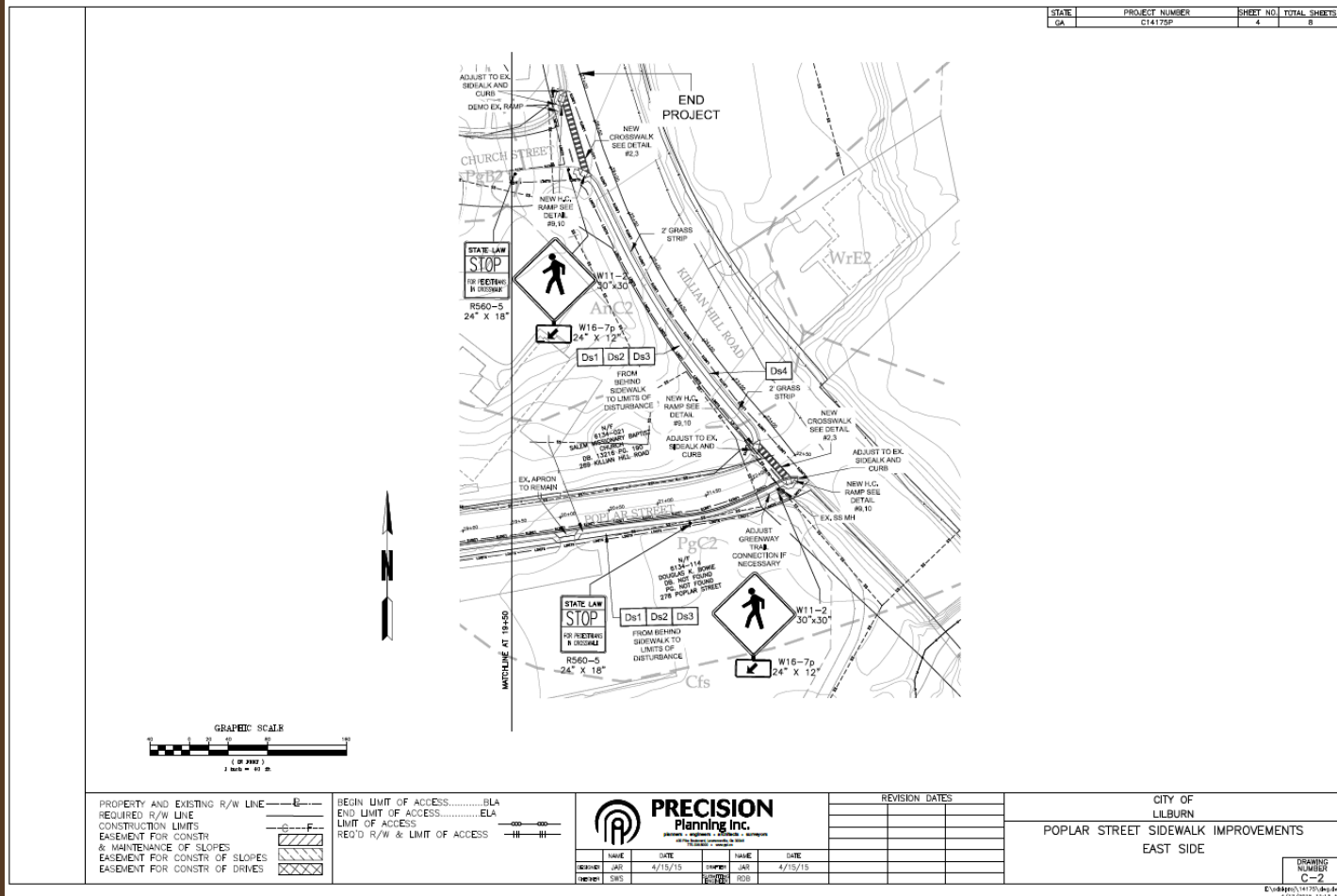


490 Hwy 280, Lawrenceville, GA 30046
770.336.3000 • www.pp-inc.com
PFI Project Number: C14475P

Poplar Street Sidewalk Improvements



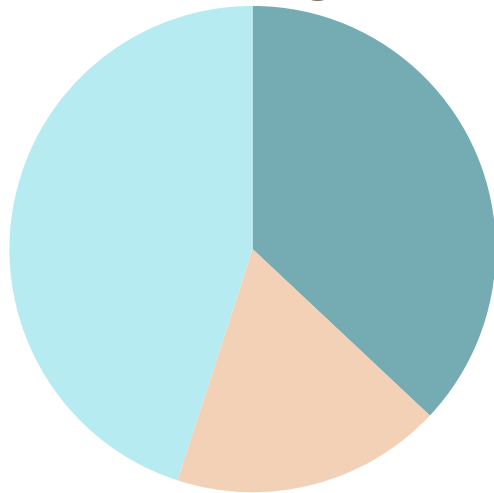
Poplar Street Sidewalk Improvements



Poplar Street Sidewalk Improvements

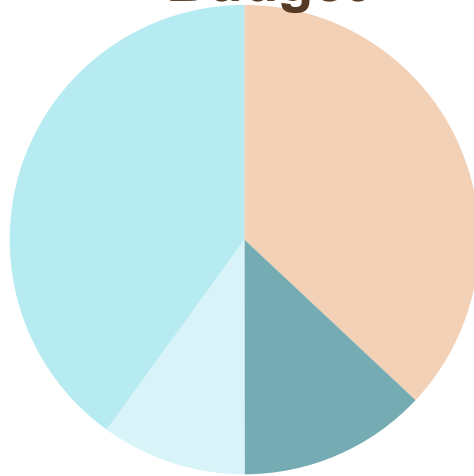
Snellville

**2005 SPLOST
Program
Budget**



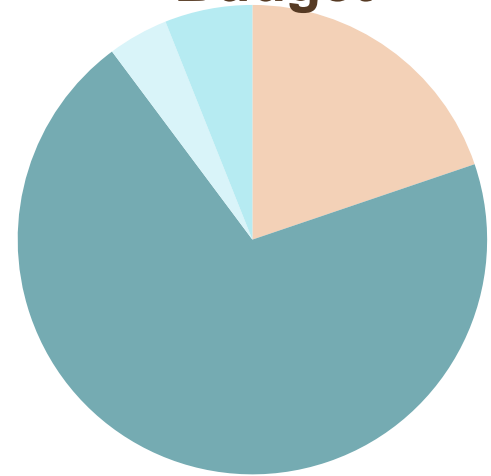
- Roads, Streets, and Bridges
- Recreational Facilities
- Public Safety Facilities/Equip.

**2009 SPLOST
Program
Budget**



- Recreational Facilities
- Roads, Streets, and Bridges
- Administrative Facilities
- Public Safety Facilities/Equip.

**2014 SPLOST
Program
Budget**



- Recreational Facilities
- Roads, Streets, and Bridges
- Administrative Facilities
- Public Safety Facilities/Equip.

Briscoe Park MASTER PLAN UPDATE



DECEMBER 8, 2014



SPLOST

Snellville



T.W. Briscoe Park

SPLOST

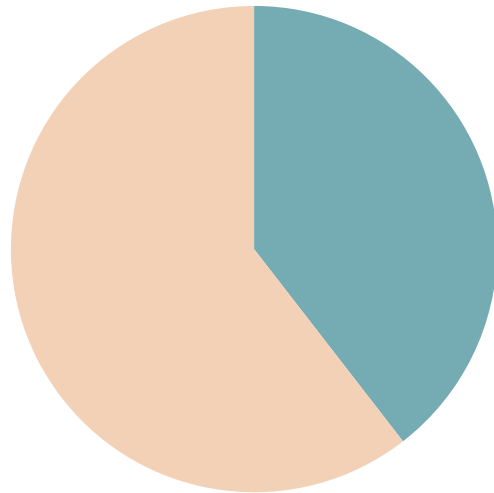
Snellville



Towne Center: Livable Centers Initiative Project

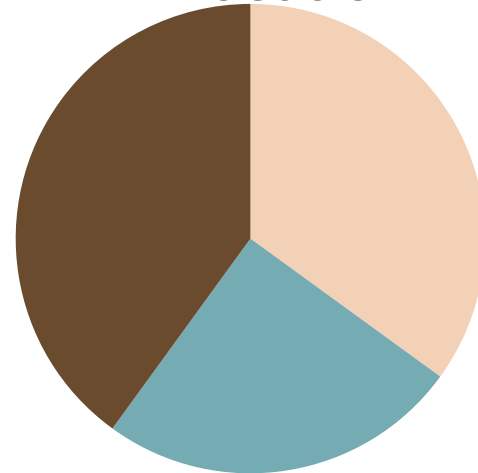
Grayson

**2005 SPLOST
Program
Allocation**



■ Roads, Streets, and Bridges
■ Recreational Facilities

**2009 SPLOST
Program
Allocation**



■ Recreational Facilities
■ Roads, Streets, and Bridges
■ Administrative Facilities

SPLOST

Loganville



Loganville Fire Station 3



Loganville Fire Truck

SPLOST

Loganville



SPLOST

Buford



Before



After

East Main Street: Streetscape

SPLOST

Buford



Before



After

East Main Street: Streetscape

SPLOST

Buford



Shadburn Ferry Road at East Main Street

SPLOST

Buford



South Lee Street from East Main to Buford Highway

SPLOST

Buford



Buford Youth Sports Complex

SPLOST

Buford



Before



After

South Hill Street Pedestrian Facilities Improvement Project



Before

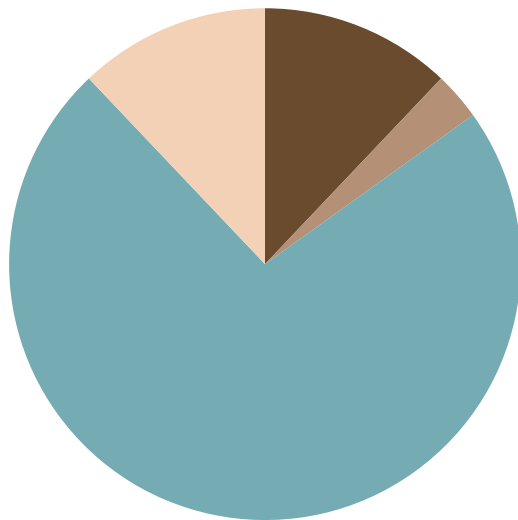


After

South Hill Street Pedestrian Facilities Improvement Project

Buford

2005 SPLOST Program Budget

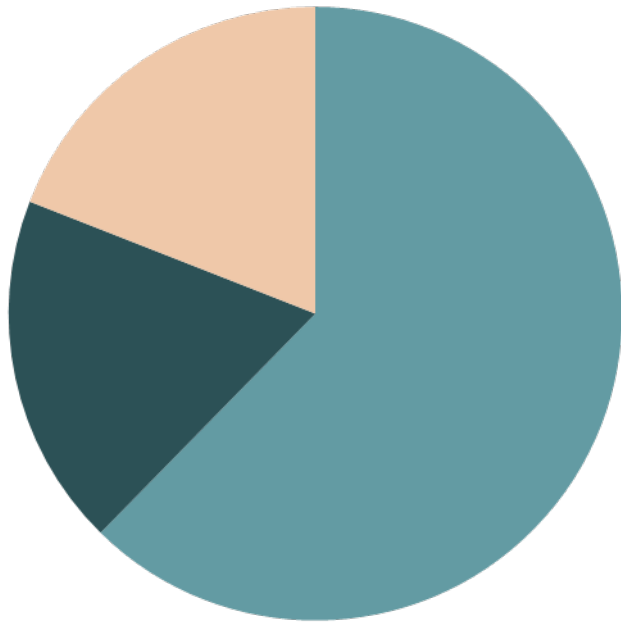


- Administrative Facilities
- Parking Facilities
- Roads, Streets, and Bridges
- Recreational Facilities

Total Program Budget	\$8,276,892
Administrative Facilities (Buford City Hall)	\$1,000,000
Parking Facilities	\$250,000
Roads, Streets, and Bridges	\$6,026,892
Recreational Facilities	\$1,000,000
Total Program Expenditures-to-date	\$8,276,892

Buford

2009 SPLOST Program Budget



- Roads, Streets, and Bridges
- Water and Sewer Expansion
- Recreational Facilities

Total Program Budget	\$8,700,383
Water & Sewer Capital Improvements	\$0
Roads, Streets, and Bridges	\$1,736,927
Recreational Facilities	\$1,200,000
Total Program Expenditures-to-date	\$2,936,927

Auburn has spent 100% of its 2005 SPLOST program allocation.

A portion of the 2009 SPLOST program funds has been spent toward:

- Road repairs
- Road repair equipment
- Stormwater drainage and guardrail improvements



The City of Auburn has purchased two police vehicles with 2014 SPLOST Program revenues



Braselton allocated 100% of its 2005 SPLOST program funds for Roads, Streets, and Bridges.

Completed Projects

- Thompson Mill Road Multi-Use Path
- Repaving the Grand Hickory roundabout

Braselton allocated its 2009 SPLOST program funds as follows:

- 60% for Roads, Streets, and Bridges
- 40% for Water and Sewer Capital Improvement

Current Project

- Braselton LifePath (in conjunction with funds from Braselton CID and 2005 SPLOST)

Rest Haven allocated 100% of its funds for both the 2005 and 2009 SPLOST programs to Roads, Streets, and Bridges.

Current Project

- Buford Highway Widening

Norcross

2009 SPLOST Program Budget



- Recreational Facilities
- Roads, Streets, and Bridges
- Administration Facilities
- Parking Facilities

2014 SPLOST Program Budget



- Recreational Facilities
- Roads, Streets, and Bridges
- Administrative Facilities
- Parking Facilities

SPLOST

Norcross



Johnson Dean Trail

SPLOST

Norcross



Johnson Dean Trail



The Wingo Street sidewalk was constructed on 800 linear feet of unimproved shoulder.



SPLOST

Norcross



KaBOOM is a community-built park at 321 Price Place in Norcross.

SPLOST

Norcross



Lillian Webb Park - Pergola

Design

Main Street Parking/Sidewalks Phase I

Knox Street to SR120

Before

After

SPLOST

Duluth

SR 120 Re-alignment



SPLOST

Duluth



Brookshire Way - before

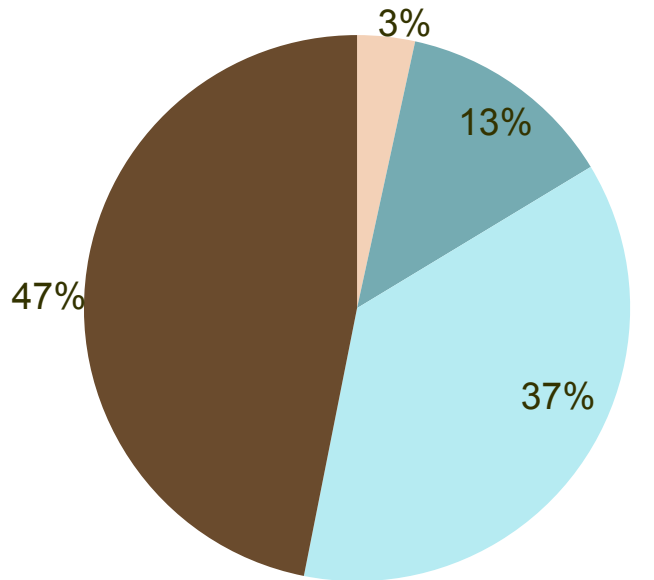


Brookshire Way - after

Full Depth Reclamation

Duluth

2005 SPLOST Program Budget

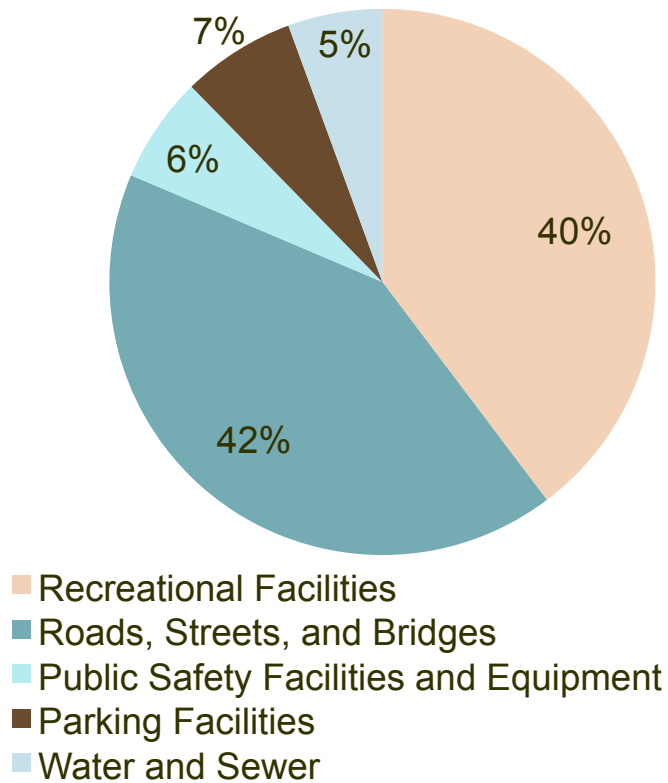


- Recreational Facilities
- Roads, Streets, and Bridges
- Public Safety Facilities and Equipment
- Administrative Facilities

Total Program Budget	\$17,121,655
Recreational Facilities	\$585,094
Roads, Streets, and Bridges	\$1,971,839
Public Safety Facilities and Equipment	\$6,296,229
Administrative Facilities	\$8,025,990
Total Program Expenditures-to-date (99%)	\$16,879,152

Duluth

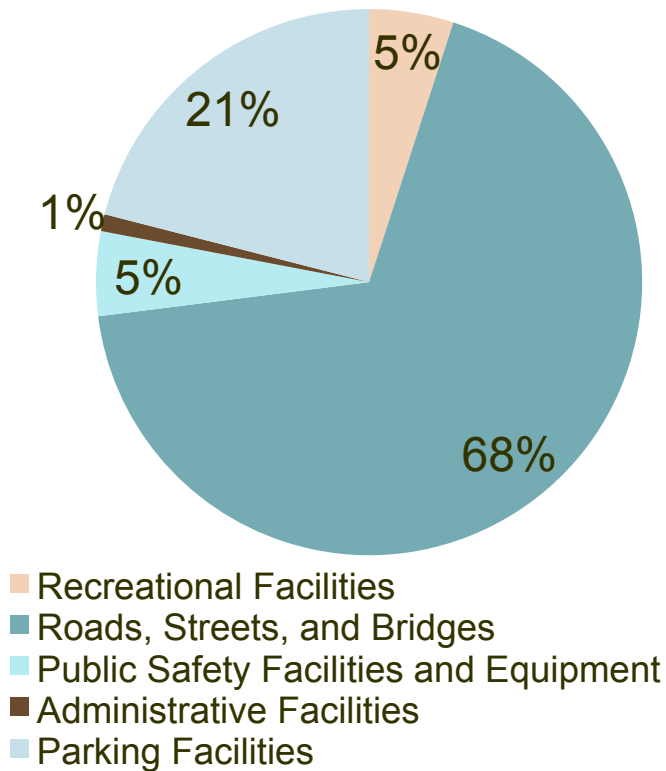
2009 SPLOST Program Budget



Total Program Budget	\$17,765,979
Recreational Facilities	\$5,585,642
Roads, Streets, and Bridges	\$6,921,218
Public Safety Facilities and Equipment	\$1,117,547
Parking Facilities	\$1,024,910
Water and Sewer Capital Improvements	<u>\$12,020</u>
Total Program Expenditures-to-date (83%)	\$14,661,337

Duluth

2014 SPLOST Program Budget



Total Program Budget	\$11,865,016
Recreational Facilities	\$0
Roads, Streets, and Bridges	\$491,567
Public Safety Facilities and Equipment	\$324,613
Administrative Facilities	\$0
Parking Facilities	\$100,017
Total Program Expenditures-to-date (8%)	\$916,197

SPLOST

Lawrenceville



SPLOST

Lawrenceville



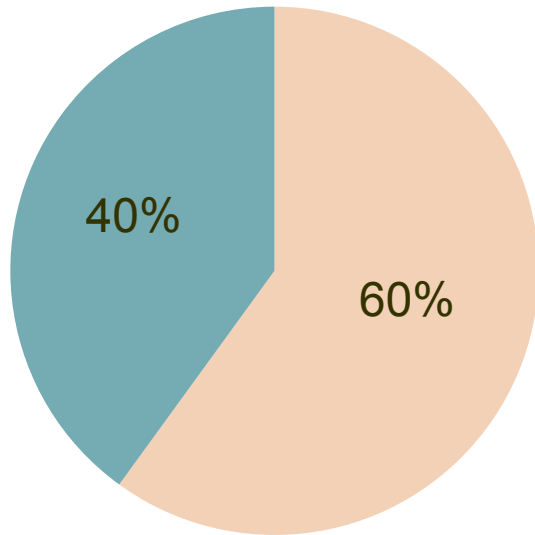
SPLOST

Lawrenceville



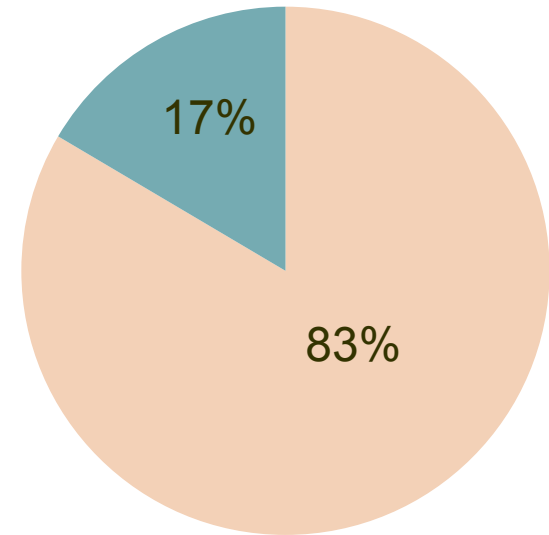
Berkeley Lake

2009 SPLOST Program Allocation



■ Roads, Streets, and Bridges
■ Administrative Facilities

2014 SPLOST Program Allocation



■ Roads, Streets, and Bridges
■ Administrative Facilities

SPLOST

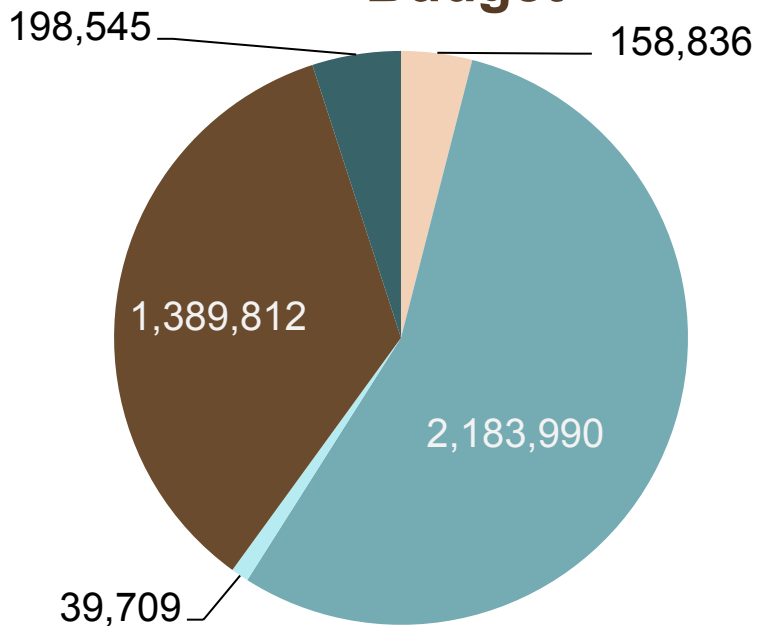
Berkeley Lake



Berkeley Lake Paving Project

Dacula

2009 SPLOST Program Budget

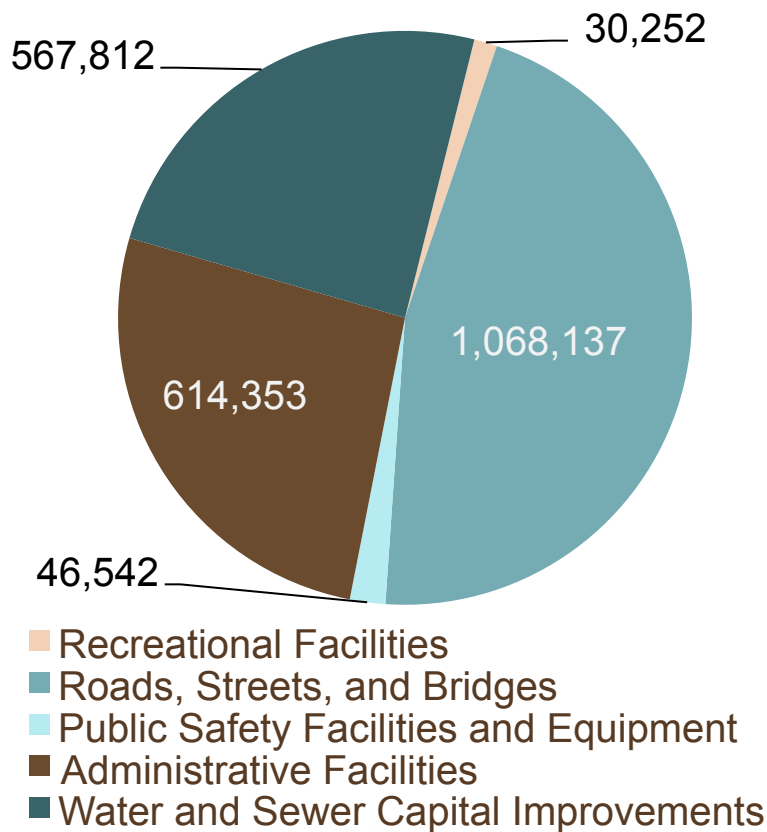


- Recreational Facilities
- Roads, Streets, and Bridges
- Public Safety Facilities and Equipment
- Administrative Facilities
- Water and Sewer Capital Improvements

Total Program Budget	\$3,970,892
Recreational Facilities	\$91,241
Roads, Streets, and Bridges	\$1,118,970
Public Safety Facilities and Equipment	\$39,709
Administrative Facilities	\$1,274,132
Water and Sewer Capital Improvements	\$198,545
Total Program Expenditures-to-date	\$2,722,597

Dacula

2014 SPLOST Program Budget



Total Program Budget	\$2,327,096
Recreational Facilities	\$1,520
Roads, Streets, and Bridges	\$0
Public Safety Facilities and Equipment	\$0
Administrative Facilities	\$384,521
Water and Sewer Capital Improvements	\$18,195
Total Program Expenditures-to-date	\$404,236

SPLOST

Dacula



City Hall Expansion - 2015

SPLOST

Dacula



New Sign Program at Olde Mill Park

SPLOST

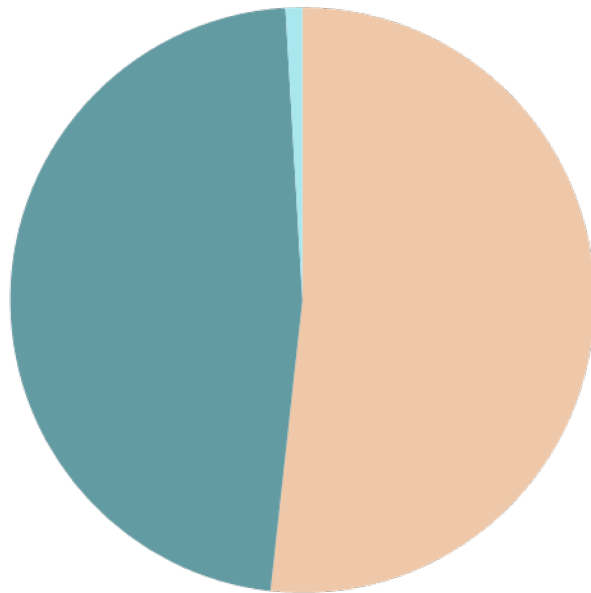
Dacula



Flintlock Subdivision Repaving – 2014, 2015

Sugar Hill

2005 SPLOST Program Budget

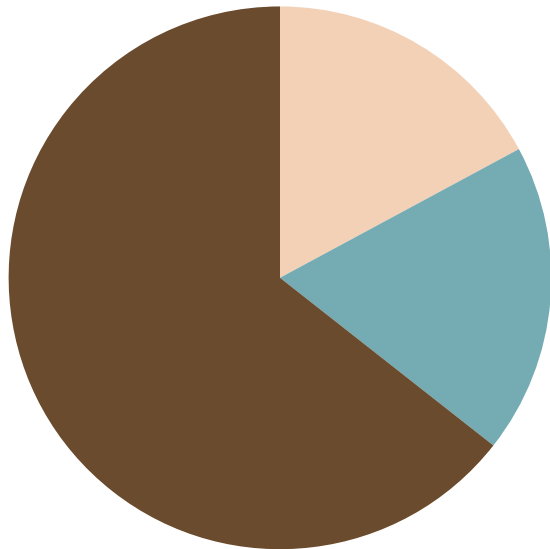


- Recreational Facilities
- Roads, Streets, and Bridges
- Public Safety Facilities and Equipment

Total Program Budget	\$8,843,652
Recreational Facilities	\$4,576,630
Roads, Streets, and Bridges	\$4,184,869
Public Safety Facilities and Equipment	\$ 82,153
Total Program Expenditures-to-date	\$8,843,652

Sugar Hill

2009 SPLOST Program Budget

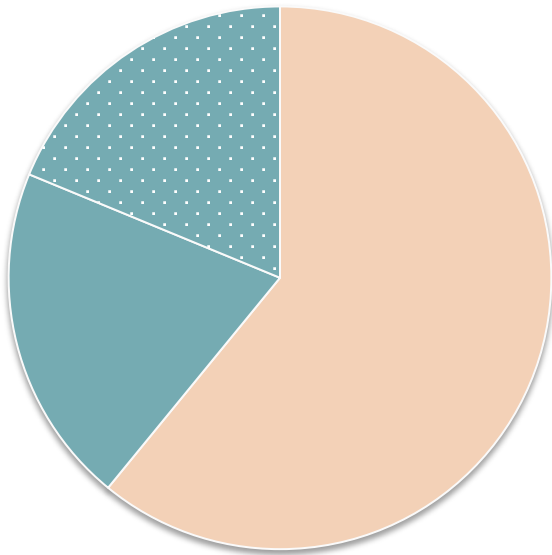


- Recreational Facilities
- Roads, Streets, and Bridges
- Administrative Facilities

Total Program Budget	\$9,142,470
Recreational Facilities	\$1,566,565
Roads, Streets, and Bridges	\$1,688,159
Administrative Facilities	\$5,887,746
Total Program Expenditures-to-date	\$9,142,470

Sugar Hill

2014 SPLOST Program Budget



- Recreational Facilities
- Roads, Streets, and Bridges
- Joint Transportation Projects

Total Program Budget	\$11,982,332
Recreational Facilities	\$7,299,492
Roads, Streets, and Bridges	\$2,433,164
Joint Transportation Projects	<u>\$2,249,676</u>
Total Program - (BUDGETED)	\$11,982,332

SPLOST

Sugar Hill



**Sugar Hill City Hall, Parking, Streetscape and Amphitheater
OPENED – JANUARY 2013**

SPLOST

Sugar Hill



**Sugar Hill Playground Pavilion at EE Robinson Park
OPENED – July 2014**

SPLOST

Sugar Hill



EpiCenter – Proposed Recreation Improvements 2015-2016

SPLOST

Sugar Hill



EpiCenter – Proposed Recreation Improvements 2015-2016

SPLOST

Sugar Hill



EpiCenter – Proposed Recreation Improvements 2015-2016



Traditional Look- Horizontal Banding
Inspired by Sidewalks Approaching City Hall



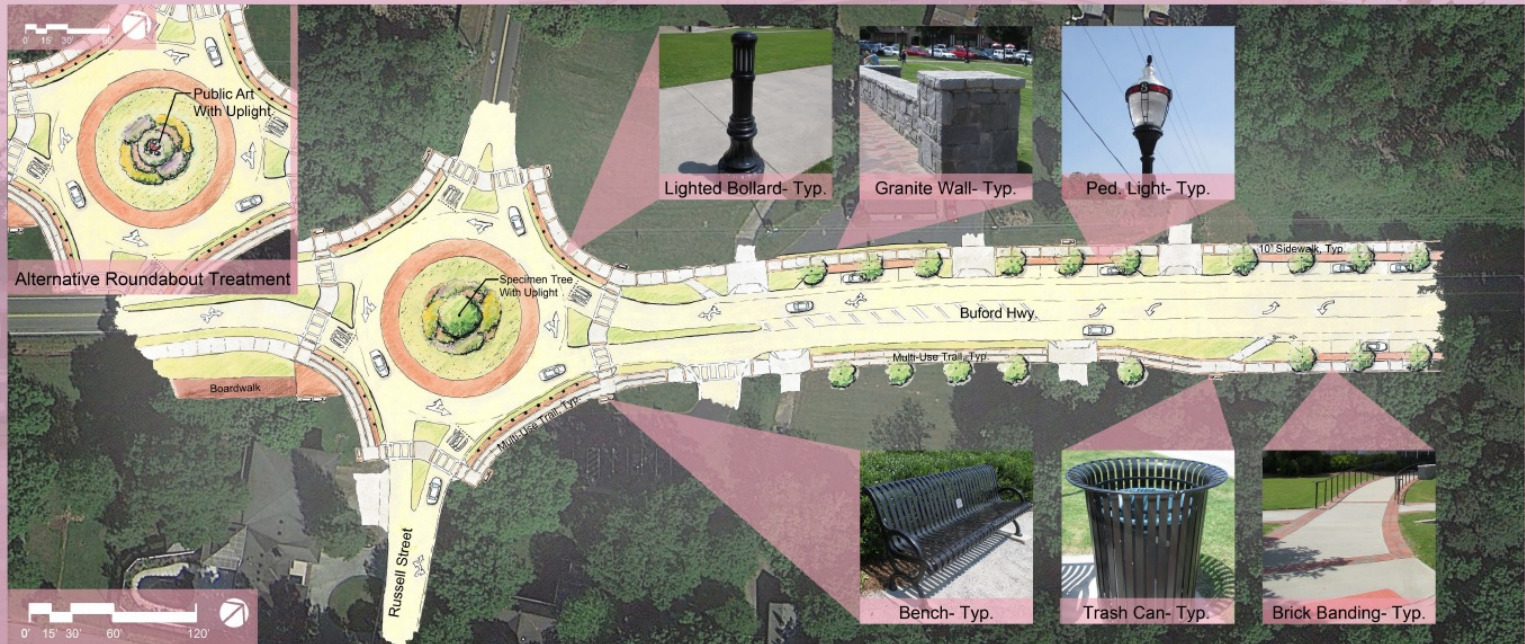
Multi-Use Trail



Buford Highway Hardscape Options

AECOM

March 26, 2015



SPLOST

Suwanee



Buford Highway Reconstruction

Suwanee

2005 SPLOST Program Budget

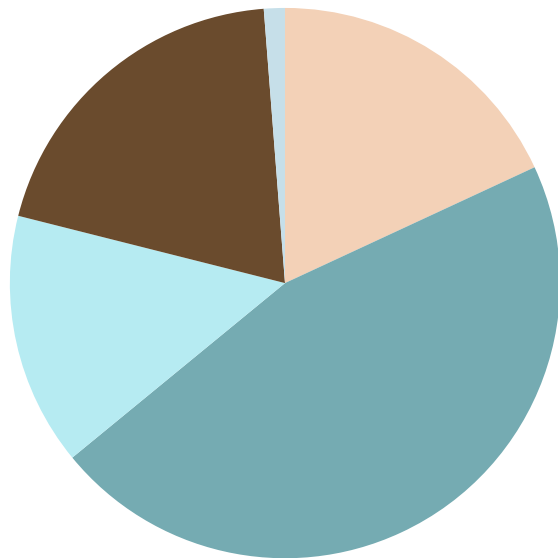


- Recreational Facilities
- Roads, Streets, and Bridges
- Public Safety Facilities and Equipment

Total Program Budget	\$7,220,853
Recreational Facilities	\$1,031,364
Roads, Streets, and Bridges	\$4,978,523
Public Safety Facilities and Equipment	\$1,158,067
Total Program Expenditures-to-date	\$7,167,954

Suwanee

2009 SPLOST Program Budget

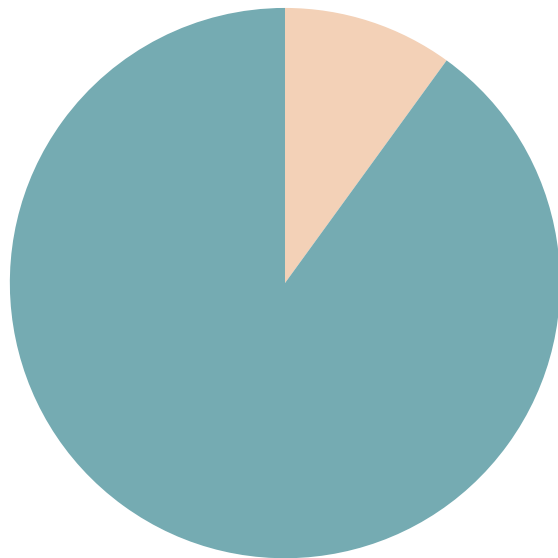


- Recreational Facilities
- Roads, Streets, and Bridges
- Public Safety Facilities and Equipment
- Parking Facilities
- Administrative Facilities

Total Program Budget	\$10,262,749
Recreational Facilities	\$1,112,078
Roads, Streets, and Bridges	\$1,777,957
Public Safety Facilities and Equipment	\$1,500,243
Parking Facilities	\$63,237
Administrative Facilities	\$ 126,475
Total Program Expenditures-to-date	\$4,579,990

Suwanee

2014 SPLOST Program Budget



■ Recreational Facilities

■ Roads, Streets, and Bridges

Total Program Budget	\$6,584,700
Recreational Facilities	
Roads, Streets, and Bridges	\$5,140
Total Program Expenditures-to-date	\$5,140

What has SPLOST Funded Summary



Roads



**Recreational
Facilities and
Greenspace**



**Public Safety
Facilities and
Equipment**



Libraries







**City
Projects**


SPLOST


Gwinnett County website www.gwinnettsplost.com

[Contact Us](#) | [A-Z Index](#) | [FAQ](#) | [Site Map](#) | [Login](#)

[ABOUT GWINNETT](#) | [SERVICES](#) | [DEPARTMENTS](#) | [CALENDAR](#) | [NEWS](#) | [EMPLOYMENT](#) | [TOP LINKS](#)

Sign up for our email newsletters!    

Departments > Board of Commissioners > SPLOST 



Special Purpose Local Option Sales Tax

Gwinnett voters have approved a series of Special Purpose Local Option Sales Tax programs, known as SPLOST, since the mid-1980s. This one percent sales tax has paid for County and city facilities, acres of greenspace, parks and recreation facilities, new roads and improvements, police and fire stations, and libraries around the county. Your pennies are working to keep Gwinnett a great place to live, work, and play!


Voters approve 2014 SPLOST


On November 5, 2013, Gwinnett County voters approved the renewal of the one-cent SPLOST sales tax. The three-year 2014 SPLOST program began on April 1, 2014, after the 2009 SPLOST program ended on March 31, 2014. It is projected to raise an estimated \$453 million for capital projects.


[County and city officials](#) in August 2013 [agreed to share](#) SPLOST proceeds (County - 78.9 percent, cities - 21.1 percent). The County is dedicating 70 percent of its share to transportation, including \$25 million for joint city/county projects. Public safety, parks, library relocation/renovation, and senior facilities will also get funds. To learn more about the planned uses, please read the [2014 SPLOST fact sheet](#).


To find out how residents are engaged in SPLOST planning and oversight, click on [citizen involvement](#). To go directly to the web page for the Citizens Project Selection Committee for Transportation, click on [Transportation CPSC](#).


Find Out Where Your Pennies Go


**SPLOST**
history &
overview


**SPLOST**
your pennies
for transportation


**SPLOST**
your pennies
for parks & greenspace

**SPLOST**
your pennies
for public safety & courts

**SPLOST**
your pennies
for libraries

**SPLOST**
your pennies
for city share

**SPLOST**
citizen
involvement

**E-SPLOST**
your pennies
for education