

NEWS & EVENTS

in District 1 with
Commissioner Carden

August 2022



Greetings!

It's back-to-school season, and we have plenty of ways to dive back in with events and activities.

Read more below for some opportunities to engage with our vibrant community.

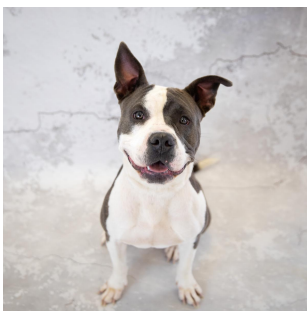
Happening Around Gwinnett

Board holds public hearings on proposed General Fund Millage Rate

The Gwinnett Board of Commissioners on Tuesday adopted the same general fund millage rate as last year, 6.95 mills. Prior to the vote, the Board held three public hearings and accepted comments through the County's website.

Most homeowners in Gwinnett benefit from the [Value Offset Exemption](#), which means they will not see an increase in the county government portion of their tax bill. Property taxes are based on millage rates set by county government, the schools, and cities. One mill equals a dollar tax per thousand dollars of assessed property value

You can take a closer look at details on the [2022 millage rates and additional information about how property taxes are calculated](#). Tuesday's action paved the way for the Tax Commissioner's Office to mail property tax bills in September. Payments will be due in November. Property owners or mortgage lenders can make payments by mail, online, in person, or by using one of the special drop boxes located at tax and tag offices across the county.



Find your new best friend and help us Clear the Shelter

On **Saturday, August 27**, we want to Clear the Shelter! Join us at the Bill Atkinson Animal Welfare Center from 11:00am to 4:00pm for a family-friendly adoption event. This nationwide celebration will include music, vendors, food, and kids' activities.

All adoption fees will be waived. All pets are spayed/neutered, given up-to-date vaccines and a microchip. Visit [GwinnettAnimalWelfare.com](#) to learn more.

Gwinnett and United Way prepare to allocate \$4.25 million in grant funds to local nonprofits

Local nonprofits that serve critical needs in the community will soon receive a boost as Gwinnett County and United Way of Greater Atlanta prepare to allocate \$4.25 million in Coronavirus Local Fiscal Recovery funds to nonprofit service providers. These funds — provided to Gwinnett County by the U.S. Department of

the Treasury through the American Rescue Plan Act will be used to address needs identified or worsened by the COVID-19 pandemic and its economic impact. United Way of Greater Atlanta is offering digital listening surveys, where [nonprofits](#), [residents](#), and [community organizations](#) are invited to share their needs and challenges as Gwinnett County recovers from the COVID-19 pandemic. The feedback from these listening surveys will be used to prioritize needs and prepare for the distribution of funding. **Local nonprofits can apply for funding now through August 26** using [United Way's Grant Portal](#).



Dial 988 for mental health crisis services

People seeking mental health services can now call 988 to access counselors and response teams at the 24/7 National Suicide Prevention Lifeline.

Callers will be redirected from the current number, 1.800.273.8255, which will stay operational during and after the 988 expansion. The new number will make it easier for individuals to get access to the help they need by providing an easy-to-remember three-digit

number for mental health crises. To learn more about the crisis hotline, visit 988LifeLine.org.

What's New in District 1

Board adopts Equitable Redevelopment Plan for Gwinnett Place Mall

The Gwinnett County Board of Commissioners adopted the final [Equitable Redevelopment Plan](#) for Gwinnett Place Mall. The plan was informed by eight months of community engagement with direct input from more than 2,000 Gwinnett residents and focuses on a new model for equitable development to benefit historically marginalized communities.



The Board's intent with the site is to revitalize the mall as a location where local residents, small businesses and visitors can thrive. We sought to achieve this vision by involving the surrounding community, so they could be with us in the decision-making process from the start. As the Commissioner who represents Gwinnett Place Mall, I have always been focused on ensuring this area can remain the economic heart of Gwinnett County, and that the redevelopment that the County supports in this area is beneficial to those who live and work there.



County seeking input on hazard mitigation efforts

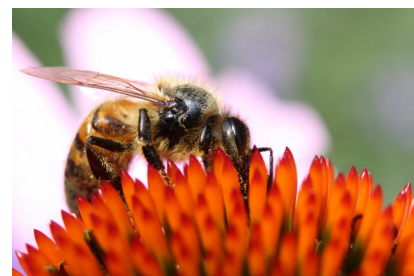
Gwinnett Emergency Management invites residents to share input about the impact hazards and disasters have on their lives, property, and the environment. Feedback from the community will be used to update the County's Hazard Mitigation Plan. Gwinnett's Hazard Mitigation Plan identifies natural hazards and vulnerabilities, assesses risk, and lays out ways to minimize loss of life and property due to hazards and disasters. Complete the brief survey at GwinnettCounty.com/HazardMitigationSurvey.

"Bee" a citizen scientist

Drop in and "bee" a citizen scientist! Learn about the importance of pollinators and take part in the statewide pollinator count.

On Friday, August 19 and Saturday, August 20:

1. Select a blooming pollinator plant with insect activity.
2. For 15 minutes, count each time an insect pollinator touches a bloom, even if they fly away and return.
3. Upload your counts at GGAPC.org.



Your contributions help us understand and advance pollinator health across the state.

Water Resources launches a bilingual 24/7 Virtual Assistant

The Department of Water Resources has launched an enhanced virtual assistant billing and support system for customers. Water Resources virtual assistant uses smart technology to assist residents with bill payments, account management, service assistance, and more. The virtual assistant is available 24 hours a day, 7 days a week, in English and Spanish, and saves customers time by eliminating the need to wait for an available representative. For more information about Water Resources Virtual Assistance,

Special Events and Happenings

Visit GwinnettCountyEvents.com or follow the County's social media channels to learn about more upcoming events.

Engage in Aging

Friday, August 12 from 8:00am to 1:00pm

Health and Human Services is pleased to bring you our 2022 Engage in Aging event, Age My Way. Engage in Aging aims to help Gwinnett County residents ages 50 and up, senior caregivers, and aging services professionals connect with various local agencies. Participate in a resource fair, interact with activity demos, and eat lunch. Contact SeniorServices@GwinnettCounty.com for additional information. Free. George Pierce Park, 55 Buford Highway, Suwanee.

Food Distribution

Tuesday, August 16 at 4:00pm until supplies last

Free! Come pick up fresh and self-stable foods at Gwinnett Community Services' Food Distribution event. No identification is required, and distribution will be drive-thru and contactless. For additional information, contact VolunteerGwinnett@GwinnettCounty.com. Gwinnett Place Mall, 2100 Pleasant Hill Road, Duluth.

Game Night for Grownups

Friday, August 26 at 7:00pm to 10:00pm

Friends, card games, snacks, and more! Come ready for Rummy, Spades, Taboo, Five Second Rule and other games. Must [register](#) by August 22. Ages 18 and up. Fee: \$10 per person. Shorty Howell Park Activity Building, 2750 Pleasant Hill Road, Duluth.

Kirkland D. Carden, District 1 Commissioner
Gwinnett County

Kirkland.Carden@GwinnettCounty.com