

NEWS & EVENTS

in District 2 with Commissioner Ben Ku

Follow us on social media!



December 2021



Hello!

Happy holidays! Are you ready for 2022? With a new variant, please continue to be responsible and take good care of yourself and those around you. Stay home when you're sick, and please get vaccinated and boosted.

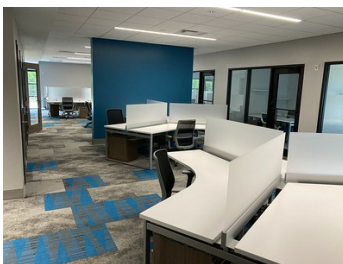
Remember, if you'd like to chat with me on any topic, you can reach out to my office at Ben.Ku@GwinnettCounty.com to schedule a call or virtual meeting. I want to know if you feel that I have been representing you well or if you think there is something I could be doing to better represent you.

Happening Around Gwinnett

Share your thoughts on the 2022 proposed budget

Chairwoman Hendrickson's proposed budget for 2022 totals \$2.06 billion, up 7.8 percent from the 2021 adopted budget. It consists of a \$1.6 billion operating budget and a \$454 million capital improvements budget, which includes funds from the County's voter-approved SPLOST program. Two-thirds of the operating budget, which funds everyday expenses such as employee salaries, benefits, equipment, and repairs, is dedicated to the areas of public safety and public works. The capital budget will pay for new libraries, roads, and parks.

[Read more about the proposed budget](#) and [share your comments online](#) by December 31.



County officials cut ribbon on Gwinnett Entrepreneur Center

County leaders gathered with partners from Georgia Gwinnett College to cut the ribbon on the Gwinnett Entrepreneur Center. The center, located in downtown Lawrenceville, offers resources, coaching, and workspace to small business owners and innovators looking to get their businesses up and running. The inaugural group of members has been selected and will move into the center in January. Learn more about the center at GwinnettEntrepreneurCenter.com.

Learn about the redistricting process

Under a decades old law, political boundaries must be drawn every decade to match a county's changing population. My fellow commissioners and I are hosting a series of open houses to inform residents about the process and details of redistricting for the Gwinnett County commission districts. View maps, ask staff questions, and share your feedback. My open house was held last month. The next sessions are:

- **Monday, December 20** at 6:30pm at the Dacula Park Activity Building with Commissioner Watkins
- **Thursday, January 13** at 6:00pm at Bogan Park in Buford with Commissioner Fosque



Unclog the FOG this holiday season

Rich holiday foods are sources of [fats, oils, and grease](#), and they can have serious effects on the County's sewer system if poured down the kitchen sink. As FOG builds up in sewer pipes, wastewater has a harder time flowing through the pipes. Eventually, the flow can back up until the sewage spills into a nearby stream, your street, your yard, or even out of your toilet. Pouring grease or food scraps down the drain (even if you have a garbage disposal) sends FOG into the sewer system where every little bit adds up and can create major clogs. Let fats, oil, and grease solidify and place them in your trash. Don't pour them down the drain.

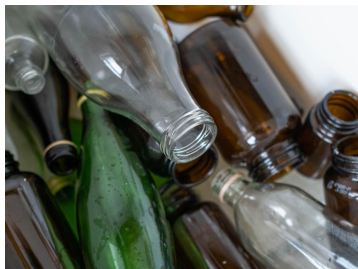
What's New in District 2

Thank you for helping us Finish Strong Together

Last weekend, we distributed almost 5,000 gift cards to people who got vaccinated as part of the communitywide Finish Strong Together vaccination event. People from around the county lined up to get their first dose, second dose, or booster and earned \$100. Thank you to everyone who got vaccinated as part of this event, and especially to those who got their vaccine even after gift cards ran out. With your help, we'll finish this year strong and head into 2022 with optimism and hope for a healthier new year.



**Finish Strong
TOGETHER**



Glass recycling pilot expands to second location

You can now recycle glass at another location in Gwinnett — Pinckneyville Park. This is the second drop-off glass recycling location that the County will offer through our pilot program. The first site, located in the parking lot of OneStop Norcross at 5030 Georgia Belle Court in Norcross, opened in October and has already diverted 4.2 tons of mixed glass from landfills.

Drop off clean, empty glass containers at Pinckneyville Park, located at 4758 South Old Peachtree Road in Peachtree Corners. The clearly marked drop-off container is located by the baseball complex and is accessible 24 hours a day, seven days a week. Frequently asked questions about glass recycling can be found on GwinnettCB.org/Glass-Recycling. When we launched the first drop off, you responded with enthusiasm and let us know you wanted this program to expand. With this second location, we can provide more opportunities for sustainability in Gwinnett.

County opens warming stations during coldest nights

Gwinnett County will open warming stations for residents to receive temporary, overnight relief from frigid temperatures on evenings when temperatures drop to 35 degrees or below. When activated, the warming stations will be available from 6:00pm until 7:00am. Residents who visit the sites will be able to warm up, eat a meal, and get some rest. For a list of locations, activation status, and more, visit GwinnettOneStop.com.



Apply for a seat on the Tree Advisory Committee

I'm searching for someone to serve as the district 2 representative on the Tree Advisory Committee. The Tree Advisory Committee advises the Board of Commissioners and the Department of Planning and Development about issues related to the preservation and replacement of trees. It also reviews and recommends changes to and provides educational programs about the County's tree preservation and replacement program as contained in the Unified Development Ordinance. Interested in applying? Fill out [this application](#) by **January 11**. The board will vote on the appointment on January 18.

Special Events and Happenings

Visit GwinnettCountyEvents.com or follow the County's social media channels to learn more about upcoming events.

Winter Woodland Walk

Thursday, December 30 from 10:00am to 11:30am

Hike with us! Join fellow hikers and a nature educator for a Winter Woodland Walk. Hikers of all ages will get the opportunity to see trees through a new lens, peeling back the secrets of how our native trees adapt to Georgia winter conditions. [Register](#) for this free guided hike. Simpsonwood Park, 4511 Jones Bridge Circle, Peachtree Corners.

Junior Create

Thursday, January 13 from 10:00am to 11:30am

Let your little one explore their creative side with our monthly events geared just for their little hands. Fee: \$4. Ages 2 to 7. All supplies are provided; please [register in advance](#) online or by phone. Pinckneyville Park, 4758 South Old Peachtree Road, Norcross.

Therapeutic Recreation: Craft Tuesday

Tuesday, January 18 from 12:30pm to 2:00pm

Let's create! Each month we will have a themed, hands-on art project at this therapeutic and adaptive crafting program specifically designed for people with varying abilities. Fee: \$12. Ages 12 and up. Please [register](#) in advance. Lilburn Activity Building, 788 Hillcrest Road, Lilburn.

Wild West BBQ and Hoedown

Friday, January 21 from 11:30am to 1:00pm

Swing your partner and do-si-do! Enjoy a tasty barbecue meal, entertainment, and an opportunity to join some square dance fun. Fee: \$11. Ages 50 and up. [Register](#) in advance. Bethesda Park Senior Center, 225 Bethesda Church Road, Lawrenceville.

Ben Ku, District 2 Commissioner
Gwinnett County

Ben.Ku@GwinnettCounty.com