



Follow us on social media!

February 2024



Greetings!

February brings a lot of reasons to celebrate! Happy Black History Month, Lunar New Year, and Valentine's Day to everyone! February is also the perfect time to get involved in civic engagement. Advanced voting begins this month, and you can also take advantage of the opportunity to learn more about your local government through the Gwinnett 101 Citizens Academy.

To get more information about the important dates and timelines for upcoming elections and the application deadline for the Gwinnett 101 Citizens Academy, check out the rest of the newsletter.

### Join us for our March town halls

Next month, I'll join District 1 Commissioner Kirkland Carden and District 3 Commissioner Jasper Watkins III to speak with you about our district accomplishments and discuss the Board of Commissioners' intent to call for a transit referendum.

See below the dates, times, and locations:

I'll join Commissioner Watkins on **Monday, March 18 from 6:00pm to 8:00pm** at the Gwinnett Justice and Administration Center in Lawrenceville. Later in the week, I'll join Commissioner Carden on **Thursday, March 21 from 6:00pm to 8:00pm** at Suwanee City Hall. I hope to see you there!

Both town halls will stream live on the [County's Facebook page](#).

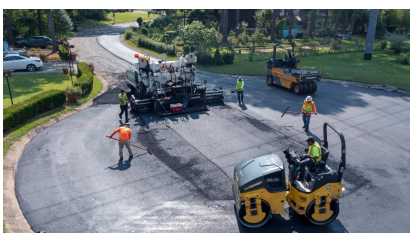
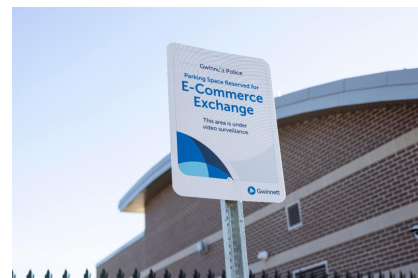


### Happening Around Gwinnett

#### New e-commerce spaces now available at Gwinnett Police

The Gwinnett Police Department now offers designated parking spots at each precinct and headquarters for e-commerce transactions. These spots are marked with signs and monitored by video surveillance 24 hours a day, 7 seven days a week. Remember, it's important to stay safe when buying and selling online, so always follow [best practices](#).

[Find Gwinnett Police headquarters and precinct locations near you for safe transactions.](#)



#### Georgia DOT grant funds road resurfacing

The Gwinnett Board of Commissioners approved another Local Maintenance Improvement Grant application. This grant will fund the resurfacing of more than 35 miles of roadways in Gwinnett County. The Georgia Department of Transportation will contribute \$7.6 million with a local match of \$2.3 million from the 2017 SPLOST Program.

To learn more about how your pennies work in Gwinnett, visit [GwinnettSPLOST.com](http://GwinnettSPLOST.com).

### Apply for the Gwinnett 101 Citizens Academy

Get a behind-the-scenes look on how Gwinnett County Government operates by enrolling in the Gwinnett 101 Citizens Academy! During this 12-week program, participants will get an in-depth look at County operations, meet local leaders, and tour County facilities. The academy is held twice a year and aims to develop and nurture informed and engaged residents, students, and business owners in Gwinnett County.

To be considered for the spring term, apply at [Gwinnett101.com](http://Gwinnett101.com) by **Friday, March 1**.



### Become a lifeguard

Looking for a rewarding job opportunity this summer? Become an American Red Cross-certified lifeguard for Gwinnett County's award-winning park system. Enjoy flexible hours in a fun team environment with ample growth opportunities while learning lifesaving skills and boosting your fitness level. Pay starts at \$17.32 per hour, and training is free. Part-time and seasonal positions are available at our five year-round aquatic centers and four seasonal pools. Learn more at [GwinnettCounty.com/Lifeguard](http://GwinnettCounty.com/Lifeguard).

## What's New in District 4

### Advance voting starts on February 19

Voters are not limited to Election Day to cast their ballot for the **March 12** Presidential Preference Primary. Registered voters can vote advance in person every day, including weekends, through **March 8 from 7:00am to 7:00pm** at [the Gwinnett Voter Registrations and Elections Office in Lawrenceville and nine advance voting locations around the county](#).



Voting by mail is another option available for voters. You can request an absentee by mail ballot for the March 12 election now through Friday, March 1. Please complete the absentee ballot application form online or call the Voter Registrations and Elections Office at 678.226.7210 to request an application. To check the status of your voter registration, see a sample ballot, and find your polling location, visit the [Secretary of State's My Voter Page](#).

### Votación adelantada empieza el 19 de Febrero

Los votantes no están limitados al día de las elecciones para emitir su voto para las Primarias de Preferencia Presidencial del **12 de Marzo**. Los votantes inscritos pueden votar por adelantado en persona todos los días, incluidos los fines de semana, hasta el **8 de Marzo de 7:00am a 7:00pm** en la [Oficina de Inscripción de Votantes y Elecciones de Gwinnett en Lawrenceville y en nueve lugares de votación adelantada en todo el condado](#).

La votación por correo es otra opción disponible para los votantes. Puede solicitar una boleta de voto ausente por correo para las elecciones del 12 de Marzo desde ahora hasta el Viernes 1 de Marzo. Complete el formulario de solicitud de boleta de voto ausente en línea o llame a la Oficina de Inscripción de Votantes y Elecciones de Gwinnett al 678.226.7210 para solicitar una aplicación.

Para verificar el estado de su inscripción de votante, ver una boleta de muestra y encontrar su lugar de votación, visita [Mi página de Votante de la Secretaría de Estado](#)



### Apply for a homestead exemption by April 1

Reduce your property tax bill by applying for a homestead exemption! Owners who occupied their home as their primary residence as of January 1 may qualify for an exemption this year. If you already have an exemption in place, you do not need to reapply. For more information and to apply, visit [GwinnettTaxCommissioner.com/Apply](http://GwinnettTaxCommissioner.com/Apply).

Visit [GwinnettCountyEvents.com](https://www.gwinnettcountryevents.com) or follow the County's social media channels to learn about more upcoming events.

### **Cookies & Canvases**

**Thursday, February 22 from 1:00pm to 3:30pm**

Get artsy in this instructor-led paint party with sweet treats and a masterpiece to take home [Register online](#). Ages 50 and up. Fee: \$18.00 Gwinnett Resident and \$35.00 Non-Gwinnett Resident. Bethesda Park Senior Center, 225 Bethesda Church Road, Lawrenceville.

### **STEAM Saturday**

**Saturday, February 24 from 10:00am to 3:00pm**

Free! Challenge your student's imagination and creativity in our hands-on STEAM Lab. Students will participate in engaging learning activities that explore science, technology, engineering, art, and math. [Register online](#). Ages 5 - 10. Gwinnett Environmental & Heritage Center, 2020 Clean Water Dr, Buford.

### **Waltz Workshop**

**Monday, February 26 from 7:00pm to 8:30pm**

Experience the joy of waltzing in this free-spirited class! No experience or partner required. [Register online](#). Ages 18 and up. Fee: \$11. Gwinnett Historic Courthouse, 185 Crogan Street, Lawrenceville.



Matthew Holtkamp, District 4 Commissioner  
Gwinnett County

[Matthew.Holtkamp@GwinnettCounty.com](mailto:Matthew.Holtkamp@GwinnettCounty.com)