

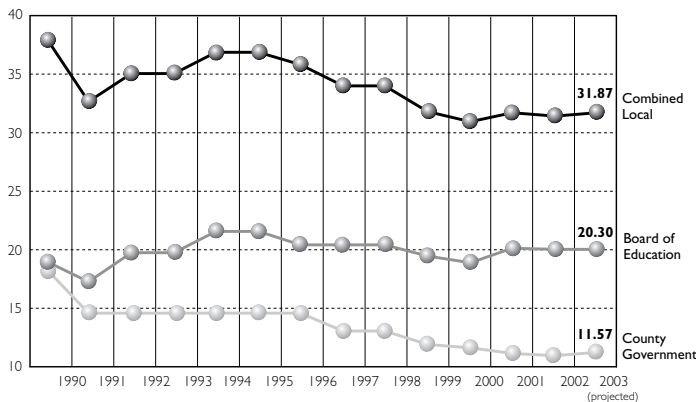


localeconomy

Gwinnett County's strong employment base, outstanding parks, ambitious greenspace preservation program, and excellent public safety services are just a few indications that success lives here.

- The county's population now stands at an estimated 654,000 residents, up more than 50,000 from the 2000 Census Bureau count of 596,532. (Source: ARC and Gwinnett County Planning and Development)
- Gwinnett added 7,367 new jobs from 2000 to 2001. According to the Georgia Department of Labor, Gwinnett had approximately 289,426 employment positions (1st quarter 2002 monthly average – latest figure available)
- Unemployment in the county is 4.5%, slightly below the Georgia rate of 4.8%. (Source: Georgia Department of Labor – September 2002, preliminary numbers)
- The Tax Digest continues to grow even during this current economic downturn with the real property net tax digest and the personal property tax digest projected to grow 6.7% and 5% respectively during 2003.
- The County has rolled back the millage rate with the passage of the last two SPLOST programs a total of 2 mills. These reductions remain in effect and when combined with rollbacks to offset property value updates, the County has reduced the millage rate a total of 3.63 mills since 1996 – almost 25% of the total county millage.
- The voter-approved \$75 million general obligation bond for the jail expansion project will increase the millage approximately .25 mills in 2003 – a \$20 increase to the tax bill on a \$200,000 home.

History of Millage Rates 1990 – 2003

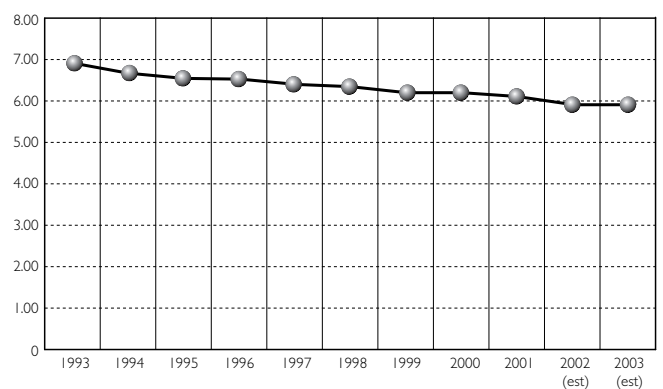


countyfinances

Gwinnett has maintained a AAA rating from major credit rating agencies Moody's, Fitch, and Standard & Poor's since 1997. Gwinnett is one of only 20 counties in the U.S. to earn the AAA designation from all three agencies. The favorable credit rating results in significant interest savings for Gwinnett County citizens.

- The 2003 budget proposal totals \$1.4 billion
- The \$635 million Operating Budget includes:
 - Adding 187 new positions (compared to 55 added in 2002)
 - 113 dedicated to public safety and courts (over 60%)
 - 74 positions for Public Utilities and General Government
- The long term Capital Improvement Program includes (total project cost including prior years):
 - \$1.6 billion in water and sewer projects
 - \$1.0 billion in transportation projects
 - \$233 million for public safety capital projects including the voter-approved \$75 million jail expansion
 - \$351 million for community services such as greenspace/park land acquisition and development of public parks, libraries, and social service delivery centers
 - Approximately \$218 million for general government-related projects including:
 - Mall of Georgia Tag Office
 - New Recorders Court and Juvenile Court facility

Ratio of Authorized Positions Per 1,000 Population

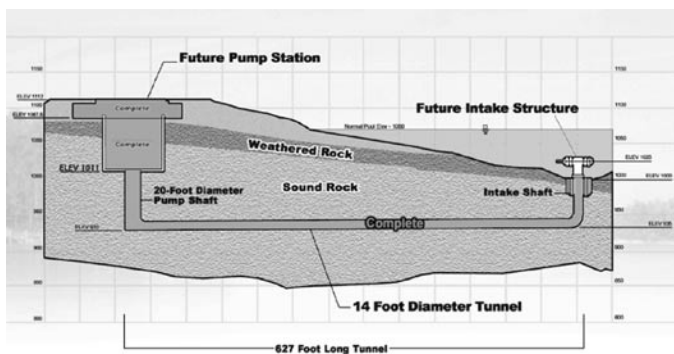


Note: Employees is number of authorized positions for each fiscal year. Population is U.S. Census official numbers or Gwinnett County estimate for 2002 and 2003.

planning and development

- The Board of Commissioners approved a mixed-use development overlay district in October 2002 that permits the mixing of commercial, office, and residential uses in a single zoning district. It is intended for use as a revitalization tool in areas experiencing decline. The regulations require the set-aside of 20% of the property in common areas.
- The Growth Issues Steering Committee completed a three-year assessment of growth issues and submitted a report detailing its recommendations to the Board of Commissioners.
- The Revitalization Task Force completed its review of declining commercial centers and residential neighborhoods. The Committee made numerous recommendations, including the establishment of pilot projects where new programs aimed at reversing urban decline can be tried and evaluated.

public utilities



Shoal Creek Water Intake

- The F. Wayne Hill Water Resources Center continues to receive regional, national, and international acclaim and is now considered to be the best water reclamation facility in the Southeast, and one of the very best in the nation.
- The nine water reclamation plants and one drinking water plant completed the year with a perfect record of permit compliance and several won national awards for excellence.
- A 200% expansion of the F. Wayne Hill Water Resources Center and construction on the new Shoal Creek Water Filtration Plant are under way. Many new water lines, sewer lines, and pumping stations are also under construction. Capital improvements totaling \$275 million are scheduled for 2003.
- The reclaimed water system is in operation. The system provides water to the Bear's Best Golf Course and to Post Properties Apartments. Other contracts are approaching finalization.

- An administrative law judge ruled in favor of Gwinnett County in the legal challenge to the permit to return reclaimed water to Lake Lanier.

transportation

- Ridership of the Gwinnett County Transit System's Express Routes totalled 298,062 for 2002.
- The County received 36 local Compressed Natural Gas (CNG) buses, seven suburban CNG buses, and eight paratransit vans.
- Two local bus and paratransit routes started up in November 2002. The buses providing service between the Doraville MARTA station and Lawrenceville. Three additional routes will begin in early 2003.



Gwinnett County Transit System

- Gwinnett County received four first-place awards from the American Public Transportation Association for marketing efforts in the start-up of Express Bus Service.
- Gwinnett County continues to make road improvements and construct new roads to handle the ever-growing population. The 1992, 1997, and 2001 sales tax programs are funding the transportation capital improvement program.
- Several intersection improvements opened to traffic:
 - Jimmy Carter Boulevard at Buford Highway
 - Jimmy Carter Boulevard at Dawson Boulevard/Live Oak Parkway
 - Steve Reynolds Boulevard at Beaver Run Road
 - SR 316 at Winder Highway
- Requests for proposals for an I-85 Corridor Transportation Study were issued in September 2002.



Pinckneyville Community Center

communityservices

- The Centerville Community Center opened its doors in July 2002. Since then, more than 7,000 residents have participated in programs at the center.
- Volunteers delivered 50,000 meals to homebound senior citizens.
- To protect Gwinnett's water quality, the Gwinnett County Cooperative Extension Service presented training to more than 700 professional landscapers on the safe and proper use of fertilizers and pesticides.
- The new Centerville Branch Library opened in July 2002. This is the County's 11th full-service branch library.
- Design work began on the new Suwanee Branch library. This is the first library funded through the 2001 SPLOST.
- The acquisition of park land continued to be a high priority. The County purchased over 2,100 acres of land in 2002. The largest land tracts (almost 1,800 acres) were acquired in the Harbins area.
- The Board of Commissioners adopted the Gwinnett County Open Space and Greenways Master Plan in May 2002.
- New parks and recreation facilities opened in 2002 include:
 - Best Friend Park, gymnasium renovation
 - Rabbit Hill Park, soccer complex
 - Mountain Park Park, major renovation project
 - Pinckneyville Park, new community center
 - Tribble Mill Park, park improvements
 - Rhodes Jordan Park, outdoor family aquatics center

- Construction began on three new parks and facilities in 2002:
 - Mountain Park Aquatics Center and Activity Building
 - Bay Creek Park
 - Little Mulberry Park



Mountain Park Aquatics Center

- The Gwinnett Senior Center at Bethesda Park celebrated its 10-year anniversary in September 2002.
- A unique partnership between Gwinnett County, the Grayson Community, and a coalition of Rotary Clubs kicked off a fund-raising effort for a special needs playground at Bay Creek Park. The County is also building a special needs ball field at the park.
- Several Gwinnett County cities completed park projects, including park land acquisition, with funds provided by the County's 2001 SPLOST program for parks and recreation.

publicsafety

Corrections

- The new 800-bed Comprehensive Correctional Complex opened in September 2002 and is the largest county-owned and operated correctional facility in Georgia. Of the \$21.6 million project, \$3.2 million was funded by a grant from the Georgia Department of Corrections in return for housing additional state inmates.

Fire

- Construction on the relocation of Fire Station 5 in Duluth and the new Fire Station 25 on Ronald Reagan Parkway and Highway 29 began in October 2002. Both stations have a scheduled completion date of October 2003.

- Bids are being solicited for the construction of a new Fire Administration Building.
- Design work has been completed for Fire Station 24 in the Mall of Georgia area.

Police

- Graduated three Police Academies, one Sheriff's Basic Mandate Academy, three Basic Communications Officers classes, and two Citizens' Police Academies.
- The new Central Precinct on Satellite Boulevard opened in March 2002. The Central Precinct staff and Crime Prevention Unit staff both use the new building.
- Acquired 50 acres for the Training Complex, funded by the 1997 Sales Tax Program. The 2001 Sales Tax Program will fund construction of this 25,000-square-foot facility, which will also house a driving course and a firing range.
- Acquired 10.1 acres for a new Animal Control Facility. Funding for the design of this facility is from the 2001 Sales Tax Program.
- Added 18 new communities to the Crime Prevention Neighborhood Watch Program. There are a total of 150 communities currently in the program.
- Won re-accreditation from the Commission on Accreditation by Law Enforcement Agencies, Inc.



Gwinnett County Comprehensive Correctional Complex

othermajorissues

- 2001 Special Purpose Local Option Sales Tax program continues through March 31, 2005.
 - \$192 million for Parks and Recreation
 - \$192 million for Transportation
 - \$11 million for Library system
 - \$54 million for Public Safety

- Gwinnett Civic and Cultural Center Expansion – A new 21,600-square-foot ballroom opened in the fall of 2002 and a new 11,600-seat arena will open in February 2003.



Gwinnett Civic and Cultural Center

- Gwinnett County Environmental Education Center and Heritage Center – This fall, the County announced a very exciting partnership with the University of Georgia and Gwinnett County Board of Education for the development of the Gwinnett County Environmental and Heritage Center. To be located at the F. Wayne Hill Water Resource Center, this facility will provide educational and recreational opportunities for all Gwinnett County residents.
- Board of Education/Board of Commissioners Task Force – This committee began meeting in 2002 and is looking at additional ways to improve cooperation and create efficiencies between the Board of Education and Board of Commissioners.

Communications

- The County launched a new Web site in 2002 to communicate more effectively with the citizens of Gwinnett. Additional enhancements will be pursued in 2003.

Water Supply, Water Quality

- Continue watershed protection efforts.
- Involvement in North Georgia Water Planning District. The planning district is working on three sets of regional and watershed-specific plans: stormwater runoff management, wastewater management, and water supply and conservation.

Air Quality

- The County is committed to working with GRTA, ARC, and Georgia's Department of Natural Resources to address air quality.
- Gwinnett County participated in the Georgia Clean Air Campaign and reduced single occupancy vehicle trips by 24% during the May to September 2002 smog season.