



Gwinnett County Government
Communications Division
NEWS RELEASE

Heather Sawyer
Deputy Communications Director
Office: 770.822.7035
Fax: 770.822.7189
www.gwinnettcounty.com

Story contact: Alan Chapman, Director
Department of Transportation
770.822.7417
alan.chapman@gwinnettcounty.com

**COMMISSIONERS APPROVE CONSTRUCTION OF NEW BRIDGE
AND PEDESTRIAN IMPROVEMENTS ALONG NEW HOPE ROAD**

(Lawrenceville, Ga., Feb. 16, 2018) – The Gwinnett Board of Commissioners on Tuesday, Feb. 6 awarded the contract to build a new bridge over the Alcovy River and the installation of a multi-use path along New Hope Road.

The Board awarded the project to CMES Inc. at an amount not to exceed \$6,041,798.

Contractors will replace the existing bridge and improve the alignment of New Hope Road at the approaches to the bridge as well. The new structure also will provide more clearance between the river and bridge deck to help address flooding issues in the area. The multi-use path will extend from Callie Still Road to Alcovy River Drive.

Curb and gutter and other drainage improvements also will be installed as part of these projects, which stretch for about 1.6 miles.

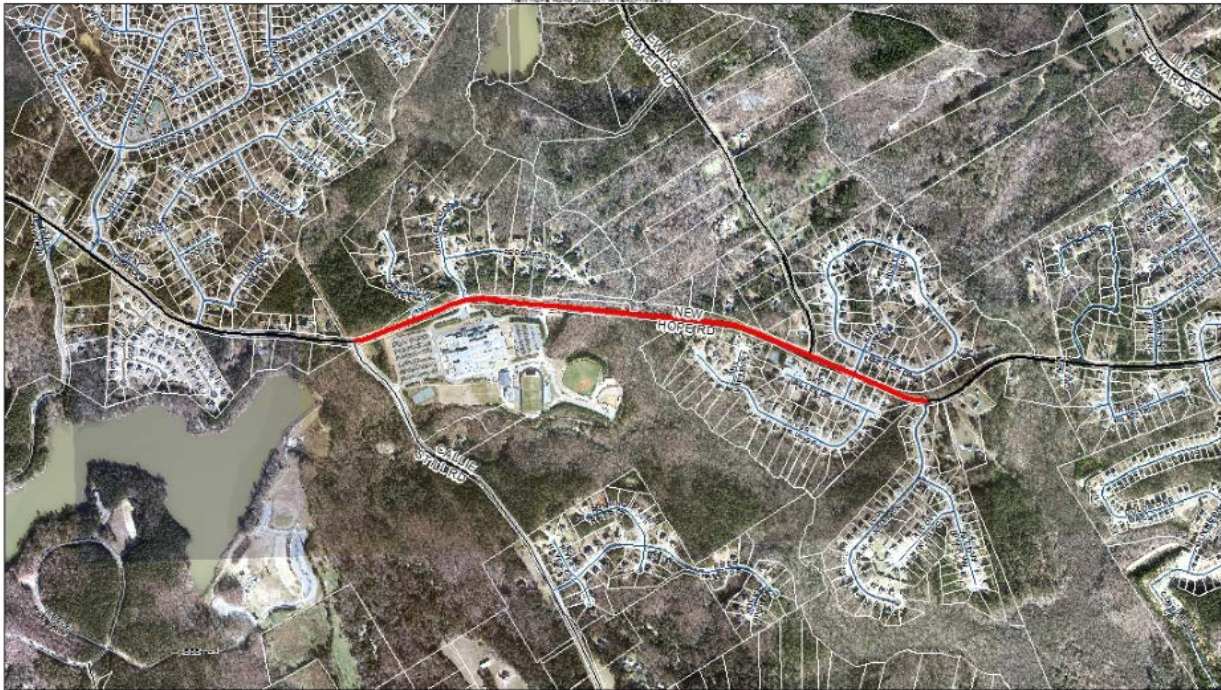
CMES was the lowest of four responsive bidders on the group of projects, which is funded by the 2009 and 2014 SPLOST programs.

For additional information on Gwinnett County Transportation projects, please visit www.gwinnettcounty.com.

###

Note: A project map is attached for reference.

NEW HOPE ROAD (CALLIE STILL TO GRACEBROOK DRIVE) (19401)
 NEW HOPE ROAD (ALCOVY RIVER DRIVE TO JUDY WALKER DRIVE) (19401)
 NEW HOPE ROAD (JUDY WALKER DRIVE TO ARCHER HIGH SCHOOL) (19401)



These materials are provided "as is" without warranty of accuracy, either express or implied, including but not limited to, the implied warranties of merchantability or fitness for a particular purpose. Use of these materials constitutes acceptance of the disclaimer of liability. The contents of these materials are for informational purposes only and have not been prepared for, or are suitable for, legal, engineering, or accounting purposes. Use of this information should be made on the basis of the primary data and information sources to ascertain the validity of the information.

PROJECT DESCRIPTION SUMMARY:

The project includes approximately 1.2 miles of 10 foot wide shared use path from Callie Still Road to Alcovy River Drive, the replacement and augmentation of the existing bridge with pedestrian/bicycle access and safety improvements, as well as improvements to one access point of Archer High School. The project is funded by the 2009 SPLOST (Department of Community Services) & 2014 SPLOST programs.