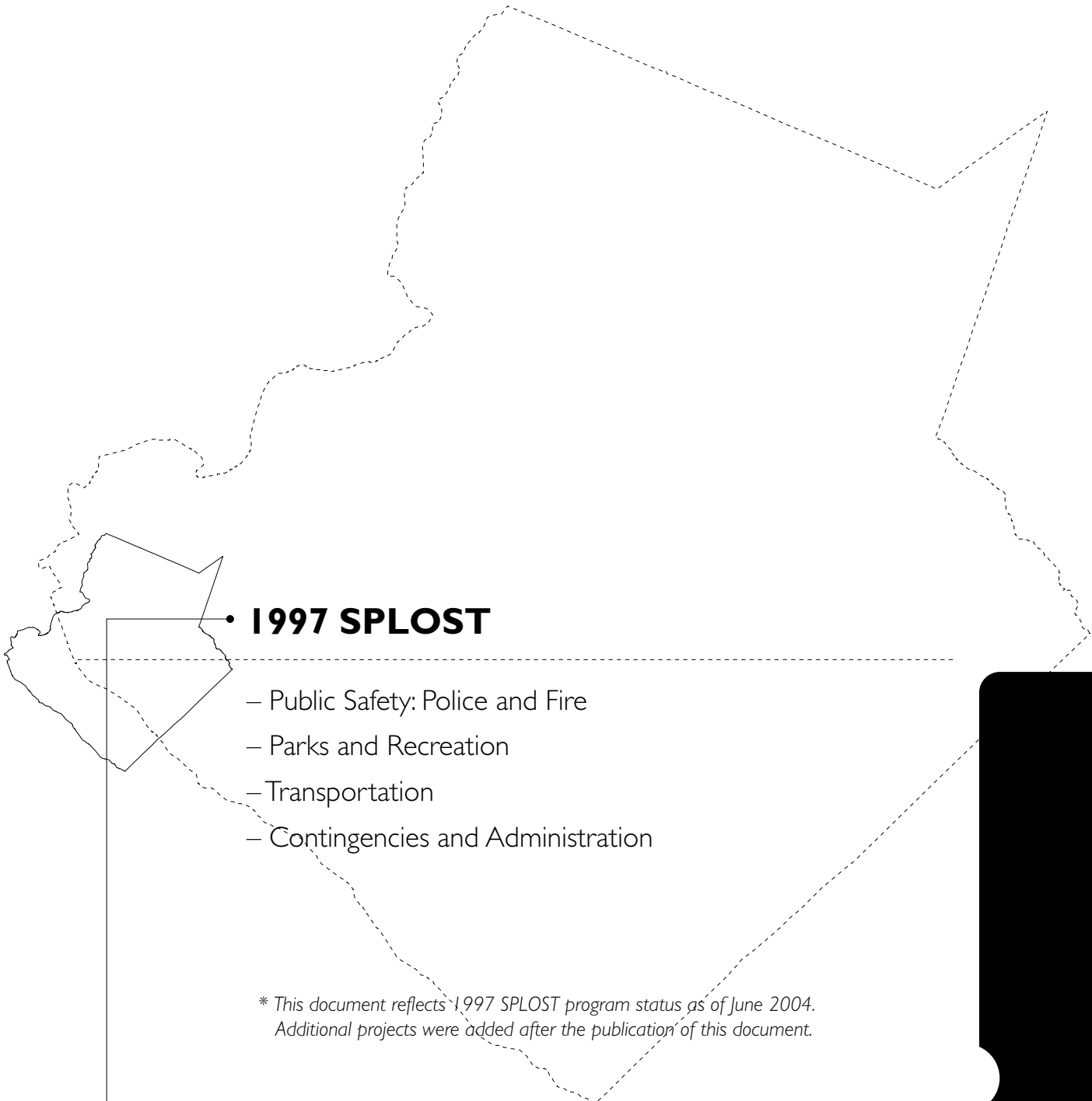


**gwinnett**county

• special purpose local  
option sales tax program  
**1997**



GEORGIA



• **1997 SPLOST**

- Public Safety: Police and Fire
- Parks and Recreation
- Transportation
- Contingencies and Administration

*\* This document reflects 1997 SPLOST program status as of June 2004.  
Additional projects were added after the publication of this document.*



• public safety: police and fire

# 1997 SPECIAL PURPOSE LOCAL OPTION SALES TAX (SPLOST)

**project**

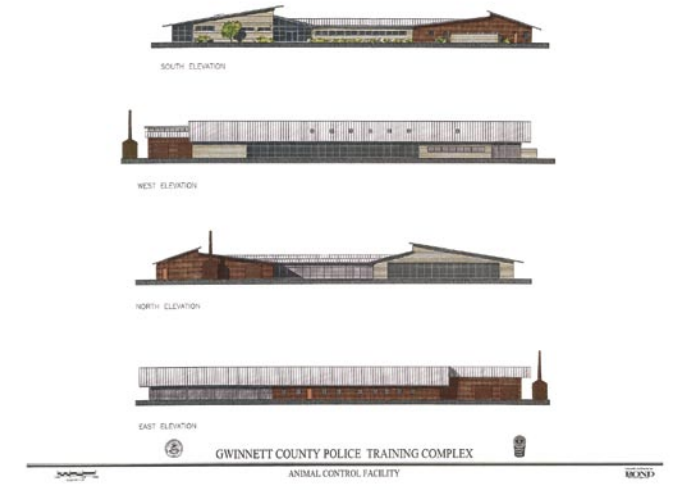
Animal Control Facility

**description**

New animal control facility to include 31,000-sq.-ft. facility, 1,200-sq.-ft. barn, and pasture area.

**SPLOST funding**

\$735,143



**project**

Aviation Hangar

**description**

The use of this facility is to be shared by both the Airport (new administrative offices) and Police Services (Aviation Hangar).

**SPLOST funding**

\$459,345



# 1997 SPECIAL PURPOSE LOCAL OPTION SALES TAX (SPLOST)

**project**

Central Police Precinct

**description**

Project is the development of a new police precinct and Crime Prevention Unit on a five-acre tract on Satellite Boulevard near Old Norcross Road. This facility will have 13,500 sq. ft. and parking for 100 vehicles.

**SPLOST funding**

\$2,591,396



**project**

Eastside Precinct 7 (Dacula/Hog Mountain Area)

**description**

Project is purchase of an approximately five-acre site in the Dacula/Hwy. 316 area and development of an 11,500-sq.-ft. police precinct with approximately 100 parking spaces.

**SPLOST funding**

\$303,190



*Property for Eastside Precinct 7 on Alcovy Road*

# 1997 SPECIAL PURPOSE LOCAL OPTION SALES TAX (SPLOST)

**project**

Mall of Georgia Precinct

**description**

New precinct located near Mall of Georgia at Ga. Hwy. 20 and I-85. Approximately 11,500-sq.-ft. building with 100 spaces for parking. No land acquisition due to donation.

**SPLOST funding**

\$2,256,760



**project**

Police Headquarters Expansion/Renovation

**description**

Expand complex located at 770 Hi-Hope Road to facilitate adequate space to conduct all police operations including an emergency communications center for police, fire, EMS, and sheriff. Project includes renovation of existing buildings.

**SPLOST funding**

\$2,161,244



# 1997 SPECIAL PURPOSE LOCAL OPTION SALES TAX (SPLOST)

**project**

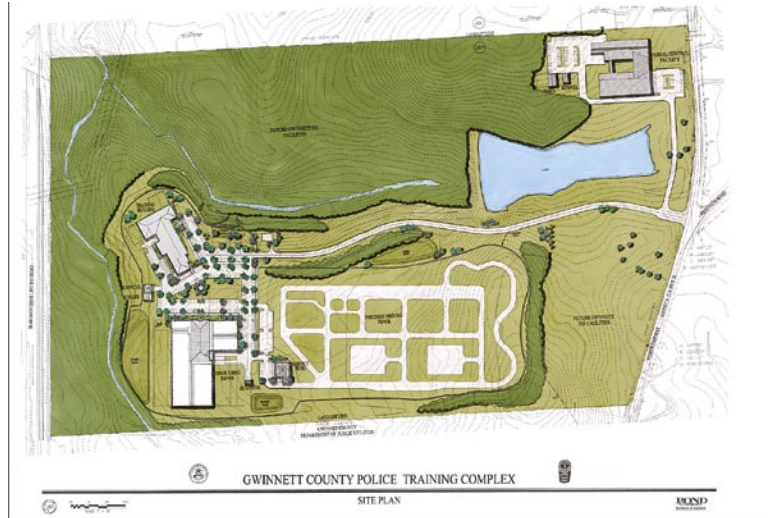
Police Training Center

**description**

The project is the development of a comprehensive law enforcement training facility inclusive of site purchase and design and construction of a 25,000-sq.-ft. or larger training/classroom building, 34-lane indoor firing range (50 meters) with expansion capability, 10-lane indoor/outdoor firing range (100 meters) also with expansion capability and a multi-acre precision driving course.

**SPLOST funding**

\$4,219,958



**project**

Precinct 6 (Grayson/Loganville Area)

**description**

Purchase of a four-acre site for a new police precinct in the Grayson/Loganville area.

**SPLOST funding**

\$54,640



*Property for Precinct 6 located in Bay Creek Park*

# 1997 SPECIAL PURPOSE LOCAL OPTION SALES TAX (SPLOST)

**project**

Southside Police Precinct

**description**

Relocation from a leased facility to a new 10,000-sq.-ft. Southside police precinct. The site is located at Stone Drive and Highway 78 in Snellville (Commission District 3).

**SPLOST funding**

\$1,890,468



**project**

Westside Police Precinct

**description**

Cost analysis has indicated that it is most cost effective to construct the new Westside Precinct at its existing site on Crescent Drive and demolish the present building. The new facility will have 11,500 sq. ft. and approximately 100 parking spaces, and its floor layout will be configured similarly to the standard established with the new Southside/Central Precinct. The existing precinct building and Fire Station 11 will be demolished, the land cleared and the parking and vehicular circulation on the site reworked. A portion of the drive in front of the station will be abandoned to expand the site.

**SPLOST funding**

\$2,208,970





# 1997 SPECIAL PURPOSE LOCAL OPTION SALES TAX (SPLOST)

**project**

Ambulance Replacement

**description**

Replacement vehicle schedule for Gwinnett County ambulances.

**SPLOST funding**

\$281,000



**project**

Ambulance Service Expansion

**description**

Expansion of the Gwinnett County Ambulance Service and number of ambulance units needed to provide an adequate emergency medical service to the citizens of Gwinnett County.

**SPLOST funding**

\$680,000



# 1997 SPECIAL PURPOSE LOCAL OPTION SALES TAX (SPLOST)

**project**

Fire Academy Improvements

**description**

To construct a burn building on a training tarmac. Project incorporates master plan including fueling stations at Fire Stations 17 and 18.

**SPLOST funding**

\$1,734,044



**project**

Fire Administrative Headquarter's Complex

**description**

New Fire Administrative Headquarter's Complex composed of a new Fire Headquarter's building, new Fire Supply warehouse facility and a future site for new Fire Station 29. The Fire Headquarters building will be approximately 25,000 sq. ft. and the Fire Supply warehouse facility will be approximately 16,000 sq. ft. The Fire complex will occupy 8 – 10 acres.

**SPLOST funding**

\$5,792,552



# 1997 SPECIAL PURPOSE LOCAL OPTION SALES TAX (SPLOST)

**project**

Fire Apparatus Program

**description**

Fire Apparatus Scheduled Vehicle Replacement Program.

**SPLOST funding**

\$8,211,418



**project**

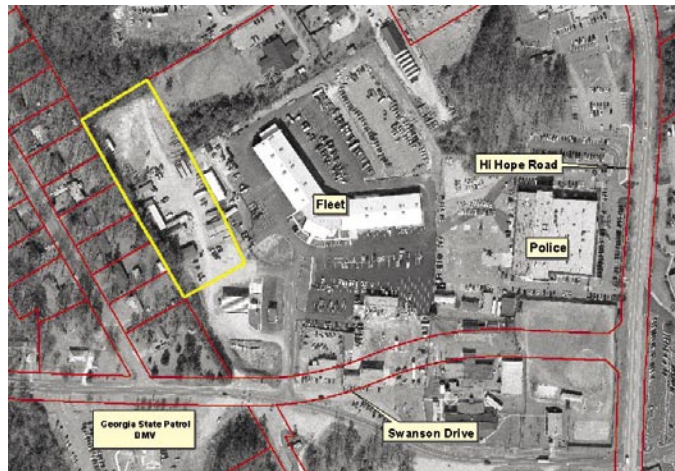
Fire Apparatus Storage Facility

**description**

The project is to construct a 14,150-sq.-ft. fire apparatus storage building to house reserve fire apparatus and to provide small engine repair for the Fire Service. The facility is to be located next to the Fleet Maintenance Facility on the Parks and Recreation storage area once they relocate.

**SPLOST funding**

\$1,610,000



# 1997 SPECIAL PURPOSE LOCAL OPTION SALES TAX (SPLOST)

**project**

Fire Station 5 Relocation

**description**

A three-bay fire station with approximately 12,000 sq. ft. to be located in the Gwinnett Place Mall area central to Satellite Blvd. The project includes relocation of existing Engine Company 5 and the addition of a new Ladder Company 5 with two new fire apparatus.

**SPLOST funding**

\$5,634,000



**project**

Fire Station 11 Relocation

**description**

A three-bay fire station with approximately 12,000 sq. ft. to be located on Live Oak Parkway in the general vicinity of the present fire station.

**SPLOST funding**

\$2,568,740



# 1997 SPECIAL PURPOSE LOCAL OPTION SALES TAX (SPLOST)

**project**

Fire Station 22 (Southside)

**description**

New fire station with fueling station located on Stone Drive near Highway 78 in Commission District 3. Project includes new pumper truck.

**SPLOST funding**

\$2,153,944



**project**

Fire Station 23 (Steve Reynolds Boulevard)

**description**

A two-bay station with approximately 8,800 sq. ft. to be located on Steve Reynolds Boulevard adjacent to the Meadowcreek High School. The project includes the addition of a new Engine Company 23.

**SPLOST funding**

\$1,920,332



# 1997 SPECIAL PURPOSE LOCAL OPTION SALES TAX (SPLOST)

**project**

Fire Station 24 (Mall of Georgia)

**description**

A three-bay fire station with approximately 12,000 sq. ft. to be located in the Mall of Georgia area central to Gravel Springs Road, Mill Creek Parkway, and Woodward Mill Parkway. The project includes the addition of a new Engine Company 24 and Ladder Tender Company 24.

**SPLOST funding**

\$3,058,041



**project**

Fire Station 25 (Berkmar/North Lilburn)

**description**

A two-bay fire station with approximately 8,800 sq. ft. to be located in the Highway 29/ Pleasant Hill Road area near Berkmar High School. The project includes the addition of a new Engine Company 25. Project also includes the Lilburn/West Gwinnett Fueling Station.

**SPLOST funding**

\$3,604,000



# 1997 SPECIAL PURPOSE LOCAL OPTION SALES TAX (SPLOST)

**project**

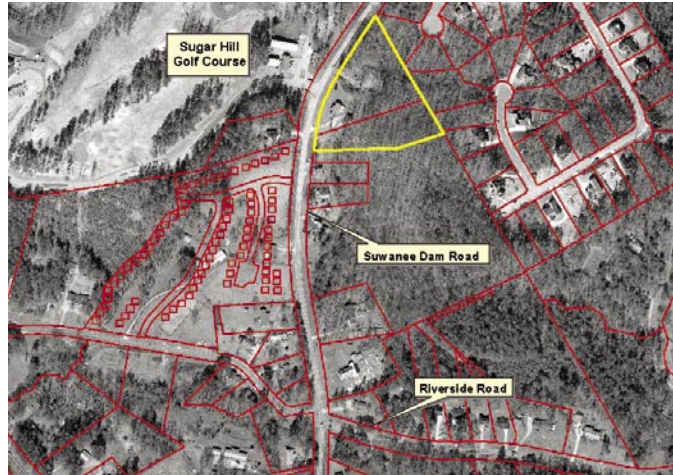
Fire Station 26 (West Sugar Hill/Buford)

**description**

A two-bay fire station with approximately 8,800 sq. ft. to be located in the Suwanee Dam Road corridor of northwestern Gwinnett County. The project includes the addition of a new Engine Company 26.

**SPLOST funding**

\$2,700,000



Site of future Fire Station 26

**project**

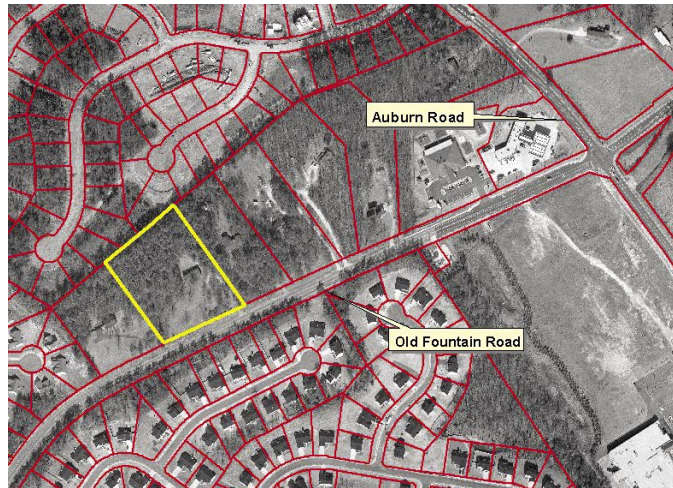
Fire Station 27 (Hwy 324/Dacula Area)

**description**

A new two-bay fire station in the eastern Hog Mountain vicinity. The facility would be 8,800 sq. ft. and similar to Fire Stations 6 and 23. The project includes the addition of a new engine company and fire apparatus.

**SPLOST funding**

\$166,830



Site of future Fire Station 27

# 1997 SPECIAL PURPOSE LOCAL OPTION SALES TAX (SPLOST)

**project**

Fire Station 28 (Rosebud/Loganville Area)

**description**

A new two-bay fire station in the eastern Snellville/Rosebud vicinity. The facility would be 8,800 sq. ft. and similar to Fire Stations 6 and 23. The project includes the addition of a new engine company and fire apparatus.

**SPLOST funding**

\$250,000



**project**

Fire Station Renovations

**description**

Part One is the renovation and expansion of the leased space from the city of Suwanee for Fire Station 13. Part Two is the renovation and expansion of the old Fire Headquarters as a part of Fire Station 9. The two renovation sub-projects include the relocation of plumbing, HVAC, electrical and changes to room dimensions.

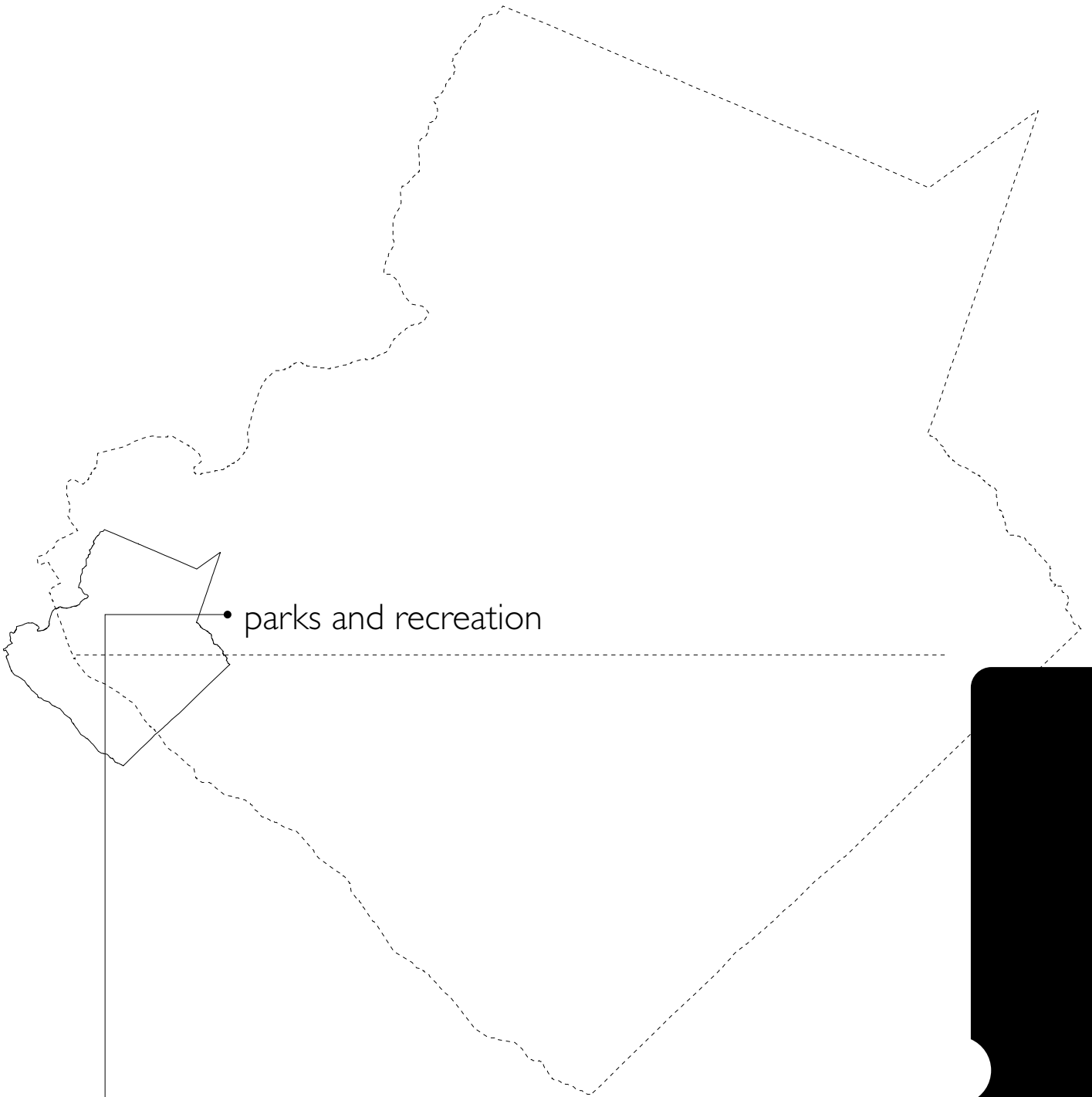
**SPLOST funding**

\$600,000



*Fire Station 9  
will be renovated*





• parks and recreation

# 1997 SPECIAL PURPOSE LOCAL OPTION SALES TAX (SPLOST)

**project**

Best Friend Park Renovations/Improvements

**description**

Renovate the gym, replace the tennis center pro shop, pave the tennis center parking lot, add sidewalks and landscaping to the park, and add park signage.

**SPLOST funding**

\$1,627,815

*Hudlow Tennis Center  
at Best Friend Park*



**project**

Bethesda Park Development

**description**

Design park extension project. Add parking lots for baseball/softball and soccer areas, restroom for pee wee/tee ball fields, park road and utilities, sidewalks and paved multi-use trail, improve signage, landscaping, and irrigation.

**SPLOST funding**

\$2,068,566



# 1997 SPECIAL PURPOSE LOCAL OPTION SALES TAX (SPLOST)

**project**

Dacula Park Redevelopment

**description**

Implement redevelopment and facilities expansion of the park including new ball field and football field developments, expanded passive recreation, maintenance facility, signage, perimeter trail, automobile and pedestrian circulation, and other infrastructure improvements.

**SPLOST funding**

\$3,300,623



**project**

George Pierce Park – Expansion/Development

**description**

Following the purchase of the land for park expansion, park improvements will be prioritized based on available funding. These improvements include: improve storm drainage, replace pond dam, add paved perimeter trail and park sidewalks, pedestrian controls, signage, irrigation, landscape, miscellaneous concrete paving, etc.

**SPLOST funding**

\$1,627,954



# 1997 SPECIAL PURPOSE LOCAL OPTION SALES TAX (SPLOST)

**project**

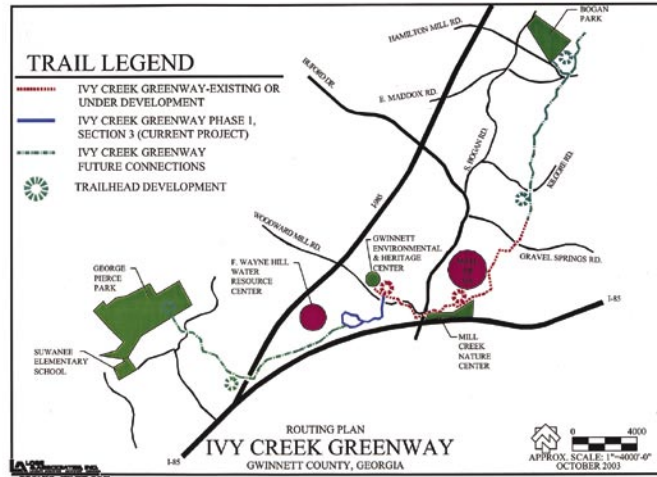
Greenway Development

**description**

Prepare Greenway Master Plans and construction documents for selected corridors. Obtain Greenway corridors and associated parking and service areas by means of easement and fee simple purchase. Construct Greenway trails and associated signage, restroom facilities, and other improvements.

**SPLOST funding**

\$1,188,905



**project**

Nature Center

**description**

The Environmental and Heritage Center will incorporate a facility for environmental education, a natural history and cultural history museum, and provide passive recreational activities such as trails.

**SPLOST funding**

\$19,900



*Gwinnett County  
Environmental and  
Heritage Center*

# 1997 SPECIAL PURPOSE LOCAL OPTION SALES TAX (SPLOST)

**project**

Harmony Grove Soccer Complex Renovations

**description**

Construct new concession/restroom building. Make various vehicular and pedestrian system paving improvements, pave picnic plaza and bleacher areas, improve drainage/lighting, and add park signage.

**SPLOST funding**

\$504,791



**project**

Jones Bridge Park Shoreline Stabilization

**description**

Stabilize/limit erosion of river bank, reforestation and revegetation of the bank, and construct elements to control and direct access to the bank and river.

**SPLOST funding**

\$422,847



# 1997 SPECIAL PURPOSE LOCAL OPTION SALES TAX (SPLOST)

**project**

Mountain Park Redevelopment

**description**

Provide a park master plan and then implement redevelopment and facilities expansion of the park including new ballfield and tennis complexes, expanded passive recreation, automobile pedestrian circulation, maintenance complex, and infrastructure improvements.

**SPLOST funding**

\$4,008,681



**project**

Passive Community Park Program

**description**

Addition of new park acreage in Kanoheda Elementary School area.

**SPLOST funding**

\$965,784



**project**

North District New Park Development

**description**

Acquire total of 200 acres of park land on one or two sites. Master Plan the site; design Phase I development of a new community park with soccer field complex, passive recreation facilities, and natural open space.

**SPLOST funding**

\$7,953,108



**project**

Rhodes Jordan Park Expansion/Development

**description**

Acquire additional land and make improvements to existing and new park properties. Development of an eight-court tennis complex. Development of a new community center with gymnasium/outdoor leisure pool. Other planned improvements include road improvements, trail, parking, concession/restroom building, and other passive improvements.

**SPLOST funding**

\$9,380,340



# 1997 SPECIAL PURPOSE LOCAL OPTION SALES TAX (SPLOST)

**project**

Shorty Howell Park Expansion/Development

**description**

Acquire park expansion acreage, prepare park master plan.

**SPLOST funding**

\$4,197,729



**project**

South District New Park Development

**description**

Acquire 150 acres of park land on one site and master plan the site. If funds are available, purchase additional South District park land with emphasis on expansion of existing facilities.

**SPLOST funding**

\$3,102,585



*66-acre expansion  
at Lenora Park*



# 1997 SPECIAL PURPOSE LOCAL OPTION SALES TAX (SPLOST)

**project**

Pinckneyville Park

**description**

Construction design and administration for Pinckneyville Park. Development of existing park land with soccer complex, trails, picnic areas, and playgrounds. Also includes land expansion and development of a community/arts center. This project has also established County design standards for future projects.

**SPLOST funding**

\$6,792,187



**project**

Tribble Mill Park Improvements

**description**

Add park improvements to include a number of facilities: stage and equipment for the festival field, two comfort stations, multi-purpose and nature trails, road extensions to the fishing lake and festival field, lake access facilities, increased parking and other infrastructure improvements, grand pavilion, signage, sand volleyball courts, and playground equipment.

**SPLOST funding**

\$4,224,280



# 1997 SPECIAL PURPOSE LOCAL OPTION SALES TAX (SPLOST)

**project**

Pinckneyville Park Expansion

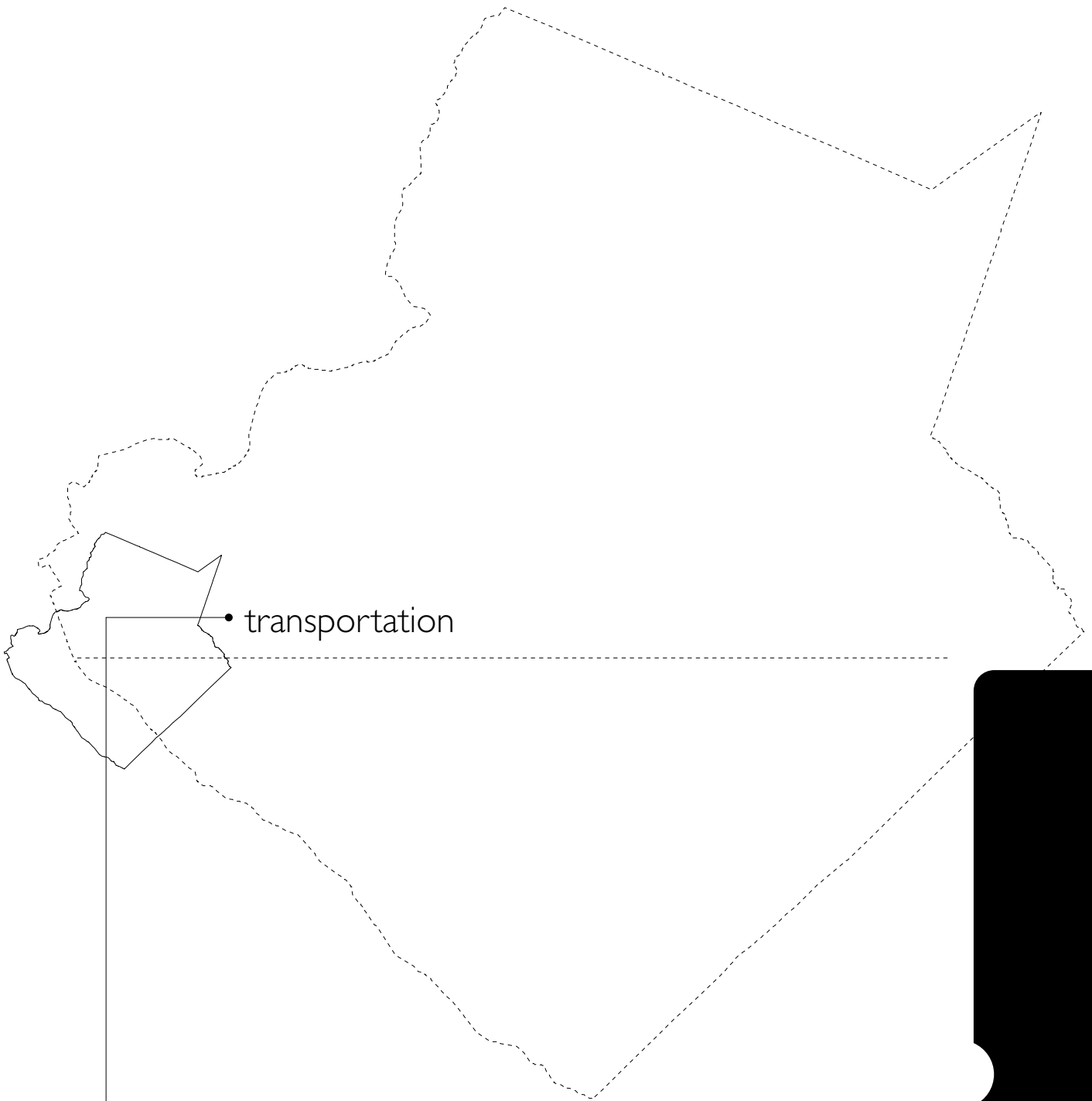
**description**

Acquire parkland in the West District, master plan the site, develop a baseball/softball complex, skating facility, large picnic pavilion, family picnic area, paved walking trail, and other passive recreation development.

**SPLOST funding**

\$8,430,312





• transportation

# 1997 SPECIAL PURPOSE LOCAL OPTION SALES TAX (SPLOST)

## project

## description

## SPLOST funding

## Bridges, Culverts, Drainage

Bridges, Culverts, Drainage Improvements consist of construction of new or reconstruction of existing bridges and culverts up to sufficiency standards.

\$26,969,785

*Bridge project on North Price Road takes the road over the existing railroad tracks*



## project

## description

## SPLOST funding

## Intersection Improvements

Intersection Improvements include the addition of turn lanes, alignment of cross streets, and improving sight distances and signalizations.

\$36,368,003

*Intersection improvements at Fence Road and Dacula Road*



# 1997 SPECIAL PURPOSE LOCAL OPTION SALES TAX (SPLOST)

## project

## Major Roads

## description

Major Roads include new road construction, new alignments, and increasing capacity of existing roads.

## SPLOST funding

\$95,018,618



*Satellite Boulevard extension*

## project

## Neighborhood Speed Control

## description

Under this program, neighborhoods can petition to have speed humps installed within their subdivisions.

## SPLOST funding

\$972,700



*Neighborhood speed control project in Plantation at Bay Creek subdivision*

**project**

Pedestrian Safety and Sidewalks

**description**

Pedestrian Safety and Sidewalks includes projects to link existing sidewalk segments or link residential areas to nearby activity centers.

**SPLOST funding**

\$21,844,269



*Pedestrian safety project  
on Plunketts Road*

**project**

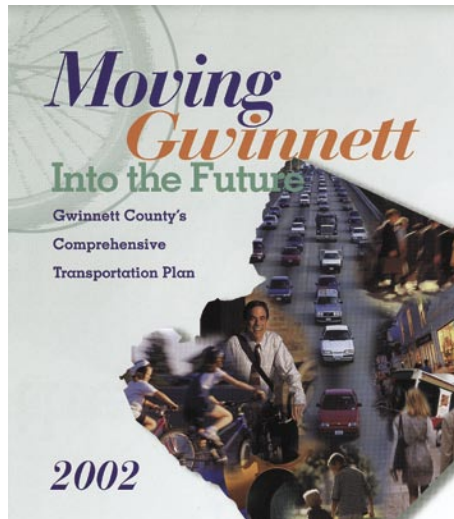
Planning

**description**

This category funds necessary studies for updating the key elements of the Comprehensive Transportation Plan.

**SPLOST funding**

\$2,486,350



# 1997 SPECIAL PURPOSE LOCAL OPTION SALES TAX (SPLOST)

## project

## Rehabilitation and Resurfacing

## description

The Rehabilitation and Resurfacing program renovates, rehabilitates, and resurfaces existing county roads to prolong the life of the road.

## SPLOST funding

\$25,317,500

*Simpson Circle was resurfaced from Old Norcross to U.S. 23*



## project

## Road Safety and Alignments

## description

Road Safety and Alignments projects correct safety deficiencies such as sight distances, horizontal and vertical alignments, and at-grade railroad crossings.

## SPLOST funding

\$54,208,098

*Safety and alignment project on Fence Road at Jenn Ann Lane*



# 1997 SPECIAL PURPOSE LOCAL OPTION SALES TAX (SPLOST)

## project

## School Safety

## description

School Safety projects improve traffic safety near schools by installing turn lanes at school entrances, installation of sidewalks, and signalization improvements.

## SPLOST funding

\$17,194,135

*School safety project at Sweetwater Middle School*



## project

## Unpaved Roads

## description

The Unpaved Road Program funds the paving of gravel and dirt roads throughout the county.

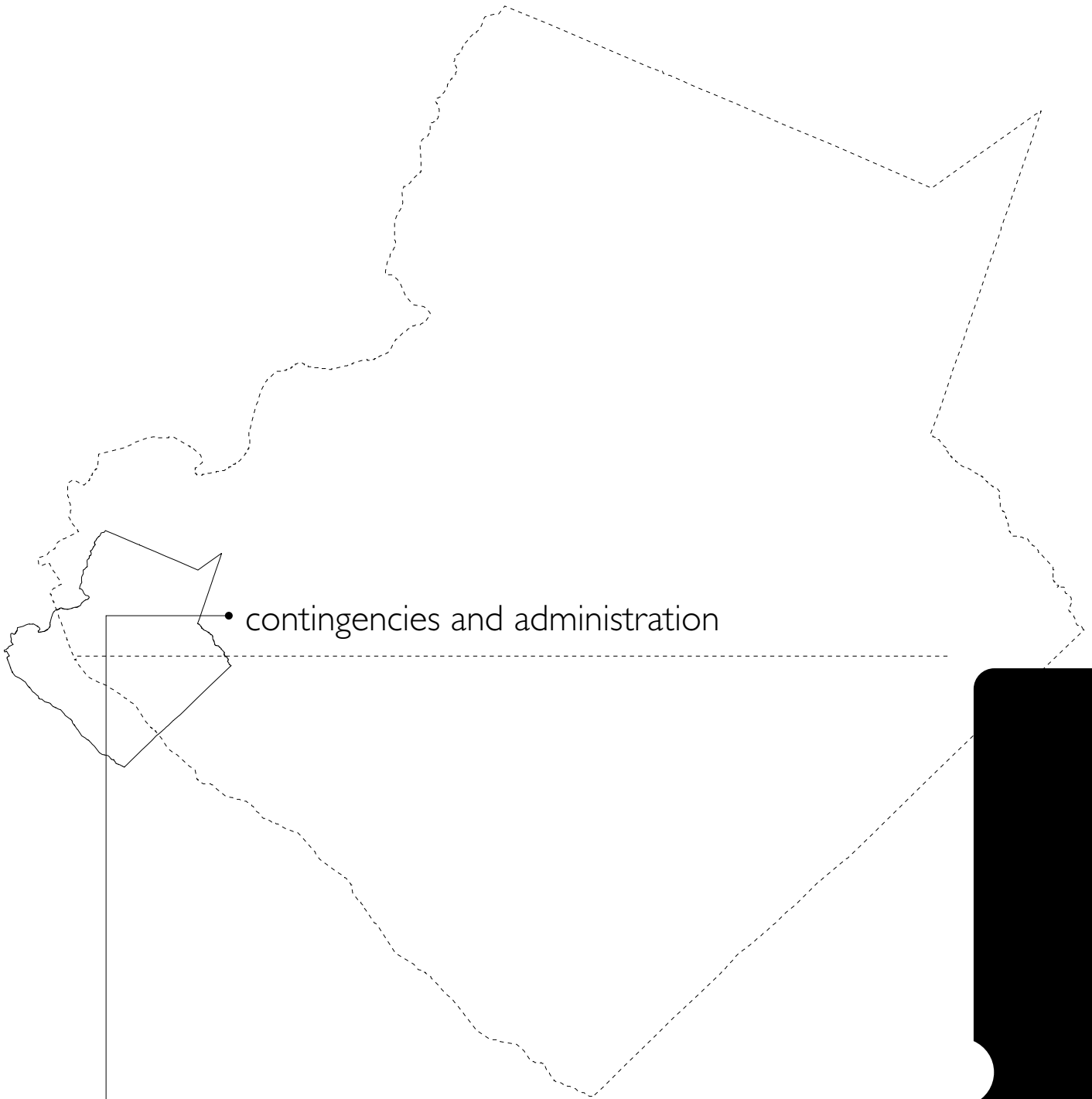
## SPLOST funding

\$14,421,039

*Westbrooks Road was paved from Old Suwanee Road to Roberts Road*







• contingencies and administration

# 1997 SPECIAL PURPOSE LOCAL OPTION SALES TAX (SPLOST)

**project** Police Program Contingency

**SPLOST funding** \$1,615,692

---

**project** Police Program Administration

**SPLOST funding** \$3,194

---

**project** Fire Program Contingency

**SPLOST funding** \$535,098

---

**project** Parks and Recreation Program Administration

**SPLOST funding** \$183,592