



THE LOOP TRAIL



VIRTUAL MEETING REMINDERS!

- Mute your computer microphone, please!
- This meeting is being recorded and will be left open for comment on the Social Pinpoint website for 14 days.

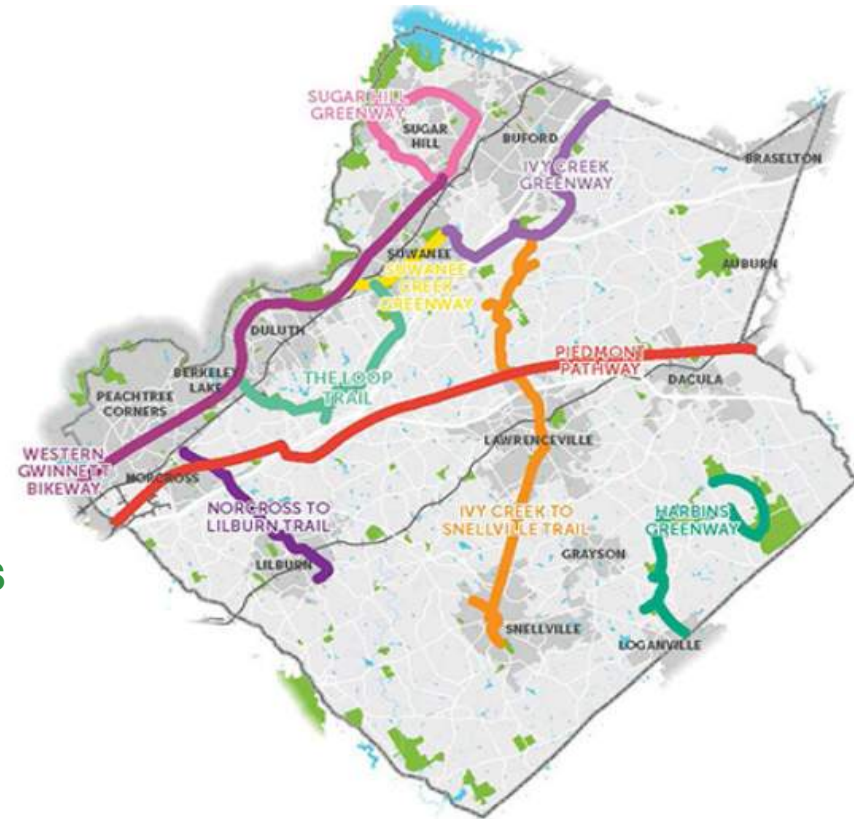
<https://planningatpond.com/thelooptrailfeasibilitystudy>

- **Hold questions until the END:** Have your smart phone ready for Pigeonhole Live polling and Q&A



AGENDA

- PIGEONHOLE LIVE INTRODUCTION POLL
- SOCIAL PINPOINT SURVEY RESULTS
- NEED AND PURPOSE-UPDATE-REVIEW
- OVERALL ALIGNMENT/ TRAIL CONTEXT ZONE TYPES
- ENLARGEMENTS OF TRAIL/ ALTERNATE ALIGNMENTS
- TRAIL EXPERIENCE/FEATURES
- PIGEONHOLE LIVE Q&A
- STAKEHOLDER AND PUBLIC MEETING NEXT STEPS/SCHEDULE



JOIN THE INTERACTIVE COMPONENT VIA PIGEONHOLE ON YOUR SMARTPHONE: THERE ARE 2 WAYS



Go to
pigeonhole.at

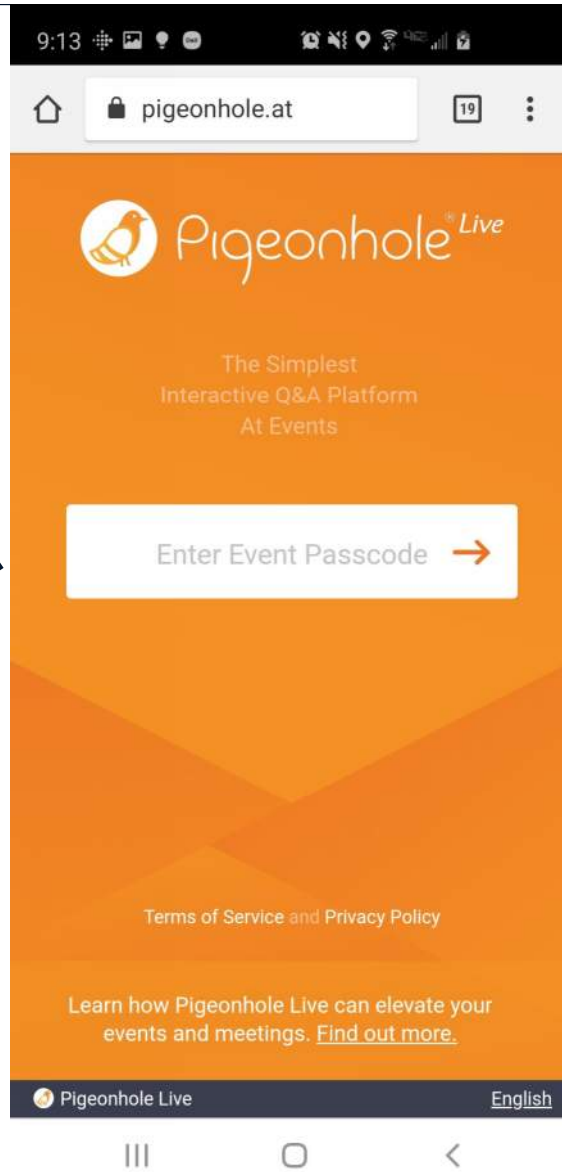
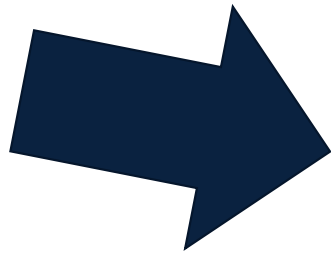
Enter passcode

THELOOP

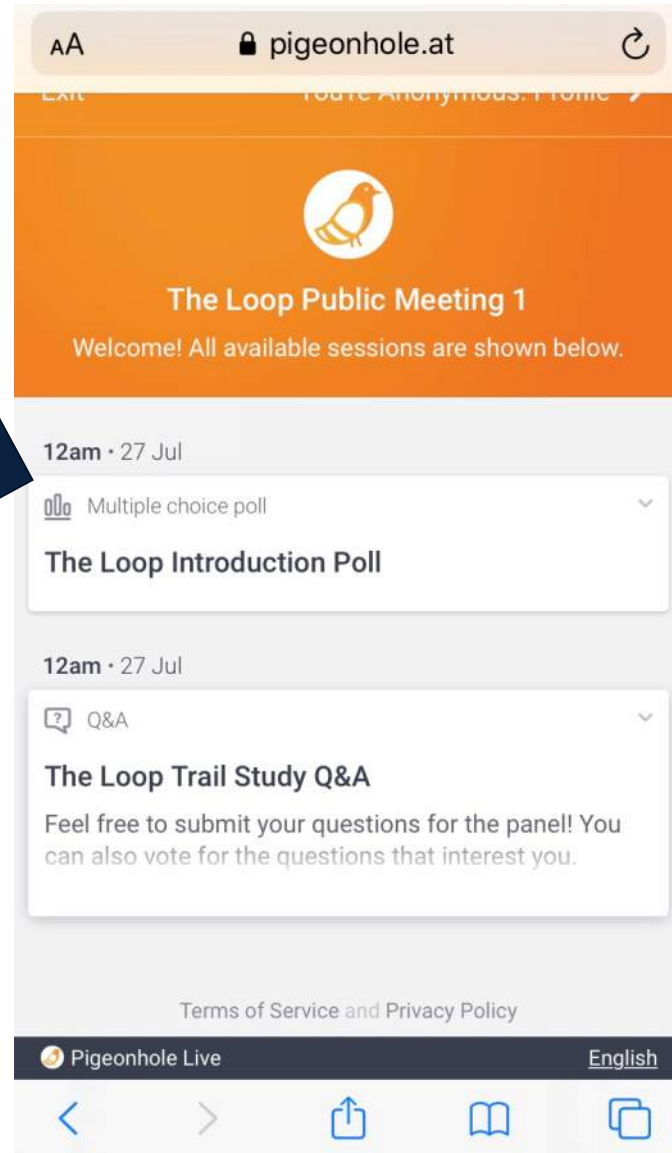
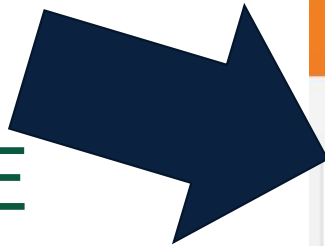
ENTER THIS
PASSCODE

THELOOP

HERE



CLICK HERE TO
SEE POLLING &
CAST YOUR VOTE



CHOOSE & CAST YOUR VOTE



[←](#) You're Anonymous. Profile [➤](#)

The Loop Introduction Poll

What is your current association with The Loop study area?

Tap on an option to vote.

I live and/or own property in the area.


I work and/or own a business in the area.

I am a frequent visitor.

I am an elected official who represents the community.

I am an appointed official who represents the community.

I am interested in the trail study process.

 Pigeonhole Live [English](#)



Pigeonhole^{Live}

Go to www.pigeonhole.at/THELOOP to vote

Question 1 of 1

LIVE 0 participants | 0 votes

What is your current association with The Loop study area?



Pigeonhole Live





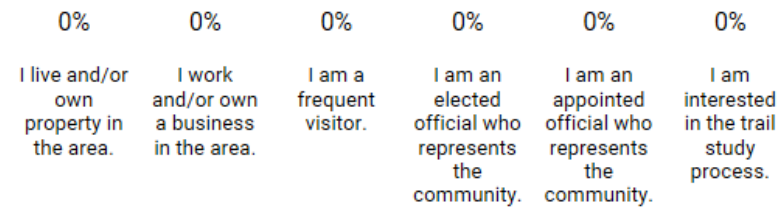
Pigeonhole^{Live}

Go to www.pigeonhole.at/THELOOP to vote

Question 1 of 1

LIVE 0 participants | 0 votes

What is your current association with The Loop study area?



Pigeonhole Live





SOCIAL PINPOINT RESULTS



SOCIAL PINPOINT SURVEY RESULTS

SELECT ALL THAT APPLY (95 RESPONDENTS)

1) What is your interest in the proposed Loop trail?

I live nearby **74**

I shop nearby **33**

I eat nearby **36**

I work nearby **20**

2) How long have you been living, working, or commuting near the proposed trail corridor?

More than 5 years **69**

One to 3 years **17**



SOCIAL PINPOINT SURVEY RESULTS

SELECT ALL THAT APPLY (95 RESPONDENTS)

3) What would you like to see more of near the proposed trail?

Parks / Greenspace **86**

Parking / Trailheads **67**

Restaurants **13**

4) What locations or destinations do you frequent in the area?

Parks **69**

Duluth Downtown **61**

Suwanee Downtown **61**

Infinite Energy **45**



SOCIAL PINPOINT SURVEY RESULTS

SELECT ALL THAT APPLY (95 RESPONDENTS)

5) What is your primary mode of transportation?

Car **90**

Bike **1**

Walk **1**

6) What design elements or trail amenities would help you feel more comfortable and encourage your use as a pedestrian or cyclist? Choose all that apply.

Lighting **71**

Emergency Phone **51**

Landscape Strip **60**

Physical barrier **43**



SOCIAL PINPOINT SURVEY RESULTS

SELECT ALL THAT APPLY (95 RESPONDENTS)

7) What traffic /operational improvements would help you feel more comfortable and encourage your use as a pedestrian or cyclist?

Pedestrian / Bike only phase or pedestrian-lead phase during signal operation **44**

Raised Median @ Intersections **43**



SOCIAL PINPOINT SURVEY RESULTS

WRITE IN QUESTIONS

8) Indicate other items that would make you feel safer

Bridges / Tunnels

Separated Uses

9) What do you like most about the area?

Events

Parks

Shopping

Convenience

Friendly



SOCIAL PINPOINT SURVEY RESULTS

WRITE IN QUESTIONS

10) What kinds of places would you like to travel to via the trail?

Parks

Downtown Areas

Restaurants

Events

Commuting

Shopping

11) Would the completion of the trail improve your quality of life?
How?

Exercise

Social Interaction



SOCIAL PINPOINT SURVEY RESULTS

12) Rate the level of comfort you have as a pedestrian on this corridor.

Mostly Comfortable **30**

Mostly Not Comfortable **23**

13) What area of trail would you like the County to prioritize first?

Most popular

McDaniel Farm Area Connections 16



SOCIAL PINPOINT WEBSITE

Please visit and provide feedback through:

<https://planningatpond.com/thelooptrailfeasibilitystudy>

This website will remain open for comment and survey responses for the next 14 days!



NEED AND PURPOSE-UPDATE-REVIEW

Need

- Several studies have explored trail segments to connect parks, other trails and significant community activity centers in the western portion of Gwinnett County. Trail segments have been designed and/or constructed within this area, although no study has examined the overall area for a continuous trail or alternative alignments. There is a significant need for a comprehensive planning effort for alternative mode transportation that connects activity centers, including the Gwinnett Place Mall, Infinite Energy Center and associated future mixed use developments, Shorty Howell Park, McDaniel Farm Park, Peachtree Ridge Park, Suwanee Creek Greenway, and Western Gwinnett Pathway as well as future transit routes. This planning study will evaluate a 17-mile trail to encompass these areas and provide both recreational and transportation infrastructure that will reduce the number of vehicular trips in this growing area.

Purpose

- The study will produce a concept document with the project alignment, typical sections, cost estimates, and project deliverability plan to position the project for future funding opportunities.

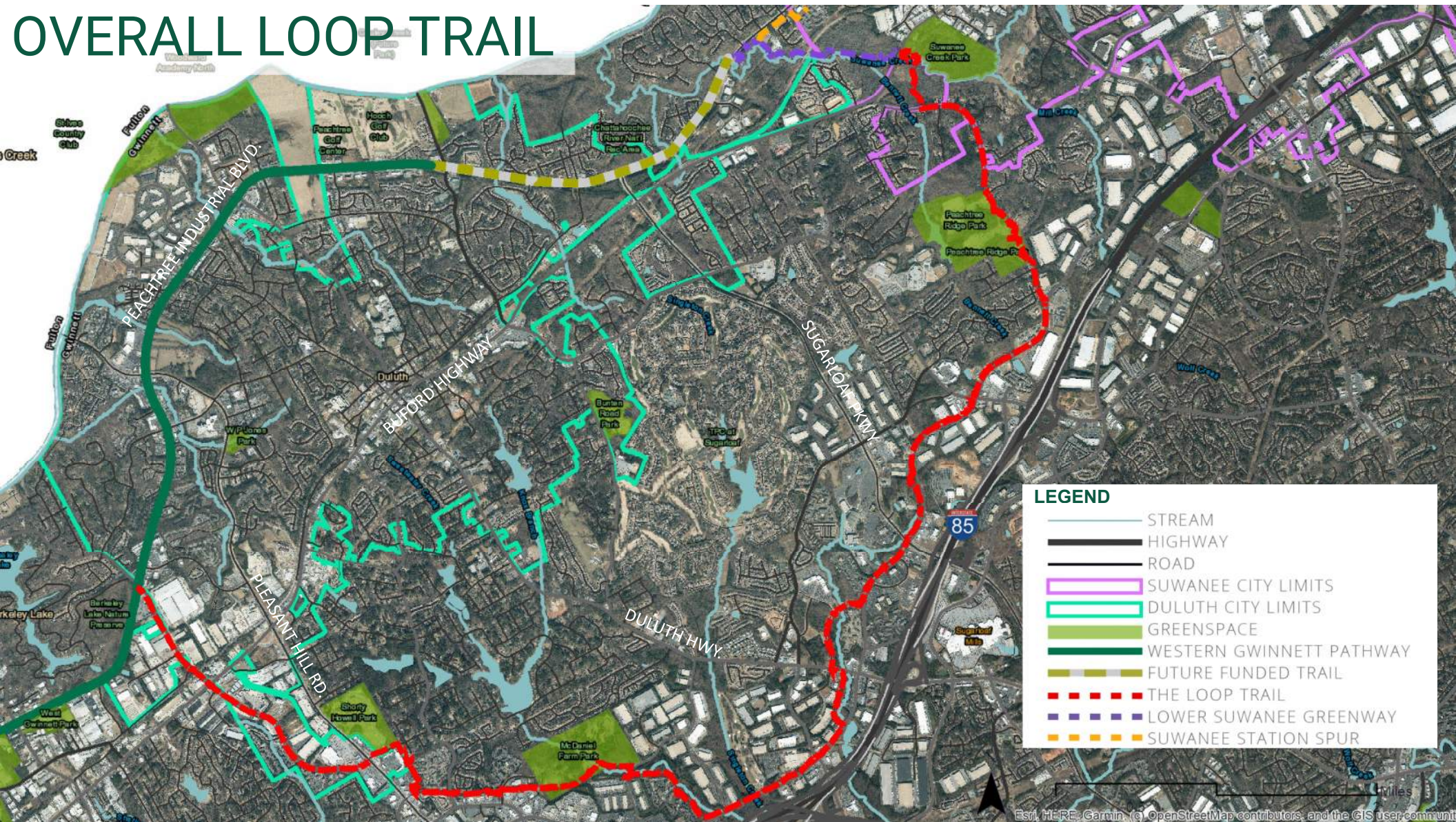




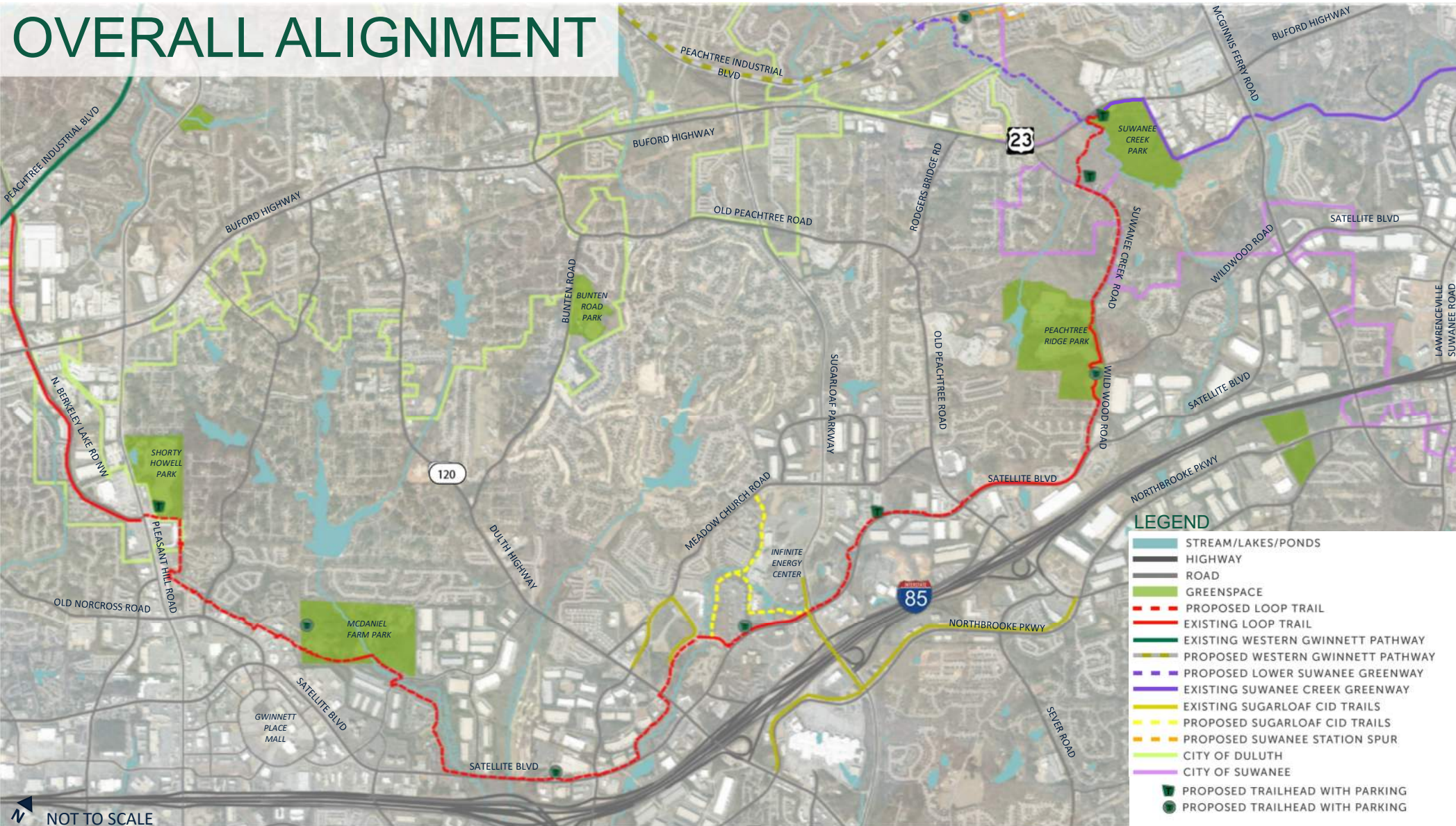
OVERALL ALIGNMENT/ TRAIL CONTEXT ZONE TYPES



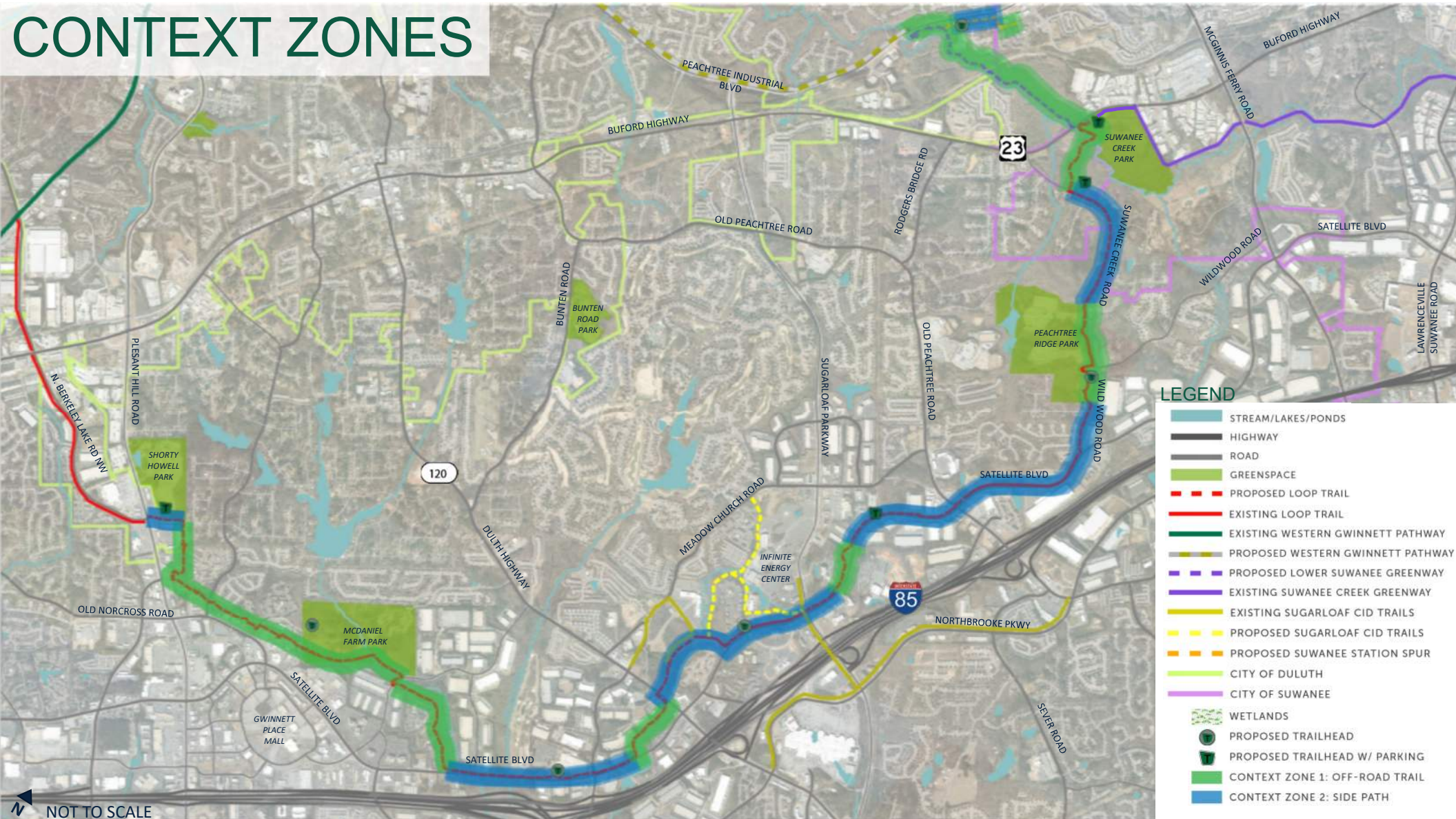
OVERALL LOOP TRAIL



OVERALL ALIGNMENT

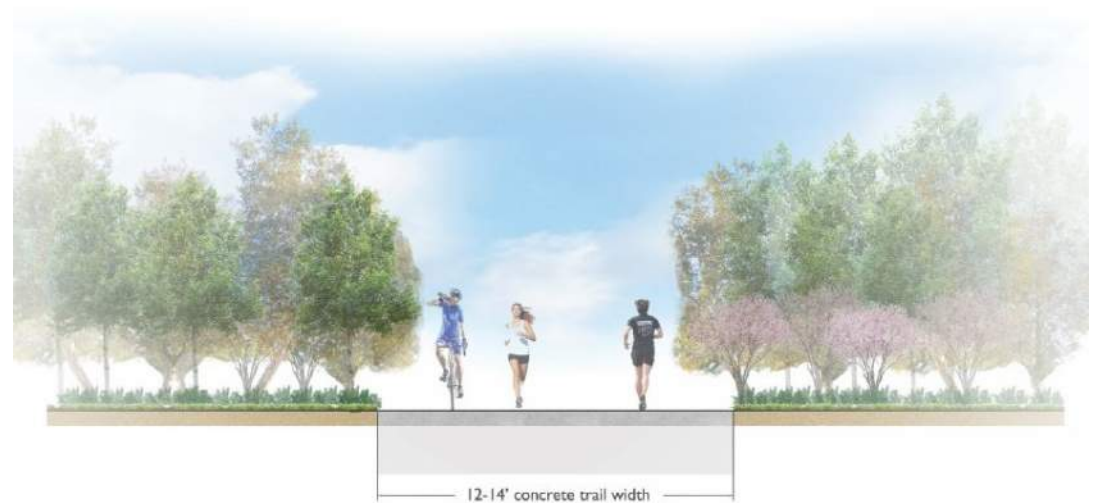


CONTEXT ZONES



TRAIL CONTEXT TYPES

- Appropriate for off-road within park, utility corridor, easement or right-of-way
- Typical trail condition with lower cost for construction
- Minimal lighting
- Signage at regular intervals
- Restrooms and parking at key locations
- Signalized road crossings or grade separation where necessary



OFF-ROAD TRAIL
Context Zone: 1 ■

TRAIL CONTEXT TYPES

- Appropriate for trail adjacent to a major or minor road, within utility corridor, easement or right-of-way
- Typical where trail runs parallel to an existing slope
- Retaining walls may or may not be required
- Lighting and signage at regular intervals
- Restrooms and parking in key locations
- Signalized road crossings or grade separation where necessary



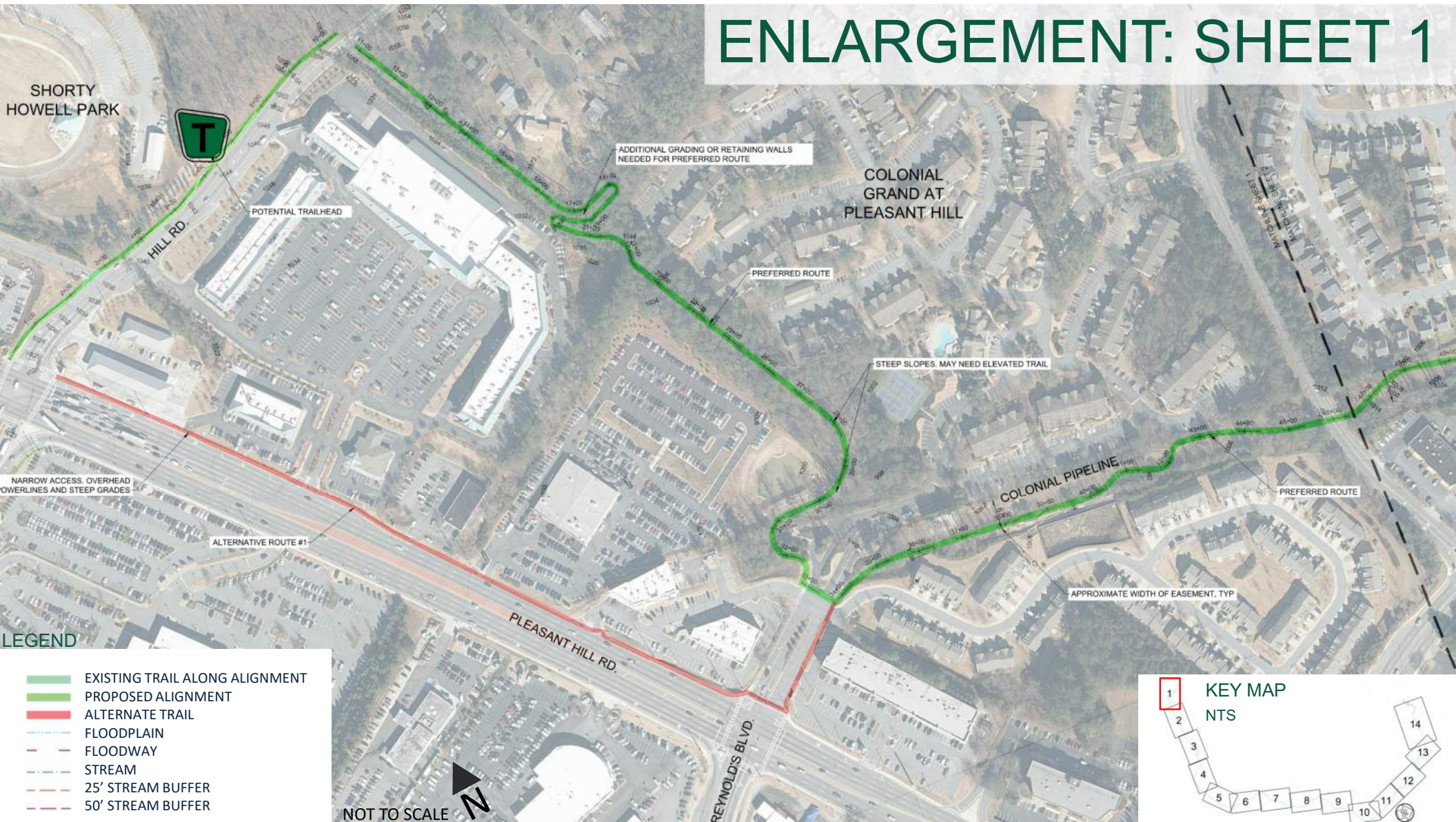
SIDE PATH TRAIL
Context Zone: 2



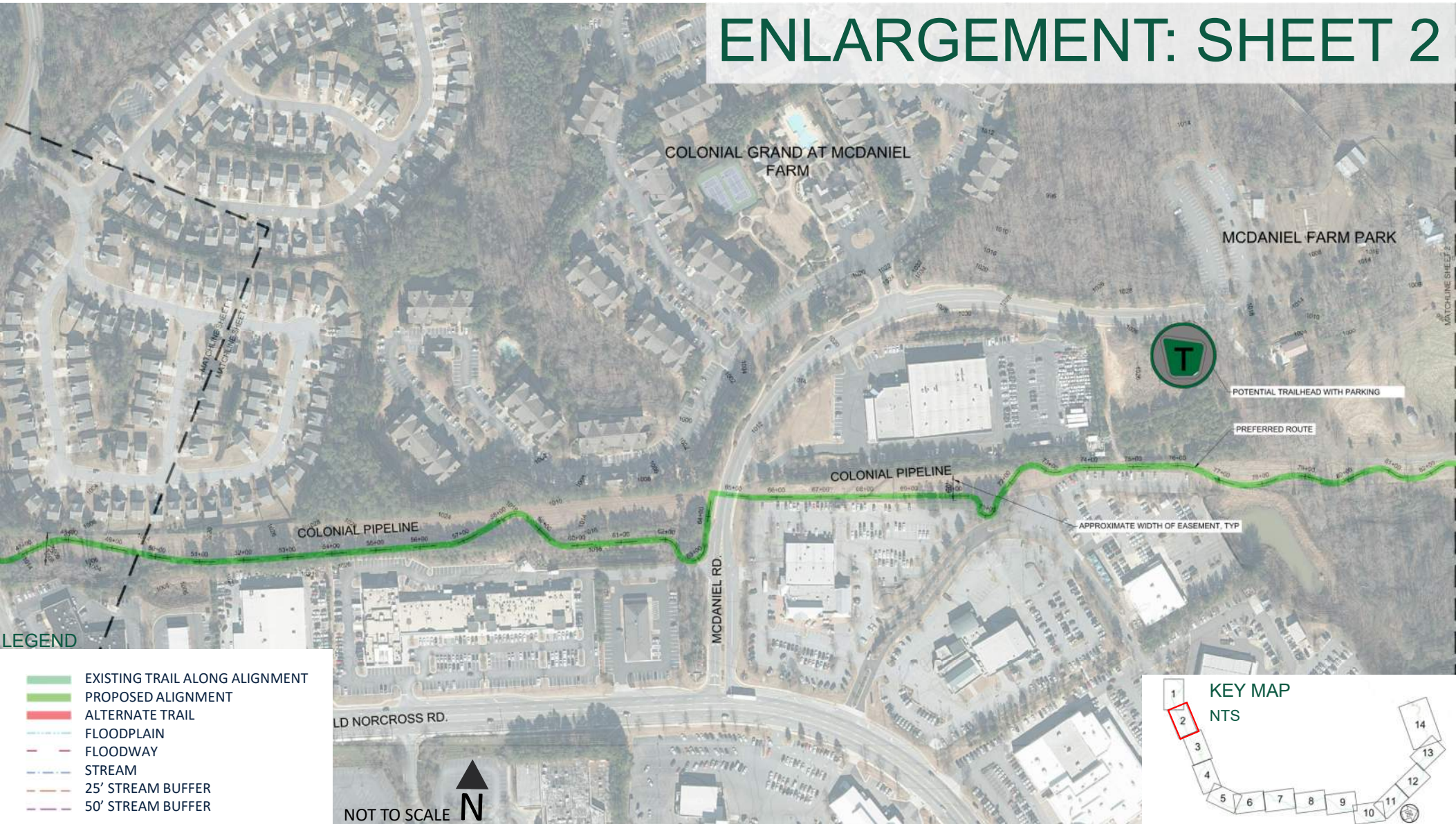
ENLARGEMENTS OF TRAILS/ ALTERNATE ALIGNMENTS



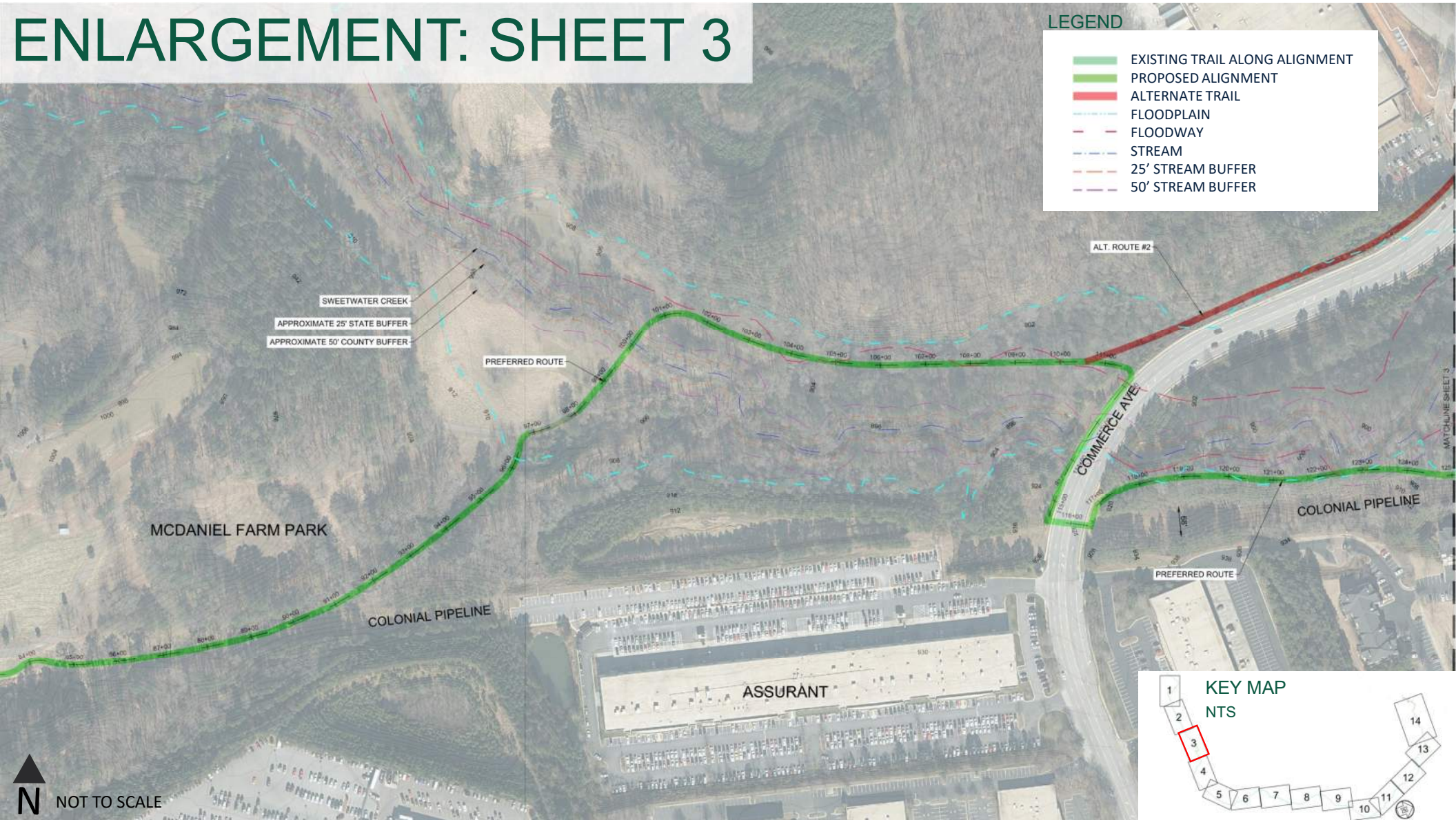
ENLARGEMENT: SHEET 1

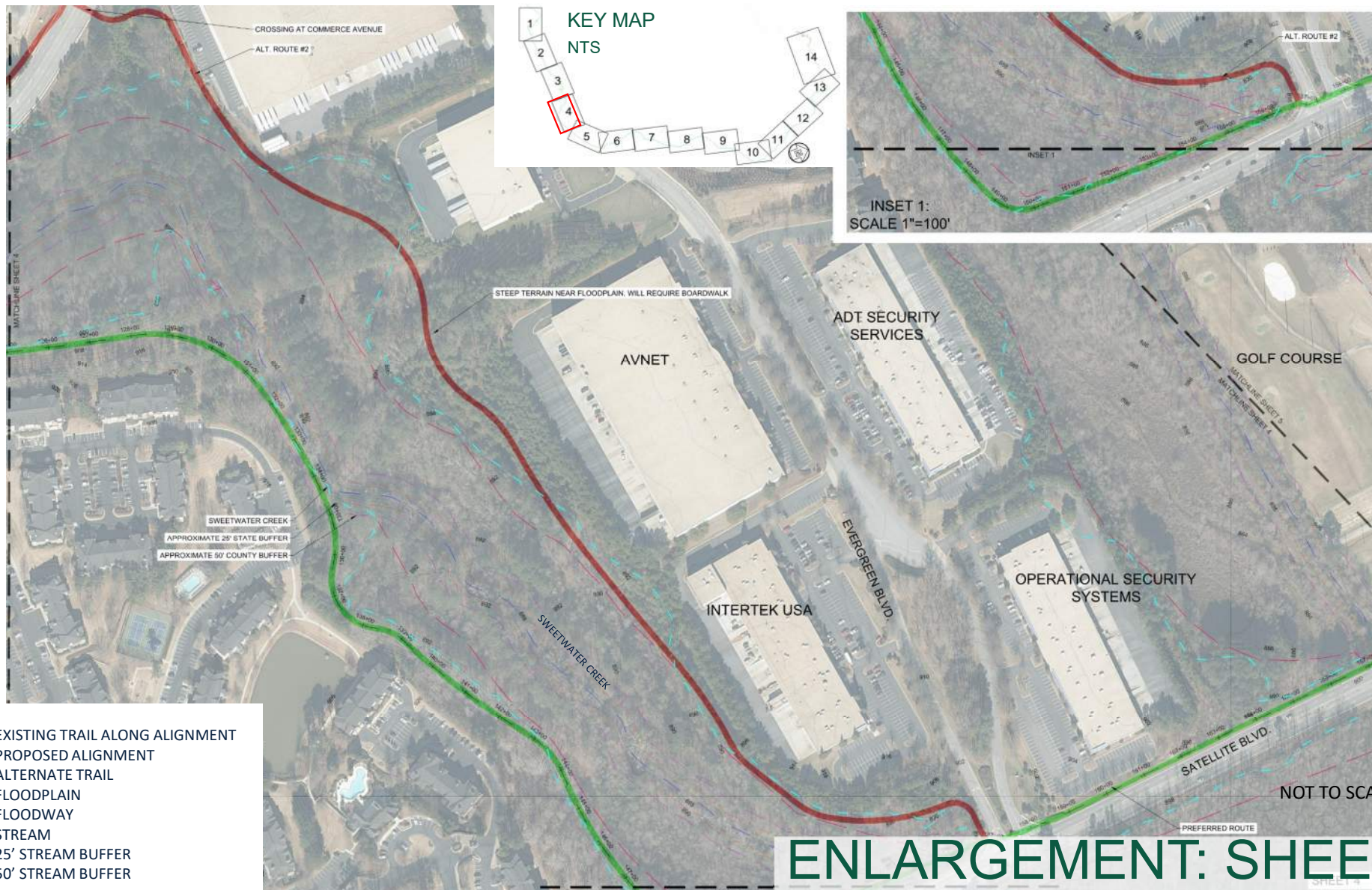


ENLARGEMENT: SHEET 2

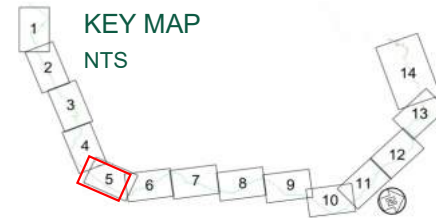


ENLARGEMENT: SHEET 3



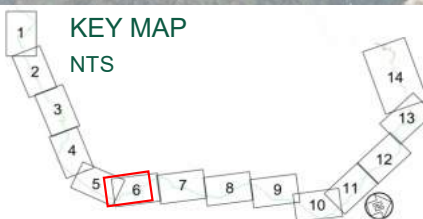


ENLARGEMENT: SHEET 5

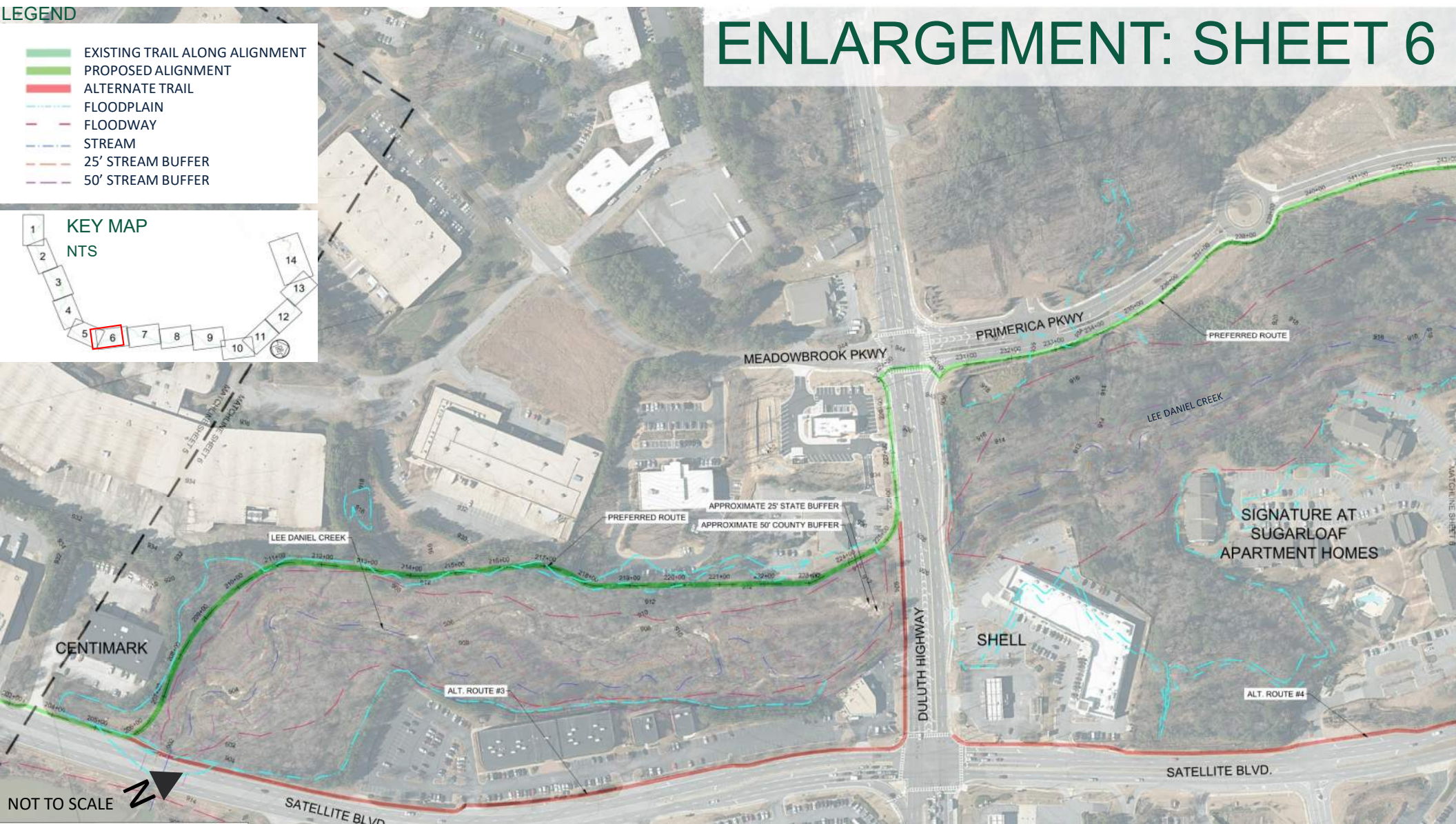


LEGEND

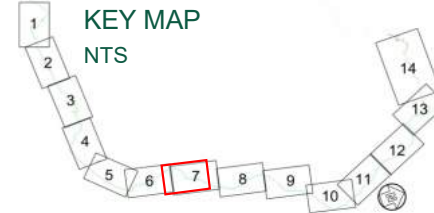
- EXISTING TRAIL ALONG ALIGNMENT
- PROPOSED ALIGNMENT
- ALTERNATE TRAIL
- FLOODPLAIN
- FLOODWAY
- STREAM
- 25' STREAM BUFFER
- 50' STREAM BUFFER



ENLARGEMENT: SHEET 6



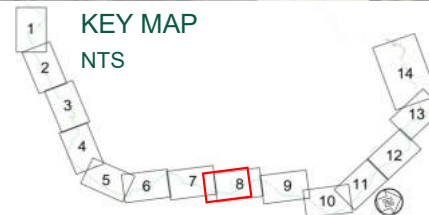
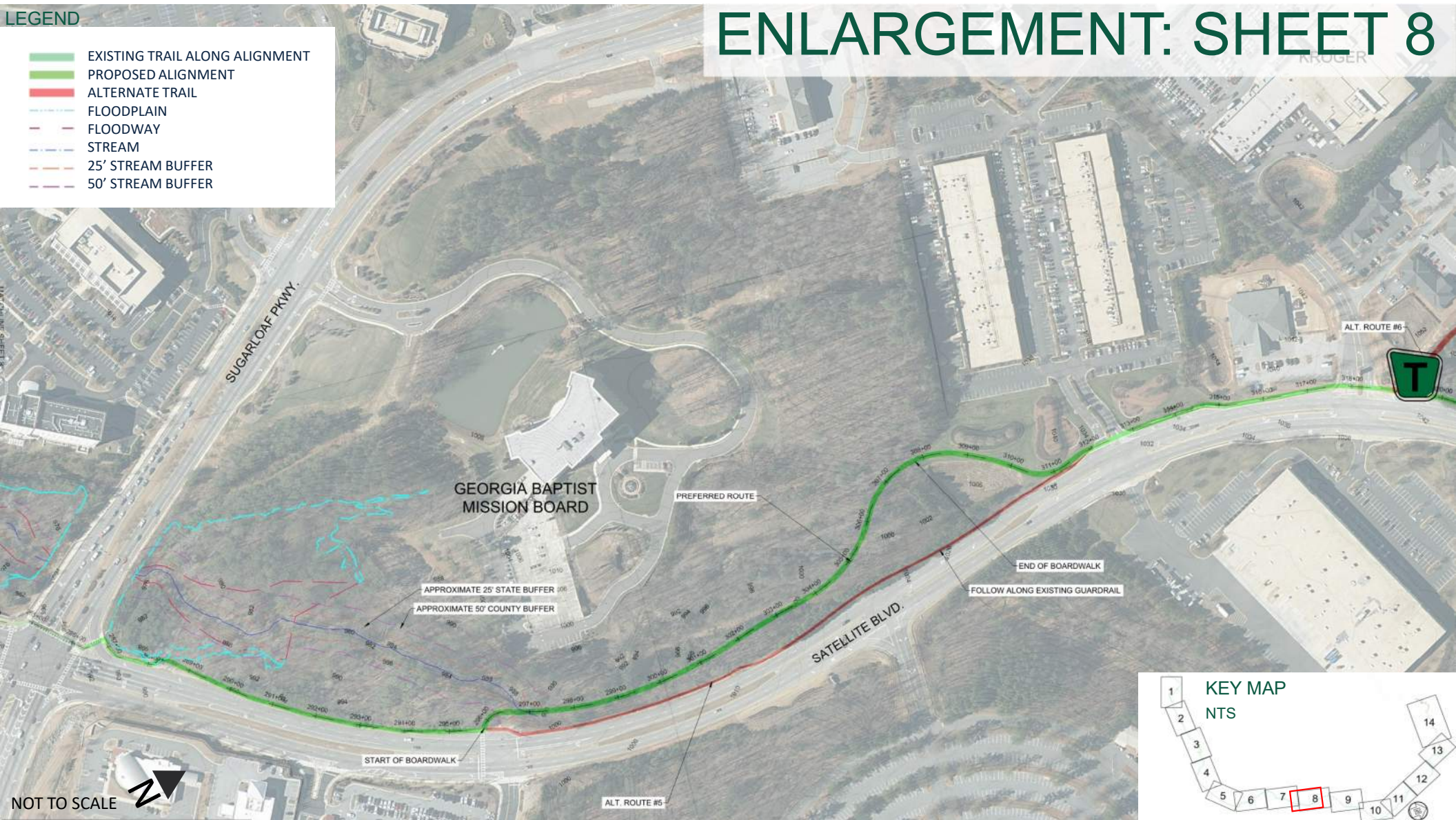
ENLARGEMENT: SHEET 7



LEGEND

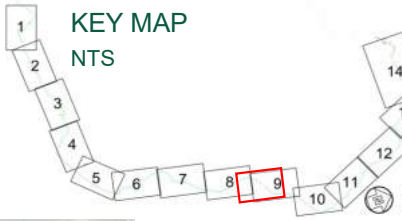
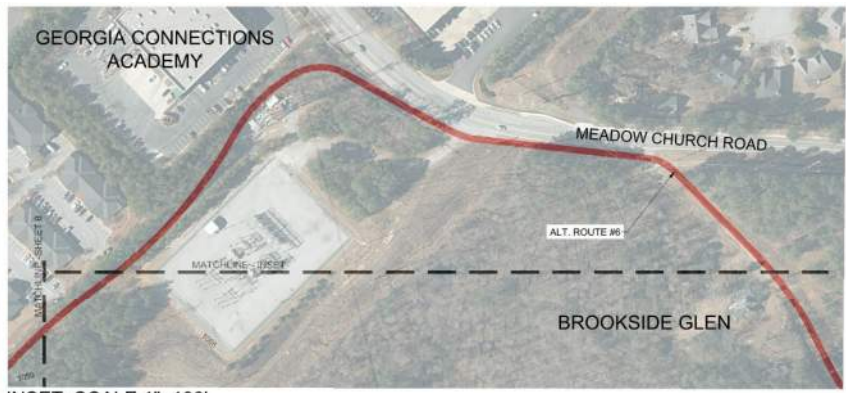
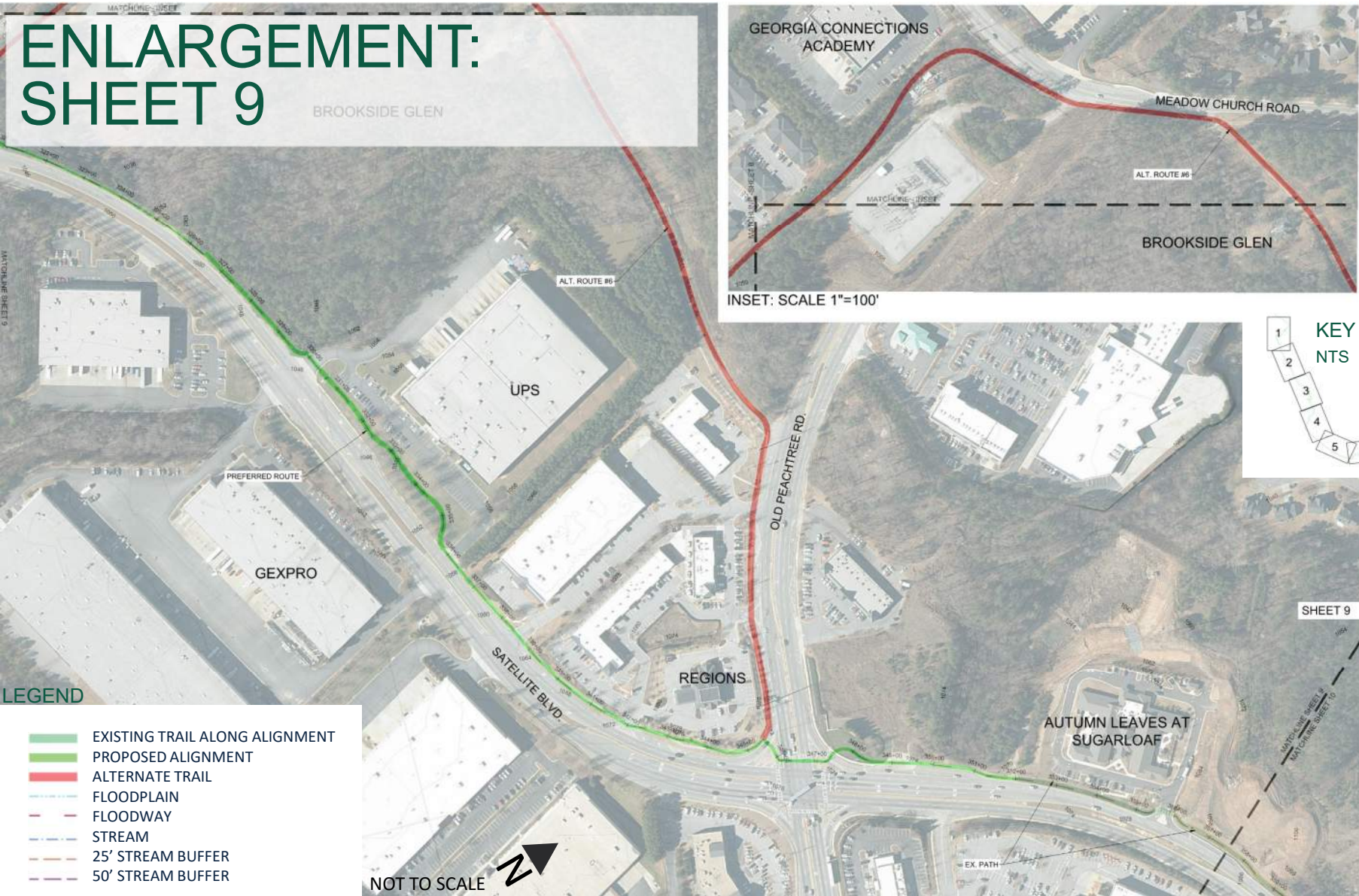
- EXISTING TRAIL ALONG ALIGNMENT
- PROPOSED ALIGNMENT
- ALTERNATE TRAIL
- FLOODPLAIN
- FLOODWAY
- STREAM
- 25' STREAM BUFFER
- 50' STREAM BUFFER

ENLARGEMENT: SHEET 8



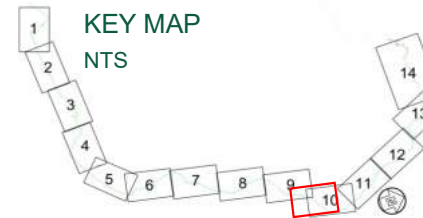
ENLARGEMENT: SHEET 9

BROOKSIDE GLEN



- LEGEND**
- EXISTING TRAIL ALONG ALIGNMENT
 - PROPOSED ALIGNMENT
 - ALTERNATE TRAIL
 - FLOODPLAIN
 - FLOODWAY
 - STREAM
 - 25' STREAM BUFFER
 - 50' STREAM BUFFER

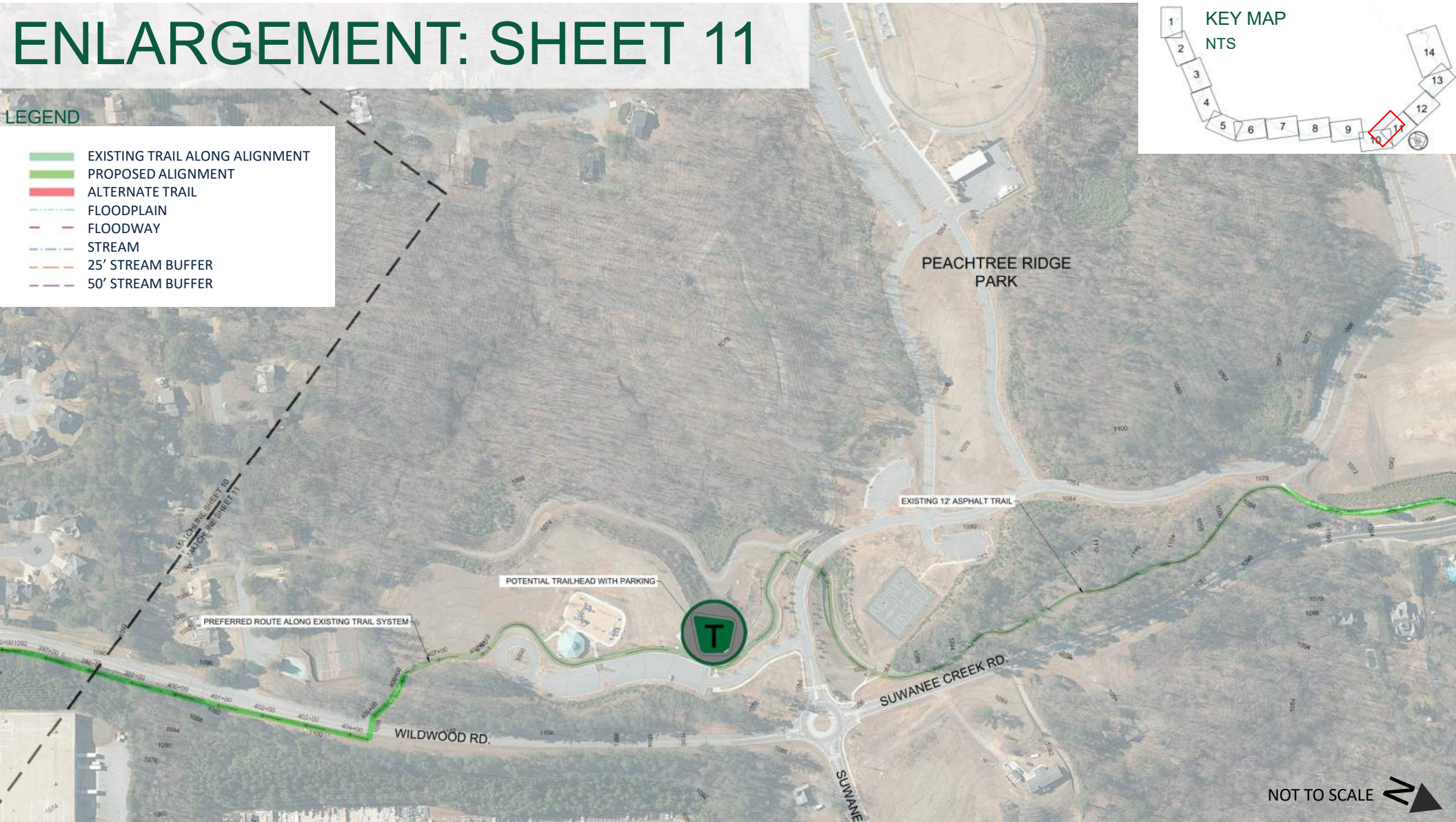
ENLARGEMENT: SHEET 10



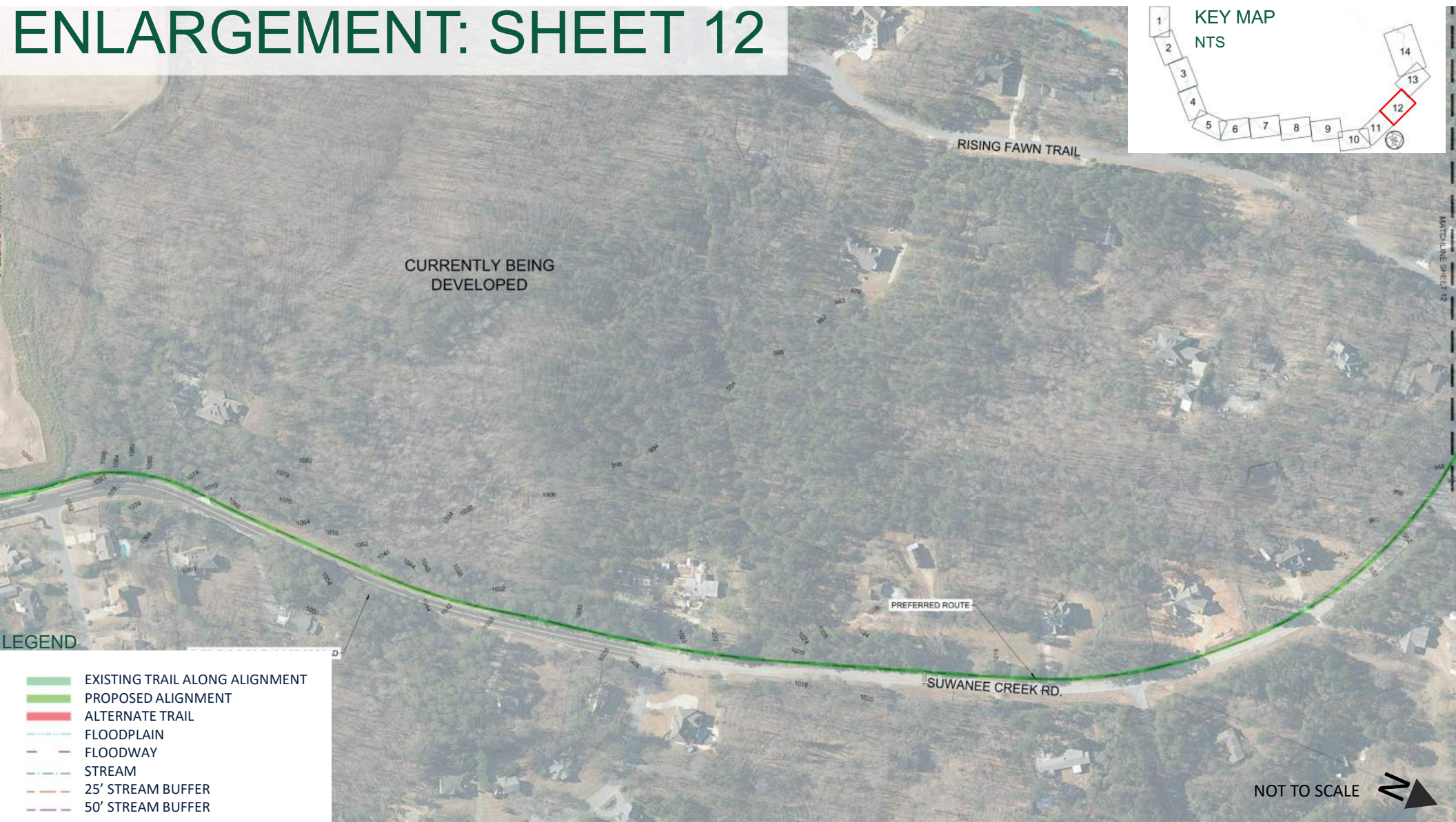
ENLARGEMENT: SHEET 11

LEGEND

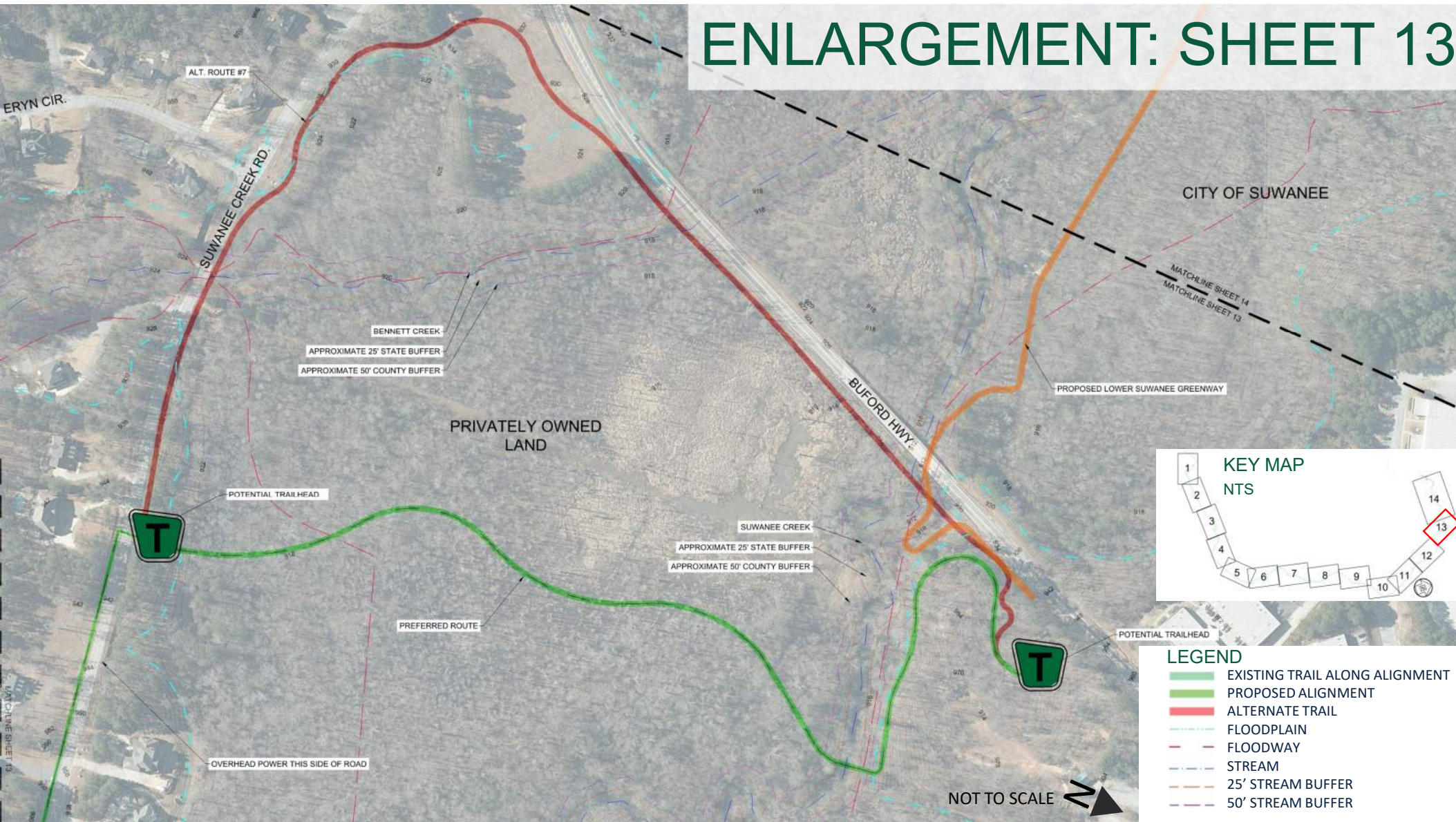
- EXISTING TRAIL ALONG ALIGNMENT
- PROPOSED ALIGNMENT
- ALTERNATE TRAIL
- FLOODPLAIN
- FLOODWAY
- STREAM
- 25' STREAM BUFFER
- 50' STREAM BUFFER

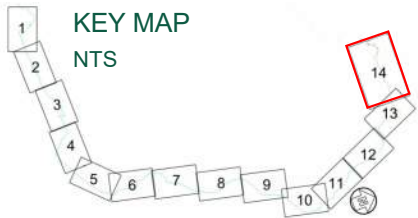


ENLARGEMENT: SHEET 12

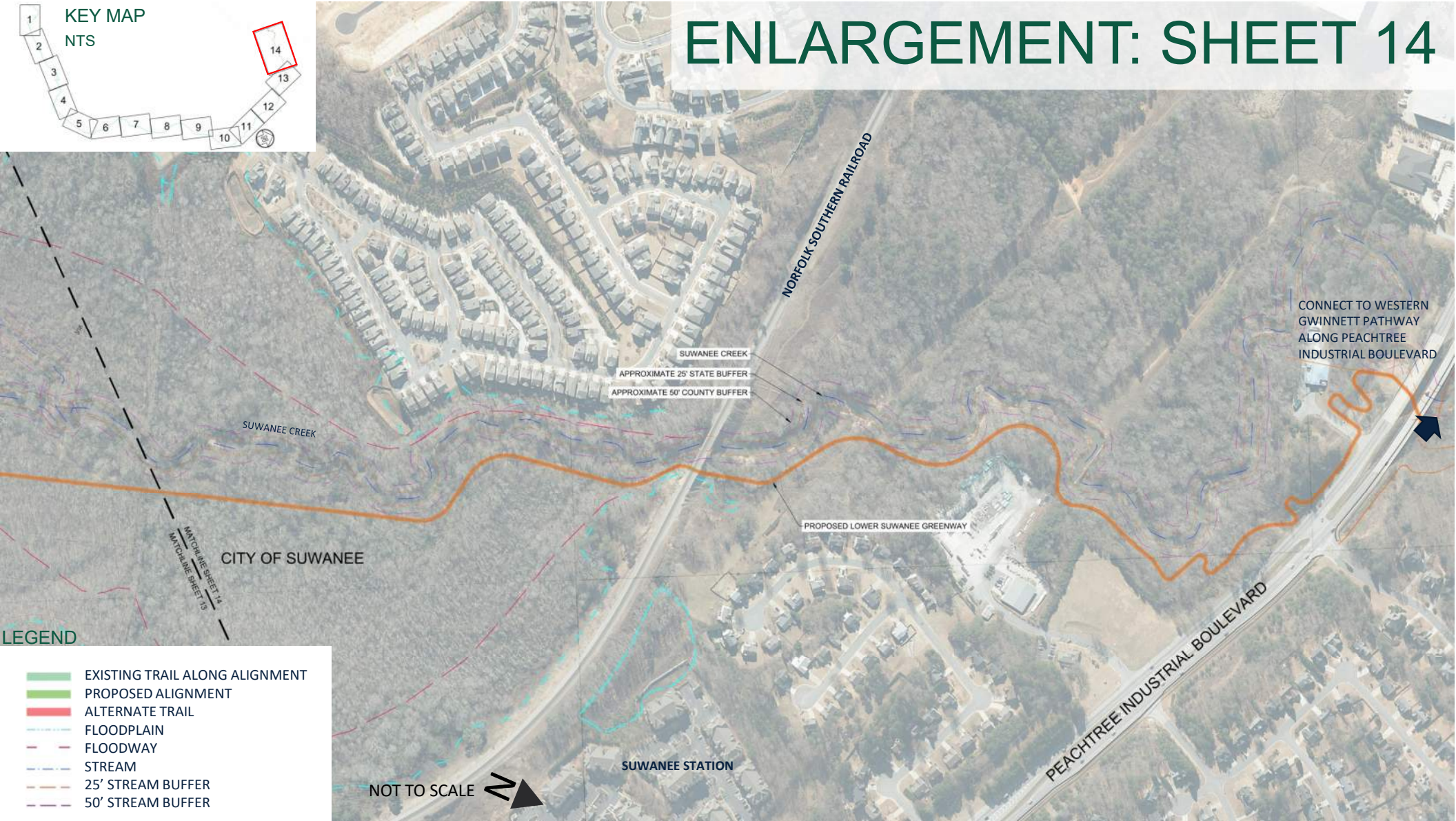


ENLARGEMENT: SHEET 13





ENLARGEMENT: SHEET 14





TRAIL EXPERIENCES/ FEATURES





THE LOOP TRAIL ALONG MCDANIEL FARM

- *COURTESY OF GWINNETT TRAILS,
RENDERING BY KIMLEY-HORN*



SIDE PATH TRAIL

- *BUFFERED BY GRASS PLANTING STRIP*



**BOARDWALK: UPPER SUWANEE
GREENWAY BELOW WOODWARD MILL
ROAD**

- *COURTESY OF GWINNETT TRAILS,
RENDERING BY KIMLEY-HORN*





OFF-ROAD TRAIL: HARBINS GREENWAY

- COURTESY OF GWINNETT TRAILS,
RENDERING BY KIMLEY-HORN



TRAIL REST AREA

- TANYARD CREEK TRAIL,
ATLANTA, GA



TRAILHEAD WITH PICNIC TABLE + RESTROOM

- WOLF CREEK GREENWAY,
GERMANTOWN, TN



ROAD CROSSING: PIEDMONT PATHWAY AT DACULA ROAD

- *COURTESY OF GWINNETT TRAILS, RENDERING BY KIMLEY-HORN*



WAYFINDING: DIRECTIONAL, ROADSIDE, MILE MARKERS

- *COURTESY OF GWINNETT TRAILS, IMAGE BY KIMLEY-HORN*





Pigeonhole^{Live}

Ask your questions: www.pigeonhole.at/THELOOP

Scan me!



Go to

www.pigeonhole.at

Enter passcode

THELOOP

Join Q&A

**The Loop Trail Study
Q&A**

Pigeonhole Live



SESSION

The Loop Trail Study Q&A

Feel free to submit your questions for the panel! You can also vote for the questions that interest you. Popular questions with high votes will be addressed first. If we are not able to get to all questions we will post all responses to Q+A after the meeting.



Pigeonhole Live



ADDITIONAL QUESTIONS

- Ability to post questions through Pigeonhole will be available for next 14 days (through Aug 9)
- Email Andrea Greco with Pond: grecoa@Pondco.com
- Email Greg Smith with Gwinnett DOT
greg.o.smith@gwinnettcountry.com
- Check back at gwinnetttrails.com under 'Loop Study'

SCHEDULE

• 2018:	Gwinnett Trails Countywide Master Plan	
• Summer 2019:	Loop Trail Kickoff	
• Fall 2019:	Core Team Meeting	
• Jan 2020:	Stakeholder Meeting #1	
• 02/25/2020:	Core Team Meeting #2	
• 5/20/2020:	Stakeholder Meeting #2	
• 7/27/2020	Public Meeting #1	Present Alternative Alignments
• Late Sept 2020	Core Team Meeting #3	Draft Study
• Oct/Nov 2020	Stakeholder/Public Mtg #2	Draft Study
• Dec 2020	Core Team Meeting #4	Final Study