



# EDUCATOR GUIDE

B2Anywhere.com  
EHCEducation@GwinnettCounty.com  
770.904.3500



# WELCOME

Our educational programs provide a unique atmosphere for learning and environmental stewardship across the county. Every student benefits from our long-standing relationships with both public school systems, numerous private schools, and homeschool groups in Gwinnett.

We strive to transform the concepts of science and history into interactive, learn-by-doing experiences. Exposure to nature, history, and alternative surroundings allows students to see and embrace critical academic concepts in different ways. With hikes, outdoor classrooms, historic sites, and a state-of-the-art laboratory, experiences with us are unique.

## TABLE OF CONTENTS

Planning Your Visit	3
<b>QUESTS   TWO-HOUR, GUIDED ROTATIONS</b>	
Information	4
Forest Quest (K-5) and Museum Quest (K-12)	5
<b>EXPLORATORY FIELD STUDIES   TWO-HOUR, UNIT-FOCUSED INSTRUCTION</b>	
Information and Pre-K	6
Kindergarten – First Grade	7
Second Grade – Third Grade	8
Fourth Grade – Fifth Grade	9
Middle School	10
High School	11
Teacher Survey Comments	12
<b>OUTREACH   ONE-HOUR, GUIDED ACTIVITY BROUGHT TO YOU</b>	
Information and pricing	13
Pre-K – Second Grade	14
Third Grade – Seventh Grade	15



Building Brains Anywhere is a countywide Shirley Carver Miller Learning Initiative. It aims to serve children, parents, and caregivers in Gwinnett by providing safe and engaging enrichment opportunities. B2 Anywhere works with various partners such as Gwinnett County Public Schools and the Gwinnett Building Babies' Brains Initiative.



### GSE/AKS Standards Based Learning

All K-12 quest, field study, and outreach programs are aligned with current Georgia Standards of Excellence and the Gwinnett County Academic Knowledge and Skills Curriculum. The programs also support the Georgia Career Clusters Pathways, particularly in agriculture, food, and natural resources; energy; science, technology, engineering, and math.



# PLANNING YOUR VISIT

Our top-quality field study programs are popular, and dates fill quickly. Reservations are required. Most programs involve two hours of instruction but can be customized to fit each school's needs.

## STEP ONE: Contact us to choose date and location

[EHCEducation@GwinnettCounty.com](mailto:EHCEducation@GwinnettCounty.com) | 678.765.4680

## STEP TWO: Choose your exploratory field study

Once a date is selected and approved, choose your program(s). Return the completed reservation form, and our knowledgeable staff will take it from there. We strive to meet the needs of all visitors; please include any special accommodations at this time.

## STEP THREE: Pay the deposit

Program dates are secured once the \$50 deposit is received. A final invoice with the balance due will be provided on the day of your visit. The balance is due upon arrival.

## Cancel/Reschedule:

- If a program is unexpectedly rescheduled, every effort will be made to accommodate. However, calendars for our programs fill quickly; available dates will be limited.
- Programs will be rescheduled due to inclement weather/forecast only if there is a school system closure. If rescheduling is not possible, the deposit will be refunded.

## PROGRAM FEES

Grade Level	Fees per student/chaperon
Pre-K – High School	\$8
High School Lab	\$9

*A \$20 per group, per day non-Gwinnett fee will apply. Teachers/staff (with a valid school ID) accompanying students on field studies are free!*

## LOCATIONS

- Elisha Winn Site, Dacula
- Environmental & Heritage Center, Buford
- Freeman's Mill Park, Lawrenceville
- Isaac Adair House, Lawrenceville
- Lawrenceville Female Seminary, Lawrenceville
- McDaniel Farm, Duluth
- Yellow River Post Office Site, Lilburn

*Some programs are available at additional park locations, weather and date permitting.*

## VIRTUAL FIELD STUDIES

High-quality programming on your devices!

**\$100/class** (\$20/non-Gwinnett resident fee applies)

[EHCEducation@GwinnettCounty.com](mailto:EHCEducation@GwinnettCounty.com)

678.765.4680

## BEFORE YOUR VISIT:

- Minimum class size is 15 students; maximum daily program capacity varies.
- Programs are held rain or shine; please ensure everyone dresses for the weather.
- Wear sneakers; open-toe shoes are not advised since we're connecting with nature.
- Chaperones must pay through the school prior to arrival.
- Chaperones are to actively assist; other children/babies are not permitted.

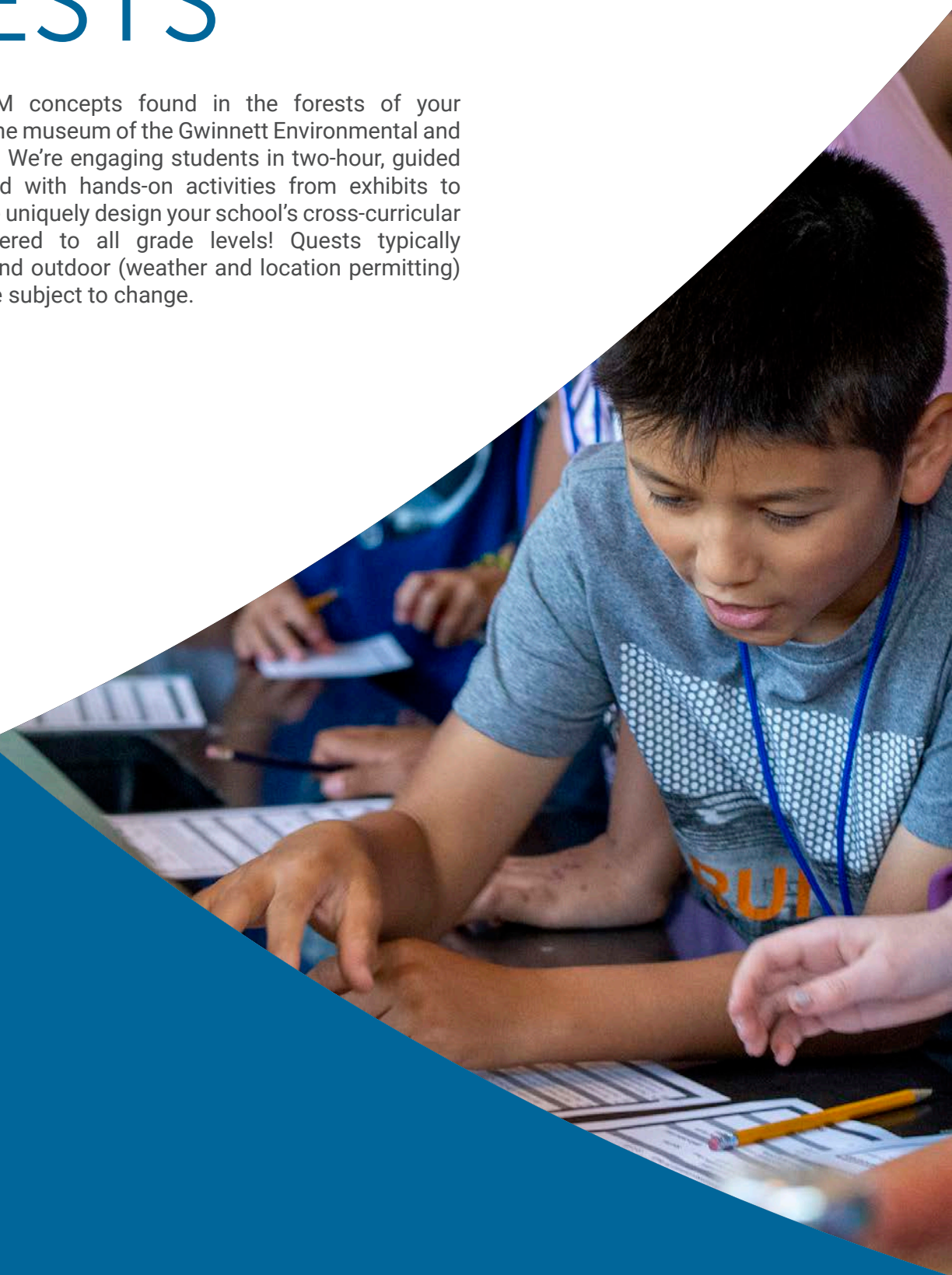
## DURING YOUR VISIT:

- Teachers must accompany their class.
- Late arrival may reduce program time.



# QUESTS

Discover STEAM concepts found in the forests of your local park or in the museum of the Gwinnett Environmental and Heritage Center. We're engaging students in two-hour, guided rotations packed with hands-on activities from exhibits to ecosystems! We uniquely design your school's cross-curricular experience, catered to all grade levels! Quests typically involve indoor and outdoor (weather and location permitting) activities but are subject to change.



# FOREST QUEST

Guided two-hour outside (weather permitting) curriculum for grades K-5 that include the following activities:

## Georgia Native Plants and Animals

Explore the forest and discover the plants and animals that live in the Piedmont region and how they are connected to each other.

## Animal Adaptations

Enjoy a hands-on experience with skins, skulls, and scat to identify physical adaptations that help our forest friends survive in their habitat.

## Trees

An up-close study of the forest gives students a better understanding of how trees grow, what they provide, and why we must protect this natural resource.

## Rocks and Soil

Get down and dirty in the soil and learn about the importance of rocks and soils found in Georgia.

## Hydrology and Stream Exploration

Visit a natural stream, discover the life and energy in its waters, and connect this wet habitat to the forest and its surrounding ecosystem.

# MUSEUM QUEST

Guided cross-curricular rotations at the GEHC involving the following stations for grades K-12.

## Blue Planet Theater

Get immersed in this multi-sensory presentation as you discover the wonders and importance of water!

## Chesser-Williams House

Discover the art and science of historic preservation, restoration, and conservation. Enjoy an interpretation of daily life on a mid-to-late 1800s Georgia farmstead.

## STEAM Lab

A hands-on exploration of a variety of exciting STEAM activities.

## Green Building Tour

Discover this unique, environmentally built museum. Get an up-close look at Gwinnett's first LEED-certified building featuring current technology and innovative engineering concepts.

## Outdoor Interpretive Hike

Enjoy a guided walk along the trails and uncover the dynamic environment that plants and animals call home (weather permitting).

## WATERWAYS Exhibit

Explore how humankind interacted with the environment throughout history, and discover how the land and water shaped Georgia's earliest inhabitants – the Cherokee, Muscogee, and early settlers. Learn how our environment and natural resources impact us today.

# EXPLORATORY FIELD STUDY

Our engaging educators make science and social studies come alive in indoor and outdoor (weather permitting) settings. Each exciting, two-hour, guided program provides grade-specific curriculum and an in-depth look at a particular unit of study.

*Unless otherwise noted, programs take place at the Gwinnett Environmental and Heritage Center.*

## PRE-K

Programs are aligned with the Georgia Early Learning Development Standards for early childhood education. Outdoor experiences are an integral part of each program.

### Forest Detectives

Explore the trees of our forest ecosystem! Investigate what creatures live among the branches and how they depend on the trees for their survival, and dig for clues with a soil exploration in this mostly outdoor program. *This program is also offered at McDaniel Farm Park or at a park location near you (weather and location permitting).*

### Wild About Weather

Our junior meteorologists journey through a weather adventure to explore clouds, storms, and sunny days, and go on a cloud hike and enjoy educational play! Plus, they create clouds and have interactive water cycle fun in the Discover H2O exhibit.

### Georgia Animals In My Backyard

Touch and feel skins and skulls and learn how to protect our local animal friends. Students discover the differences between local forest animals, enjoy interactive games, and have a playful visit with our resident turtles!

### Exhibit Explorers

Little explorers guide through the exhibits to discover hidden wonders and adventures into the past. They venture outdoors to learn about native plants, animals, and insects. This program may include the STEAM lab exhibit.



# KINDERGARTEN

## Exploring Plants and Animals: Wild and Wonderful Georgia

A hands-in-dirt investigation reveals the forest is full of life! Interactive animal grouping games, hands-on exploration with a vast skins collection, and a difference/similarity discovery walk on the trails give the opportunity to observe and ask questions about plant and animal life in our forest. *Also offered at a park location near you (weather and location permitting).*

## Beneath Our Feet: Exploring Rocks and Soil

Dig into the rocks and soil of the forest! Interactive games and exploration have those small kindergarten hands in the soil and mud as we observe, touch, and weigh nature's wonders beneath our feet.

## Exploring Centuries of Childhood: Then and Now\*

Discover an authentic 1800s homestead to compare and contrast a child's life in the past to current day. Sort and classify objects found throughout the centuries, enjoy hands-on activities, and play games highlighting clothing, toys, houses, chores, and school in the 1800s and today. *This program is also offered at Lawrenceville Female Seminary.*

## Living Life on the Farm: Exploring Rocks and Soil | McDaniel Farm Park

Travel back in time and discover the important role of a farmer. Through fun, outdoor, hands-on activities, students contrast living and non-living items in their role as helpers at McDaniel Farm.



# FIRST GRADE

## Everything Needs Water

Explore the basic needs of plants and animals thriving in Georgia forests. Take a water walk to help hydrate one of the many living things that depend on this precious natural resource for survival. Participate in a What Belongs In Our Stream activity to drive home the importance of protecting and preserving streams, and enjoy visiting Discover H2O exhibit and viewing the Blue Planet movie!

## Light, Sound, and Living Things

It's an exciting day of discovery with hands-on activities and a guided walk in the forest. Students investigate and evaluate the many ways Georgia animals and plants use light and sound to meet basic survival needs.

## Environmental Heroes: Teddy Roosevelt and GW Carver\*

Discover the legacy of Carver's contributions to agriculture and scientific research through hands-on gardening as students discuss farming techniques like crop rotation, cover crops, and composting for healthy soil. Explore some trails to become a conservationist like Roosevelt and understand the importance of native plants and trees. Hear stories of the famous Teddy Bear and learn about Georgia's bears. *This program is also offered at McDaniel Farm Park.*

## Early American Heroes: Franklin and Jefferson\*

Get immersed in the everyday lives of American heroes who had a passion for science and the environment. Educators in period attire lead students on a respect for the environment hike and use artifacts and replicas to demonstrate the differences/similarities of everyday life from then to now. Students experience colonial games and chores, explore some of Franklin's inventions, and discover Jefferson's contributions to American government and science.

## Weather and Climate

Identify different forms of precipitation, investigate cloud identification, and explore how native Georgia animals react and adapt to different weather situations. Experiment with several weather instruments, visit the Discover H2O exhibit, and identify current weather conditions on an interpretive hike.

## Magnetism Matters

It's magnetic! Through interactive games and activities, investigate the strengths and everyday uses of magnets, learn why iron is important in daily diets, discover how magnets are used for navigation, and view the earth's magnetic field through the eyes of a bird. Also, visit the STEAM lab.

# SECOND GRADE

## Exploring Environmental Changes

Investigate how to protect local ecosystems and the impact weather, air, land, and water pollution have on the environment. Discover the necessity of community involvement in protecting ecosystems through a forest and river clean-up simulation, and experience the multisensory Blue Planet Theater!

## A Pollinator's Life: Bees, Bats, Birds, and Butterflies

Investigate life cycles and diversity of life through the honeybee, bat, hummingbird, and butterfly, which are important pollinators that support agricultural and natural systems. Through exploration centers, learning activities, and a guided walk in the forest, discover the benefits of these animals and the impact of environmental changes.



## Matter Matters

Explore the three states of matter, compare and contrast the different properties of matter, and learn how solids, liquids, and gases really do matter in nature. Program includes an exploratory hike and a visit to the Discover H2O exhibit.

## Georgia's First People

Through various STEAM centers, experience the daily life of some of our state's first people and compare it to modern living. Create a model of a waddle and daub home using local and natural resources. Examine the forest on an outdoor hike while learning about the Cherokee and Muscogee and how they adapted to and were influenced by their environment. *This program is also offered at McDaniel Farm Park.*



# THIRD GRADE

## Pollution and Solutions

Hands-on investigations, activities, and a walk through the forest to the stream allow students to explore different forms of pollution, determine what is causing these strains on our planet, and formulate solutions to pollution! This program includes a visit inside the Discovery Dome.

## Mineral Mania

What's the difference between rocks and minerals? How are minerals transformed by water and wind? How do soil and properties shape daily life? Many questions are answered as students get their hands on marvelous minerals, investigate the physical attributes of rocks, soil, and minerals, go on an exploratory trail hike, and map the mineral resources of our state.

## Native Knowledge and Colonial Impact

Compare and contrast how American Indian cultures and early colonists interacted with different environments to produce food, clothing, and shelter. Explore an ancient rock shelter and native plants used by Georgia's first inhabitants. An in-depth discovery of the Chesser-Williams House, colonial games, and tools allow students the opportunity to examine everyday life and the survival resources of early Georgians.

## Adapting to Georgia's Habitats and Regions\*

Through hands-on outdoor adventures, investigate and differentiate a wide variety of plants, animals, and habitats that are unique to each region of Georgia. Research the physical features of some important Georgia animals and uncover how these adaptations allow them to survive and thrive. A hands-in-mud activity provides evidence of how animals depend on their adaptations, and an exploratory forest hike gives the opportunity to discover unique plants found in the Piedmont.



# FOURTH GRADE

## Extreme Weather

Meteorology is better understood after experiencing Force Five weather inside the Discovery Dome. Interactive stations engage students with weather equipment, a cloud study, weather scenarios that reinforce frontal systems, and more. A visit to the Discover H2O exhibit along with an exploratory nature hike give students an up-close view of how water and weather shape our world.



## STEAM Exploration: Simple Machines, Physical Geography, and the American Revolution\*

Discover the impact of physical geography, math, and engineering on key battles. Emphasizing simple machines and period technology, hands-on experiences replicate the activities that groups like the Daughters of Liberty and tradespeople adopted to support the call for independence. Educators in period attire share accounts of the civic contributions of John Adams, Thomas Jefferson, and Benjamin Franklin. Explore how period scientific concepts influenced the drive for independence and participate in a lively debate. *This program is also offered at Lawrenceville Female Seminary.*

## What's Eating You? Ecosystems, Food Chains, and Food Webs

Go on a guided forest walk to explore the nearby creek critters and uncover evidence of the aquatic food chain. Discover how diverse plant and animal ecosystems affect the flow of energy that's required to keep the systems balanced and how pollution can disrupt this delicate system. *This program is also offered at McDaniel Farm Park or at a park location near you (weather/location permitting).*

## Get in Gear: Simple Machines at Freeman's Mill

Explore the historic Freeman's Mill and discover the symphony of simple machines that allowed local farmers to grind their corn into meal and feed their families. Students learn how people harnessed the energy of water and used technology from the time period to perform work. They also see how Freeman's Mill became a thriving commercial center and a hub of social activity for the community.



# FIFTH GRADE

## Harmful and Beneficial Microbes

Become lab scientists and experience an up close and personal understanding of the differences between harmful and beneficial bacteria. A soil hike on our trails and a microscopic study enrich awareness of where bacteria can be found and the good and not-so-good work it can do!

## Classification: Plants and Animals of Georgia

On a guided forest walk discover plants and animals and their importance and dependency on each other. Using tools and technology, dig into the scientific importance of soil. An interactive activity with our vast skins, skulls, and scat collection provides an understanding of the grouping and classifications of living things. *This program is also offered at McDaniel Farm Park or at a park location near you (weather/location permitting).*

## World War I Impacts Georgia: Trenches, Tactics and Technology

Explore the causes and impacts of World War I through the lens of technology, gardening, and food preservation. Using primary sources, investigate life on the home front and in the trenches, the role and contributions of the United States in this world wide conflict, food conservation, and more. Educators in period attire guide students to create synthetic rubber in the lab and closely analyze various harmful and beneficial microbes that impacted soldiers and those at home. Interact with special floor maps to understand the various nations involved in the conflict.

## Brother, Can You Spare a Dime? | McDaniel Farm Park

Discover how the McDaniel family survived the challenges of the Great Depression. Participate in farm life through hands-on activities that allow students to work with cotton, experience chores, see the life of a sharecropper, and more.

# MIDDLE SCHOOL

## Meteorology and Hydrology

Student meteorologists collect data using a variety of scientific instruments to predict tomorrow's weather. Build a hurricane and experience the thrill of being inside one while viewing the Discovery Dome's Force Five movie. Hands-on exploration in the Discover H2O exhibit and a guided trail hike provide an up-close experience on how water shapes the landscape and how climate change dramatically affects wildlife. **GSE/AKS – 6<sup>th</sup> grade science**

## Soil Rocks!

Journey through the rock cycle to explore some of Georgia's rocks, minerals, and soil and discover how natural processes change them. Test minerals to understand their physical properties and how these properties translate to rocks, and then explore outside to identify stages of the rock cycle up-close. See how soil supports our natural and built environments while collecting and analyzing soil samples. A soil hike provides a hands-in-the-dirt understanding of the factors necessary for soil formation and the importance of soil conservation. **GSE/AKS – 6<sup>th</sup> grade science**



## Everyday Ecology

Dig into the interactions that make earth so dynamic! Model the defining factors of global biomes and track carbon through an ecosystem. Venture into our temperate deciduous forest to reveal local food webs and symbioses and discover the unique adaptations of aquatic macro-invertebrates in our streams and how they respond to human activity. *Elements of this program can be combined with elements from the Classification program. This program is also offered at McDaniel Farm Park or at a park location near you (weather/location permitting).* **GSE/AKS – 7<sup>th</sup> grade science**

## Classification and Diversity

Through a guided walk in the forest, students explore the taxonomy and reproductive strategies of local flora and fauna. Students collaborate to build a classification model, and identify skulls and leaves using dichotomous keys. Dissection and microscopic study of both a flower as well as an animal friendly frog model allow students to better understand the structure and function of each. **GSE/AKS – 7<sup>th</sup> grade science**



## Waste Water Adventure: In With The Dirty, Out With The Clean

A guided walking tour of the F. Wayne Hill Water Resource Center reveals the mechanics of water treatment including how gravity is used as a physical force to clean water. Experience the transformations of matter and energy throughout the treatment process and understand that energy and nutrients are recovered from what is flushed down the drain! *\*Transportation is needed from GEHC to the F. Wayne Hill Water Resources Center.* **GSE/AKS – 8<sup>th</sup> grade science**

## Phenomenal Physics

In this energy-filled experience, discover the physics within our green building, explore natural forces at work in the forest, experiment with forms of energy and energy transformations, and actively engage in the physics found within many childhood games. **GSE/AKS – 8<sup>th</sup> grade science**

# HIGH SCHOOL

## Wastewater Adventure: In With The Dirty–Out With The Clean

A guided walking tour of the F. Wayne Hill Water Resource Center reveals the many processes wastewater travels through as it is cleaned. Investigate the physical, chemical, and biological methods of treatment at this state-of-the-art facility and understand that energy and nutrients are recovered from what is flushed! *\*Transportation is needed from GEHC to the F. Wayne Hill Water Resource Center.*

**GSE/AKS – Biology and Environmental Science**

## Green Physics

This three-hour, high-flying adventure explores the physics concepts within the GEHC’s green building. Students embark on a forces of nature forest walk and soar to new heights with Treetop Quest to analyze the physics of an aerial adventure course. *\*Please contact us for details on additional pricing for this field trip.* **GSE/AKS – Physics**



## Forest Adventure

Gather data from the trails to identify and discuss local plant diversity. Observe the stages of succession throughout the forest and learn how land development impacts these stages. An investigation into plant and animal interdependence creates a lasting impression of how forest change affects the delicate balance of nature. Explore the environmental impact of non-native species and take a hands-on approach to restore balance in our Georgia habitat. Students make connections with the natural world and get their hands dirty by experiencing the science in the forest! **GSE/AKS – Biology**

## Stream Adventure

Investigate the health of a stream by performing various water quality tests including temperature, dissolved oxygen, and pH. Explore and identify macroinvertebrates collected from the stream, getting a snapshot of the stream’s health and an understanding of the relationship between water quality and a thriving forest. Team up to identify six different nonpoint source pollutants, brainstorm how they entered the stream, and theorize what impact pollutants have on that ecosystem. *Stream Adventure and Wastewater Adventure can be combined for an additional charge.* **GSE/AKS – AP Chemistry, Chemistry, AP Environmental Science, Environmental Science, Biology, and Microbiology**

## Green Building Quest: Understanding Historic and Sustainable Architecture

Take an in-depth look at the characteristics of historic and modern green building techniques, and discover how these thoughts and ideas changed over time. Examine first-hand examples of nineteenth century architecture and explore the unique features of Gwinnett’s first green building. Learn how historic buildings and landscapes examine themes of daily life – transportation, communication, economics, food-ways, conflict, shelter, recreation, art, and more. Discover the latest technologies and future career opportunities in these fields.

**GSE/AKS – Cross-curricular standards**



## Biology Labs

Labs require additional time. Programs can be customized depending on teacher’s needs.

**GSE/AKS – Biology and Environmental Science | \*9<sup>th</sup> Grade Biology**

Photosynthesis Leaf Disc Assay Investigation\*

Animal Behavior Investigation\*

Dissolved Oxygen and Aquatic Primary Productivity

# TEACHER SURVEY COMMENTS

## See what other teachers are saying!

"I was very impressed with the quality of the program and the fact that the staff went above and beyond to ensure that they taught our students exactly what they needed to know for their Project Based Learning."

"This was so closely aligned with our studies in science. It was wonderful!"

"This was the easiest and least stressful field trip I have ever coordinated. Absolutely the best field trip!"

"As an educator, it was wonderful to feel less stressed on a field trip. You took care of everything! GEHC is a perfect place with so many opportunities for learning directly coordinated with Georgia standards."

"We were beyond impressed with the efficiency, attention to detail, preparedness, knowledge, and enthusiasm that contributed to a wonderful morning of learning. Our students remained completely engaged and loved all of the activities."

"This was an amazing field trip. Thank you so much for focusing on standards that are difficult to explain in the classroom at times!"



# OUTREACH

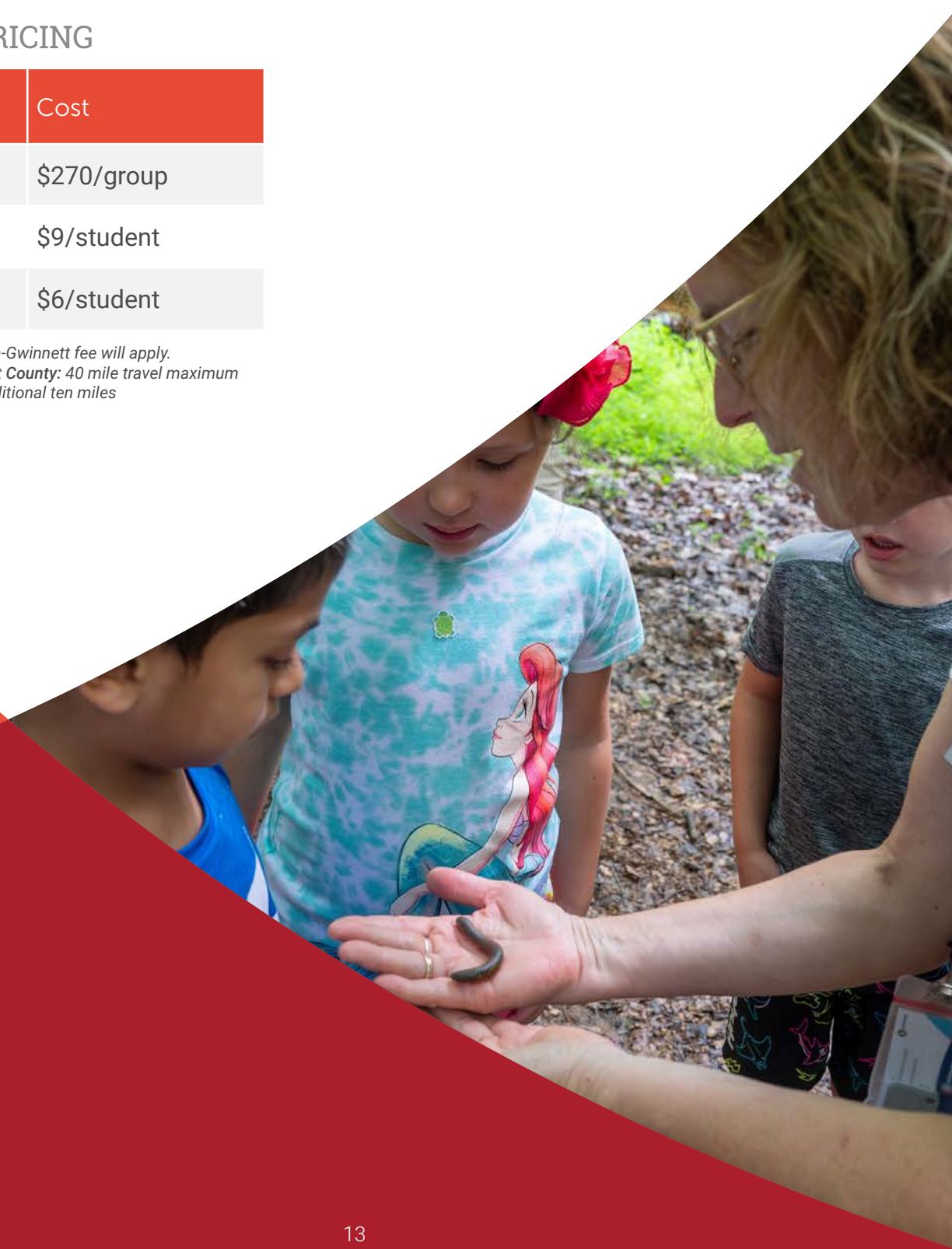
## OUR EDUCATORS BRING THE ACTIVITIES TO YOU!

Visits can be customized to fit your school's needs, and our science and social studies programs provide students with high-quality, high-interest instruction while providing teachers with the convenience of a unique field study in their own classroom.

### PROGRAM PRICING

Number of students	Cost
up to 29	\$270/group
up to 89	\$9/student
90 or more	\$6/student

*A \$20 per group, per day non-Gwinnett fee will apply.  
Travel fees outside Gwinnett County: 40 mile travel maximum  
\$20/first ten miles • \$10/additional ten miles*



## PRE-K

Aligned with the Georgia Early Learning Development Standards for early childhood education.

### Georgia Animals In My Backyard

Through hands-on investigation with our skins and skulls collection, uncover how Georgia's forest friends look and behave differently. Interactive games and a playful visit with our resident turtle show animals' needs and help students appreciate the role they play in protecting our wildlife.



### Bees, Bears, and Breakfast

Black bear, black bear where can he be? Our educators share stories, songs, games, and fun bear facts with your students. It's an exciting adventure as you get to know North America's smallest bear!

## KINDERGARTEN

### Exploring Plants, Animals, Rocks and Soil

Through investigative plant and animal activities and hands-on exploration of animal skins, explore the relationship between plants, animals, rocks, and soil.

### Exploring Centuries of Childhood: Then and Now

Compare and contrast a child's life in the past to current day. Sort and classify objects found throughout the centuries, enjoy hands-on activities, and play games highlighting clothing, toys, houses, chores, and school in the 1800s and today.

## FIRST GRADE

### Everything Needs Water

Through hands-in-dirt adventures and team activities, discover the basic needs of plants and animals in Georgia forests. Participate in a What Belongs in Our Stream activity to drive home the importance of protecting and preserving our streams!

### Early American Heroes

Get immersed in the everyday lives of Benjamin Franklin and Thomas Jefferson, who had a passion for science and the environment. Educators in period attire demonstrate several of Franklin's inventions and highlight gardening practices conducted at Jefferson's family home. Use artifacts and replicas to understand the differences and similarities of everyday life between then and now.

## SECOND GRADE

### Georgia's Native People Knowledge and Know-How

Discover the tools and technology the Cherokee and Muscogee utilized in their daily lives. Hear stories that explore Native American understanding of the environment and explore their cultural impact and contributions.



### A Pollinator's Life: Bees, Bats, Birds, and Butterflies

Investigate life cycles and the diversity of life through the honeybee, bat, hummingbird, and butterflies, our most important pollinators that support agricultural and natural systems. Through hands on learning activities, discover the benefits of these animals and how environmental changes impact life cycles.

## THIRD GRADE

### Ecosystems and Animal Adaptations

Discover the importance of animal adaptations for survival during this nonstop adventure including a migration survival flight and an interactive experience with skins, skulls, and scat discovery tables!

### Native American Knowledge and Know-How

Explore Native American understanding of the environment through stories. Understand their cultural impact and contributions to Georgia and the United States. Discover the tools and technology various Native American groups utilized in their daily lives.

## FOURTH GRADE

### What's Eating You? Ecosystems, Food Chains, and Food Webs

Uncover how diverse plant and animal ecosystems affect the flow of energy required to keep the systems balanced and how pollution can disrupt this delicate system.

### STEAM Exploration: Simple Machines and the American Revolution

STEAM concepts were crucial factors leading to America's victory in the Revolution. Educators in period attire demonstrate simple machines and period technology. Hands-on experiences replicate activities groups like the Daughters of Liberty and tradespeople adopted to support the call for independence.



## FIFTH GRADE

### World War I Impacts Georgia: Trenches, Tactics and Technology

Educators in period attire explore the causes and impacts of World War I on Georgia through technology and food preservation. Interact with special floor maps to understand the various nations involved in the Great War. Analyze various harmful and beneficial microbes that impacted soldiers and those at home and discover new technologies that emerged from the conflict.

### Classification Station!

Through hands-on discovery and teamwork, develop a model that illustrates how plants and animals are sorted into nine classification groups, use scientific tools to investigate the physical characteristics of each group, and role play scenarios that demonstrate the differences between inherited versus acquired traits.

## SIXTH GRADE

### Meteorology and Hydrology

Learn how meteorologists and hydrologists work together to predict tornadoes and hurricanes and how they prepare communities for these natural disasters. Using various scientific instruments, collect data and make predictions for future weather patterns.



## SEVENTH GRADE

### Animal Friendly Frog Dissection

Jump into the fascinating frog world. Utilizing animal-, student-, and teacher-friendly models, perform basic frog dissection.

Explore the taxonomy of various frog species native to Georgia. Study prepared slides under microscopes to dive deep into the frog life cycle.



# G.R.E.A.T. LITTLE MINDS BOOK EXCHANGE

Take a book, leave a book.

Gwinnett Reading Exchange and Art Transforms Little Minds are small book exchanges located throughout Gwinnett to help a child discover the love of reading in a fun and interactive way!

Visit [B2Anywhere.com](http://B2Anywhere.com) to learn more.

