



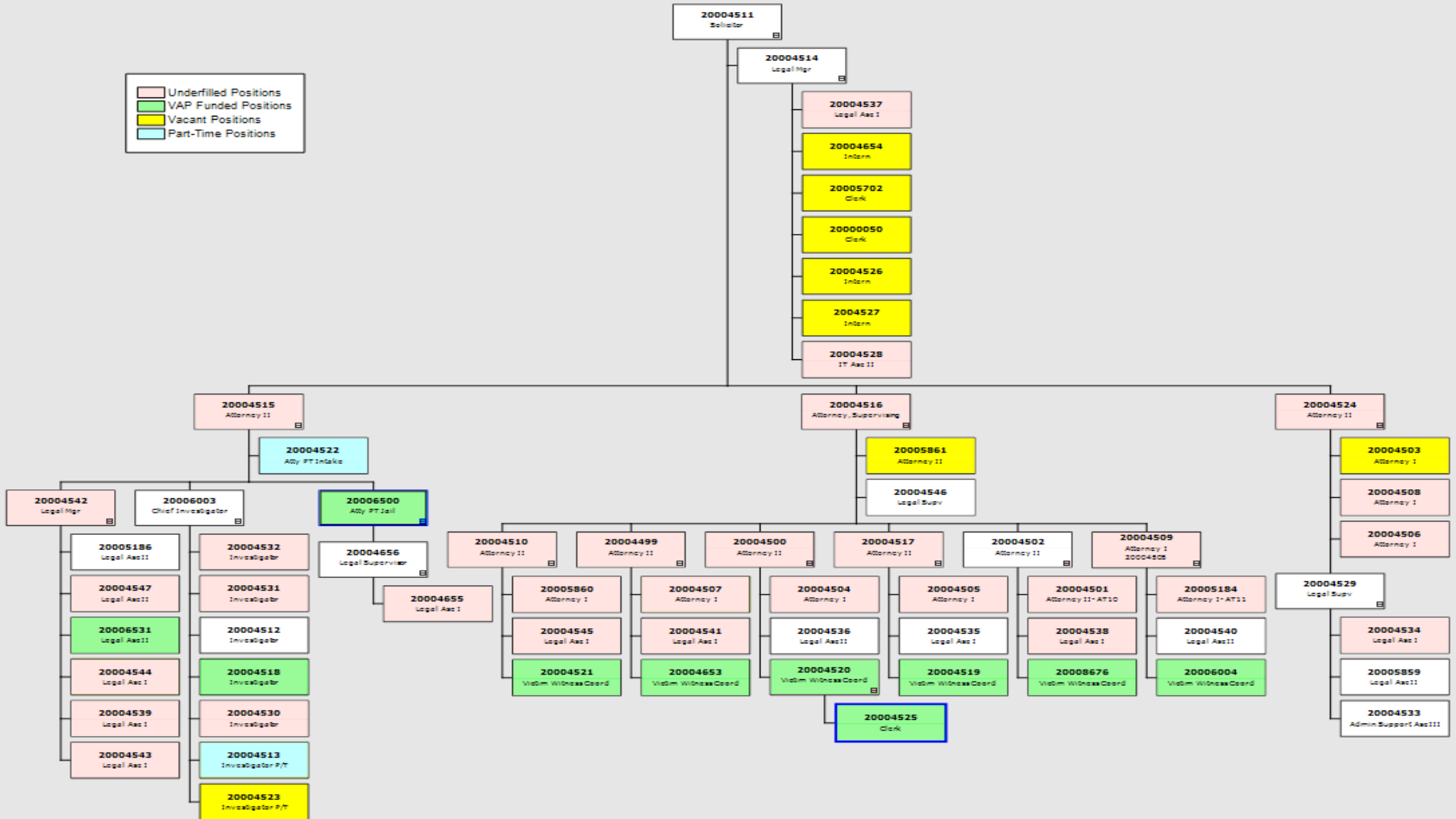
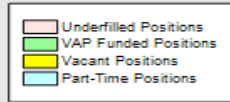
# **Gwinnett County Solicitor's Office**

## **2015 Budget Presentation**

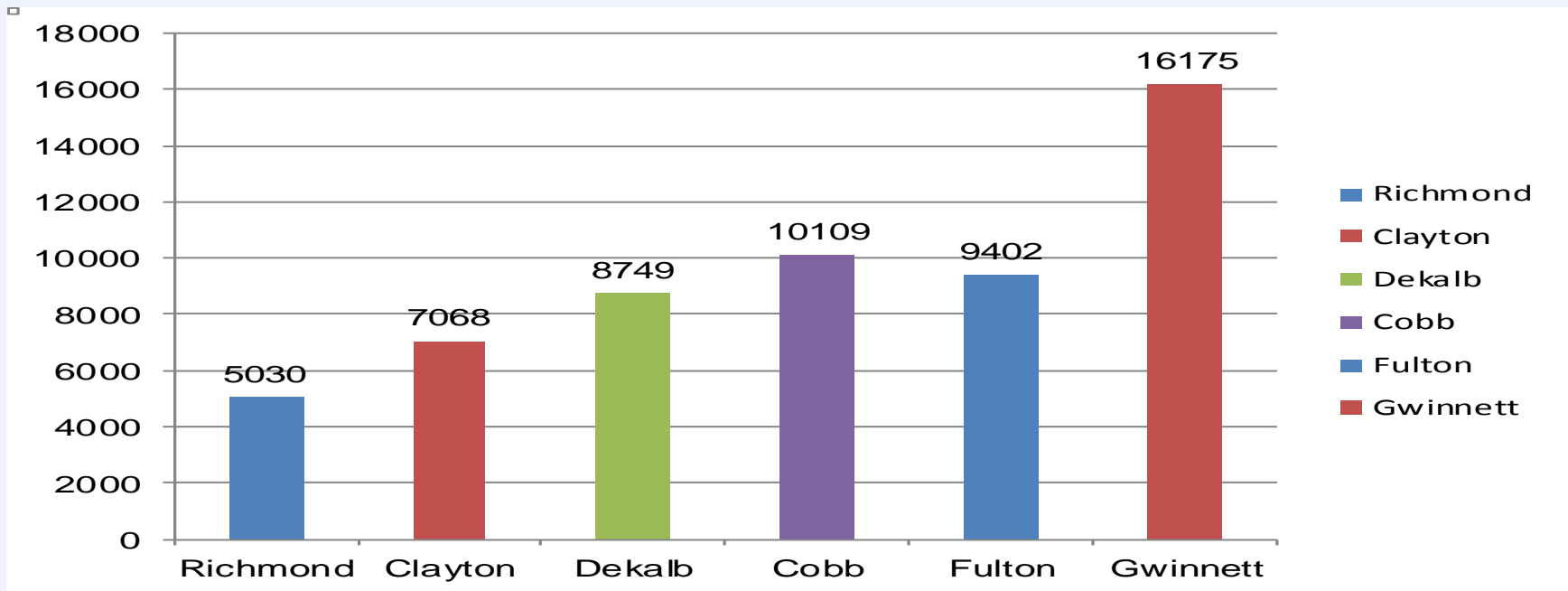
September 4, 2014

# Organization Chart

## SOLICITOR GENERAL'S OFFICE

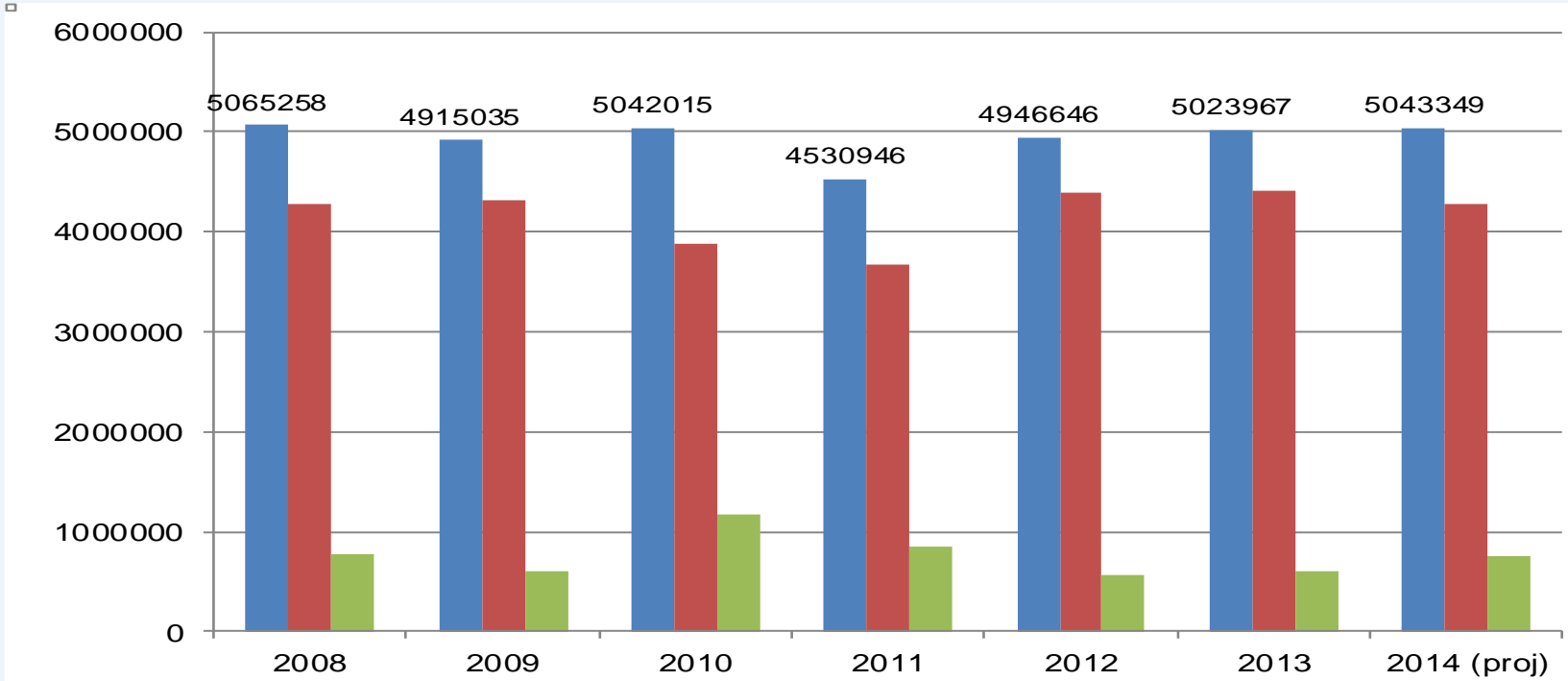


# Staffing Comparison Per Capita



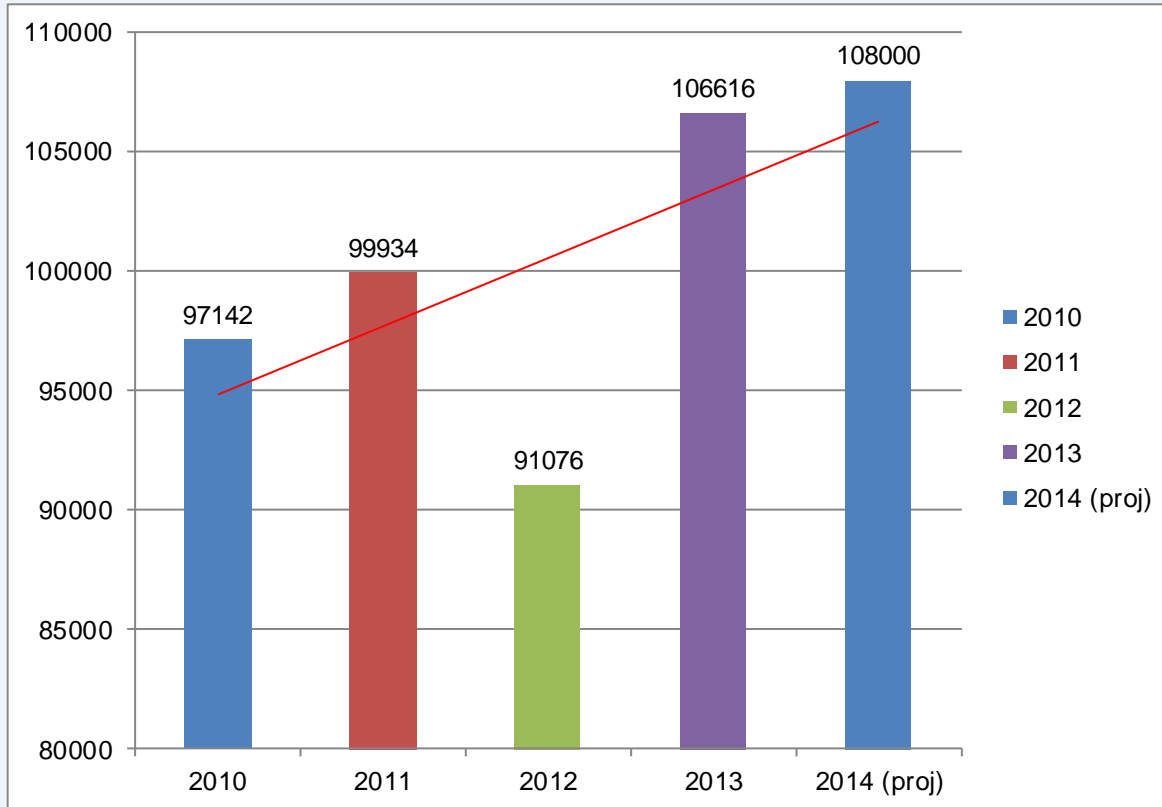
County	Judge	Staff	Population	Per Capita
Gwinnett *	6	51	824,941	16,175
DeKalb	7	80	699,893	8,749
Cobb *	12	69	697,553	10,109
Fulton	10	101	949,599	9,402
Clayton	5	37	261,532	7,068
Richmond	4	40	201,217	5,030

# Overall Budget

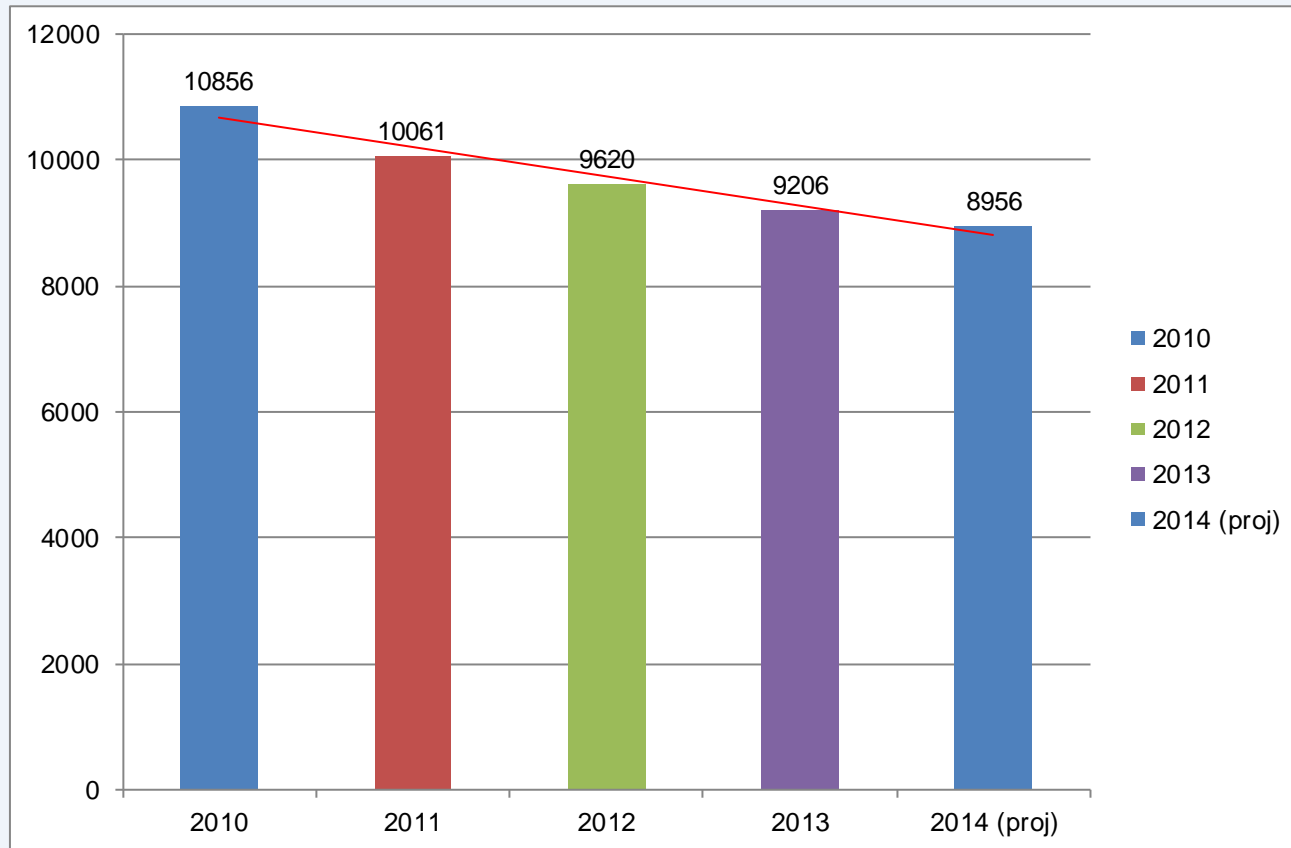


Year	Adopted	Spent	Returned
<b>2008</b>	5,065,258	4,285,423	779,835
<b>2009</b>	4,915,035	4,316,739	598,296
<b>2010</b>	5,042,015	3,874,340	1,167,675
<b>2011</b>	4,530,946	3,676,623	854,323
<b>2012</b>	4,946,646	4,388,223	558,423
<b>2013</b>	5,023,967	4,412,682	611,285
<b>2014 (proj)</b>	5,043,349	4,282,000	761,349

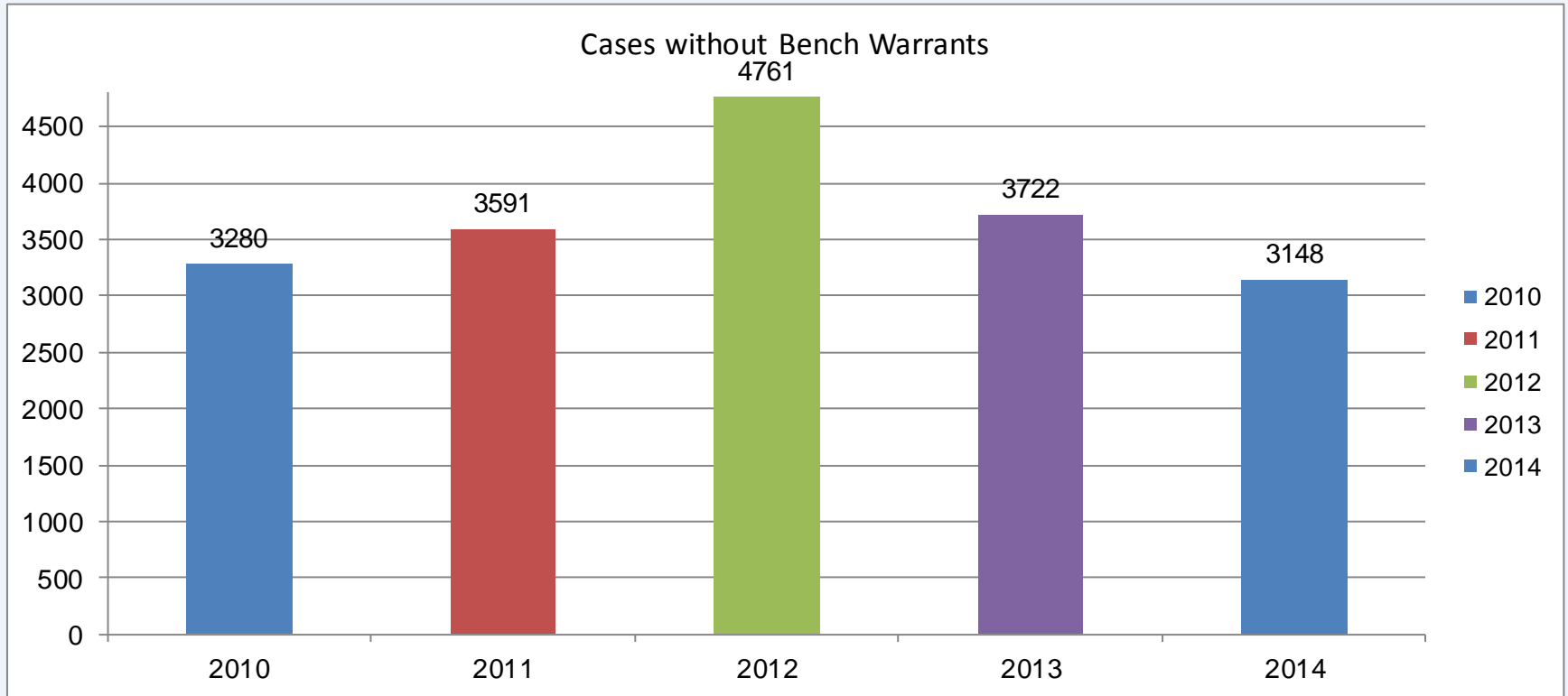
# Recorder's Court Citations Received



# State Court Cases Received

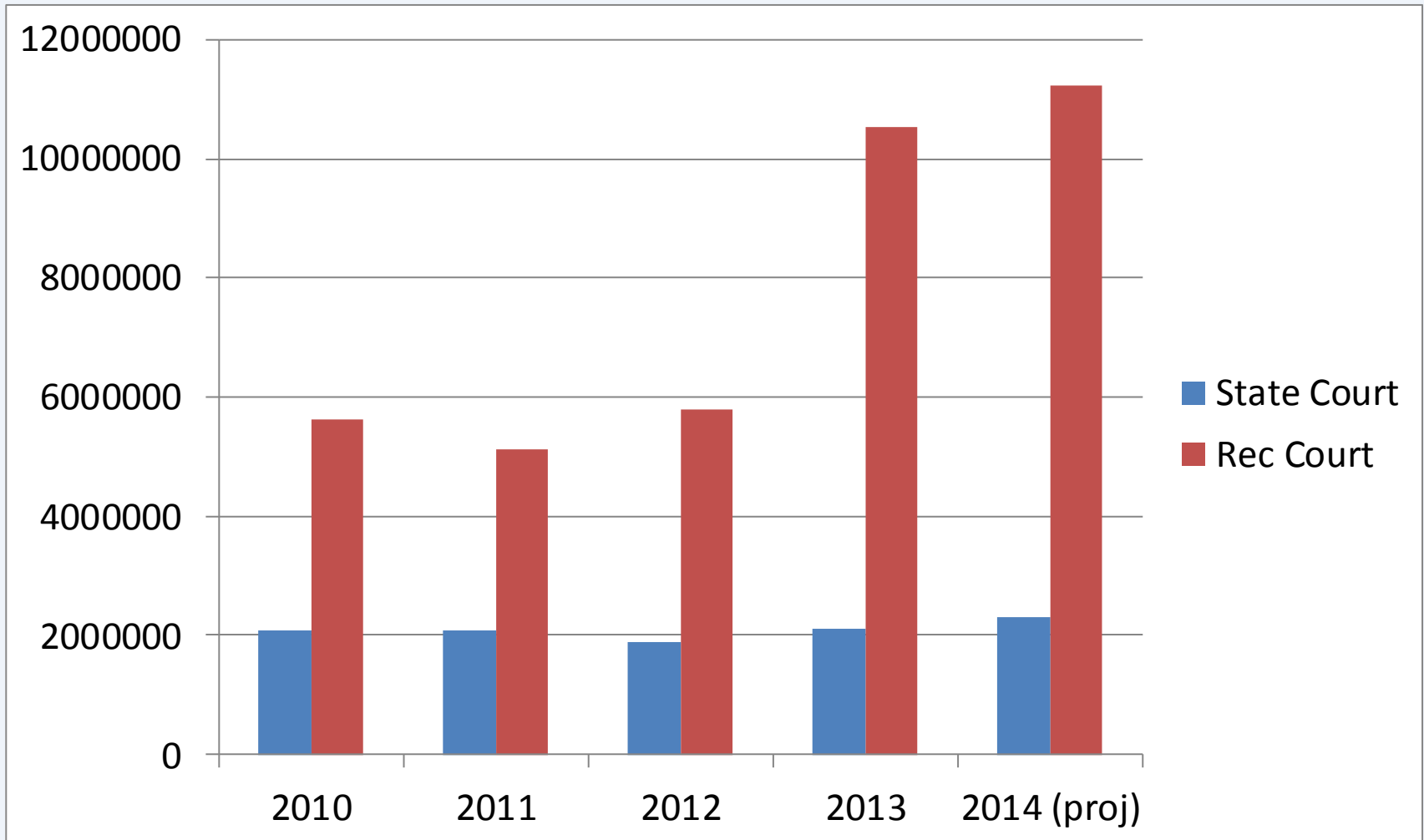


# State Court Pending Cases



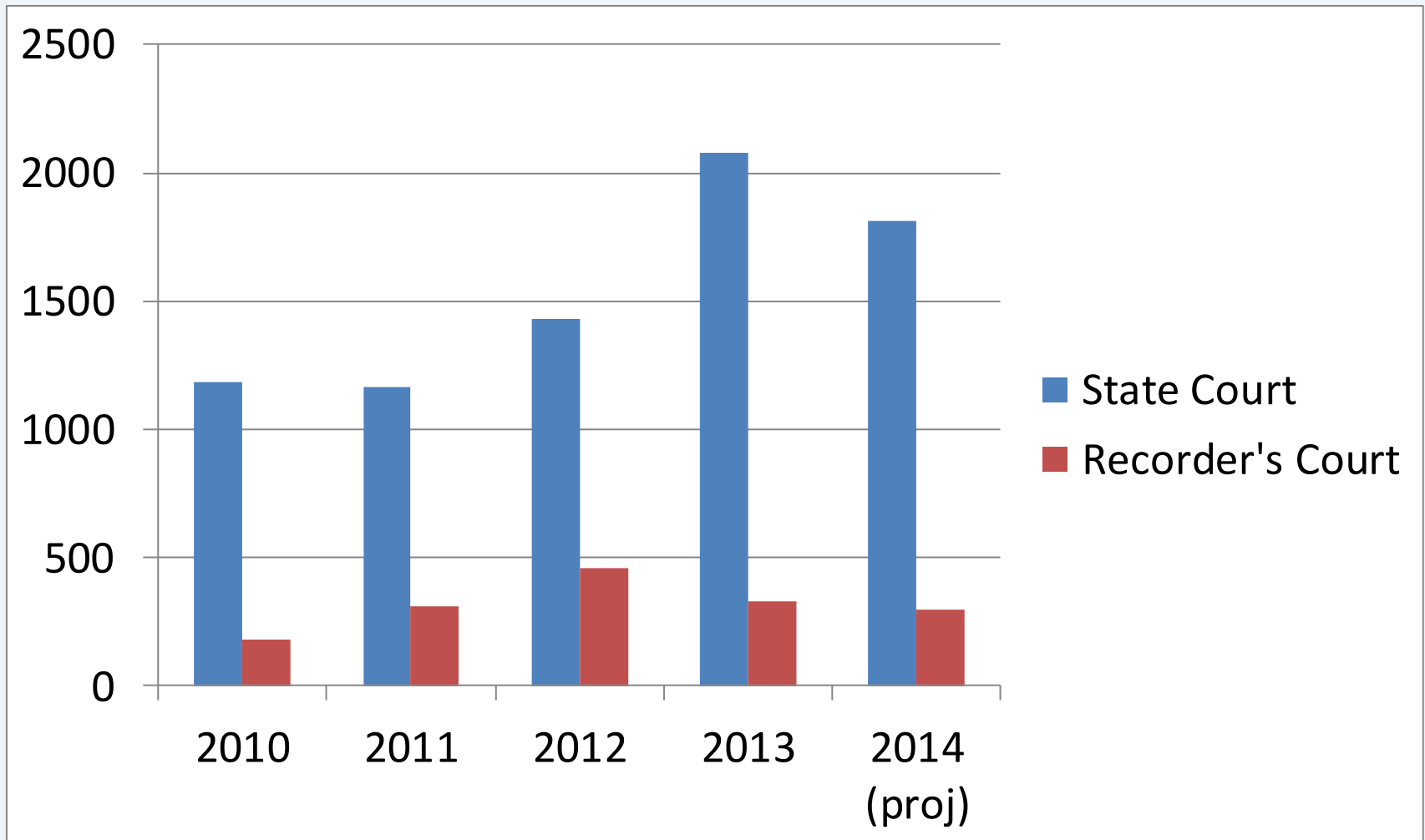
# Fines

## (State Court and Recorder's Court)

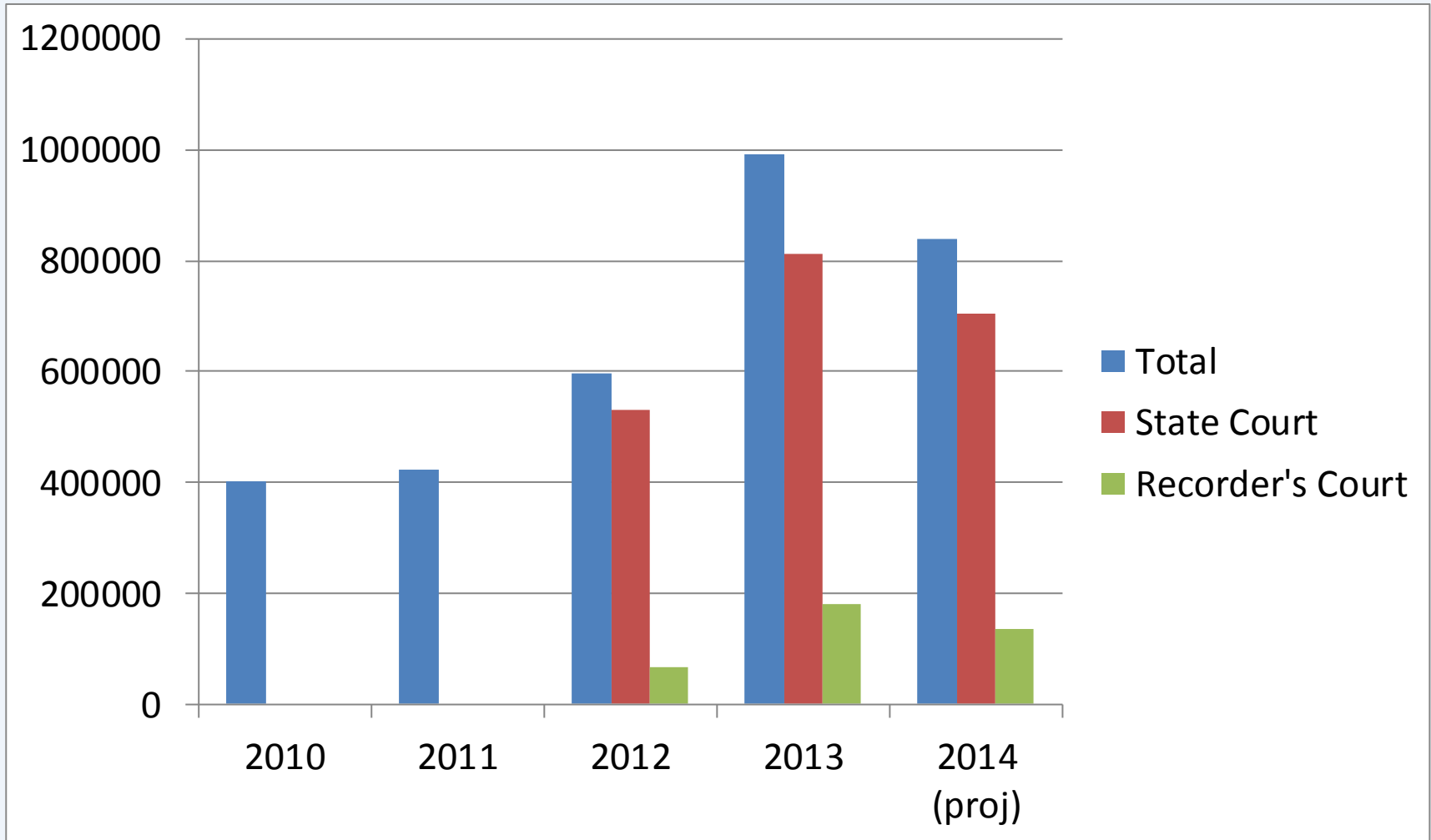




# Pre-Trial Diversion Cases



# PTD Program Fees



# PTD Community Service Hours

