



2018 Budget Request

GWINNETT COUNTY COURTS
SUPERIOR • STATE • MAGISTRATE



Mission Statement

The Georgia Constitution established the Courts of the Gwinnett Judicial Circuit to enforce and administer the laws of this State and of the United States. As a separate and distinct branch of government, the Courts are under a constitutional mandate to resolve disputes and enforce laws in a fair and impartial manner.



Vision

The judges of the Gwinnett Judicial Circuit are committed to professional, efficient, and impartial case resolution.



Superior Court

- Superior Court is a trial court of general jurisdiction.
- The Superior Court has exclusive Constitutional authority over all felony cases, domestic cases, cases involving title to real property and any case seeking equitable relief.
- Criminal cases are prosecuted by the District Attorney's Office.
- The Superior Court also has jurisdiction to correct errors made by lower courts by issuing certiorari; as well as hearing direct appeals from the Board of Worker's Compensation, Department of Labor (unemployment benefits) and lower courts such as municipal courts.



State Court

- State Court is a trial court with limited jurisdiction.
- Cases include misdemeanors as well as traffic violations.
- These cases are prosecuted by the Solicitor's Office.
- Civil cases handled by State Court include torts, contract actions, product liability, medical malpractice, and personal injury.
- State Court can also handle all other civil actions except where the Superior Court has exclusive jurisdiction such as divorce, equity, and title to land.



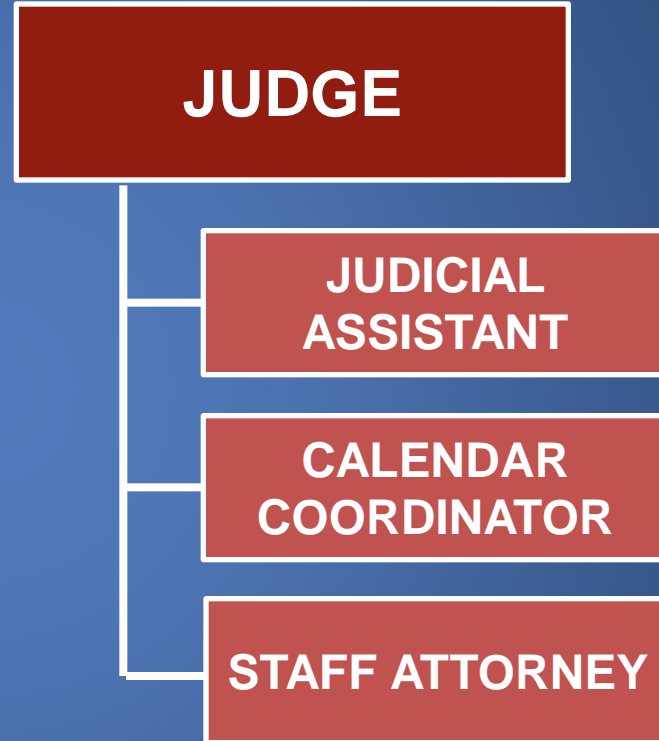
Magistrate Court

- Operates 365 days a year, 24 hours a day
- Directly accessible to the self-represented public and law enforcement
- Jurisdiction:
 - Civil Cases less than \$15,000
 - Garnishment Actions
 - Post-Judgment Collection
 - Landlord/Tenant Cases
 - Family Violence/TPO
 - Abandoned Motor Vehicle Claims
 - Personal Property Foreclosures
 - Arrest & Search Warrants
 - Citizen Warrant Applications
 - First Appearance Hearings



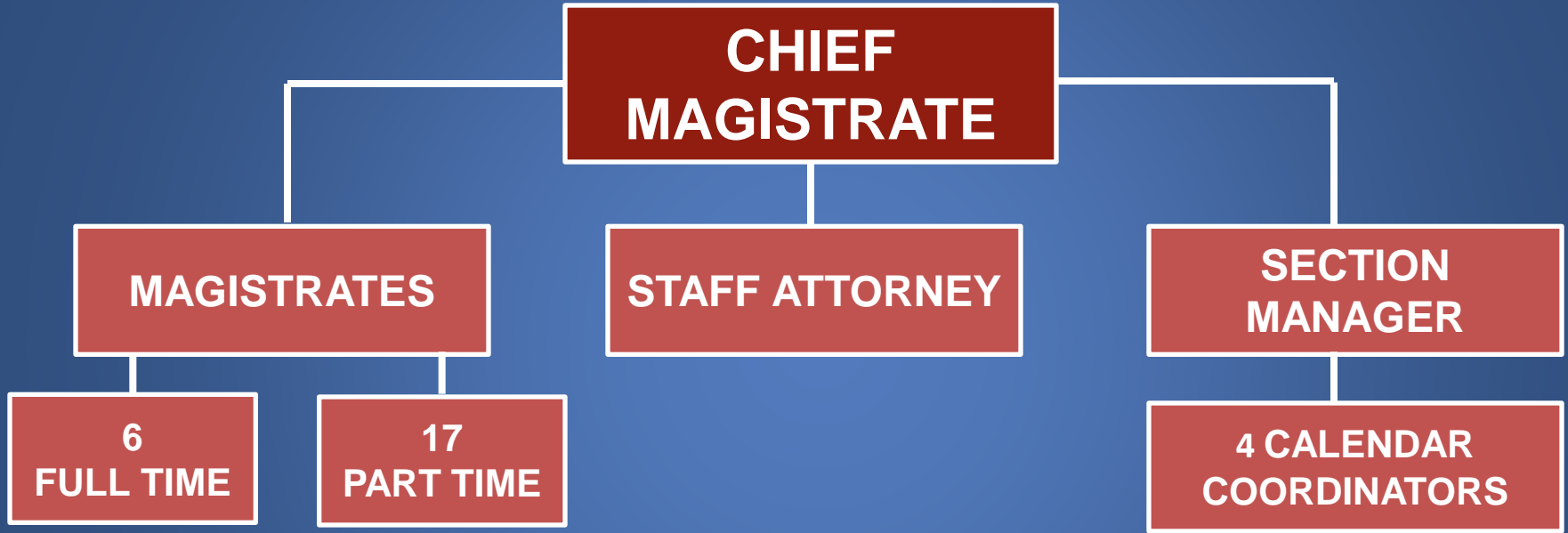
Organization

- Superior Court
 - 10 Judges
 - 30 Staff Members
- State Court
 - 6 Judges
 - 18 Staff Members





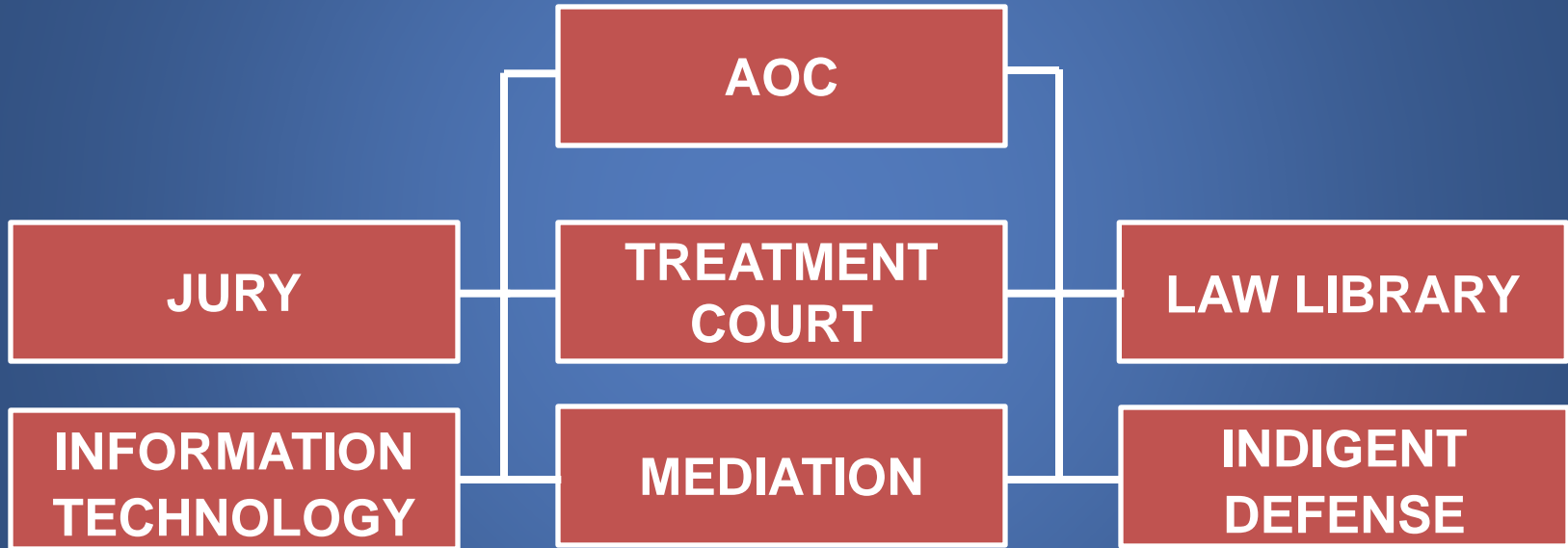
Organization





Organization

SUPERIOR, STATE, MAGISTRATE COURT

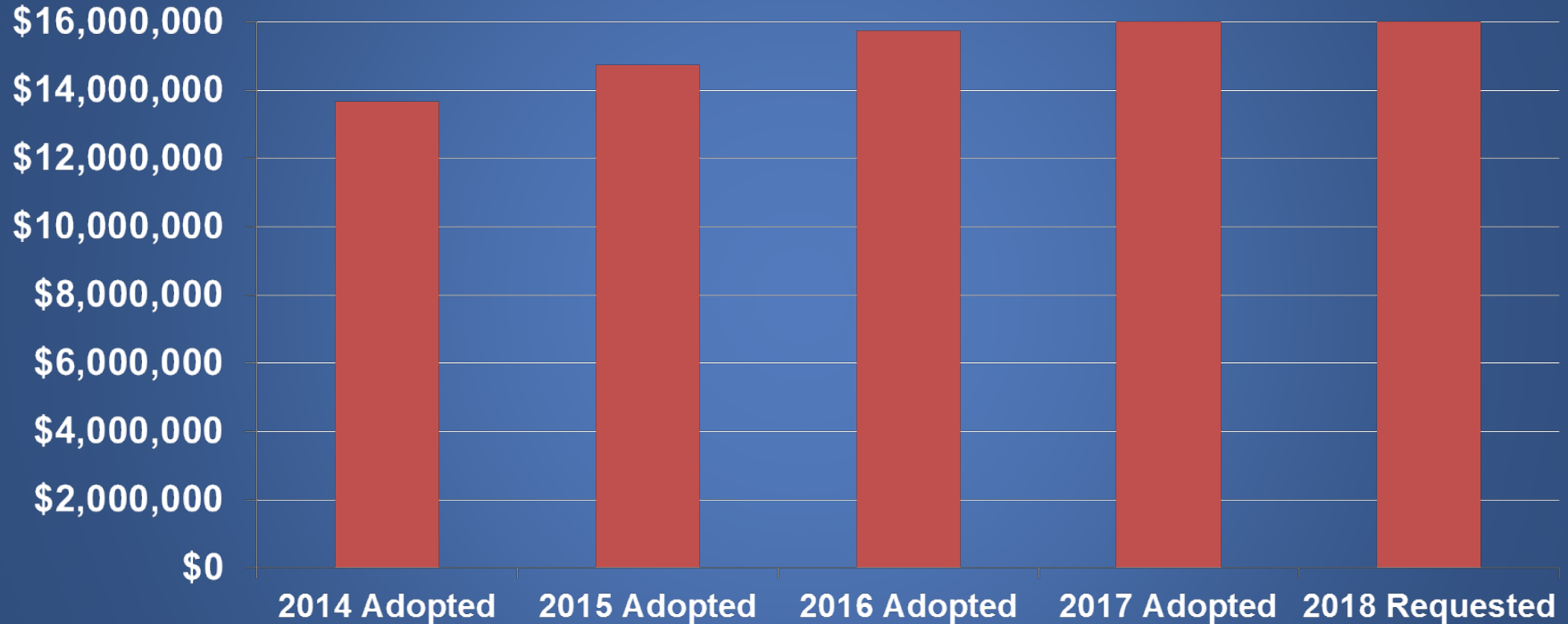




Budget Comparison

Superior-State-Magistrate

General Operating & Personal Services





Budget Comparison

	2017 Budget	2018 Requested	Difference
Personal Services	\$13,426,413	\$13,660,257	\$233,844
General Operating	\$2,713,616	\$2,743,025	\$29,409



Line Item Comparison

	2017 Budget	2018 Request	Difference
Professional Services	\$812,867	\$849,053	\$36,186
License Support Agreement	\$145,005	\$105,885	(\$39,120)
Subscriptions	\$58,970	\$65,000	\$6,030
Industrial R&M Contracted		\$8,400	\$8,400
Rent PC	\$41,662	\$50,280	\$8,618
Telecommunications	\$14,211	\$15,006	\$795
Printing/Binding	\$34,000	\$36,000	\$2,000
Dues/Fees	\$17,500	\$24,000	\$6,500



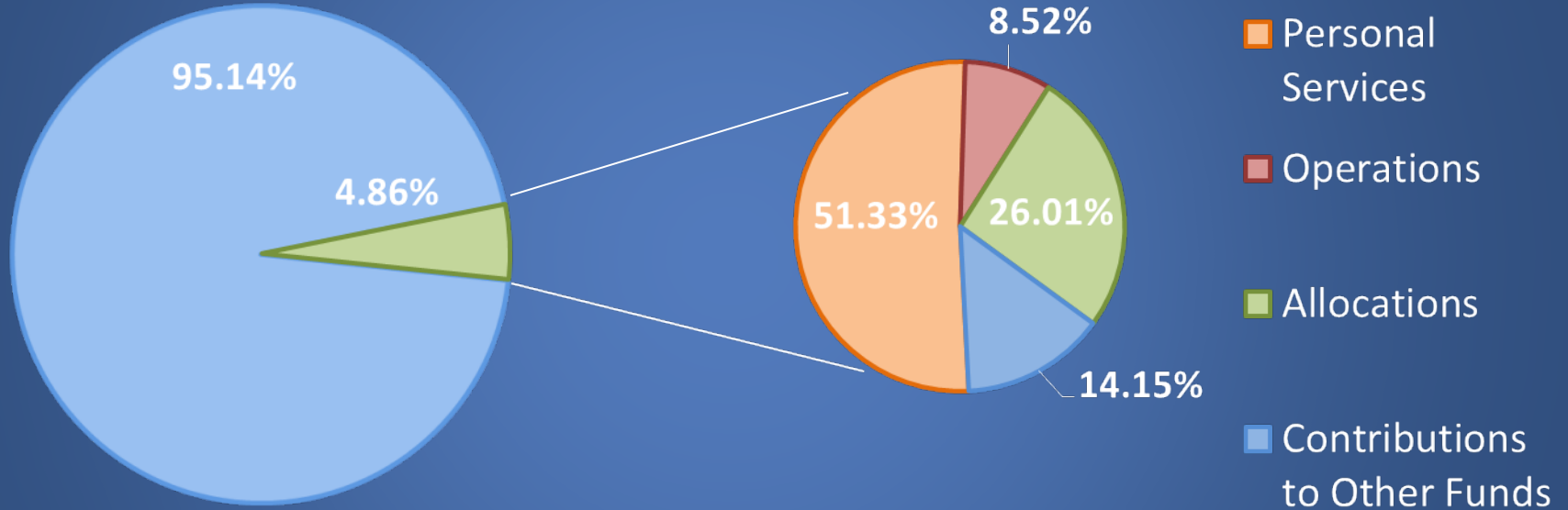
Decision Packages

The Judiciary has no decision packages for the 2018 budget request.



Percentage of Department General Fund Utilized

- County Department General Fund
- Superior, State, Magistrate Courts & AOC





GWINNETT COUNTY COURTS
SUPERIOR • STATE • MAGISTRATE

Questions?