



2019 Budget Request

GWINNETT COUNTY COURTS
SUPERIOR ▪ STATE ▪ MAGISTRATE

Mission Statement



The Georgia Constitution established the Courts of the Gwinnett Judicial Circuit to enforce and administer the laws of this State and of the United States. As a separate and distinct branch of government, the Courts are under a constitutional mandate to resolve disputes and enforce laws in a fair and impartial manner.

Vision



The judges of the Gwinnett Judicial Circuit are committed to professional, efficient, and impartial case resolution.

Superior Court



- Superior Court is a trial court of general jurisdiction.
- The Superior Court has exclusive Constitutional authority over all felony cases, domestic cases, cases involving title to real property, and any case seeking equitable relief.
- Criminal cases are prosecuted by the District Attorney's Office.
- The Superior Court also has jurisdiction to correct errors made by lower courts by issuing certiorari; as well as hearing direct appeals from the Board of Workers' Compensation, Department of Labor (unemployment benefits), and lower courts such as municipal courts.

State Court



- State Court is a trial court with limited jurisdiction.
- Cases include misdemeanors as well as traffic violations.
- These cases are prosecuted by the Solicitor's Office.
- Civil cases handled by State Court include torts, contract actions, product liability, medical malpractice, and personal injury.
- State Court can also handle all other civil actions except where the Superior Court has exclusive jurisdiction such as divorce, equity, and title to land.

Magistrate Court

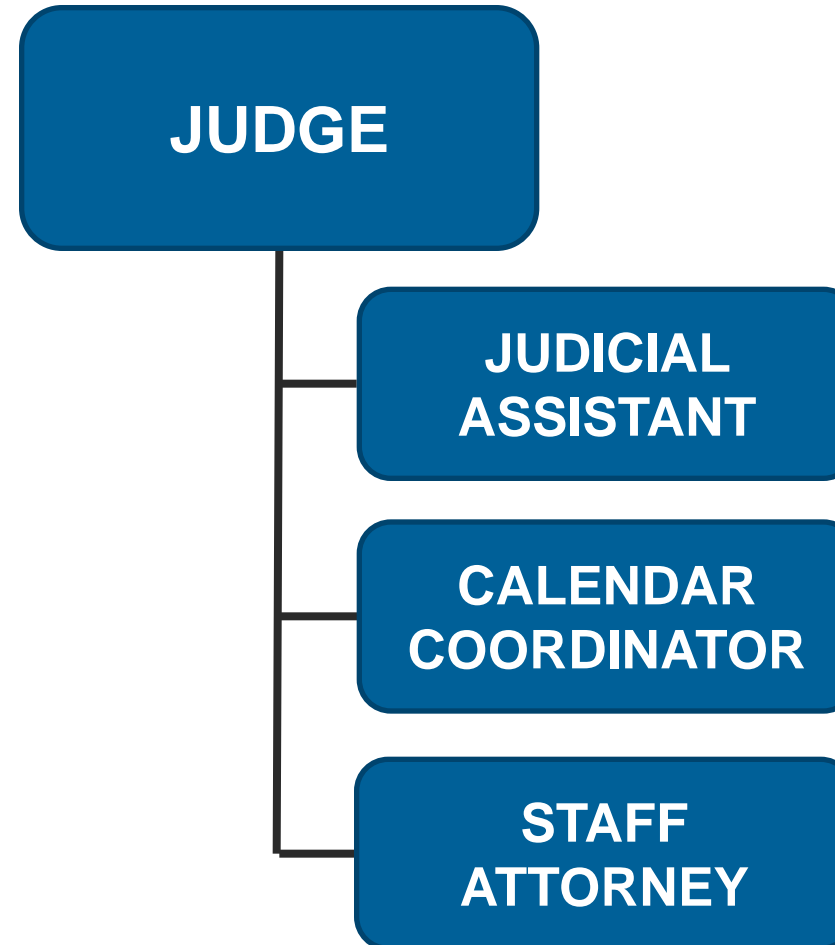


- Operates 365 days a year, 24 hours a day
- Directly accessible to the self-represented public and law enforcement
- Jurisdiction:
 - Civil Cases less than \$15,000
 - Garnishment Actions
 - Post-Judgment Collection
 - Landlord/Tenant Cases
 - Family Violence/TPO
 - Abandoned Motor Vehicle Claims
 - Personal Property Foreclosures
 - Arrest & Search Warrants
 - Citizen Warrant Applications
 - First Appearance Hearings

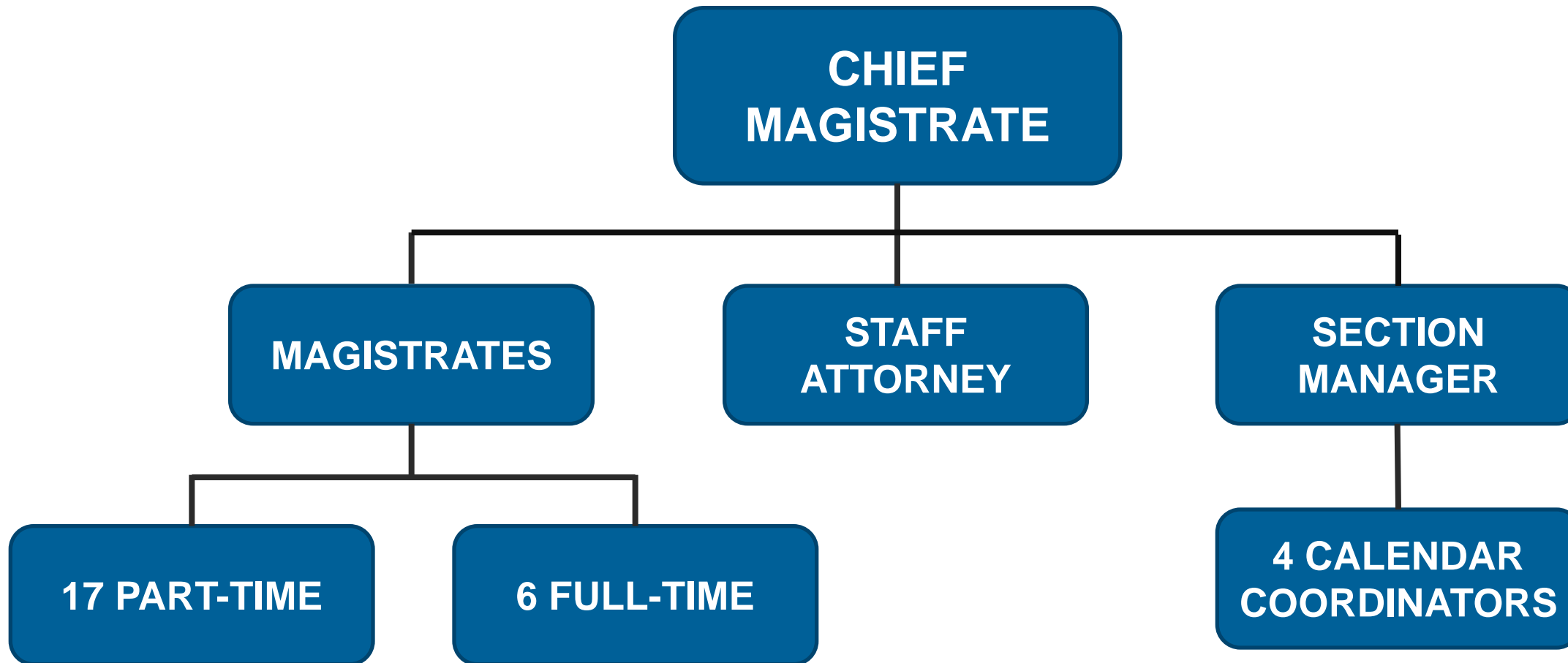
Organization



- Superior Court
 - 10 Judges
 - 30 Staff Members
- State Court
 - 6 Judges
 - 18 Staff Members



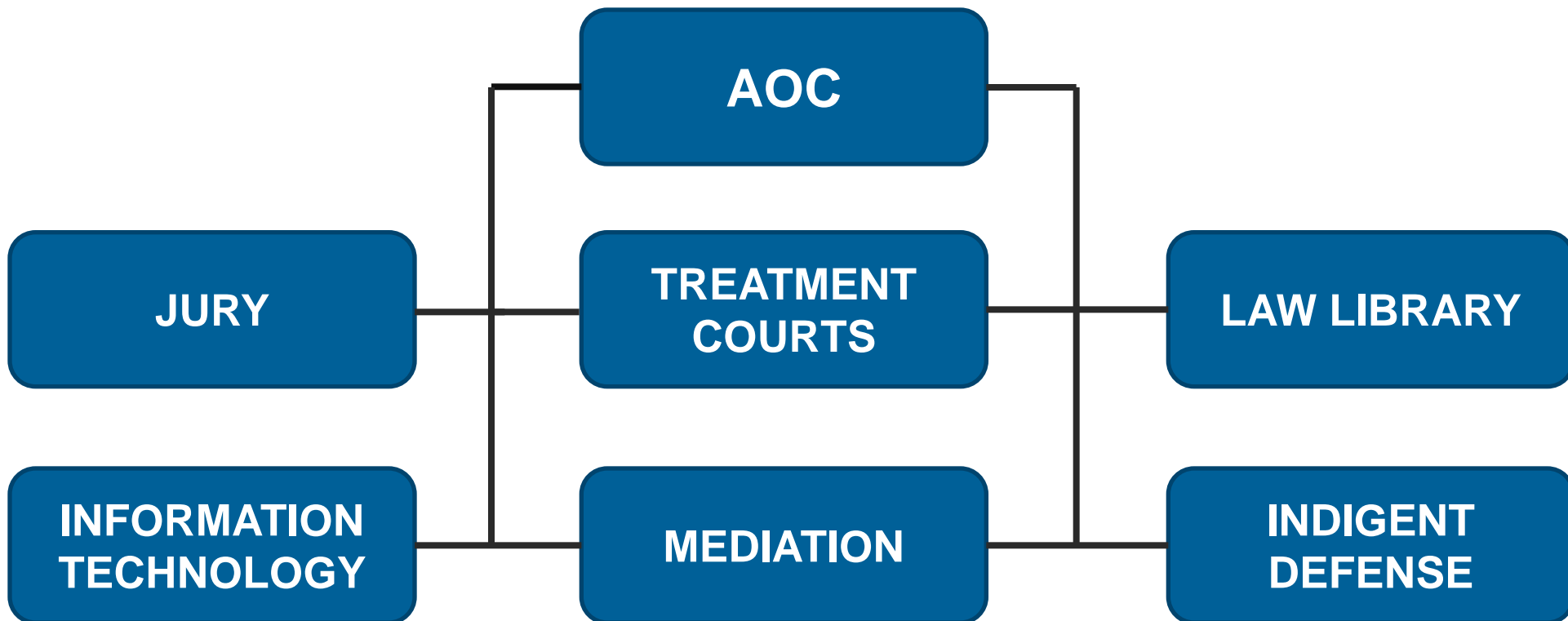
Organization



Organization



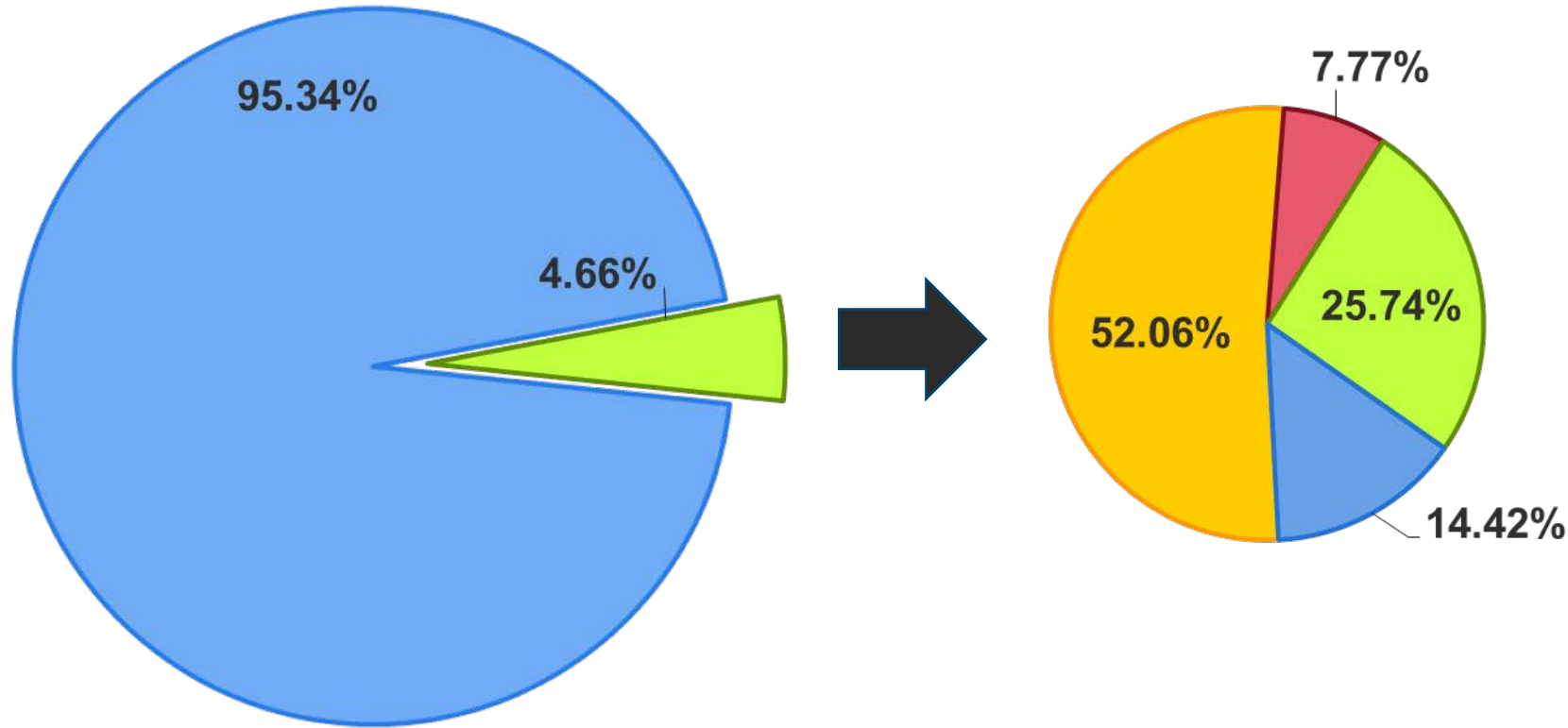
SUPERIOR, STATE, MAGISTRATE COURTS



Percentage of Department General Fund Utilized



- County Department General Fund
- Superior, State, Magistrate Courts & AOC



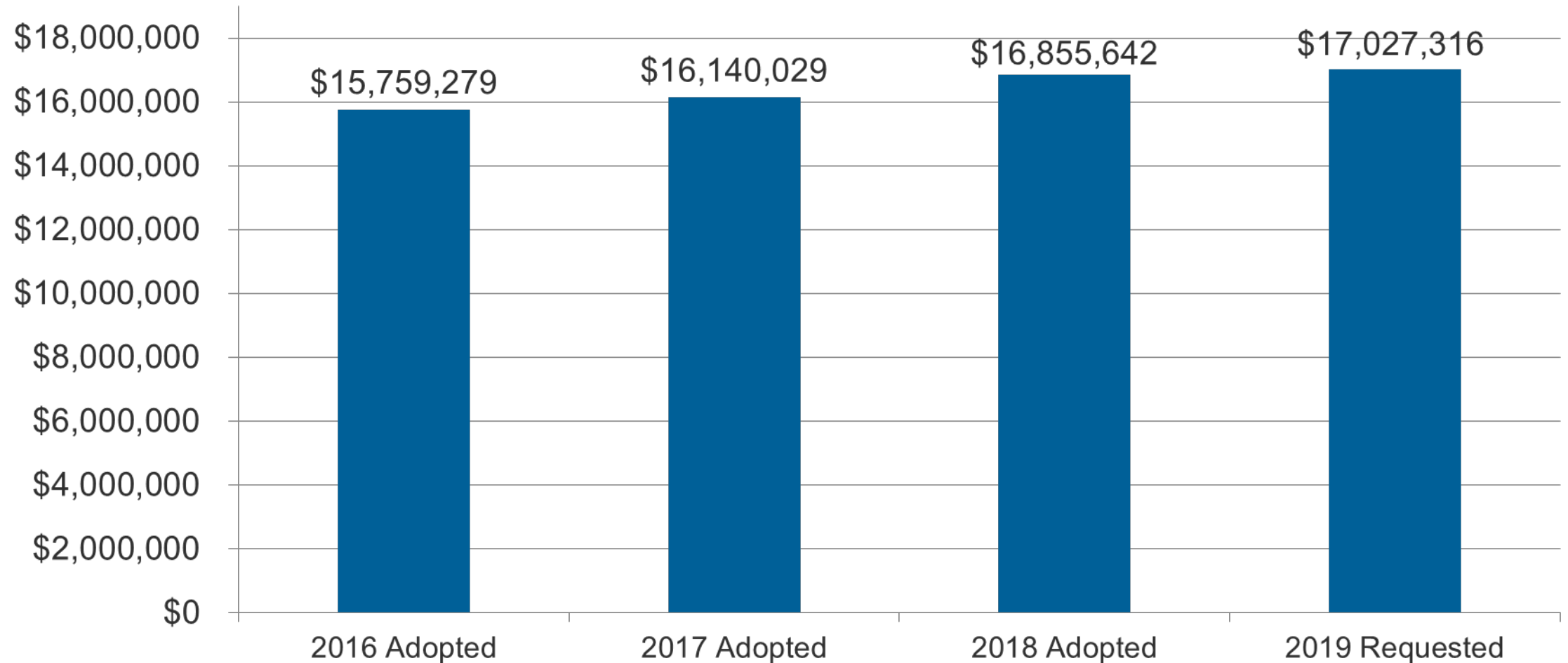
- Personal Services
- Operations
- Allocations
- Contributions to Other Funds

Budget Comparison

Superior-State-Magistrate



General Operating & Personal Services



Budget Comparison

Superior-State-Magistrate



	2018 Budget	2019 Requested	Difference
Personal Services	\$14,112,617	\$14,248,519	\$135,902
General Operating	\$2,743,025	\$2,778,797	\$35,772

Decision Packages



- Priority 1 – Convert 17 contract Court Reporter positions to full-time Court Reporters
- Priority 2 – Treatment Court Intake Coordinator

Full-Time Court Reporters



A majority of the proceedings in our courts require the presence of a court reporter in the courtroom to take down and provide a transcript of the proceeding.

- Shortage of contract court reporters
- Competitive market for court reporters
- Inability to fill full-time contract positions
- Inability to find short-term court reporter coverage

Full-Time Court Reporters



- 17 full-time court reporter positions
 - Salary & benefits
 - Professional dues & fees
 - Software licensing & maintenance
 - Equipment allotment
 - Office supplies
 - Transcripts
 - Contractors for additional coverage

Decision Package	Salary	Benefits	Add'l Items	Transcripts	Contractors	Total
1	\$986,017	\$359,999	\$53,100	\$916,582	\$214,902	\$2,530,600

Full-Time Court Reporters



2017 Court Reporter Reserve Budget*	2017 Judiciary Expenditures	2019 Judiciary Budget Request
\$2,400,000	\$2,026,341	\$2,530,600

**Court Reporter Reserve Budget includes funds for Juvenile Court, in addition to Superior, State, and Magistrate Courts*

Treatment Court Intake Coordinator



- Four case managers currently oversee participants in Drug Court, DUI Court, Mental Health Court, Veterans Court, and Parent Accountability Court.
- Increasingly difficult for the case managers to adequately evaluate the participant referrals in addition to effectively performing their caseload management tasks.
 - Number of referrals has doubled from 419 in 2015 to 839 in 2017.

Decision Package	Salary	FICA	OPEB	GSI	DC Retire	Add'l Items	Total
2	\$44,978	\$3,442	\$1,474	\$7,913	\$3,600	\$1,500	\$62,907



Questions?