



2019 Business Plan

Law Department

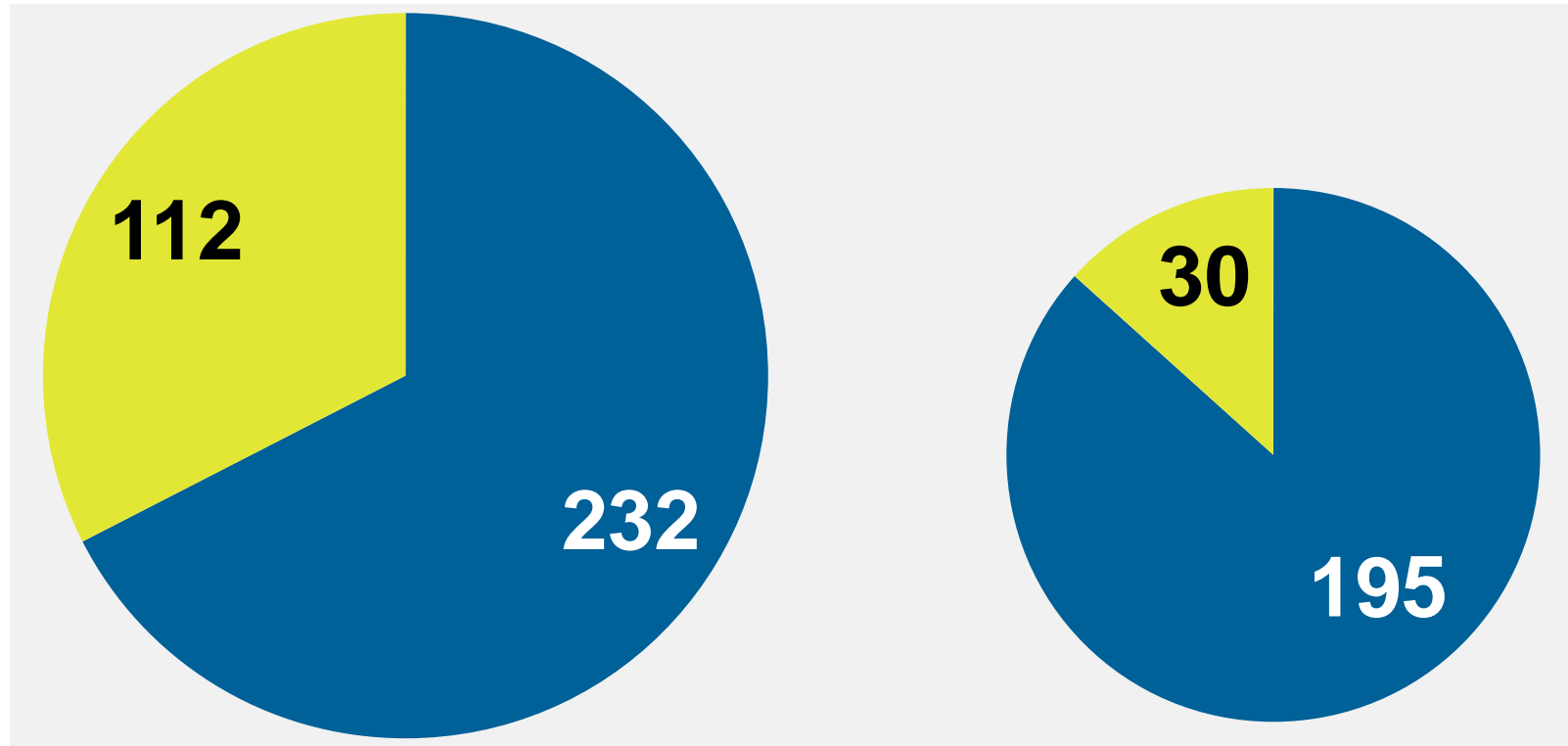
A Specialized In-House Law Firm



344 Years of Combined Legal Experience

■ Attorneys

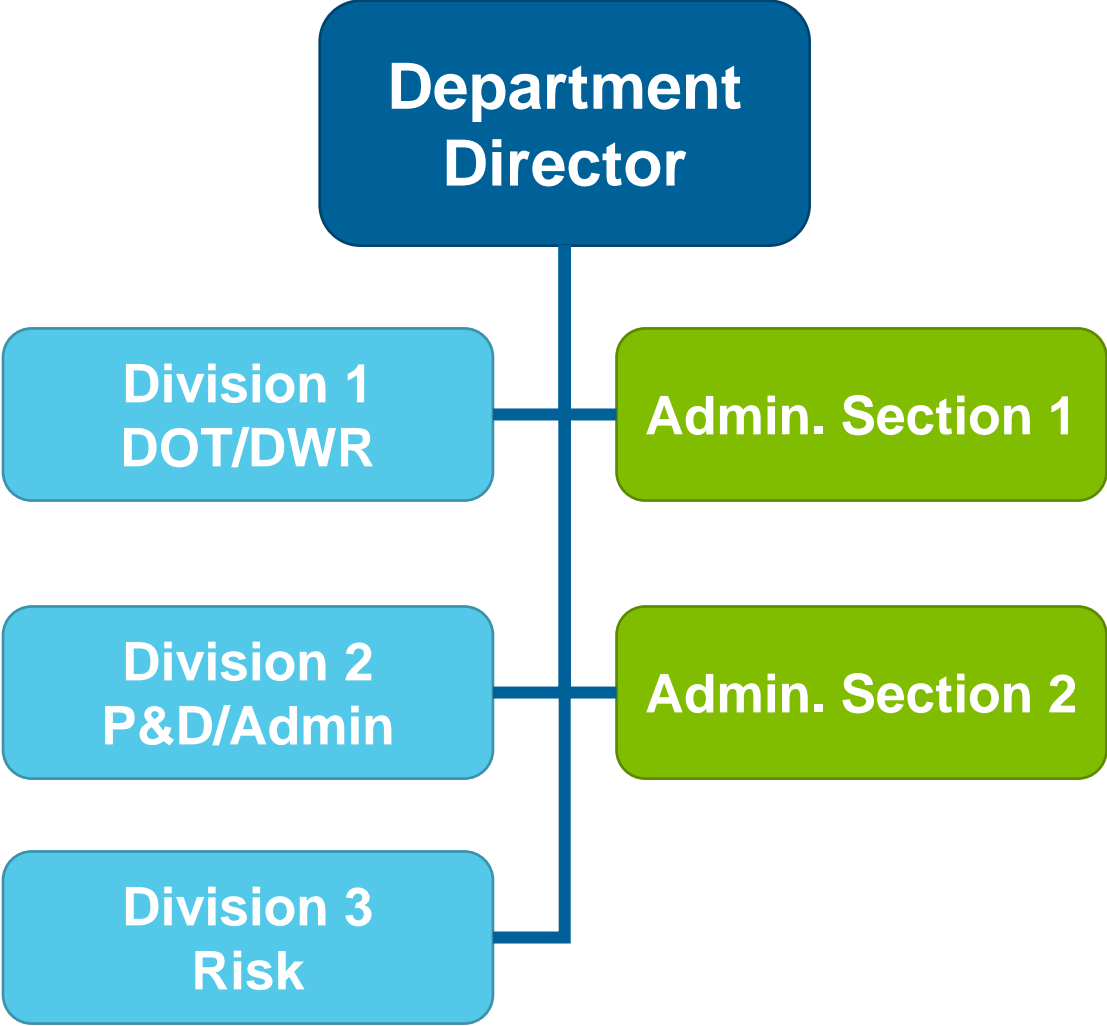
■ Support Staff



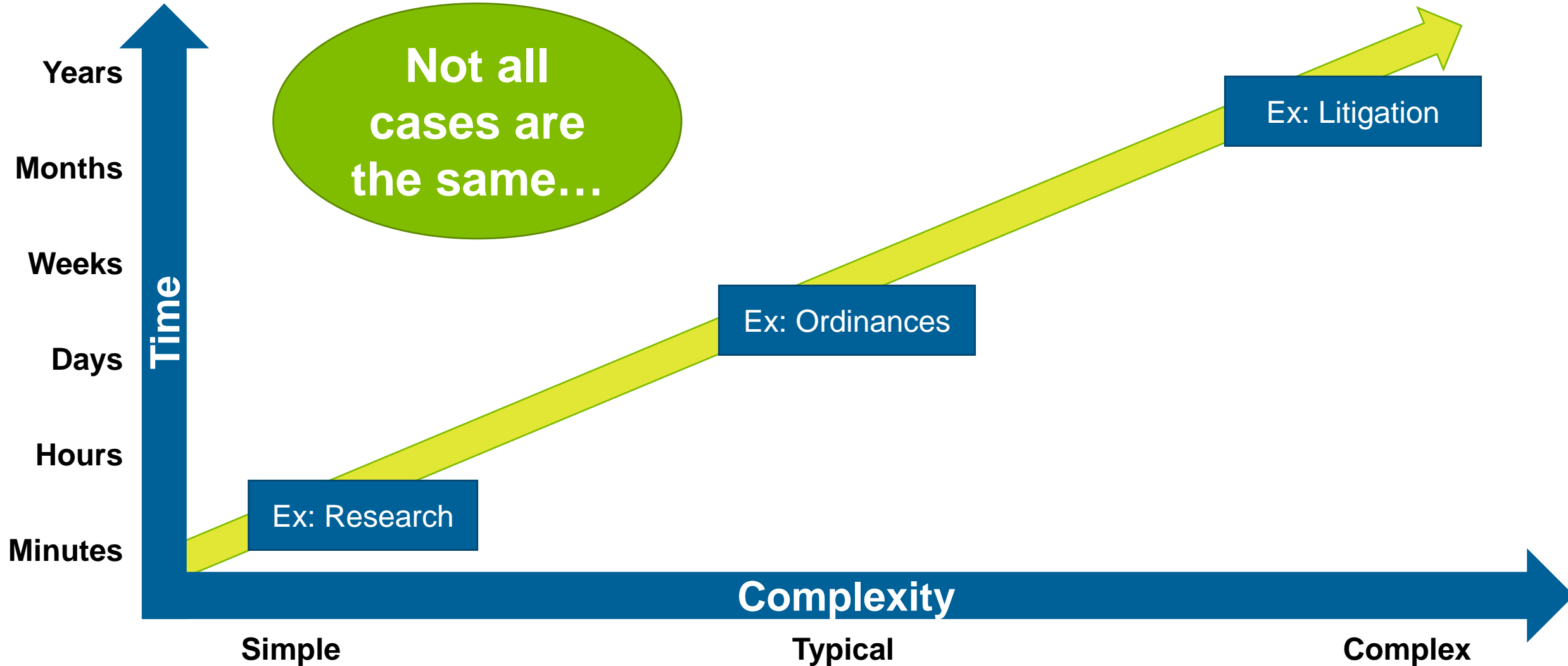
225 in Local Government



Gwinnett
Law Department



Workload Diversity



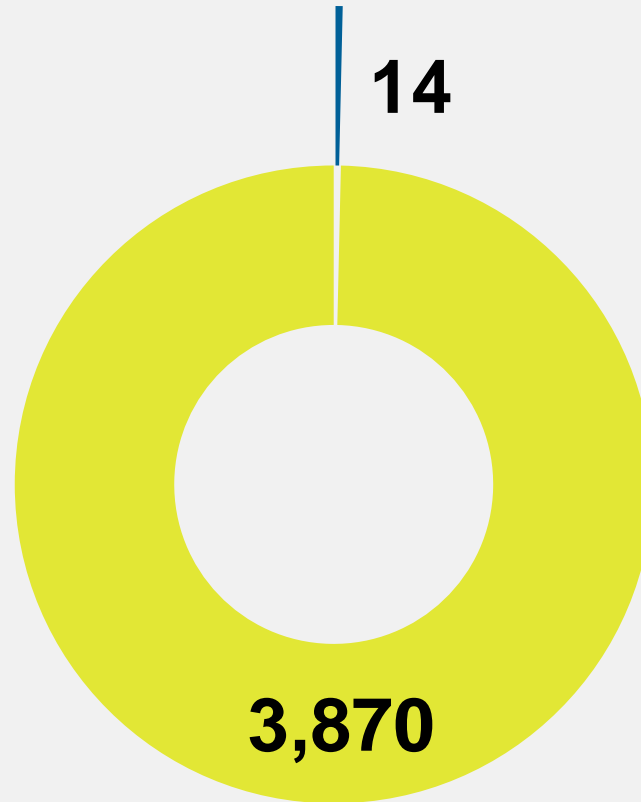
Case Example



2017-2018 Cases



3,884
Cases

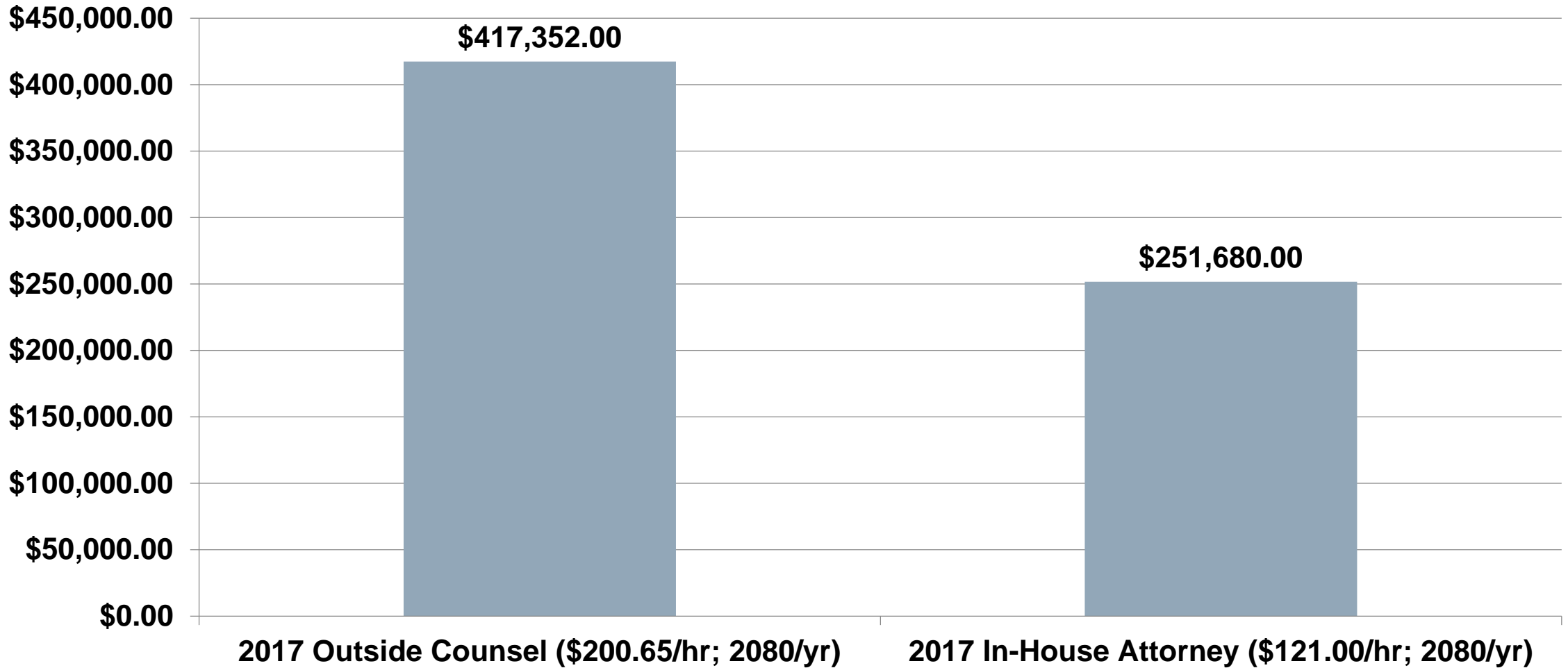


- Outside Counsel
- In-House

Outside Counsel Example



Annual Cost Comparison O.C. vs. Law Dept. Attorneys



The Role of Support Staff



- Legal Associates
 - Perform substantive and procedural legal work as authorized by law
 - Without Legal Associates, legal work would otherwise be performed by Attorneys
 - Performs legal work at a lower cost than Attorneys
- Interns
 - Research
 - Shadow/assist in trials and hearings

Decision Package # 19_Law_001



 P	Priority	 Smart & Sustainable Government
		
 S	Strategy	Establish and Maintain the Gwinnett County Standard
		
 T	Tactic	Establish a tenured and highly qualified staff
		
 P/I	Project or Initiative	Hire additional Legal Associate II to manage increase in workload

2019 Budget Request



- 2018 Adopted Budget: \$2,474,311
- 2019 Budget Request: \$2,438,725
- 2019 Decision Package: \$ 46,564
- 2019 Total Budget Request: \$2,485,289



Gwinnett
Law Department

Questions?