



2020 Business Plan Presentation

George F. Hutchinson, III
Chief Judge, Superior Court

GWINNETT COUNTY COURTS
SUPERIOR • STATE • MAGISTRATE

Mission Statement



The Georgia Constitution established the Courts of the Gwinnett Judicial Circuit to enforce and administer the laws of this State and of the United States. As a separate and distinct branch of government, the Courts are under a constitutional mandate to resolve disputes and enforce laws in a fair and impartial manner.

Vision



The judges of the Gwinnett Judicial Circuit are committed to professional, efficient, and impartial case resolution.

Superior Court



- Superior Court is a trial court of general jurisdiction.
- The Superior Court has exclusive Constitutional authority over all felony cases, domestic cases, cases involving title to real property and any case seeking equitable relief.
- Criminal cases are prosecuted by the District Attorney's Office.
- The Superior Court also has jurisdiction to correct errors made by lower courts by issuing certiorari; as well as hearing direct appeals from the Board of Workers' Compensation, Department of Labor (unemployment benefits) and lower courts such as municipal courts.

State Court



- State Court is a trial court with limited jurisdiction.
- Cases include misdemeanors as well as traffic violations.
- These cases are prosecuted by the Solicitor's Office.
- Civil cases handled by State Court include torts, contract actions, product liability, medical malpractice, and personal injury.
- State Court can also handle all other civil actions except where the Superior Court has exclusive jurisdiction such as divorce, equity, and title to land.

Magistrate Court

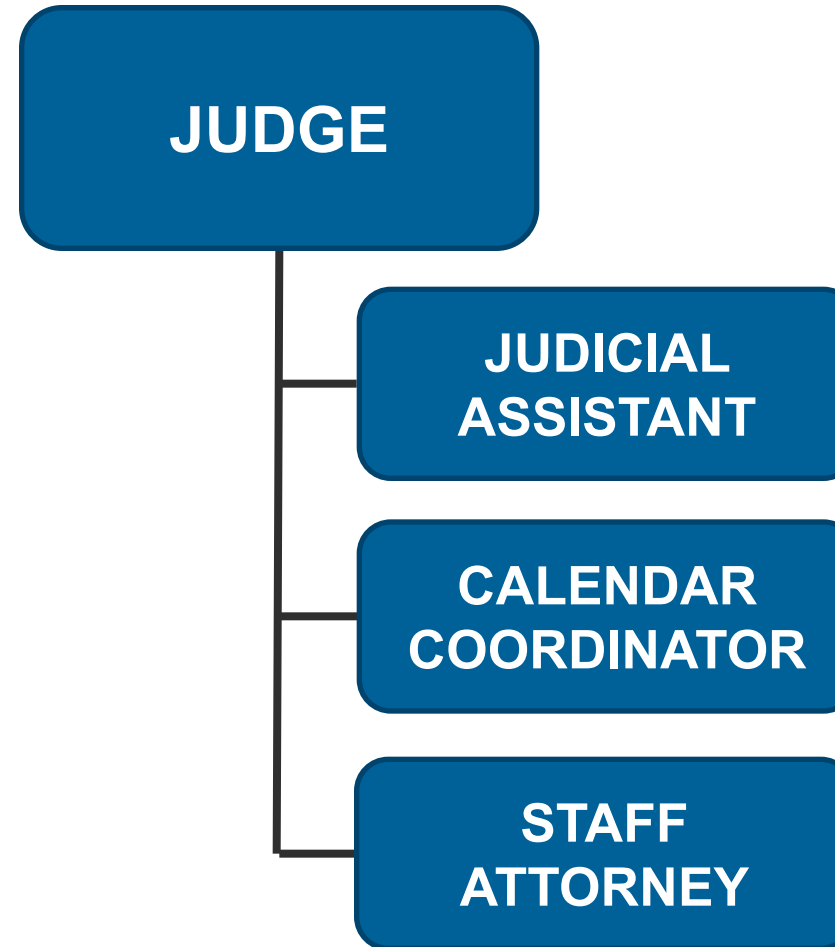


- Operates 365 days a year, 24 hours a day
- Is directly accessible to the self-represented public and law enforcement
- Magistrate Court provides judicial assistance to all other courts.
- Magistrate Court hears both civil and criminal cases, including:
 - Civil Cases less than \$15,000
 - Garnishment Actions
 - Post-Judgment Collection
 - Landlord/Tenant Cases
 - Family Violence/TPO
 - Abandoned Motor Vehicle Claims
 - Personal Property Foreclosures
 - Arrest & Search Warrants
 - Citizen Warrant Applications
 - First Appearance Hearings
 - Preliminary/Committal Hearings

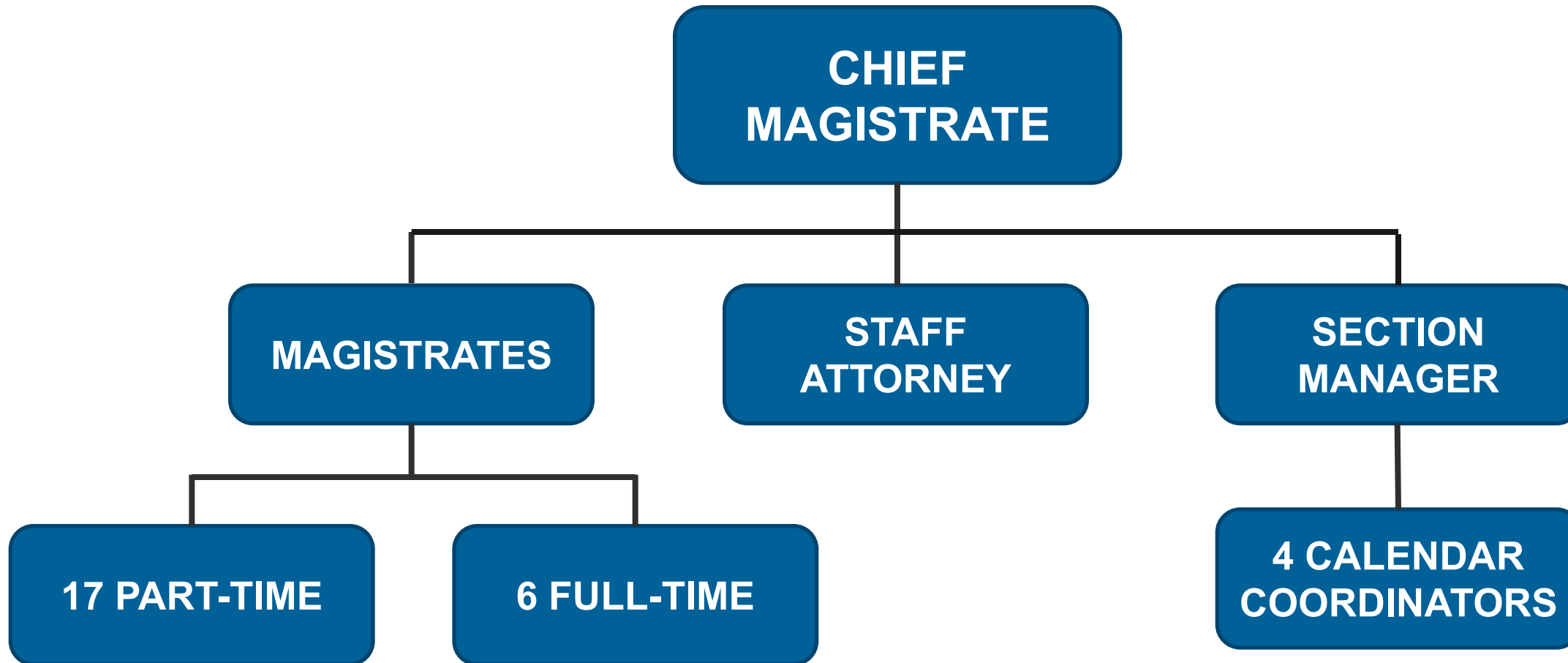
Organization



- Superior Court
 - 10 Judges
 - 30 Staff Members
- State Court
 - 6 Judges
 - 18 Staff Members



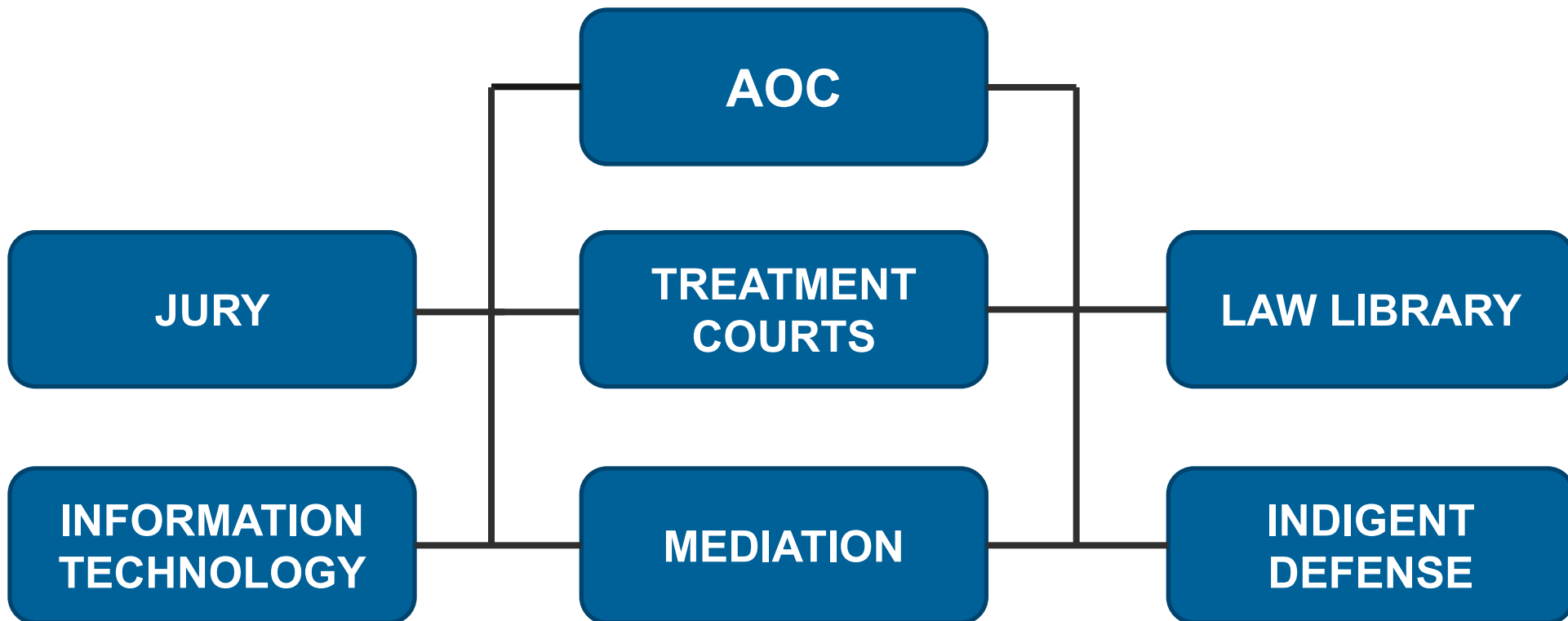
Organization



Organization



SUPERIOR, STATE, MAGISTRATE COURTS

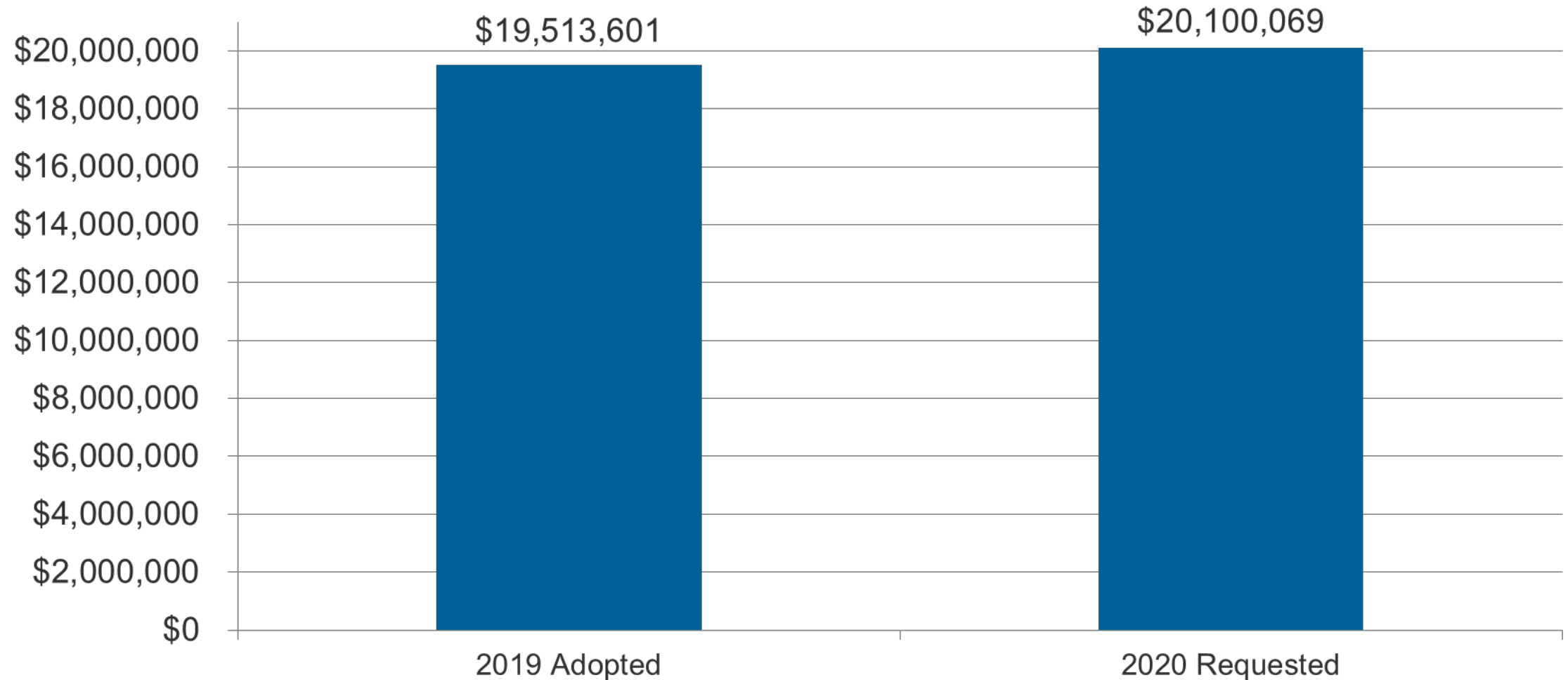


Budget Comparison

Superior-State-Magistrate



General Operating & Personal Services



Budget Comparison

Superior-State-Magistrate



	2019 Budget	2020 Requested	Difference
Personal Services	\$16,465,302	\$16,508,407	\$43,105
General Operating	\$3,048,299	\$3,591,662	\$543,363

Line Item Increases

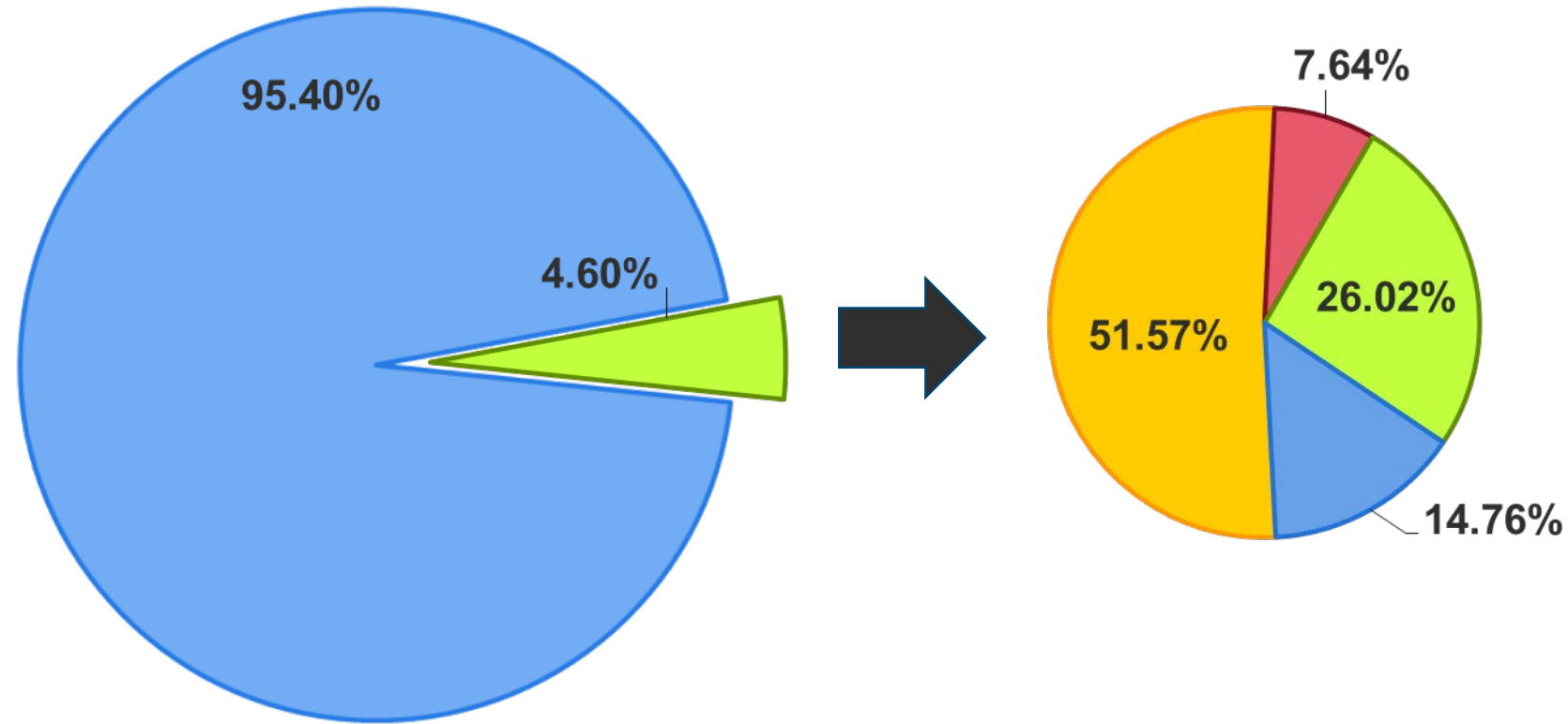


General Operating	2019 Budget	2020 Request	Difference
General Oper Exp	\$3,048,299.00	\$3,591,662.00	\$543,363.00
Professional Service	\$1,063,955.00	\$1,495,989.00	\$432,034.00
Sr. Judge Superior	\$182,357.00	\$259,258.00	\$76,901.00
Sr. Judge State	\$173,604.00	\$176,054.00	\$2,450.00
Grant Contingency Fund	\$199,692.00	\$201,192.00	\$1,500.00
ADR	\$150,000.00	\$150,000.00	\$0.00
Contract/Temp Employee	\$119,400.00	\$141,900.00	\$22,500.00
Contract Court Reporter	\$214,902.00	\$542,909.00	\$328,007.00
ADR & Law Lib Audit*	\$22,500.00	\$23,176.00	\$676.00
Elavon	\$1,500.00	\$1,500.00	\$0.00
Lic Support Agrmnts*	\$114,242.00	\$115,314.00	\$1,072.00
Supp-Subscriptions	\$71,500.00	\$91,000.00	\$19,500.00
Indust R&M-Contractd*	\$8,820.00	\$8,820.00	\$0.00
Office FF&E R&M	\$9,751.00	\$9,751.00	\$0.00
Copier Lease	\$60,000.00	\$63,600.00	\$3,600.00
Rent-PC*	\$57,114.00	\$73,378.00	\$16,264.00
Postal Services	\$260,998.00	\$260,998.00	\$0.00
Telecomm Services*	\$16,789.00	\$16,789.00	\$0.00
Advertising	\$1,300.00	\$1,300.00	\$0.00
Print/Binding Serv	\$36,000.00	\$40,000.00	\$4,000.00
Training/Travel	\$60,000.00	\$60,000.00	\$0.00
Dues/Fees-Prof Assoc	\$38,850.00	\$38,850.00	\$0.00
Jury Operations	\$946,765.00	\$960,000.00	\$13,235.00
Office Supplies	\$84,500.00	\$85,713.00	\$1,213.00
Industrial Supplies	\$38,500.00	\$38,500.00	\$0.00
Treatment Supplies	\$123,215.00	\$123,215.00	\$0.00
Office F F & E	\$56,000.00	\$108,445.00	\$52,445.00

Percentage of County Budget Utilized by Department



- County General Fund & District Funds
- Superior, State, Magistrate Courts & AOC



- Personal Services
- Operations
- Allocations
- Contributions to Other Funds

Decision Packages



- Priority 1 – Superior Court Judge
- Priority 2 – Increase Bailiff Per Diem

Superior Court Judge (HB21)



- Personal Services

- Judge
- Judicial Assistant
- Calendar Coordinator
- Staff Attorney
- Court Reporter

- General Operating

- Office Supplies
- Office FF&E
- Training/Travel
- Dues & Fees
- Subscriptions
- PC Lease
- Copier Rental

- Senior Judge
- Printing
- Postage
- Jury Operations
- Industrial Supplies
- Contract Ct Reporter
- Transcripts

Decision Package	Personal Services	General Operating	Total
1	\$422,556	\$199,410	\$621,966

Increase Bailiff Per Diem



- The Superior, State, and Magistrate Courts utilize bailiffs during trials and hearings to assist the Court and jurors.
- The per diem rate for bailiffs was last increased in 2016.
- The Judiciary requests funds to increase the per diem rate from \$75 to \$85.

Decision Package	Salary	FICA	Total
2	\$41,330	\$3,162	\$44,492



Questions?