

2022 Budget Request

Gwinnett County Courts
Superior – State – Magistrate

Judge George F. Hutchinson, III
Chief Judge, Superior Court



Mission Statement

The Georgia Constitution established the Courts of the Gwinnett Judicial Circuit to enforce and administer the laws of this State and of the United States. As a separate and distinct branch of government, the Courts are under a constitutional mandate to resolve disputes and enforce laws in a fair and impartial manner.

Vision

The judges of the Gwinnett Judicial Circuit are committed to professional, efficient, and impartial case resolution.



Superior Court

- Superior Court is a trial court of general jurisdiction.
- The Superior Court has exclusive Constitutional authority over all felony cases, domestic cases, cases involving title to real property, and any case seeking equitable relief.
- Criminal cases are prosecuted by the District Attorney's Office.
- The Superior Court also has jurisdiction to correct errors made by lower courts by issuing certiorari; as well as hearing direct appeals from the Board of Workers' Compensation, Department of Labor (unemployment benefits), and lower courts such as municipal courts.

Superior Court



State Court

- State Court is a trial court with limited jurisdiction.
- Cases include misdemeanors as well as traffic violations.
- These cases are prosecuted by the Solicitor's Office.
- Civil cases handled by State Court include torts, contract actions, product liability, medical malpractice, and personal injury.
- State Court can also handle all other civil actions except where the Superior Court has exclusive jurisdiction such as divorce, equity, and title to land.

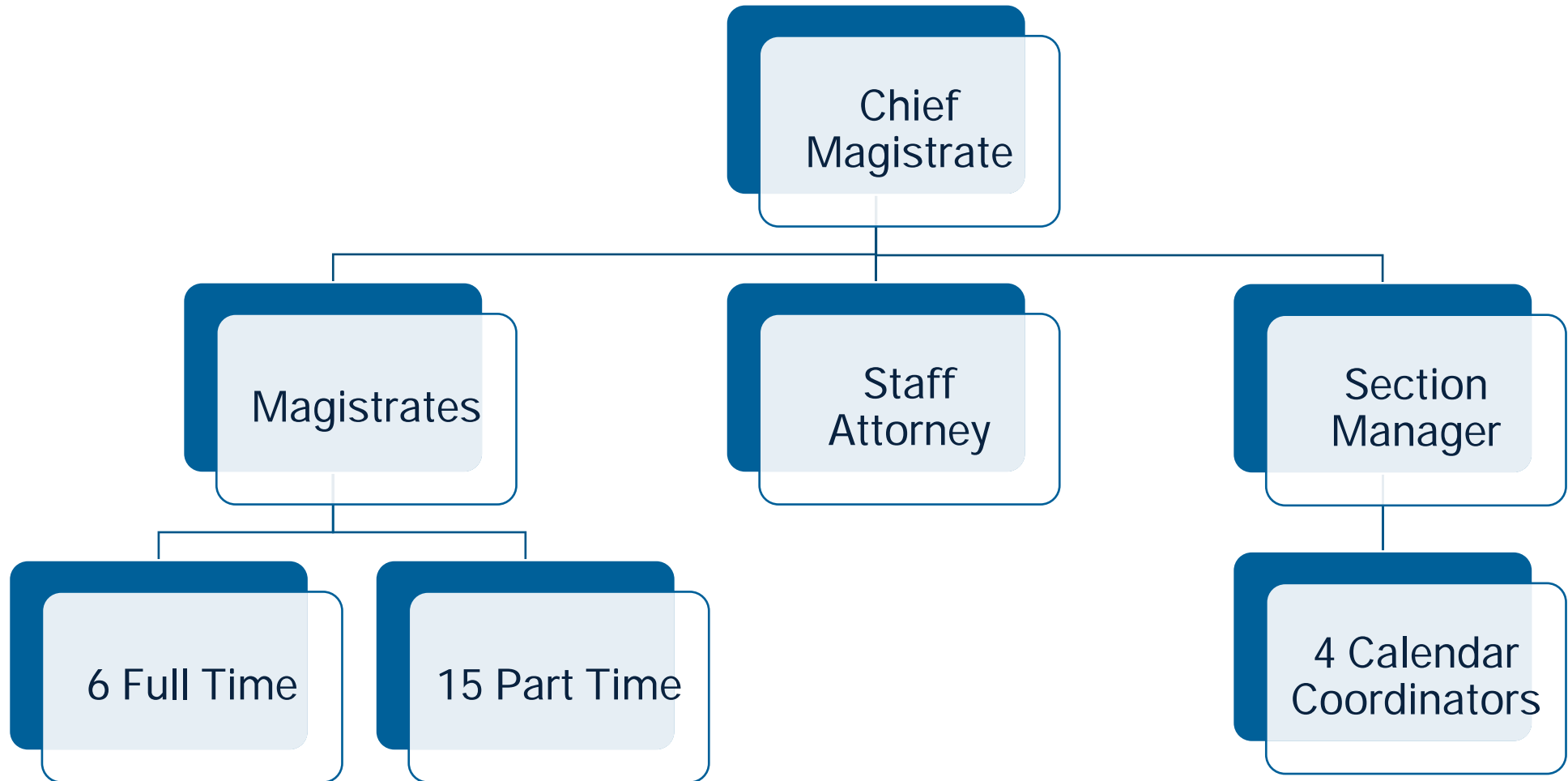
State Court



Magistrate Court

- Operates 365 days a year, 24 hours a day
- Is directly accessible to the self-represented public and law enforcement
- Magistrate Court provides judicial assistance to all other courts
- Magistrate Court hears both civil and criminal cases, including:
 - Civil Cases less than \$15,000
 - Garnishment Actions
 - Post-Judgment Collection
 - Landlord/Tenant Cases
 - Family Violence/TPO
 - Abandoned Motor Vehicle Claims
 - Personal Property Foreclosures
 - Arrest & Search Warrants
 - Citizen Warrant Applications
 - First Appearance Hearings
 - Preliminary/Committal Hearings

Magistrate Court



Administrative Office of the Courts



Operational Decisions

- Continue communication and coordination with other departments to improve virtual court proceedings.
- Increase the use of eFiling in collaboration with the Clerk of Court.
- Analyze and improve workflow processes to increase the use of technology for efficiency.

Internal Strategic Decisions

- Increase the use of technology to make the services of the court more accessible, secure, and convenient while maintaining cost effectiveness.
- Ensure that court facilities accommodate current and future workflow and technology needs.
- Promote timely case resolution by providing optimal resources to all judges and staff, to include the tools needed to operate in a digital court environment.
- Improve communication with the public to provide a better understanding of the issues that affect the delivery of justice.
- Expand cultural awareness and sensitivity training for judges and court personnel.

County Initiatives

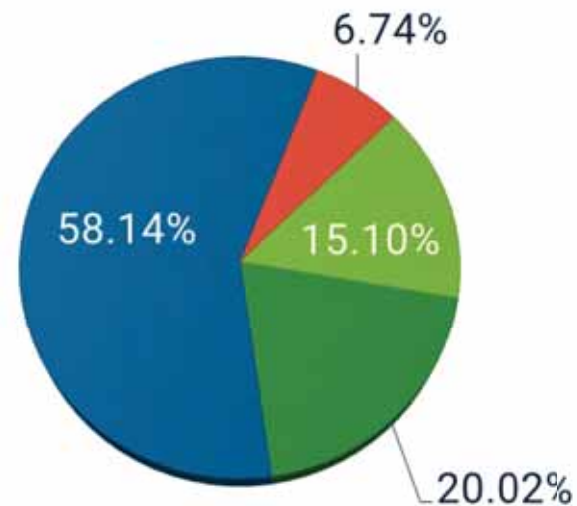
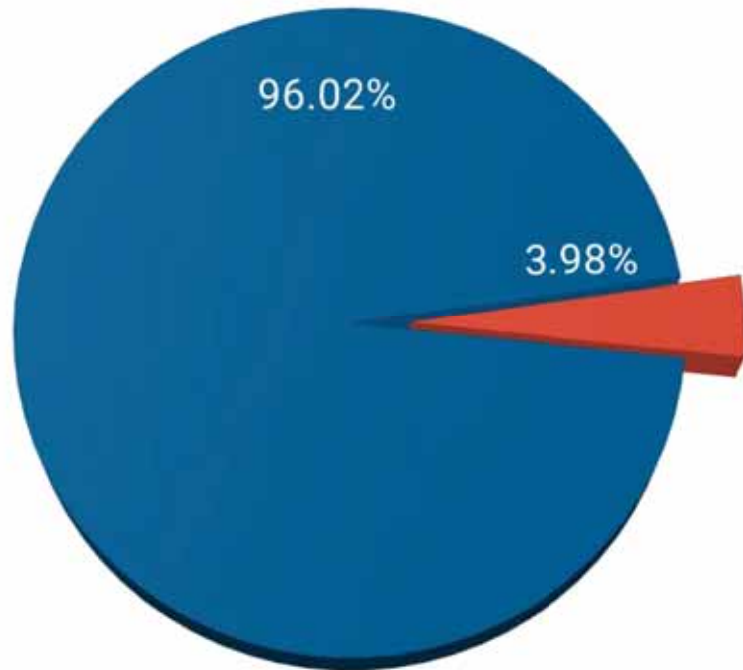
- **Safe, Livable, and Healthy Community**
Ensure a safe community by providing superior and comprehensive services and engaging partners to create a healthy Gwinnett.
- **Sustainability and Stewardship**
Maintain a smart and sustainable government by consistently operating based on sound reasoning and best practices with a long-term focus.
- **Organizational Excellence and Accountability**
Maintain the Gwinnett Standard, attract and retain a quality workforce, and continue the practice of transparency while providing services to the residents of Gwinnett.

Budget Comparison

	2021 Budget	2022 Request	Difference
Personal Services	\$16,928,570	\$17,054,765	\$126,195
General Operating	\$3,593,652	\$3,515,467	(\$78,185)

Percentage of Department General Fund Utilized

- County Department General Fund
- Superior, State, Magistrate Courts & AOC



- Personal Services
- Operations
- Allocations
- Contributions to Other Funds



Charlotte J. Nash Court Building

- Eight Superior Court Judicial Offices
- Eight Courtrooms
- Jury Operations
- Attorney-Client Conference Rooms
- Mediation Rooms

Decision Package

2022_JUD_001

- Requesting two full time IT Associate III positions to provide technology assistance to the courts and residents
 - Last IT position added in 2016
 - Nash Court Building operational
 - Increased use of technology providing virtual proceedings
 - Converting the services of two contract IT staff members on a full-time schedule

Decision Package

2022_JUD_002

- Requesting four part time positions to assist the courts and residents in the Nash Court Building
 - Located at information desks throughout the building
 - Act as liaison between judicial staff and the public
 - Provide information to patrons
 - Grant access to the secured hallway to authorized personnel and visitors

Decision Package

2022_JUD_003

- Requesting to increase the per diem rate for Bailiffs from \$75 to \$85
 - Rate was last increased in 2016
 - Pursuant to O.C.G.A. § 15-12-7, the rate increase has been recommended by the grand jury impaneled in September 2019
 - The Judiciary will be renewing this request with the grand jury to be impaneled in September 2021

Budget

2021 Budget	\$20,522,222
Changes To Base	\$48,010
2022 Base	\$20,570,232
Decision Packages	\$249,862
2022 Budget	\$20,820,094



Questions



Gwinnett