

# Recovery Plan 2024 Report

State and Local Fiscal Recovery Funds

Version 5  
July 31, 2024



# Table of Contents

- General Overview ..... 2
- Executive Summary ..... 2
- Uses of Funds..... 3
- Promoting Equitable Outcomes..... 8
- Community Engagement..... 8
- Labor Practices ..... 9
- Use of Evidence..... 9
- Expenditure and Obligation Overview..... 11
- Table of Expense by Expenditure Category ..... 12
- Project Inventory ..... 17
- Projects ..... 32

# General Overview

## Executive Summary

Gwinnett County was awarded \$181,855,587 in Coronavirus State and Local Fiscal Recovery Funds (CSLFRF) by the U.S. Department of the Treasury (Treasury) as authorized through the American Rescue Plan Act (ARPA). These funds provide a substantial infusion of resources to help turn the tide on the pandemic, address its economic fallout, and lay the foundation for a strong and equitable recovery.

Funding objectives of this program include:

- **Support urgent COVID-19 response efforts** to continue to decrease the spread of the virus.
- **Replace lost public sector revenue** to strengthen support for vital public services and help job retention.
- **Support immediate economic stabilization** for households and businesses.
- **Address systemic public health and economic challenges** that have contributed to the inequitable impact of the pandemic.

Gwinnett County will utilize these dollars to enhance our [County values](#) ensuring that we advance our efforts to support equity and inclusivity in our community through innovative and impactful programming.

In compliance with reporting requirements, Gwinnett County prepared, submitted, and published its Recovery Plan by the August 31, 2021, deadline. However, at the time of initial submission, the County's plan for utilizing Coronavirus State and Local Fiscal Recovery Funds (CSLFRF) was still in development and had not yet been authorized by the Board of Commissioners.

The Gwinnett County Board of Commissioners acted on September 21, 2021, to approve a resolution to authorize the allocation of American Rescue Plan Act funding to reflect the needs of the County based on community engagement.

A revised report submitted November 22, 2021, updated the 2021 Recovery Plan Report to reflect the innovative and impactful programming that the Gwinnett County Board of Commissioners authorized to help support a strong and equitable recovery from the COVID-19 pandemic and economic downturn.

The 2024 Recovery Plan Report provides additional updates and tracks project activities through June 30, 2024.

## Uses of Funds

The Gwinnett County Board of Commissioners acted on September 21, 2021, to approve a resolution to authorize the allocation of American Rescue Plan Act funding to reflect the needs of the County based on community engagement.

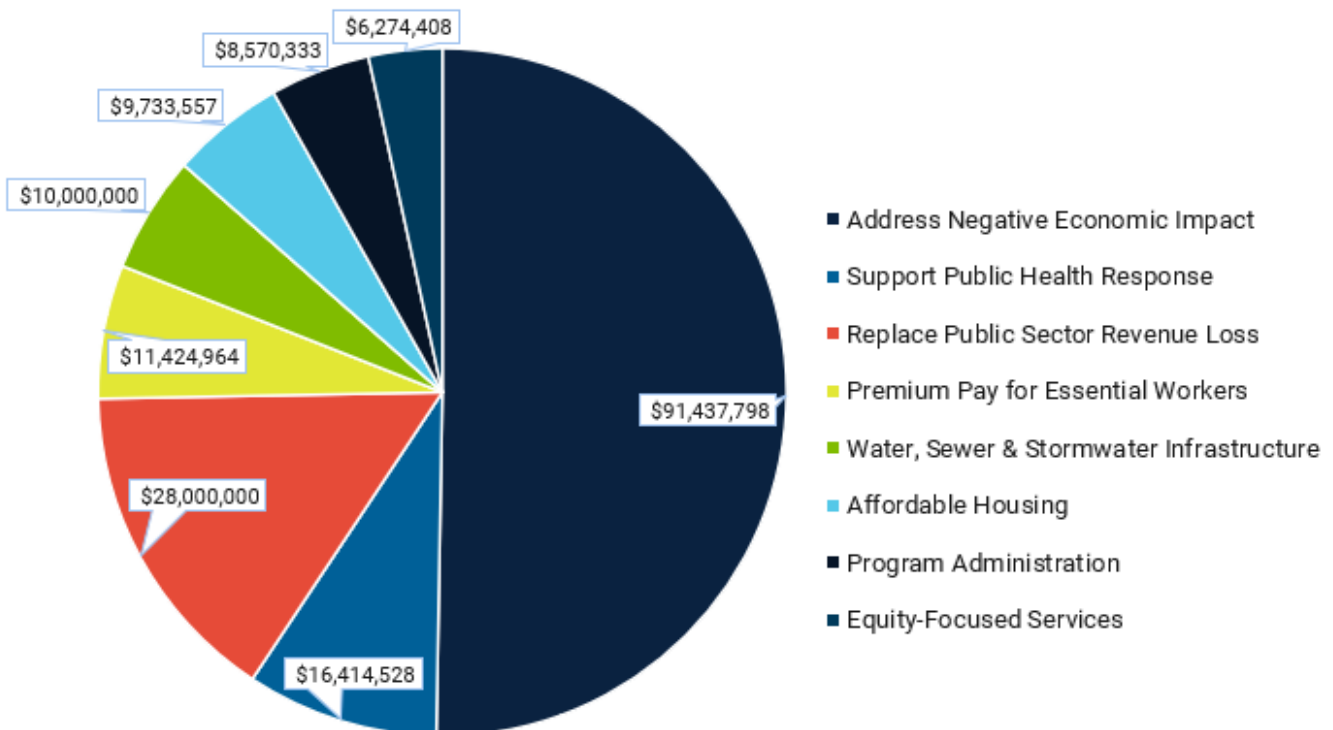
These funds provide a substantial infusion of resources to help turn the tide on the pandemic, address its economic fallout, and lay the foundation for a strong and equitable recovery.

Funding objectives of this program include:

- **Support urgent COVID-19 response efforts** to continue to decrease spread of the virus and bring the pandemic under control.
- **Replace lost public sector revenue** to strengthen support for vital public services and help retain jobs.
- **Support immediate economic stabilization** for households and businesses.
- **Address systemic public health and economic challenges** that have contributed to the inequitable impact of the pandemic.

Gwinnett County is utilizing ARPA funding to enhance our [County values](#) ensuring that we advance our efforts to support equity and inclusivity in our community through innovative and impactful programming. To maximize our use of these Fiscal Recovery Funds we worked to focus our allocations within the priority program areas as defined by the U.S. Department of the Treasury.

**CSLFRF Allocation**



Projects will include:

- **Supporting Public Health Response to the Pandemic (\$16.4 M)**
  - The County will utilize ARPA funds to continue to support the Gwinnett County Public Health Department and other partner agencies in efforts to prevent, mitigate, and respond to the COVID-19 pandemic.
  - In addition to the general support of COVID related public health activities, these funds will also support:
    - Vaccination site operational costs
    - Vaccination incentive programs
    - Public health infrastructure and equipment enhancements
    - Mobile clinic expansions
    - Behavioral healthcare services (including mental health or substance misuse treatment, crisis intervention, and related services)
    - Assistance to Non-Profits
- **Replacement of Public Sector Revenue Loss (\$28 M)**
  - Gwinnett County used \$28 million to replace revenue lost in FY 2020 and 2021 due to the pandemic.
- **Equity-Focused Service Provision throughout the County (\$6.3 M)**
  - This allocation will allow the County to expand its current Health and Human Services model and enhance community resource support in targeted underserved areas.
  - Funds will be used for:
    - Veteran support services
    - Nonprofit and County service provisions for critical needs (individualized community-based needs)
    - Comprehensive human services system needs assessment/study
    - Disparity Study
- **Addressing the Negative Economic Impacts Exacerbated by the Pandemic (\$91.4 M)**
  - ARPA funds will be utilized to address negative impacts on our community with funding available to support:
    - Rebuilding Tourism, Arts & Entertainment
    - Small Business Recovery
    - Workforce Development
    - Nonprofit Capacity Building & Operating Support
    - Food Insecurity
    - Early Childhood Learning & Literacy
    - Transportation Services
    - Other Gwinnett County Government Operational Needs
    - Home Repairs Assistance program support (new financial assistance program to assist eligible households in completing necessary repairs to reduce water/sewer waste and overconsumption and reduce monthly usage costs to customers)
  - These funds will be used to expand the Centerville OneStop (\$25M) and create a Gwinnett OneStop (\$41.7M). The expansion of health and human services

support will offer the County the opportunity to provide much needed services in public health, early learning, mental health, and family services that are necessary for sustaining the standard of Gwinnett excellence and creating a safe, livable, and healthy community.

- **Compensation for Essential Workers (\$11.4 M)**

- Gwinnett County utilized ARPA funds for authorized premium pay to qualified employees working in the field with a higher risk of severe illness from COVID-19 in FY 2021.
- Additional funds will be utilized as recruitment incentives and premium pay for selected essential worker classifications (i.e., Public Safety) within the County and may be considered for pass through to vendors providing critical County services.

- **Water, Sewer, and Stormwater Infrastructure Improvements (\$10 M)**

- ARPA funds will be utilized to address water, sewer, and stormwater improvements directed to underserved areas within the County. This includes improvements to infrastructure, such as dam rehabilitation projects in underserved areas.

- **Affordable Housing (\$9.7 M)**

- Gwinnett County's Affordable Housing Development Fund offers funding to facilitate the development of affordable housing units for households making at or below 65 percent of Area Median Income to help address the impacts from the COVID-19 pandemic.

- **Program Administration (\$8.6 M)**

- Overall program administration costs, technology enhancements, and the acquisition of Grants Management Solution software to facilitate grant program reporting and compliance requirements.

It is important to note that Gwinnett County is also a recipient of Emergency Rental Assistance Program (ERAP) funds. Our ERAP funded program, Project RESET 2.0 (PR2.0), adhered to low barrier programming, implemented multiple income source qualifications, and partnered with the Magistrate Court to ensure program success. PR2.0 utilized over \$66.9 million in ERA1 and over \$25.5 million in ERA2 funding to ensure that 24,768 individuals in Gwinnett County did not have to face an eviction or utility disconnection. Gwinnett processed over \$86.5 million in financial assistance for 9,858 households. ERA1 funding supported 6,154 households and 15,528 individuals. ERA2 funding supported 3,704 households and 9,240 individuals. Gwinnett County plans to utilize remaining ERA2 funding for an eligible affordable housing project(s) to further support the community's housing needs which were exacerbated due to the pandemic and is evaluating utilizing CSLFRF reserved funding for affordable housing needs.

Gwinnett County has partnered with a number of civic, quasi-governmental, and nonprofit organizations to achieve its ARPA funding objectives. County departments and subrecipient agencies have been working tirelessly to implement impactful programming that will make a meaningful and lasting impact throughout the community.

In partnership with United Way of Greater Atlanta, the County awarded ARPA funds to nonprofit agencies providing critical services in Gwinnett to support their response to local needs worsened by the COVID-19 pandemic. The following pie chart reflects the nonprofit allocations and expenditures by direct service category. Achieving 100% completion, the nonprofits served over 100,000 citizens.

# ARPA in Action

## Nonprofit Direct Services

### Allocation

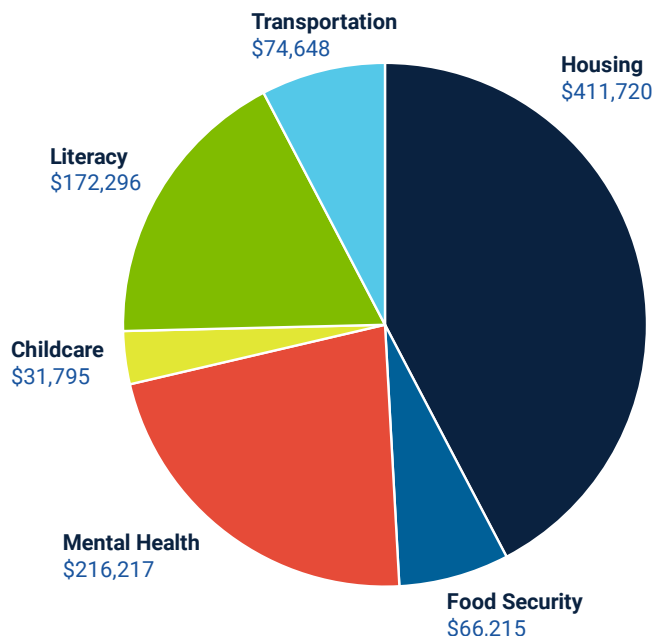
Housing	\$ 1,498,593
Mental Health	\$ 1,018,658
Food Security	\$ 545,999
Literacy	\$ 480,000
Childcare	\$ 445,000
Transportation	\$ 261,750
<b>Total</b>	<b>\$ 4,250,000</b>

### To Date:

- 47,000+ persons served
- Almost \$1M expended
- 23% completed



### Expenditures



Our Water Resources Assistance Program (WRAP) has also been especially beneficial to our community. This program assists disproportionately impacted households with plumbing and septic repairs that will save them money on their water bills as well as preserve the environment. To date the program has expended 30% of their awarded funds and has assisted 284 households throughout the county – which includes 136 senior households and 78 households with disabilities.



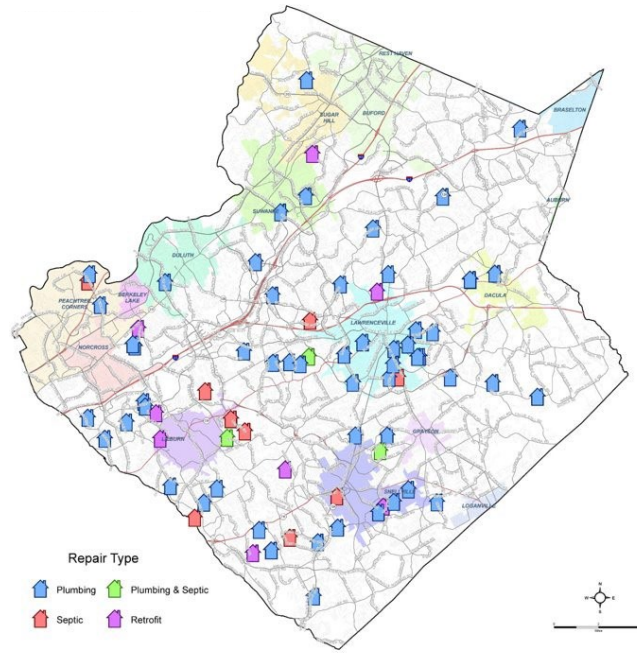
# ARPA in Action

## Water Resources Assistance Program (WRAP)

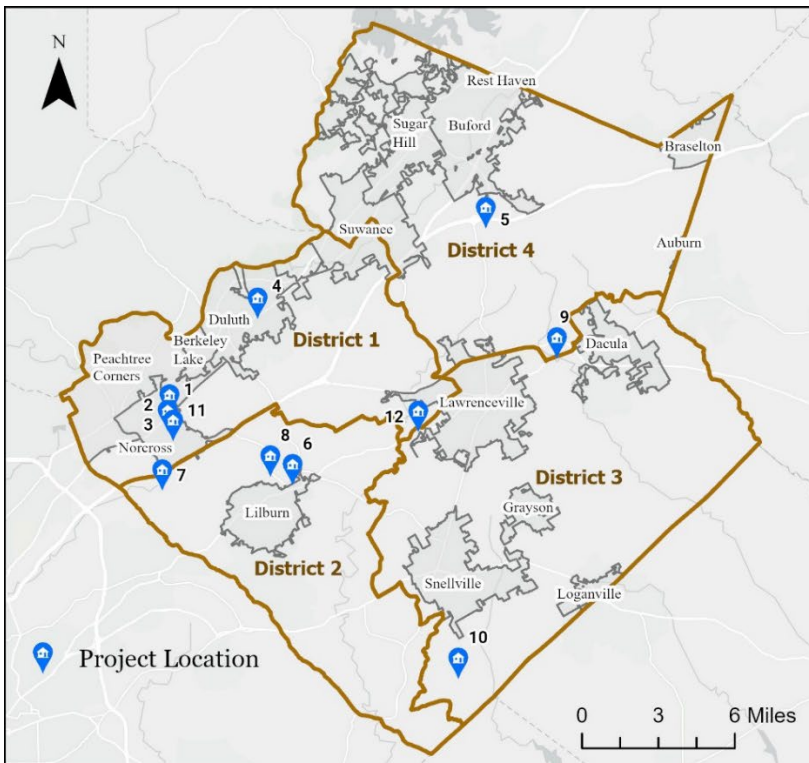
WRAP Allocation      \$ 4,000,000

To Date:

- \$1,188,000 Expended
- 284 Households (HH) Served
  - 136 Senior HHs
  - 78 HHs w/ Disabilities



Continuing its efforts to tackle affordable housing, Gwinnett County announced the Gwinnett County Affordable Housing Development Fund in August 2023. This fund allocated \$18 million to the development of affordable housing for households making up to 65% of Area Median Income (AMI). The map below identifies the twelve awarded projects that will develop 999 units (780 affordable units, 219 market-rate units). Of these units, 12% (122) will be for ownership and 88% (877) for rental.



Number	Project Name
1	Sage Apartments
2	Legacy at Walton Crossing Phase II
3	Legacy at Walton Crossing Phase I
4	Rainbow Village Housing Phase II
5	Ivy Ridge Apartments
6	Preservation - HVAC Replacement
7	Wesley Square
8	Shady Drive and Vernon Street
9	New River's Edge Phase II
10	Lenora Oaks
11	Mitchell Pointe
12	Redland Trace



## Promoting Equitable Outcomes

Gwinnett County is committed to making sure that communities most impacted by the negative economic effects of the COVID-19 pandemic are informed about the resources that are available to them through ARPA CSLFRF funding. The available programs are publicized via news releases, public school newsletters, utility bill inserts, and flyers made available in public facilities such as libraries, senior centers, and the Justice and Administration Center. These resources are further accessed by Community Navigators, located at our OneStop centers that are strategically located in various disadvantaged communities throughout the county, and seasonally at our community warming centers. The Gwinnett County website also provides an exhaustive list of programs funded by ARPA CSLFRF Funds, qualifications for access, along with electronic registration forms, and frequently asked questions. Phone numbers are provided for additional information. Any residents who qualify for assistance through one of our programs are also informed of other programs that might be of interest to them.

## Community Engagement

To ensure that Gwinnett County is being strategic and impactful with CSLFRF, we conducted the following efforts to guide our approach to allocating funds.

- A Needs Assessment engaged community stakeholders in defining critical services and ongoing needs of residents due to the public health emergency
- An Internal Assessment of County needs and COVID-19 expenses, to include an analysis of allowable revenue recovery, was conducted to ensure the County is retaining necessary funds to ensure effective response to COVID-19 which does not disrupt Gwinnett's standard in service provision
- A Funding Analysis was initiated to measure the impact and effectiveness of federal funds that have already been received to handle the pandemic, define what funding remains through 2023 and beyond, identify what additional resources will be allocated to Gwinnett through the American Rescue Plan Act (ARPA), and determine what additional State and Federal resources will be deployed to address the various needs defined
- An Infrastructure Analysis review of planned County projects examined eligibility for ARPA funding and assessed their impact in meeting community needs; and
- An Analysis of Underserved Areas/Service Gaps was conducted to help us focus our ARPA funds on inequities and underserved areas.

The Grants Management Division within the Department of Financial Services engaged with department directors, community partners, local governments and other county stakeholders to stay informed on community-wide needs and collaboratively work to define funding solutions for our leadership's consideration.

## Labor Practices

Gwinnett County knows that our communities are at a better advantage when they encourage competition that builds productivity and opportunity for high-skilled, higher wage labor workers. To that end, the County will ensure that workforce practices for SLFRF infrastructure include adherence to and completion of a Project Workforce Continuity Plan and Employment and Local Impact Reporting.

Through the completion of these documents, Gwinnett County, and its vendors, uphold that all wages earned are commensurate with similar construction jobs within the area to maintain adequate number of laborers to complete the job within a timely manner.

With the construction of OneStop Centerville and OneStop Gwinnett, the County is implementing fair labor practices which ensure competitive procurement in selecting a qualified builder and payment of equitable wages that align with prevailing pay rates established by the Davis-Bacon Act.

Gwinnett County will ensure that the benefits of introducing these facilities to the communities will see a large return on Fiscal Recovery Fund investment for the quality and quantity of service opportunities which will be made available. Both OneStop locations will expand access to existing housing, mental health, childcare, and other critical need service providers to County residents in areas that are most in need.

## Use of Evidence

County staff continue developing SLFRF programming based around evidence-based interventions which will be evaluated through program evaluations.

Gwinnett County will be employing moderate to strong level evidence-based intervention methods on the following projects categorized under Public Health Response, Negative Economic Impacts, and Services to Disproportionately Impacted Communities.

- **Public Health Response**
  - Category: 1.4: Prevention in Congregate Setting
    - 5420 – Public Health Infrastructure  
[Public Health infrastructure – Approach 1](#)  
[Public Health Infrastructure – Approach 2](#)
  - Category: 1.12: Mental Health Services
    - 5454 – COVID-19-Mental Health & Substance Abuse Crisis  
[Mental Health & Substance Abuse Crisis – Approach](#)
- **Negative Economic Impacts**
  - Category 2.1 – Household Assistance: Food Program
    - 5451 – COVID-Summer Meals Program  
[Summer Meals Program – Approach 1](#)  
[Summer Meals Program – Approach 2](#)

### Summer Meals Program – Approach 3

- Category: 2.10 Assistance to Unemployed and Underemployed Workers
  - 5421 – COVID-19-WD – Youth Engagement  
[Youth Engagement – Approach](#)
  - 5426 – COVID-19 Food Insecurity  
[Food Insecurity – Approach 1](#)  
[Food Insecurity – Approach 2](#)  
[Food Insecurity – Approach 3](#)
  - 5469 – COVID-19-Water Tower – Training & Development  
[Water Tower – Training & Development – Approach](#)
- Category: 2.14 Healthy Childhood Environments: Early Learning
  - 5437 – Early Childhood Learning & Literacy  
[Early Childhood Learning & Literacy – Approach](#)
- Category: 2.18 Housing Support: Other Housing Assistance
  - 5435 – COVID-19-Home Repairs Assistance Program  
[Home Repairs Assistance Program – Approach 1](#)  
[Home Repairs Assistance Program – Approach 2](#)
- Category: 2.19 Social Determinants of Health: Community Health Workers or Benefits Navigators
  - 5410 – Gwinnett County Community Navigators  
[Gwinnett County Community Navigators – Approach](#)
  - 5440 – COVID-19 Navigator Transit  
[COVID-19 Navigator Transit – Approach 1](#)  
[COVID-19 Navigator Transit – Approach 2](#)
  - 5441 – COVID-19 Navigator Transportation Voucher  
[COVID-19 Navigator Transportation Voucher – Approach 1](#)  
[COVID-19 Navigator Transportation Voucher – Approach 2](#)
  - 5442 – COVID-19 Transportation to Warming Centers  
[COVID-19 Transportation to Warming Centers – Approach](#)
  - 5455 – COVID-19 Veteran Support Services  
[COVID-19 Veteran Support Services – Approach](#)

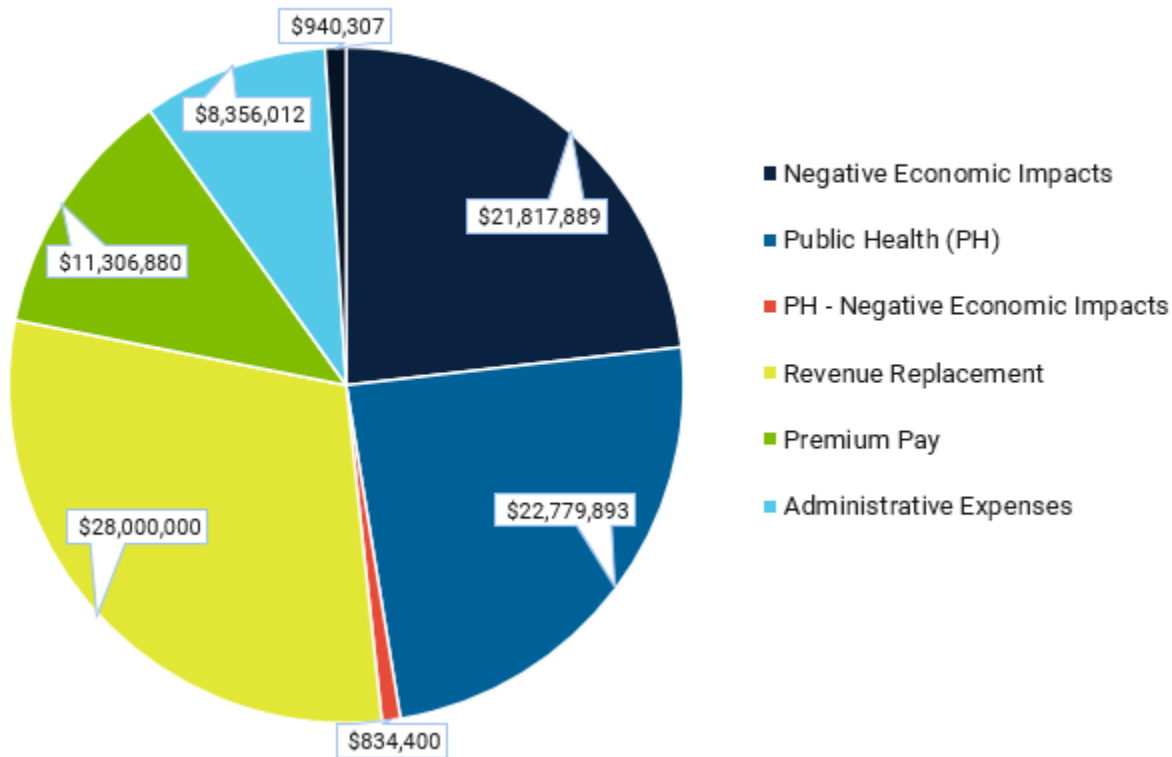
- Category: 2.37: Economic Impact Assistance: Other
  - 5408 & 5409 – Tax Commissioners Convenience Fee Waiver Program Coverage for Residents (Home & Ad Valorem) [Tax Commissioners Convenience Fee Waiver - Approach](#)
  - 5413 – COVID-19-Centerville OneStop [Centerville OneStop – Approach 1](#)  
[Centerville OneStop – Approach 2](#)
  - 5452 – COVID-19-Gwinnett OneStop [Gwinnett OneStop – Approach 1](#)  
[Gwinnett OneStop – Approach 2](#)

Further development of reporting strategies employed to maximize programmatic impact and effective, efficient, and equitable outcomes will be conveyed in our 2025 Recovery Plan Report.

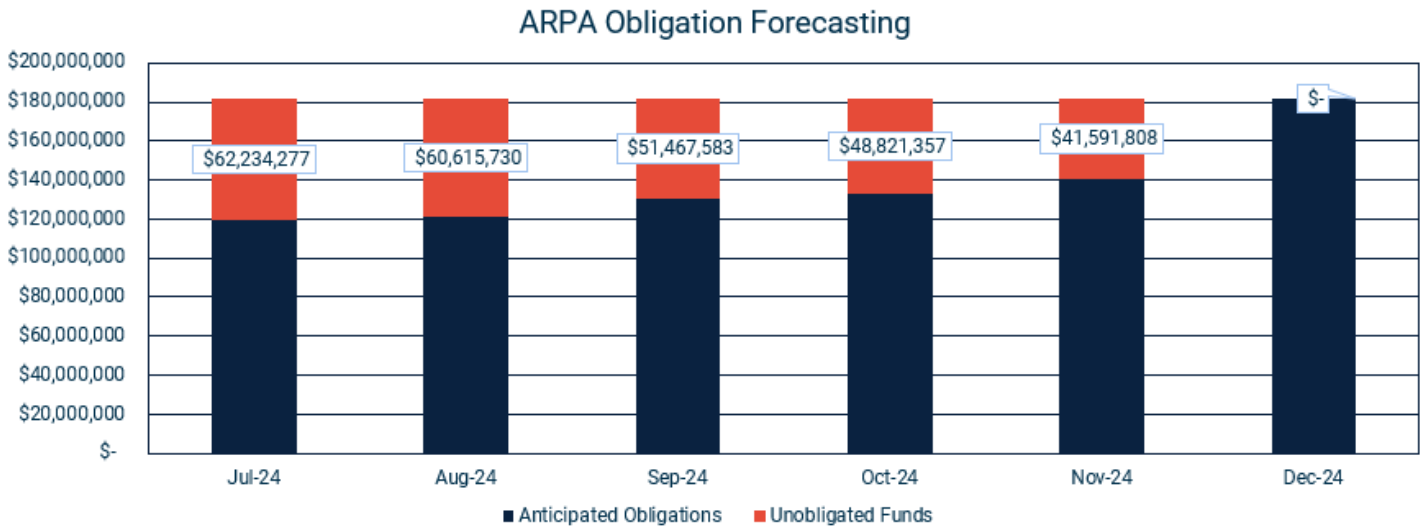
## Expenditure and Obligation Overview

Gwinnett County and its partner agencies have been working diligently to initiate and implement ARPA funded projects to facilitate impact throughout the community in response to community defined needs. To date, we have allocated 100% (\$181,855,587) of our CSLFRF award, expended \$94,035,381 (52%), and obligated an additional \$11,732,300 (6%). A high-level summary of our expenditures are provided in the CSLFRF Expenditures chart below.

**CSLFRF Expenditures**



We continue to evaluate project spend rates and have contingency plans in place to reallocate funds on slow spending projects to ensure that all valued funds are fully obligated ahead of the December 31, 2024 obligation deadline and expended ahead of the grant period end date. The ARPA Obligation Forecasting chart reflects the projection of incurred and actual costs which will carry us to a full obligation of our ARPA award by the December deadline.



### Table of Expense by Expenditure Category

Category		Cumulative expenditures to date (\$)	Amount spent since last Recovery Plan
1	Expenditure Category: Public Health	\$22,779,893.41	\$10,695,939.11
1.1	COVID-19 Vaccination	\$4,170,256.65	\$0.00
1.2	COVID-19 Testing	\$366,261.67	(\$989.75)
1.3	COVID-19 Contact Tracing		
1.4	Prevention in Congregate Settings (Nursing Homes, Prisons/Jails, Dense Work Sites, Schools, etc.)	\$21,224.00	\$21,224.00
1.5	Personal Protective Equipment	\$37,915.00	\$0.00
1.6	Medical Expenses (including Alternative Care Facilities)	\$1,250,658.50	\$0.00
1.7	Other COVID-19 Public Health Expenses (including Communications,	\$4,384,872.75	\$1,656,848.75

Category		Cumulative expenditures to date (\$)	Amount spent since last Recovery Plan
	Enforcement, Isolation/Quarantine)		
1.8	COVID-19 Assistance to Small Businesses^	\$7,000,000.00	\$7,000,000.00
1.9	COVID 19 Assistance to Non-Profits^	\$4,710,736.10	\$1,611,276.66
1.10	COVID-19 Aid to Impacted Industries^		
1.11	Community Violence Interventions**		
1.12	Mental Health Services**	\$837,968.74	\$407,579.45
1.13	Substance Use Services**		
1.14	Other Public Health Services^		
2	Expenditure Category: Negative Economic Impacts	\$21,817,888.78	\$15,131,000.24
2.1	Household Assistance: Food Programs	\$2,344,999.85	\$1,053,931.46
2.2	Household Assistance: Rent, Mortgage, and Utility Aid		
2.3	Household Assistance: Cash Transfers		
2.4	Household Assistance: Internet Access Programs		
2.5	Household Assistance: Paid Sick and Medical Leave^		
2.6	Household Assistance: Health Insurance**		
2.7	Household Assistance: Services for Un/Unbanked**		
2.8	Household Assistance: Survivor's Benefits^		
2.9	Unemployment Benefits or Cash Assistance to Unemployed Workers**		
2.10	Assistance to Unemployed or Underemployed Workers, (e.g., job training, subsidized employment, employment supports or incentives)	\$805,804.98	\$300,834.03
2.11	Healthy Childhood Environments: Child Care**		

Category		Cumulative expenditures to date (\$)	Amount spent since last Recovery Plan
2.12	Healthy Childhood Environments: Home Visiting <sup>*^</sup>		
2.13	Healthy Childhood Environments: Services to Foster Youth or Families Involved in Child Welfare System <sup>*^</sup>		
2.14	Healthy Childhood Environments: Early Learning <sup>*^</sup>	\$108,394.83	\$35,183.18
2.15	Long-term Housing Security: Affordable Housing <sup>*^</sup>		
2.16	Long-term Housing Security: Services for Unhoused Persons <sup>*^</sup>		
2.17	Housing Support: Housing Vouchers and Relocation Assistance for Disproportionately Impacted Communities <sup>*^</sup>		
2.18	Housing Support: Other Housing Assistance <sup>*^</sup>	\$1,800,000.00	\$1,151,114.08
2.19	Social Determinants of Health: Community Health Workers or Benefits Navigators <sup>*^</sup>	\$915,964.80	\$321,789.83
2.20	Social Determinants of Health: Lead Remediation <sup>*^</sup>		
2.21	Medical Facilities for Disproportionately Impacted Communities <sup>^</sup>		
2.22	Strong Healthy Communities: Neighborhood Features that Promote Health and Safety <sup>^</sup>		
2.23	Strong Healthy Communities: Demolition and Rehabilitation of Properties <sup>^</sup>		
2.24	Addressing Educational Disparities: Aid to High-Poverty Districts <sup>^</sup>		



Category		Cumulative expenditures to date (\$)	Amount spent since last Recovery Plan
2.25	Addressing Educational Disparities: Academic, Social, and Emotional Services**^		
2.26	Addressing Educational Disparities: Mental Health Services**^		
2.27	Addressing Impacts of Lost Instructional Time^		
2.28	Contributions to UI Trust Funds^		
2.29	Loans or Grants to Mitigate Financial Hardship^		
2.30	Technical Assistance, Counseling, or Business Planning**^		
2.31	Rehabilitation of Commercial Properties or Other Improvements^		
2.32	Business Incubators and Start-Up or Expansion Assistance**^		
2.33	Enhanced Support to Microbusinesses**^		
2.34	Assistance to Impacted Nonprofit Organizations (Impacted or Disproportionately Impacted)		
2.35	Aid to Tourism, Travel, or Hospitality^	\$1,383,011.02	\$1,107,639.11
2.36	Aid to Other Impacted Industries^	\$35,169.14	\$0.00
2.37	Economic Impact Assistance: Other**^	\$14,424,544.16	\$11,160,508.55
3	Expenditure Category: Public Health-Negative Economic Impact: Public Sector Capacity	\$834,400.31	\$664,324.25
3.1	Public Sector Workforce: Payroll and Benefits for Public Health, Public Safety, or Human Services Workers		

Category		Cumulative expenditures to date (\$)	Amount spent since last Recovery Plan
3.2	Public Sector Workforce: Rehiring Public Sector Staff		
3.3	Public Sector Workforce: Other		
3.4	Public Sector Capacity: Effective Service Delivery	\$834,400.31	\$664,324.25
3.5	Public Sector Capacity: Administrative Needs		
4	Expenditure Category: Premium Pay	\$11,306,880.17	\$96,916.18
4.1	Public Sector Employees	\$11,306,880.17	\$96,916.18
4.2	Private Sector: Grants to other employers		
5	Expenditure Category: Infrastructure	\$940,306.49	\$940,306.49
5.1	Clean Water: Centralized wastewater treatment	\$940,306.49	\$940,306.49
5.2	Clean Water: Centralized wastewater collection and conveyance		
5.3	Clean Water: Decentralized wastewater		
5.4	Clean Water: Combined sewer overflows		
5.5	Clean Water: Other sewer infrastructure		
5.6	Clean Water: Stormwater		
5.7	Clean Water: Energy conservation		
5.8	Clean Water: Water conservation		
5.9	Clean Water: Nonpoint source		
5.10	Drinking water: Treatment		
5.11	Drinking water: Transmission & distribution		
5.12	Drinking water: Transmission & distribution: lead remediation		
5.13	Drinking water: Source		
5.14	Drinking water: Storage		

Category		Cumulative expenditures to date (\$)	Amount spent since last Recovery Plan
5.15	Drinking water: Other water infrastructure		
5.16	Water and Sewer: Private Wells		
5.17	Water and Sewer: IIJA Bureau of Reclamation Match		
5.18	Water and Sewer: Other		
5.19	Broadband: "Last Mile" projects		
5.20	Broadband: IIJA Match		
5.21	Broadband: Other projects		
6	Expenditure Category: Revenue Replacement	\$28,000,000.00	\$0.00
6.1	Provision of Government Services	\$28,000,000.00	\$0.00
7	Administrative and Other	\$8,356,011.48	\$3,126,905.28
7.1	Administrative Expenses	\$8,356,011.48	\$3,126,905.28
7.2	Evaluation and data analysis		
7.3	Transfers to Other Units of Government		
7.4	Transfers to Non-entitlement Units (States and Territories only)		
TOTAL		\$94,035,380.64	\$30,655,391.55

## Project Inventory

A project inventory depicting details on projects active within the reporting period is provided on the following pages. The project descriptions denote: (1) overview of the main activities of the project; (2) approximated timeline; (3) primary delivery mechanisms and partners, if applicable; and (4) intended outcomes.

Project Name	Funding Amount	Identification Number	Expenditure Category	Project Description
Eastside Vaccination Site	\$4,170,256	5407	1.1: COVID-19 Vaccination	<i>(Completed)</i> Gwinnett County's operation of a vaccination site at Eastside Medical Center located at 1800 Tree Lane in Snellville, GA to ensure equitable vaccination coverage throughout the County. In addition to the administration of COVID-19 vaccines, this site facilitated targeted community outreach, engagement, and vaccination education to enhance the collective effort to raise awareness on the efficacy and efficiency of the vaccines offered.
Gwinnett County's Mass Vaccination Site	\$366,262	5419	1.2: COVID-19 Testing	<i>(Completed)</i> Gwinnett County Government and the Gwinnett, Newton, and Rockdale County Health Departments worked together to convert the bottom floor of the former Sears building at Gwinnett Place Mall into a mass vaccination center that accommodated immunizing up to 3,000 people a day. These funds were used to cover operational and maintenance costs for the mass vaccination site. In addition to the administration of COVID-19 vaccines, this site facilitated targeted community outreach, engagement, and vaccination education to enhance the collective effort to raise awareness on the efficacy and efficiency of the vaccines offered.
Public Health Infrastructure	\$21,224	5420	1.4: Prevention in Congregate Settings	<i>(Completed)</i> This Purchase Order is for design and CA services for the renovation of filtration systems at the Wellness Center in the Government Annex, Lawrenceville, Health Department at Central Services, OneStop Buford, and OneStop Norcross.
EQP Forklift PPE Distribution	\$37,915	5431	1.5: Personal Protective Equipment	<i>(Completed)</i> Gwinnett County Office of Emergency Management purchased a forklift to aid in loading and unloading personal protective equipment in the warehouse. The warehouse assists with more efficient storage and deployment of PPE when it is needed by Gwinnett County departments. Gwinnett County will continue to monitor cases of COVID-19 and adjust needs for PPE based on CDC guidance.
Medical Equipment to Enhance COVID-19 Care	\$75,659	5430	1.6: Medical Expenses	<i>(Completed)</i> Gwinnett County Fire & Emergency Services provides emergency medical services and fire protection to a population of almost 1 million residents. As part of their response-calls, department personnel will at times be responsible for transportation of citizens to medical and

Project Name	Funding Amount	Identification Number	Expenditure Category	Project Description
				critical care facilities in situations where they need immediate care. As first responders respond to situations where residents are sick with severe COVID-19 symptoms, losing oxygen and experiencing low heart rates, active monitoring is a necessity. This purchase of modems for cardiac monitors on county emergency vehicles assists the first responders in closely monitoring and providing better care for patients being transported to hospitals and other critical care facilities.
COVID-19 Medical Care Coverage	\$1,050,000	5438	1.6: Medical Expenses	<i>(Completed)</i> Gwinnett County Department of Human Resources and its partner for medical coverage services, Aetna, responded to medical needs of county employees and their family members who experienced severe COVID-19 symptoms and were hospitalized for treatment. Fiscal Recovery Funds were used to cover part of those medical expenses incurred by Gwinnett County. Gwinnett County is taking guidance from the Centers for Disease Control and Prevention, the state Department of Public Health, the Gwinnett-Rockdale-Newton County Health Department, and other agencies and will continue to procure resources to help our employees, their dependents, and our community to recover from the pandemic.
Mobile Clinic Expansion Project	\$250,000	5453	1.6: Medical Expenses	<i>(In Progress – 50% or more Completed)</i> Gwinnett County Government issued a subaward to Gwinnett County Public Health Department (GCPHD) to purchase a mobile clinic which has the flexibility to allow GCPHD and community partners go into the community and attempt to more comprehensively meet the needs of the vulnerable individuals living in our county. GCPHD's other mobile clinic was designed specifically to provide a nearly identical level of medical care that can be obtained in our health centers. This new clinic will focus less on medical treatment (e.g., examinations) but rather focus on conversations, and lower-level interventions (screenings, immunizations, and similar services).

Project Name	Funding Amount	Identification Number	Expenditure Category	Project Description
Gwinnett County's Vaccine Incentive Program	\$798,398	5412	1.7 Other COVID-19 Public Health Expenses (including Communications, Enforcement, Isolation /Quarantine)	<i>(Completed)</i> Gwinnett County's Vaccine Incentive Program was launched to encourage individuals to receive COVID-19 immunizations as recommended for various populations. Strategic outreach and engagement were implemented to effectively target vaccine hesitant populations. Events have occurred within vaccine hesitant communities with flexible hours of operation to maximize participation. Events were marketed through numerous outreach efforts. Flyers and social graphics were available in English, Spanish, Vietnamese, and Korean.
Prevention – Enhanced Cleaning Services	\$60,142	5428	1.7 Other COVID-19 Public Health Expenses (including Communications, Enforcement, Isolation /Quarantine)	<i>(Completed)</i> Gwinnett County Support Services prioritized continued enhanced cleaning and sanitization of county buildings and facilities through the height of the pandemic. The County increased the frequency in which floors, counters, and railings in high traffic areas of the courthouse and other frequently visited county-owned facilities were cleaned by the county's vendor to reduce the spread of COVID-19 infection.
Gwinnett County's Last Mile COVID Campaign	\$296,363	5418	1.7: Other COVID-19 Public Health Expenses (Including Communications, Enforcement, Isolation / Quarantine)	<i>(Completed)</i> Gwinnett County government's expenses for communication of public health orders and guidelines related to COVID-19. This includes Gwinnett County's Last Mile COVID Campaign which worked to raise awareness on the efficacy and efficiency of the vaccines offered. Flyers and social graphics were available in English, Spanish, Vietnamese, Korean, and Simplified Chinese. Ongoing community outreach and assessments facilitated continued engagement and enhanced targeting of vaccine hesitant populations to ensure equitable access to the vaccine.
Countywide Video Conferencing	\$2,799,855	5448	1.7: Other COVID-19 Public Health Expenses (Including Communications, Enforcement, Isolation / Quarantine)	<i>(In Progress – 50% or more Completed)</i> In response to the pandemic, Gwinnett County ITS deployed video conferencing capabilities to all remote users and added video conferencing to limited departments for mass communications to the public, Courts, and conference rooms. The need for video conferencing has expanded greatly during the pandemic, to increase public access to government meetings, services, and programs. This project expands the deployment of video conferencing hardware to county facilities, training locations and public safety locations. <i>This</i>

Project Name	Funding Amount	Identification Number	Expenditure Category	Project Description
				shift in operations requires a significant influx of new hardware, replacement of network equipment and funding outside of the normal budget process to achieve. After initial deployment, a sustainable program for lifecycle management and direct cost allocation financial practices will be included in the normal budgetary process beginning in 2023.
Public Facilities Enhancement – Mask Requirement Signage	\$10,362	5429	1.7 Other COVID-19 Public Health Expenses (including Communications, Enforcement, Isolation /Quarantine)	<i>(Completed)</i> On March 2, 2021, the Gwinnett County Board of Commissioners signed an ordinance that would require face coverings be worn in all facilities owned or leased by the county. Signage was purchased and installed using fiscal recovery funds for display in all public facilities to enforce county employees, residents, and visitors to wear a face covering which would deter the spread of COVID-19 in county facilities.
Countywide Dark Fiber	\$2,351,740	5446	1.7 Other COVID-19 Public Health Expenses (including Communications, Enforcement, Isolation /Quarantine)	<i>(In Progress – Less than 50% Completed)</i> In response to the pandemic, ITS increased the external access circuits to provide for additional capacity for workers operating outside of county facilities, increased use of video conferencing, and shifting workload due to public health safety guidance. Internal network circuits experienced a sharp increase in traffic due to video requiring the county to shift this traffic to privately owned fiber network to maintain operational capacity on data circuits. The lack of these dark fiber connections to all county facilities limits the operational capabilities of business units to deliver government programs and service to the public. The change in operations is specifically related to the public health needs caused by the pandemic. The rapid installation of the fiber infrastructure and associated equipment is necessary to achieve operational capacity at locations not currently connected. This requires a capital expenditure outside of normal operating budgets to achieve. Post installation, we can maintain the infrastructure and expand normally, in a sustainable manner within the normal revenue stream.
Network Lifecycle Replacement	\$2,926,353	5447	1.7 Other COVID-19 Public Health Expenses (including	<i>(In Progress – Less than 50% Completed)</i> In response to the pandemic, Gwinnett County shifted to more remote operations, which placed demand on the internal network systems to provide for additional capacity for remote



Project Name	Funding Amount	Identification Number	Expenditure Category	Project Description
			Communications, Enforcement, Isolation /Quarantine)	workers, increased video conferencing, and voice over Internet Protocol (VoIP) voice communications. Network switching equipment needs to be replaced to provide the added capacity to sustain business operations. Specifically, new high-capacity appliances will be procured to replace the aging appliances. The lack of these devices limits internal capacity and reduces the business unit's ability to deliver government programs and services to the public.
Application Testing	\$200,000	5449	1.7 Other COVID-19 Public Health Expenses (including Communications, Enforcement, Isolation /Quarantine)	<i>(Not Started)</i> The stress testing and automated testing software will enable IT and user departments to perform stress testing of software. In addition, the software also allows for configured scripts to be executed to automate software testing for bugs, issues, accuracy. This will decrease the amount of manual effort needed by multiple staff members for upcoming projects including Aumentum cloud lift, Aumentum replacement, SAP replacement.
Small Business R&R Program	\$7,000,000	5417	1.8: COVID-19 Assistance to Small Businesses	<i>(Completed)</i> The Gwinnett Small Business Grant offered economic support to small businesses in Gwinnett County that have been negatively impacted by the COVID-19 pandemic. The program awarded grants based on the number of employees, gross revenue, total applicant demonstration of COVID impact, funds available, as well as the number of applications received. Gwinnett served 1,075 small businesses through this grant program offering.
Non-Profit Target Areas	\$5,000,000	5473	1.9: COVID-19 Assistance to Non-Profits	<i>(In Progress – 50% or more Completed)</i> Gwinnett County has partnered with the United Way of Greater Atlanta to support the work of 47 distinct non-profit agencies to address needs related to Childcare (6 - \$445K), Food Security (14 - \$546K), Housing (17 - \$1.5M), Literacy (7 - \$480K), Mental Health (16 - \$1M), and Transportation (9 - \$262K). (The numbers in parenthesis represent the number of projects addressing each category of need and the dollars associated with each.) These agencies were selected based on scores from a panel of reviewers to select the programs that would make the most impact for the county with the resources available.

Project Name	Funding Amount	Identification Number	Expenditure Category	Project Description
Mental Health & Substance Abuse Crisis	\$1,000,000	5454	1.12: Mental Health Services	<i>(In Progress – 50% or more Completed)</i> Gwinnett County will provide financial support to View Point Health (VPH) to provide a substantial infusion of resources to help turn the tide of the pandemic, address its economic fallout, and lay the foundation for a strong and equitable recovery. The county has witnessed an increased demand for Behavioral Health Services due to anxiety and depression since the COVID-19 pandemic began, and this need is expected to last for the next few years. View Point Health operates as a safety-net provider, offering recovery-oriented services to the most-in-need individuals with mental health, addictive disease, and developmental disabilities. VPH serves individuals who are uninsured, underinsured, low-income Medicaid, aging/elderly Medicare, and veterans. The financial support is allocated to supplement rent and facility costs including utilities, telecommunications and maintenance for the next 3 years.
Food Insecurity	\$1,216,000	5426	2.1: Household Assistance: Food Programs	<i>(In Progress – 50% or more Completed)</i> Community Services will continue its programming and services offered to food insecure residents of Gwinnett County which was launched in 2020. This programming is designed to aid households struggling with food shortages.
Summer Meals Program	\$1,493,268	5451	2.1: Household Assistance: Food Programs	<i>(In Progress – 50% or more Completed)</i> During the public health emergency, food insecurity throughout Gwinnett County was exacerbated and the County and its partner agencies took immediate action to serve an increased need in our community through providing summer meals. During the 2023 summer meals season, 21 locations distributed 239,278 meals with the help of 642 volunteers. As the health emergency continues, the need to address food security remains especially in communities disproportionately impacted by the pandemic; a higher concentration of meal sites is in these areas through utilization of parks, libraries, and OneStops.

Project Name	Funding Amount	Identification Number	Expenditure Category	Project Description
Water Tower – Training & Development	\$237,520	5469	2:10: Assistance to Unemployed or Underemployed Workers	<i>(In Progress – 50% or more Completed)</i> COVID-19 caused devastating impacts to key industries, specifically service sector jobs, with the most vulnerable in retail trade and food services. The Water Tower (TWT), a water innovation campus that includes training, laboratory, and demonstration facilities in Gwinnett County, Georgia, is uniquely positioned to address these staffing and unemployment challenges resulting from the COVID-19 pandemic. TWT’s workforce programming focuses on outreach and recruitment, training, and placement in North Georgia geographical regions. Funding will be used for personnel, equipment, supplies and program service contractors to carry out training.
WD – Youth Engagement	\$745,485	5421	2.10: Assistance to Unemployed or Underemployed Workers	<i>(In Progress – 50% or more Completed)</i> Gwinnett County Government’s departments of Community Services and Human Resources are partnering with non-profit organizations including GUIDE, and Gwinnett County Public Schools to empower local students (ages 15-21) to jump-start their careers. The Career Starts Here: Gwinnett Empowering Youth comprehensive program will enhance leadership and teambuilding skills, impart financial literacy, career exploration, and offer the opportunity for youth to gain valuable workplace experience. Activities include training on resume writing, business etiquette, financial literacy, leadership, teambuilding, and exploration of different career opportunities within various County departments. Participants will receive a four-week paid internship to gain real world experience in an area of interest. In 2023, Career Starts Here hosted 90 interns with 86 graduating from the program.
Early Childhood Learning & Literacy	\$149,980	5437	2.14 Education Assistance: Early Learning	<i>(In Progress – 50% or more Completed)</i> Through the Building Brains (B2) Anywhere Program, the Gwinnett County Department of Community Services reduces the kindergarten readiness gap and increases academic success by providing free and accessible early learning opportunities throughout the county starting at birth through age eight in collaboration with community partners. B2 programming takes place in mobile units that travel to public spaces, community centers, apartment complexes, places of worship, libraries, childcare facilities, and other community

Project Name	Funding Amount	Identification Number	Expenditure Category	Project Description
				locations throughout the county. These mobile units provide literacy programming, STEAM enrichment, and hands-on activities for caregivers to help prepare children in their care to achieve academic success. In the last year alone, B2 Anywhere provided 1,584 afterschool sessions, serving a duplicated count of 35,509 students (the same students are served each day). The program also provided 175 early learning experiences, serving 11,027 children and 10,648 adult caregivers. B2 Anywhere also oversaw the county's 66 GREAT Little Minds Book Exchanges and distributed 62,347 early learning books across the County.
Affordable Housing	\$9,733,557	4227	2.15: Long-term Housing Security: Affordable Housing	<i>(Not Started)</i> Funding to facilitate the development of affordable housing units for households making at or below 65 percent of Area Median Income to help address the impacts from the COVID-19 pandemic. Eligible projects include land/building acquisition, new construction, rehabilitation of one or more existing buildings, preservation of existing affordable housing units and adaptive reuse of one or more nonresidential buildings.
Home Repairs Assistance Program	\$4,000,000	5435	2.18: Housing Support: Other Housing Assistance	<i>(In Progress – Less than 50% Completed)</i> Gwinnett County Water Resources has partnered with Gwinnett Habitat for Humanity to provide plumbing services, septic system repair, and water-saving appliances to low- and moderate-income qualified Gwinnett residents through the Water Resources Assistance Program (WRAP). Residents must own and reside in the home that repairs are being made to participate.
Navigator Transportation Voucher	\$5,434	5441	2.19: Social Determinants of Health: Community Health Workers or Benefits Navigators	<i>(In Progress – 50% or more Completed)</i> This contract provides for non-emergency transportation of Gwinnett County residents to health and human services programs.

Project Name	Funding Amount	Identification Number	Expenditure Category	Project Description
Transportation to Warming Stations	\$24,662	5442	2.19: Social Determinants of Health: Community Health Workers of Benefits Coordinators	<i>(In Progress – Less than 50% Completed)</i> This contract provides for Non-Emergency Transportation of Gwinnett County Residents to warming stations during harsh weather conditions.
Veterans Support Services	\$160,341	5455	2.19: Social Determinants of Health: Community Health Workers of Benefits Coordinators	<i>(In Progress – Less than 50% Completed)</i> Gwinnett County provides access to health and social services for veterans through the Health and Human Services Division of the Department of Community Services. This coordinated social service is delivered for all Gwinnett residents, not exclusive to veteran services specifically. Additional veteran services are met through government programs and community-based organizations. Veterans and their families will benefit from additional Coordinated Social Services, which support their unique needs within Social Determinants of Health. These needs include housing solutions, food security, continuing education, GI Bill loans, mental health, employment, medical services, legal advice, and other needs.
Gwinnett County Community Navigators	\$1,300,000	5410	2.19 Social Determinants of Health: Community Health Workers or Benefits Navigators	<i>(In Progress – 50% or more Completed)</i> Community navigators are responsible for fostering community relationship development with health, human, and social service community partners to best encompass the community-centric needs of that position's main site. The position will serve as the resource representative for citizens in each district area of the community to help navigate needs and issues such as food insecurity, homelessness and emergency housing, utility and rental assistance, and other targeted social needs emerging currently and in the future. Funding for this valued service will continue through December 31, 2024.
Navigator Transit	\$3,000	5440	2.19 Social Determinants of Health: Community Health Workers or Benefits Navigators	<i>(Completed)</i> This project assisted Gwinnett residents who require transportation to gain services that will address challenges such as homelessness, food insecurities, employment needs, and other social determinants of health measures. Social determinants of health are factors like housing, employment, environment, access to education and health care. These

Project Name	Funding Amount	Identification Number	Expenditure Category	Project Description
				challenges can affect individual and family outcomes. Transportation is a challenge to many residents who need reliable sources to travel for assistance.
NP Capacity Building & Operating Support	\$5,000,000	5424	2.34: Assistance to Impacted Nonprofit Organizations	<i>(Not Started)</i> Grant program to fund nonprofit capacity building. The objective is to increase the effectiveness and strength of local nonprofits to enhance their impact on our community. This may occur in the form of operational support or capital support.
Rebuilding Tourism, Arts & Entertainment	\$2,000,000	5416	2.35: Aid to Tourism, Travel or Hospitality	<i>(In Progress – 50% or more Completed)</i> It is vital to the Gwinnett tourism industry to be perceived as being safe, so this project will fund the leasing of additional FLOCK cameras with license plate readers at 110 hotels, as well as the Gas South District and Coolray Field to reduce crime in these areas. This project will also help create, support, and establish an innovative workforce readiness program, with a focus on underserved communities, BIPOC youth and young adults in Gwinnett County to prepare them for well-paying jobs in the entertainment industry.
Small Business Economic Support for Courthouse Café Vendor	\$35,169	5436	2.36: Aid to Other Impacted Industries	<i>(Completed)</i> Gwinnett County Department of Support Services oversees vendor operations where they apply to coverage of county owned building and facility operations. One of these operations is the provision of food services to the Gwinnett County Courthouse cafeteria. Due to court hearing delays and closures due to the pandemic, supply chain issues, and having to pay on average 26% in higher costs for supplies and ingredients, the Gwinnett County Courthouse Cafeteria vendor experienced a significant decrease in the amount of revenue it would typically receive when normal court proceedings occur. Fiscal Recovery funds were used as economic support for this small business vendor.
Tax Commissioners Convenience Fee Waiver Program	\$1,419,689	5408	2.37: Other Economic Support	<i>(Completed)</i> Gwinnett County Tax Commissioner's Convenience Fee Waiver Program was developed to provide economic support to the community by paying the convenience fees that the citizens would normally pay to use their debit or credit card while paying their property taxes online. In addition to providing economic support to the community through incentivizing online payments without additional charges, it also reduced in-



Project Name	Funding Amount	Identification Number	Expenditure Category	Project Description
				person payments which limited exposure and community-wide spread of COVID-19.
Centerville OneStop Expansion Project	\$25,000,000	5413	2.37: Economic Impact Assistance: Other	<i>(In Progress – 50% or more Completed)</i> Gwinnett County is committed to the ongoing development of quality service, programming, and resource support throughout the County. This project allows the County to expand its current Health and Human Services model and enhance community resource support in targeted underserved areas. These funds will be used to expand the Centerville OneStop location. The expansion of health and human services support will offer the County the opportunity to provide much needed services in public health, early learning, mental health, and family services that are necessary for sustaining the standard of Gwinnett excellence and creating a safe, livable, and healthy community.
Gwinnett OneStop	\$41,703,765	5452	2.37: Economic Impact Assistance: Other	<i>(In Progress – Less than 50% Completed)</i> The OneStop Gwinnett facility will act as a central hub for residents seeking resources related to shelter, food, employment, mental health, and more. As our residents enter the front doors of this HUB for human services, all can access a plethora of services, which meet their needs where they need it. The proposed expansion of the OneStop Gwinnett facility will be over 100,000 square feet (with an additional 6,000 square foot playground and infrastructure) multi-level facility that will provide organizational space for multiple internal and external community partners.
Warming Stations	\$349,068	5439	3.4: Housing Support: Other Housing Assistance	<i>(In Progress – 50% or more Completed)</i> To address the growing need for homeless services in Gwinnett County, the Department of Community Services oversees warming stations, utilizing current county facilities at 5 locations in the cities of Buford, Duluth, Lawrenceville, Norcross, and Snellville. Stations will provide residents with temporary shelter, sanitation facilities, food, supplies, and contact with staff in cases where additional assistance is required. Warming Stations offer a temporary solution for residents to enter a facility to relieve long term exposure to adverse elements. Generally, these are open



Project Name	Funding Amount	Identification Number	Expenditure Category	Project Description
				during overnight hours as many public facilities and alternative shelters are utilized during daytime hours. There are two seasons each year for Winter 2021-2023 (Early Winter - January – March; Late Winter October-December.)
TC Branch Security	\$103,826	5411	3.4: Public Sector Capacity: Effective Service Delivery	<i>(In Progress – 50% or more Completed)</i> Tax Commissioner has procured private vendors to provide security services at branch locations across Gwinnett County to ensure residents are able to safely, and securely, conduct in person business during the pandemic.
Comprehensive Human Service System Needs	\$350,000	5423	3.4: Public Sector Capacity: Effective Service Delivery	<i>(Completed)</i> Gwinnett County commissioned a study with the goal of conducting a needs assessment and strategic plan to develop a shared understanding of human services needs and current availability of assets. The study assessed the effectiveness of the system(s) by which services are delivered and accessed and equips leaders in Gwinnett County and key institutions across the community with accurate information. The study also lays the foundation for increased coordination and collaboration amongst participating entities. Ultimately, the community desires a more effective and equitable human services system to serve the citizens of Gwinnett County.
Disparity Study	\$415,000	5471	3.4: Public Sector Capacity: Effective Service Delivery	<i>(In Progress – Less than 50% Completed)</i> Gwinnett County reaffirmed their commitment to inclusivity and economic success by approving a contract to conduct the County's first disparity study. The primary objective of the study is to provide a comprehensive analysis of current and historical procurement and contracting data. The examination will identify any disparities or barriers that may exist within the County's purchasing and contracting policies and practices and ways to address them.
Gwinnett County Employees Premium Pay Program	\$11,209,964	5415	4.1: Public Sector Employees	<i>(Completed)</i> Gwinnett County authorized premium pay to qualified employees working in the field with a higher risk of severe illness from COVID-19. The premium pay program authorized non-exempt employees who work in field operations a 15% increase in pay and exempt employees who work in field operations a 7.5% increase in pay. Premium pay authorized for distribution was tied to the Governor's continuation of the Public

Project Name	Funding Amount	Identification Number	Expenditure Category	Project Description
				Health State of emergency, the current COVID-19 transmission rates in Gwinnett County, and distribution of the vaccine. Premium pay was distributed to eligible Gwinnett County employees January – June 2021.
Premium Pay & Retention Incentives	\$215,000	5432	4.1: Public Sector Employees	<i>(In Progress – Less than 50% Completed)</i> This project is a program coordinated through the Gwinnett County Human Resources Department which allocates ARPA Fiscal Recovery Funds for an employee referral program, job boards, job fair promotional items, and recruitment billboard advertisements to restore public sector capacity staffing.
Dam Rehabilitation Projects	\$10,000,000	5434	5.1: Clean Water: Centralized Wastewater Treatment	<i>(In Progress – Less than 50% Completed)</i> Dam Rehabilitation Projects are being utilized to perform necessary lifecycle maintenance on many dams operated and maintained by Gwinnett County. Some of these were constructed over 50 years ago. The scope of each project will address common maintenance needs associated with dams of this age to extend the lifecycle of elements associated with the dam's primary spillway. Additionally, each of the subject dams are classified as high hazard structures by the Georgia Safe Dams Program, meaning that if a dam were to fail it could lead to a loss of life downstream of the structure.
ARPA Revenue Loss – Provision of Government Services	\$28,000,000	5414	6.1: Provision of Government Services	<i>(Completed)</i> With Final Rule adjustments made to Treasury's guidance on revenue replacement calculations, Gwinnett County applied 100% of its revenue loss coverage section of the Local Fiscal Recovery Fund toward provision of Government services expense from its General Fund, Recreation Fund, and Local Transit Fund losses incurred in FY2020. An adjusted rate of growth at 5.231% occurred from FY2016 through the base year of FY2019. Projects that were supplemented with recovery funding have direct service impacts to Gwinnett residents. Three of the main facilities that experience heavy foot traffic and directly impact our residents are the Courthouse, One Justice, and Gwinnett Justice and Administration Center which are each experiencing their own renovation and elevator/escalator service needs. Another facility of great need is the Records Management Center. This facility houses records

Project Name	Funding Amount	Identification Number	Expenditure Category	Project Description
				<p>that are critical for safe-keeping and support the needs of our residents by ensuring these vital records are available as needed. The Harbins Road construction project in Lawrenceville, which directly impacts residents in a fast-growing part of Gwinnett was also chosen for assistance in addition to costs associated with administration of the 2022 Election cycle. From the Recreation Fund, Gwinnett County has selected the Harris Trail Greenway which will connect Tribble Mill Park in Lawrenceville to Harbins Park in Dacula, in addition to other maintenance projects and park operating costs since parks have a large impact on the health and well-being of our residents. Lastly, Recovery Funds are used for maintenance and enhancements of Gwinnett's Transit system operation vendor. Fare revenues have still not fully recovered from the COVID-19 pandemic so the support for this fund is crucial to keeping the transit system operating.</p>
IT Microsoft License	\$2,800,000	5443	7.1: Administrative Expenses	<p><i>(Completed)</i> In response to the pandemic, Gwinnett County shifted to more remote operations, which placed demand on the internal network systems to provide for additional capacity for remote workers, increased video conferencing, and Voice over Internet Protocol (VoIP) voice communications. The implementation of the Microsoft 365 Security Expansion – allowed the County to increase Microsoft Enterprise Mobility &amp; Security (EMS), Microsoft 365 Security and Microsoft 365 Compliance, subscriptions from E3 to E5. The lack of these licensing limits internal capacity and reduces the business unit's ability to deliver government programs and services to the public.</p>
IT Life Cycle Refresh	\$4,424,600	5444	7.1: Administrative Expenses	<p><i>(In Progress – 50% or more Completed)</i> In response to the pandemic, Gwinnett County shifted to more remote operations, which placed demand on the internal network systems to provide for additional capacity for remote workers, increased video conferencing, and Voice over Internet Protocol (VoIP) voice communications. Network switching equipment needs to be replaced to provide the added capacity to sustain business operations. Specifically, new high-capacity appliances will be procured to replace the aging appliances. The lack</p>

Project Name	Funding Amount	Identification Number	Expenditure Category	Project Description
				of these devices limits internal capacity and reduces the business unit's ability to deliver government programs and services to the public.
IT Desktop Lease Buyout	\$959,513	5445	7.1: Administrative Expenses	<i>(In Progress – 50% or more Completed)</i> The purpose of this buyout is to end leases on HP computers that are now or will soon be at end-of-life. This buyout will enable the IT department to complete the work that was begun using CARES act funding in 2020 and 2021 to refresh hardware with more current devices. Desktop computers are being replaced on a five-year cycle to ensure that employees can perform their jobs efficiently and effectively.
Program Admin	\$386,220	5461	7.1: Administrative Expenses	<i>(Completed)</i> REI Systems, Inc. will meet the County's grants management needs with its cloud-based, low code grants management platform - GovGrants. GovGrants is a full grants lifecycle solution. It provides completely online, web-enabled capabilities from planning, application, submission and collection, application review, award issuance, and tracking of post-award activities. It consolidates all grants business practices into one comprehensive online experience providing user-friendly dashboards and a myriad of reporting functions. REI Systems Inc. will provide implementation and project management services to facilitate the configuration and deployment of this new software solution and will provide training to support its launch.

## Projects

The chart provided on the following pages provides a high-level summary of the allocated funds as approved by Gwinnett County Board of Commissioners on September 21, 2021 (GCID 2021-1192) and adjusted as authorized.

**American Rescue Plan Act (ARPA)**  
**Coronavirus State and Local Fiscal Recovery Funds**

	<b>Amount</b>
	<b>181,855,587.00</b>
<b>Support Public Health Response</b>	<b>16,414,527.79</b>
<b>COVID-19 Public Health Response</b>	
<i>Vaccine Education &amp; Outreach</i>	296,362.86
<i>Mass Vaccination Site Facility Maintenance &amp; Operations (through 12.31.2022)</i>	366,261.67
<i>Eastside Vaccination Site Operations (through 12.31.2022)</i>	4,170,256.65
<i>Vaccination Incentive Program (\$100 gift cards, est. 2,500 served)</i>	798,397.50
<i>Gwinnett County Medical Costs</i>	1,050,000.00
<b>Public Health Infrastructure &amp; Equipment Enhancements</b>	21,224.00
<b>Mobile Clinic Expansion Project</b>	250,000.00
<b>Mental Health &amp; Substance Abuse Crisis Services</b>	1,000,000.00
<b>Other Gwinnett County Government Operational Needs</b>	
<i>Technology Enhancements</i>	8,277,947.96
<i>Equipment - Titan Modems for Cardiac Monitors</i>	75,658.50
<i>Public Facility Enhancements</i>	10,361.65
<i>Enhanced Cleaning Services</i>	60,142.00
<i>Equipment - Forklift for PPE Distribution</i>	37,915.00
<b>Replace Public Sector Revenue Loss</b>	<b>28,000,000.00</b>
<b>Government Services Affected by Revenue Reduction</b>	<b>28,000,000.00</b>
<b>Equity-Focused Services</b>	<b>6,274,408.40</b>
<b>Equity-Focused Service Provisions</b>	
<i>Veteran Support Services</i>	160,340.90
<i>Nonprofit Services - Target Areas</i>	5,000,000.00
<i>Warming and Cooling Stations for Temporary Shelter (2022 - 2024)</i>	349,067.50
<b>Comprehensive Human Services Systems Needs Assessment</b>	350,000.00
<b>Disparity Study</b>	415,000.00
<b>Address Negative Economic Impacts</b>	<b>91,437,797.63</b>
<b>Rebuilding Tourism, Arts &amp; Entertainment</b>	2,000,000.00
<b>Small Business Recovery &amp; Restart Program</b>	7,000,000.00
<b>Workforce Development</b>	
<i>Youth Engagement</i>	745,485.44
<i>Job Training &amp; Development</i>	237,520.00
<b>Nonprofit Capacity Building &amp; Operating Support</b>	5,000,000.00
<b>Food Insecurity</b>	2,709,268.44
<b>Early Childhood Learning &amp; Literacy</b>	149,979.69
<b>Transportation Services</b>	33,095.92

**American Rescue Plan Act (ARPA)**  
**Coronavirus State and Local Fiscal Recovery Funds**

	<b>Amount</b>
<b>Project</b>	<b>181,855,587.00</b>
<b>Address Negative Economic Impacts (Continued)</b>	<b>91,437,797.63</b>
<b>Other Gwinnett County Government Operational Needs</b>	
<i>Tax Commissioner Convenience Fees Waiver Program</i>	<b>1,419,688.50</b>
<i>Community Navigator Program</i>	<b>1,300,000.00</b>
<i>Branch Security Costs - Tax Commissioner</i>	<b>103,825.95</b>
<i>Cafeteria Small Business Subsidy Support</i>	<b>35,169.14</b>
<b>Home Repairs Assistance Program</b>	<b>4,000,000.00</b>
<b>Facility &amp; Service Provisions</b>	
<i>Centerville One Stop</i>	<b>25,000,000.00</b>
<i>Gwinnett One Stop</i>	<b>41,703,764.55</b>
<b>Premium Pay for Essential Workers</b>	<b>11,424,963.99</b>
<b>Recruitment Incentives for Essential County Workers</b>	<b>215,000.00</b>
<b>Hazard Pay (Paid out to County employees 1.1.2021 - 6.11.2021)</b>	<b>11,209,963.99</b>
<b>Water, Sewer &amp; Stormwater Infrastructure</b>	<b>10,000,000.00</b>
<b>Dam Rehabilitation Projects</b>	<b>10,000,000.00</b>
<b>Affordable Housing</b>	<b>9,733,556.56</b>
<b>Affordable Housing Projects</b>	<b>9,733,556.56</b>
<b>Program Administration</b>	<b>8,570,332.63</b>
<b>Program Administration</b>	<b>386,219.72</b>
<b>Technology Enhancements</b>	<b>8,184,112.91</b>