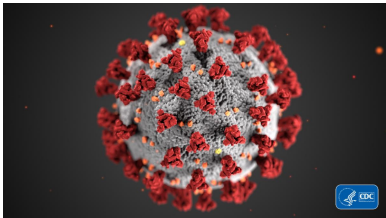


NEWS

for Neighborhoods

A newsletter for Gwinnett County homeowners

May 22, 2020



Greetings!

Gwinnett County Government is monitoring developments in the spread of the coronavirus outbreak and how it may affect our residents, employees, and our delivery of important County services.

We are following the most up-to-date guidance from the Gwinnett-Newton-Rockdale County Health Departments, the state Department of Public Health, and the Centers for Disease Control and Prevention.

As the COVID-19 pandemic [impacts County services](#) in different ways, residents and business owners are encouraged to take advantage of the many [online services](#) provided by the County.

Remember to take preventive actions to prevent the spread of respiratory disease, including putting at least six feet of distance between yourself and others when in public, [wearing a cloth face covering](#) as much as possible, avoiding contact with people who are sick, practicing [coughing and sneezing etiquette](#), avoiding touching your eyes, nose, and mouth, [washing your hands thoroughly and regularly](#), and disinfecting frequently touched objects and surfaces with a regular household cleaning spray or wipe. Learn more about how to protect yourself on the [CDC's Prevention & Treatment page](#).

Public Health State of Emergency in place through June 12

On Tuesday, May 12, Governor Kemp issued additional guidance on reviving a healthy Georgia, extending many precautions and guidelines through the end of the month. Though the Shelter-in-Place Order expired for most Georgians May 1, Governor Kemp continues to urge Georgians to stay home whenever possible and practice social distancing.



Businesses must continue to operate with social distancing and sanitation rules to keep customers and staff safe through May 31, 2020. The state has provided [guidance](#) to help businesses understand restrictions and requirements for operating during this time. Bars, nightclubs, live performance venues, and operators of amusement park rides must remain closed through May 31.

On April 30, Governor Kemp issued an [executive order](#) extending the Public Health State of Emergency through June 12, 2020. As part of this executive order, elderly and medically fragile residents must continue to shelter in place through June 12. Long-term care facilities are also ordered to use enhanced infection control protocols during this time.

Gwinnett honors fallen heroes in virtual Memorial Day ceremony May 25



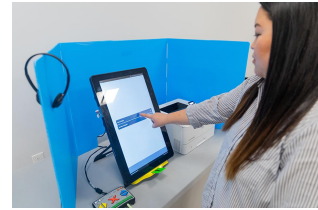
Because of the ongoing COVID-19 pandemic, Gwinnett County Government will commemorate America's fallen military and law enforcement heroes with a virtual Memorial Day ceremony on Memorial Day, May 25. Board of Commissioners Chairman Charlotte Nash, District 4 Commissioner Marlene Fosque, and Ron and Carolyn Buice of the Gwinnett Fallen Heroes Memorial Committee delivered video remarks. Retired Marine Col. Parker Miller was the keynote speaker. Miller is a Vietnam veteran who now serves as senior vice president of Curtiss-

Wright. The ceremony can be viewed online beginning at 1:00pm at [TVgwinnettlive.com](#), on the County's [Facebook](#) and [Twitter](#) pages @GwinnettGov and on the County's [Vimeo page](#).

Multiple options to cast your ballot for the June 9 elections

Voters are not limited to Election Day to cast their ballot in the June 9 Presidential Preference Primary, General Primary, and Nonpartisan Election.

Eligible voters may vote advance in person every day, including weekends, through June 5 at **the Gwinnett Voter Registrations and Elections Beauty P. Baldwin Building**, located at 455 Grayson Highway in Lawrenceville. The office is open for advance voting Monday through Saturday from 8:00am to 5:00pm and Sunday from noon to 7:00pm.



Voters can also cast their ballots advance in person every day, including weekends, through June 5 at the **Gwinnett County Fairgrounds**, located at 2405 Sugarloaf Parkway in Lawrenceville (use the Davis Road entrance) Monday through Saturday from 7:00am to 7:00pm and Sunday from noon to 7:00pm.

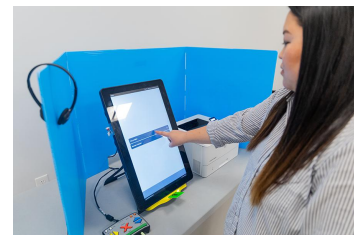
Satellite voting will be offered daily from Saturday, May 30 through Friday, June 5 from 7:00am to 7:00pm at [four satellite locations](#).

To check the status of your voter registration and see a sample ballot, visit My Voter Page at mvp.sos.ga.gov. For more information or to stay up-to-date with elections in Gwinnett, follow @GwinnettGov on [Facebook](#), [Twitter](#), and [Instagram](#) or visit GwinnettElections.com.

Múltiples opciones para emitir su voto para las elecciones del 9 de Junio

Los votantes no están limitados al Día de las Elecciones para emitir su voto en las elecciones Primarias de Preferencia Presidencial, Primarias Generales y No Partidistas del 9 de Junio.

Los votantes elegibles pueden votar por adelantado en persona todos los días hasta el 5 de Junio de 8:00am a 5:00pm en el edificio de **Inscripción de Electores y Elecciones de Gwinnett Beauty P. Baldwin**. La oficina está abierta para la votación anticipada de lunes a sábado de 8:00am a 5:00pm y los domingos de mediodía a 7:00pm.



Los votantes también pueden emitir sus boletas por adelantado en persona todos los días, incluidos los fines de semana, hasta el 5 de Junio en el **Recinto Ferial del Condado de Gwinnett** ubicado en 2405 Sugarloaf Parkway en Lawrenceville (use la entrada de Davis Road) de lunes a sábado de 7:00am a 7:00pm y Domingo del mediodía a las 7:00pm.

La votación por satélite se ofrecerá diariamente desde el Sábado 30 de Mayo hasta el viernes 5 de Junio de 7:00am a 7:00pm en [cuatro ubicaciones satélite](#).

Para verificar el estado de su inscripción electoral y ver una boleta de muestra, visite My Voter Page en mvp.sos.ga.gov. Para más información o mantenerse al día con las elecciones en Gwinnett, siga a @GwinnettGov en [Facebook](#), [Twitter](#), and [Instagram](#) o visite GwinnettElections.com.

Support local farmers with Georgia Grown To Go event at Coolray Field May 27



Residents will have the chance to support local farmers by purchasing fresh produce and other food items at a Georgia Grown To Go drive-thru farmer's market May 27 from 3:00pm to 7:00pm at Coolray Field. The event is rain or shine and while supplies last.

Georgia Grown, an initiative of the Georgia Department of Agriculture, is partnering with Gwinnett County Government, Live Healthy Gwinnett, the Gwinnett Stripers, Explore Gwinnett, and Gwinnett Cares to host the [event](#). Pre-order boxes for a reduced rate [online](#) until

noon Tuesday, May 26. Orders will be available for contactless pickup at the event site, and a limited supply of items will be available for same day purchase on a first-come, first-served basis.

Coolray Field is located at 2500 Buford Drive in Lawrenceville. Visit GeorgiaGrownToGo.com to learn more and place an order.

Official drop boxes available for absentee/advance by mail ballots

Eight official ballot drop boxes are now in place across Gwinnett County to provide eligible voters with a new way to return absentee/advance by mail ballots for the June 9 Presidential Preference Primary, General

Primary, and Nonpartisan Election. No postage is necessary on ballots placed in the drop boxes. The secure drop boxes are monitored by video and available 24/7 at these locations:

- [Bogan Park Community Recreation Center](#), 2723 North Bogan Road, Buford
- [Dacula Park Activity Building](#), 2735 Old Auburn Avenue, Dacula
- [George Pierce Park Community Recreation Center](#), 55 Buford Highway, Suwanee
- [Lenora Park Gym](#), 4515 Lenora Church Road, Snellville
- [Lucky Shoals Park Community Recreation Center](#), 4651 Britt Road, Norcross
- [Mountain Park Aquatic Center](#), 1063 Rockbridge Road, Stone Mountain
- [Shorty Howell Park Activity Building](#), 2750 Pleasant Hill Road, Duluth
- Voter Registrations and Elections Beauty P. Baldwin Building, 455 Grayson Highway, Suite 200 Lawrenceville



Buzones oficiales disponibles para boletas de voto ausente o adelantado por correo

Ocho buzones de boletas oficiales ahora están colocados en todo el condado de Gwinnett para proporcionar a los votantes elegibles una nueva forma de devolver las boletas de voto ausente o adelantado por correo para las elecciones Primarias de Preferencia Presidencial, Primarias Generales, y No Partidistas del 9 de Junio. No se requiere franqueo en las boletas depositadas en los buzones. Los buzones seguros se monitorean por video y están disponibles las 24 horas, los 7 días de la semana en estos lugares:



- [Bogan Park Community Recreation Center](#), 2723 North Bogan Road, Buford
- [Dacula Park Activity Building](#), 2735 Old Auburn Avenue, Dacula
- [George Pierce Park Community Recreation Center](#), 55 Buford Highway, Suwanee
- [Lenora Park Gym](#), 4515 Lenora Church Road, Snellville
- [Lucky Shoals Park Community Recreation Center](#), 4651 Britt Road, Norcross
- [Mountain Park Aquatic Center](#), 1063 Rockbridge Road, Stone Mountain
- [Shorty Howell Park Activity Building](#), 2750 Pleasant Hill Road, Duluth
- Voter Registrations and Elections Beauty P. Baldwin Building, 455 Grayson Highway, Suite 200 Lawrenceville

Gwinnett expanding summer meals program for kids

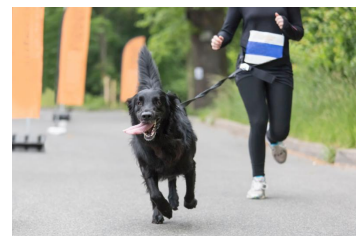


Gwinnett County, Gwinnett County Public Schools, and Gwinnett Public Library are teaming up to help ease hardships during the COVID-19 pandemic by continuing to feed Gwinnett's children during the summer. This program offers free grab-and-go breakfasts and lunches for children 18 years old and younger. Parents can pick up nutritious meals for their children at [18 park locations](#) to take home or children can pick up their own meals. Participating [library branches](#) are the Lawrenceville Branch and Snellville Branch of the Gwinnett Public Library starting May 27.

Registration is not required. Meals can be picked up Monday through Friday between 11:00am and 1:00pm while supplies last. For more information, visit GwinnettSummerMeals.com or call 770.822.8840.

Adoption and foster appointments available at the Gwinnett Animal Shelter

The Animal Shelter is now offering [online adoption and foster applications](#) at GwinnettAnimalWelfare.com. Those who have completed the online application can set up a one-hour meet-and-greet appointment with up to three available pets. Appointments are available Monday through Thursday from noon to 5:00pm and Friday and Saturday from 11:00am to 3:00pm. Visitors are encouraged to follow CDC prevention recommendations, including wearing a face covering; gloves will be provided upon arrival.



To make an appointment to be reunited with a lost pet or to report a stray or injured pet, please call 770.339.3200. Residents are encouraged to hold onto stray animals if possible to permit the owner time to locate their lost pet. Owner surrenders are by appointment only.

There's still time to participate in the 2020 Census

More than 60 percent of Gwinnett's residents have already completed the 2020 Census, but we need your help to ensure



everyone is counted. The census helps shape representation in government and influences federal and state governments' decisions about how to distribute funding and resources. It also informs plans for roads, hospitals, and new businesses. If you have not filled it out, there's still time. Complete your questionnaire online at [My2020Census.gov](https://my2020census.gov), by mail, or by phone today.

Water Resources reopens lobby for customers

The Department of Water Resources has reopened its Customer Care walk-in facility located at 684 Winder Highway in Lawrenceville. To protect visitors and employees, several safety precautions have been implemented to preserve social distancing protocols. While the lobby is now open, customers are still encouraged to use phone, online, and drive-thru services as alternatives to entering the facility. Customers should contact the Water Resources Customer Care team directly for account options if they have been impacted by COVID-19 and are having difficulty paying their bill. Please call a team member at 678.376.6800.



Visit our website, social media for latest COVID-19 news

To stay up-to-date on the County's response to the COVID-19 pandemic, visit our website, GwinnettCounty.com or follow us on [Facebook](#), [Twitter](#), and [Instagram](#) @GwinnettGov.



Communications Division
770.822.7180
www.gwinnettcounty.com

Follow us on

