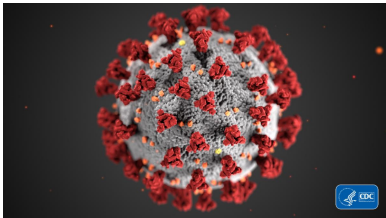


NEWS

for Neighborhoods

A newsletter for Gwinnett County homeowners

June 3, 2020



Greetings!

Gwinnett County Government is monitoring developments in the spread of the coronavirus outbreak and how it may affect our residents, employees, and our delivery of important County services.

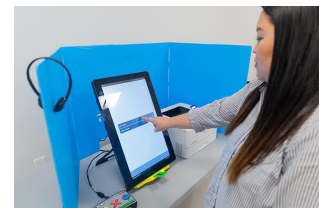
We are following the most up-to-date guidance from the Gwinnett-Newton-Rockdale County Health Departments, the state Department of Public Health, and the Centers for Disease Control and Prevention.

As the COVID-19 pandemic [impacts County services](#) in different ways, residents and business owners are encouraged to take advantage of the many [online services](#) provided by the County.

Remember to take preventive actions to prevent the spread of respiratory disease, including putting at least six feet of distance between yourself and others when in public, [wearing a cloth face covering](#) as much as possible, avoiding contact with people who are sick, practicing [coughing and sneezing etiquette](#), avoiding touching your eyes, nose, and mouth, [washing your hands thoroughly and regularly](#), and disinfecting frequently touched objects and surfaces with a regular household cleaning spray or wipe. Learn more about how to protect yourself on the [CDC's Prevention & Treatment page](#).

Advance in person voting still available

There's still time to cast your ballot before the June 9 election. Eligible voters may vote advance in person every day through June 5 at the Gwinnett Voter Registrations and Elections Beauty P. Baldwin Building, located at 455 Grayson Highway in Lawrenceville. The office is open for advance voting from 8:00am to 5:00pm.



Voting is available at the Gwinnett County Fairgrounds and four other locations around the county through June 5 from 7:00am to 7:00pm. The Gwinnett County Fairgrounds is located at 2405 Sugarloaf Parkway in Lawrenceville (use the Davis Road entrance). The four additional satellite locations are:

- [Bogan Park Community Recreation Center](#), 2723 North Bogan Road, Buford
- [George Pierce Park Community Recreation Center](#), 55 Buford Highway, Suwanee
- [Lenora Park Gym](#), 4515 Lenora Church Road, Snellville
- [Lucky Shoals Park Community Recreation Center](#), 4651 Britt Road, Norcross

El voto por adelantado en persona todavía está disponible

Todavía hay tiempo para emitir su voto antes de las elecciones. Los votantes elegibles pueden votar por adelantado en persona todos los días hasta el 5 de Junio en el edificio de Inscripción de Electores y Elecciones de Gwinnett Beauty P. Baldwin, ubicado en 455 Grayson Highway en Lawrenceville. La oficina está abierta para la votación adelantada de 8:00am a 5:00pm.

La votación está disponible en el Recinto Ferial del condado de Gwinnett y en otros cuatro lugares del condado hasta el 5 de Junio de 7:00am 7:00pm. El Recinto Ferial del condado de Gwinnett está ubicado en 2405 Sugarloaf Parkway en Lawrenceville (use la entrada de Davis Road). Las cuatro ubicaciones satélite adicionales son:

- [Bogan Park Community Recreation Center](#), 2723 North Bogan Road, Buford
- [George Pierce Park Community Recreation Center](#), 55 Buford Highway, Suwanee
- [Lenora Park Gym](#), 4515 Lenora Church Road, Snellville
- [Lucky Shoals Park Community Recreation Center](#), 4651 Britt Road, Norcross

Election Day voting next week!



The Presidential Preference Primary, General Primary, and Nonpartisan Election will take place Tuesday, June 9 at your regular polling location from 7:00am to 7:00pm. The main Elections Office is not a polling location on Election Day. To find your polling location or view a sample ballot, visit the Georgia Secretary of State's [My Voter Page](#). Election results will be available on the County's website, [GwinnettElections.com](#), after polls close on Election Day.

¡Votación del Día de las Elecciones la próxima semana!

Las elecciones Primarias de Preferencia Presidencial, Primarias generales y No Partidistas se llevarán a cabo el Martes 9 de Junio en su lugar de votación habitual de 7:00am a 7:00pm. La Oficina Principal de Elecciones no es un lugar de votación en el Día de las Elecciones. Para encontrar su lugar de votación o ver una boleta de muestra, visite [My Voter Page](#) de la Secretaría de Estado de Georgia. Los resultados de las elecciones estarán disponibles en el sitio web del condado, [GwinnettElections.com](#), después de que se cierren las centros de votación en el Día de las Elecciones.

Gwinnett emergency dispatch now taking text messages

The Gwinnett 911 Center is now equipped to receive and respond to mobile phone SMS text messages for situations where it is too dangerous to make a voice call to 911, and for people who are deaf, hard of hearing, or speech impaired.

Text to 911 is intended primarily for use in three emergency scenarios:

- For an individual who is deaf, hard-of-hearing, or has a speech disability
- For someone who is in a situation where it is not safe to place a voice call to 911
- A medical emergency that renders the person incapable of speech



For more information about this service, please visit [Gwinnett Communications/E911 page](#).

Gwinnett expanding Summer Meals program for kids



Gwinnett County, Gwinnett County Public Schools, and Gwinnett Public Library are teaming up to help ease hardships during the COVID-19 pandemic by continuing to feed Gwinnett's children during the summer. This program offers free grab-and-go breakfasts and lunches for children 18 years old and younger. Parents can pick up nutritious meals for their children at [18 park locations](#) to take home, or children can pick up their own meals. Participating [library branches](#) are the Lawrenceville Branch and Snellville Branch of the Gwinnett Public Library. Registration is not required. Meals can be picked up Monday through Friday between 11:00am and 1:00pm while supplies last. For more information, visit [GwinnettSummerMeals.com](#) or call 770.822.8840.

Census self-response deadline extended until October 31

The Census Bureau has extended the time for filling out the national survey until October 31, so if you haven't participated, there's still time. The Census is incredibly important to Gwinnett as census data is used by businesses, the federal government, the state government, and other agencies in determining how many and what kinds of resources Gwinnett receives, including legislative and congressional representation. Your private information is confidential by law and can't be shared with any other agency. You can also fill it out by phone or online. To complete the census, visit [My2020Census.gov](#).

United States
Census
2020

Get your groceries and renew your vehicle tag



While at Kroger stocking up on groceries, you can also renew your vehicle tag and walk away with your decal in hand. Tax Commissioner kiosks are located in Kroger stores throughout the metro Atlanta area, and you can renew your tag at any of them, even if they are outside Gwinnett County. For information about Kroger kiosk locations, hours,

and requirements, please visit [GwinnettTaxCommissioner.com/Locations](https://www.gwinnetttaxcommissioner.com/locations). Convenience fees apply.

Visit our website, social media for latest COVID-19 news

To stay up-to-date on the County's response to the COVID-19 pandemic, visit our website, [GwinnettCounty.com](https://www.gwinnettcountry.com) or follow us on [Facebook](#), [Twitter](#), and [Instagram](#) @GwinnettGov.



Communications Division
770.822.7180
www.gwinnettcountry.com

Follow us on

