

You're receiving this email because of your interest in receiving information from Gwinnett County. Don't forget to add gccommunications@gwinnettcountry.com to your address book so we'll land in your inbox!

You may [unsubscribe](#) if you no longer wish to receive our emails.



October 12, 2012

In this issue:

[Advanced voting](#)

[2012 property taxes due](#)

[Burn ban ends](#)

[New Gwinnett L.I.F.E](#)

[Parks public meetings](#)

[Start saving your junk](#)

[Rabies alert](#)

Dear Emily:

As a resident of Gwinnett County, you know there is always a lot going on in the community.

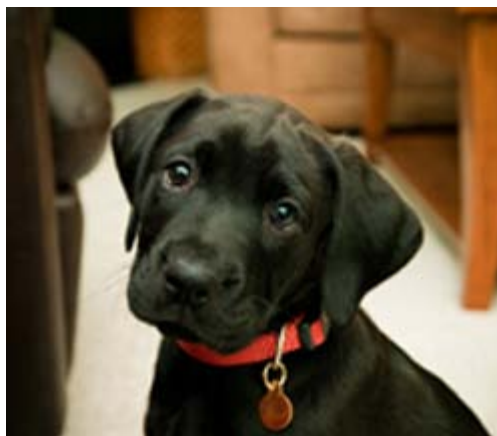
[Gwinnett County Government](#) would appreciate your help keeping your neighbors informed by sharing the following information through your homeowner association newsletter, website, and emails and by talking to your friends and family.



It's always Black Friday at the Animal Welfare Center

Every Friday is Black Friday at the Gwinnett Animal Welfare and Enforcement Center! All mostly black dogs and cats are available at the center for only a \$30 cash veterinarian fee. The fee includes spaying or neutering, the first round of vaccinations, and a microchip.

For information, visit www.gwinnettanimalcontrol.com or call 770.339.3200. You can also stop by the center from 10:00am to 4:00pm, Tuesday through Saturday. The center is located at 884 Winder Highway in Lawrenceville.



Beat the lines this November and vote advance or absentee

The General Election will take place on Tuesday, November 6 from 7:00am to 7:00pm at regular voting precincts, however, registered voters in Gwinnett County have a variety of options for casting their ballots prior to the election. Voters may request an absentee ballot by [completing an application](#) or calling 678.226.7210. Completed applications can be mailed to the Elections Office, faxed to 678.226.7209, or emailed to absentee@gwinnettcountry.com.

Advanced voting

Voters may also cast their ballots in person from October 15 to November 2, Monday through Friday, 8:00am to 5:00pm at the Gwinnett County Elections Office, located at 455 Grayson Highway in Lawrenceville. In addition, [satellite voting locations](#) will be open October 29 to November 2, 9:00am to 7:00pm at the Centerville Community



Center in Snellville, George Pierce Park Community Recreation Center in Suwanee, Dacula Park Activity Building in Dacula, and Lucky Shoals Park Community Recreation Center in Norcross.

Saturday voting will be available at the Elections Office and satellite voting locations on October 27, 9:00am to 4:00pm.

To view a consolidated ballot for the election, visit the [Sample Ballots](#) webpage.

If you have additional questions about the November General Election, visit www.gwinnettelelections.com.

2012 Property Tax Bills due Monday

Reminder! Property tax payments for 2012 are due on October 15. There are several options for paying your property taxes:

- Pay online by check or credit card at www.GwinnettTaxCommissioner.com (Paying by check is free; convenience fees apply for credit card transactions.)
- Mail payments to P.O. Box 372, Lawrenceville, GA 30046
- Pay by check using drop boxes 24 hours a day at all Tax Commissioner offices
- Pay in person during business hours at all Tax Commissioner offices.



For property owners with an escrow account, tax information will be made available to the mortgage company; however, it is ultimately the responsibility of the property owner to ensure taxes are paid by the due date. If there are questions about who will pay the taxes, homeowners should contact their mortgage company directly, especially if their mortgage company has recently changed. For more information, contact the office at Tax@gwinnettcountry.com or 770.822.8800.

Outdoor burn ban ends

The annual summertime ban on outdoor burning in Gwinnett ended on October 1. Outdoor burning is a significant contributor of pollutants that can form unhealthy levels of ozone in the air we breathe.

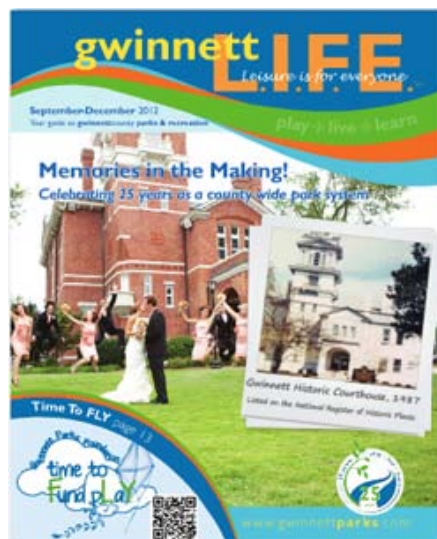
Gwinnett residents who want to burn should follow the County ordinance restrictions that cover all outdoor burning. Complete information about outdoor burning can be found at www.gwinnettfire.org or you contact the Gwinnett County Fire Marshal's office at firemarshal@gwinnettcountry.com or 678.518.4980.

Fall edition of Gwinnett L.I.F.E. now available

Gwinnett L.I.F.E., the Parks and Recreation program guide, puts fun at your fingertips. It's 40 pages of information on special events, classes, and activities, giving you the chance to play, live, and learn throughout Gwinnett County.

Check out the [virtual edition](#) or pick up a copy at Gwinnett Parks and Recreation facilities, Gwinnett libraries, Gwinnett Chamber of Commerce, Gwinnett Convention and Visitor's Bureau, or the Gwinnett Justice and Administration Center.

Go green and [sign up for e-alerts](#) to know when the next edition is available.



Parks and Recreation holds public input meetings

Gwinnett County Parks and Recreation has scheduled public meetings for Gwinnett residents to give their input on the 2013 Capital Improvement Plan Update. This update will build on the 2007 Parks and Recreation Capital Improvement Plan. For more information about these meetings, contact Rex Schuder at 770.822.8864 or rex.schuder@gwinnettcountry.com.

Tuesday, October 16: 2:00pm - 4:00pm
Bethesda Park Senior Center, 225 Bethesda Church Road in Lawrenceville

Monday, October 22: 7:30pm - 9:00pm
George Pierce Park Community Recreation Center, 55 Buford Highway in Suwanee

Save your stuff for America Recycles Day: November 17

Come celebrate America Recycles Day with the Gwinnett County Solid Waste and Recovered Materials Division on Saturday, November 17 from 9:00am to noon at Coolray Field, home of the Gwinnett Braves.

This free event will feature paper shredding, electronics recycling (\$10 cash charge to recycle TVs), and tire recycling (limit eight tires per vehicle, no dealer tires) kids' activities, and more!



Calling all volunteers!

Looking for some volunteer service hours? Volunteer with us during the America Recycles Day event. Volunteers will be assigned to serve from 8:00am to 1:00pm. Visit www.volunteergwinnett.net to sign up as a volunteer for this event.

Rabies alert

A rabies alert has been issued. The following animals have been found:

- A raccoon found September 24, 2012, on Arabian Way in Snellville tested positive for rabies.
- A raccoon found September 15, 2012, on Huntshire Lane in Lilburn tested positive for rabies.

If you or your child have been bitten or scratched by any stray animals, or if you know of anyone handling these animals, please call the Gwinnett County Animal Welfare and Enforcement Bite Office at 770.339.3200 ext. 5576.

What does a rabid animal look like?

Rabid animals may act tame. They may also display strange or unusual behavior. They may act aggressive, avoid food and water, foam at the mouth, or have trouble moving. Stay away from any unknown animals, especially wildlife. Report any animal that is acting unusual to Gwinnett County Police Animal Welfare and Enforcement at 770.513.5100.

How can I help protect myself and my family from rabies?

- Make sure your pets get their rabies shots regularly.
- Do not leave garbage or pet food outside.
- Do not pick up or move sick or hurt animals. If you find a wild, sick, or hurt animal, call Gwinnett County Police Animal Welfare and Enforcement at 770.513.5100.
- Do not keep wild animals like raccoons, skunks, foxes, and coyotes as pets. It is dangerous and also illegal.

gwinnettcounty
Communications Division
770.822.7180

www.gwinnettcounty.com

Join Our Mailing List!

[Forward email](#)



This email was sent to emily.fehn@gwinnettcountry.com by gccommunications@gwinnettcountry.com | [Update Profile/Email Address](#) | Instant removal with [SafeUnsubscribe™](#) | [Privacy Policy](#).

Gwinnett County Communications | 75 Langley Drive | Lawrenceville | GA | 30046