



April 25, 2018

**In this issue:**

Let's talk transit!

Peachtree Corners library closing for repairs

Master gardeners sponsor sale

Dispose of old prescription drugs April 28

Bring a pet home this April

Youth Commission offers leadership skills

Envision Gwinnett's future at Unified Plan Open House

Bicentennial Moment-Lawrenceville Female Seminary

**Dear Homeowner,**

As a resident of Gwinnett County, you know there is always a lot going on in the community.

Gwinnett County Government would appreciate your help keeping your neighbors informed by sharing the following information through your homeowner association newsletter, website, and emails and by talking to your friends and family.



**What's new on TVgwinnett?**



Gwinnett County brings you the latest news and happenings about your community through Eye on Gwinnett, our bi-weekly news program.

What you'll see in this episode:

- McDaniel Farm receives antique tractor
- Earth Day recycling event set for May 5
- Multicultural Festival draws large crowd
- Tax Assessor's Office mails notices
- Senior Golden Games close on May 9

**Tonight is the last open house to weigh in on Gwinnett's transit options**

The County and its consulting team have gone through the first round of public visioning for a countywide transit system, and have put together some preliminary options for the future.

**Tonight, April 25,** is the last of a series of public open houses for people to weigh in on those options.

The consultants will modify the recommendations based on public input, conduct ridership models, and finalize their recommendations for the Board of Commissioners in the summer. The County is seeking a balance of modes of transit, and frequency and coverage, taking into account the needs and wants of the community.



The plan will focus on short- to mid-range objectives (up to 10 years) which would expand transit within the county and tie in with transit with other jurisdictions. The long-term goal is to make it easier and more appealing for more people to use transit by increasing access and connectivity.

Tonight's open house runs from 6:00pm to 8:00pm at the Gwinnett Justice and Administration Center. The transit team will also be at Grayson Day on **April 28** from 10:00am to 4:00pm at Grayson Community Park, and at Summer Farmers Market at Suwanee Town Center on **May 12** from 8:00am to noon.

### Peachtree Corners library branch to close for repairs through April 27

Gwinnett County Public Library's Peachtree Corners Branch will be closed from **through April 27** for an HVAC system replacement.

Book drops will remain open, but fines for items due during the closed period will be waived. Customers are encouraged to select alternate pickup locations for holds expected to arrive at the Peachtree Corners branch during the repairs, and can call the Library Help Line with questions at 770.978.5154. The Peachtree Corners branch of Gwinnett County Public Library is located at 5570 Spalding Drive, Peachtree Corners.

### Gwinnett master gardeners offering quality plants at annual sale April 28



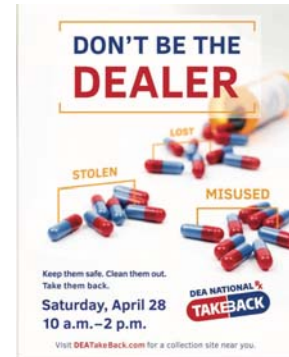
Buy your plants from the experts. The Gwinnett County master gardeners are selling trees, shrubs, perennials, annuals, vegetables, and herbs, including native and pollinator plants for sustainable gardens at their annual sale on **April 28** at Lilburn City Hall. Only checks and cash will be accepted at this rain or shine event. The Lilburn City Hall is located at 2817 Church Road Northwest, Lilburn.

### Dispose of expired, unwanted pharmaceuticals at Drug Take Back Day on April 28

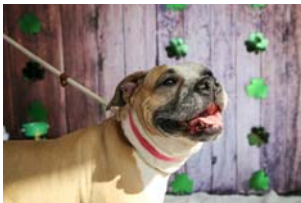
Gwinnett residents can get rid of unused, unneeded, or expired prescription medications for free by dropping them off at the Gwinnett County Sheriff's Office on **April 28** from 10:00am to 2:00pm.

The Sheriff's Office is participating in the Drug Enforcement Administration's 15<sup>th</sup> National Prescription Drug Take-Back Day. The drugs collected will be destroyed by DEA at EPA-approved incinerators.

Tablets, capsules, patches, and other solid forms will be accepted. Liquids, including intravenous solutions, syringes and sharps, and illegal drugs cannot be dropped off. Call 800.882.9539 for more information or visit [www.DEATakeBack.com](http://www.DEATakeBack.com).



### Gwinnett Animal Shelter offering adoption special of \$45 per dog in April



The Gwinnett Animal Welfare and Enforcement shelter is offering an adoption special of only \$45 for dogs for the month of April.

Most dogs and cats have been examined by staff veterinarians, vaccinated, and neutered or spayed, so they are ready to go home on the day of adoption.

Shelter fees are typically \$90 for a dog and \$30 for a cat. The shelter is open for adoptions Monday through Thursday from 11:00am to 6:00pm, and on Friday and Saturday from 11:00am to 4:00pm.

### County accepting applications for second Youth Commission class

Gwinnett County Government is recruiting high school students for the Gwinnett Youth Commission, a program to develop young leaders who can speak on behalf of youth in Gwinnett County and be engaged in the community.

The commission, launched last year, consists of an eight-week course on Gwinnett County Government, covering infrastructure, health and human services, public safety, courts, and recreation. Students will also receive leadership and personal development training.

To be eligible for the youth commission, students must be a resident of Gwinnett County, be a rising sophomore, junior, or senior at a Gwinnett high school, and submit a completed application and typed essay by **April 30**.

For more information, contact Nicole Hendrickson at [nicole.hendrickson@gwinnettcounty.com](mailto:nicole.hendrickson@gwinnettcounty.com) or 770.822.8877, or visit the Gwinnett Youth Commission [webpage](#).

### Help shape Gwinnett's future by attending a 2040 Unified Plan Open House

The Gwinnett County Department of Planning and Development is soliciting public input to assist in the development of the 2040 Unified Plan through several community open houses, starting **April 30** at the Dacula Park Activity Building. The community open house events will feature interactive exercises to encourage people to imagine Gwinnett County in 2040 and share their vision of what it could be.



The Unified Plan, called a comprehensive plan in other jurisdictions, combines many different plans into a coordinated, working blueprint to help shape future policies by many County agencies. Public feedback will help produce a short-term list of projects and programs as well as a broad, long-term vision to guide growth and development over the next 22 years.

You can also fill out a short online survey through **May 31**. To learn more about the plan, visit [www.Gwinnett2040UnifiedPlan.com](http://www.Gwinnett2040UnifiedPlan.com) and follow the Gwinnett 2040 Unified Plan on Facebook. Email questions to [gwinnett2040@gwinnettcounty.com](mailto:gwinnett2040@gwinnettcounty.com).

### 2040 Unified Plan Community Open House Schedule (all meetings 5:00pm to 7:00pm)

April 30 - Dacula Park Activity Building, 2735 Old Auburn Avenue, Dacula  
May 7 - Lenora Park, 4515 Lenora Church Road, Snellville  
May 10 - Rhodes Jordan Park, 100 East Crogan Street, Lawrenceville  
May 14 - George Pierce Park, 55 Buford Highway, Suwanee  
May 17 - Lucky Shoals Park, 4651 Britt Road, Norcross

### Gwinnett County Bicentennial Moment - Lawrenceville Female Seminary



The Lawrenceville Female Seminary was built by Daniel Killian in 1838 to educate young girls. Martha Wells was the first principal.

The original building was destroyed by a fire around late 1850. The present Green Revival structure was built between 1853 and 1855. It was used as a school through 1886.

The Free Masons used the one floor of the building for more than a century. After the school closed, it served as a civic center, but then fell into disrepair. It was almost sold and torn down to make room for a Dairy Queen franchise in 1971, but Annette Williams Tucker had the building added to the National Register of Historic Places and saved it. It now houses the Gwinnett History Museum, which displays a variety of artifacts from the county's early days.

The Lawrenceville Female Seminary is now open Monday through Saturday from 10:00am to 2:00pm. Visitors can see the Bicentennial School Exhibit and the updated history exhibit. They can also tour the historic Isaac Adair House on campus, enjoy the beautiful lawn, or join County staff members for historic walking tours of downtown Lawrenceville.

Bicentennial Bus tours also leave from this location and include stops at Gwinnett County's historic sites. The tour each month has a different theme. The Lawrenceville Female Seminary also offers engaging summer camps that include Archaeology and the Ancient World, Prehistoric Camp, Renaissance and more. Please register at [www.gwinnettparks.com](http://www.gwinnettparks.com).

For more historical information, visit the Gwinnett Historical Society page at [www.gwinnetths.org](http://www.gwinnetths.org). Visit [www.gwinnett200.com](http://www.gwinnett200.com) for more on the events celebrating the county's bicentennial.

[Join Our Mailing List!](#)