

NEWS

for Neighborhoods

A newsletter for Gwinnett County homeowners

November 8, 2023

Greetings!

As a resident of Gwinnett County, you know there is always a lot going on in the community. Read this newsletter to stay up-to-date on the latest news from your County government.

[Gwinnett County Government](#) appreciates your help keeping your neighbors informed by sharing the following information through your homeowner association newsletter, website, and emails and by talking to your friends and family.

What's new on TV Gwinnett?

Gwinnett County brings you the latest news and happenings about your community through Eye on Gwinnett, our weekly news program.



What you'll see in this episode:

- Gwinnett salutes veterans during annual Veterans Day Ceremony
- Celebrate National Adoption Day
- Ride Gwinnett Route 50 launches November 20
- The Great Tree arrives to the Gwinnett Historic Courthouse

Check out more videos on TV Gwinnett [Video on Demand](#).

Veterans to be honored at annual Veterans Day Ceremony

Join us to pay tribute to Gwinnett's veterans during the 2023 Veterans Day Ceremony. The ceremony will be held on **Saturday, November 11 at 11:00am** at the Gwinnett Fallen Heroes Memorial on the grounds of the Gwinnett Justice and Administration Center in Lawrenceville.

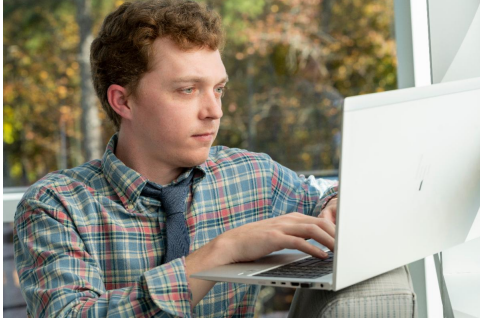
Gwinnett County officials will provide remarks, and veterans will be honored for their service. The ceremony will stream live on Facebook [@GwinnettGov](#) and be available on demand at [TVGwinnettLive.com](#) following the event.



Take a survey to help enhance our election processes

Gwinnett Voter Registrations and Elections values your feedback to help enhance our election processes and outreach initiatives. [Take a survey](#) in your language of choice to share how we can best serve and accommodate your needs. Your responses will be completely anonymous and will not be used for any other purpose than to promote strengthened voting processes for future elections.

¡Toma una encuesta para ayudar a mejorar



nuestros procesos electorales!

La Inscripción de Votantes y Elecciones de Gwinnett valora sus comentarios para ayudar a mejorar nuestros procesos electorales e iniciativas de divulgación. [Toma una encuesta](#) en el idioma de tu elección para compartir cómo podemos servirte y acomodar tus necesidades. Tus respuestas serán completamente anónimas y no se utilizarán para ningún otro propósito más que el de promover procesos de votación fortalecidos para futuras elecciones.

Learn about Ride Gwinnett Route 50

On November 20, there will be a new way to connect to your favorite places! Ride Gwinnett Route 50 will provide a connection from the Sugarloaf Mills Park and Ride through downtown Suwanee. It also includes connections to the Mall of Georgia, the Exchange at Gwinnett, and Coolray Field.

Get an early look at the new route by attending a [virtual meeting](#), and get ready to hop on just in time for holiday shopping!



There's still time to help us plan for Gwinnett's future



We have exciting fall events where you can share your ideas for improving our communities in Gwinnett! Join us at one of our Small Area Plan Charettes workshops where we will analyze specific areas and explore opportunities for improvement.

Or, if you prefer to learn about project recommendations and see how they could be implemented, come at one of our Community Fairs. To learn how you can get involved at these fun, interactive events, visit GwinnettCounty.com/2045UnifiedPlan.

County offices closed for Veterans Day

All Gwinnett County government offices, apart from operations required for the comfort and safety of residents, will be closed **Friday, November 10** for Veterans Day and will resume regular hours on Monday, November 13.

Trash will be collected as normal throughout the holiday. Learn more at GCSolidWaste.com. A Magistrate Court judge will be available at the Gwinnett County Detention Center during the holiday.



Get ready to light up the night!

The annual Lighting of the Tree kicks off the holiday season on **Thursday, November 23** at the Gwinnett Historic Courthouse in downtown Lawrenceville.

From **5:30pm to 8:00pm**, enjoy live entertainment, kids' activities, a visit from Santa, and more. Following the event, explore the courthouse with self-guided tours and experience the magic of Santa's headquarters. Don't miss this treasured family tradition!



Help Gwinnett Police fill the sleigh

Gwinnett Police are accepting toy donations for children ages 3 to 15 through **Friday, December 15**. Toys should be new, unwrapped, and priced at \$10 or more. Youth basketballs, footballs, and soccer balls are great gifts for teenagers. Toy weapons will not be accepted.

Donations can be dropped off at [Gwinnett Police Headquarters or any precinct lobby](#). For more information about the Fill the Sleigh Toy Drive, email PDCommunityAffairs@GwinnettCounty.com.



Get affordable internet access for your home



You may qualify for a \$30 monthly discount on your home or mobile internet service through the Federal Communications Commission Affordable Connectivity Program. Gwinnett County is encouraging eligible residents to claim this new benefit and start saving on internet service.

Visit AffordableConnectivity.gov or call 877.384.2575 to learn about eligibility and apply. Then, contact a participating broadband provider to start receiving your monthly discount.

Visit our website, social media for latest news

To stay updated with the latest news from the County, visit our website GwinnettCounty.com or follow us on [Facebook](#), [Twitter](#), and [Instagram](#) @GwinnettGov.



Communications Department
770.822.7180 | GwinnettCounty.com

Follow us on

