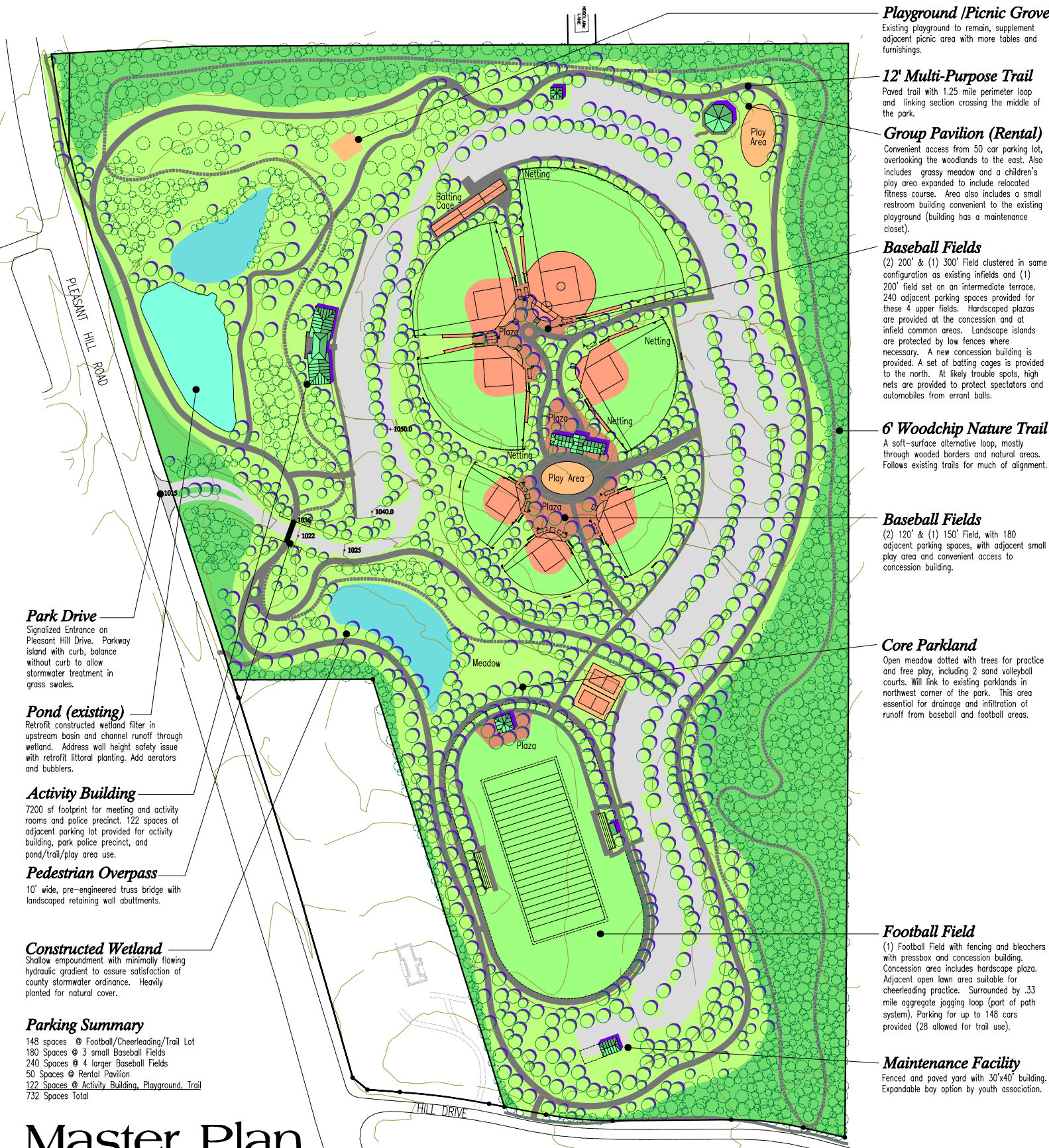


Shorty Howell Park



Playground /Picnic Grove
Existing playground to remain, supplement adjacent picnic area with more tables and furnishings.

12' Multi-Purpose Trail
Paved trail with 1.25 mile perimeter loop and linking section crossing the middle of the park.

Group Pavilion (Rental)
Convenient access from 50 car parking lot, overlooking the woodlands to the east. Also includes grassy meadow and a children's play area expanded to include relocated fitness course. Area also includes a small restroom building convenient to the existing playground (building has a maintenance closet).

Baseball Fields
(2) 200' & (1) 300' Field clustered in same configuration as existing infields and (1) 200' field set on an intermediate terrace. 240 adjacent parking spaces provided for these 4 upper fields. Hardscaped plazas are provided at the concession and at infield common areas. Landscape islands are protected by low fences where necessary. A new concession building is provided. A set of batting cages is provided to the north. At likely trouble spots, high nets are provided to protect spectators and automobiles from errant balls.

6' Woodchip Nature Trail
A soft-surface alternative loop, mostly through wooded borders and natural areas. Follows existing trails for much of alignment.

Baseball Fields
(2) 120' & (1) 150' Field, with 180 adjacent parking spaces, with adjacent small play area and convenient access to concession building.

Core Parkland
Open meadow dotted with trees for practice and free play, including 2 sand volleyball courts. Will link to existing parklands in northwest corner of the park. This area essential for drainage and infiltration of runoff from baseball and football areas.

Football Field
(1) Football Field with fencing and bleachers with pressbox and concession building. Concession area includes hardscape plaza. Adjacent open lawn area suitable for cheerleading practice. Surrounded by .33 mile aggregate jogging loop (part of path system). Parking for up to 148 cars provided (28 allowed for trail use).

Maintenance Facility
Fenced and paved yard with 30'x40' building. Expandable bay option by youth association.

Park Drive
Signalized Entrance on Pleasant Hill Drive. Parkway island with curb, balance without curb to allow stormwater treatment in grass swales.

Pond (existing)
Retrofit constructed wetland filter in upstream basin and channel runoff through wetland. Address wall height safety issue with retrofit littoral planting. Add aerators and bubblers.

Activity Building
7200 sf footprint for meeting and activity rooms and police precinct. 122 spaces of adjacent parking lot provided for activity building, park police precinct, and pond/trail/play area use.

Pedestrian Overpass
10' wide, pre-engineered truss bridge with landscaped retaining wall abutments.

Constructed Wetland
Shallow empondment with minimally flowing hydraulic gradient to assure satisfaction of county stormwater ordinance. Heavily planted for natural cover.

Parking Summary
148 spaces @ Football/Cheerleading/Trail Lot
180 Spaces @ 3 small Baseball Fields
240 Spaces @ 4 larger Baseball Fields
50 Spaces @ Rental Pavilion
122 Spaces @ Activity Building, Playground, Trail
732 Spaces Total

Master Plan

June 22, 2001

Prepared for
Gwinnett County, Department of Community Services

Prepared by
CERULEA Inc.

