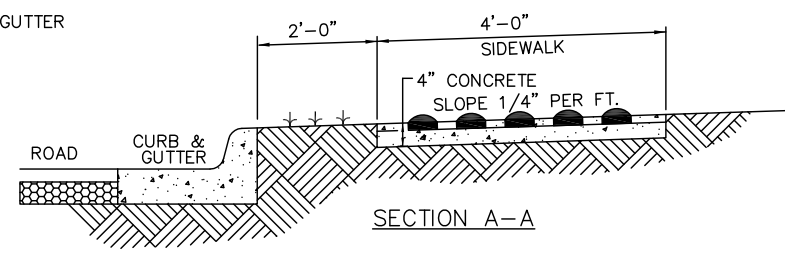
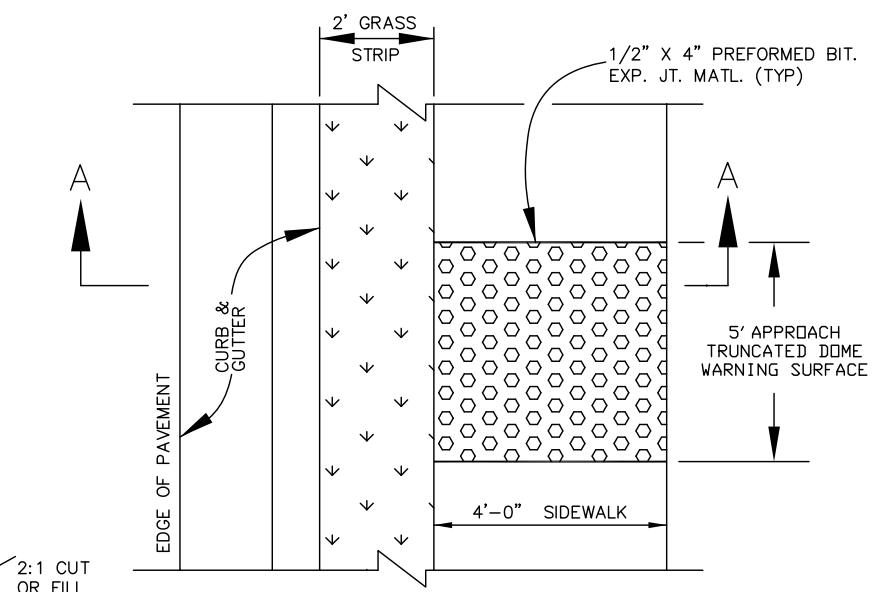
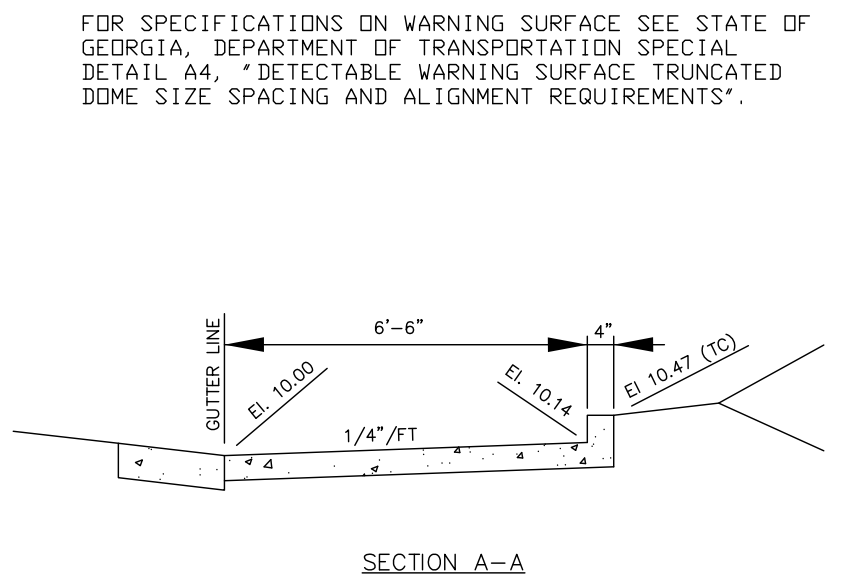


SIDEWALK RAMP AT STREET INTERSECTION

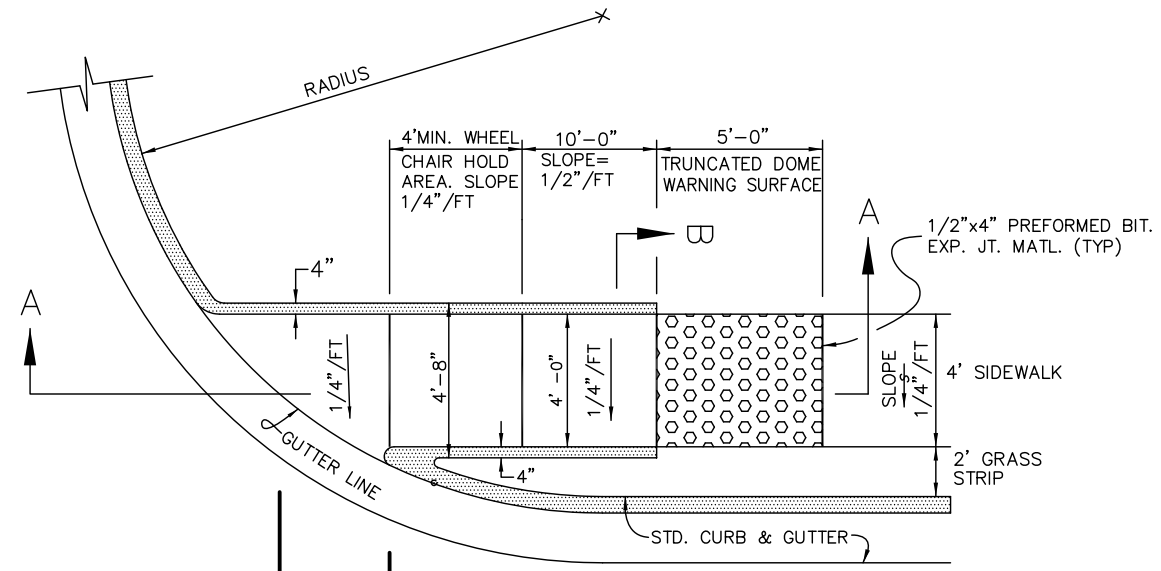


TRUNCATED DOME WARNING SURFACE

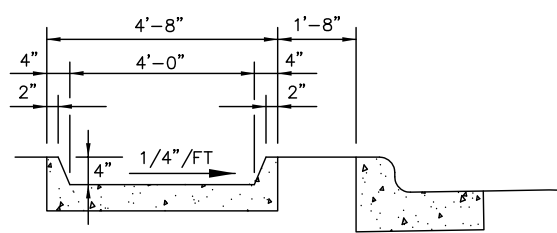


SECTION A-A

BY	REVISION	DATE
EDP	GENERAL REV.	03/18/02
PPI	WARNING SURFACE	11/2015



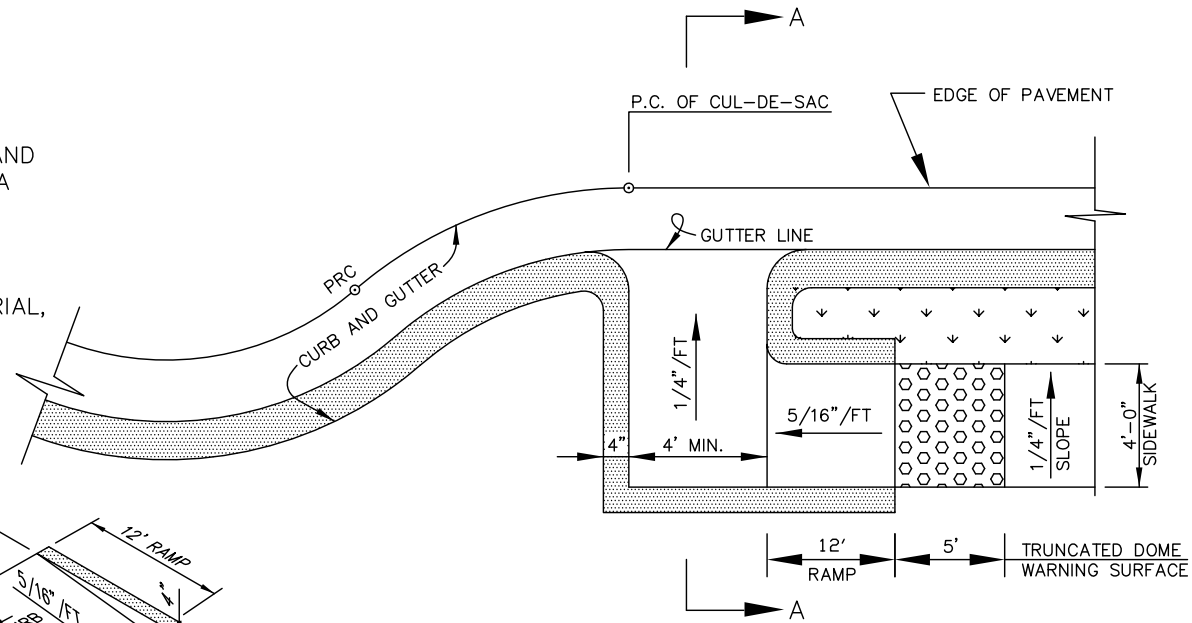
SECTION A-A
STRAIGHT SIDEWALK RAMP
4'-0" WIDTH SIDEWALK
WITH 1'-8" GRASS STRIP



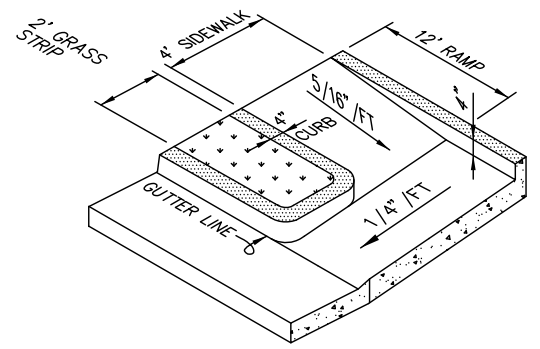
SECTION B-B

GENERAL NOTES

1. SIDEWALK INSTALLATION SHALL MEET THE REQUIREMENTS OF THE "UNIFORM FEDERAL ACCESSIBILITY STANDARDS"(UFAS), AND THE "AMERICAN DISABILITY ACT OF 1991", AND THE "GEORGIA ACCESSIBILITY CODE" LATEST EDITION.
2. ALL SIDEWALK AND WHEEL CHAIR RAMP LANDINGS SHALL BE A MINIMUM OF 4'-0" IN WIDTH.
3. CONSTRUCTION JOINTS, WITH 1/2" PREMOULDED JOINT MATERIAL, ARE REQUIRED AT ALL BREAKS IN GRADE ON ALL RAMPS.



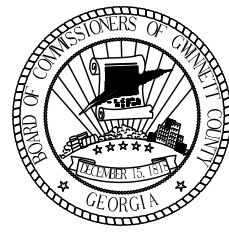
"L SHAPED" MID-BLOCK SIDEWALK RAMP



ISOMETRIC VIEW

NOTE: CONSTRUCTION JOINT WITH 1/2" PREMOULDED JOINT MATERIAL REQUIRED AT ALL BREAKS IN GRADE ON RAMP.

FOR SPECIFICATIONS ON WARNING SURFACE SEE STATE OF GEORGIA, DEPARTMENT OF TRANSPORTATION SPECIAL DETAIL A4, "DETECTABLE WARNING SURFACE TRUNCATED DOME SIZE SPACING AND ALIGNMENT REQUIREMENTS".



GWINNETT COUNTY
DEPARTMENT OF PLANNING & DEVELOPMENT
STANDARD DRAWING

Handicap Ramp Details with 4' Sidewalk