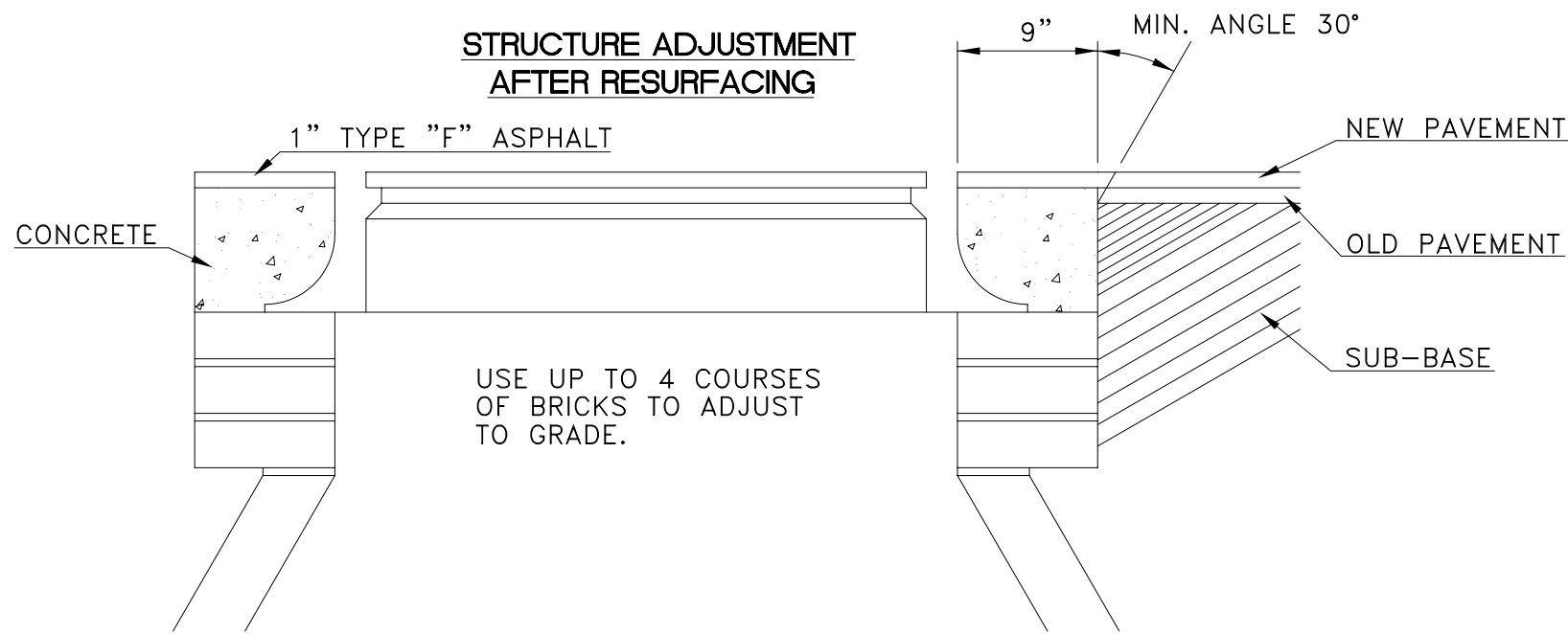
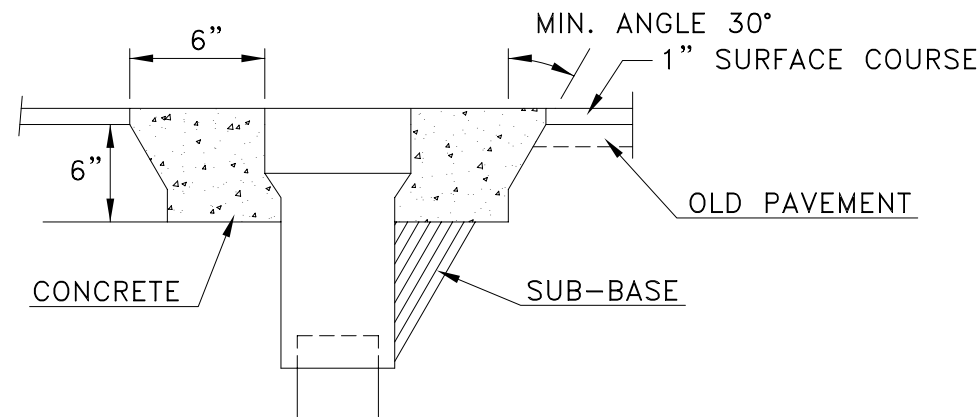


**STRUCTURE ADJUSTMENT  
AFTER RESURFACING**



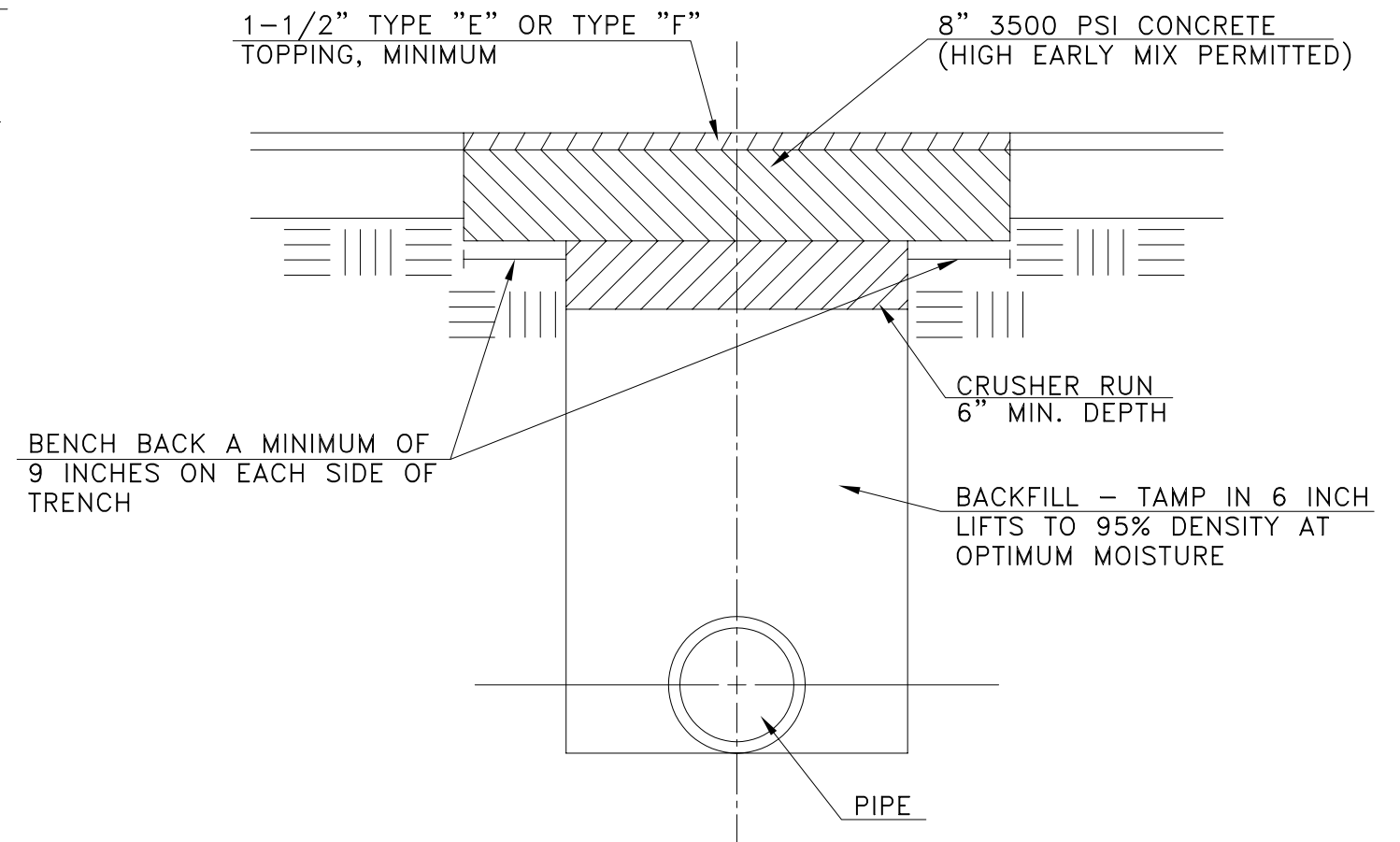
NOTE: IF GREATER THAN (3) BRICK USE 1' RISER SECTION

**MANHOLE**



**VALVE**

**BACKFILLING UTILITY CUTS  
AND REPLACING PAVEMENT**



**NOTES:**

1. ALL LATERAL STREET CUTS MUST BE COVERED WITH STEEL PLATES OF SUFFICIENT THICKNESS TO SPAN THE CUT WITHOUT NOTICEABLE DEFLECTION. PLATES TO REMAIN IN PLACE UNTIL THE CONCRETE BASE HAS GAINED SUFFICIENT STRENGTH TO WITHSTAND TRAFFIC LOADS (24 HOUR MINIMUM).
2. ON LONGITUDINAL CUTS EXCEEDING 150 FEET IN LENGTH, THE CONCRETE IN THE TRENCH WILL BE BROUGHT FLUSH WITH THE EXISTING PAVEMENT AND THE ENTIRE WIDTH OF THE ROADWAY RESURFACED WITH A MINIMUM OF 1-1/2" OF TYPE "E" OR "F" ASPHALT TOPPING COURSE.

**NOTES:**

1. STRUCTURES WILL NOT BE ADJUSTED FOR A PERIOD OF AT LEAST 24 HOURS AFTER RESURFACING IS COMPLETED IN THAT AREA.
2. ASPHALT WILL BE CUT SO AS TO MAKE A SMOOTH, EVEN EDGE.
3. STRUCTURE COVER WILL BE ADJUSTED TO FIT FLUSH WITH STREET SURFACE.
4. ALL CONCRETE SHALL HAVE A MINIMUM COMPRESSIVE STRENGTH OF 3000 PSI. UNLESS NOTED OTHERWISE.
5. CONCRETE WILL BE USED TO BACKFILL THE ENTIRE WORKING AREA.
6. FINISHING CONCRETE SHALL BE PERFORMED BY USE OF A TROWEL OR FLOAT.
7. SANITARY SEWER MANHOLES MUST BE VENTED IMMEDIATELY AFTER BEING PAVED OVER, THEREFORE WHEN MORE THAN ONE LIFT OF ASPHALT IS TO BE PLACED THE CONTRACTOR MAY ADJUST STRUCTURE PRIOR TO PAVING.

