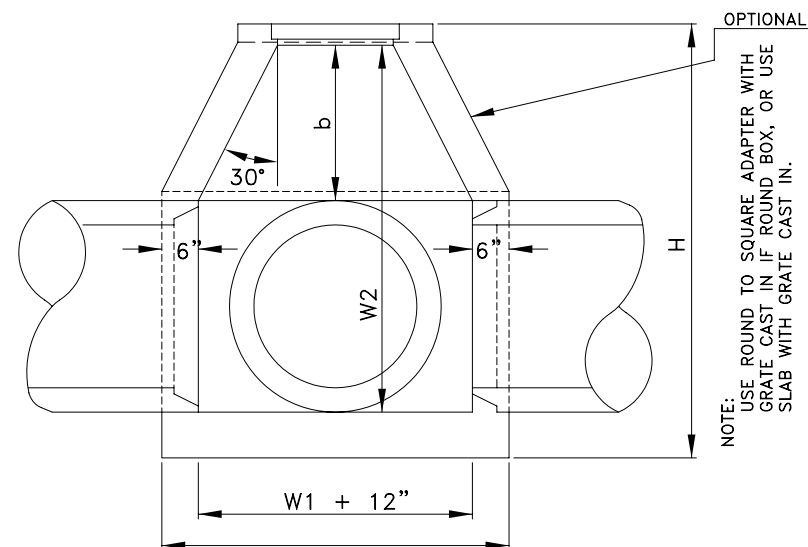
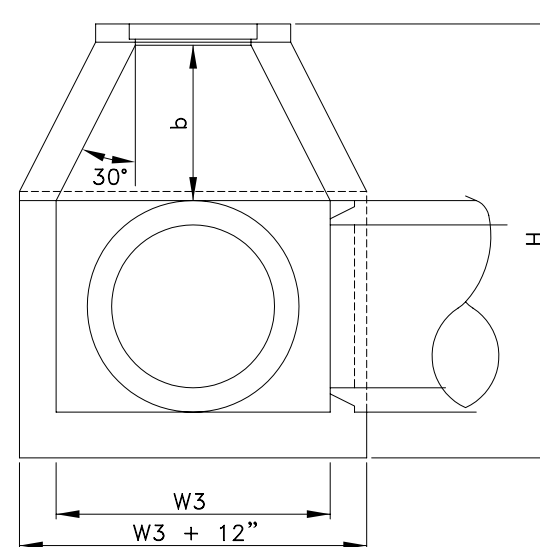


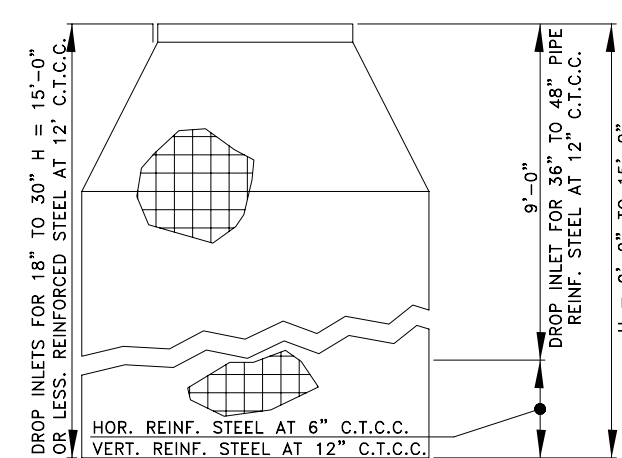
CAN BE BRICK OR PRECAST BOX.



SECTION A-A



SECTION B-B

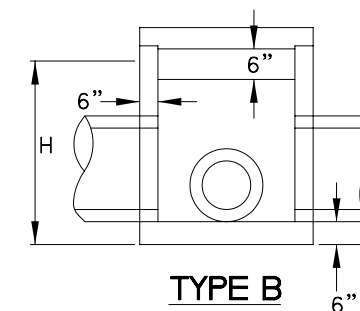


IN ALL DROP INLETS 1/2" Ø BAR REINFORCING STEEL TO BE PLACED NOT MORE THAN 12" C TO C AND COVERED NOT LESS THAN 2".

TYPE A

NOTES:

- BRICK INVERTS REQUIRED AT ALL JUNCTION BOXES & DROP INLETS RAISE BOTTOM OF BOX TO OUTFLOW PIPE INVERT. MATCH DIFFERENT SIZE PIPES AT CROWNS.
- MAXIMUM VERTICAL DEPTH FOR DROP INLET H = 15'-0"



TYPE B

1/2" Ø BARS AT 12" CENTER TO CENTER

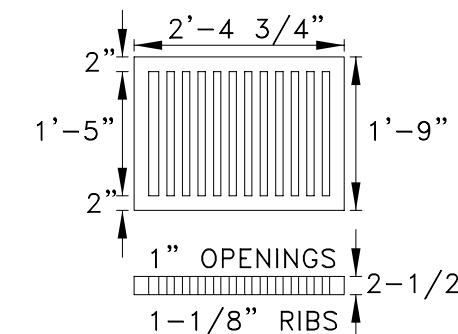
TYPE A							TYPE B		
D	W1	MIN.-W2	W3	a	b	MIN.-H	NORMAL W OR W1	MIN. b	MIN. H
15"	2'-0"	2'-6 1/2"	2'-7"	0'-3 1/2"	0'-6"	3'-3"	2'-0"	2'-7 1/2"	3'-9 1/2"
18"	2'-0"	2'-9 1/2"	2'-7"	0'-3 1/2"	0'-6"	3'-6"	2'-3"	2'-10"	4'-0"
24"	2'-6"	4'-1/2"	3'-3"	0'-7 1/2"	1'-1"	4'-9"	3'-0"	3'-6"	4'-10"
30"	3'-4"	5'-1 1/2"	3'-11"	0'-11 1/2"	1'-6"	5'-10"	3'-6 1/2"	4'-2 1/2"	5'-4 1/2"
36"	3'-10"	6'-1 1/2"	4'-5"	1'-2 1/2"	2'-1 1/4"	6'-10"	4'-2"	4'-10"	6'-0"
42"	4'-5"	7'-2 1/2"	5'-0"	1'-6"	2'-7 1/2"	7'-11"	4'-8 1/2"	5'-4 1/2"	6'-6 1/2"
48"	5'-0"	6'-3 1/2"	5'-7"	1'-9 1/2"	3'- 1 1/4"	9'-0"	5'-3 1/2"	5'-11 1/2"	7'-1 1/2"
54"	5'-7"	9'-4 1/2"	6'-2"	2'-1"	3'-7 1/4"	10'-1"	5'-10"	6'-6"	7'-6"
60"	6'-2"	10'-6 1/2"	6'-9"	2'-4 1/2"	4'-1 1/2"	11'-2"	6'-4 1/2"	7'-0 1/2"	8'-2 1/2"
66"	6'-9"	11'-6 1/2"	7'-4"	2'-6"	4'-7 1/2"	12'-3"	6'-11"	7'-7"	8'-9"
72"	7'-4"	12'-7 1/2"	7'-11"	2'-11 1/2"	5'-1 1/4"	13'-4"	7'-6 1/2"	8'-1 1/2"	9'-3"

CONCRETE D.I.

TYPE A							TYPE B		
D	W1	MIN.-W2	W3	a	b	MIN.-H	NORMAL W OR W1	MIN. b	MIN. H
15"	2'-2"	2'-11"	2'-9"	0'-4 1/2"	0'-6"	3'-9 1/2"	2'-0"	2'-7 1/2"	3'-7 1/2"
18"	2'-2"	3'-2 1/2"	2'-9"	0'-4 1/2"	0'-6"	4'-1"	2'-0"	2'-10"	3'-10"
24"	2'-8"	3'-8"	3'-3"	0'-7 1/2"	1'-1 1/4"	4'-9"	3'-0"	3'-6"	4'-6"
30"	3'-7 1/4"	4'-0"	3'-10"	1'-0"	1'-9"	5'-10"	3'-6 1/2"	4'-2 1/2"	5'-10"
36"	4'-2"	6'-0 1/2"	4'-5"	1'-4 1/2"	2'-1 1/4"	6'-11"	4'-2"	4'-10"	5'-10"
42"	4'-5"	7'-1 3/4"	5'-0"	1'-6"	2'-7 1/4"	8'-0 1/4"	4'-8 1/2"	5'-4 1/2"	6'-11 1/2"
48"	5'-0"	8'-2 3/4"	5'-7"	1'-9 1/2"	3'- 1 1/4"	9'-1 1/4"	5'-3 1/2"	5'-11 1/2"	6'-11 1/2"
54"	5'-7"	9'-4"	6'-2"	2'-1"	3'-7 1/2"	10'-2 1/2"	5'-10"	6'-6"	7'-6"
60"	6'-2"	10'-5"	6'-9"	2'-4 1/2"	4'-1 1/2"	11'-3 1/4"	6'-4 1/2"	7'-0 1/2"	8'-0 1/2"
66"	6'-9"	11'-6"	7'-4"	2'-6"	4'-7 1/2"	12'-4 1/2"	6'-11"	7'-7"	8'-7"
72"	7'-4"	12'-7"	7'-11"	2'-11 1/2"	5'-2"	13'-6 1/2"	7'-6 1/2"	8'-1 1/2"	9'-1 1/2"

BRICK D.I.

APPROX. WT. 200 LB.
DETAIL OF CAST IRON GRATING



GWINNETT COUNTY
DEPARTMENT OF PLANNING & DEVELOPMENT
STANDARD DRAWING

Standard Drop Inlet

DATE: JANUARY 1988

SHEET: 609