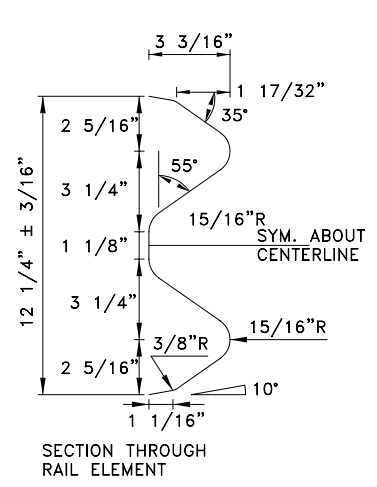
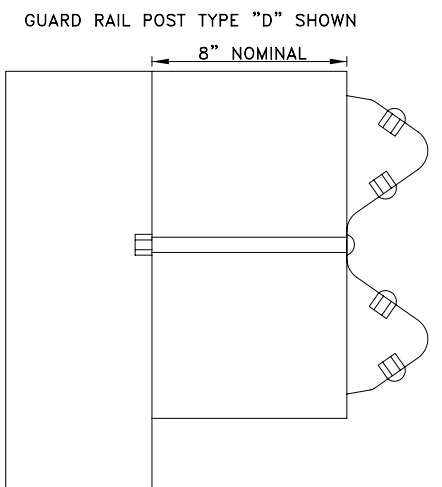


SAME AS SECTION THRU RAIL ELEMENT, EXCEPT WIDTH
STANDARD TERMINAL SECTION

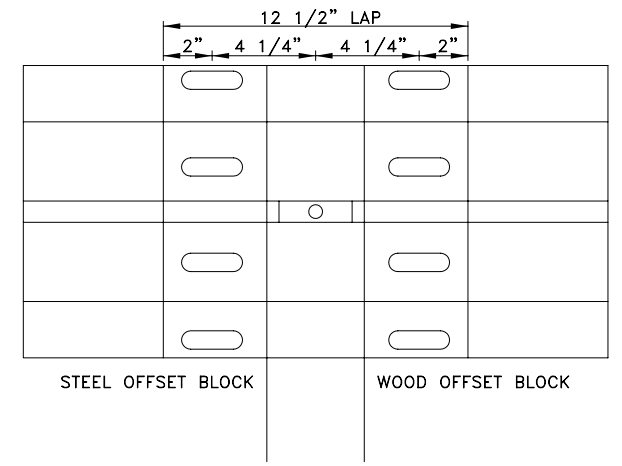


SECTION THROUGH RAIL ELEMENT



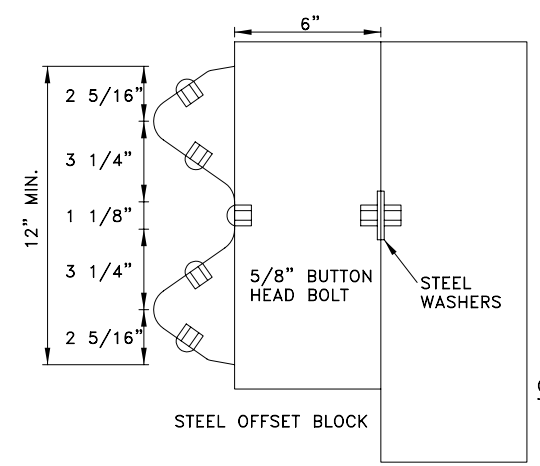
NOTE: OFFSET BLOCKS MAY BE WOOD OR STEEL

GUARD RAIL SPLICE AT POST

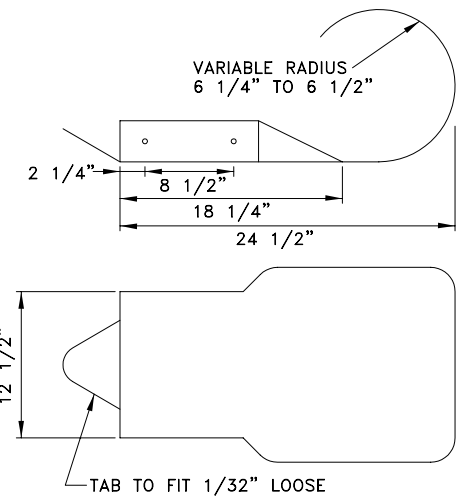


STEEL OFFSET BLOCK WOOD OFFSET BLOCK

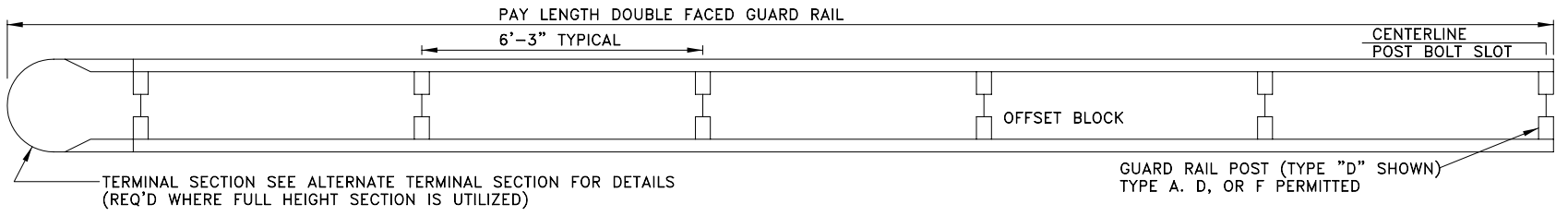
TYPE 2 OR 4 GUARD RAIL ANCHORAGE IF REQUIRED



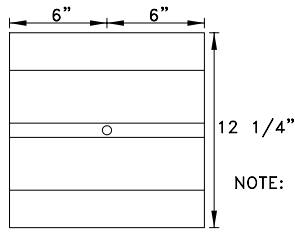
GUARD RAIL POST TYPE "D" SHOWN



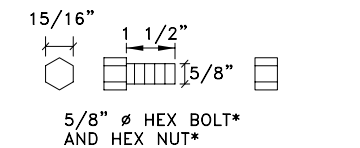
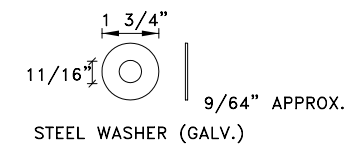
* ALTERNATE TERMINAL SECTION
* TERMINAL SECTION FOR DOUBLE FACED GUARD RAIL SIMILAR RADIUS VARIABLE 18" TO 24" AND LENGTH VARIABLE



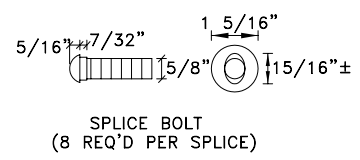
DOUBLE FACED GUARD RAIL



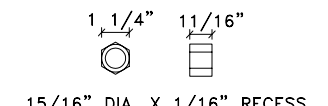
BACK-UP PLATE (REQ'D WITH STEEL OFFSET BLOCKS WHERE RAIL SPLICE DOES NOT OCCUR. LOCATED BACK OF RAIL)



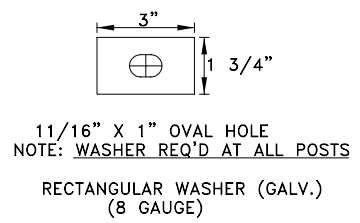
* TO BE USED ONLY FOR ATTACHING STEEL OFFSET BLOCKS TO STEEL POSTS



SPLICE BOLT (8 REQ'D PER SPLICE)



RECESS NUTS



11/16" X 1" OVAL HOLE NOTE: WASHER REQ'D AT ALL POSTS
RECTANGULAR WASHER (GALV.) (8 GAUGE)

GENERAL NOTES

1. GUARD RAIL, ITS FITTINGS, PARTS, ETC. ARE TO BE IN ACCORDANCE WITH STATE HIGHWAY DEPARTMENT OF GEORGIA STANDARD SPECIFICATIONS AND/OR SPECIAL PROVISIONS.
2. FOR DETAILS OF POSTS AND OFFSET BLOCKS SEE GA. DOT STANDARD DWGS.
3. FOR DETAILS OF GUARD RAIL ANCHORAGES SEE GA. DOT STANDARD DWGS.
4. FOR LOCATION OF GUARD RAIL SEE GA. DOT STANDARD DWGS.
5. ON PROJECTS WHERE GUARD RAIL CONNECTIONS AT BRIDGE ENDS HAVE BEEN PLACED ON PREVIOUS CONTRACTS THE END PANEL MAY BE SHORTENED BY CUTTING OR SHEARING TO FIT EXISTING STRUCTURE.
6. WHEN GUARD RAIL IS REQUIRED ON CURVES WITH RADII LESS THAN 150' PRECURVED RAIL WILL BE REQUIRED.
7. UNIT PRICE FOR GUARD RAIL TO INCLUDE OFFSET BLOCKS, POST, BACK-UP PLATES WHERE REQ'D, BOLTS, WASHERS, TERMINAL SECTIONS, ADDITIONAL POSTS WHERE REQUIRED, AND REMOVAL AND REPLACEMENT OF PORTIONS OF MEDIAN PAVING, SPILLWAYS OR CATCH BASINS WHERE NECESSARY.
8. ALL DIMENSIONS ARE SUBJECT TO MANUFACTURING TOLERANCES.
9. STANDARD NET LENGTH OF RAIL ELEMENTS MAY BE EITHER 12'-6" OR 25'-0" THESE LENGTHS SHALL BE ARRANGED TO PROVIDE AS NEARLY AS POSSIBLE THE OVERALL LENGTH ORDERED BY THE ENGINEER FOR ANY ONE LOCATION.



GWINNETT COUNTY
DEPARTMENT OF PLANNING & DEVELOPMENT
STANDARD DRAWING

Beam Type Guardrail

DATE: JANUARY 1988

SHEET: 901