

**Department of Planning and Development**

446 West Crogan Street • Lawrenceville, GA 30046-2440  
 (tel) 678.518.6000  
 www.gwinnettcountry.com



**Volume Verification Form**

Project Name \_\_\_\_\_ Date \_\_\_\_\_

Gwinnett Co. Permit # \_\_\_\_\_

BMP Identifier (as stated on original as-built): \_\_\_\_\_

BMP Facility Type: \_\_\_\_\_

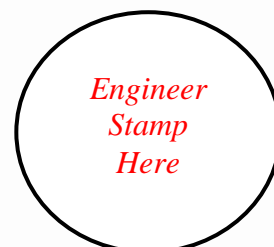
In accordance with the Gwinnett County UDO Ch. 500- 10.4, A volume verification was conducted on *(date)* by *(company)*. We hereby certify that no changes have occurred to the Best Management Practices (BMP) facility, which would affect either the volume or the outlet control structure since the As-built Storm Water Management Report was approved by Gwinnett County. We therefore conclude that the BMP facility's volume meets or exceeds the minimum required volume in accordance with Gwinnett County's development regulations.

**BMP's Minimum Required Volume \_\_\_\_\_ (cu. Ft.)**

| Volume Type  | Approved As-built Field Surveyed Volume (cu. ft.) | Existing Volume (cu. ft.) |
|--|---|---------------------------|
| Total Water Quality Volume (Volume Below Channel Protection Orifice) |   |                           |
| Total Facility Volume (Below Emergency Overflow)                     |   |                           |

Attached to this form is a new record survey, including topography, of the BMP facility along with a detail drawing of the outlet control structure for review. Also, include the stage/storage and pre/post development flow report if needed.

Note: One Form per BMP Facility



gwinnettcountry