

Peachtree Corners Town Hall

Gwinnett County Police Department
J.D. McClure, Chief of Police





Our Mission Statement

The Gwinnett County Police Department is committed to serving the community through the delivery of professional law enforcement services in an unbiased and compassionate manner in order to protect the lives and property of the citizens and improve the quality of life in our community.

Core Values

Integrity

We are committed to achieving the public's trust by holding ourselves accountable to the highest standards of professionalism and ethics.

Courtesy

We will conduct ourselves in a manner that promotes mutual respect with the community and our peers.

Pride

We are committed to conducting ourselves in a manner that brings honor to ourselves, our department and the community we serve.

Professional Growth

We are committed to developing future leaders through training and education.



Modern Police Work is a Convergence of:

Procedural Justice is related to discussions of the administration of justice and legal proceedings and is connected to due process.

Police Legitimacy is the degree to which the public views the police as an authority figure and is often measured by how willing people are to cooperate with the police.

- Police legitimacy is based on three judgments:
 - Trust: The public's trust and confidence in the police.
 - Compliance: The willingness of people to defer to the law and police authority.
 - Morality: The belief that police actions are morally justified and appropriate.

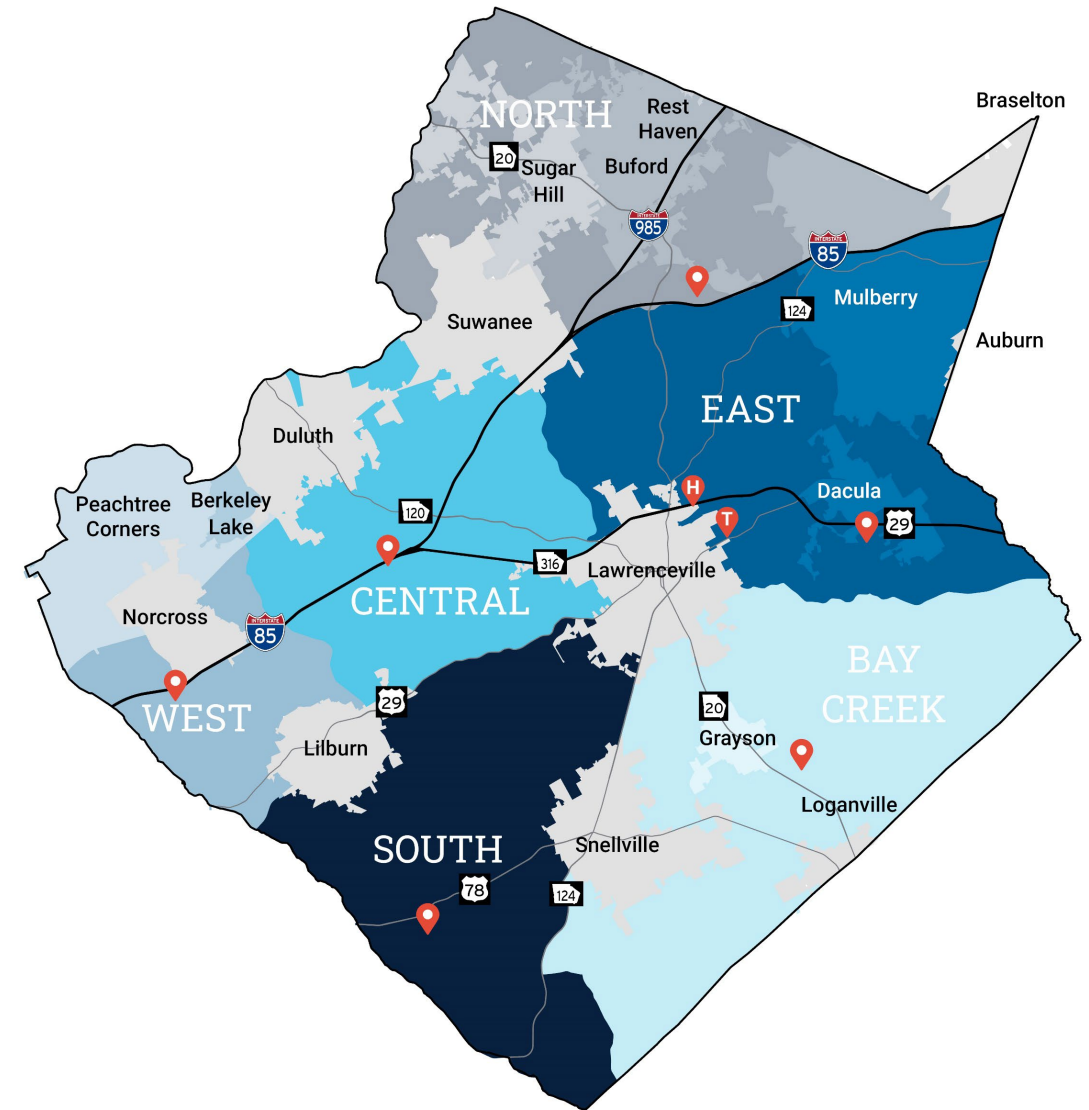
Serving Gwinnett County

Full-service law enforcement to approximately **853,307** citizens residing in:

- Unincorporated Gwinnett County
- Eight “non-police” cities
- Funding source – Police Service District

Services for approximately **1,020,157** citizens residing in Gwinnett County, including all cities:

- E-911
- Emergency Management
- SWAT
- Hazardous Devices Unit



Department Overview

Authorized 1,286 employees

931 authorized sworn officers

- 749 filled

355 authorized professional employees

- 314 filled

**Second largest full-service police
department in Georgia**





Department Overview: Calls for Service

*CAD calls created

Calls in 2023: **597,945**

Calls in 2024: **627,735**

Current Average Hold Time: **3 Seconds**

Department Overview: Office of the Chief

Chief of Staff

- Legal Issues/Legislative Liaison

Public Information Office

- Media Relations

Administrative Staff

- Administrative Support

Police Legal Advisor

- Legal Research
- Policy Review
- Investigative Advice



Department Overview: Operations Bureau

Uniform Division

- Tele-Serve Operations
- School Zone Speed Enforcement
- Uniform Patrol (6 Precincts)
 - West
 - South
 - North
 - East
 - Central
 - Bay Creek

Special Operations Division

- Accident Investigation Unit
- Aviation Unit
- DUI Task Force/Motors Unit
- SWAT/Hazardous Devices Unit (EOD)
- Behavioral Health Unit



Department Overview: Operations Bureau Cont.

Criminal Investigations Section

- Burglary Unit
- Electronic & Financial Crimes
- General Crimes Unit
- Homicide/Assault Unit
- Motor Vehicle Theft
- Robbery Unit
- Special Victims Unit
- Computer Forensics Lab
- Cold Case Unit





Department Overview: Criminal Investigations Division

Special Investigations Section

- Alcohol & Vice
- Crime and Intelligence Analysis
- SACRC/Flock Cameras
- Gang Unit (hybrid)
- Narcotics Unit
- Parcel Interdiction Team
- Technical Surveillance/Intelligence
- Gun Crimes Unit

Crime Scene Investigations

- Property & Evidence

Department Overview: Administrative Bureau

Support Operations Division

Accreditation

Fiscal Management

- Grants/Special Projects
- Alarm Reduction

Human Resources

Office of Professional Standards

- Background Investigations & Recruiting
- Internal Affairs

Records Management

- GCIC, Records, and Permits

Support Section

- Facilities Section
- Fleet Operations
- Lobby Officer/Building Security





Department Overview: Administrative Bureau

Training Division

Community Affairs

- Crime Prevention
- Community Outreach

Planning & Research

- Inspections
- Technology Support

Training

- Basic Training
- Drivers Training
- Firearms Training
- In-service/Civilian Training
- Academy Administration/CALEA Accreditation

Department Overview: Administrative Bureau



Communications Division



Office of Emergency Management

Police Accountability

- Review Process for Lesson Plans and Legal Updates
- Supervisor Audit/Review of all Use of Force incidents
- Early Intervention Review Board
- Citizen Complaint process
- Judicial Review process
- Use of Force resulting in life-threatening injury or death are directed to the GBI
- Gwinnett County Citizens Advisory Board
- Body Worn Camera/Fleet III Camera Systems
- State of Georgia Certified Agency since 1999

Commission on Accreditation for Law Enforcement Agencies (CALEA)

The Commission on Accreditation for Law Enforcement Agencies, Inc. (CALEA®), was created in 1979 as a credentialing authority through the joint efforts of law enforcement's major executive associations:

- International Association of Chiefs of Police (IACP)
- National Organization of Black Law Enforcement Executives (NOBLE)
- National Sheriffs' Association (NSA)
- Police Executive Research Forum (PERF)

Only **793** agencies out of approximately **18,000** Law Enforcement agencies in the United States are accredited.

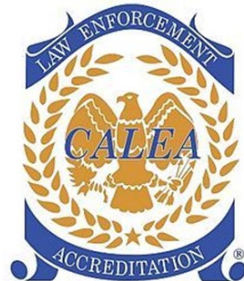


CALEA Accreditation

The Gwinnett Police Department received Law Enforcement accreditation in 1993 and has maintained that accreditation ever since.

In 2021, the Gwinnett Police Department also received CALEA Public Safety Training Academy and Public Safety Communications accreditations.

We are the first Tri-Arc accredited agency in Georgia. Of note, there are only **40** agencies internationally that have received Tri-Arc accreditation through CALEA. We are proud to be one of only **25** agencies in the United States to earn this distinction.



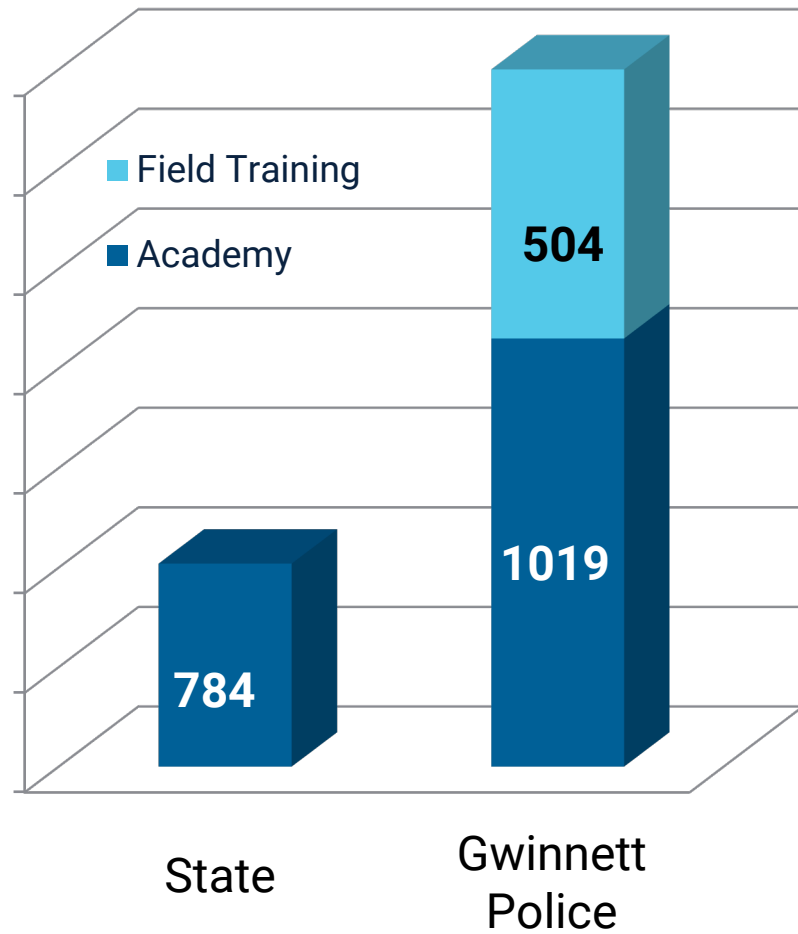
Training Campus

**\$48.7 million facility
(2007/2023/2025)**

- 35-acres
- Ten classrooms
- Multi-purpose training rooms
- Fitness center
- Running track
- Emergency Vehicle Operations track
- 25-yard and 100-yard indoor ranges
- Live-fire shoot house
- SWAT/HDU/K9 Building
- Staff offices



Recruit Training Hours





Training is an Investment!

Results matter!

- Better trained officers/better service
- Reduces use of force
- Reduces the number of complaints
- Improves community relations
- Maintains the trust of the community
- Reduces liability

West Precinct Organizational Chart

16 Zones (6 Zones in Peachtree Corners, 1 of those zones also contains Berkeley Lake)
Organization - 86 Sworn Police Officers

1 Major

4 Lieutenants

9 Sergeants

9 Corporals

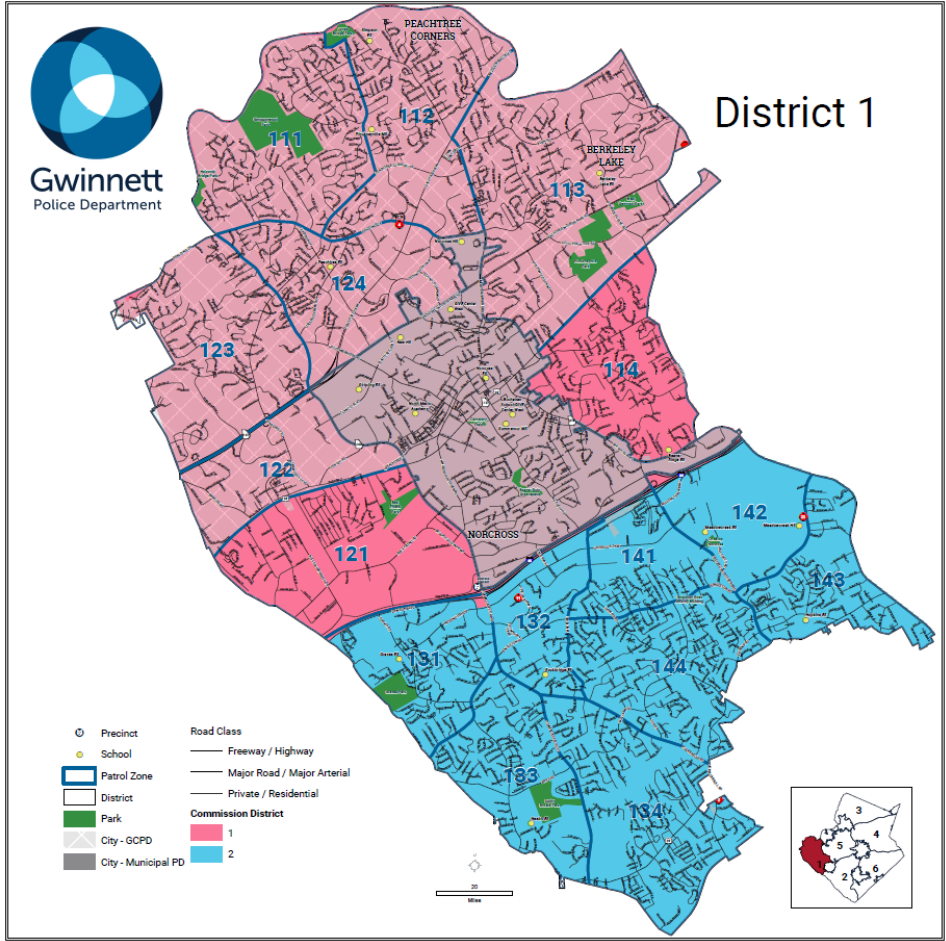
15 Master Police Officers

37 Police Officers (includes Police Officer Seniors)

11 Officers in Field Training

- Community Response Team (CRT): 1 Sergeant, 1 Corporal, 4 Officers (included above)
- 1 Administrative Sergeant (included above)
- 1 Community Relations Officer (included above)

West Precinct





What really matters?

- Crime statistics
- Police department support from County government
- Response times
- Staffing
- Service Delivery Strategy
(loss of police department resources)
- Surge capacity
- Access to CAD/RMS/Cameras



Department Results (2023 vs. 2024)

- Violent Crime - 16%
- Property Crime - 21%
- Overdose Deaths - 28%
- Traffic Fatalities - 18%
- Citations + 25%
- DUI Arrests + 16%
- Flock-assisted arrests + 40%

Gwinnett County

Group A: Offenses Against a Person	2024	2023	% of Change
ASSAULT (AGG. ASSAULT & AGG. BATTERY)	832	859	-3.14
HOMICIDE	32	40	-20.00
RAPE	111	101	9.90
ROBBERY	362	412	-12.14
Group A: Offenses Against Property			
ARSON	28	23	21.74
BURGLARY - COMMERCIAL	613	792	-22.60
BURGLARY - RESIDENTIAL	513	611	-16.04
LARCENY/THEFT	4950	4854	1.98
MOTOR VEHICLE THEFT	1077	1260	-14.52
THEFT FROM A MOTOR VEHICLE	3025	3697	-18.18

City of Peachtree Corners

Group A Offenses Against a Person	2024	2023	% of Change
ASSAULT (AGG. ASSAULT & AGG. BATTERY)	59	62	-4.84
HOMICIDE	1	3	-66.67
RAPE	8	7	14.29
ROBBERY	21	29	-27.59
Group A Offenses Against Property			
ARSON	2	2	0.00
BURGLARY - COMMERCIAL	102	64	59.38
BURGLARY - RESIDENTIAL	36	51	-29.41
LARCENY/THEFT	383	369	3.79
MOTOR VEHICLE THEFT	107	130	-17.69
THEFT FROM A MOTOR VEHICLE	227	235	-3.40

City of Peachtree Corners - 2025 YTD

Group A Offenses Against a Person	2025 YTD	2024 YTD	% of Change
ASSAULT (AGG. ASSAULT & AGG. BATTERY)	24	41	-41.46
HOMICIDE	1	1	0.00
RAPE	5	5	0.00
ROBBERY	9	15	-40.00
Group A Offenses Against Property			
ARSON	2	2	0.00
BURGLARY - COMMERCIAL	30	88	-65.91
BURGLARY - RESIDENTIAL	30	30	0.00
LARCENY/THEFT	273	277	-1.44
MOTOR VEHICLE THEFT	54	76	-28.95
THEFT FROM A MOTOR VEHICLE	123	186	-33.87

2024 Calls Handled in Peachtree Corners

- Approximately **25,028** calls were handled by officers. There were **23,125** calls for service and 1,903 vehicle pull overs.
- In 2025 (YTD) **18,894** calls were handled by officers. There were **16,826** calls for service and **2,068** traffic stops.
- In 2024, units outside of Peachtree Corners responded to calls inside Peachtree Corners **4,777** times.
- In 2024, officers from other precincts handled **88** calls for service in Peachtree Corners.
- Off duty officers responded to **156** calls for service in 2024 (not including part time jobs).



2024 PTC Police Response Calls Involving 6 or More Officers

- In 2024, there were **208** calls that required **6 or more** officers.
- There were an additional **2,338** calls that required **3 to 5** officers.

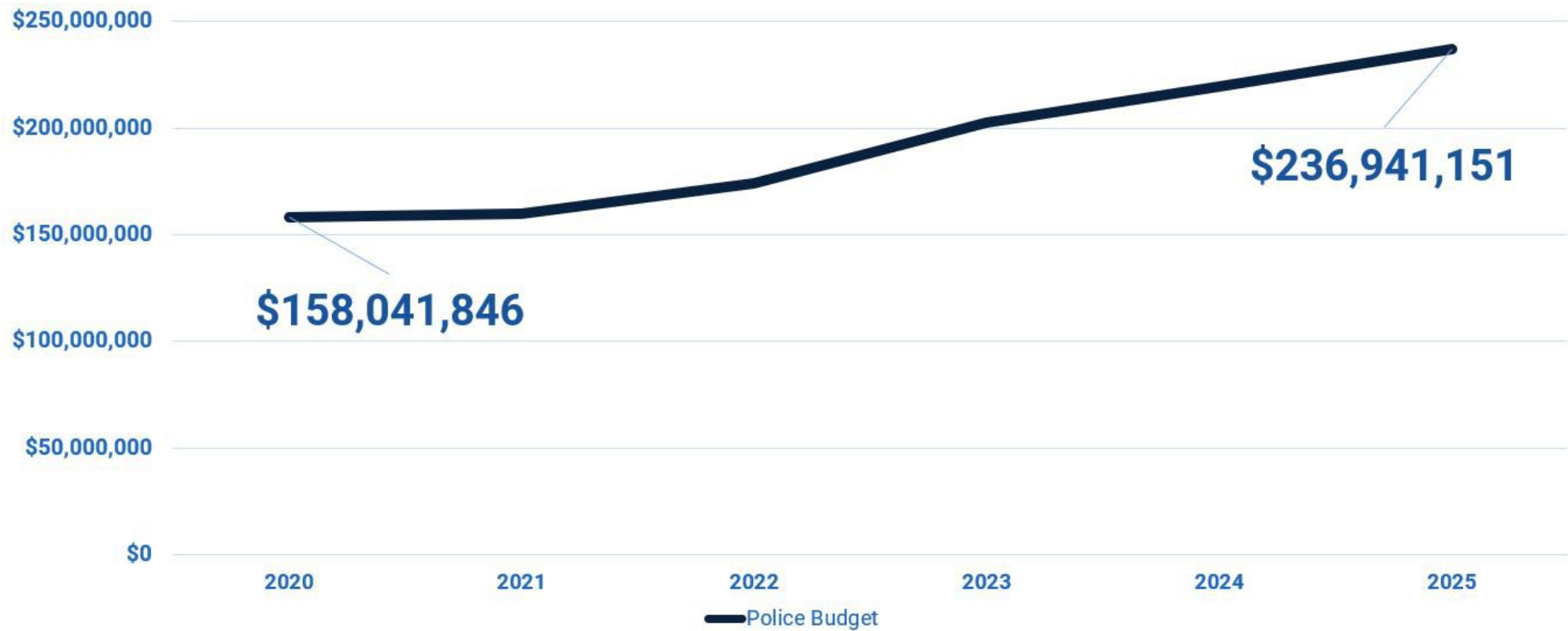
2024 Peachtree Corners Park Stats

	Area Checks	Suspicious Activities	Juvenile Complaints	Fights	Stolen Vehicles	Entering Autos	Property Damages	Robberies	Other
Holcomb Bridge Park	16	2							18
Jones Bridge Park	377	66					1		109
Pinckneyville Park	157	34			1		1		86
Simpsonwood Park	50	9					1		19
Totals	600	111	0	0	1	0	3	0	232

2025 Peachtree Corners Park Stats (January 1 to September 30)

	Area Checks	Suspicious Activities	Juvenile Complaints	Fights	Stolen Vehicles	Entering Autos	Property Damages	Robberies	Other
Holcomb Bridge Park	22	9							19
Jones Bridge Park	533	81							103
Pinckneyville Park	83	34				1			52
Simpsonwood Park	42	13							10
Totals	680	137	0	0	0	1	0	0	184

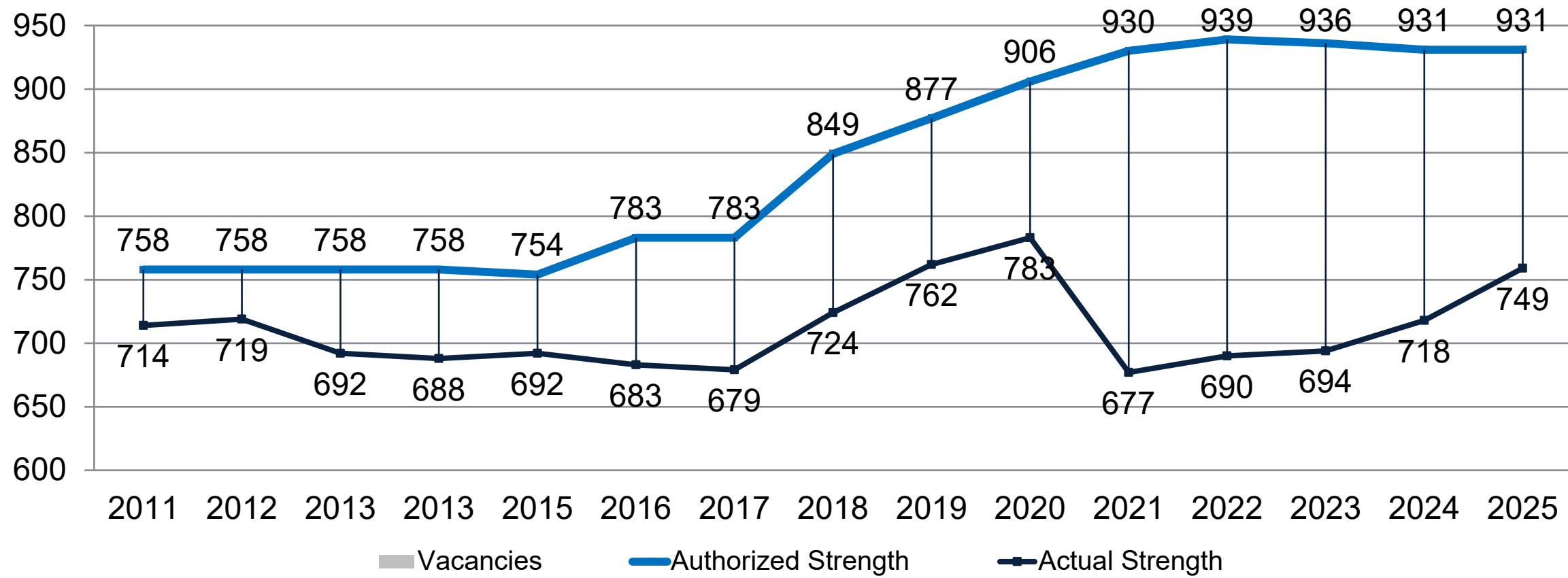
County Supported Mission



County Efforts to Recruit and Retain

Year	Market Adjustment/ COLA	Public Safety Specific	Pay for Performance	Total
2021	4%	4%	4%	12%
2022	8%	2%	4%	14%
2023	5%	3%	4%	12%
2024	5.3%	-	4%	9.3%
2025	*	*	4%	4%
Total	22.3%	9%	20%	51.3%

Manpower Challenges





People Strategies

- Annual Police Department Employee Meetings
- Investing in Education
- Brazilian Jiu-Jitsu (P.O.S.T.)
- Expanded Mentorship Program
- Critical Incident Stress Management (CISM)
- Well Equipped

City of Peachtree Corners Staffing

- **Assigned Personnel:** typically, 3-6 officers are specifically assigned to Peachtree Corners depending on time of day and day of week.
- **'Float' cars:** there are also two 'float' cars (164/165) that are not tethered to zones that respond to calls based on need.
- **Community Response Teams (CRT):** 6 officers assigned that handle special details, 'hot spots', and long-term initiatives.
 - Respond to zone calls as needed, including the city.
- **Specialized Units:** Aviation, K9, Gangs, SWAT FTE (full-time element), and Motors are typically in West District based on high frequency of calls, including the city.

Response Times

- Response manner is dictated by priority of call
- Less than 5% of call responses allow the use lights and sirens
- The remainder demands officers use 'due regard' in responding
- Governed by same traffic patterns and geography



Response Times

- Faster response does not always correlate with higher arrest rates—timely arrival is often a baseline expectation for community trust and legitimacy.
- Guaranteeing universally fast response times is challenging, as agencies contend with factors like call volume surges, staffing shortages, traffic, and geographic barriers.
- Providing assurances in decreasing response times by mere presence or staffing levels is unrealistic and misleading.



Response Times

Peachtree Corners

2024	Median Response Time
Priority 1 Calls	6:31
Priority 2 & 3 Calls	8:36
2025 YTD	
Priority 1 Calls	6:37
Priority 2 & 3 Calls	8:36

Service Delivery Strategy (SDS)

- State law requires cities and counties to define service districts and specify how the services will be funded.
- 2012 agreement - County would no longer collect taxes to support police services for those cities with their own police departments: Norcross, Lawrenceville, Suwanee, Duluth, Snellville, and Loganville.
- All were formed prior to the establishment of the Gwinnett County Police in March 1953.



Service Delivery Strategy

- With no funding, Gwinnett Police would no longer provide any type of police service, except SWAT, HDU, EMA and E911.
- The police department would continue full police services to non-police cities: Berkeley Lake, Buford, Grayson, Dacula, Peachtree Corners, Rest Haven, Sugar Hill and Mulberry.
- Unfortunately, according to the SDS for cities with police departments, the cities are **solely** responsible for their own policing.
- The 'police' cities willfully withdrew from these services and no longer provide any financial support for them.

Gwinnett Police Services

NOT included with SDS

- Homicide Unit
- Cold Case Homicide Unit
- Robbery Unit
- Special Victims Unit
- Internet Crimes Against Children Task Force (ICAC)
- Missing Persons Unit
- General Investigations Unit
- Electronic & Financial Crimes Unit
- Computer Forensics Lab
- Crime and Intelligence Analysts
- Technical Surveillance Unit
- Parcel Interdiction Team
- Gang Unit (Undercover & Uniform)
- Gun Crimes Unit
- DUI Task Force
- School Zone Enforcement
- Vice Unit (human trafficking, prostitution, gambling)

Gwinnett Police Services

NOT included with SDS (CONTINUED)

- Alcohol Inspections Unit
- Narcotics Unit
- Situational Awareness and Crime Response Center (SACRC)
- Joint Terrorism Task Force
- Crime Scene Investigations (24/7)
- Identification Unit
- Ballistics Unit (NIBIN)
- In House Crime Lab
- Evidence Unit
- K9 Unit
- Aviation Unit
- Accident Investigation Unit (fatalities/hit & run)
- Civil Emergency Team (RIOT Response)
- Full Time SWAT element
- Motors Unit
- Tele-Serve Unit

Gwinnett Police Services

NOT included with SDS (CONTINUED)

- Community Affairs Section
- Behavioral Health Unit
- Chaplain Section
- Internal Affairs Unit
- Background, Hiring, Recruiting Unit
- Public Information Office
- Training Division (recruit, firearms, vehicle operations, in-service)
- Inspections Unit
- GCIC/NCIC Unit
- Community Service Aides
- CALEA certification
- Police Legal Advisor
- Planning and Research
- Records Section
- Fleet Services
- Fiscal Management Unit
- Grants/Special Projects
- Permits Unit

Special Investigations Section

Total Drug Seizures with a Peachtree Corners Nexus (01/01/24 - 09/30/25)

- **170,226** Grams Marijuana (375 lbs.)
- **10,643** Grams Methamphetamine (23.44 lbs.)
- **25,348** Grams THC Edibles (55.37 lbs.)
- **6,830** Grams THC Wax (15 lbs.)
- **2,044** Grams Psilocybin (4.5 lbs.)
- **11.5** Grams Fentanyl (DEA: 2mg can kill a person)
 - Enough to kill 1 in every 7 residents of Peachtree Corners

Parcel Interdiction Unit

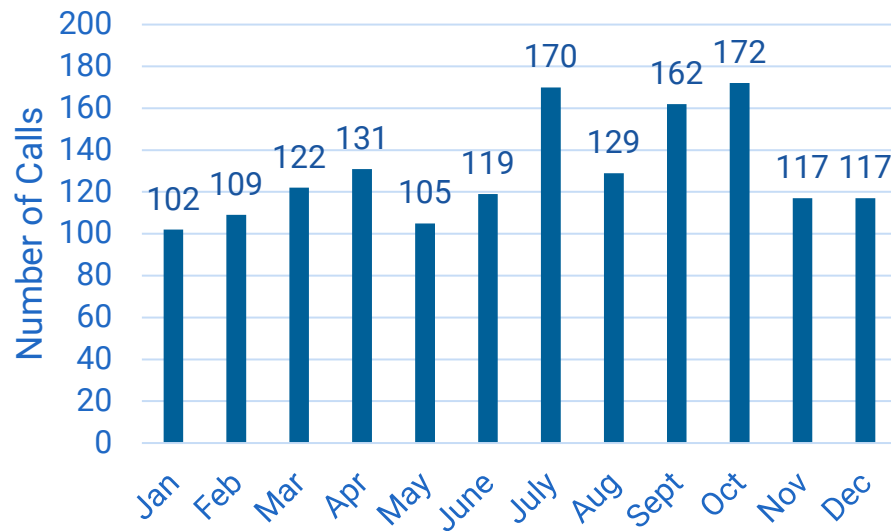
Total Drug Seizures with a Peachtree Corners Nexus (01/01/24 – 09/30/25)
39 packages:

- **178,411 grams** (374.52 lbs.) of Marijuana
- **10,643 grams** (2.14 lbs.) of Methamphetamine
- **27,760 grams** (55.37 lbs.) of THC Edibles
- **2,930 grams** (6.45 lbs.) of THC Oils
- **6,830 grams** (15.04 lbs.) of THC Wax
- **1,585 grams** (3.49 lbs.) of Psilocybin

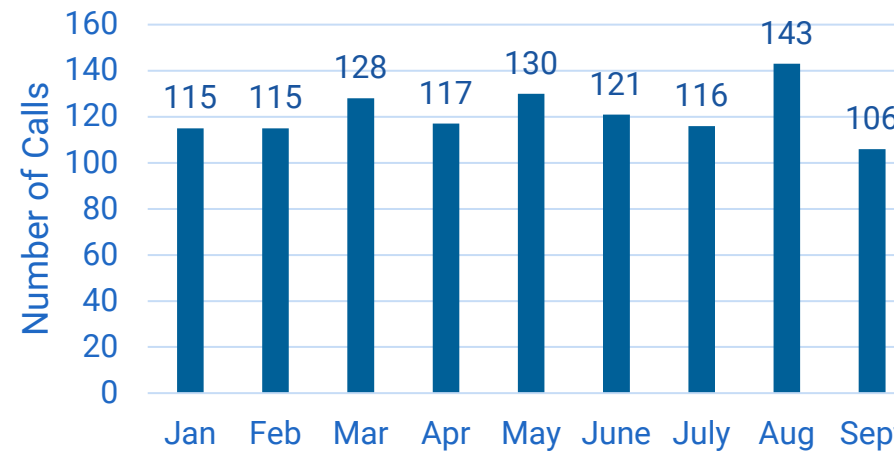
Tele-Serve Unit

- A real “force multiplier” - dedicated unit that handles calls by phone that would otherwise require a sworn presence.
- The Tele-Serve Unit streamlines operations, reduces response times, and optimizes resource allocation.

1,555 PTC Calls Handled in 2024



1,091 PTC Calls Handled in 2025 (YTD 09/30)



CAD/Cameras/RMS

Computer Aided Dispatch

- There are NO other agencies (Police or Marshal) that have access to our CAD system (Lilburn)
- This has always been the case, and this will always be the case

Camera Integration/Situational Awareness and Crime Response Center (SACRC)

- Gwinnett Police has access to 13,080 cameras (Flock, ALPR, DOT, Private, and Public)
- Gwinnett Police owns approximately 76, or 0.58% of those cameras, and does not have the authority to provide 3rd party access to any other Police department or Marshal in Gwinnett County (DOT, Private, Public not owned by police department)

Records Management System

- These databases contained private and protected information
- Allowing unfettered access with no oversight creates issues such as:
 - Privacy & Confidentiality/Security Concerns/Legal and Regulatory Restrictions
 - Data Integrity & Control/Interagency Trust & Policies/Resource Limitations/Liability Issues

Surge Capacity of Gwinnett Police

- Large agencies maintain specialized units and cross-trained personnel that can be rapidly redeployed to manage major events, emergencies, or crime spikes.
- They can utilize overtime, adjust shift structures, and call-in detectives for front-line duties much more readily due to higher staffing numbers.
- Large departments have greater access to equipment, technology, and logistics resources such as mobile command centers, armored vehicles, and extra patrol cars.

"Peachtree Corners, being a smaller agency, could experience a decrease in surge capacity that GCPD can offer." (CPSM Summary, pg. 72)



Surge Capacity examples in Peachtree Corners

Year	Scenario	Units Involved	Outcome	Units on scene
2022	Homicide (QT)	Precinct, CIS, CSI	Arrest	17
2022	Street Racers	Precinct, CRT, K9, Off-Duty Units	Arrest	29
2022	Home Invasion	Precinct, CRT, K9, Off-Duty Units	Arrest	54
2023	Domestic / Armed	Precinct, CNT	Arrest	21
2023	Fire / Person Stabbed	Precinct, CRT, BHU, SWAT, CIS, AIR 1	Arrest	45
2023	Shots Fired	Precinct, K9, SWAT, HDU, CNT, CIS, CSI	Arrest	51
2024	Stolen Vehicle	Precinct, BHU, SWAT, SIS, DUI, AIU, K9, AIR1	Arrest	37
2025	Missing 7yo / 11yo / 12yo	Precinct, AIR1, K9, CRT	Recovered	15
2023	Missing 82yo	Precinct, CRT, BHU, K9, DUI, SIS, EMA	Recovered	34
2025	Stolen Vehicle	Precinct, K9, CSI, COSA	Active	19
2025	Active Shooter (EDP)	Precinct, Off-Duty Units, BHU, K9	Arrest	57
2025	Person Hit By Vehicle	Precinct, AIU, AIR1	Ex-Cleared	19

CIS – Detectives

CSI – Crime Scene

BHU – Behavioral Health

HDU – Hazardous Devices

CNT – Negotiations

SIS – Narcotics

DUI – Task Force

EMA – Emergency Management

Threats

- Loss of Specialized Resources
- Operational Inefficiencies
- Reduced Interagency Cooperation
- Reduced Access to Regional Crime Data and Intelligence
- Training Quality and Standards May Vary
- Fragmentation and Redundancy
- Community Trust and Perception
- Legal and Liability Exposure

Questions?

