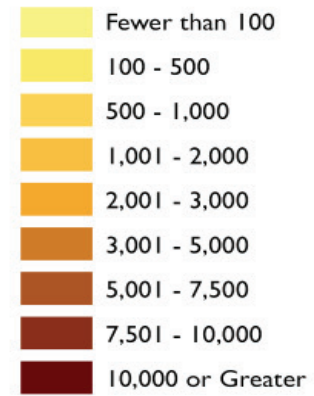
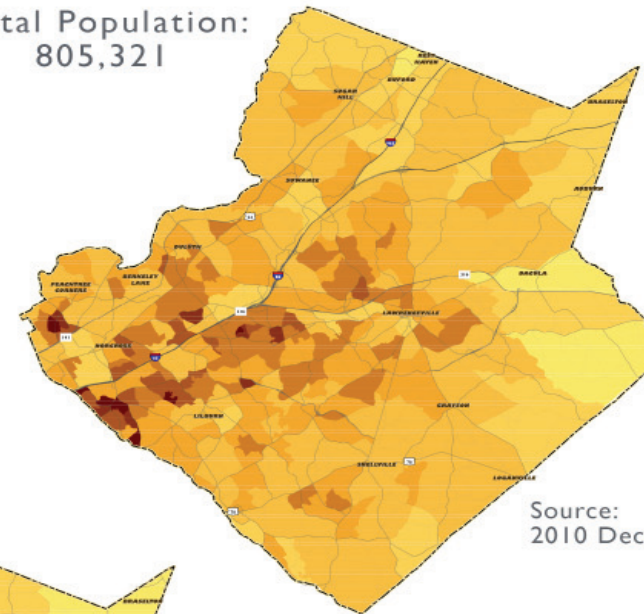


POPULATION DENSITY

Population Density
(persons per square mile)



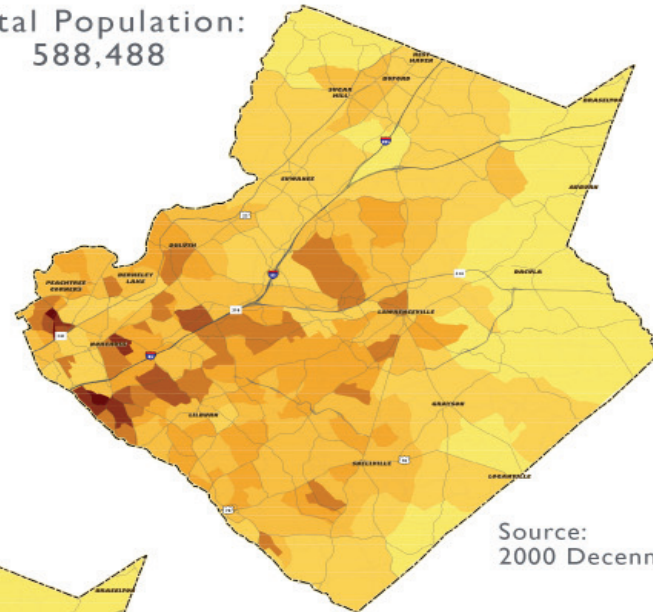
2010
Total Population:
805,321



Source:
2010 Decennial Census

36.9% Increase

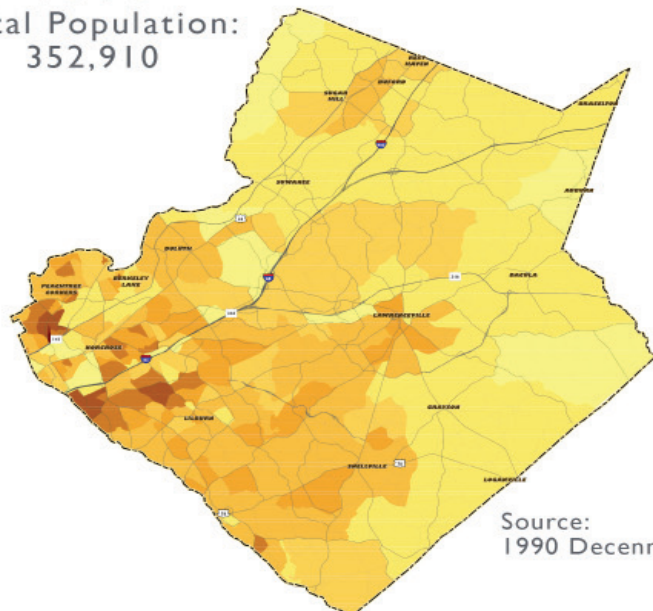
2000
Total Population:
588,488



Source:
2000 Decennial Census

66.7% Increase

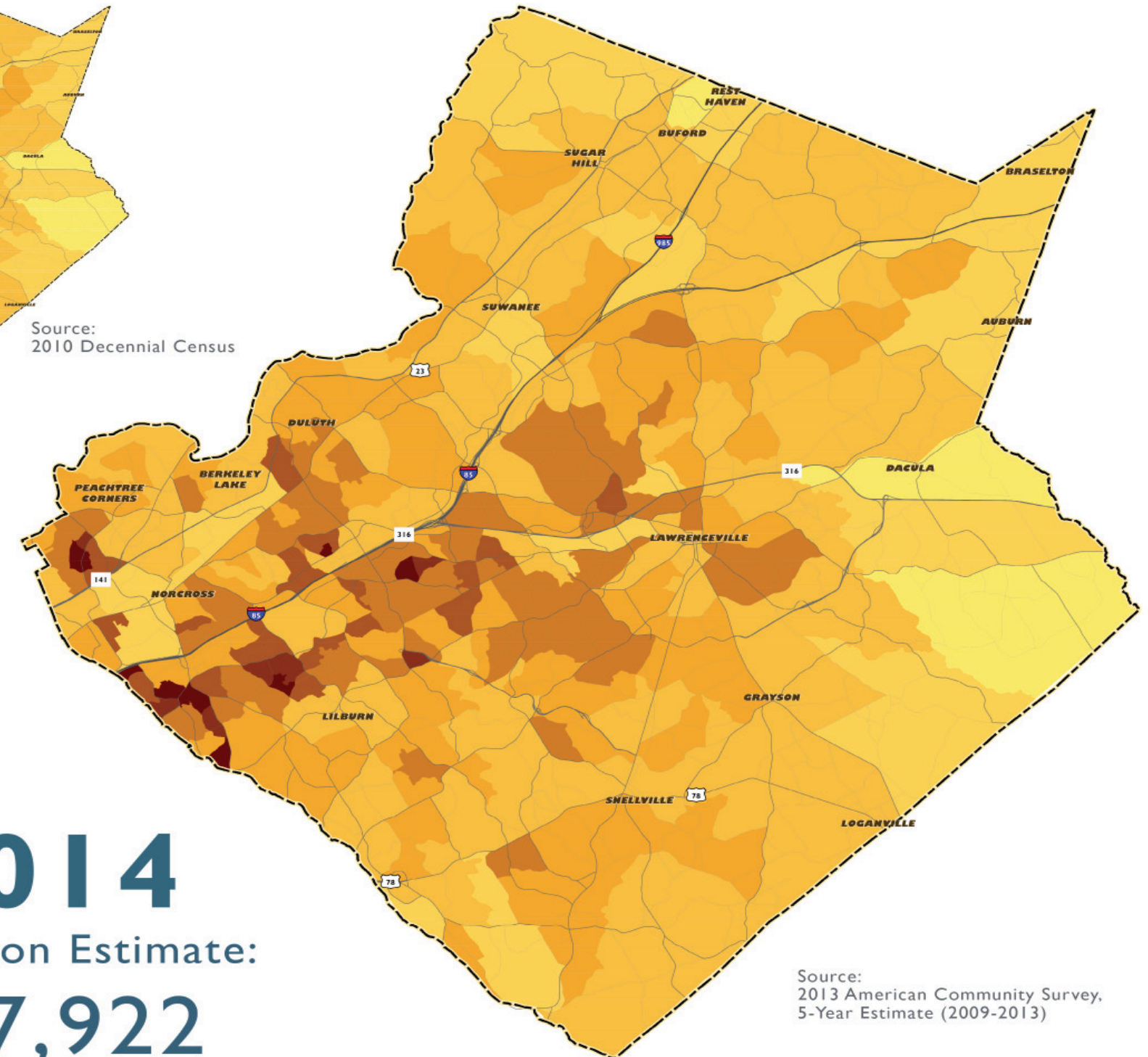
1990
Total Population:
352,910



Source:
1990 Decennial Census

2014
Population Estimate:
877,922

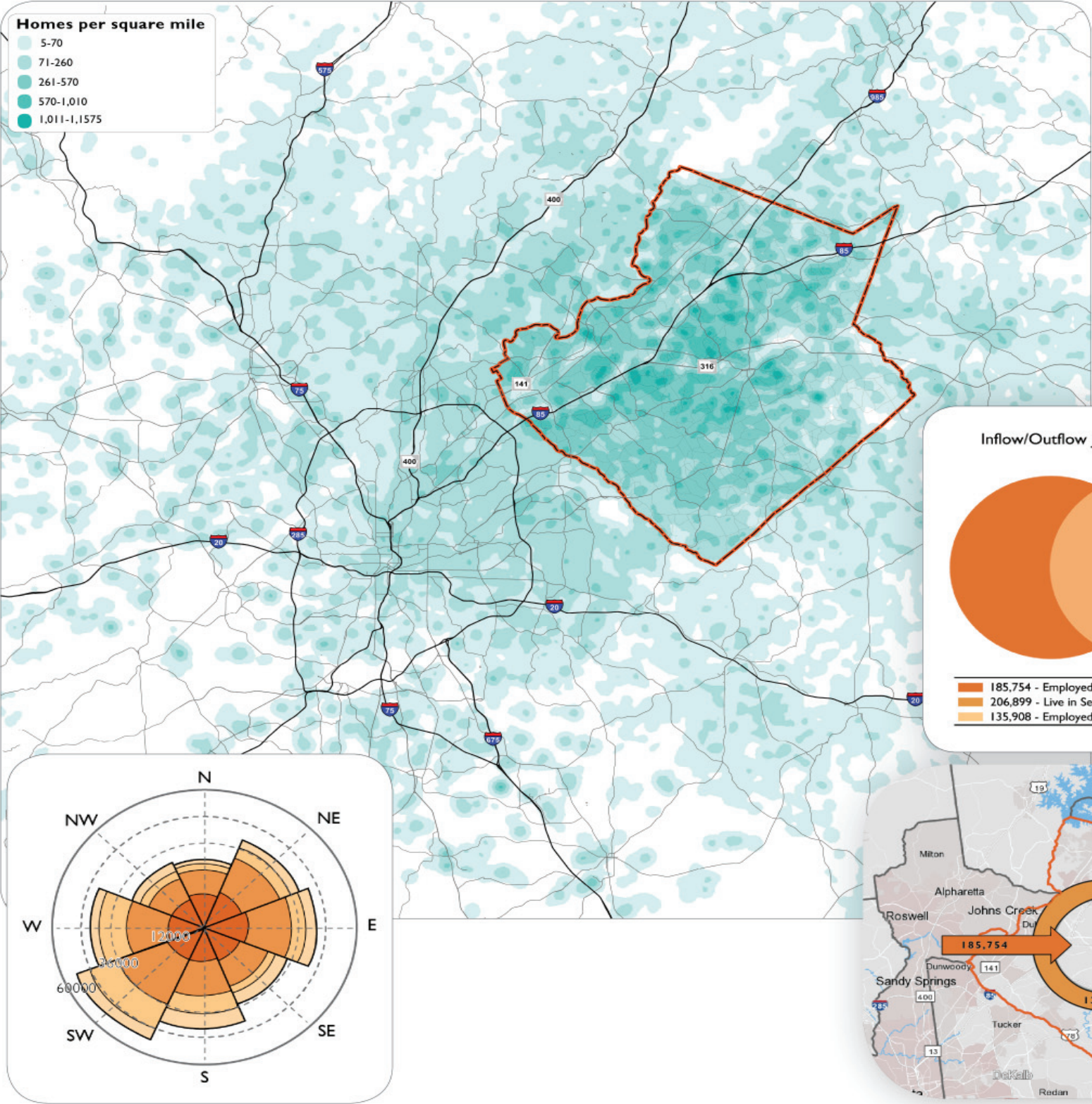
Source:
2014 Census Population Estimate



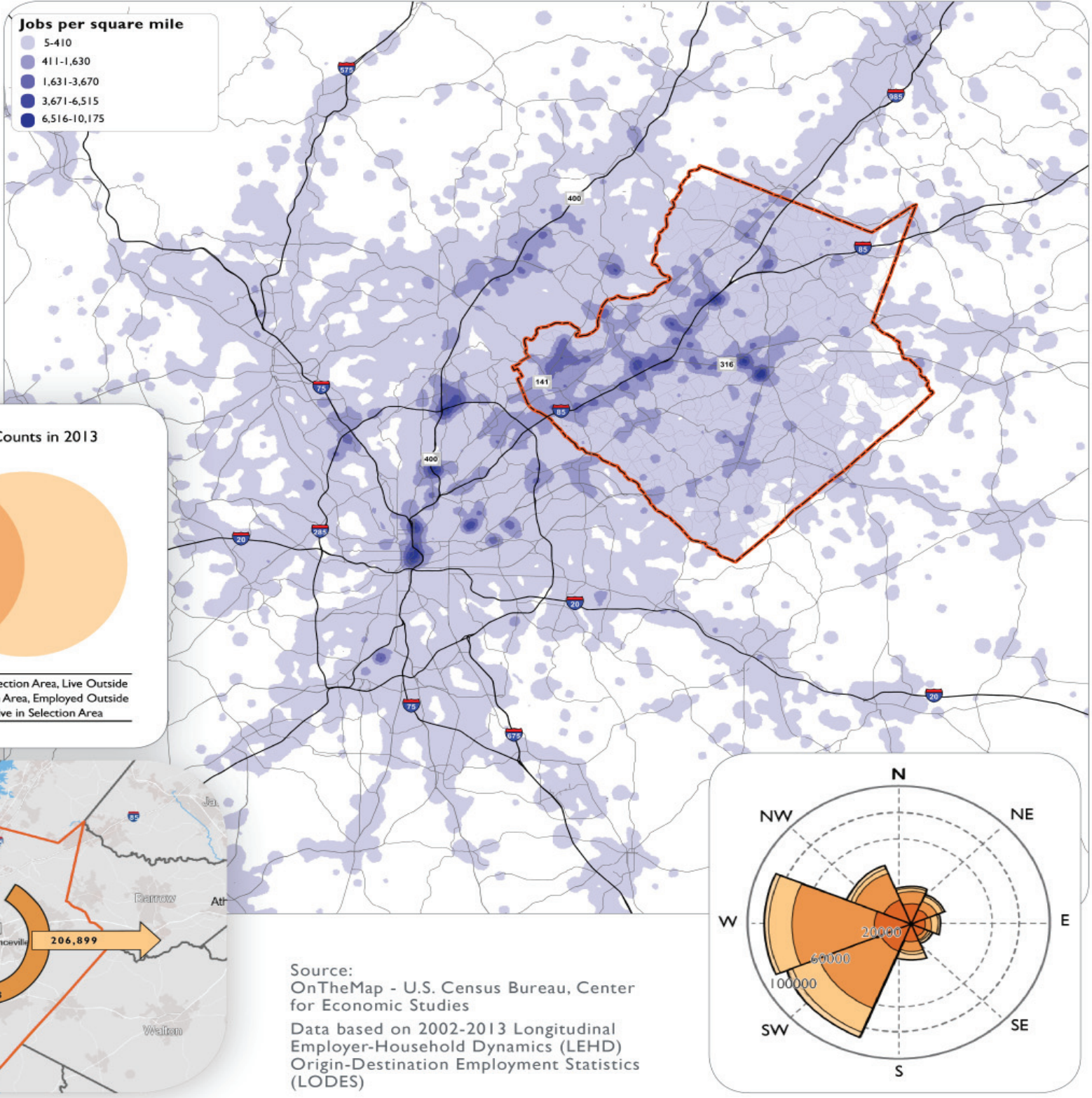
Source:
2013 American Community Survey,
5-Year Estimate (2009-2013)

DISTRIBUTION OF HOME AND WORK LOCATIONS

Where Gwinnett Workers Live

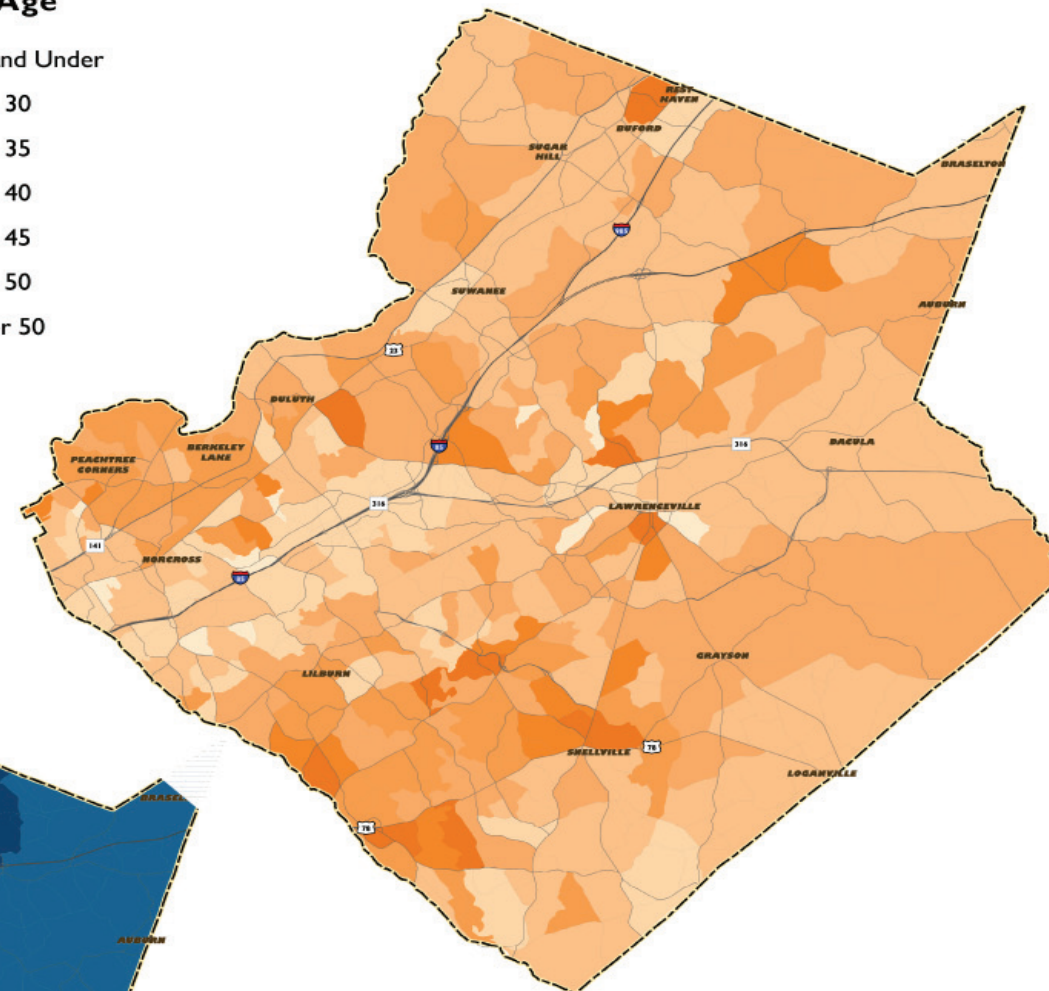
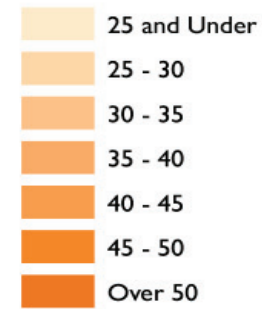


Where Gwinnett Residents Work



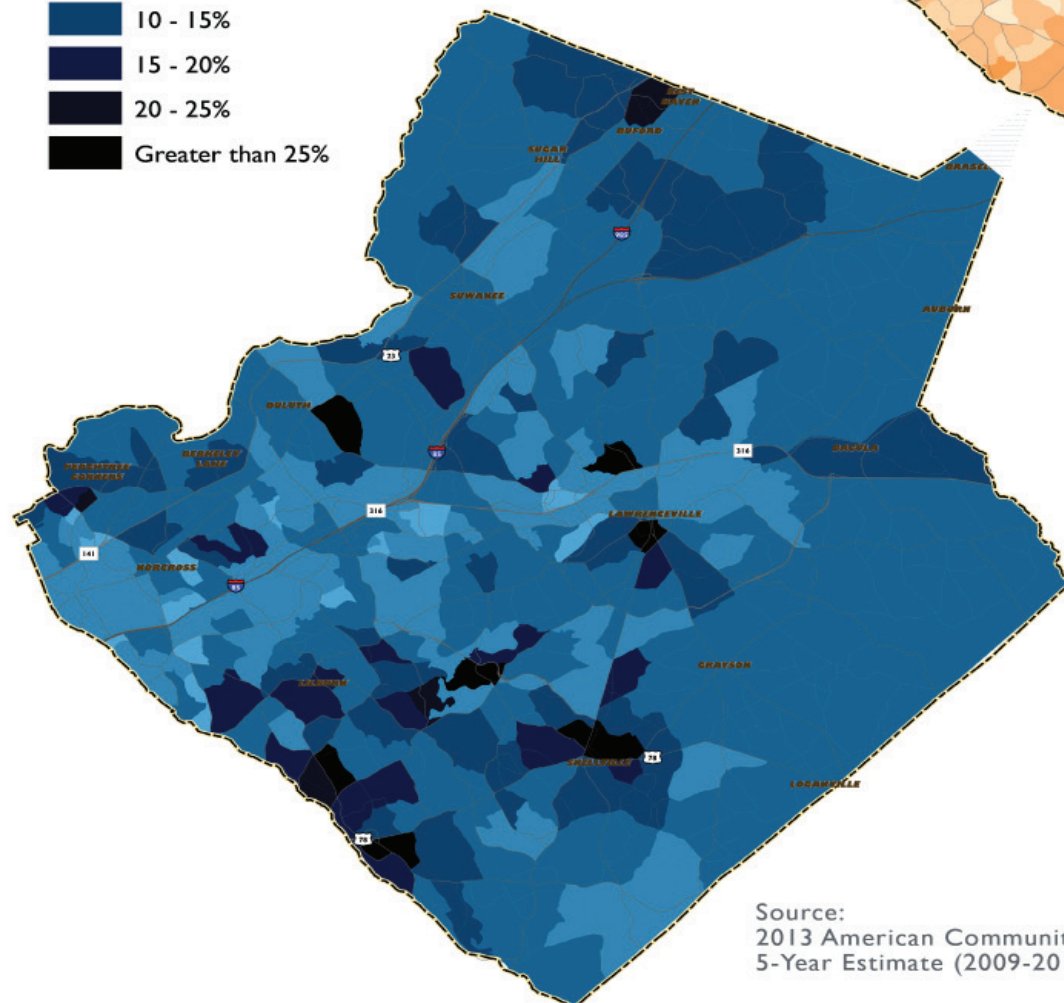
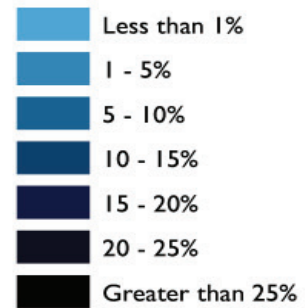
AGE OF POPULATION

Median Age



Source:
2013 American Community Survey,
5-Year Estimate (2009-2013)

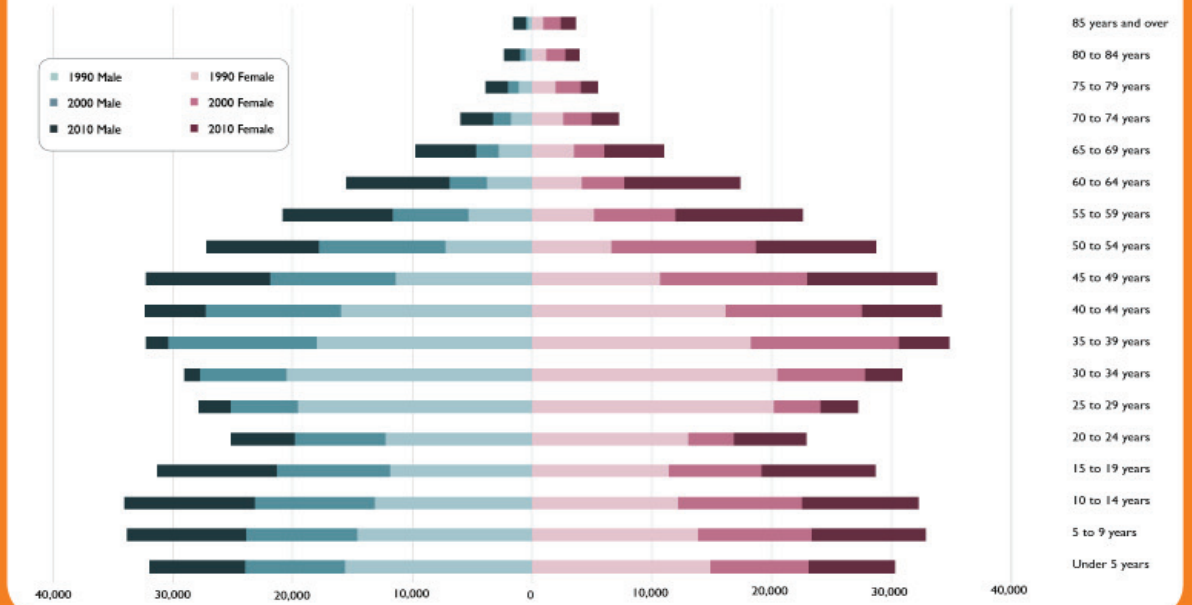
Population Age 65 and Older



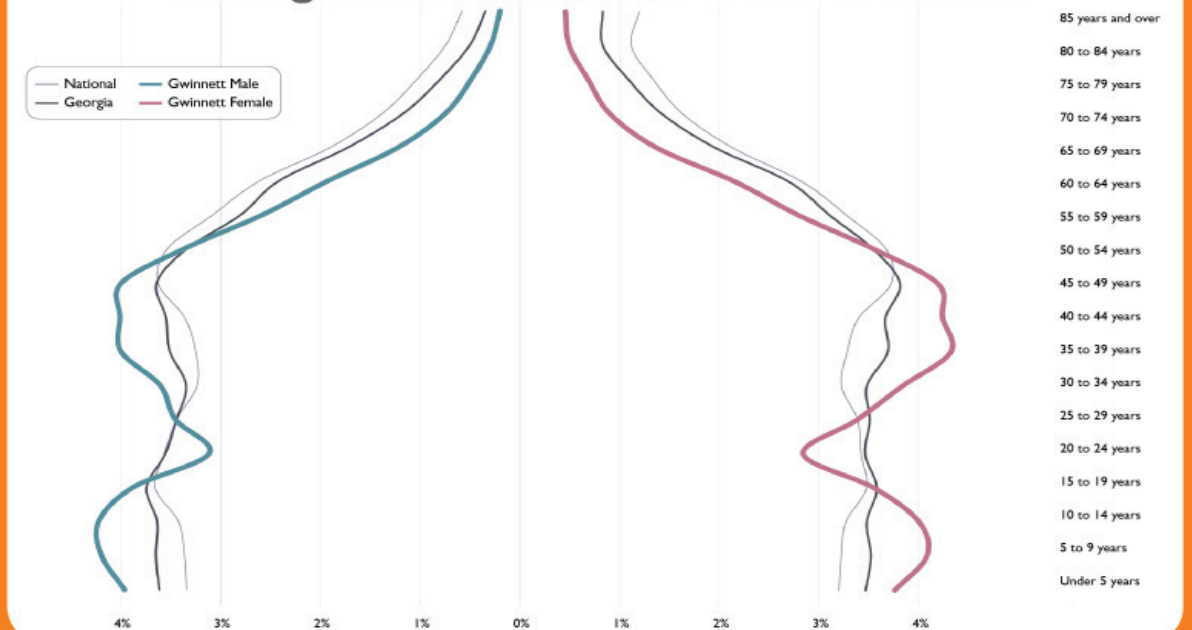
Source:
2013 American Community Survey,
5-Year Estimate (2009-2013)

POPULATION BY AGE AND GENDER

Gwinnett County: 1990, 2000, 2010



Comparison to Georgia and National Distributions



Source: 1990, 2000, 2010 Decennial Census