

**Destination2040**

Gwinnett's Comprehensive Transportation Plan

**gwinnett**county

# Recommendations Public Meetings

**February 27-March 20, 2017**

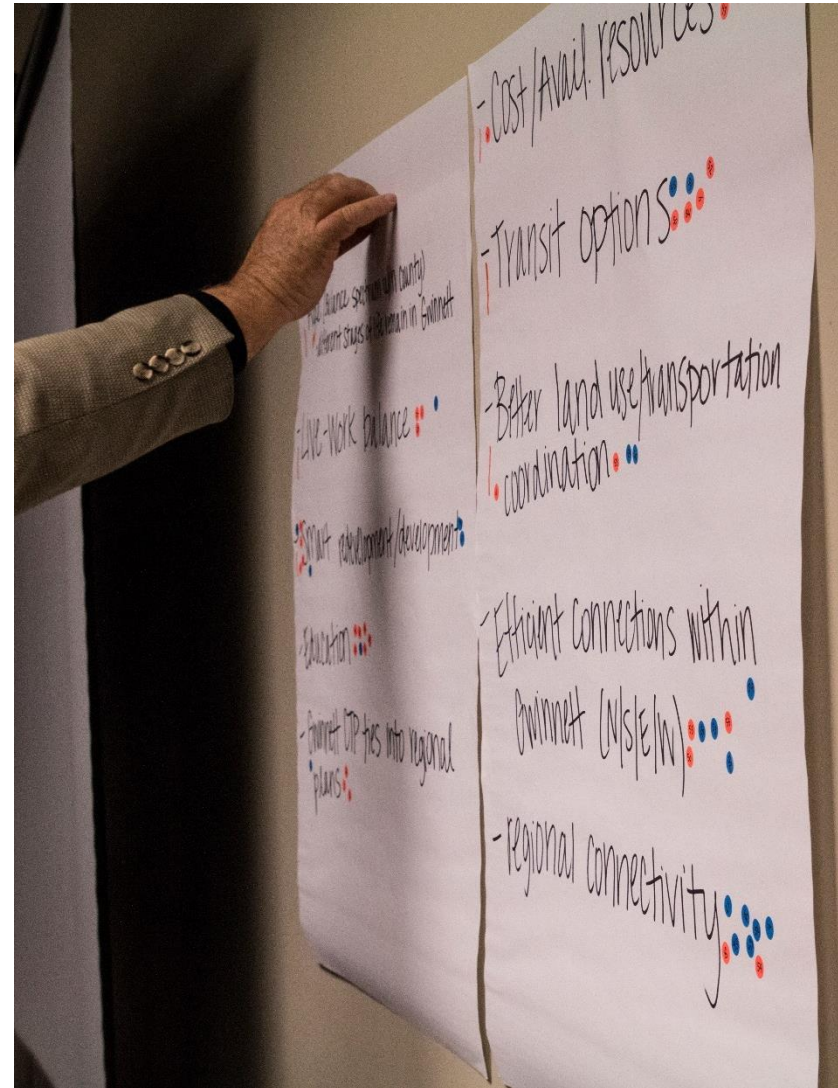
# Agenda

---

- Previous stakeholder and public meetings
- Recent accomplishments
- Public feedback on priorities
- How the plan addresses the feedback
- Next steps

# Vision and Goals

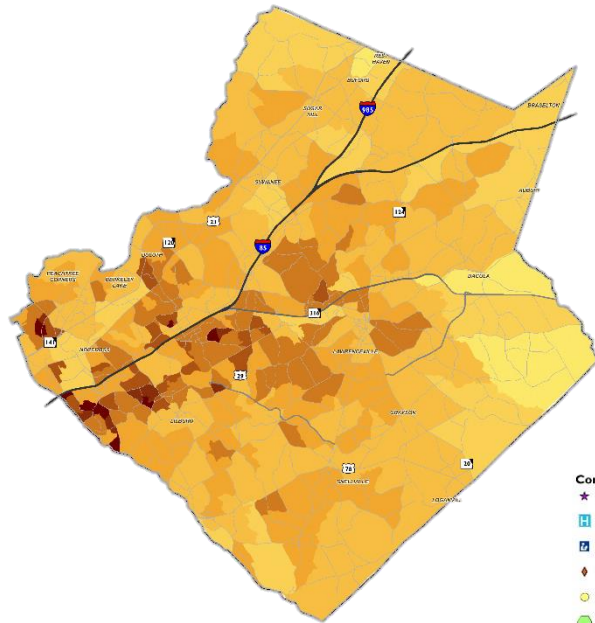
- Improve Connectivity
- Leverage the County's Transportation System to Improve Economic Vitality and Quality of Life
- Improve Safety and Mobility for All People Across All Modes of Travel
- Proactively Embrace Future Transportation Opportunities
- Continue to Serve as Responsible Stewards of Transportation Resources



# Needs Assessment

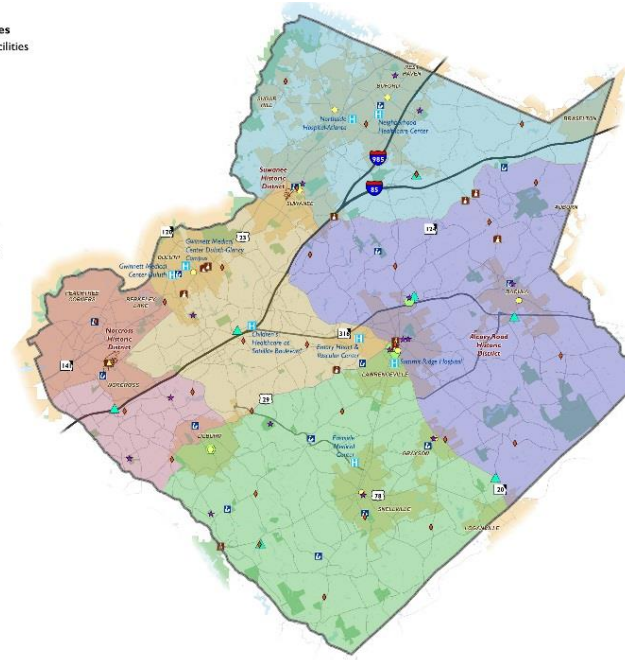
Destination2040

Gwinnett's Comprehensive Transportation Plan

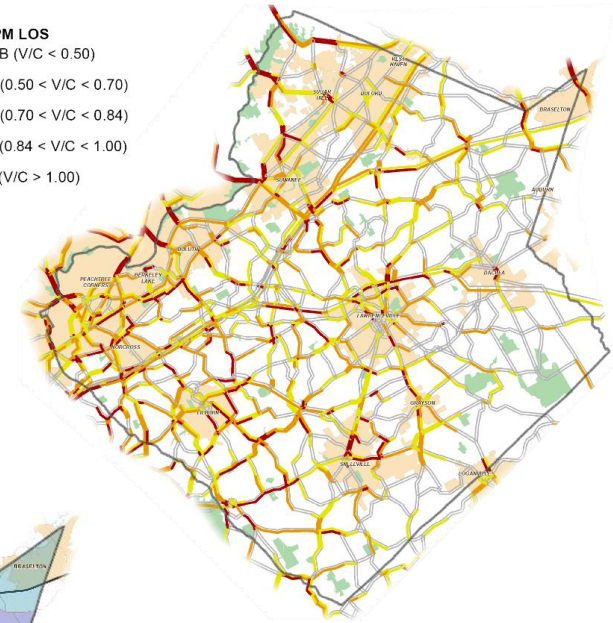


- Community Facilities**
- ★ Senior Citizen Facilities
  - H Hospitals
  - L Libraries
  - Fire Stations
  - City Halls
  - Courthouses
  - Police Precincts
  - Historic Markers
  - Historic Districts

- Police Districts**
- 1
  - 2
  - 3
  - 4
  - 5



- 2015 PM LOS**
- A/B ( $V/C < 0.50$ )
  - C ( $0.50 < V/C < 0.70$ )
  - D ( $0.70 < V/C < 0.84$ )
  - E ( $0.84 < V/C < 1.00$ )
  - F ( $V/C > 1.00$ )





**Gwinnett's Comprehensive Transportation Plan**



# Recent Accomplishments

- Finalized Vision, Goals, and Objectives
- Completed:
  - 6 public meetings
  - 25 stakeholder interview meetings
  - Online survey with >5000 respondents
  - 25 community events
  - Adjacent communities meeting
- Finished establishing Existing Conditions
- Determined baseline Needs Assessment and future needs
- Developed universe of possible transportation projects

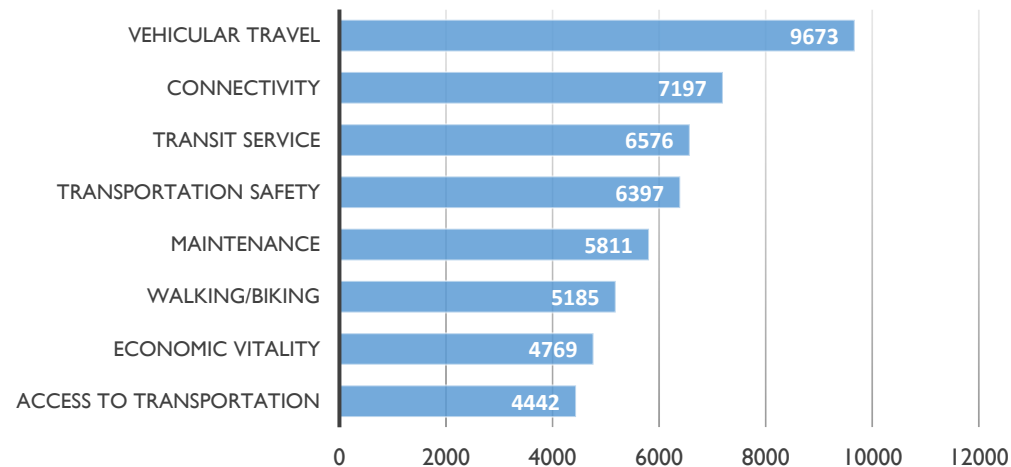
# Public Feedback on Priorities

Destination2040

Gwinnett's Comprehensive Transportation Plan

	OVERALL	PARKS	SENIOR	EVENTS	PUBLIC MTG	METROQUEST
VEHICULAR TRAVEL	1	2	2	3	1	1
CONNECTIVITY	2	5	6	5	2	2
TRANSIT SERVICE	3	6	3	6	3	3
TRANSPORTATION SAFETY	4	3	5	2	4	4
MAINTENANCE	5	1	4	4	5	5
WALKING/BIKING	6	4	7	1	7	7
ECONOMIC VITALITY	7	8	8	8	6	6
ACCESS TO TRANSPORTATION	8	7	1	7	8	8
TOTAL RESPONSES	4,978	347	96	297	211	4,028

## Citizen Priority Rankings (Weighted)



# Destination2040

Gwinnett's Comprehensive Transportation Plan

## HOW THE PLAN ADDRESSES PUBLIC FEEDBACK



- Universe of projects
  - Previously developed projects
  - Needs assessment analysis
  - Stakeholder and public outreach
  - County service requests
  - County, City, and CID recommendations
  - Projects from current Citizens Project Selection Committee
- Evaluation of projects
  - Built on Vision and Goals
  - Coordinated with County SPLOST evaluation process
- Projects in consideration today
  - Lowest scoring projects not advanced for consideration
  - List is NOT financially constrained

# Destination2040

Gwinnett's Comprehensive Transportation Plan

## GOAL: IMPROVE CONNECTIVITY

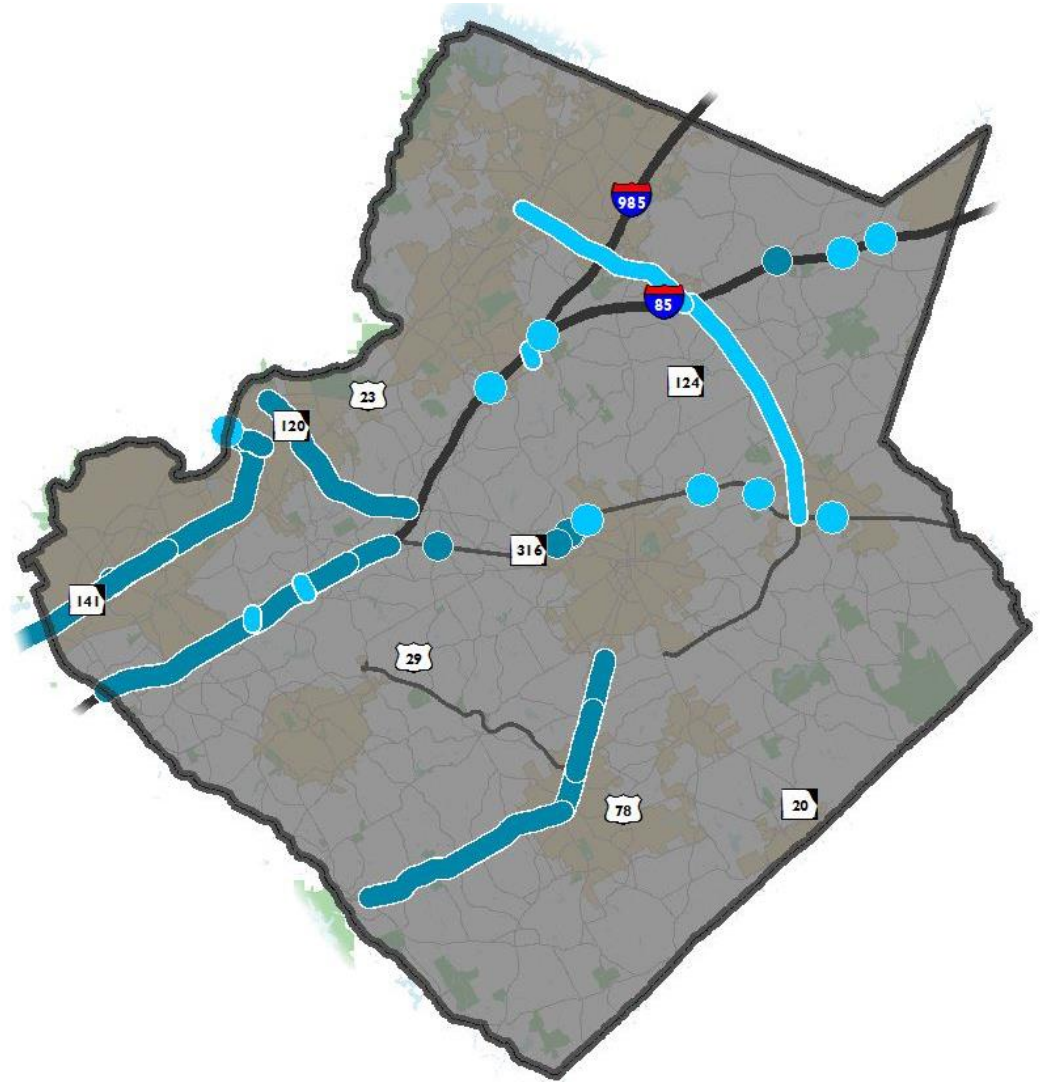
# New and Improved Connectivity

Destination2040

Gwinnett's Comprehensive Transportation Plan

## New Connections

- Capacity Improvements
- New Connections/ Interstate Crossings

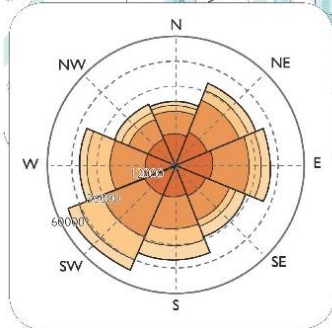
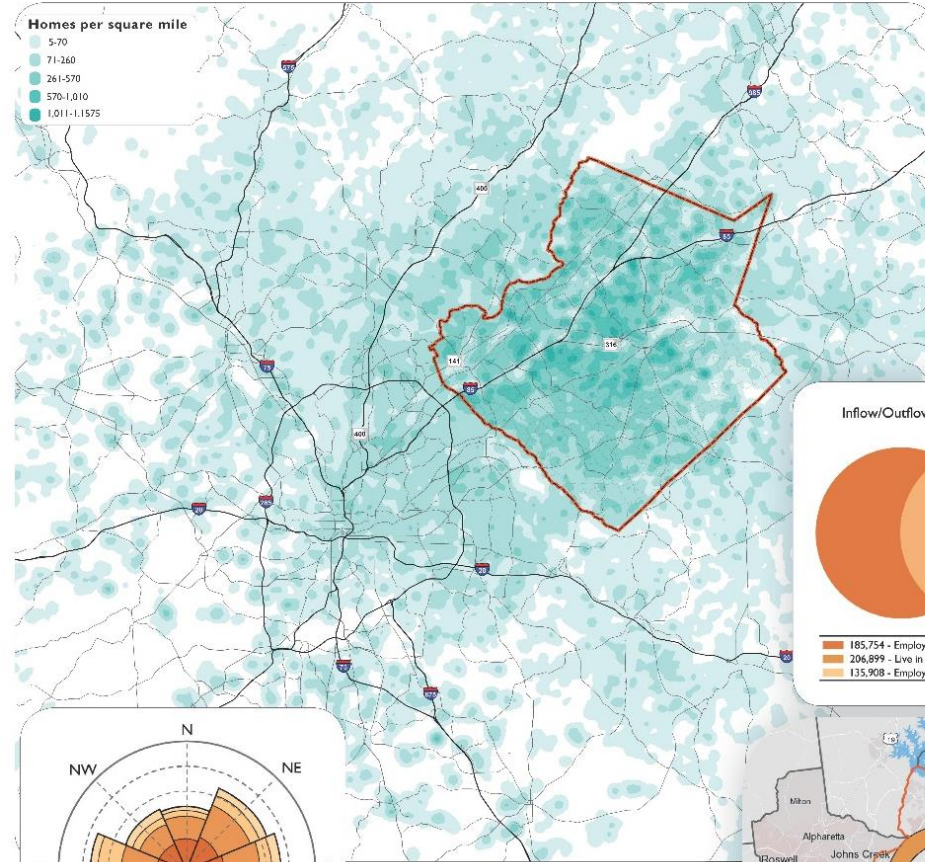


# Home and Work Locations

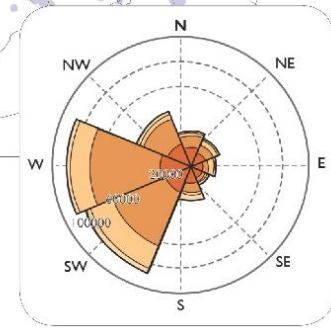
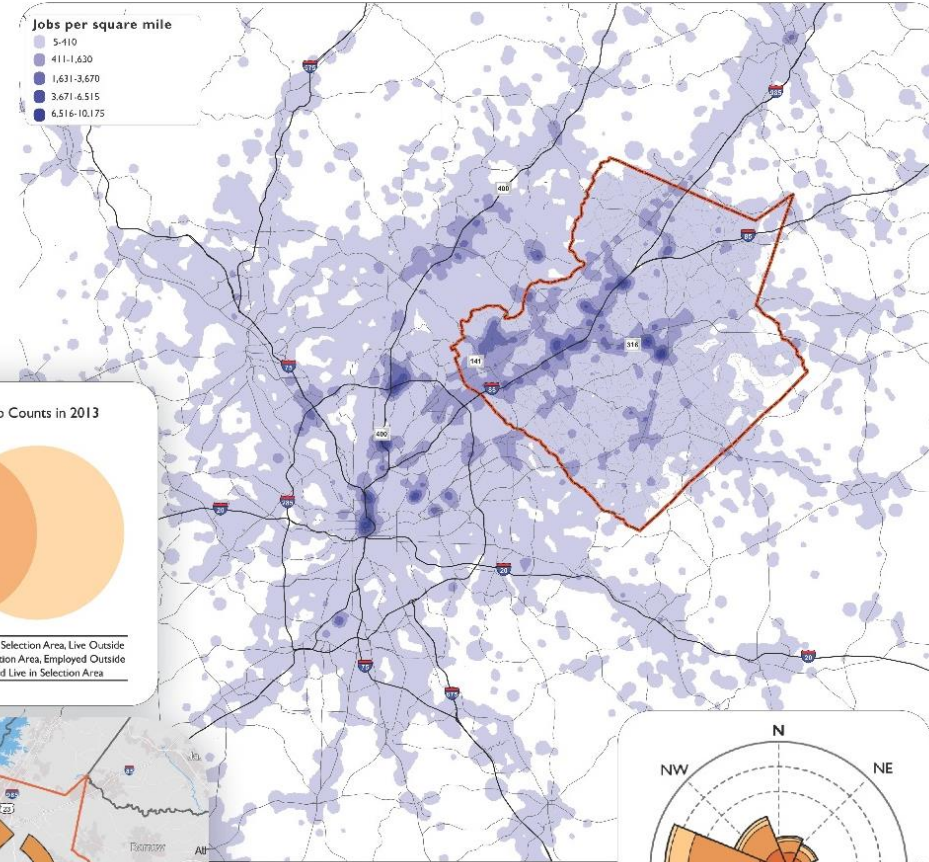
Destination2040

Gwinnett's Comprehensive Transportation Plan

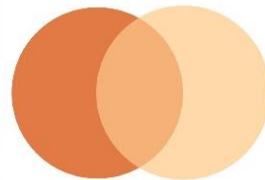
## Where Gwinnett Workers Live



## Where Gwinnett Residents Work



Inflow/Outflow Job Counts in 2013



185,754 - Employed in Selection Area, Live Outside  
206,899 - Live in Selection Area, Employed Outside  
135,908 - Employed and Live in Selection Area



Source:  
OnTheMap - U.S. Census Bureau, Center  
for Economic Studies

Data based on 2002-2013 Longitudinal  
Employer-Household Dynamics (LEHD)  
Origin-Destination Employment Statistics  
(LODES)



# Transit Connectivity

Destination2040

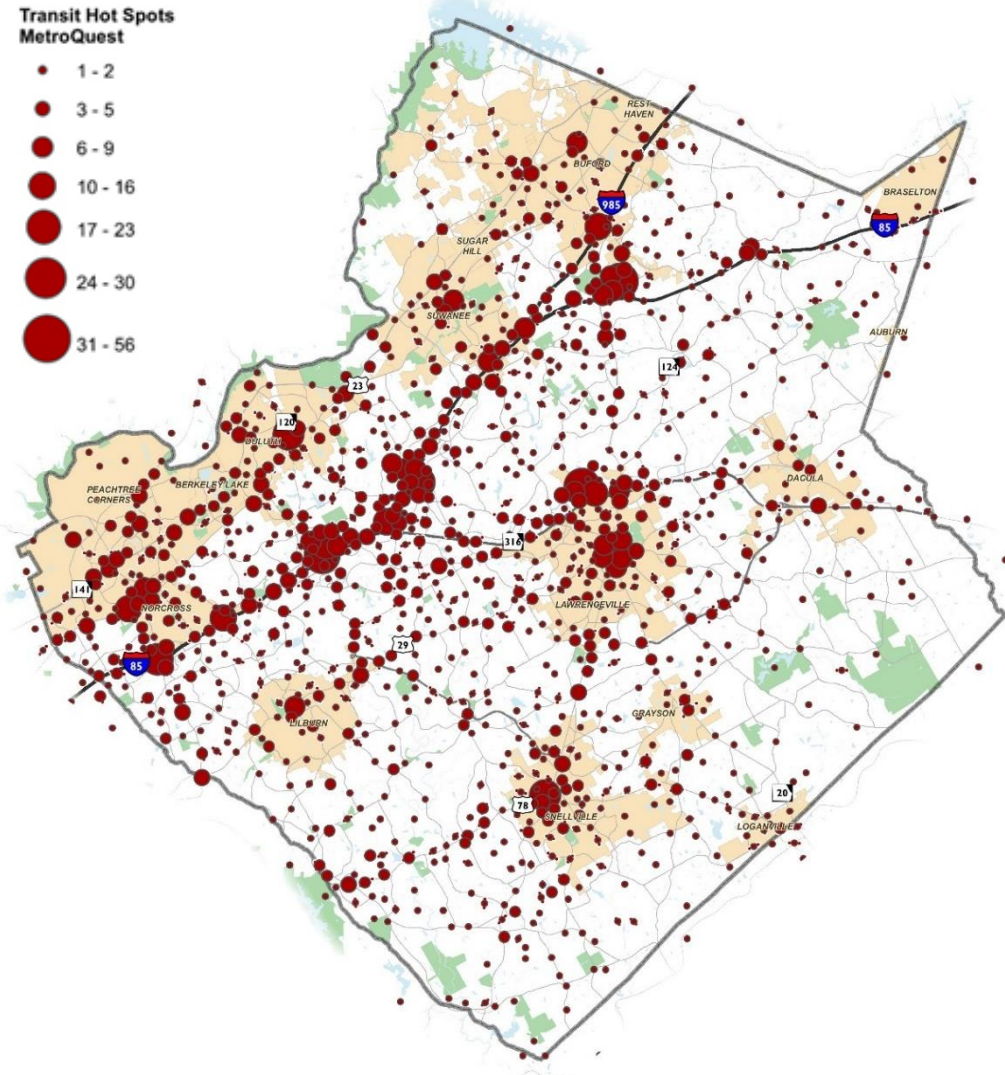
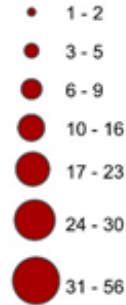
Gwinnett's Comprehensive Transportation Plan

Short-term CTP  
Recommendation:

Comprehensive Transit  
Development Plan

*Beginning Spring 2017*

Transit Hot Spots  
MetroQuest



# Destination2040

Gwinnett's Comprehensive Transportation Plan

**GOAL: LEVERAGE THE COUNTY'S  
TRANSPORTATION SYSTEM TO  
IMPROVE ECONOMIC VITALITY  
AND QUALITY OF LIFE**

# Economic Vitality

Destination2040

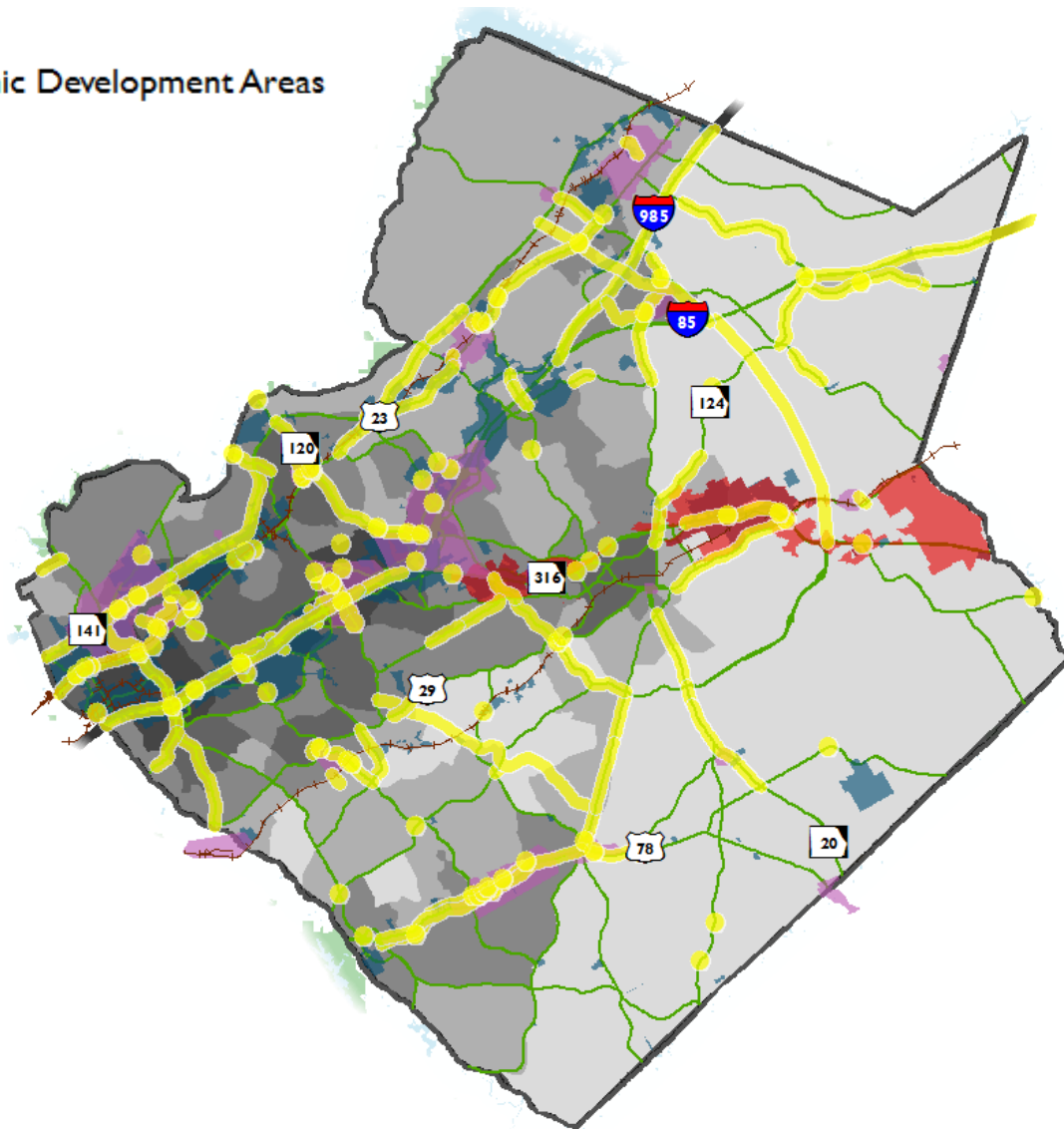
Gwinnett's Comprehensive Transportation Plan

## Economic Vitality

- Projects near Industrial, Freight, R&D and Economic Development Areas
- Activity Centers
- Research and Development Corridors
- Industrial Zoning Areas
- Truck Routes
- Railroads

## Economic Development Asset Index

- Low
- 
- 
- 
- High



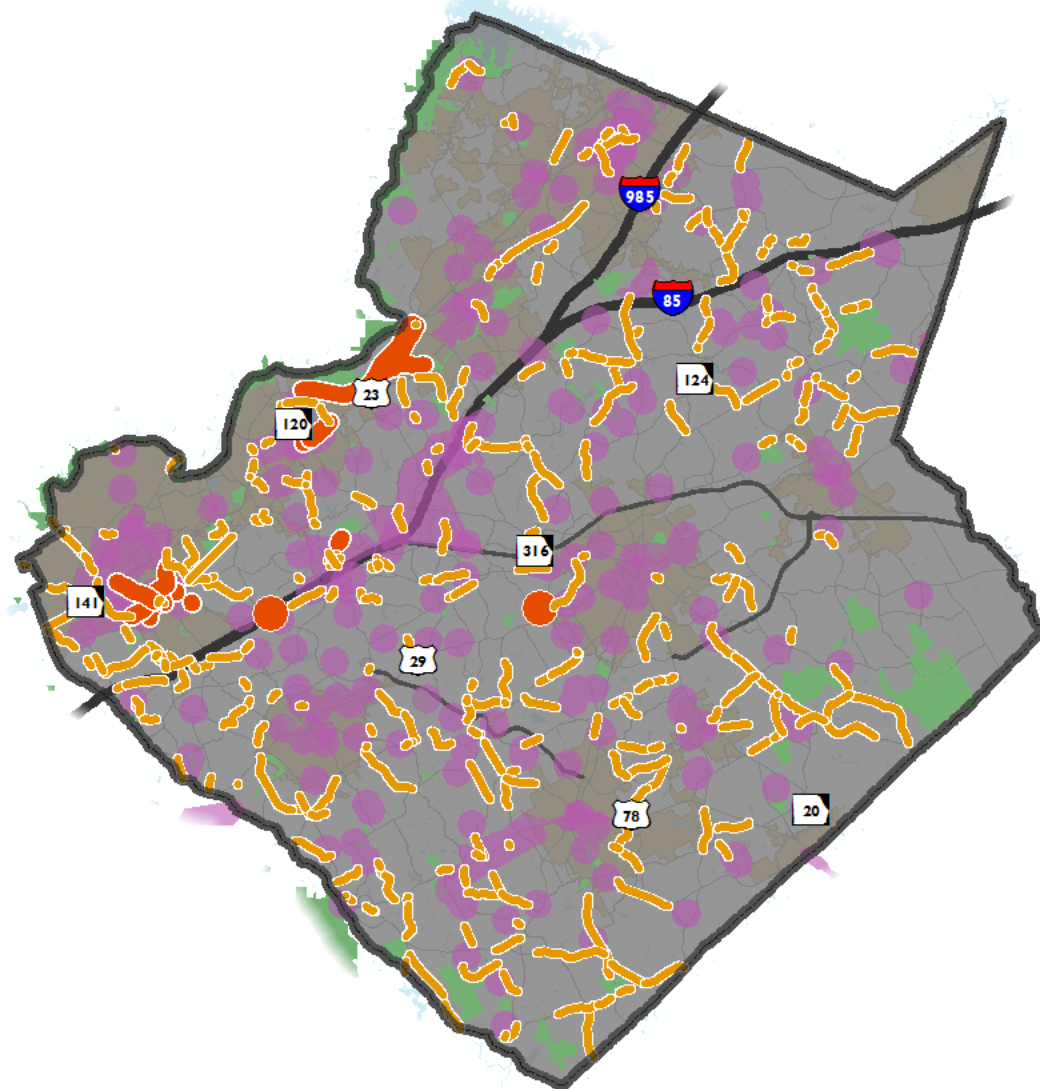
# Quality of Life – Bicycle/Pedestrian

Destination2040

Gwinnett's Comprehensive Transportation Plan

## Community Livability/ Quality of Life

- Sidewalks Projects Considered for Evaluation
- Other Potential Bicycle/Pedestrian Projects
- Activity Centers & Community Facilities
- Parks





# Quality of Life – Trails

Destination2040

Gwinnett's Comprehensive Transportation Plan

## Trails

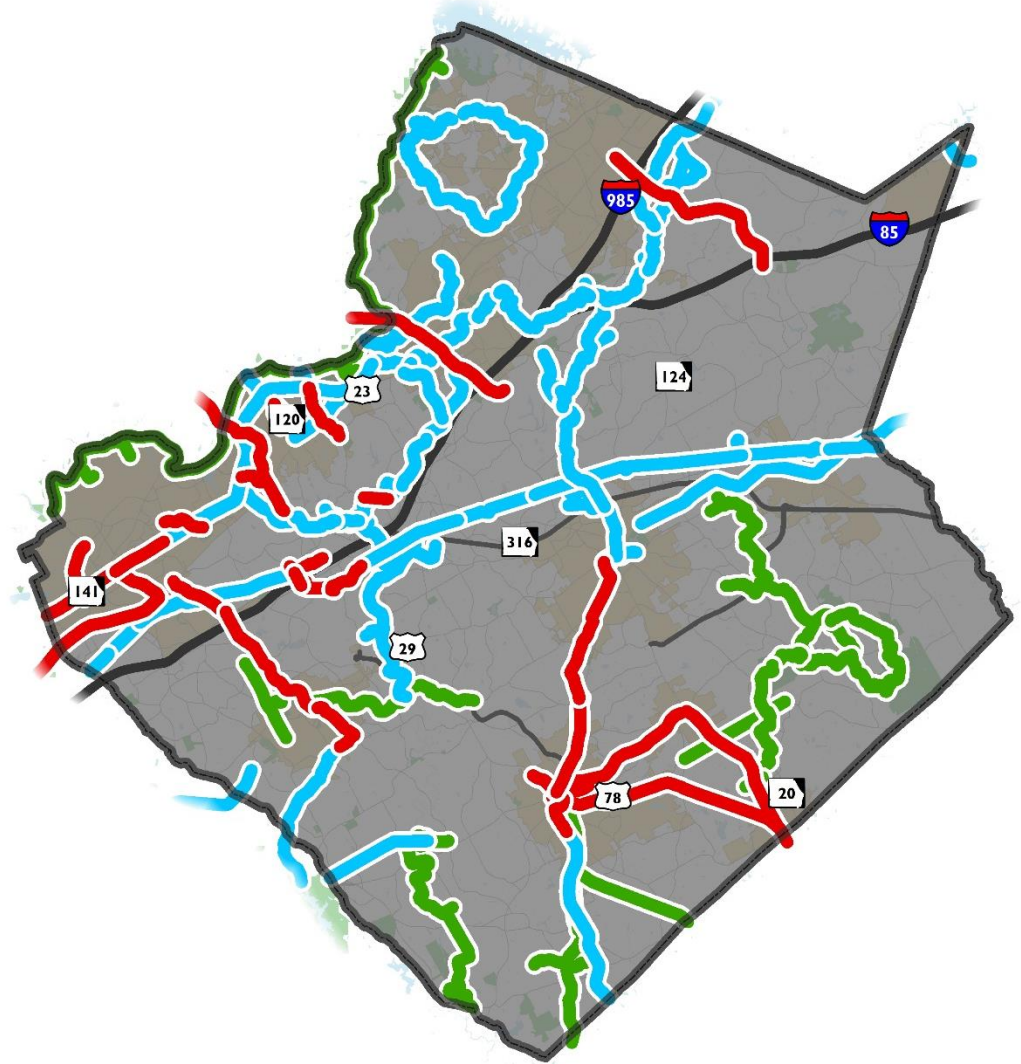
Transportation

Hybrid

Recreational

## Countywide Trails Master Plan

*Currently Underway*



# Destination2040

Gwinnett's Comprehensive Transportation Plan

**GOAL: IMPROVE SAFETY AND  
MOBILITY FOR ALL PEOPLE  
ACROSS ALL MODES OF TRAVEL**

# Safety Improvement Projects

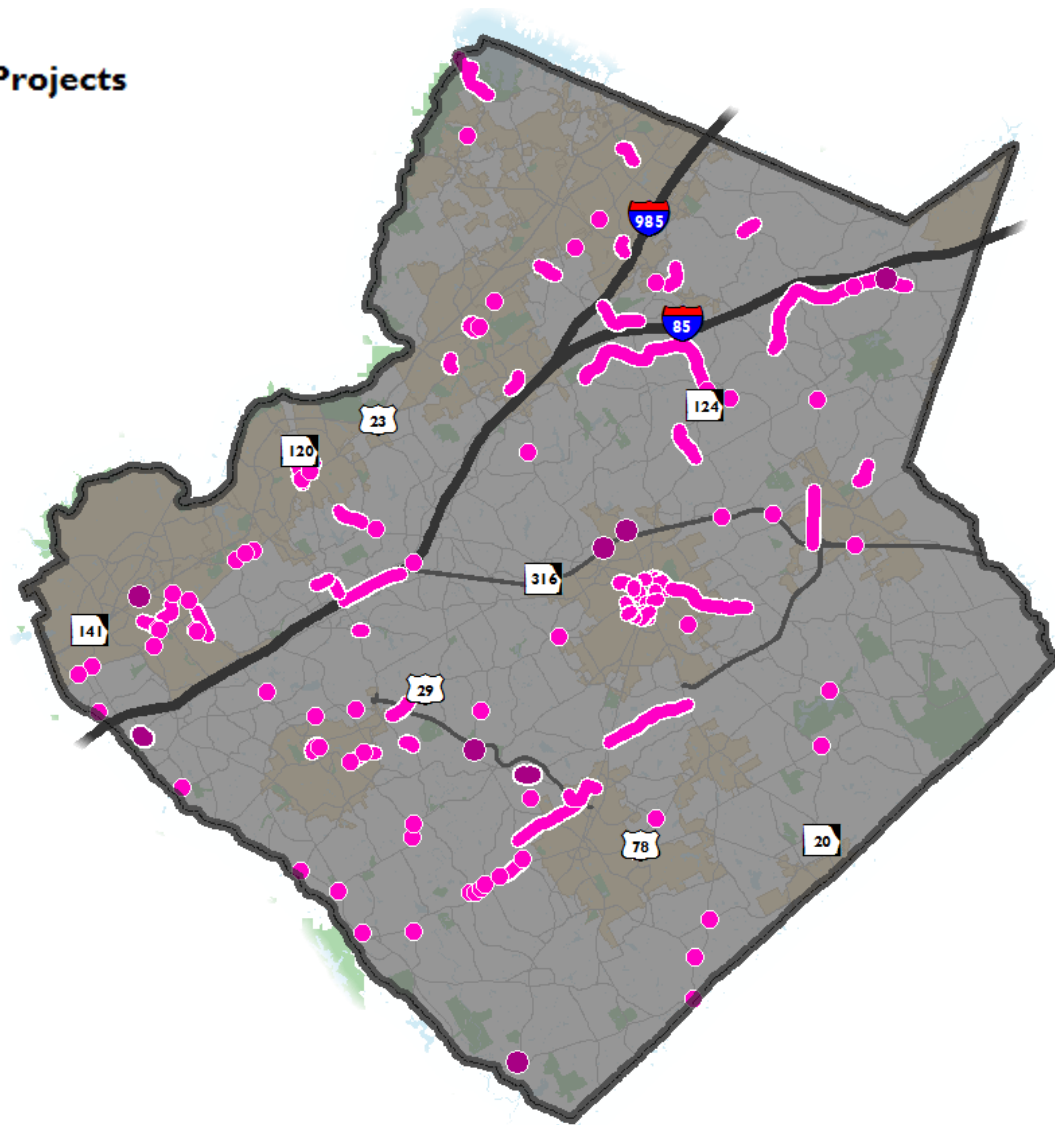
Destination2040

Gwinnett's Comprehensive Transportation Plan

## School Safety and Road Safety & Alignment Projects

● School Safety Projects

— Road Safety & Alignment Projects



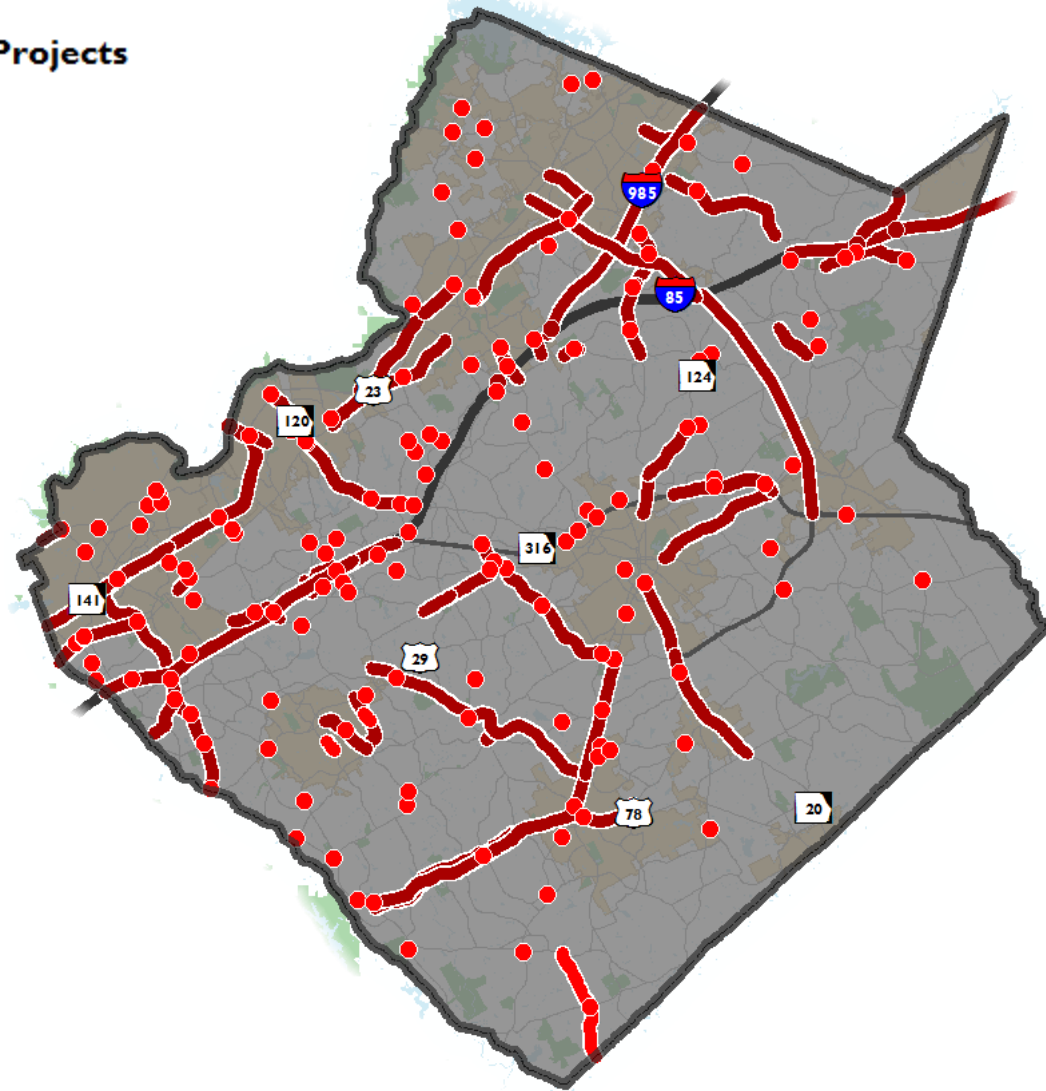
# Mobility Improvement Projects

Destination2040

Gwinnett's Comprehensive Transportation Plan

## Major Road Improvements and Intersection Projects

- Intersection Projects
- Major Roadway Improvement Projects





# Destination2040

Gwinnett's Comprehensive Transportation Plan

**GOAL: PROACTIVELY EMBRACE  
FUTURE TRANSPORTATION  
OPPORTUNITIES**

# Improved Technology

Destination2040

Gwinnett's Comprehensive Transportation Plan



## Advanced Traffic Management System (ATMS) Plan

*Currently Underway*





**New Diverging Diamond Interchange Bridge  
at Jimmy Carter Boulevard**

# Destination2040

Gwinnett's Comprehensive Transportation Plan

**GOAL: CONTINUE TO SERVE AS  
RESPONSIBLE STEWARDS OF  
TRANSPORTATION RESOURCES**




# Repair/Replace Roads and Bridges

Destination2040

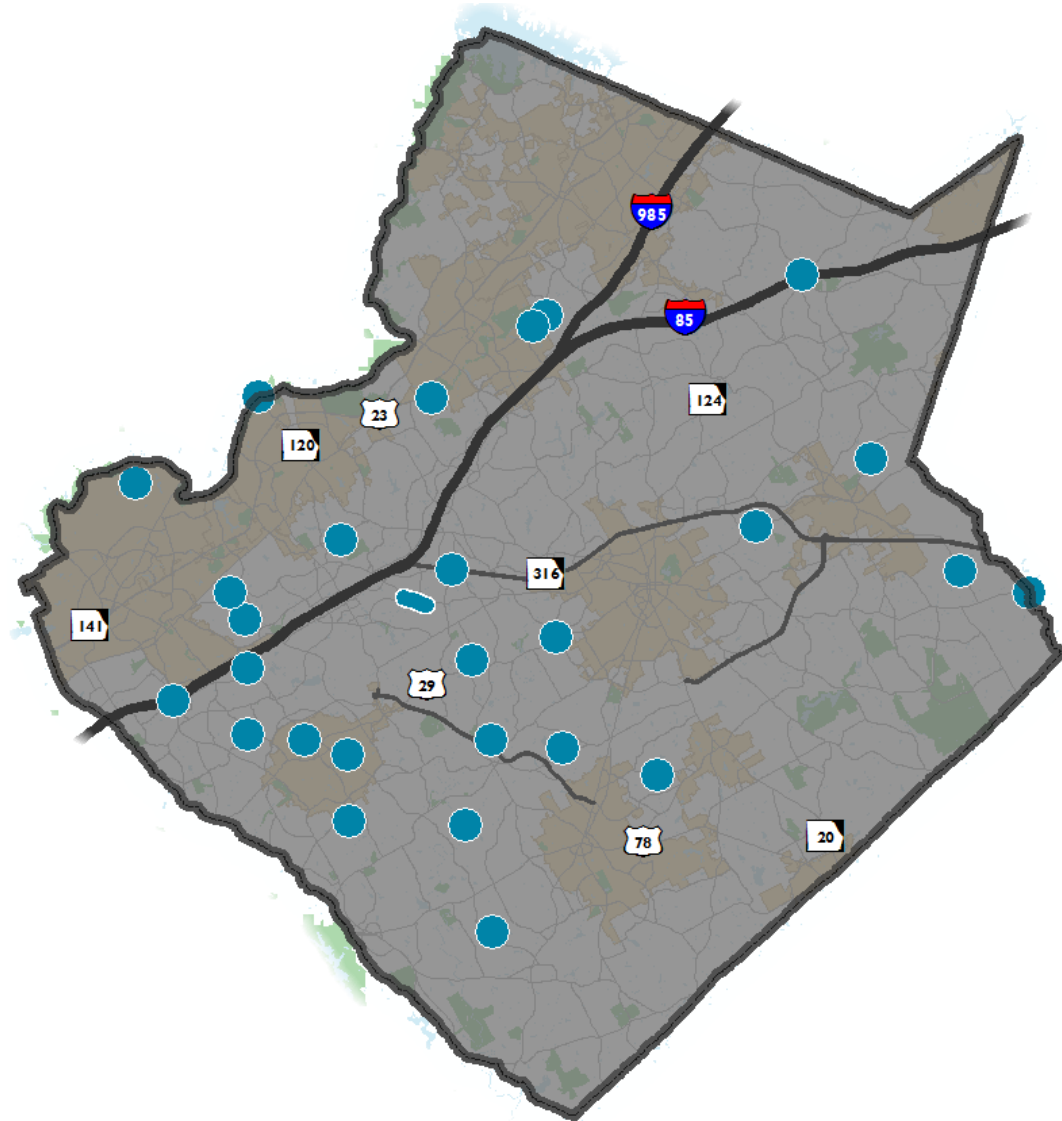
Gwinnett's Comprehensive Transportation Plan

## Bridge Maintenance

 Bridge Maintenance Projects

Roadway resurfacing  
set-aside:

*\$114 Million for 6-year SPLOST*



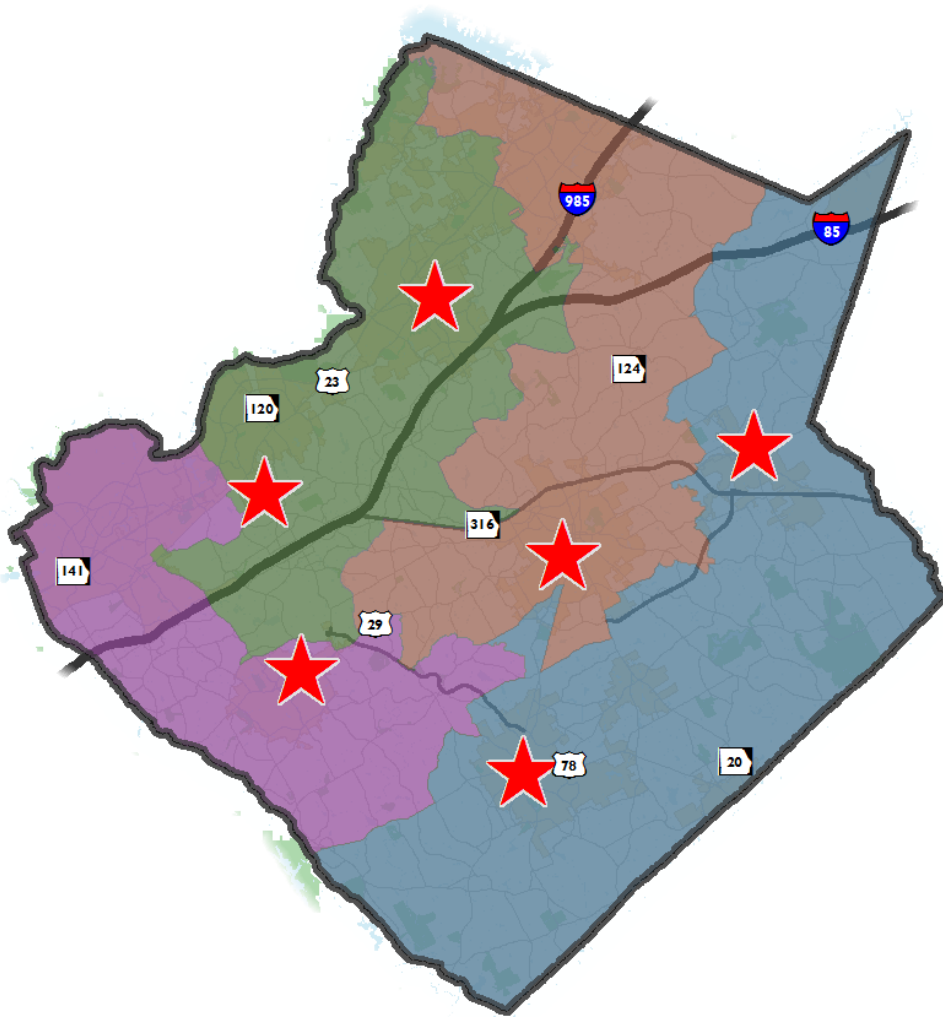


# Destination2040

Gwinnett's Comprehensive Transportation Plan

## WHERE WE GO FROM HERE

# Public Meetings



## Public Meetings:

- February 27, 2017 – 5:30pm to 7:30pm  
*Lilburn City Hall (Community Room)*
- March 2, 2017 – 5:30pm to 7:30pm  
*Snellville City Hall (Community Room)*
- March 6, 2017 – 5:30pm to 7:30pm  
*Gwinnett Justice & Administration Center (Conference Room C)*
- March 16, 2017 – 5:30pm to 7:30pm  
*Dacula Park (Community Room)*
- March 18, 2017 – 10:00am to noon  
*Shorty Howell Park (Activity Building)*
- March 20, 2017 – 5:30pm to 7:30pm  
*George Pierce Park (Community Room)*

# MetroQuest Survey

Destination2040

Gwinnett's Comprehensive Transportation Plan

## Welcome

WELCOME

### Gwinnett County Comprehensive Transportation Plan

Thanks for taking our second survey, which focuses on recommendations whereas the first survey focused on needs. Please take a moment to tell us what you think and what's important to you!



Begin

Destination2040

Gwinnett's Comprehensive Transportation Plan

We all use the transportation system differently! It influences how we move; how goods/services reach us; how we access our jobs, schools, and activities; how communities look; and how we interact with others.



2

BUDGET ALLOCATION

3

GWINNETT TRAILS

4

MAJOR INVESTMENTS

5

STAY INVOLVED



# Next Steps

- Feedback from the public
- Complete short range SPLOST program with CPSC
- Develop long range funding program
- Constrain long range projects into tiers
- Develop policies
- Public review and 30-day comment period

NEXT STEPS...

---

# Destination2040

Gwinnett's Comprehensive Transportation Plan