

Destination2040

Gwinnett's Comprehensive Transportation Plan

gwinnettcounty

Existing Conditions and Needs Public Meeting

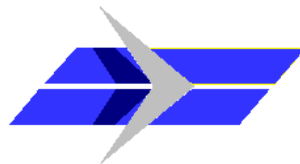
March and April, 2016

- Introductions
- Gwinnett County DOT Mission and Responsibilities
- Introduction to Gwinnett Comprehensive Transportation Plan (CTP) update – Destination2040
- Public Involvement Opportunities
- Draft Vision and Goals
- Existing Conditions and Trends
- Next Steps

Mission

The mission of the Gwinnett County Department of Transportation is to enhance quality of life by facilitating the ***mobility*** of people and goods ***safely*** and ***efficiently***.

Responsibilities



Operations, Maintenance, and Traffic

- Operations and Maintenance
- Traffic Engineering and Planning



Operations, Maintenance, and Traffic

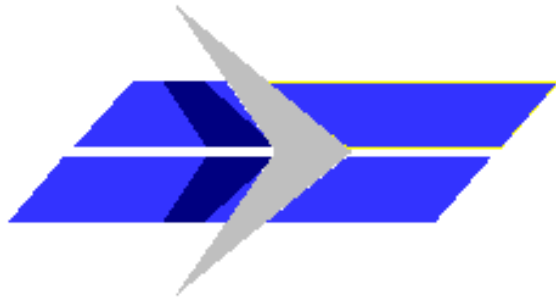
- Operations and Maintenance
- Traffic Engineering and Planning



Operations, Maintenance and Traffic

- **2,500** centerline miles of roadway
- **180** bridges and bridge culverts
- **20,000** traffic control signs
- **2,000** miles of sidewalk
- **700** traffic signals
- **225** miles of fiber optic cable
- **225** Closed Circuit Television cameras
- **200** traffic control flasher/beacon locations

Aviation



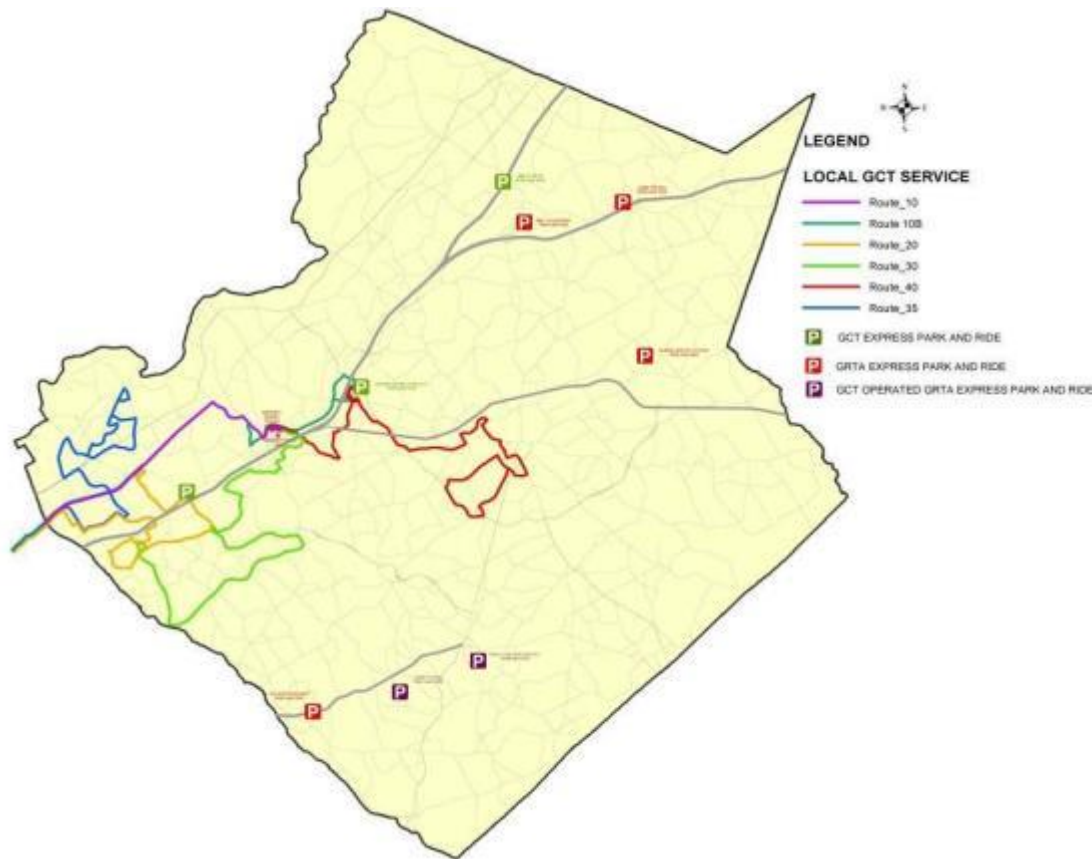
75,000 airport operations in 2015

Areas/Divisions

Destination2040

Gwinnett's Comprehensive Transportation Plan

Gwinnett County Transit



1.5 million boardings in 2015

Federal & State Grants

Fare Box Revenue



Gwinnett County Transit



GWINNETT COUNTY TRANSIT

- **2015 Budget Implementation**

- Restored Saturday service to all local routes
- Added 2 new departure times on the Express Route 102/Indian Trail Road Park and Ride Lot (am peak)

- **2016 – 2018 Transit Service Enhancements**

- Additional express service
- Additional local and complementary paratransit service
- New flex service

Areas/Divisions

Destination2040

Gwinnett's Comprehensive Transportation Plan

Program Delivery

- Preconstruction
- Construction



Program Delivery

2014 SPLOST Category	Tier I	Tier II
Bridges, Culverts & Transportation Drainage	\$30 million	--
Capital Projects Rehabilitation & Resurfacing	\$30 million	\$2.6 million
Intersections	\$33 million	\$10 million
Major Roads	\$47.6 million	\$7.4 million
Residential Speed Control	\$500,000	--
Road Safety and Alignment	\$15 million	--
School Safety	\$15 million	--
Sidewalks and Pedestrian Safety	\$27 million	\$5 million
Transportation Planning	\$1.3 million	--
Unpaved Roads	\$700,000	--
TOTALS	\$200.1 million	\$25 million
County / City Joint Projects	\$25 million	

Destination2040

Gwinnett's Comprehensive Transportation Plan

Introduction to Gwinnett CTP update

Destination2040

Gwinnett's Comprehensive Transportation Plan



Destination2040
Gwinnett's Comprehensive Transportation Plan



Transportation Modes



...and Other Considerations



Why it's Important

- Understanding of Community Vision
- Improvement to Quality of Life
- Access to State and Federal Funds
- Responsible Use of Taxpayer Dollars

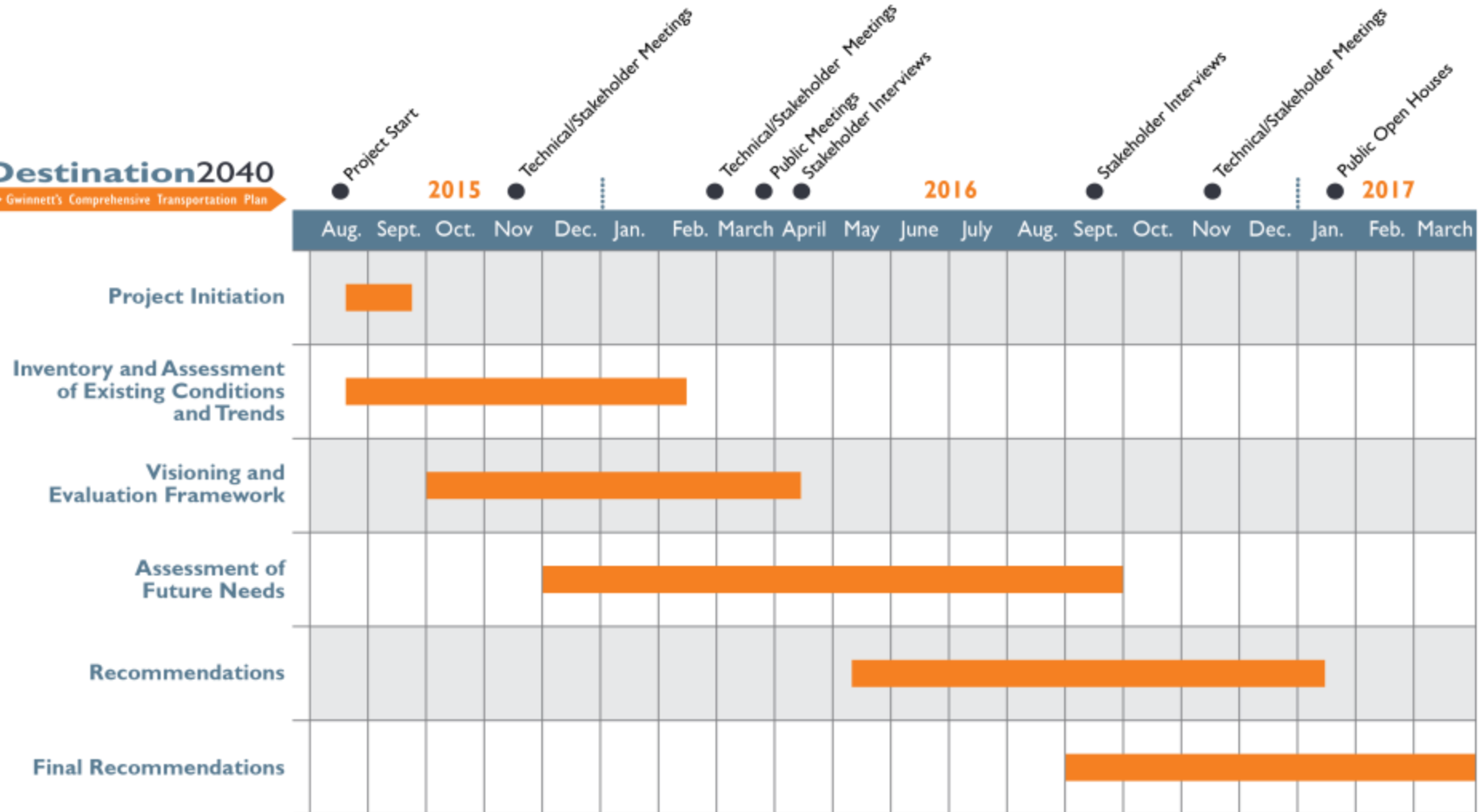
Schedule Overview

Destination2040

Gwinnett's Comprehensive Transportation Plan

Destination2040

Gwinnett's Comprehensive Transportation Plan



Upcoming Public Involvement

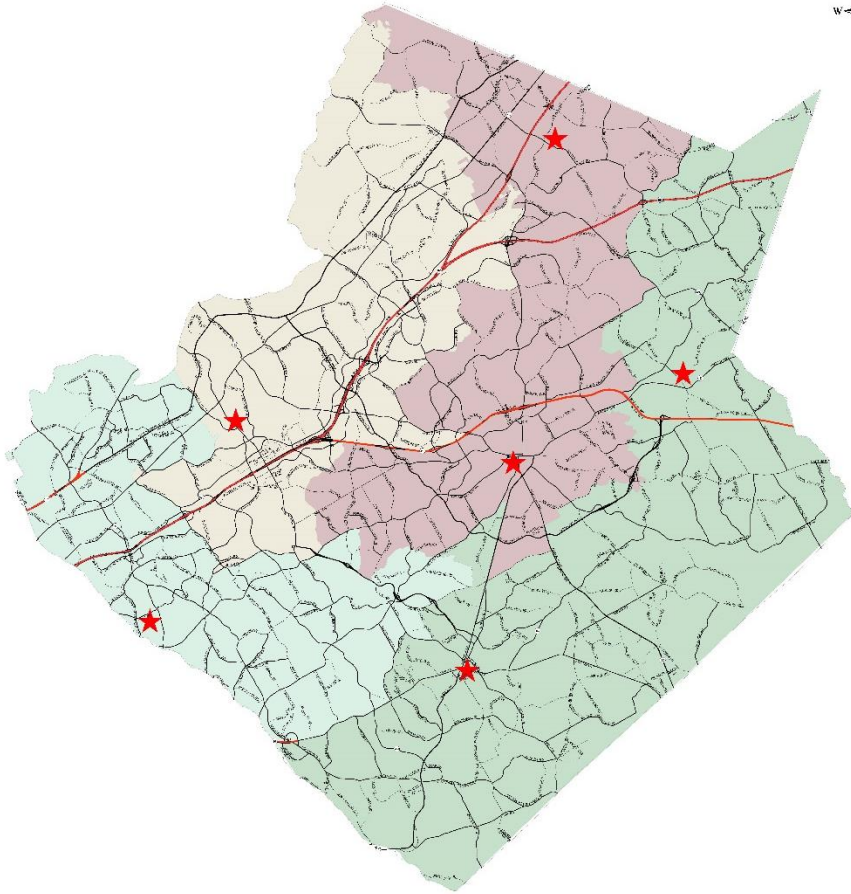
Destination2040

Gwinnett's Comprehensive Transportation Plan

- Website, email, and Facebook – throughout the process
- 6 Public Meetings – March and April
- MetroQuest Survey – March through May
- Statistically Valid Public Opinion Poll – Spring
- Stakeholder Interviews – April through June
- Community Events – throughout the process



Public Meetings



Public Meetings

- March 15, 2016 – Bogan Park Community Recreation Center – 6:00pm to 8:00pm
- March 19, 2016 (Saturday) – Shorty Howell Activity Building – 10:00am to 12:00pm
- March 21, 2016 – Lucky Shoals Park Community Room – 6:00pm to 8:00pm
- March 29, 2016 – Snellville City Hall Community Room – 6:00pm to 8:00pm
- April 18, 2016 – Dacula Park Activity Building – 6:00pm to 8:00pm
- April 21, 2016 – Gwinnett Planning and Development One Justice Square – 6:00pm to 8:00pm

MetroQuest Online Survey

Destination2040

Gwinnett's Comprehensive Transportation Plan

Gwinnett County Comprehensive Transportation Plan

Progress



Welcome

WELCOME

Gwinnett County Comprehensive Transportation Plan

Gwinnett County invites you to help update its Comprehensive Transportation Plan (CTP), using a community-driven process. The updated plan will summarize current and future multimodal transportation needs within the County and will recommend projects for the next five years and 25 years.



Begin

2
PRIORITY RANKING

3
SURVEY

4
MAP IT!

5
STAY INVOLVED!



This is just the beginning... This survey is one of many steps to get your feedback, so there will be more opportunities to participate. Your input now will help us prioritize needs across the County as the plan develops.

Draft Vision and Goals

Destination2040

Gwinnett's Comprehensive Transportation Plan



Draft Vision and Goals



STATEWIDE STRATEGIC TRANSPORTATION PLAN GOALS

- Supporting Georgia's economic growth and competitiveness
- Ensuring safety and security
- Maximizing the value of Georgia's assets, getting the most out of the existing network
- Minimizing impact on the environment



MAP-21 GOALS

- Safety
- Infrastructure Condition
- Congestion Reduction
- System Reliability
- Freight Movement and Economic Vitality
- Environmental Sustainability
- Reduced Project Delivery Delays

Key Topics Discussed by Stakeholders

- Connectivity (within Gwinnett and regionally)
- Education about transportation
- Multimodal options
- Prioritizing funding and maximizing available resources
- Quality of life
- Safety
- Technology

Vision

The Gwinnett County Comprehensive Transportation Plan will provide a framework to improve quality of life for everyone in the County by facilitating the mobility of people and goods safely and efficiently across all modes of transportation. This framework will be established through the following short and long term goals:

Goals

- Improve ***safety and mobility*** for all people across all modes of travel
- Continue to serve as ***responsible stewards*** of transportation resources
- Leverage the County's transportation system to improve ***economic vitality*** and ***quality of life***
- Improve ***connectivity***
- Proactively ***embrace future*** transportation ***opportunities***

Draft Vision and Goals

- Provide edits to the draft Vision and Goals
- Write in a new goal if something big is missing
- Rank your goals in order from 1 to 5 (or 1 to 6)
- Provide your handout to the facilitators before you leave

Vision and Goals Ranking Exercise

The Gwinnett County Comprehensive Transportation Plan will provide a framework to improve the quality of life for everyone in the County by facilitating the mobility of people and goods safely and efficiently across all modes of transportation. This framework will be established through the following short- and long-term goals.

Please rank the goals below with a number between 1 and 5 (or 1 through 6 if you add a goal). Also, feel free to mark-up the sub-goals with any changes you think are necessary.

Goal	Rank
Improve safety and mobility for all people across all modes of travel <ul style="list-style-type: none">• Prioritize projects and programs that improve safety, acknowledging all users in project design• Continue to evaluate innovative design as well as improved technologies and products for use in the County's transportation network• Consider mobility needs of all population groups when investing in the transportation system	
Continue to serve as responsible stewards of transportation resources <ul style="list-style-type: none">• Invest in rehabilitation and maintenance of existing transportation infrastructure• Prioritize projects that maximize the benefit of taxpayer dollars and alternate funding sources	
Leverage the County's transportation system to improve economic vitality and quality of life <ul style="list-style-type: none">• Connect people to jobs and educational opportunities through coordinated transportation and land use investment decisions• Use transportation investments to encourage development/redevelopment in strategic locations throughout the County• Facilitate the efficient movement of goods• Preserve community livability and attractiveness; respect and value existing community open spaces and prioritize transportation projects that positively impact the human and natural environment	
Improve connectivity <ul style="list-style-type: none">• Improve overall connectivity within Gwinnett County by tying activity centers to each other and by enhancing cross-county movements• Improve connectivity between Gwinnett County and the rest of the region• Improve connectivity and reliability regardless of mode or purpose	
Proactively embrace future transportation opportunities <ul style="list-style-type: none">• Anticipate and plan for technological advances in transportation• Educate the community about transportation options, funding, and processes• Work with local, regional, state, and federal partners to plan future improvements• Integrate long range comprehensive transportation plan with other County planning efforts• Build additional capacity into transportation corridors, when feasible, to anticipate future needs	
Fill in your own goal!	

Information Collection

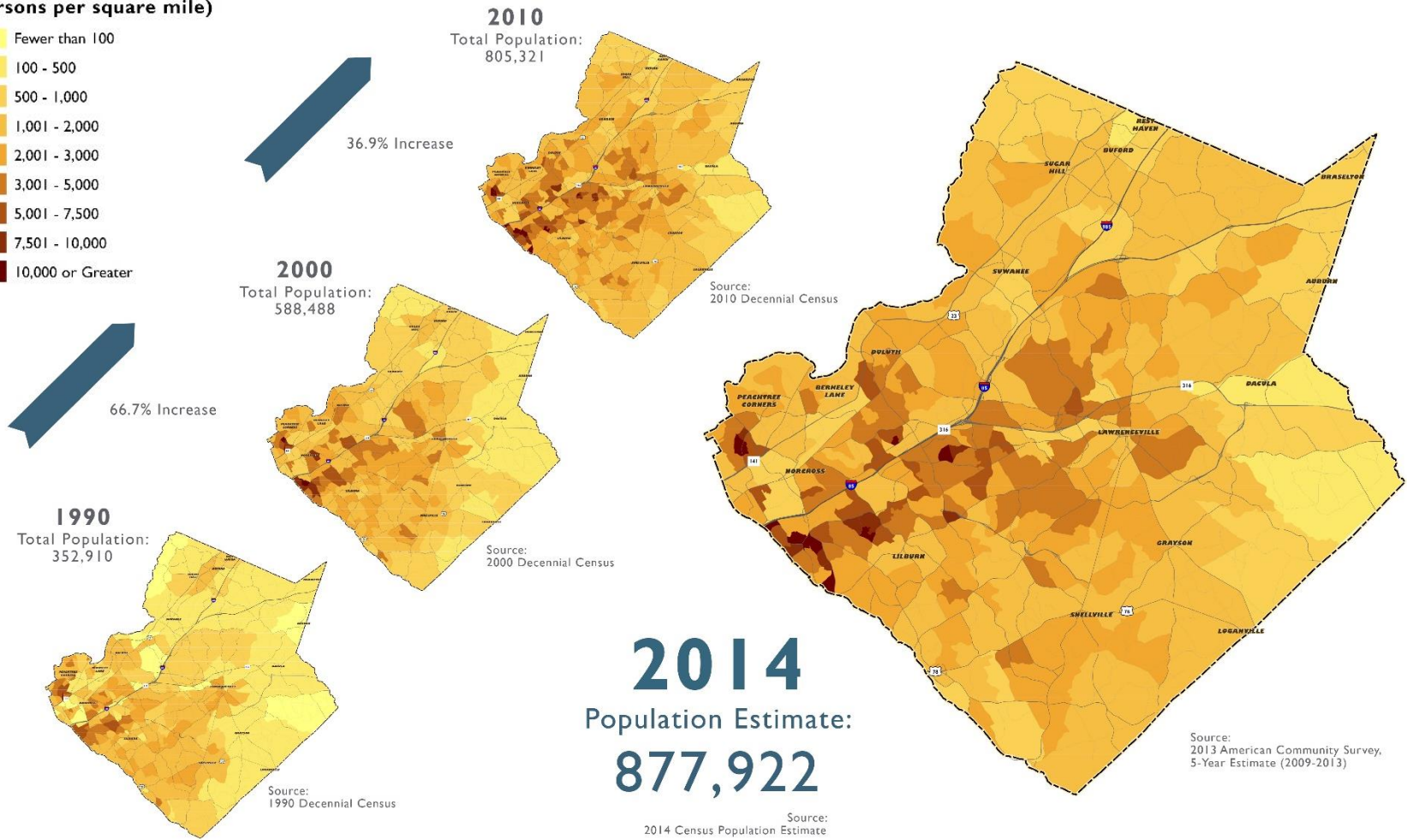
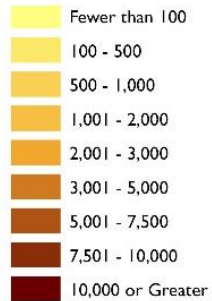
- Develop a baseline understanding of transportation conditions, needs, projects, and related areas of influence
- Conduct a robust inventory of facilities, services, and policies
- Existing roadway facility information
- Other transportation facilities
- Land use and environment characteristics

Existing Conditions and Trends

Destination2040

Gwinnett's Comprehensive Transportation Plan

Population Density (persons per square mile)

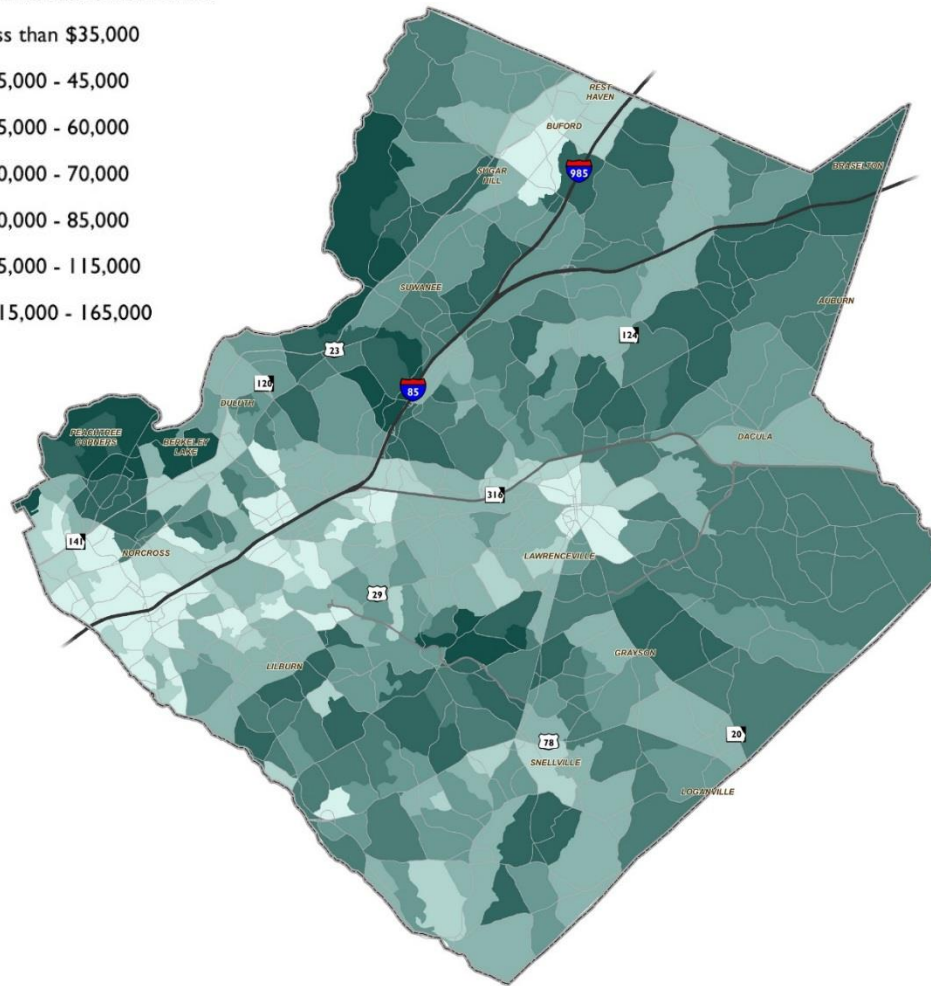


Existing Conditions and Trends

Destination2040

Gwinnett's Comprehensive Transportation Plan

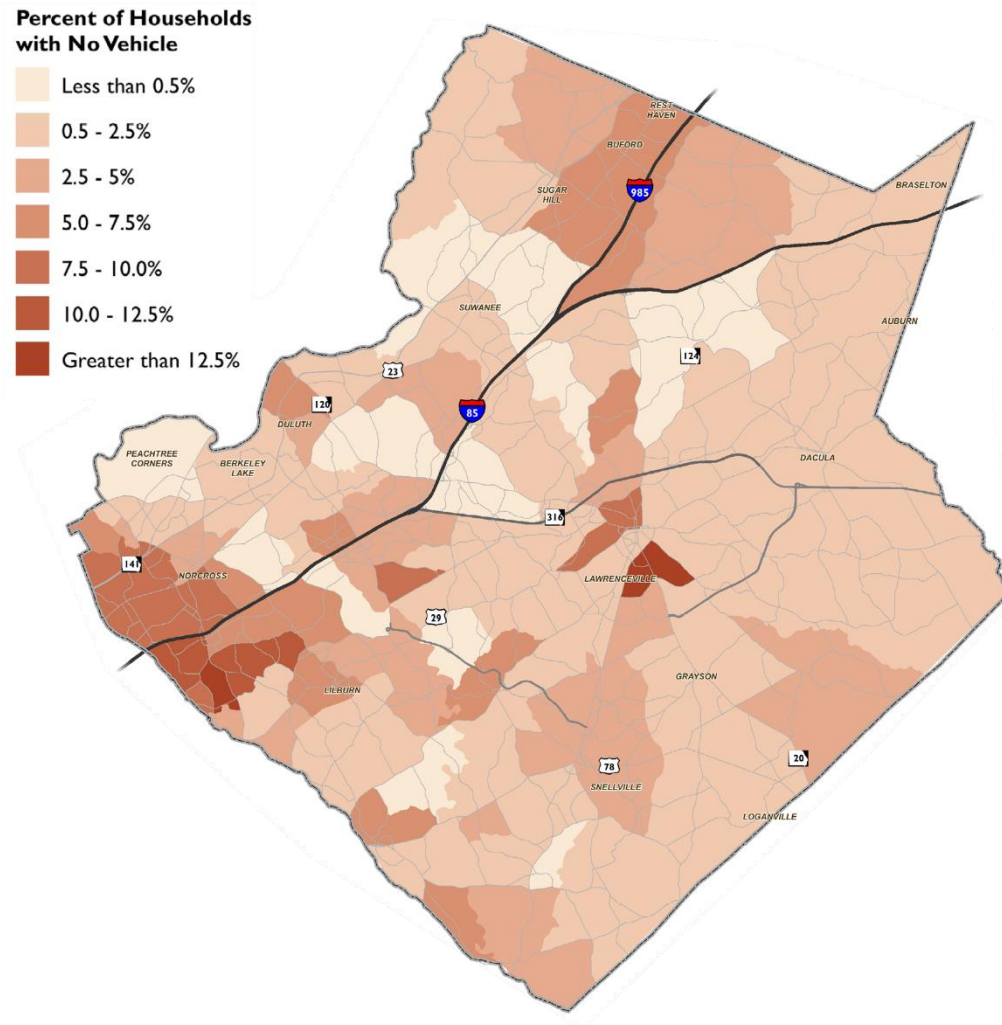
Median Household Income



Existing Conditions and Trends

Destination2040

Gwinnett's Comprehensive Transportation Plan



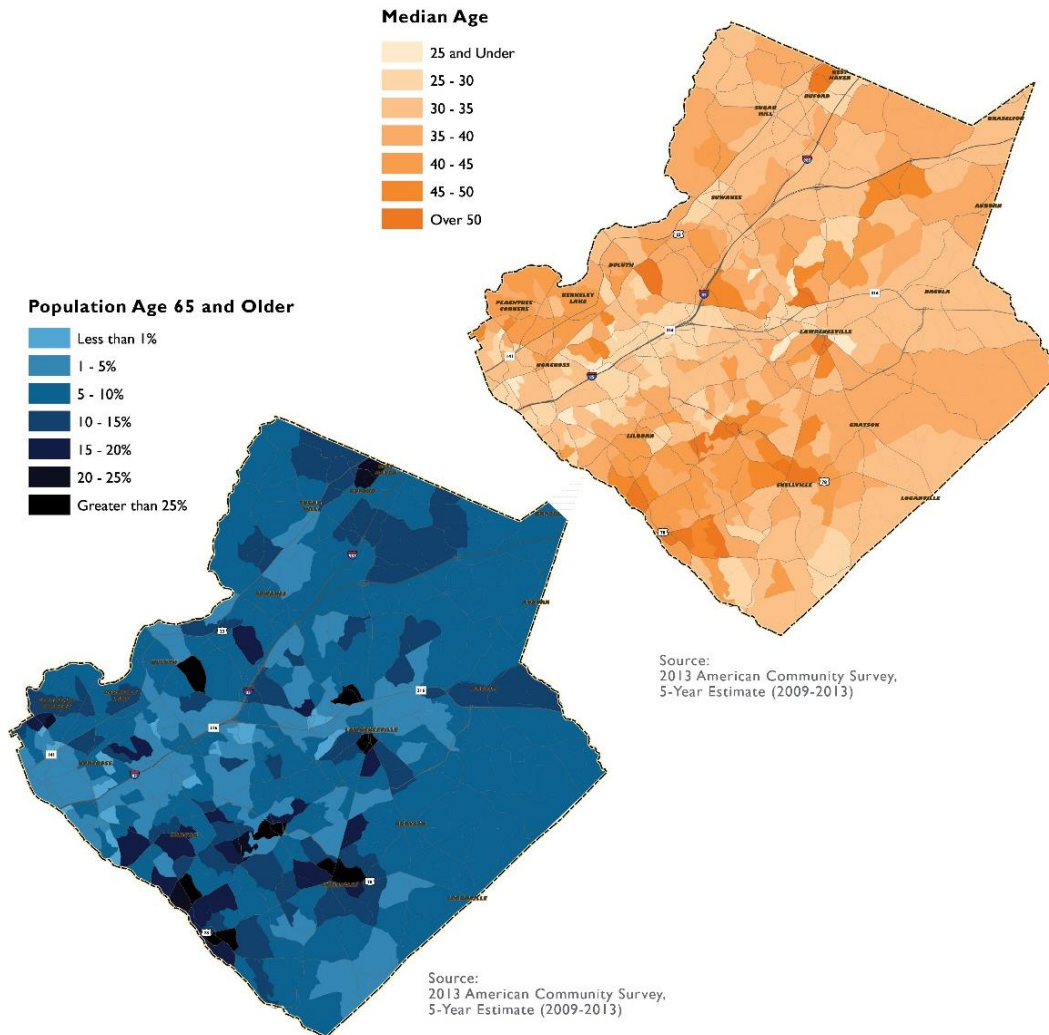
No Vehicle Household

Existing Conditions and Trends

Destination2040

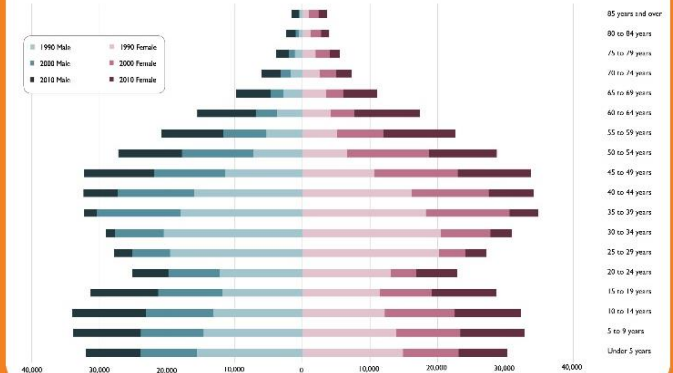
Gwinnett's Comprehensive Transportation Plan

AGE OF POPULATION

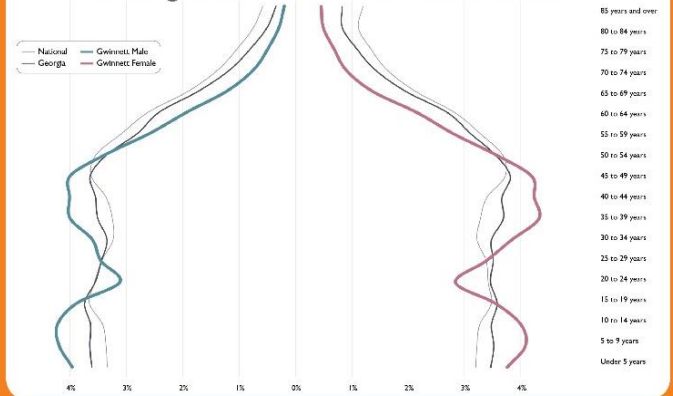


POPULATION BY AGE AND GENDER

Gwinnett County: 1990, 2000, 2010



Comparison to Georgia and National Distributions



Source: 1990, 2000, 2010 Decennial Census

Existing Conditions and Trends

Destination2040

Gwinnett's Comprehensive Transportation Plan

Percent of Households with Limited English Proficiency

Less than 1%

1 - 5%

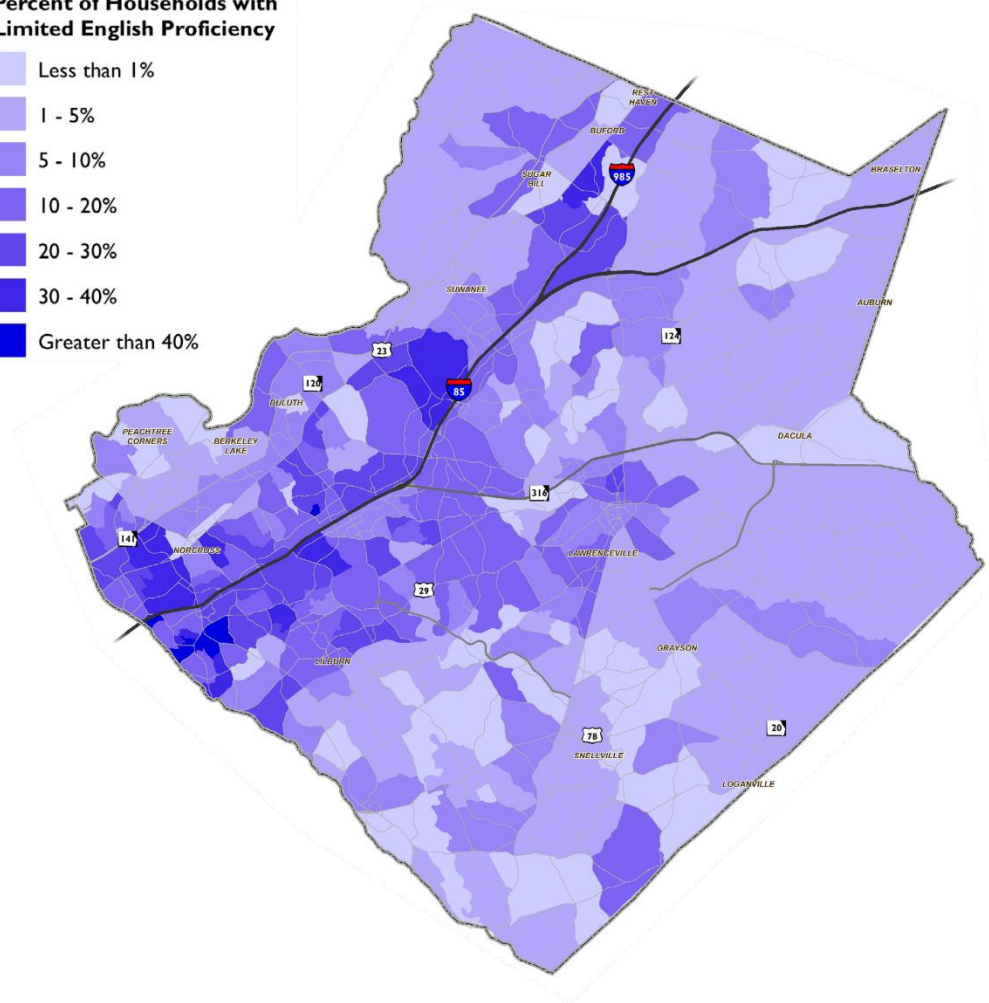
5 - 10%

10 - 20%

20 - 30%

30 - 40%

Greater than 40%



Limited English Proficiency

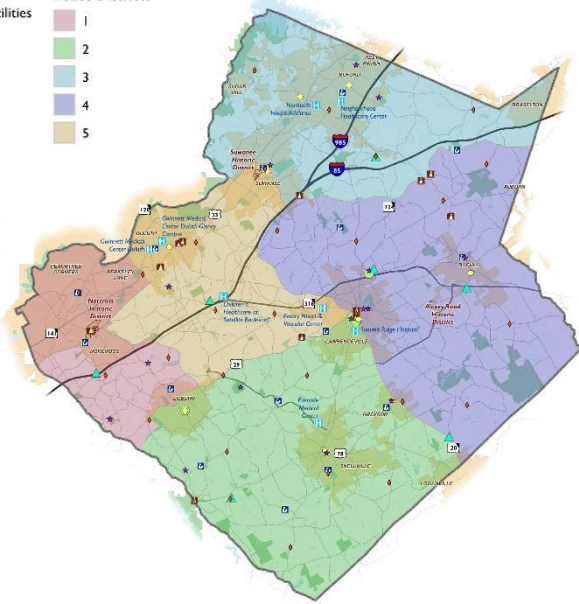
Existing Conditions and Trends

Destination2040

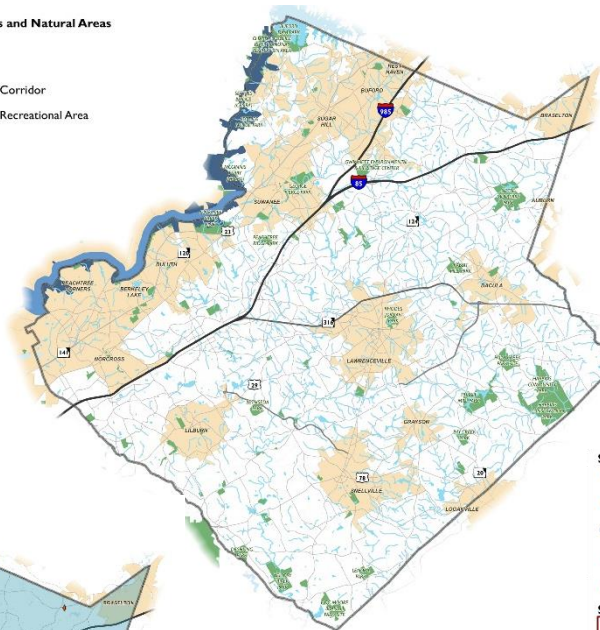
Gwinnett's Comprehensive Transportation Plan

Community Facilities

- Community Facilities**
- ★ Senior Citizen Facilities
 - H Hospitals
 - L Libraries
 - Fire Stations
 - City Halls
 - Courthouses
 - Police Precincts
 - Historic Markers
 - Historic Districts
- Police Districts**
- 1
 - 2
 - 3
 - 4
 - 5

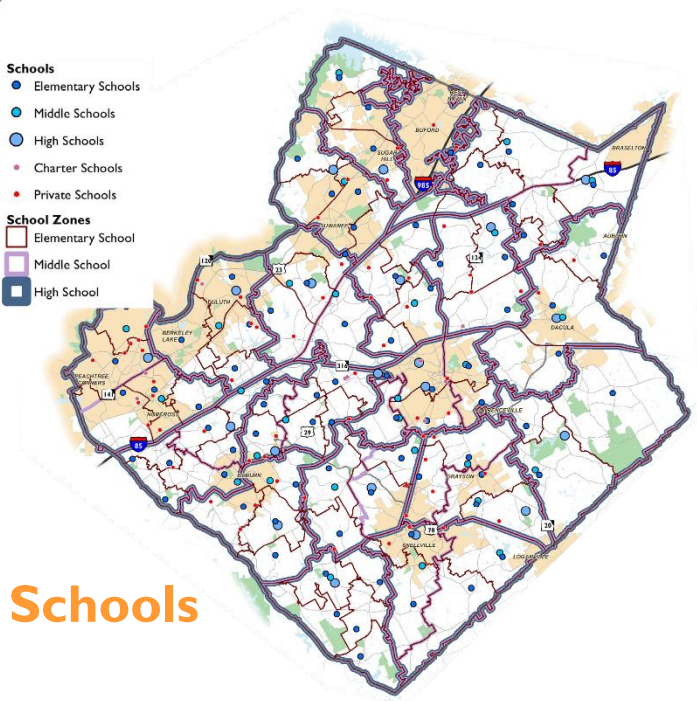


- Environmental Features and Natural Areas**
- Rivers and Streams
 - Lakes and Wetlands
 - Chattahoochee River Corridor
 - Chattahoochee River Recreational Area
 - Parks



Environmental Features

- Schools**
- Elementary Schools
 - Middle Schools
 - High Schools
 - Charter Schools
 - Private Schools
- School Zones**
- Elementary School
 - Middle School
 - High School



Schools

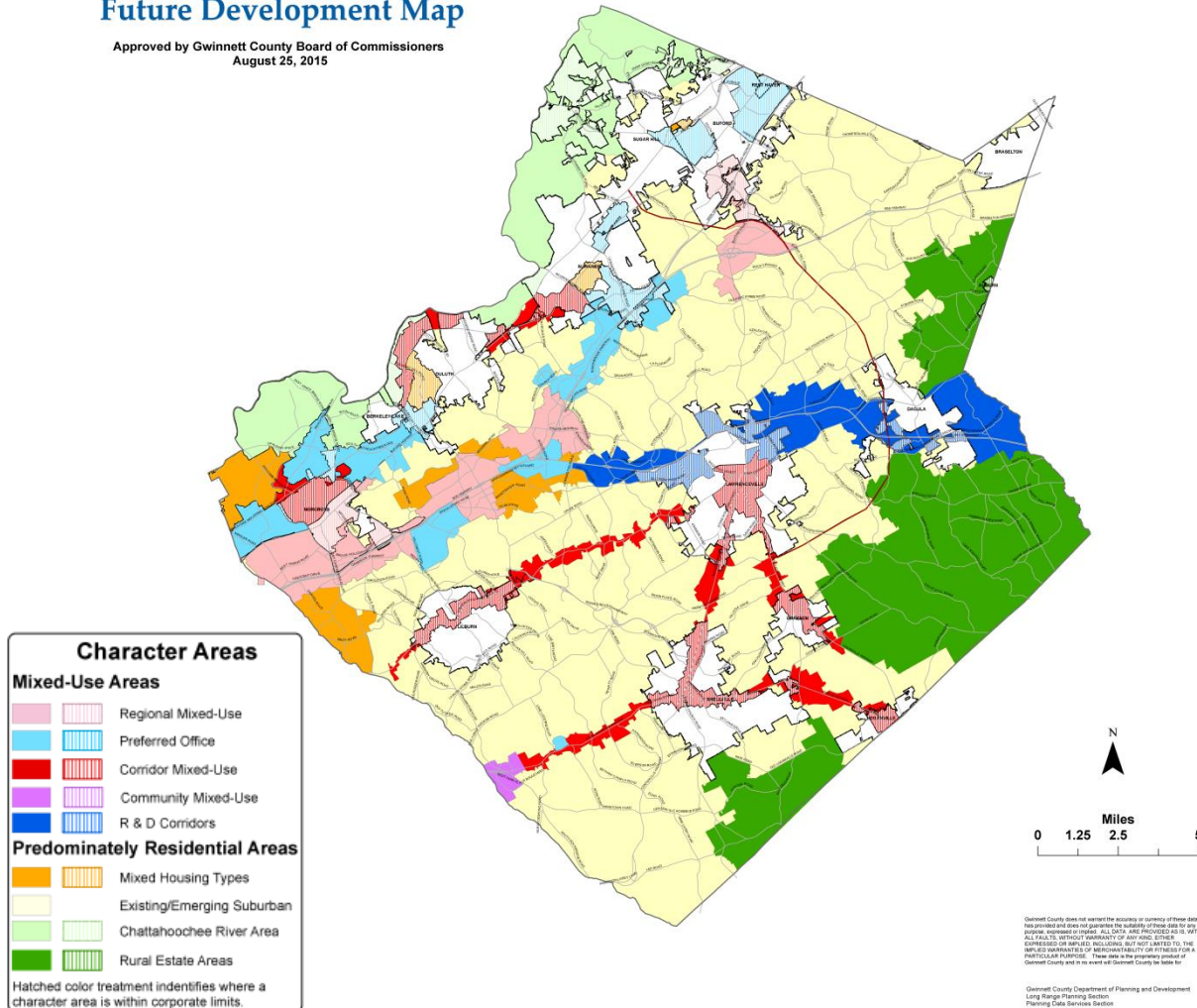
Existing Conditions and Trends

Destination2040

Gwinnett's Comprehensive Transportation Plan

Gwinnett County 2030 Unified Plan Future Development Map

Approved by Gwinnett County Board of Commissioners
August 25, 2015

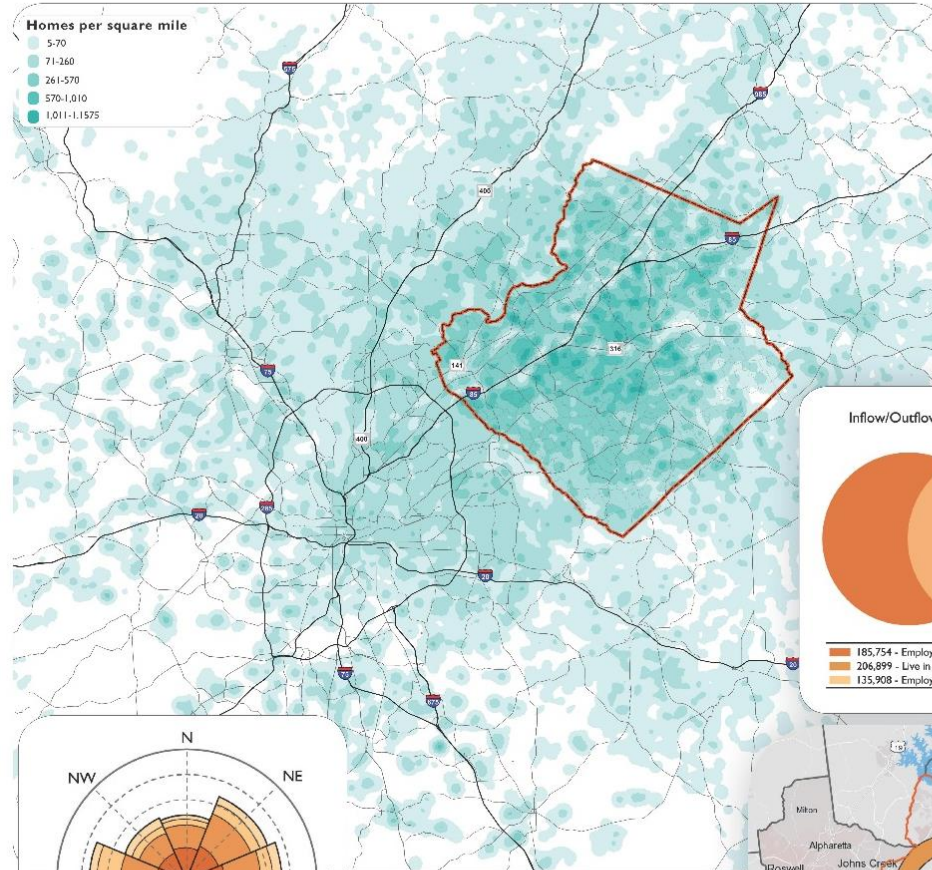


Existing Conditions and Trends

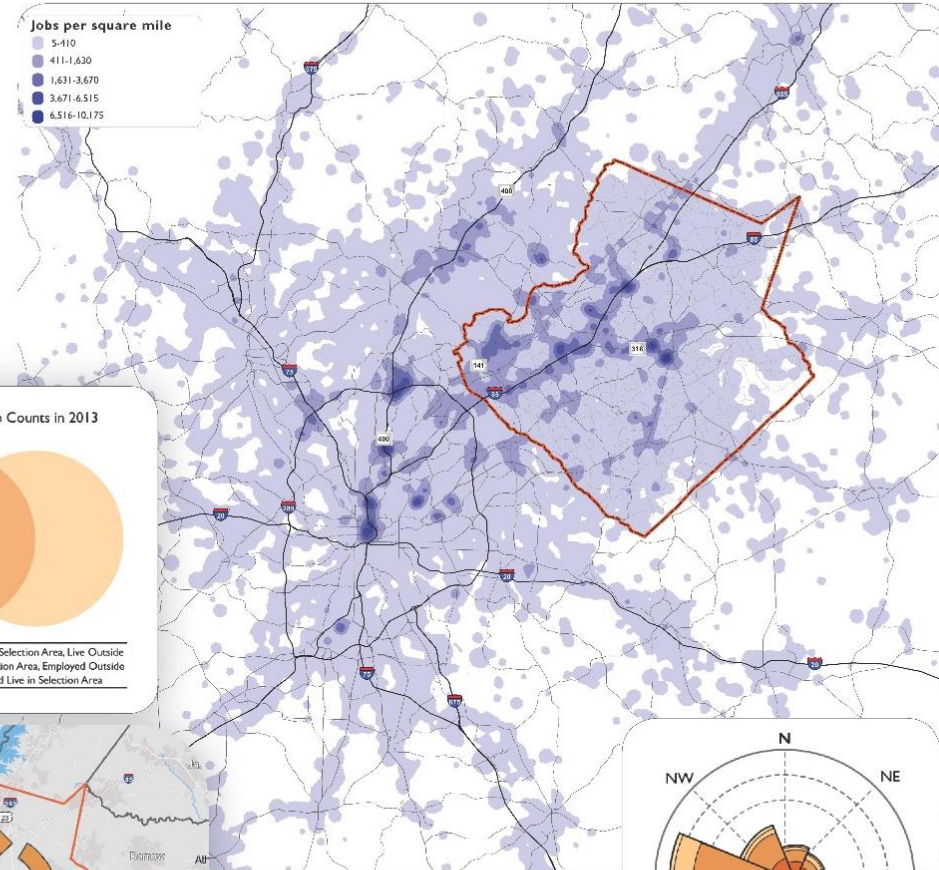
Destination2040

Gwinnett's Comprehensive Transportation Plan

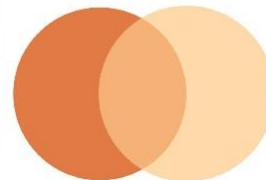
Where Gwinnett Workers Live



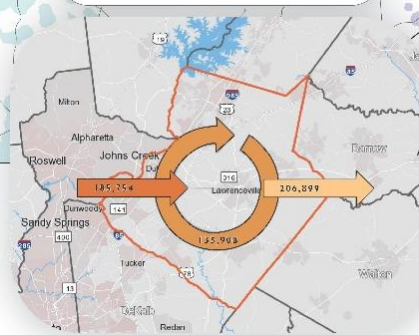
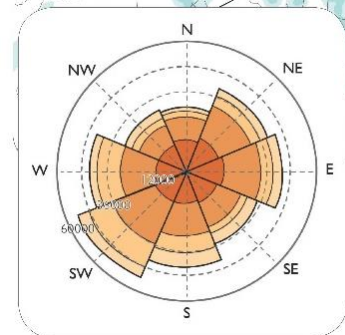
Where Gwinnett Residents Work



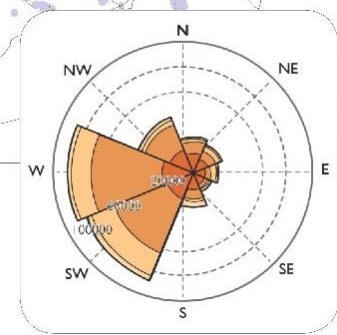
Inflow/Outflow Job Counts in 2013



185,754 - Employed in Selection Area, Live Outside
206,899 - Live in Selection Area, Employed Outside
135,908 - Employed and Live in Selection Area



Source:
OnTheMap - U.S. Census Bureau, Center
for Economic Studies
Data based on 2002-2013 Longitudinal
Employer-Household Dynamics (LEHD)
Origin-Destination Employment Statistics
(LODES)



Travel Patterns

Breakout #1: Roadway

Breakout I: Roadway

Destination2040

Gwinnett's Comprehensive Transportation Plan

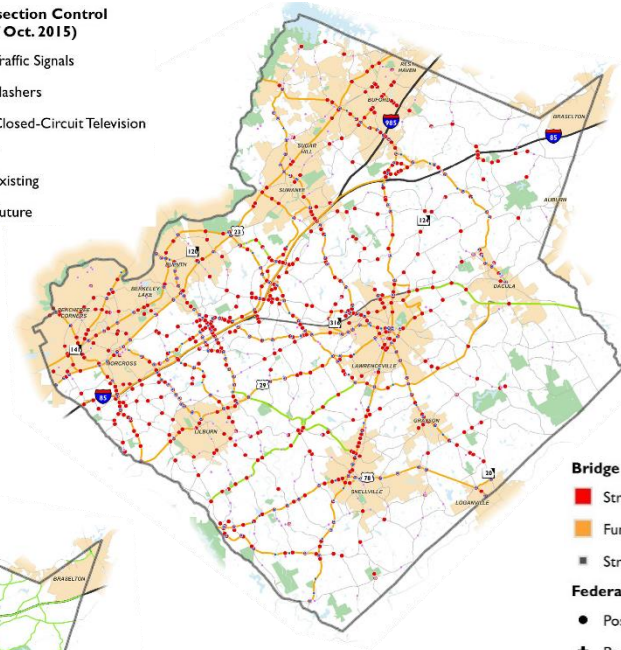
Intersection Control

Intersection Control (as of Oct. 2015)

- Traffic Signals
- Flashers
- Closed-Circuit Television

Fiber

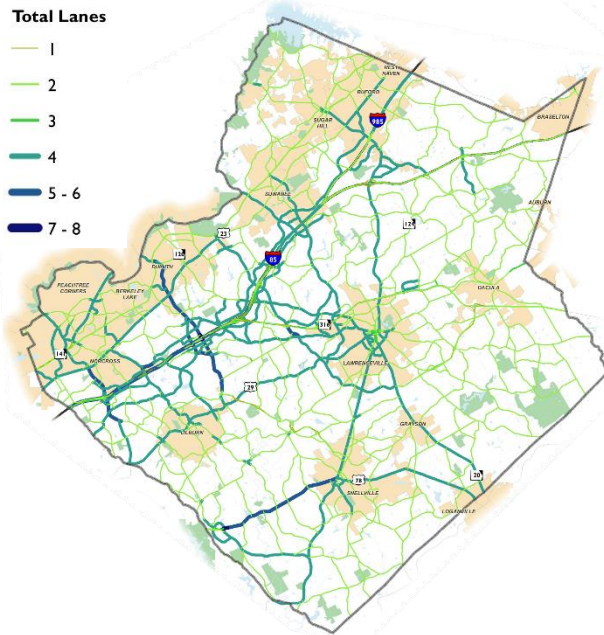
- Existing
- Future



Laneage

Total Lanes

- 1
- 2
- 3
- 4
- 5 - 6
- 7 - 8

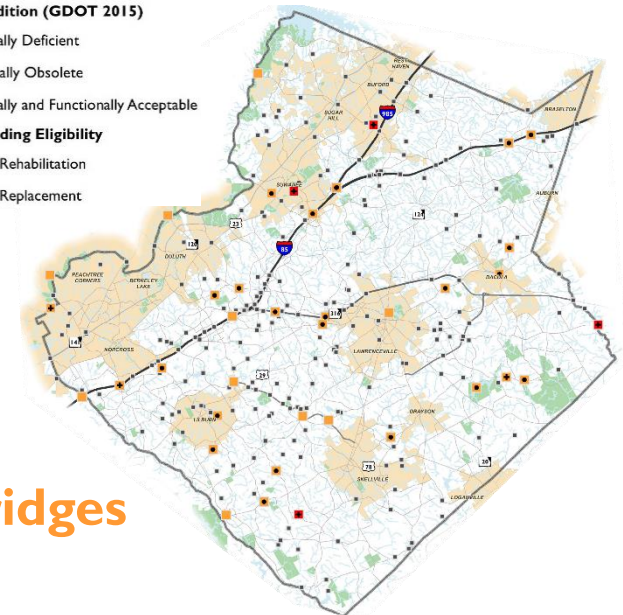


Bridge Condition (GDOT 2015)

- Structurally Deficient
- Functionally Obsolete
- Structurally and Functionally Acceptable

Federal Funding Eligibility

- Possible Rehabilitation
- ✚ Possible Replacement

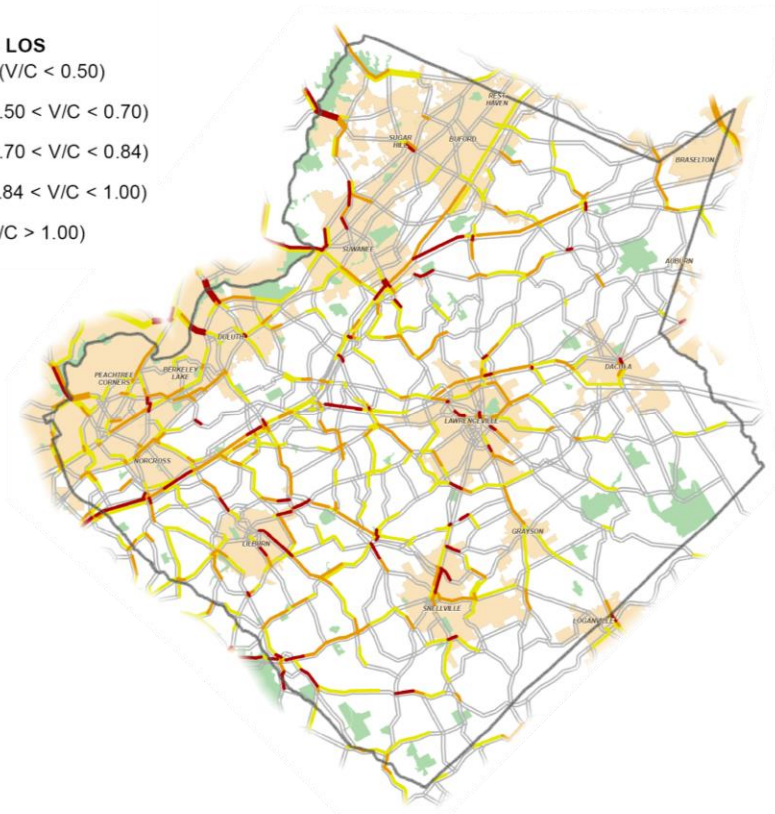


Bridges

Breakout I: Roadway

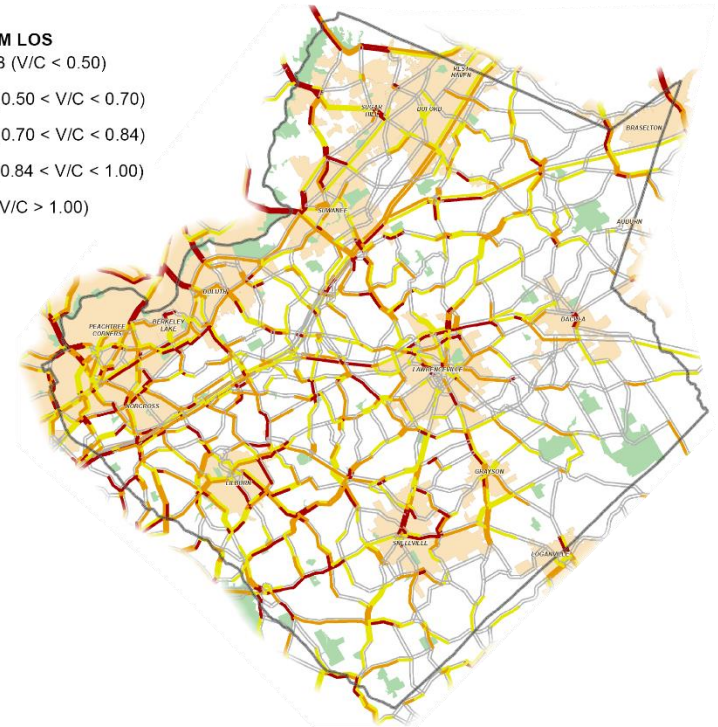
2015 AM LOS

- A/B ($V/C < 0.50$)
- C ($0.50 < V/C < 0.70$)
- D ($0.70 < V/C < 0.84$)
- E ($0.84 < V/C < 1.00$)
- F ($V/C > 1.00$)



2015 PM LOS

- A/B ($V/C < 0.50$)
- C ($0.50 < V/C < 0.70$)
- D ($0.70 < V/C < 0.84$)
- E ($0.84 < V/C < 1.00$)
- F ($V/C > 1.00$)

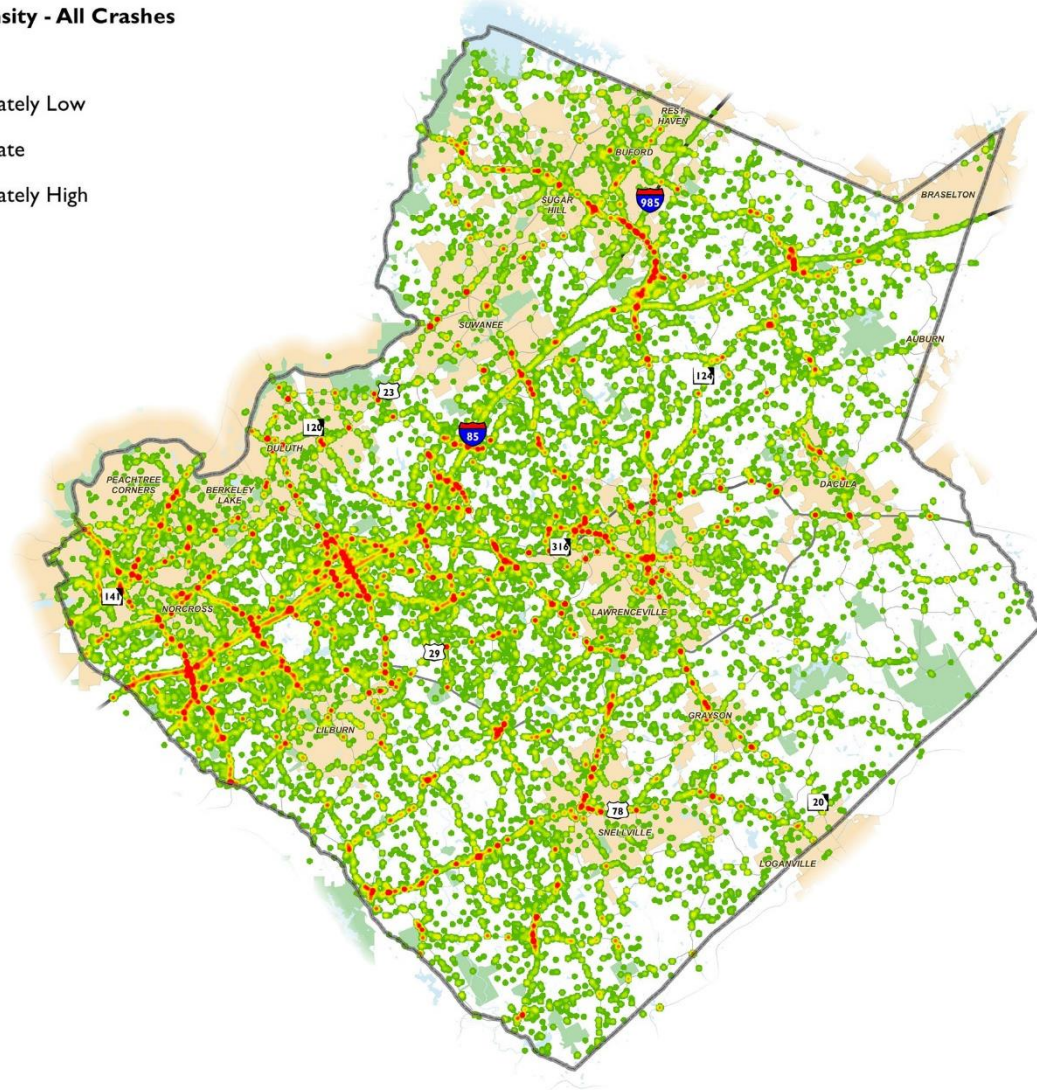
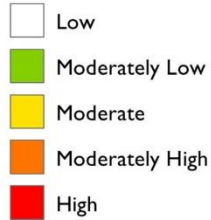


Breakout I: Roadway

Destination2040

Gwinnett's Comprehensive Transportation Plan

Crash Density - All Crashes



Breakout I: Roadway

Destination2040

Gwinnett's Comprehensive Transportation Plan

Freight, Rail, and Air Transportation Infrastructure

● Rail & Truck Intermodal Facility (NTAD 2015)

✈ General Aviation Airport

Ⓜ Heliport

— Gwinnett County Truck Routes

— Atlanta Strategic Truck Route Master Plan (ASTRoMaP)

— CSX Rail

— Norfolk Southern Rail



141 miles of truck routes

2 primary rail lines

28 rail lines and spurs

55 miles of rail lines

Freight and Air Infrastructure

Breakout #2: Transit

Breakout 2: Transit

TRANSIT






Park & Rides and Stops

-  Park and Rides
-  GCT Express Stops
-  GCT Local Stops
-  GRTA Stops

Bus Routes

-  GCT Local
-  GCT Express
-  GRTA Xpress

MARTA

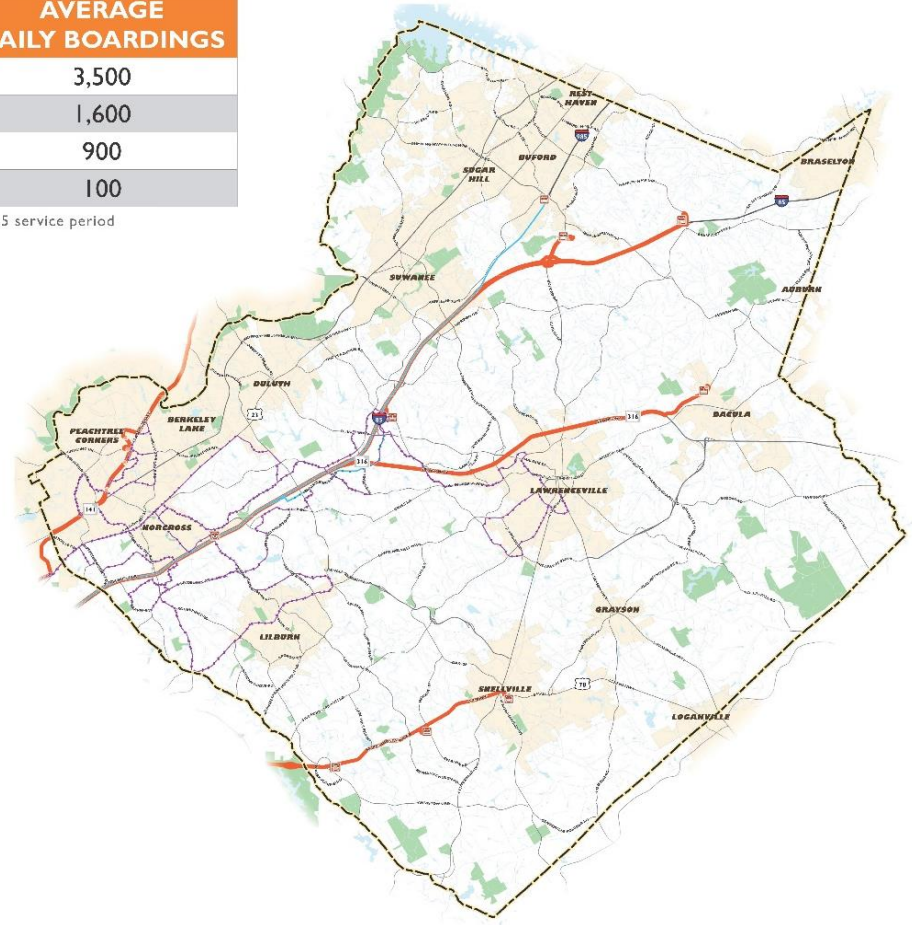
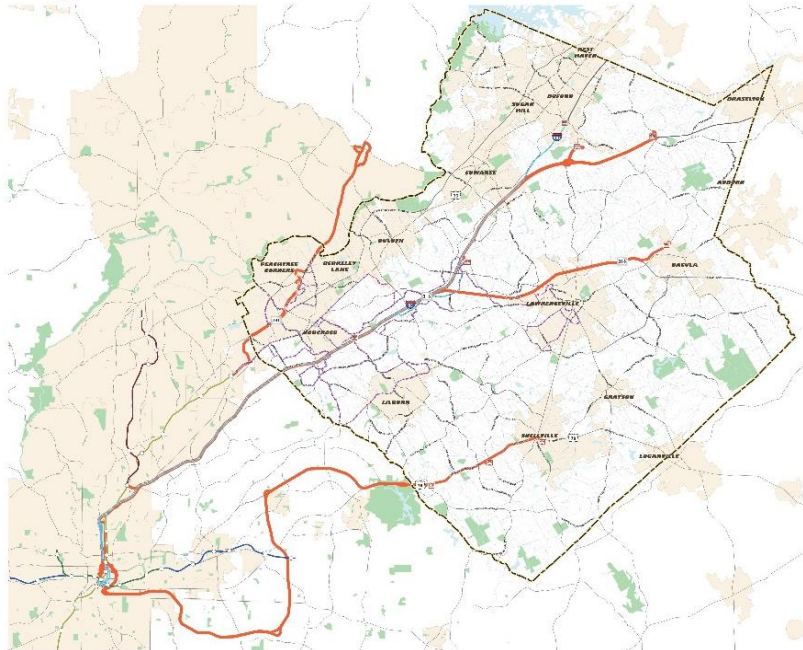
-  Rail Stations
-  Blue Line
-  Gold Line
-  Green Line
-  Red Line

Average Daily Boardings

SYSTEM	AVERAGE DAILY BOARDINGS
GCT Local	3,500
GCT Express	1,600
GRTA Xpress	900
Paratransit	100

Data from 01/2015 through 04/2015 service period

Regional Transit Connections




Breakout 2: Transit

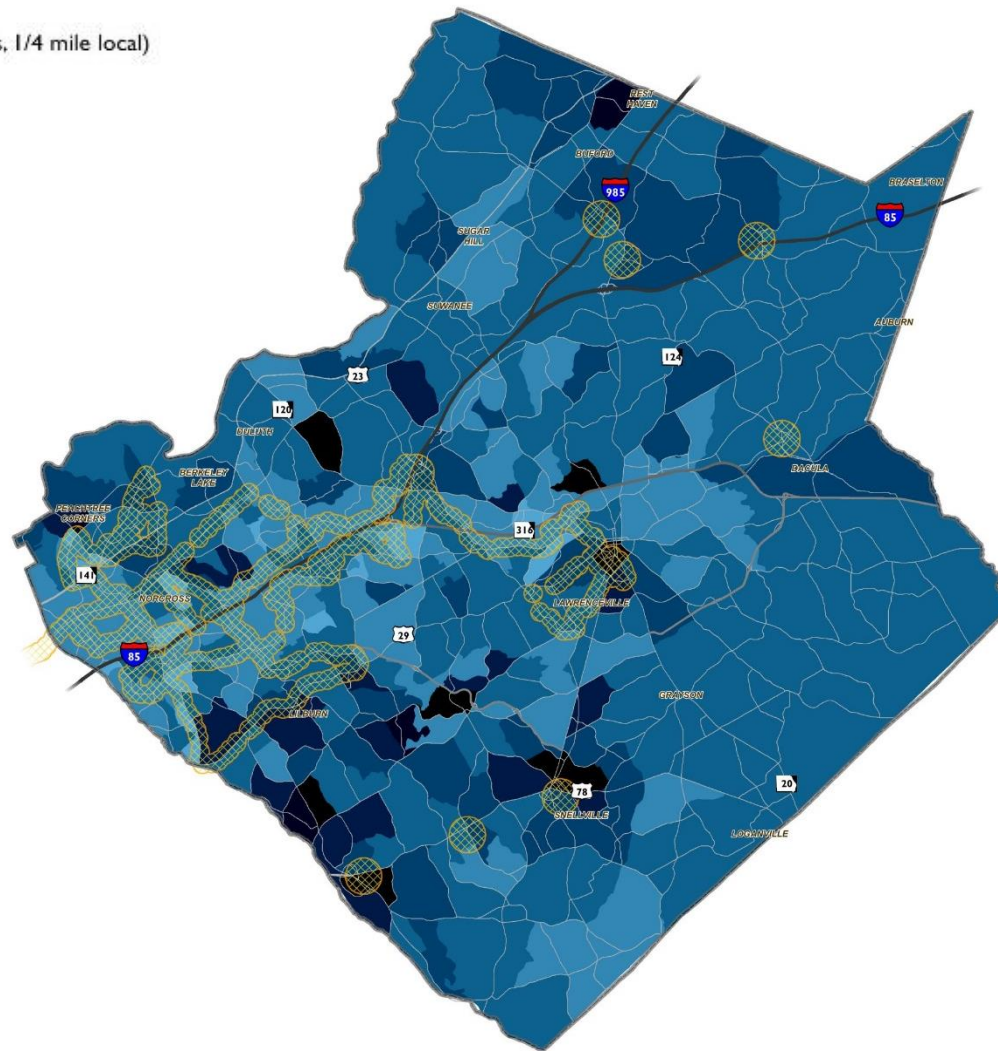
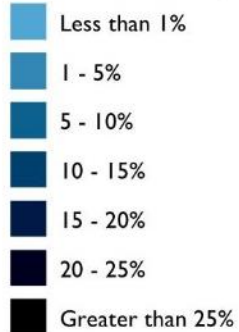
Destination2040

Gwinnett's Comprehensive Transportation Plan

Transit Coverage

 Transit Coverage (1/2 mile express, 1/4 mile local)


Population Age 65 and Older Percent of Total Population



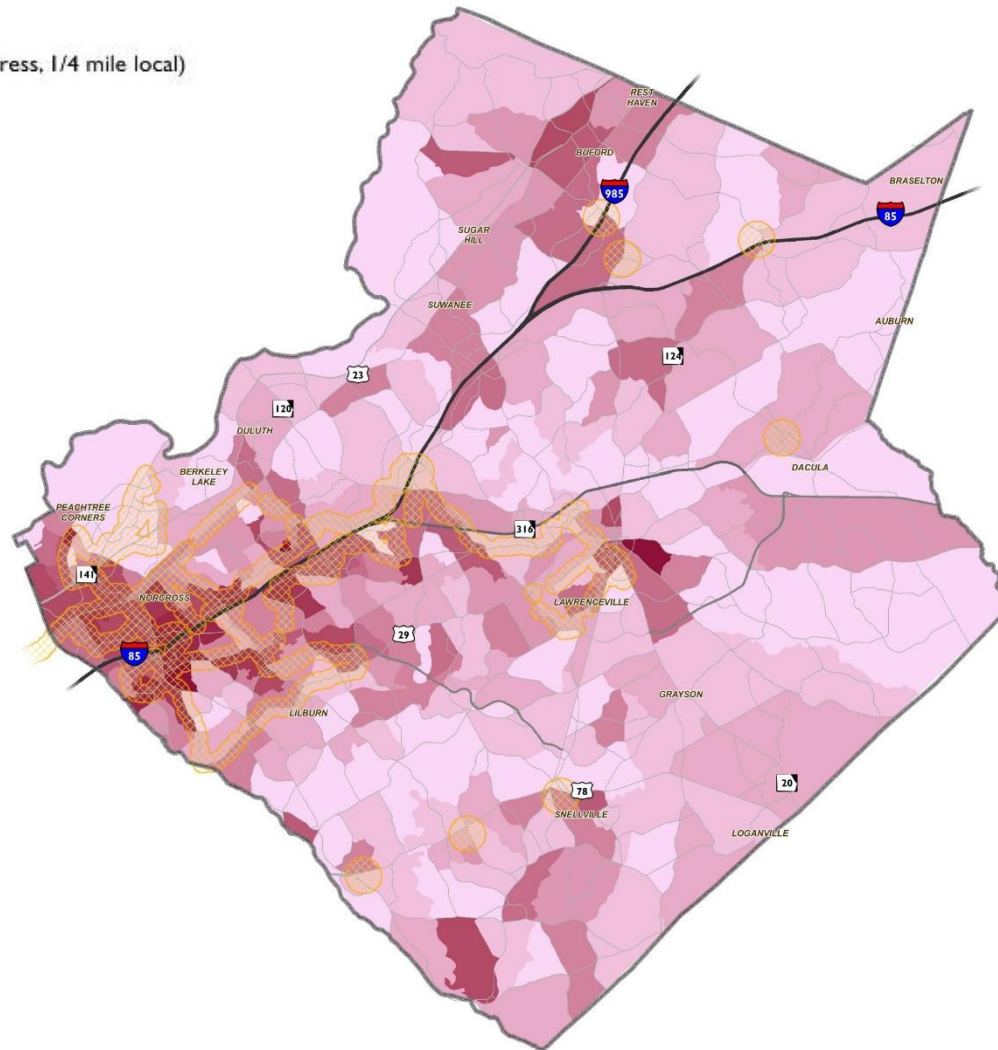
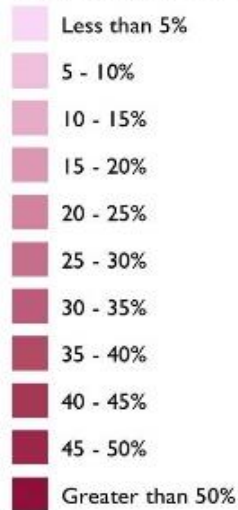
Transit Access and Age 65+

Breakout 2: Transit


Transit Coverage

 Transit Coverage (1/2 mile express, 1/4 mile local)

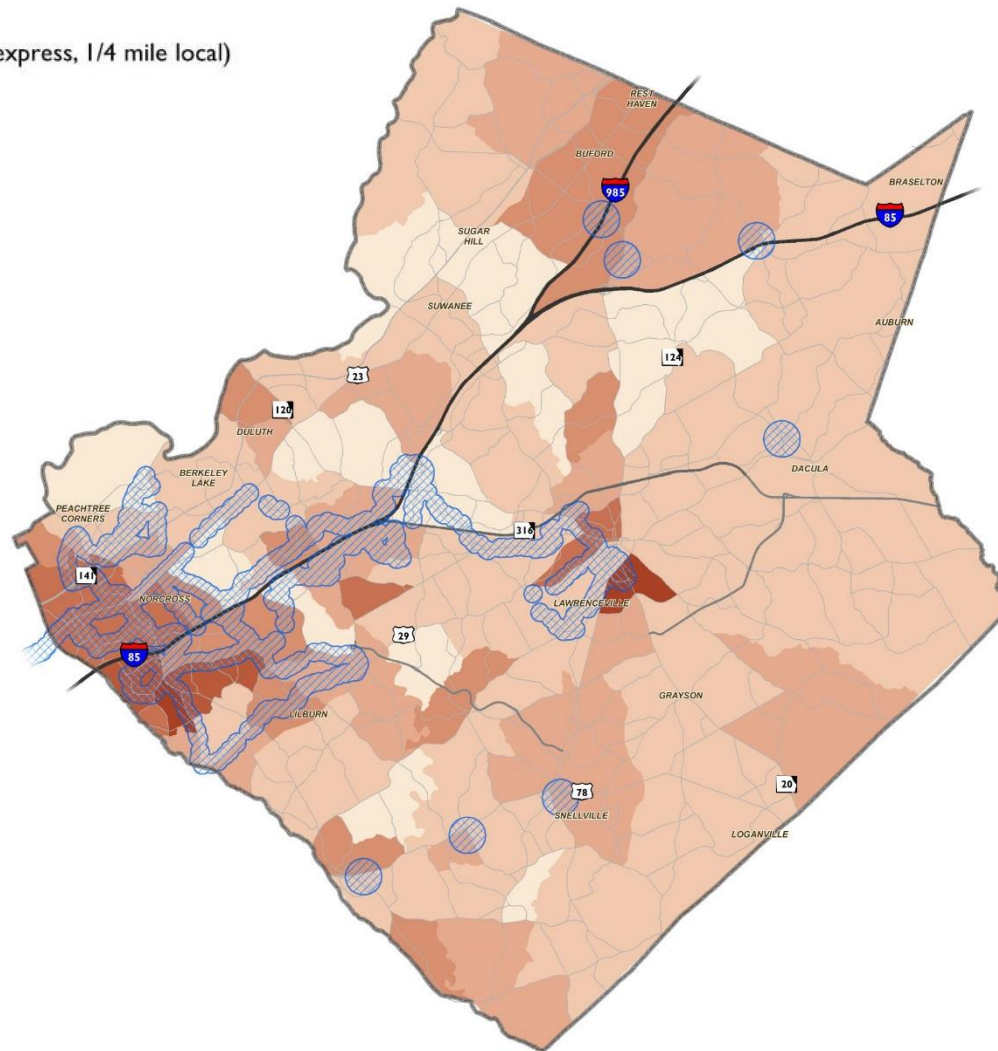
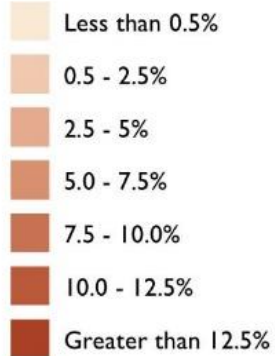
Individuals at or below the



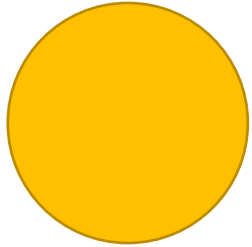
Breakout 2: Transit

 Transit Coverage (1/2 mile express, 1/4 mile local)

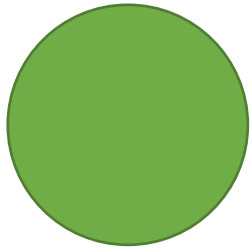
Percent of Households with No Vehicle



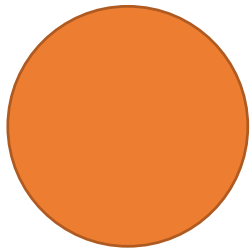
Breakout 2: Transit



Home



Work/ School



Other Destinations

Breakout #3:

Bicycle and Pedestrian

Breakout 3: Bike/Pedestrian

Destination2040

Gwinnett's Comprehensive Transportation Plan

Bicycle and Pedestrian Facilities

— Sidewalks along Public Roads

— On-Road Bike Lanes

Greenways, Multi-Use Paths and Trails

— Existing

— Planned (Funded)



Over 2,500 miles of paved sidewalks near roadways

Nearly 40 miles of multi-use paths

Approximately 25 miles of on-road bike lanes

Needs Assessment Phase

- Assessment across all modes
- Short-term needs
 - Draft recommendations to be completed summer/fall 2016
- Long-term needs
 - Draft recommendations to be completed early 2017

NEXT STEPS...

Destination2040

Gwinnett's Comprehensive Transportation Plan