

What is a Comprehensive Transportation Plan?

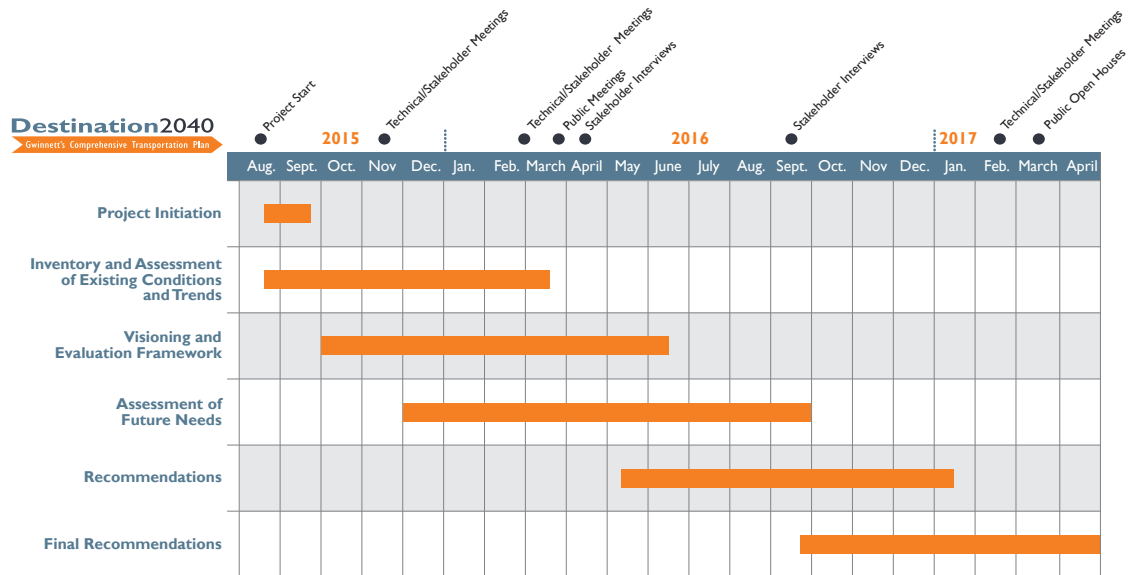
A Comprehensive Transportation Plan, or CTP, serves as a roadmap for how transportation will develop in Gwinnett County. This effort, funded by Gwinnett County and the Atlanta Regional Commission, will examine the many changes that have occurred in the County's population, employment, land use and development since the adoption of the 2008 CTP. It will focus on all modes of transportation including major roadways; all transit in the County; an overview of how people walk and ride bicycles; truck routes; and the Gwinnett County Airport.

Why Is an Update Needed?

The last CTP was adopted in 2008 and much has changed in Gwinnett County since that time. There have been shifts in population and employment, new developments have been built and some transportation policies have changed as well. That is why this update is so important. With these changes in mind, the County will work with the public to re-evaluate the vision, goals, objectives, and investment strategies set forth in the 2008 plan. The final plan will set a direction for transportation in Gwinnett County going forward.

Timeline & Project Status

The Comprehensive Transportation Plan update is a 20 month process. It begins by determining what has changed since the previous plan and by understanding what is happening now in Gwinnett. This phase, called the Inventory & Assessment of Existing Conditions analysis, concludes in February of 2016. Other tasks that will follow include a Visioning process, an Assessment of Future Needs, and a Bicycle and Pedestrian Planning effort. Draft recommendations will be presented to the public and the final plan will be presented to the County for adoption in early- to mid- 2017.



This Plan is about You!

We cannot complete the CTP update without you! Public input and feedback will help ensure the plan is on track with what people want when developing recommendations for the future of transportation in Gwinnett. Hands-on workshops, Open House presentations, and an interactive community survey will help the public stay engaged. We will be out and about in the County at local festivals and community events. Will we see you there? With your help, the CTP update will reflect the County's current transportation needs while addressing future growth opportunities.

There are Partner Agency and Community Stakeholder Advisory Groups representing local interests that will help guide the project, provide input, and represent the larger community. A Technical Committee representing key transportation planning agencies will also meet regularly to provide input and guidance on the technical aspects of the project.

Stay in the Loop!

We want to hear from you: the people who live, work and play in Gwinnett County every day. Here is how you can stay involved and give us your ideas throughout the process:

- Join the mailing list to receive updates!
- Email your name and mailing address to Destination2040@gwinnettcountry.com
- Visit us online at Destination2040Gwinnett.com