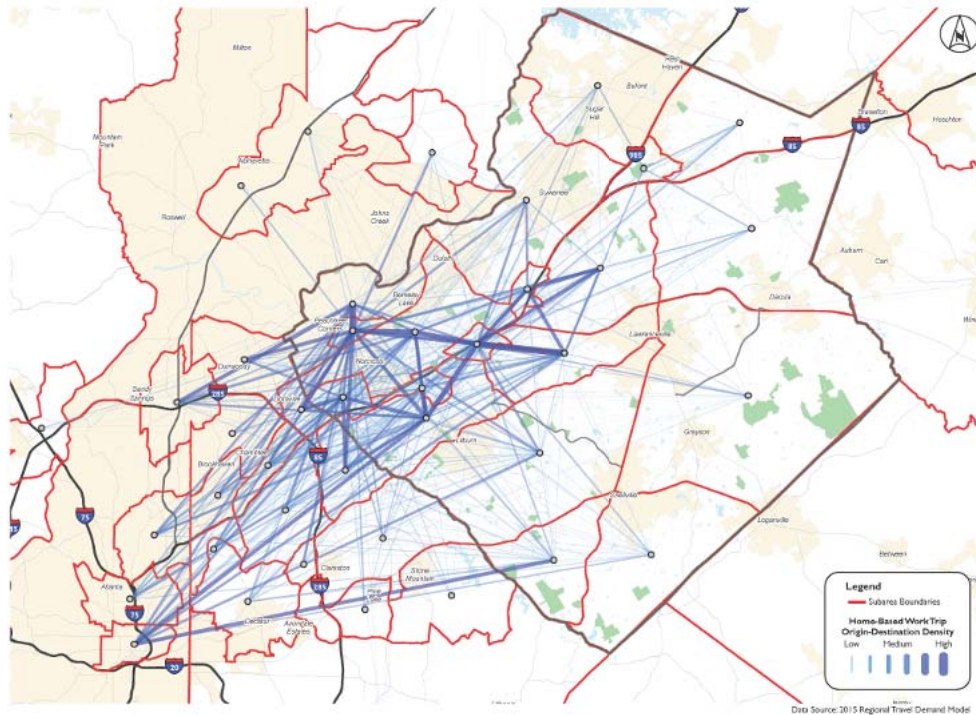


TRANSIT IN GWINNETT COUNTY

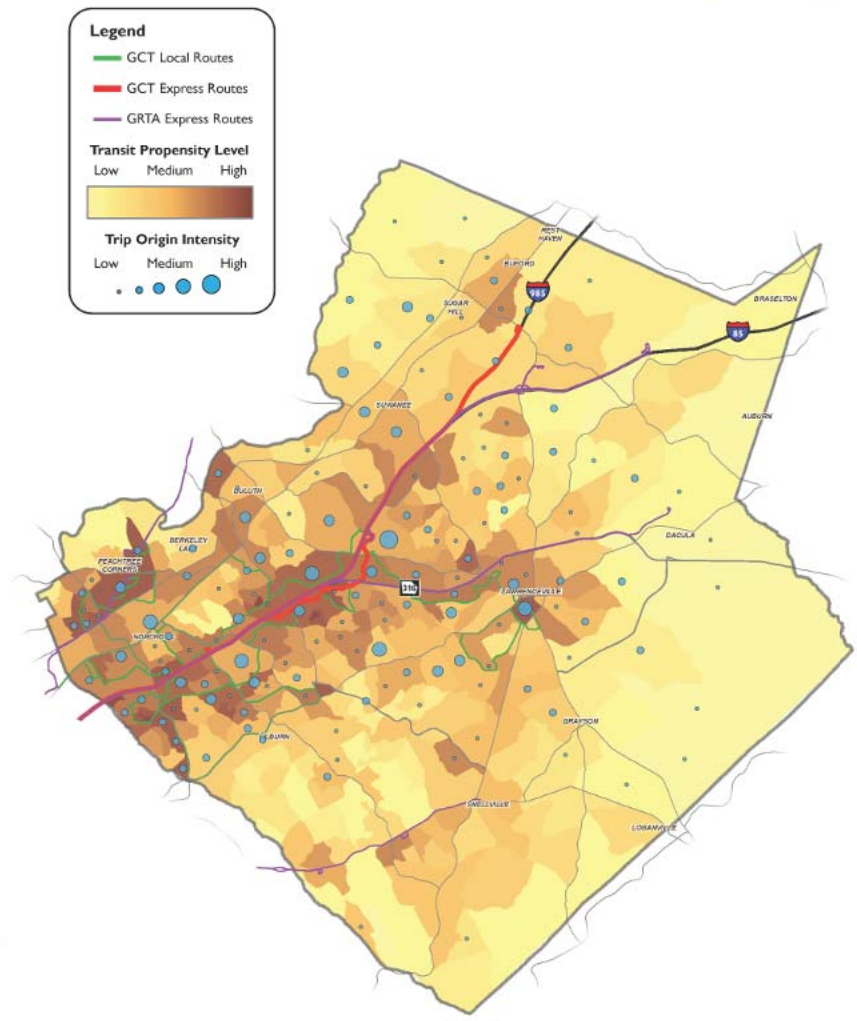
Home and Work Pairs Across All Modes



The map on the left (above) shows home and work trips, occurring across vehicle and transit modes, with at least one part of the trip in Gwinnett County (according to the Atlanta Regional Commission's Travel Demand Model). To "read this map": the darker the blue line, the more trips are taking place between the two locations, showing the strongest connections that may benefit from new or enhanced transit service.

The map on the right combines two important pieces of information: transit propensity (the likelihood of communities to generate transit trips) and the number transit trips currently being generated in those areas. A number of community factors determine whether transit can be successfully and cost-effectively implemented, including population/employment density, income level, auto ownership, and immigration status. To "read this map": the darker the color, the higher the propensity for transit usage. The largest circles represent the highest number of current trip origins. To understand where opportunities for improving transit ridership by enhancing service may exist, compare the darkest zones with the smallest circles.

Transit Propensity vs. Current Trip Origins



Data Sources: Destination 2040 On-Board Survey; 2014 American Community Survey