

GWINNETT COUNTY BOARD OF COMMISSIONERS SUGARLOAF PARKWAY EXTENSION PHASE 1-SECTION 2

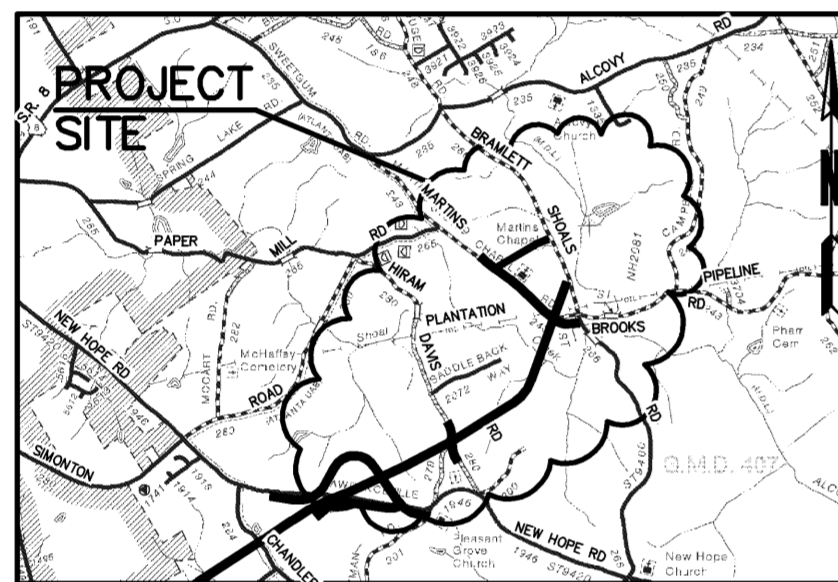
PROJECT NO. F-0270 - LIMITED ACCESS

STATE	PROJECT NUMBER	SHEET NUMBER	TOTAL SHEETS
GEORGIA	F-0270		

BEGIN PROJECT
BEGIN CONSTRUCTION
STA. 254+00.00
N 1426274.5643
E 2358082.5022
LAT. 33°47'37"
LONG. 76°34'05"

PROJECT MIDPOINT
STA 340+37.37
N: 1430619.3532
E: 2365524.3251
LAT. 33°48'16"
LONG. 76°32'34"

(FOR EX. SIGN, TRAFFIC
BARRIER AND TEMPORARY
TRAFFIC STRIPING REMOVAL)



VICINITY MAP
N.T.S.

DESIGN SPEEDS:
55 MPH MAINLINE
40 MPH HIRAM DAVIS ROAD*
45 MPH MARTINS CHAPEL ROAD*

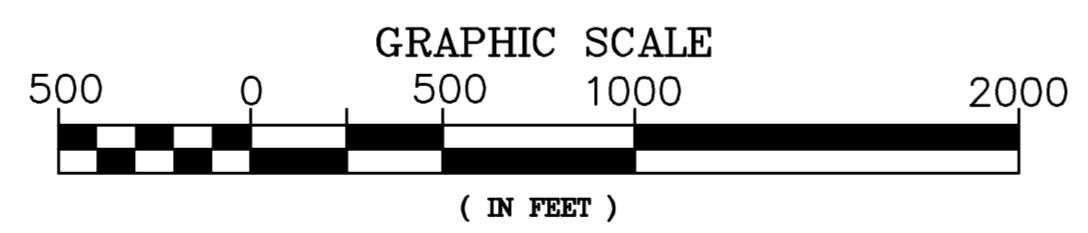
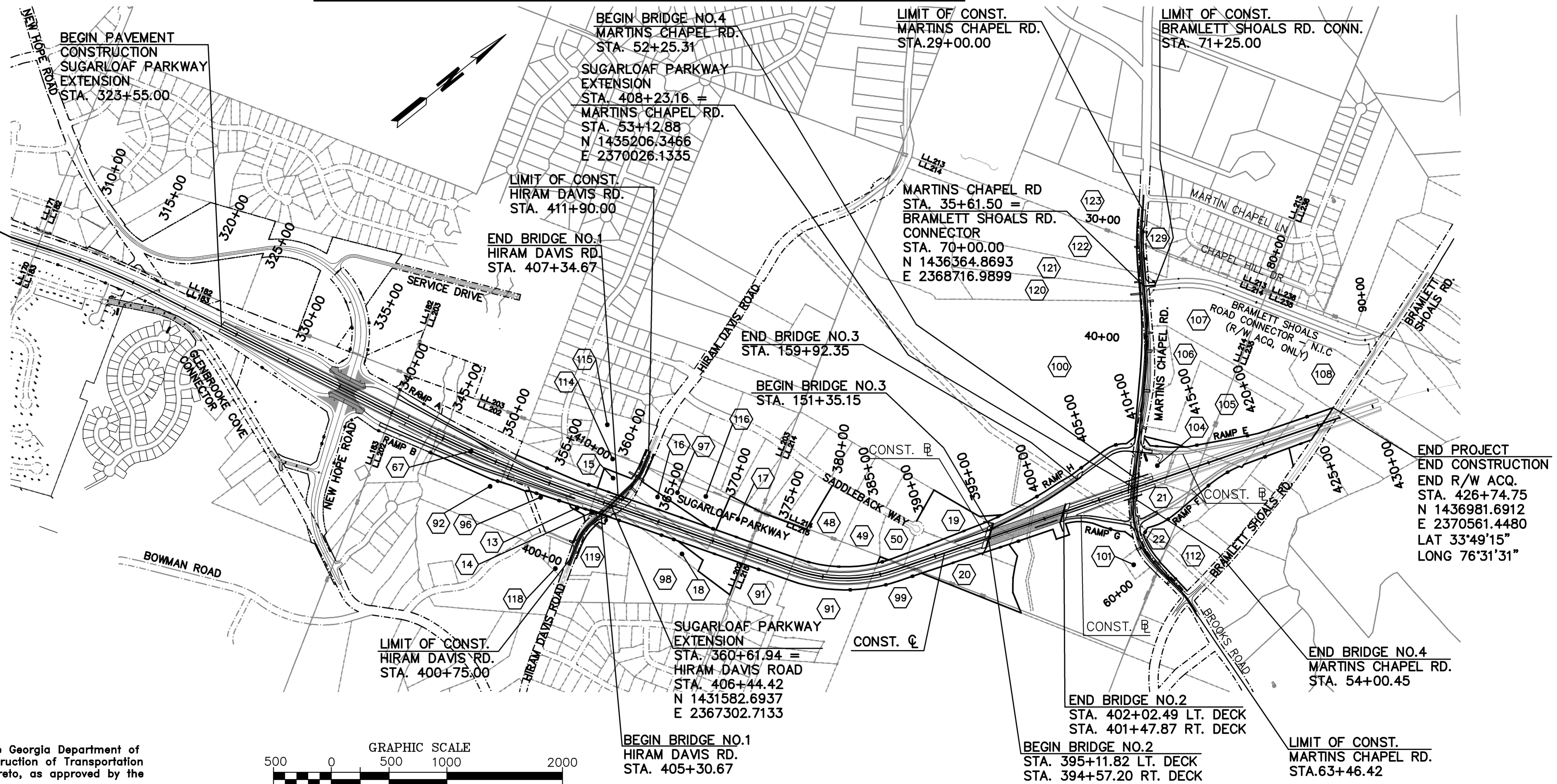
*DESIGN SPEED = POSTED SPEED

LENGTH OF PROJECT	MILES
NET LENGTH OF ROADWAY	3.141
NET LENGTH OF BRIDGES	0.131
NET LENGTH OF PROJECT	3.272
NET LENGTH OF EXCEPTIONS	0.00
GROSS LENGTH OF PROJECT	3.272

Notes


All work to be done in accordance with the Georgia Department of Transportation Standard Specifications Construction of Transportation Systems, 2001 edition and supplements thereto, as approved by the Federal Highway Administration.

The data, together with all other information shown on these plans, or in any way indicate thereby, whether by drawings or notes, or in any other manner, are based on field investigations & are believed to be indicative of actual conditions. However, the same are shown as information only, are not guaranteed and do not bind Gwinnett County in any way. The attention of the bidder is specifically directed to articles 102.04, 102.05 & 104.03 of the Standard Specifications of the Department of Transportation, State of Georgia, Construction of Transportation Systems, and any modifications thereof, which will be a part of this contract.
Horizontal Survey Datum-NAVD83, GA West Zone, Vertical Survey Datum-NAVD 88.
These plans are prepared in English Units.



PLANS PREPARED UNDER THE SUPERVISION OF _____
 APPROVED: _____
 DATE: _____

PREPARED BY:



PRECISION PLANNING, INC.
 PLANNERS, ENGINEERS, ARCHITECTS & SURVEYORS
 400 PIKE BOULEVARD, P.O. BOX 2210
 LAWRENCEVILLE, GEORGIA 30046
 (770) 338-8000

PLANS COMPLETED: OCTOBER 9, 2008	
REVISIONS	
DATE	DESCRIPTION