

**PROPOSED 2017 SPLOST TRANSPORTATION IMPROVEMENT PROGRAM
CITIZENS PROJECT SELECTION COMMITTEE
AGENDA
SEPTEMBER 12, 2016**

- I. Welcome and Introductions
- II. Committee Organization
 - A. Role and Function of Committee Members and Alternates
 - B. Ground Rules
 - C. Election of Officers
- III. Presentation of Information
 - A. Transportation Categories
 - B. Category Allocations
- IV. Next Steps
 - A. Housekeeping/Communications
 - B. Code of Ethics
 - C. Next Meeting
- V. Public Comment
- VI. Adjourn

**Proposed 2017 SPLOST Transportation Improvement Program
Citizens Project Selection Committee
Minutes
September 12, 2016**

Members Present: Uday Parikh, Sherry Ferguson, Chris Ford, Steven Douches, Laurie McClain, Joy Monroe, Charles McDaniel, Chad Lockhart, Alan Kaplan, Davida Baker, Sohum Mehta

Alternates Present: Piper Keairnes, Sal Pirzad, Raymond Rodden, Darryl Franklin, Debra Pennington, Art Sheldon, Kenny King, Mark Williams, Patricia Gabilondo, Erik Provitt

Alternates Absent: Greg Cantrell

County Staff: Alan Chapman, Lewis Cooksey, David Tucker, Amanda Reed, Jody Woodall, Brittney Bulfinch, Edgardo Aponte, John Ray, Chuck Bailey, Vince Edwards

Facilitator: Carrie Barnes

I. Welcome and Introductions

Mr. Alan Chapman began the meeting at 6:45pm. He welcomed and thanked everyone for attending. He provided a brief overview of the meeting expectations. The Committee made introductions.

II. Committee Organization

A. Role and Function of Committee Members and Alternates

Ms. Carrie Barnes provided the role and function of the Committee.

B. Ground Rules

Ms. Carrie Barnes provided some ground rules and no discussion was held.

C. Election of Officers

Ms. Carrie Barnes led the discussion on the election of the Chair and Vice-Chair. The Committee discussed the Chair and selected Alan Kaplan to serve in this role. Sherry Ferguson and Sohum Mehta were nominated as Vice-Chair. The Committee held a written vote and selected Sohum Mehta as the Vice-Chair.

III. Presentation of Information

A. Transportation Categories

Mr. Alan Chapman presented information on each of the project categories and descriptions. Discussions were held on the project categories.

B. Category Allocations

Mr. Alan Chapman presented the initial allocations from three of the previous SPLOST programs. An initial allocation worksheet was presented to the Committee for their use in working on the category allocations for the proposed 2017 SPLOST. Discussions were held on the initial category allocations both Tier I and Tier II and program expectations.

He asked the Committee to work on their individual recommendations and with their individual constituent groups before the next meeting. The worksheet and draft project lists were provided to all Committee Members and Alternates at the end of the meeting.

IV. Next Steps

A. Housekeeping/Communications

Mr. Alan Chapman gave a brief overview of the webpage established for the CPSC and the email for the public to provide information. The email is 2017CitizensProjectSelectionCommittee@gwinnettcountry.com.

B. Code of Ethics

Mr. Alan Chapman gave a brief statement regarding the Code of Ethics and stated they will be receiving information from the County Clerk to complete.

C. Next Meeting

Mr. Alan Chapman led the discussion for the next meeting and proposed the meeting to be held on September 26, 2016. The Committee will review their calendars and follow up with County staff. The purpose of the meeting will be to finalize the category allocations for the proposed 2017 SPLOST.

V. Public Comment

Public comment was held.

VI. Adjourn

Meeting was adjourned at 8:33pm.



TRANSPORTATION
DEPARTMENT

Proposed 2017 SPLOST Citizens Project Selection Committee

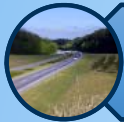
gwinnettcounty
GOVERNMENT

September 12, 2016

Agenda



Welcome and Mission



Committee Organization



Transportation Categories



Category Allocations

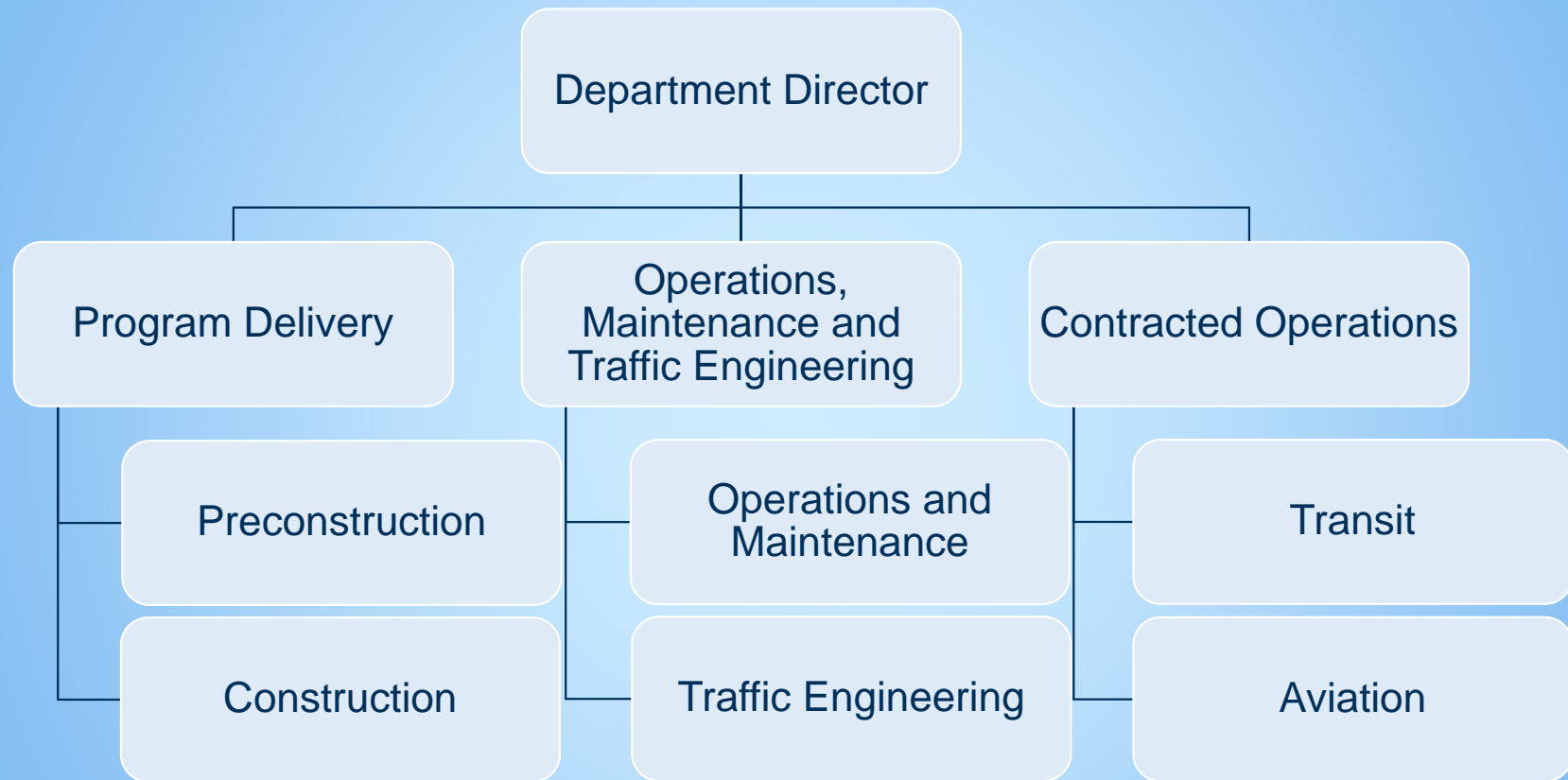


Next Steps



Public Comment

Department Overview



Citizens Project Selection Committee

INTEREST GROUP	MEMBER	ALTERNATE
District 1	Uday Parikh	Jay Piper Keairnes
District 2	Sherry Ferguson	Sal Pirzad
District 3	Christopher Ford	Greg Cantrell
District 4	Steven Douches	Raymond Rodden
Business	Laurie McClain	Darryl Franklin
Civic	Joy Monroe	Debra Pennington
Environmental	Charles McDaniel	Art Sheldon
Freight	Charles Lockhart	Kenny King
Schools	Alan Kaplan	Mark Williams
Seniors	David Baker	Patricia Gabilondo
Young Professional	Sohum Mehta	Erik Provitt

Department of Transportation Mission

The mission of the Gwinnett County Department of Transportation is to enhance quality of life by facilitating the **mobility** of people and goods **safely** and **efficiently**.



Mobility

Safely

Efficiently



Committee Organization

Role and Function of Committee

Members:

- Liaison to members of the public within your interest group
- Attend each meeting
- Contact Alternate if unable to attend
- Notify County staff if unable to attend
- Participate in project discussions
- Make motions on allocations / project recommendations
- Vote on allocations / project recommendations



Committee Organization

Role and Function of Committee

Alternates:

- Liaison to members of the public within your interest group
- Attend each meeting
- Contact Member if unable to attend
- Notify County staff if unable to attend
- Participate in project discussions
- Make motions and vote when filling in for the absent Member



Committee Organization

Role and Function of Committee

General Public:

- Opportunity to speak during comment period (register on sign-in sheet)
- Comment cards
- Comment period at the beginning and end of future meetings
- Encouraged to contact member/alternate
- Email address to receive public input and information:
2017CitizensProjectSelectionCommittee@gwinnettcounty.com
- CPSC information will be posted to the County's website under Transportation/Citizens Project Selection Committee



Committee Organization

Role and Function of Committee

County staff:

- Provide meeting set up, minutes, organizational materials and any requested information
- Post CPSC information to the County's Website
- Coordinate any public comment through sign-up sheets
- Handle comment cards, website and relay received information to Committee



Committee Organization

Role and Function of Committee

Ground Rules

- Everyone participates and no one monopolizes the conversation
- Quorum of 6 out of 11 required
- Role of Chair and Vice-Chair
 - Chair will help facilitate meetings and call votes
 - Vice-Chair will act as Chair in the Chair's absence
- All cell phones, electronic devices, etc. should be placed on mute
- Stay on task – a lot of information to cover, respect others' time
- All meetings open to the public



Committee Organization

Role and Function of Committee

Election of Officers

- Chair
- Vice-Chair



Transportation Categories

- Transportation Planning
- Residential Speed Control
- Unpaved Roads
- Capital Projects Rehabilitation and Resurfacing
- Bridges, Culverts and Transportation Drainage
- Road Safety and Alignment
- School Safety
- Sidewalks and Pedestrian Safety
- Intersections
- Major Roads
- County / City



Transportation Planning

- Funds County's Comprehensive Transportation Plan updates
- Provides for project and program feasibility studies
- Used to develop requests / applications for potential Federal and State funding

Destination2040

Gwinnett's Comprehensive Transportation Plan



Transportation Planning

What is the Comprehensive Transportation Plan (CTP)?

- A roadmap for how transportation will develop through 2040
- Examines the many changes that have occurred in population, employment, land use and development since the prior CTP
- Allows the County to work with the public to evaluate current vision, goals, objectives and investment strategies to set a direction for transportation going forward



Transportation Planning

2015 CTP Background

- Funding provided by Gwinnett County and the Atlanta Regional Commission
- 20-month process (Mid 2015 – Spring 2017)
- Addresses all modes of transportation

Current Status

- Completed assessment of existing conditions
- Completed initial public input
- Preparing short range plan



Residential Speed Control

- Installation of series of speed humps within a neighborhood identified through a petition process
- Completed over 280 speed hump projects since 1992
- Category could also provide funding to study and implement various other capital speed control measures



1,337 Speed Humps
on 285 streets





Unpaved Roads

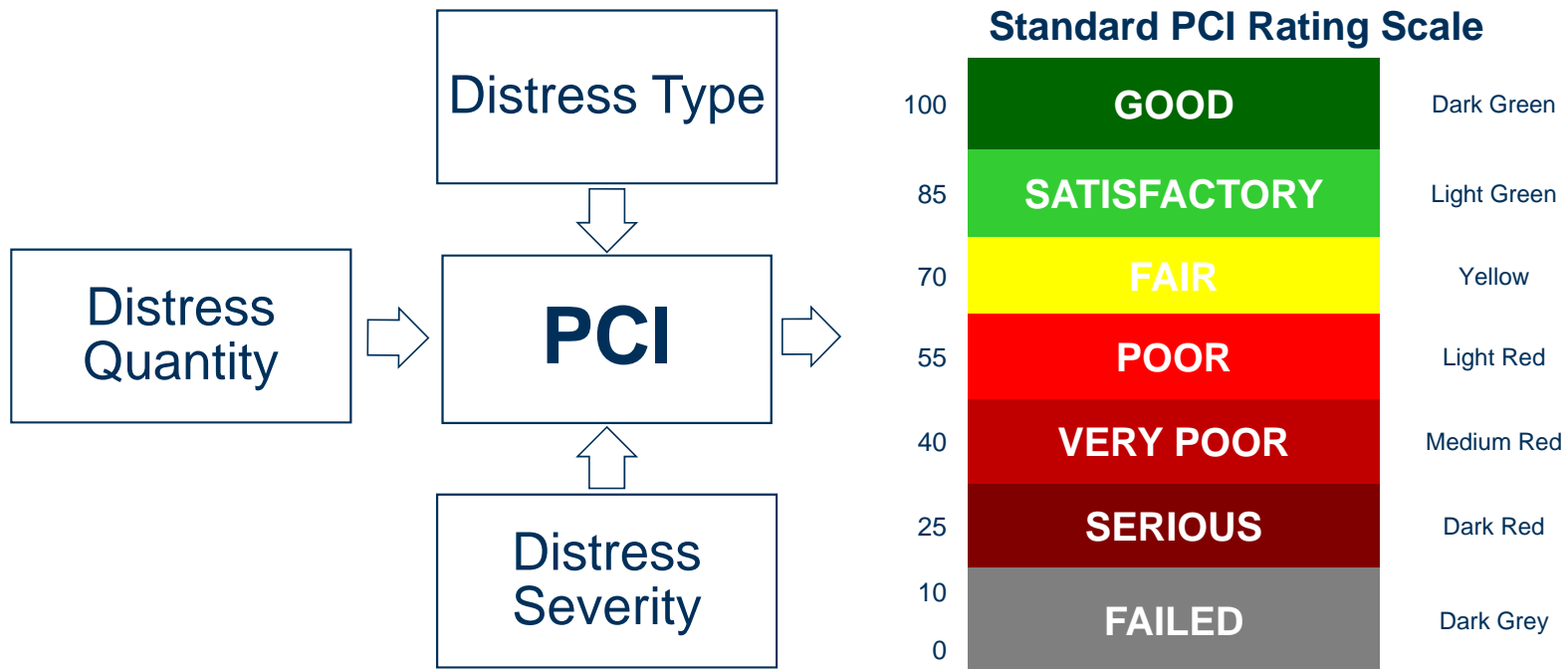
- Paving of gravel and dirt roads that are now maintained by County forces
- Most of the remaining unpaved roads would require alignment and drainage improvements to meet minimum paved road standards
- Prior programs have reduced the County's unpaved road mileage from over 100 to approximately 20 miles





Capital Project Rehabilitation and Resurfacing

Resurfacing program preserves existing roadways



Pavement Condition Index (PCI)



Capital Project Rehabilitation and Resurfacing

PCI
of 50



PCI
of 60



PCI
of 65



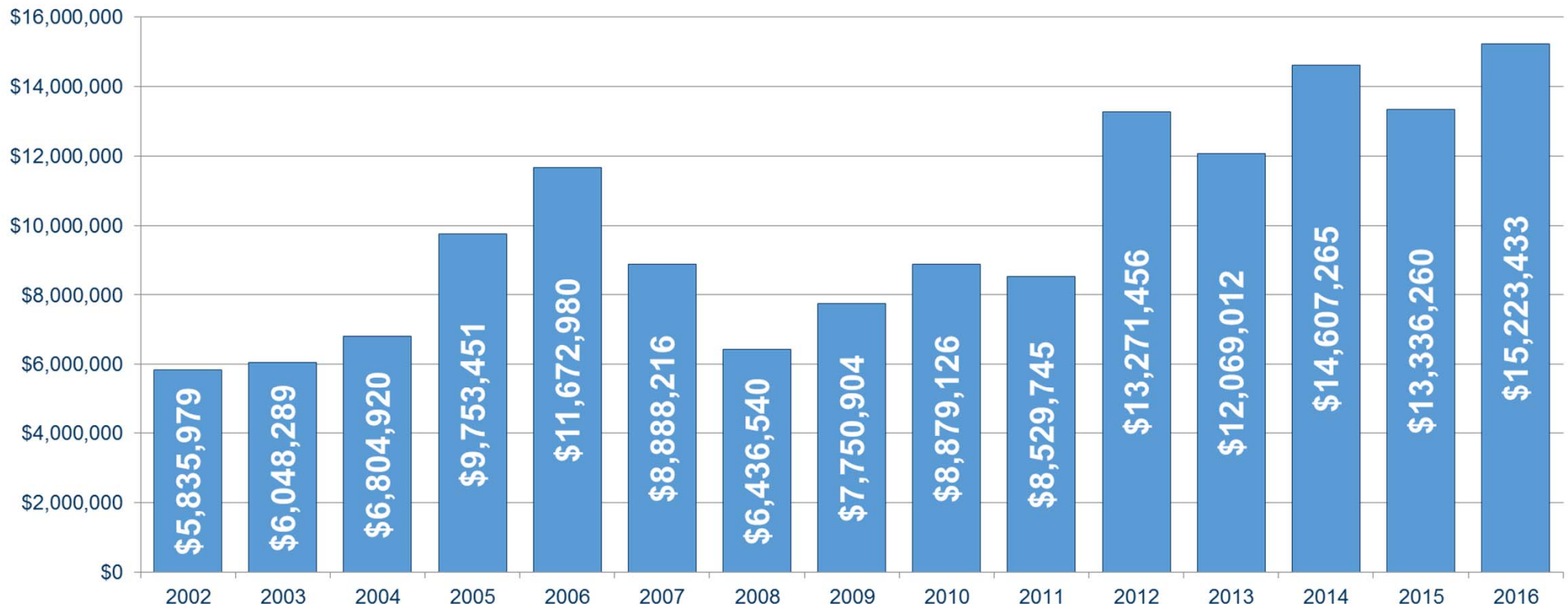
PCI
of 70





Capital Project Rehabilitation and Resurfacing

Resurfacing Contract Amounts





Capital Project Rehabilitation and Resurfacing

Estimated cost over six years to raise PCI to 65

- Approximate annual cost*:

Year 1 \$24 million

Year 2 \$24 million

Year 3 \$25 million

Year 4 \$25 million

Year 5 \$26 million

Year 6 \$26 million

Total \$150 million

* A deterioration rate of 3 PCI points a year was assumed

* Cost based on 2016 resurfacing bid results. An inflation factor of 3% per year was used.

* Georgia DOT currently provides approximately \$6 million per year



Bridges, Culverts and Transportation Drainage

- Reconstruct or rehabilitate existing bridges, culverts and pipe systems
 - Replace or rehabilitate due to condition of structure
 - Replace to improve alignment of bridge approaches, bridge width and other safety features
 - Replace due to limited capacity of structure to carry appropriate stormwater volume
- Construct new bridges or widen existing bridges to improve connectivity and provide congestion relief



Bridges, Culverts and Transportation Drainage



Killian Hill Road Bridge Replacement includes widening and vertical re-alignment



Bridges, Culverts and Transportation Drainage



Old Fountain Road Bridge Replacement includes widening and vertical re-alignment

Bridges, Culverts and Transportation Drainage





Bridges, Culverts and Transportation Drainage





Road Safety and Alignment

Types of Road Safety and Alignment Improvements

- Horizontal alignment
- Vertical alignment
- Sight distance
- Offset intersections
- Skewed intersections
- Merging, weaving and other conflicting traffic



Road Safety and Alignment



Burns Road at Dickens Road (before)



Webb Gin House Road at Moon Place Road (before)



Burns Road at Dickens Road (after)



Webb Gin House Road at Moon Place Road (after)



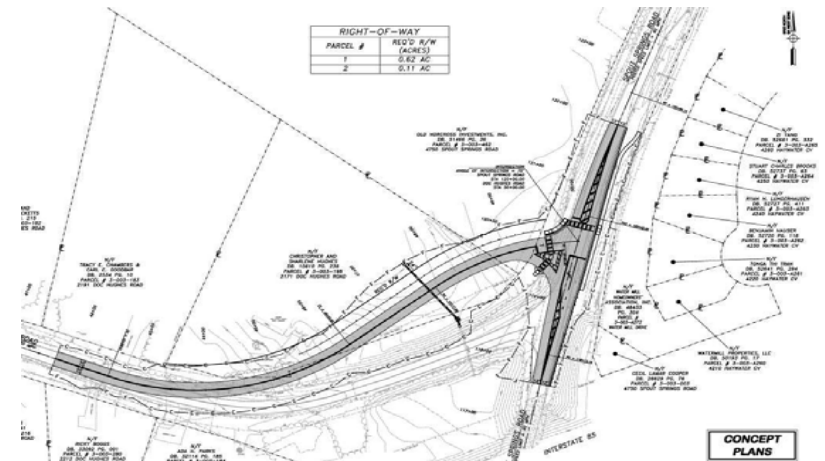
Road Safety and Alignment



Pleasant Hill at US 23 / SR 13 / Buford Highway



Road Safety and Alignment



Doc Hughes Road at Spout Springs Road



School Safety

- Improvements at new schools
- New roadways at schools
- Improvements to adjacent roadways
- Sidewalks to schools
- Queuing lanes/sight distance improvements
- Traffic signals, school flashers, signage, striping and other traffic control devices



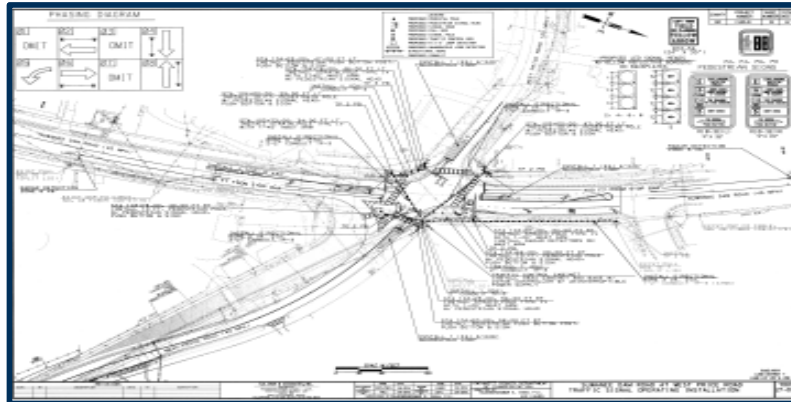
School Safety



**Graves
Road /
Graves
Elementary
School**



School Safety



**Suwanee
Dam Road
at West
Price Road
/ North
Gwinnett
High
School**





School Safety



Richland Parkway



Sidewalks and Pedestrian Safety

- Construct new sidewalks, bikeways and multi-use paths along roadways throughout the County
- Connect short lengths of sidewalk in order to link existing sidewalk segments, or to link residential areas to nearby activity centers
- Provide appropriate crosswalks, pedestrian signals, ADA compliant ramps, pedestrian refuge islands



Sidewalks and Pedestrian Safety



**Lake
Lucerne
Road
(before
and after)**



**North
Berkeley
Lake Road
(before and
after)**



Sidewalks and Pedestrian Safety



**SR 120 /
Duluth
Highway (from
Lawrenceville
Suwanee Road
to Riverside
Parkway)**



**Crooked Creek
Road (from
Holcomb
Bridge Road to
Spalding
Drive)**

Sidewalks and Pedestrian Safety





Intersections

- Provide turn lanes, align cross streets and improve sight distance
- These projects are focused on moving vehicles, bicyclists and pedestrians safely and smoothly through intersections, and may also include improving the efficiency of traffic signals or adding pedestrian signals and crosswalks



Intersections

Types of intersection improvements

- ATMS/ITS improvements
- Multi-way intersection upgrades
- Safety improvements at intersections
- Intersections of two major roadways
- Intersections of one major roadway and one minor roadway
- Intersections of two minor roadways and “T” intersections



Intersections



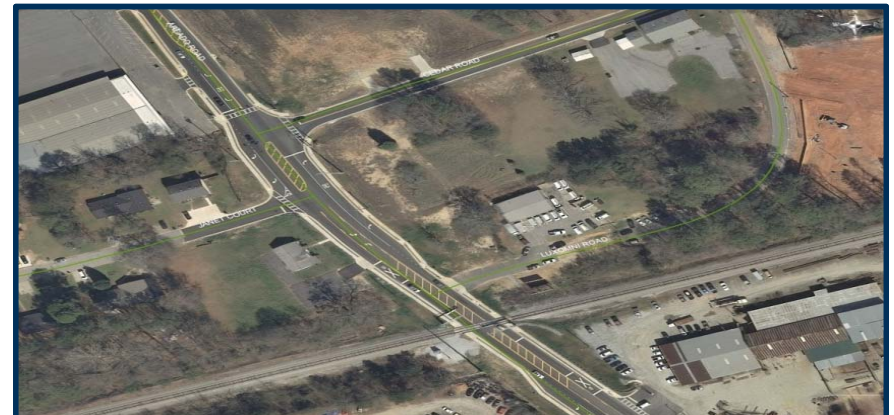
Old Norcross Road at West Liddell Road



Old Fountain Road at Old Peachtree Road



Arcado Road at Luxomni Road (before)



Arcado Road at Luxomni Road (after)



Intersections



Arnold Road at Hutchins Road (before)



Arnold Road at Hutchins Road (after)



US 29 at Beaver Ruin Road (before)



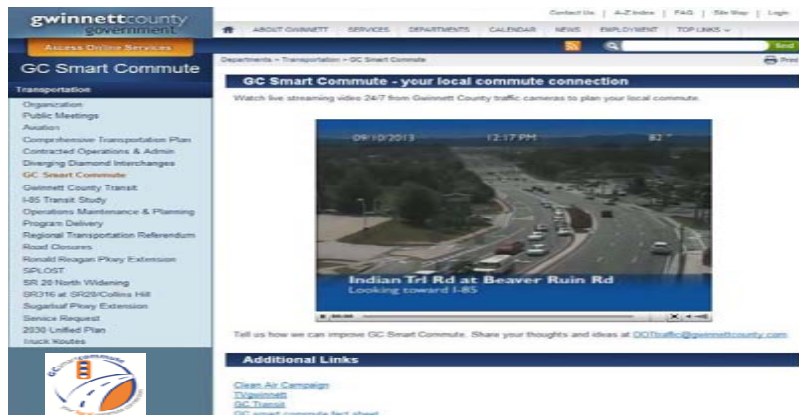
US 29 at Beaver Ruin Road (after)



Intersections



**Traffic
Control
Center**



**ATMS/
ITS**



Major Roads

- Construct new roads and increase the capacity of existing roads in order to handle traffic in a safer and more efficient manner
- Improve roadways unable to handle projected future traffic volumes, as well as those needed to improve circulation within congested areas
- Provide interchange improvements or new interchanges to improve safety and provide relief to adjacent roadways



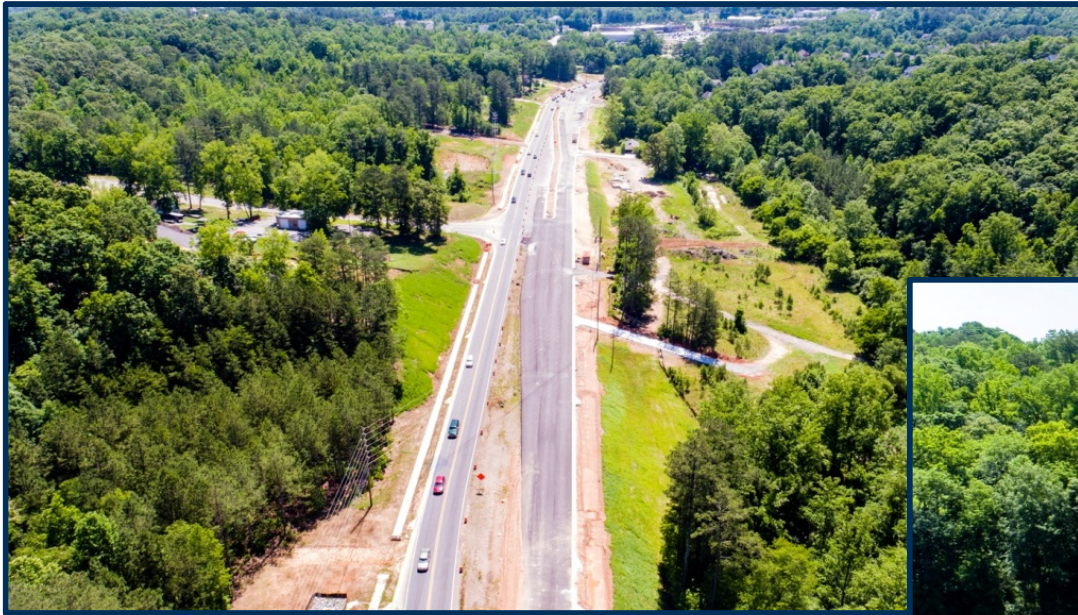
Major Roads

Types of potential major road improvements

- New location roads
- Major interchanges
- 2-lane to 3-lane widenings
- 2-lane to 4-lane widenings
- 4-lane to 6-lane widenings



Major Roads



Major Roads





Major Roads



**SR 324 /
Gravel Springs Road
from
Jim Moore Road to Dacula
Road**



**Peachtree Industrial
Boulevard
from
McGinnis Ferry Road to
Moore Road**

Initial 2005 SPLOST Category Allocations

CATEGORY	Tier I	Tier II
Bridges, Culverts and Roadway Drainage	\$14 million	--
Capital Projects Rehabilitation and Resurfacing	\$25 million	\$1 million
Intersections	\$20 million	\$2 million
Major Roads	\$32.8 million	\$3 million
Neighborhood Speed Control	\$900,000	--
Road Safety and Alignment	\$25 million	\$4 million
School Safety	\$27.3 million	\$5 million
Sidewalks/Pedestrian Safety	\$15 million	\$3 million
Transportation Planning	\$1 million	--
Unpaved Roads	\$1 million	--
Total	\$162 million	\$18 million

Initial 2009 SPLOST Category Allocations

CATEGORY	Tier I	Tier II
Bridges, Culverts and Roadway Drainage	\$50.8 million	\$6.5 million
Capital Projects Rehabilitation and Resurfacing	\$50.8 million	\$6.5 million
Intersections	\$36.9 million	\$4.8 million
Major Roads	\$92.4 million	\$11.8 million
Residential Speed Control	\$738,895	--
Road Safety and Alignment	\$18.5 million	--
School Safety	\$23.1 million	--
Sidewalks and Pedestrian Safety	\$36.9 million	\$4.8 million
Transportation Planning	\$6 million	\$800,000
Unpaved Roads	\$461,807	--
Total	\$316.6 million	\$35.2 million

Initial 2014 SPLOST Category Allocations

CATEGORY	Tier I	Tier II
Bridges, Culverts and Transportation Drainage	\$30 million	--
Capital Projects Rehabilitation and Resurfacing	\$30 million	\$2.6 million
Intersections	\$33 million	\$10 million
Major Roads	\$47.6 million	\$7.4 million
Residential Speed Control	\$500,000	--
Road Safety and Alignment	\$15 million	--
School Safety	\$15 million	--
Sidewalks and Pedestrian Safety	\$27 million	\$5 million
Transportation Planning	\$1.3 million	--
Unpaved Roads	\$700,000	--
TOTALS	\$200.1 million	\$25 million
County / City Joint Projects	\$25 million	

Proposed 2017 SPLOST Category Allocations

Category	Tier I (\$ millions)			Tier II – (\$ millions)
	Low	CPSC Recommendation	High	
Bridges, Culverts and Transportation Drainage	40		70	
Capital Projects Rehabilitation and Resurfacing	110		130	
Intersections	35		55	
Major Roads	100		130	
Residential Speed Control	0.5		1	----
Road Safety and Alignment	25		35	
School Safety	20		30	
Sidewalks and Pedestrian Safety	20		40	
Transportation Planning	1		4	----
Unpaved Roads	1		2	----
Total	\$352,500,000	\$406,862,730*	\$497,000,000	\$48,634,500

* Does not include \$30,847,770 million for partner projects with cities

Tier I & Tier II Totals \$455,497,230*

gwinnettcounty

Next Steps – Communications

- CPSC information will be posted to the County's website under Transportation/Citizens Project Selection Committee
- Email address to receive public input and information:
2017CitizensProjectSelectionCommittee@gwinnettcounty.com
- Code of Ethics – you should receive an email notification from the County Clerk to complete
- Draft Lists of Potential Projects

Next Steps

- Next Meeting
 - September 26, 2016
 - Conference Room A

Public Comment

- Sign-in sheet at door
- Three minutes per person
- Complete contact sheet
- Email additional comments



gwinnettcounty
GOVERNMENT

**TRANSPORTATION
DEPARTMENT**

**Thank you for your
participation.**