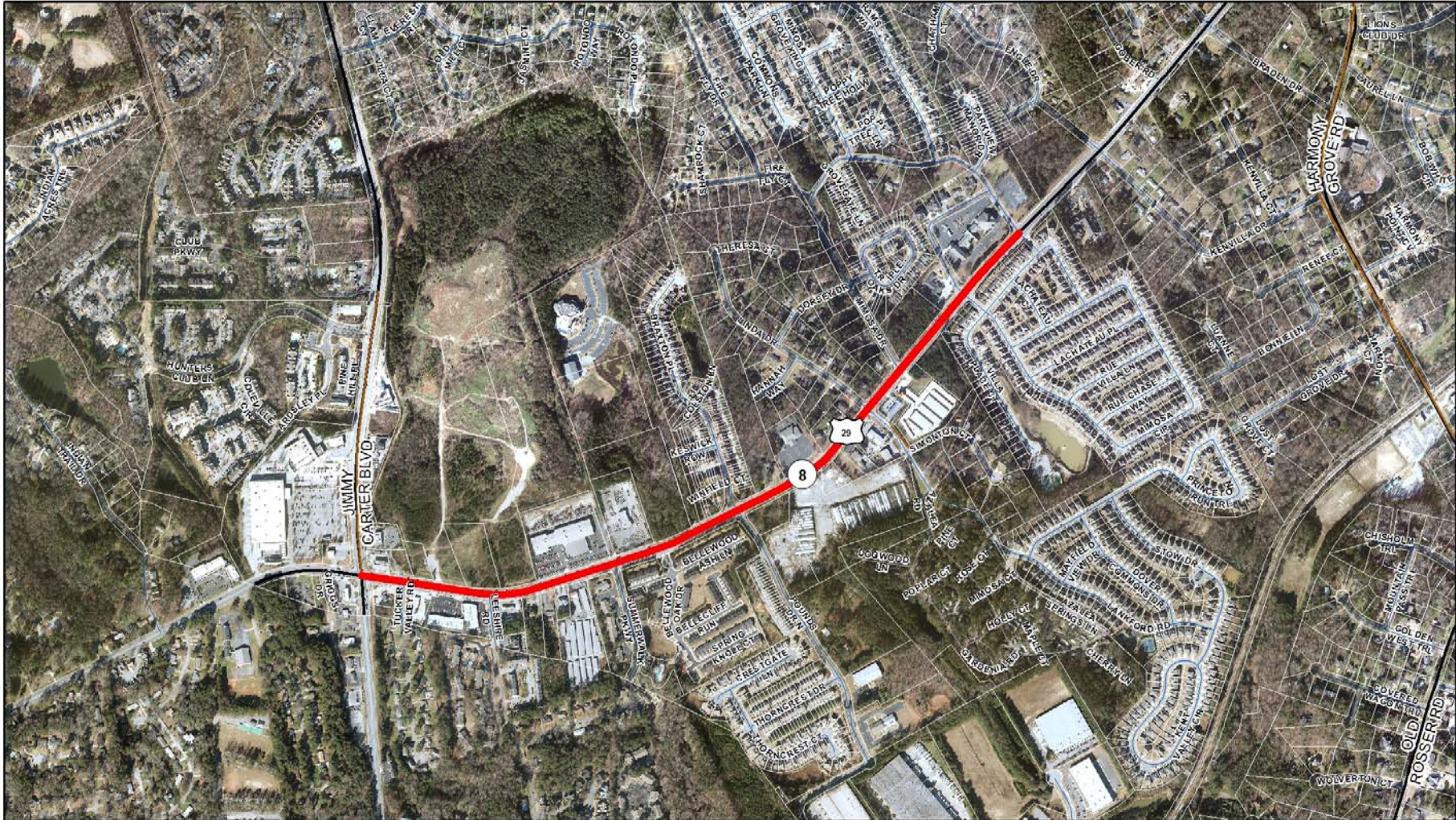


US 29/SR 8/LAWRENCEVILLE HIGHWAY (JIMMY CARTER BOULEVARD TO MIMOSA DRIVE)(F-1153)



These materials are provided "as is" without warranty of any kind, either express or implied, including but not limited to, the implied warranties of merchantability or fitness for a particular purpose. Use of these materials constitutes acceptance of this disclaimer of liability. This product is for informational purposes and may not have been prepared for, or be suitable for legal, engineering, or surveying purposes. Users of this information should review or consult the primary data and information sources to ascertain the usability of the information.

**PROJECT DESCRIPTION SUMMARY:**

This project will construct new concrete sidewalks along both sides of Lawrenceville Highway from Jimmy Carter Boulevard to Mimosa Drive. Curb and gutter and other drainage improvements will be included within the project scope. The net length of new sidewalk is approximately 1.10 mile. This project is funded by the 2014 SPLOST program and Federal Transit Administration (FTA) funds.