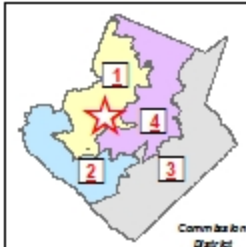
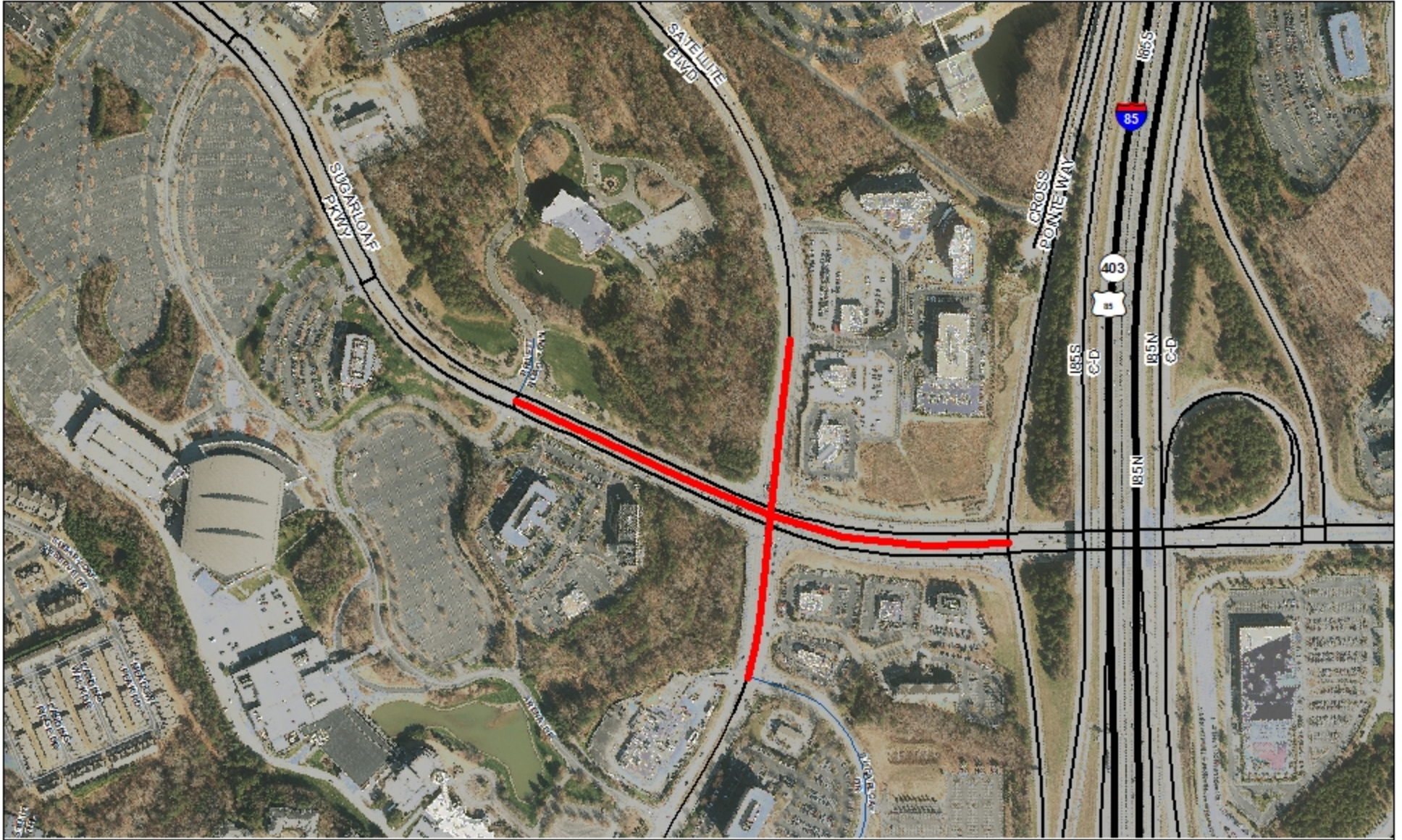


SUGARLOAF PARKWAY AT SATELLITE BOULEVARD (M-1051,F-1265)



PROJECT DESCRIPTION SUMMARY:

This project consists of widening Sugarloaf Parkway from a four to a six lane roadway from west of Satellite Boulevard to the Interstate 85. In addition, the southbound dual left turn lanes on Satellite Boulevard at Sugarloaf Parkway will be replaced with triple southbound left turn lanes. It also includes the replacement of the traffic signal at Satellite Boulevard with a new traffic signal and the installation of curb and gutter, sidewalks and associated drainage improvements. This project is funded by the 2014 and 2017 SPLOST Programs and the Sugarloaf Community Improvement District (CID).



0 270 540
Foot

These materials are provided "as is" without warranty of any kind, either express or implied, including but not limited to, the implied warranties of merchantability or fitness for particular purpose. Use of these materials constitutes acceptance of this disclaimer of liability. This product is for informational purposes and may not have been prepared for, or be suitable for legal, engineering, or surveying purposes. Users of this information should review sources to ascertain the usability of the information.