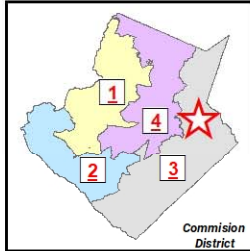
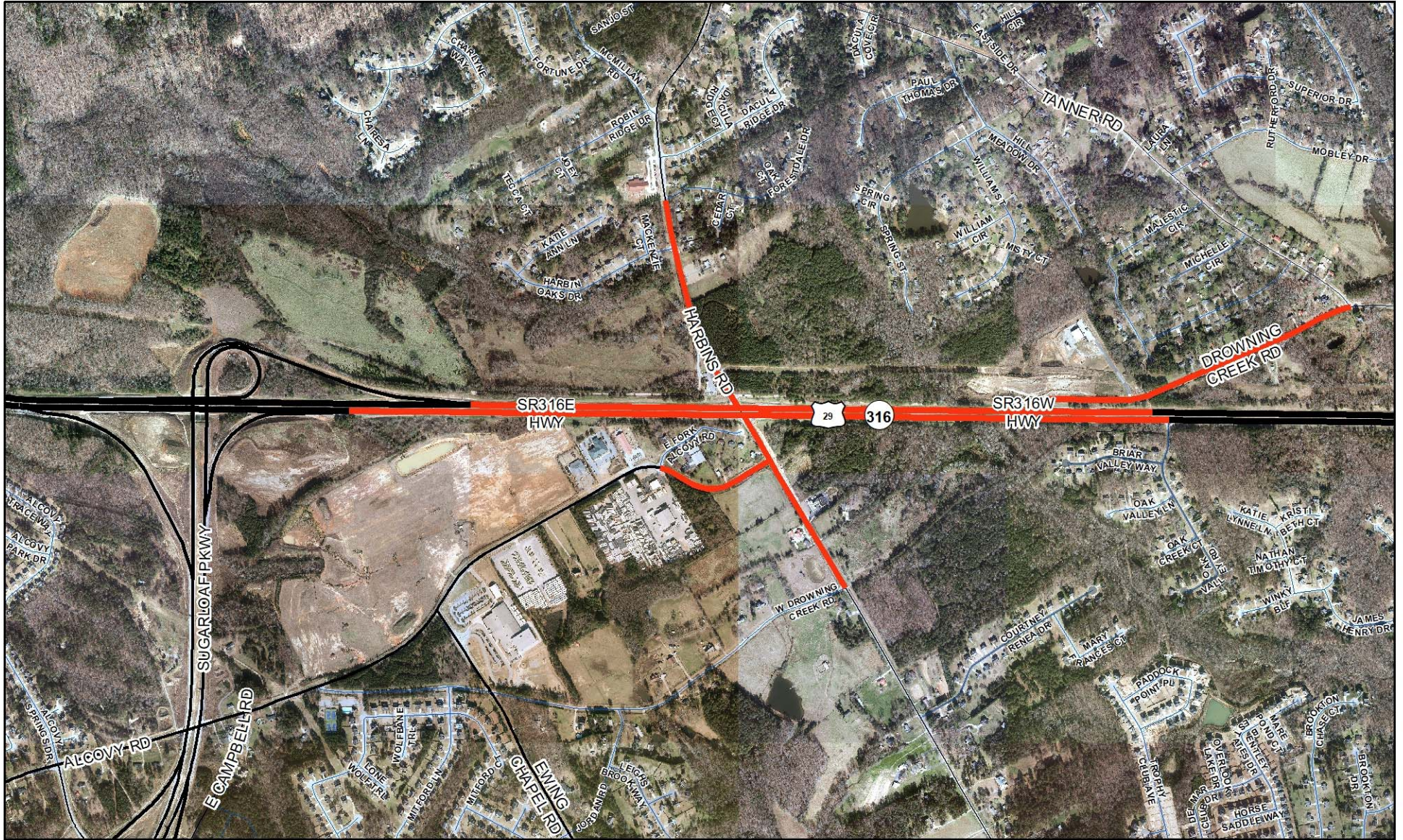
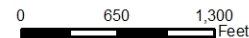


HARBINS ROAD INTERCHANGE AT SR 316/US 29 (F-1249-01/F-1253-01/M-1061-01/M-1057-01)



PROJECT DESCRIPTION SUMMARY:

This project will construct a new grade separated interchange and 5-lane bridge over SR 316/University Parkway at the intersection of Harbins Road. The new bridge will include dual westbound left turn lanes, single eastbound turn lane and through lanes. The new interchange will have full access ramps eastbound and westbound as well as a Collector Distributor road with direct access to Sugarloaf Parkway. This project is funded by 2014 SPLOST as well as three categories from the 2017 SPLOST program (Intersections, Bridges and Safety and Alignment).



These materials are provided "as is" without warranty of any kind, either express or implied, including but not limited to, the implied warranties of merchantability or fitness for particular purpose. Use of these materials constitutes acceptance of this disclaimer of liability. This product is for informational purposes and may not have been prepared for, or be suitable for legal, engineering, or surveying purposes. Users of this information should review sources to ascertain the usability of the information.