

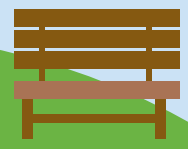
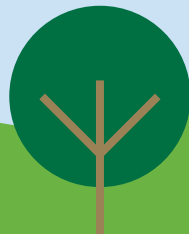
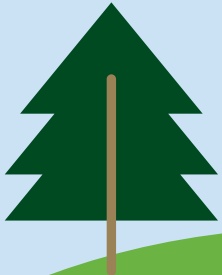


George Pierce Park

GYMNASIUM BY THE NUMBERS



George Pierce Park received a new \$3.2 million gymnasium with a full-sized basketball court and elevated indoor track. The basketball court will have two overlay courts for volleyball and badminton. The project was funded with SPLOST revenue.



6
basketball goals

63.7

laps required on elevated track to cover the same distance between George Pierce Park and Settles Bridge Park in Suwanee (4.9 miles)

George Pierce Park already features nine baseball-softball diamonds, five soccer fields, one football field, outdoor basketball courts plus miles of trails within the park that connect to the Suwanee Creek Greenway.



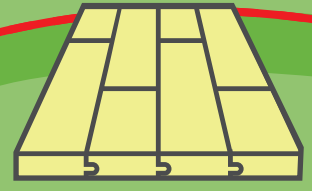
58
lockers



2
volleyball courts

\$3.38

MILLION
in SPLOST funds for gym construction



50,380

linear board feet of maple flooring

or **9.54** miles

George Pierce was an attorney, a businessman, and a philanthropist who helped incorporate the city of Suwanee in 1949 and served as mayor from 1951 to 1956.



2
badminton courts

18,212

square-foot gymnasium

304

total park acreage

