

**Recreation Authority Board****Thursday, December 14, 2023 – 2:00pm**Gwinnett Justice and Administration Center – Conference Room B  
75 Langley Drive, Lawrenceville, Georgia 30046**Present: Bruce Johnson, Rashida Wilson, Norman Carter, Sarah Overs, and Samia Abdulle**  
**Not present: Eric Thigpen, Brad Alexander, Kyle VanNus, and Pam Cox**

1. Call to Order
2. Temporary Meeting Chairperson  
Secretary Lindsey Jorstad called the meeting to order. Due to the absence of a Chair and Vice Chairperson, the Recreation Authority named Norman Carter to preside over the December 14 meeting.  
{Action: Approved; Motion: Johnson; Second: Abdulle; {Vote: (5-0) Carter-Yes; Wilson-Yes; Johnson-Yes; Overs-Yes; Abdulle-Yes}}
3. Welcome/Announcements
4. Approval of Agenda  
{Action: Approved; Motion: Johnson; Second: Overs; {Vote: (5-0) Carter-Yes; Wilson-Yes; Johnson-Yes; Overs-Yes; Abdulle-Yes}}
5. Approval of Minutes: October 26, 2023  
{Action: Approved; Motion: Johnson; Second: Abdulle; {Vote: (5-0) Carter-Yes; Wilson-Yes; Johnson-Yes; Overs-Yes; Abdulle-Yes}}
6. Project Administration Updates  
Division Director, Glenn Boorman, provided updates pertaining to Discovery Park, Singleton Park and Greenway, Ivy Creek Greenway from Goerge Pierce Park to Westbrook Road, Gwinnett Environmental and Heritage Center, Leanora Park, Eastern Regional Greenway Trail, Beaver Ruin Wetland Park, Piedmont Pathway Scoping Study, Bryson Park, Pathways through the Piedmont Exhibit, and other projects.
7. Parks and Recreation Operations Updates  
Division Director, Chris Minor, provided updates pertaining to the recently held Pickleball Listening Session, past holiday events, spotlight on West Gwinnett Park Aquatic Center, the division's Be All You Can Be award winner, Colleen Sloan, and upcoming 2024 initiatives.
8. Comments from Audience
9. Adjournment  
{Action: Approved; Motion: Johnson; Second: Wilson; {Vote: (5-0) Carter-Yes; Wilson-Yes; Johnson-Yes; Overs-Yes; Abdulle-Yes}}



# Project Administration



**December 14, 2023**

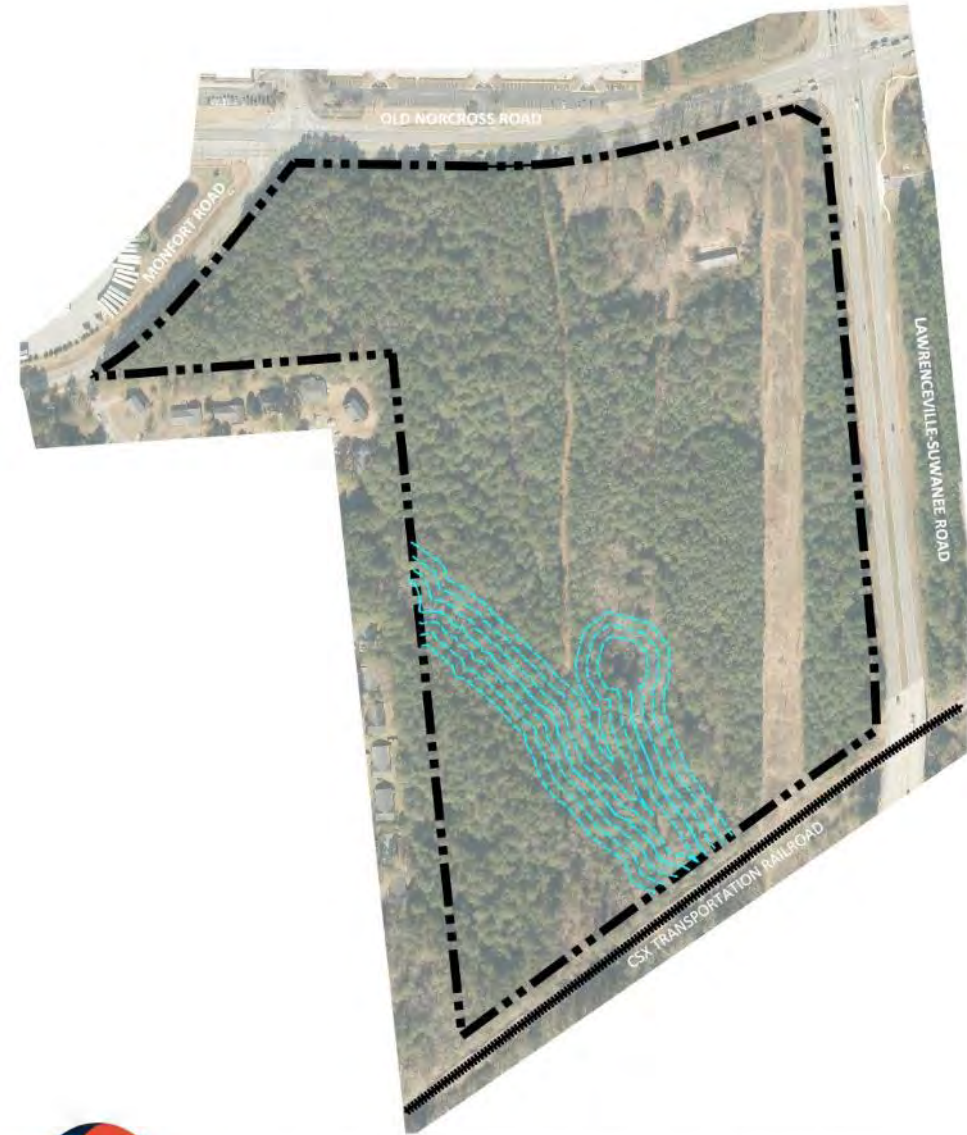
**Recreation Authority Board**



Discovery  
Area  
Community  
Park Site

- South of Old Norcross Road and west of Lawrenceville-Suwanee Road

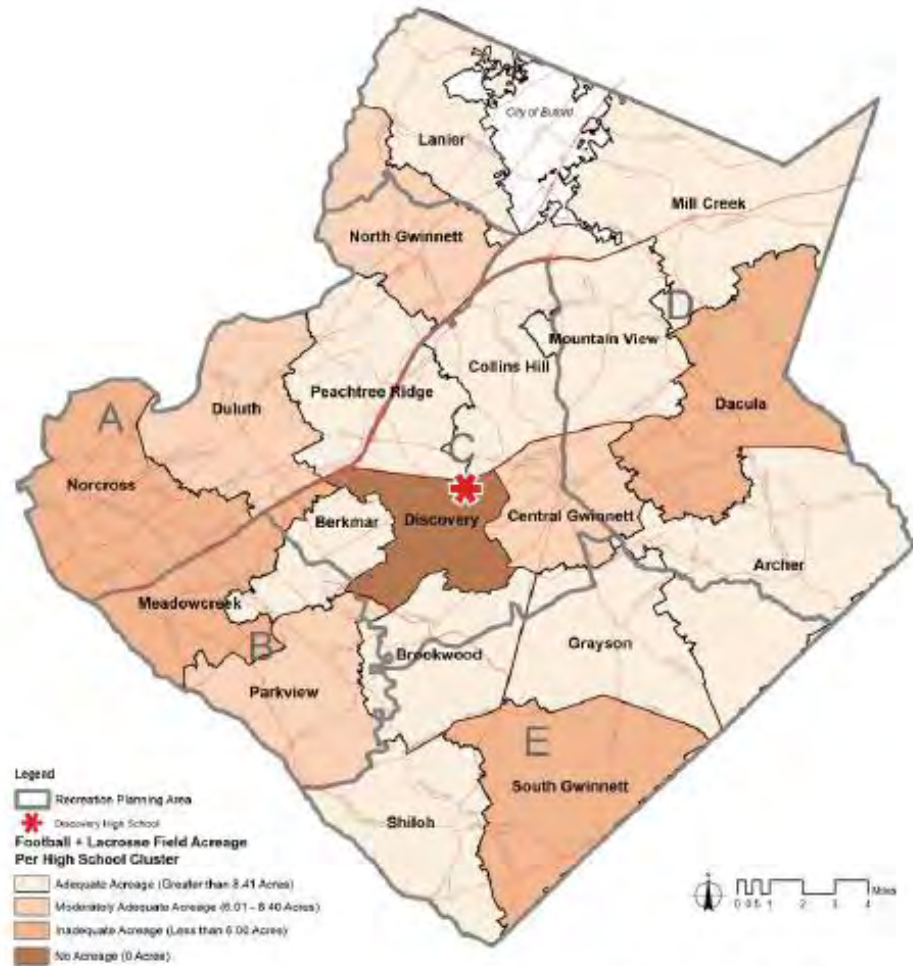
- 44.8 acres



HISTORICAL AERIAL PHOTOGRAPHY FROM 2016

# Proximity to Discovery High School





\*Note: Parkview High School Cluster is shown as Moderately Adequate due to overlay field issues in Mountain Park

# Gap Analysis

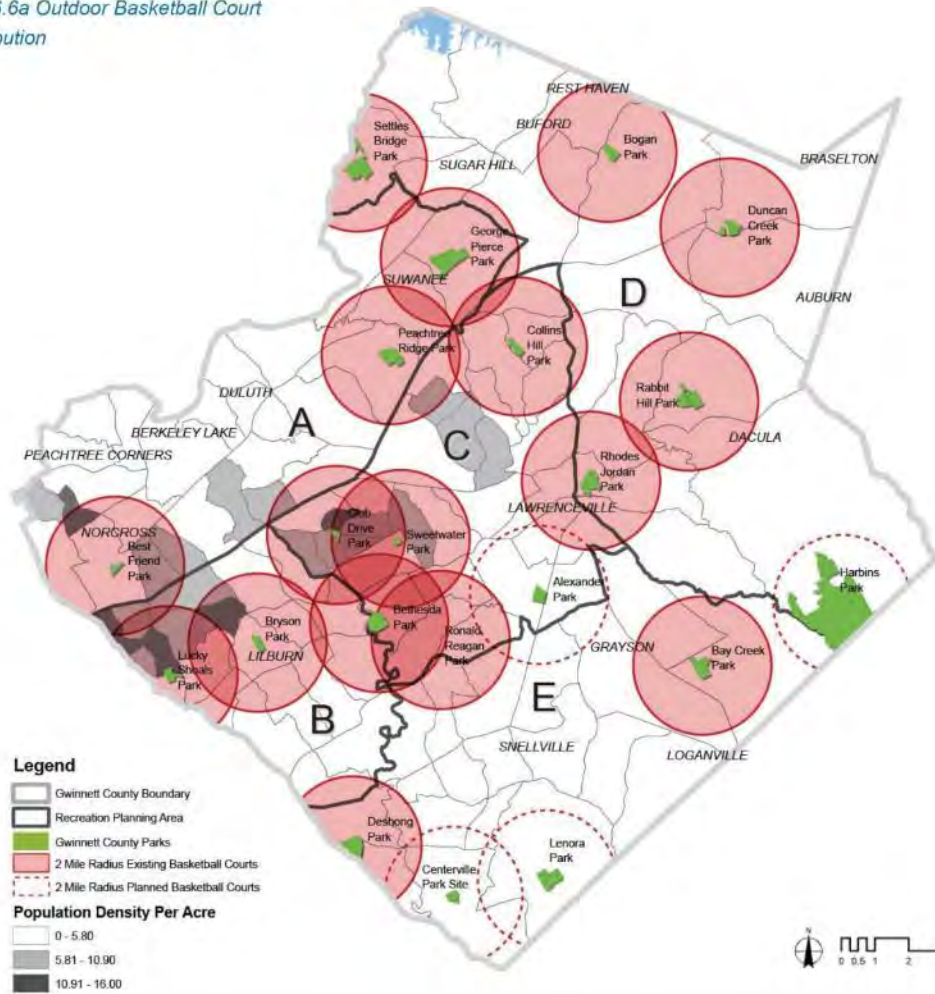
## Football / Lacrosse Youth Athletic Complexes

## 6.6 - Outdoor Basketball Court Analysis

Currently, Gwinnett County has 17 parks with outdoor basketball courts and four more planned. Map 6.6a illustrates their locations with a two-mile service radius around each. Because many of the basketball courts are located in RPA C, there is significant overlap in service areas. As a result, parts of RPA C are very

well-served with outdoor basketball courts, but many parts of Gwinnett County lack access, including much of RPAs A, D, and E.

Map 6.6a Outdoor Basketball Court Distribution



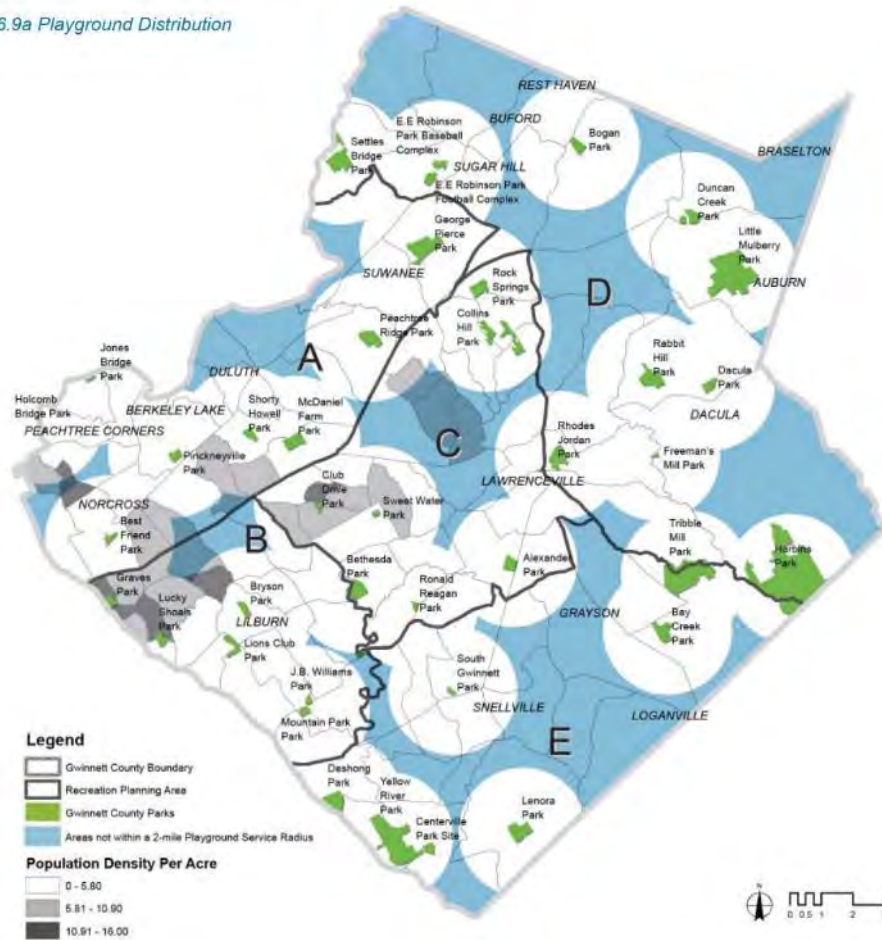
# Gap Analysis

## Outdoor Basketball Facilities

### 6.9 - Playground Analysis

Gwinnett County has 37 existing parks with playgrounds at its parks, shown in Map 6.9a. For each of these parks, a two-mile service area was mapped to determine gaps in service. Although these 36 parks with playgrounds are distributed throughout the County, significant gaps in access occur in central RPA C, multiple areas of RPA D, and over half of RPA E.

Map 6.9a Playground Distribution



# Gap Analysis

## Playground Facilities



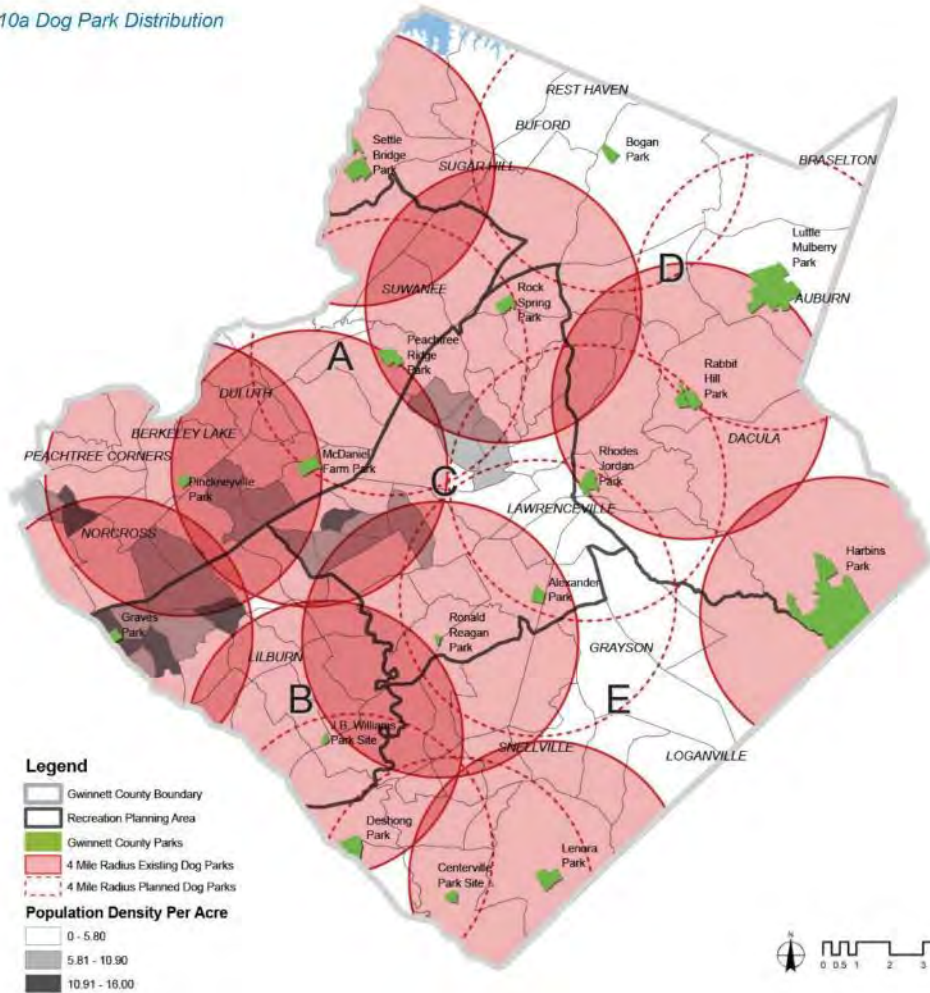


## 6.10 - Dog Park Analysis

Dog parks are an increasingly popular facility at parks across the nation. Currently, Gwinnett County has 10 dog parks and another seven planned. Map 6.10a illustrates the locations, along with a four-mile service area for each. Once the planned facilities are in place, almost all of Gwinnett County will have access to a

dog park facility, with the exception of the area around Loganville in RPA E and a few smaller sections of RPA D.

Map 6.10a Dog Park Distribution



# Gap Analysis

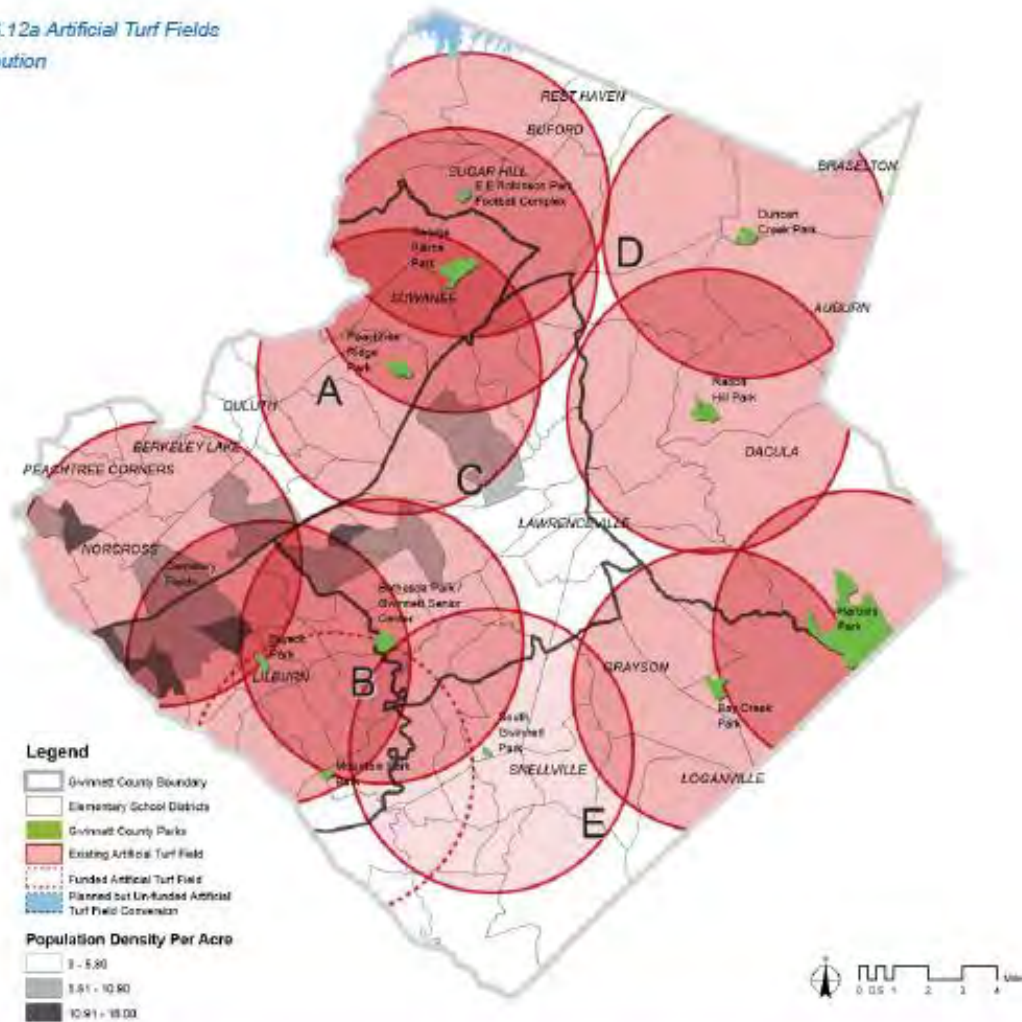
## Dog Parks

## 6.12 - Artificial Turf Field Analysis

Fields with artificial turf are an important active recreation facility in Gwinnett County. Currently there are 11 artificial turf fields in the county and another one planned. Map 6.12a illustrates their locations. Although approximately three-quarters of the County will have good or excellent access once the proposed facility in

RPA B is completed, gaps in provision will still exist in RPA C (around Lawrenceville) and the southern portion of RPA E.

Map 6.12a Artificial Turf Fields Distribution

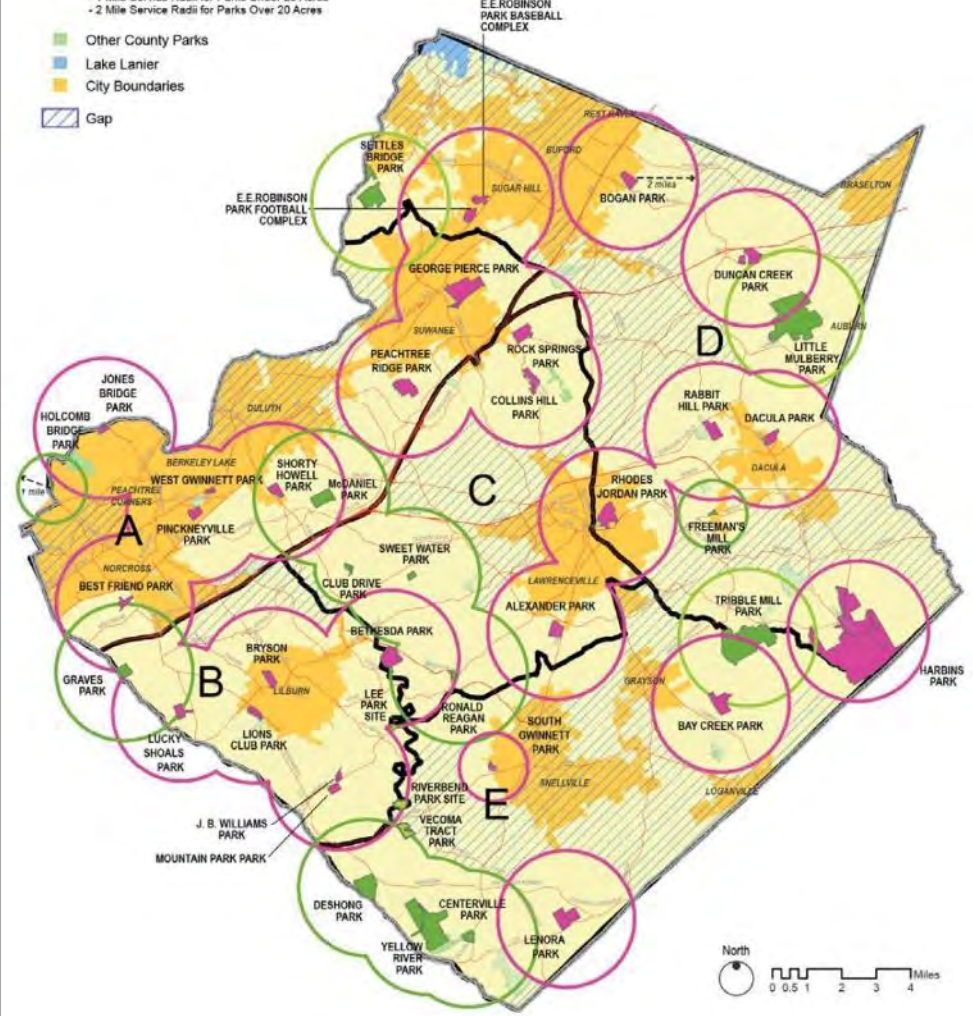


# Gap Analysis

## Synthetic Turf Multipurpose Fields

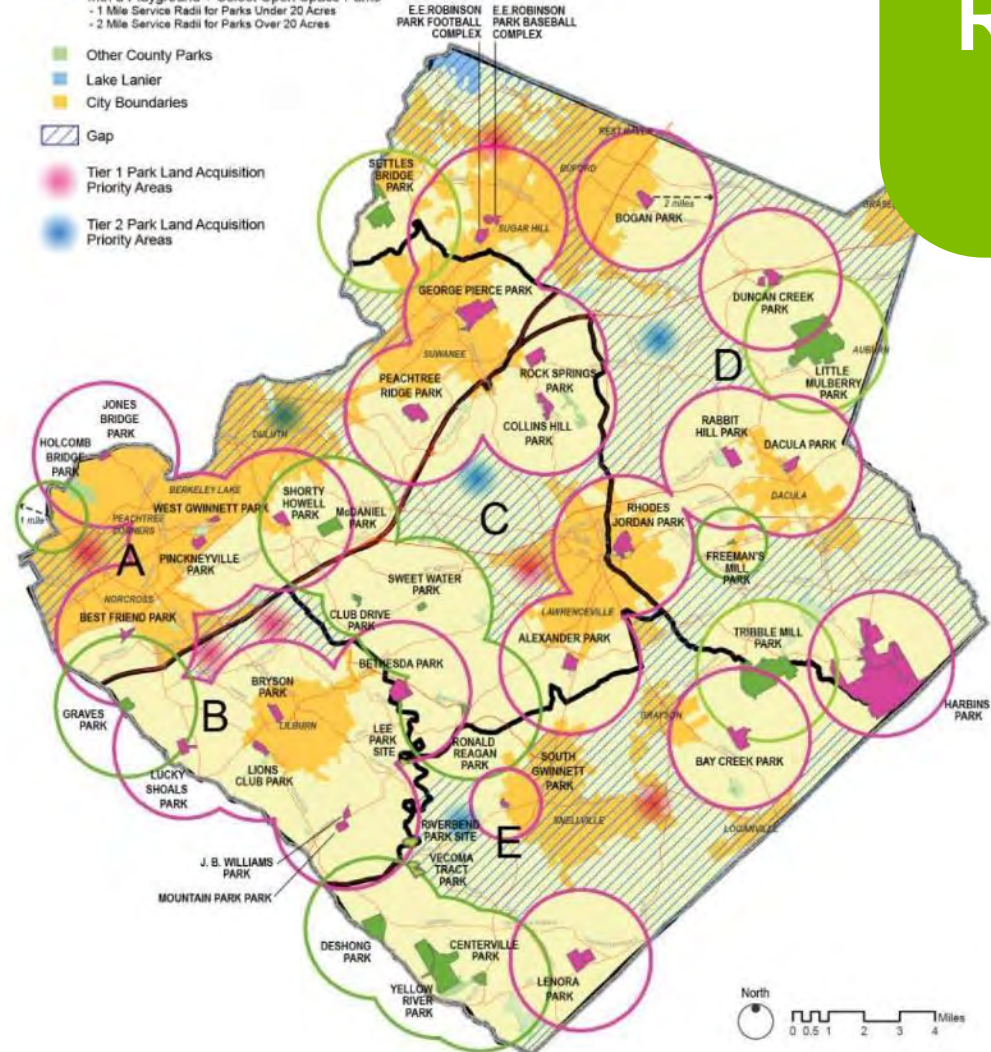
Map 5.6a Gap Analysis for General Recreation Acreage

-  General Recreation in Existing County Community Parks, Currently **Open** to the Public with a Playground
  - 1 Mile Service Radii for General Recreation Acreage Under 20 Acres
  - 2 Mile Service Radii for General Recreation Acreage Over 20 Acres
-  General Recreation in Existing County Passive Community Parks + Special Purpose Neighborhood Parks Currently **Open** to the Public with a Playground + Select Open Space Parks
  - 1 Mile Service Radii for Parks Under 20 Acres
  - 2 Mile Service Radii for Parks Over 20 Acres
-  Other County Parks
-  Lake Lanier
-  City Boundaries
-  Gap



Legend

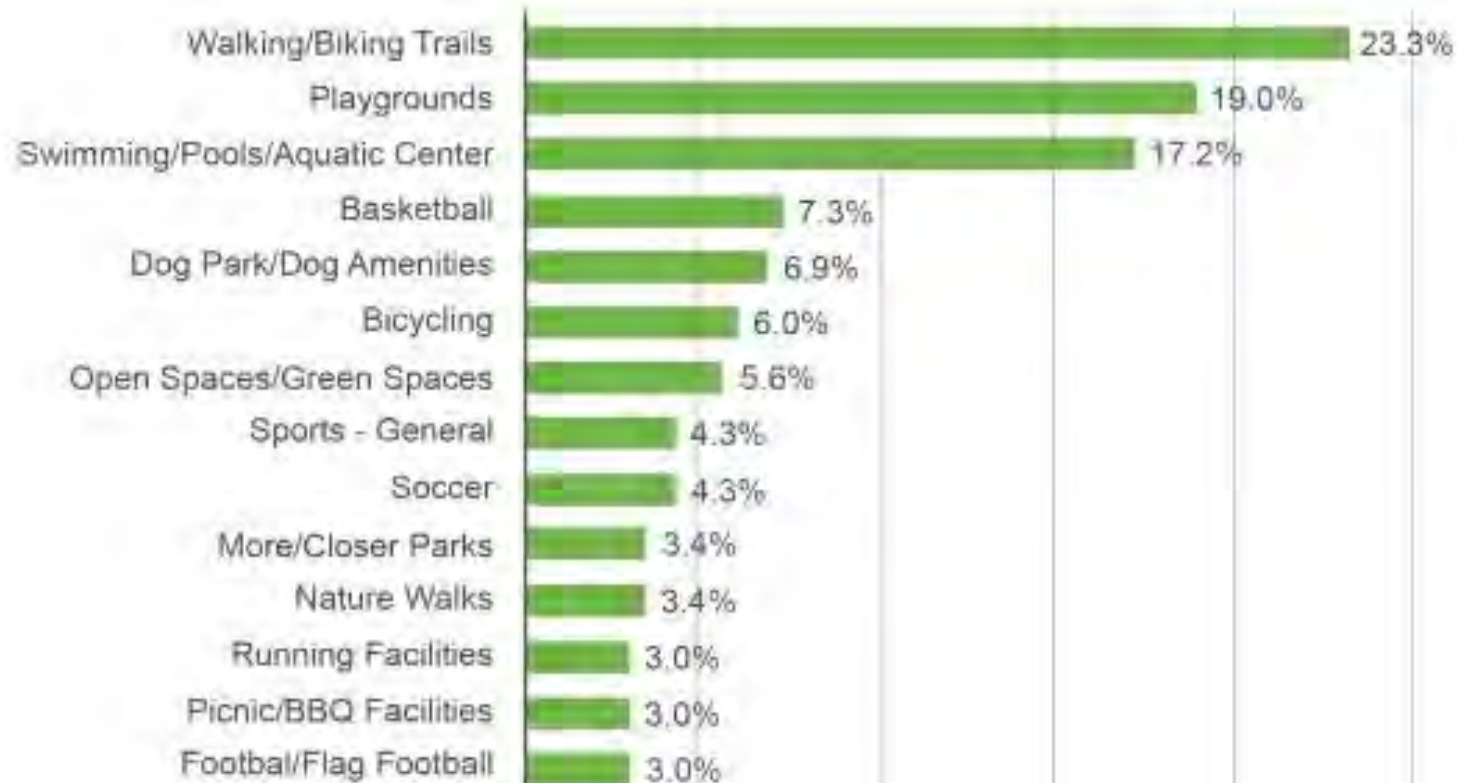
-  Recreation Planning Area
-  General Recreation in Existing County Community Parks, Currently **Open** to the Public with a Playground
  - 1 Mile Service Radii for General Recreation Acreage Under 20 Acres
  - 2 Mile Service Radii for General Recreation Acreage Over 20 Acres
-  General Recreation in Existing County Passive Community Parks + Special Purpose Neighborhood Parks Currently **Open** to the Public with a Playground + Select Open Space Parks
  - 1 Mile Service Radii for Parks Under 20 Acres
  - 2 Mile Service Radii for Parks Over 20 Acres
-  Other County Parks
-  Lake Lanier
-  City Boundaries
-  Gap
-  Tier 1 Park Land Acquisition Priority Areas
-  Tier 2 Park Land Acquisition Priority Areas



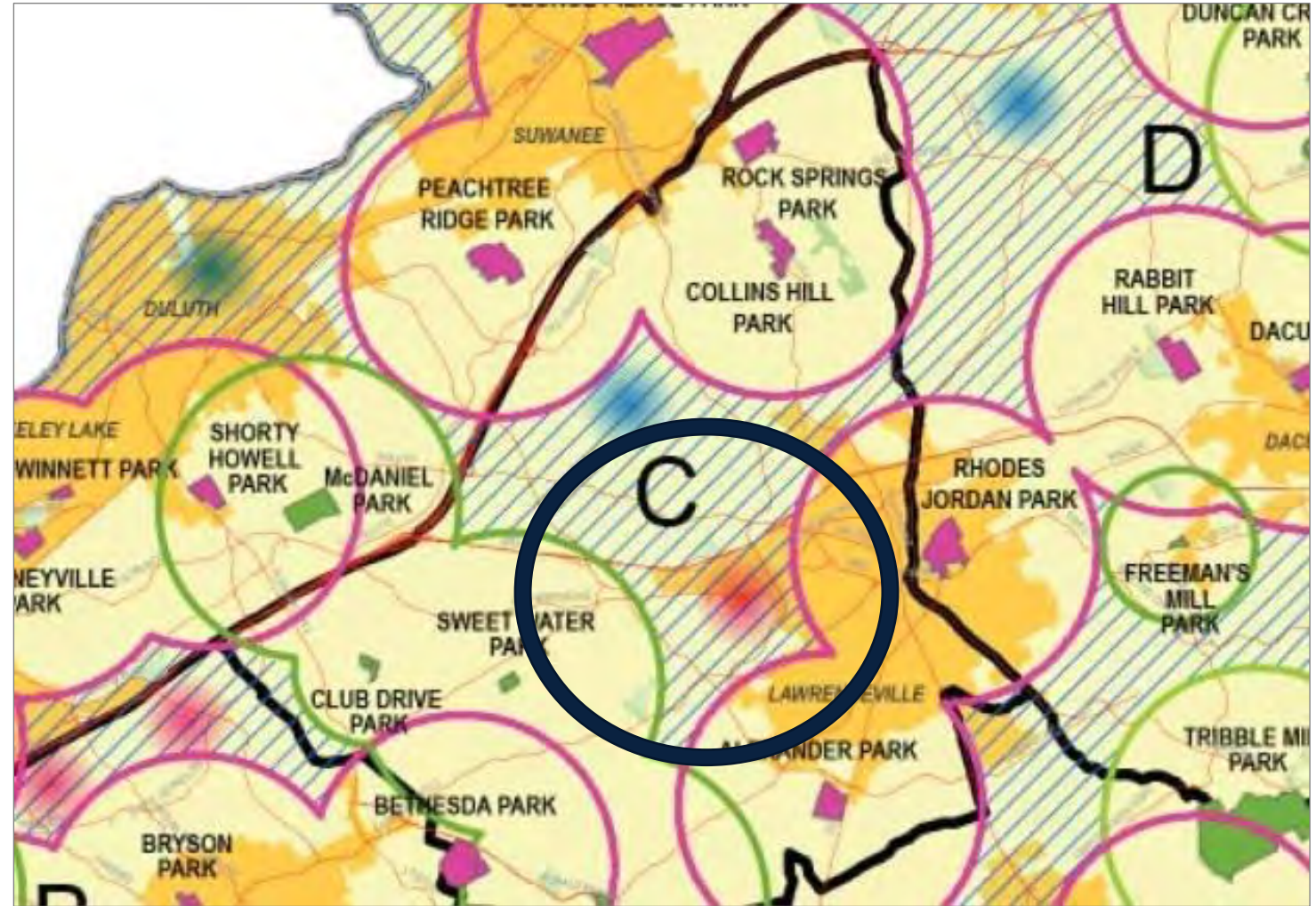
# General Recreation

# Recreation Preference Survey

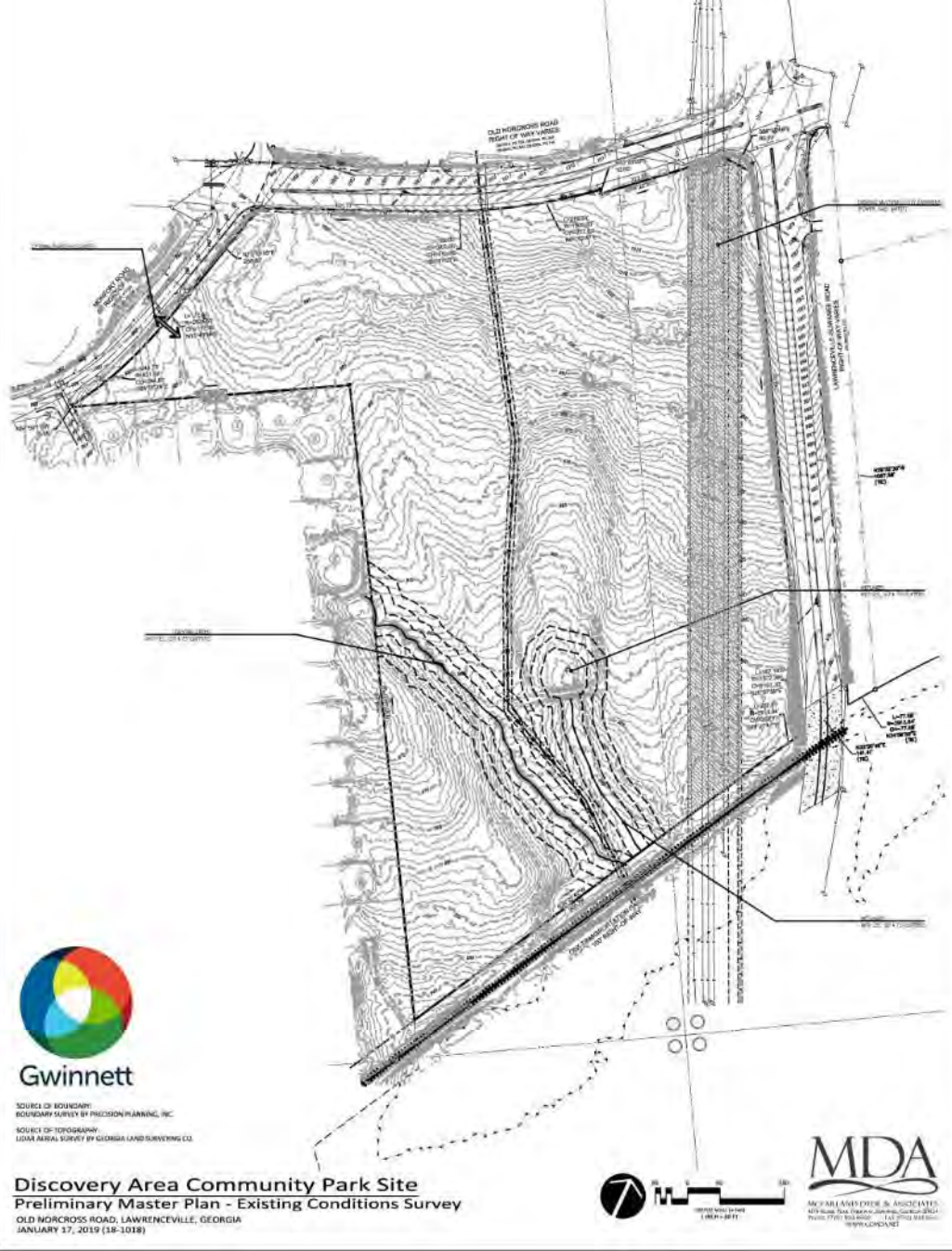
**What Types of Recreation Resources Would Respondent Like to See in Their Areas?**  
(For Those Who Said Their Area Needs More Recreational Facilities)



Purchase of a Community Park site for this area was the **number one** park land purchase recommendation of the consultant and Recreation Authority



# EXISTING CONDITIONS SURVEY



SOURCE OF BOUNDARY  
BOUNDARY SURVEY BY PROVISION PLANNING, INC.  
SOURCE OF TOPOGRAPHY  
LIDAR AERIAL SURVEY BY GEORGIA LAND SURVEYING CO.

**Discovery Area Community Park Site**  
**Preliminary Master Plan - Existing Conditions Survey**  
OLD NORCROSS ROAD, LAWRENCEVILLE, GEORGIA  
JANUARY 17, 2019 (18-1018)



MDA  
MAYNARD AND ASSOCIATES  
415 North Dixie Avenue, Lawrenceville, Georgia 30046  
Phone: (770) 962-8800 • Fax: (770) 962-8801  
www.mda.net

# HISTORICAL AERIAL - 1955



HISTORICAL AERIAL PHOTOGRAPHY FROM 1955

Discovery Area Community Park Site  
Master Planning Phase - Historical Aerial Photography  
OLD NORCROSS ROAD, LAWRENCEVILLE, GEORGIA  
JANUARY 11, 2019 (19-018)



# HISTORICAL AERIAL - 1972



Gwinnett

HISTORICAL AERIAL PHOTOGRAPHY FROM 1972

Discovery Area Community Park Site  
Master Planning Phase - Historical Aerial Photography  
OLD NORCROSS ROAD, LAWRENCEVILLE, GEORGIA  
January 20, 2014 (04-1014)



**MDA**  
McFarland & Associates  
4815 Old Peachtree Dunwoody, Georgia 30090  
Phone: (770) 433-0000 Fax: (770) 952-4555  
www.mda.net



# HISTORICAL AERIAL - 2016



HISTORICAL AERIAL PHOTOGRAPHY FROM 2016

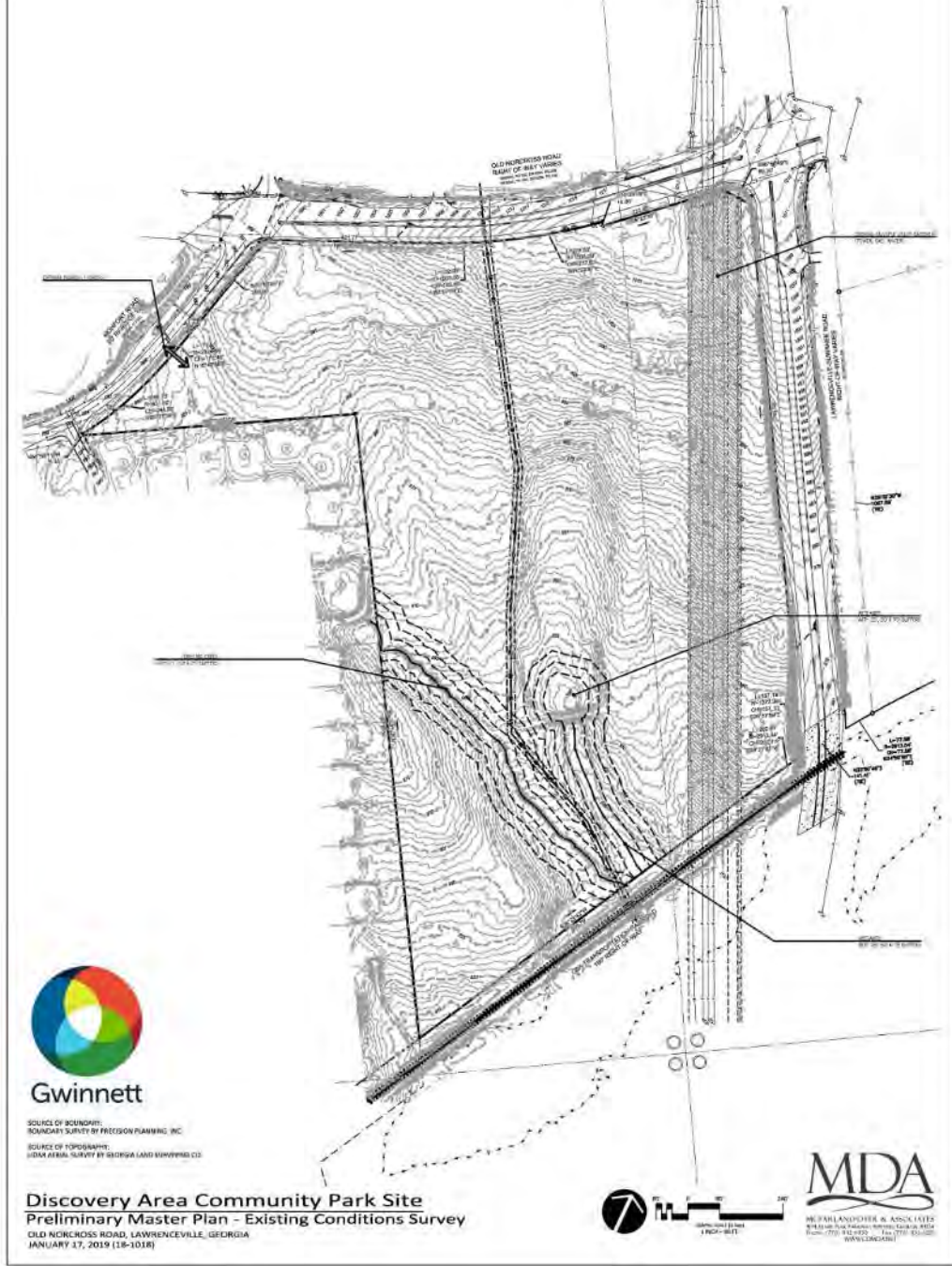


Gwinnett

DISCOVERY AREA COMMUNITY PARK SITE  
Preliminary Master Plan - Current Conditions Aerial Photography  
OLD NORCROSS ROAD, LAWRENCEVILLE, GEORGIA  
JANUARY 17, 2019 (18-1018)



# EXISTING CONDITIONS SURVEY



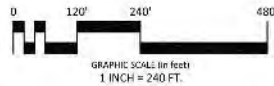
SOURCE OF BOUNDARY:  
BOUNDARY SURVEY BY FREDSON PLANNING, INC.

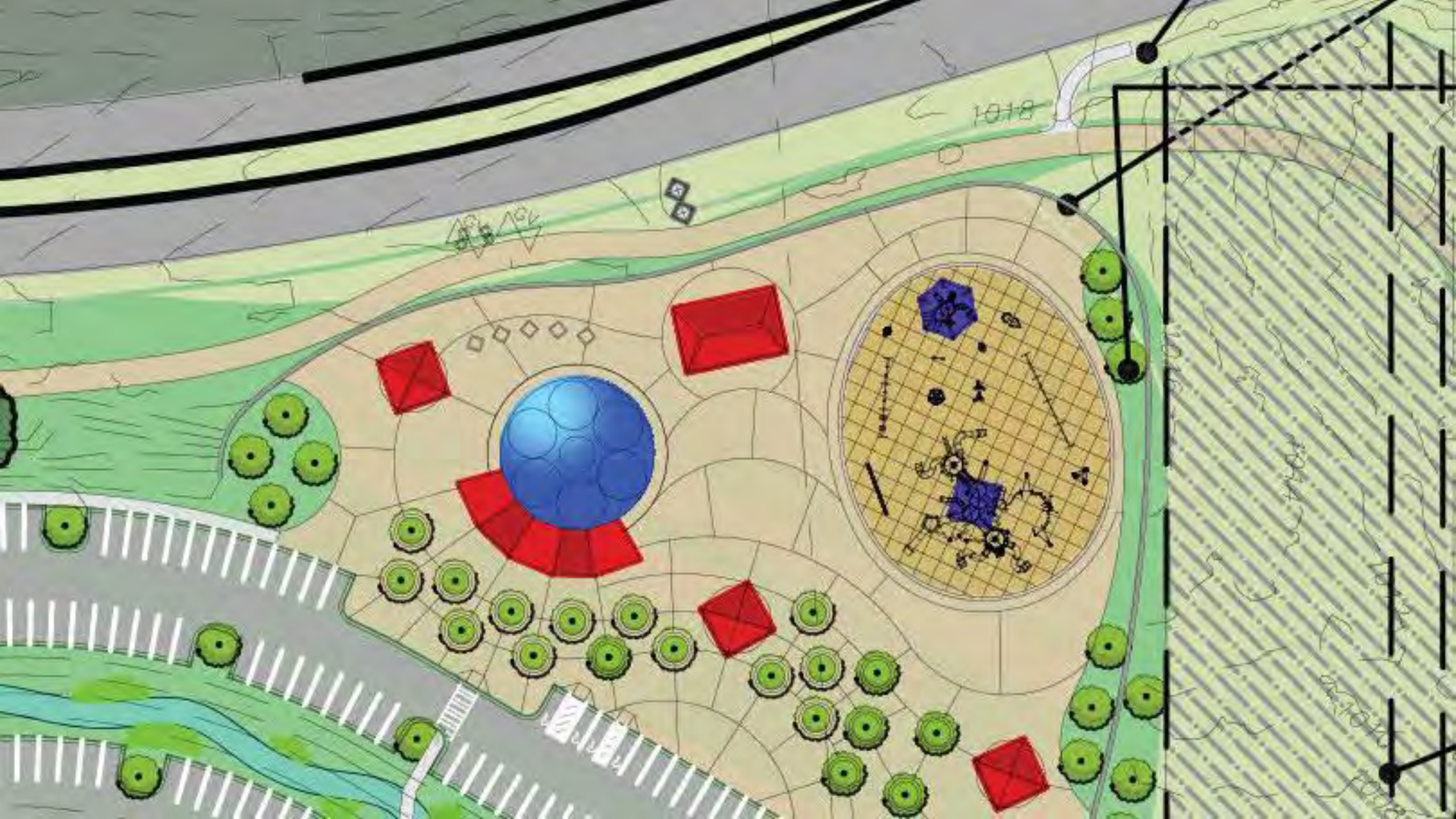
SOURCE OF TOPOGRAPHY:  
SDMA AERIAL SURVEY BY GEORGIA LAND SURVEYING CO.

**Discovery Area Community Park Site**  
**Preliminary Master Plan - Existing Conditions Survey**  
OLD NICKCROSS ROAD, LAWRENCEVILLE, GEORGIA  
JANUARY 17, 2019 (18-1018)



MR. FARLAND DODD & ASSOCIATES  
814 W. BUCKLE ROAD, SUITE 100, LAWRENCEVILLE, GA 30046  
Phone: (770) 962-2222 Fax: (770) 962-2222  
WWW.MDA.COM







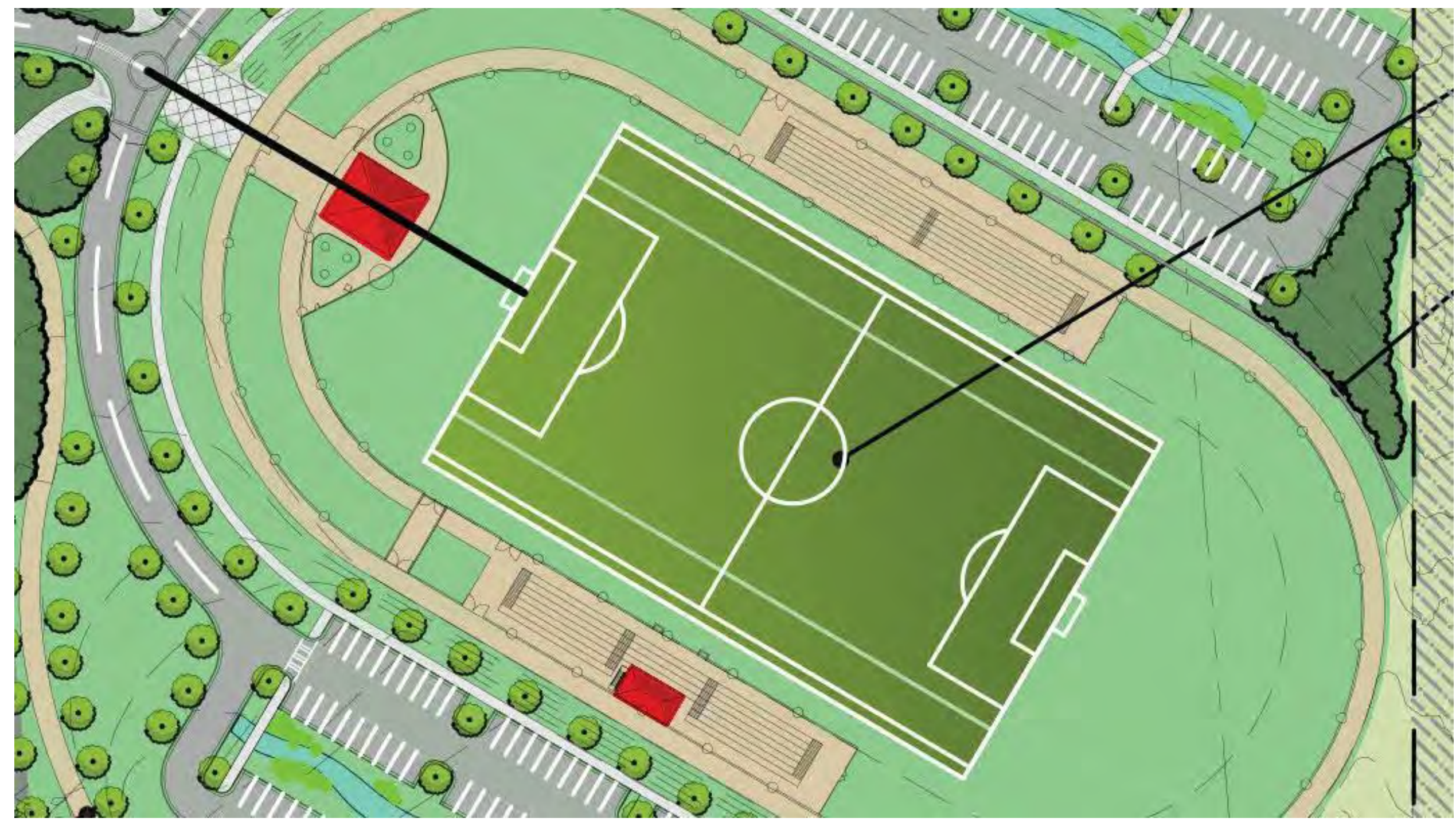


ncy  
e  
at  
ter

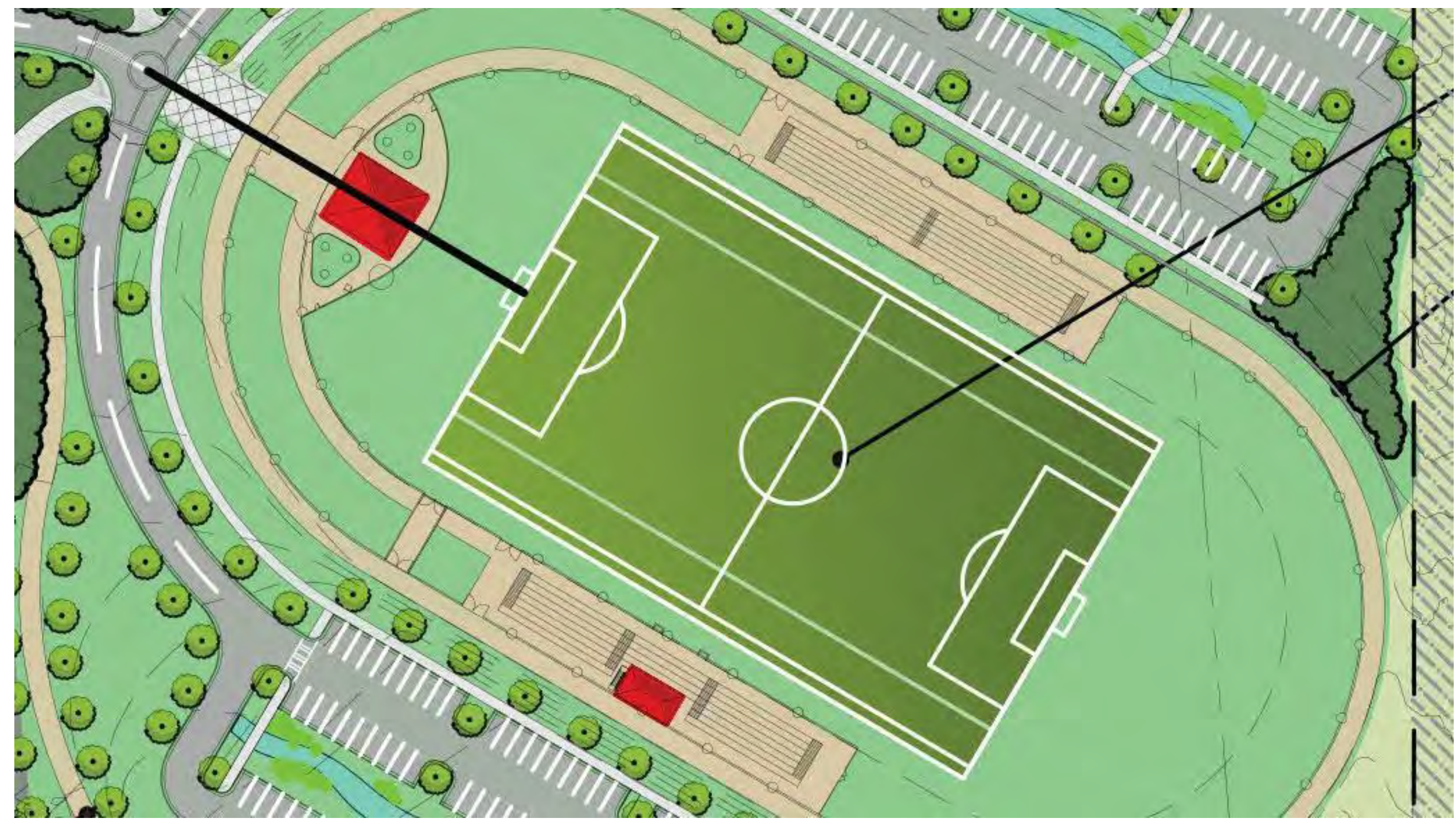
OLIVA  
13

SPORT ROAD











Gwinnett

# Future site of Singleton Park and Singleton Greenway Trailhead

CONCEPTUAL PLAN SUBJECT TO CHANGE



FUNDED BY  
**YOUR TAX  
DOLLARS**

**MDA**  
MCFARLAND-DYER & ASSOCIATES

**COMING SOON!**



# IVY CREEK GREENWAY TRAILHEAD

*Coming  
Soon*

Ivy Creek Greenway section connecting George Pierce Park to a trailhead at Westbrook Road.



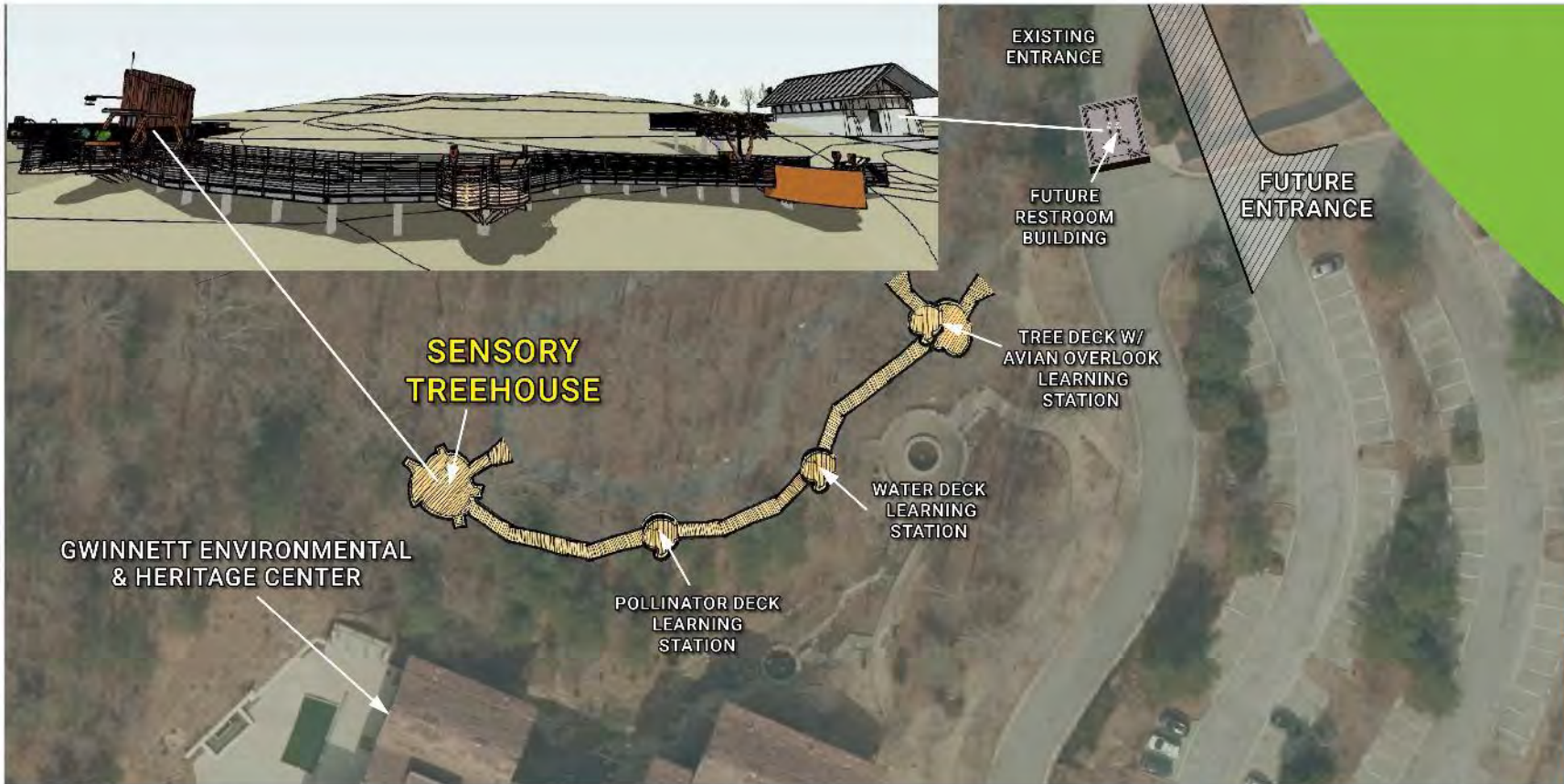
**SPLOST**

**YOUR SALES TAX DOLLARS AT WORK**



Gwinnett

# ENVIRONMENTAL & HERITAGE CENTER SENSORY TREEHOUSE



Coming  
Soon

SPLOST

YOUR SALES TAX DOLLARS AT WORK







# LENORA PARK MULTIPURPOSE FIELD RENOVATION

*Coming Soon*



YOUR **SALES TAX DOLLARS** AT WORK



GUEST  
TIME-OUTS  
DOWN TO GO BALL





GUEST HOME  
TIME-OUTS  
DOWN TO GO BALL ON QTR.







# Eastern Region Infrastructure Project

**Eastern Regional Greenway**









Gwinnett

# BEAVER RUIN WETLAND PARK



Coming  
Soon



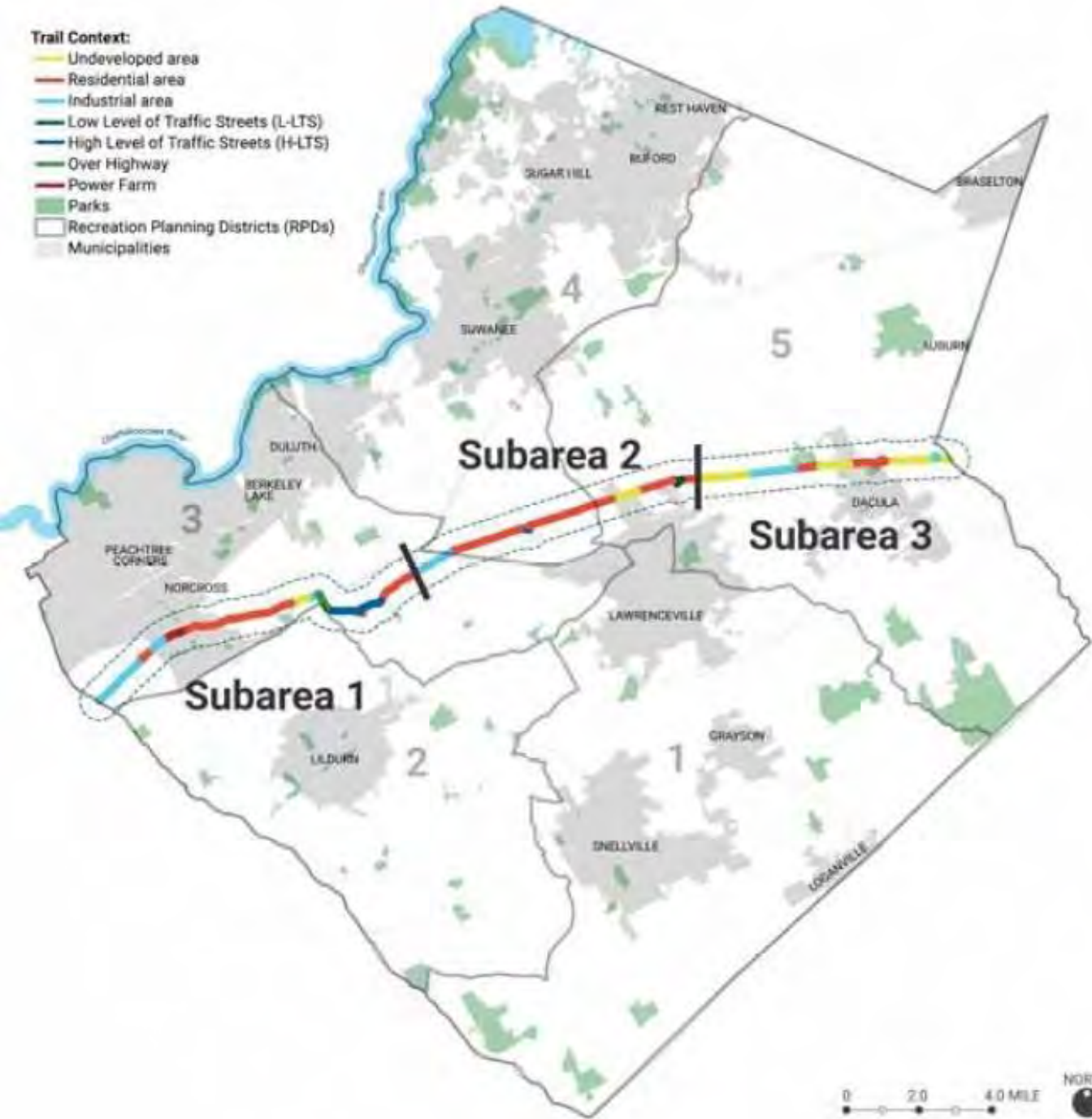
TETRA TECH





**Trail Context:**

- Undeveloped area
- Residential area
- Industrial area
- Low Level of Traffic Streets (L-LTS)
- High Level of Traffic Streets (H-LTS)
- Over Highway
- Power Farm
- Parks
- Recreation Planning Districts (RPDs)
- Municipalities



# Piedmont Pathway Scoping Study

- Study the feasibility of trail alternatives
- Develop a safe, connected, multimodal, cost-effective solution that leverages implementation opportunities and achieves multiple benefits
- Be a model for trail development in Gwinnett





# LENORA PARK ADDITIONS AND RENOVATIONS

*Coming Soon*

New Community Recreation Center and outdoor basketball court, plus renovations to the gym and parking lot.



YOUR **SALES TAX DOLLARS** AT WORK

# Bryson Park

## New Entrance Project with City of Lilburn

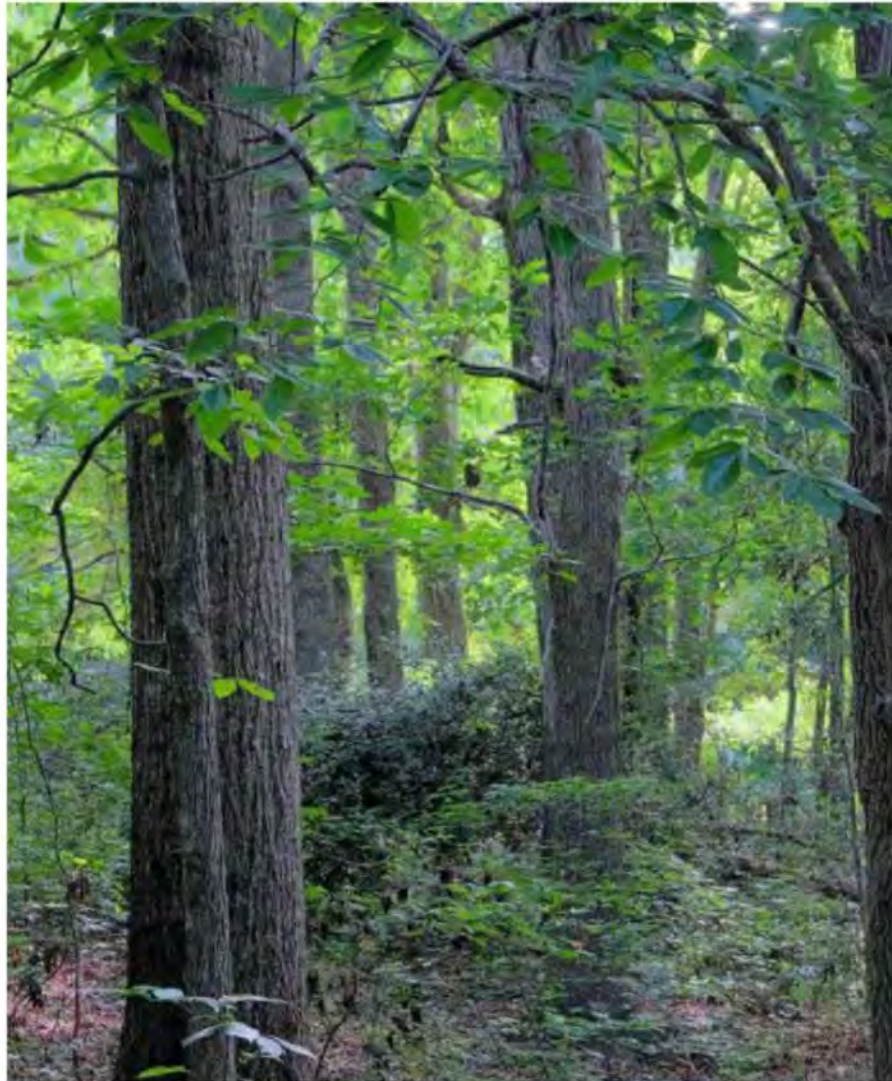


# PATHWAYS THROUGH THE PIEDMONT

## Outdoor Adventures in Gwinnett

100% DESIGN DETAIL DRAWINGS

DATE: OCTOBER 16, 2023



### DRAWING INDEX

#### PIEDMONT EXHIBIT OVERVIEW

- 0.0.1 Drawing Notes
- 0.0.2 Finish Schedule
- 0.0.3 Coordination Plan
- 0.0.4 Wall Paint Plan
- 0.0.5 Flooring Plan
- 0.0.6 3.0 Flooring Details
- 0.0.7 5.0 Flooring Details

#### 0.1.1 Floorplan Room A

#### 0.1.2 Floorplan Room B

#### 0.2.0 Reflected Ceiling Plan

#### LS1.0 Tanks and Life Support Coordination

#### EA1 INTRODUCTION AREA

##### 1.1.0 Intro to Pathways Through the Piedmont

#### EA2 WATERWAYS IN GWINNETT

##### 2.1.0 Intro to Waterways

##### 2.1.3 Benefits of Waterways

##### 2.1.5 Protecting Our Watershed

##### 2.4.0 Rivers and Creeks

##### 2.5.0 Lake Life

##### 2.6.0 Beavers: Nature's Engineers

##### 2.7.0 Programming Space

#### EA3 FORESTS IN GWINNETT

##### 3.1.0 Intro to Forests

##### 3.2.0 Layers of a Forest

##### 3.3.0 Forest Wildlife

##### 3.4.0 Forest Plants

##### 3.5.0 Under the Forest

##### 3.6.0A Trees in Gwinnett

##### 3.7.0 Rocks in Gwinnett

##### 3.8.0 American Chestnut Tree

#### EA4 MEADOWS & OPEN SPACES IN GWINNETT

##### 4.2.0 Meadow Habitat Overview

##### 4.3.0 Meadows, Plants, Roots, and Soil

##### 4.4.0 Preserving Species Open Spaces

#### EA5 GRANITE OUTCROPS IN GWINNETT

##### 5.1.0 Introduction to Granite Outcrops

##### 5.2.0 Granite Outcrop Habitat

##### 5.3.0 People and Granite Outcrops

#### ATTACHMENTS

##### Scope Delineation Matrix

##### Prototypes and Sample Matrix

##### Prop and Model Matrix

##### Tanks Matrix

##### Graphics Matrix

##### Site Photos

##### MEP Drawings

luci  
CREATIVE

300 S. GUYTON PARKWAY  
LAWRENCEVILLE, GA 30046  
CLUBFIT

GWINNETT ENVIRONMENTAL  
LIFE SUPPORT SYSTEMS  
AND VISUAL IMPACT ON  
SURVEY 001.0000

EXHIBIT 1.000

PC	JK
PE	SM
DATE:	JF
ISSUE NO:	JF
PROJECT:	000

100%  
DESIGN  
DETAIL  
DRAWINGS

INDEX

DRAWING INDEX

0.0.0

# Other Project Updates

- Bay Creek Park: Multi-purpose field synthetic turf replacement
- Bogan Park Aquatic Center: Play structure replacement
- George Pierce Park:
  - Multi-purpose field synthetic turf replacement
  - Playground replacement at baseball/softball
- Gwinnett Environmental and Heritage Center:
  - Front entrance realignment re-bid
  - Roof redesign
  - Outdoor classroom and restroom
- Gwinnett Trails Master Plan Update
- Lenora Park: Maintenance building addition
- Promised Land: The Livsey Family Big House restoration planning
- Vines Park- phase two additions



# Questions?

**December 14, 2023**

**Recreation Authority Board**



# Parks and Recreation

Recreation Authority Board  
December 14, 2023



# Pickleball Listening Session

- November 30
- Pickleball Ambassadors
- Varied representation



# Events

- Lighting of the Tree
- Senior Holiday Luncheon
- Santa Events
- Holiday Markets



# Spotlight: West Gwinnett Park Aquatic Center

- State Champion Water Polo Team
- Underwater Hockey
- South Korean Paralympians



# Awards

- Be All You Can Be: Colleen Sloan
  - Program Supervisor
  - Aquatics background
  - Adaptable



# 2024

- BOC Briefing in January
- Year End update in February
- National Recreation Park Association Conference
- Gold Medal
- Elections





# See You in 2024!

[GwinnettParks.com](https://GwinnettParks.com)  
[@GwinnettParksandRec](https://@GwinnettParksandRec)

