



GWINNETT COUNTY
BOARD OF COMMISSIONERS

75 Langley Drive | Lawrenceville, GA 30046-6935

(O) 770.822.7000 | (F) 770.822.7097

www.gwinnettcountry.com

Charlotte J. Nash, Chairman

Jace W. Brooks, District 1

Ben Ku, District 2

Tommy Hunter, District 3

Marlene M. Fosque, District 4

Official

Informal Briefing Minutes

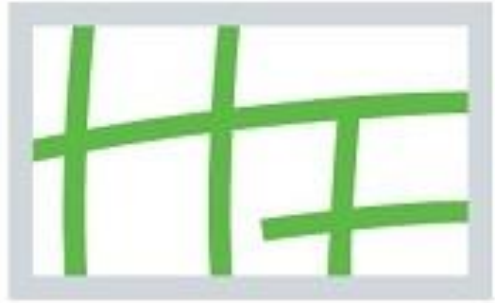
Tuesday, February 18, 2020 – 10:30 AM

Present: Charlotte J. Nash, Jace Brooks, Ben Ku, Tommy Hunter, Marlene M. Fosque

1. Financial Services

HomeFirst Gwinnett Initiative

HomeFirst Gwinnett Director Matt Elder provided an update on services and initiatives of the organization. No official action taken.

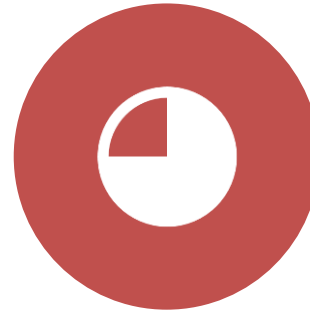


HomeFirst

— GWINNETT —

Matthew Elder, Director

Accomplishments



2019 & 2020 POINT-
IN-TIME COUNT



COMMUNITY
PARTNERSHIPS



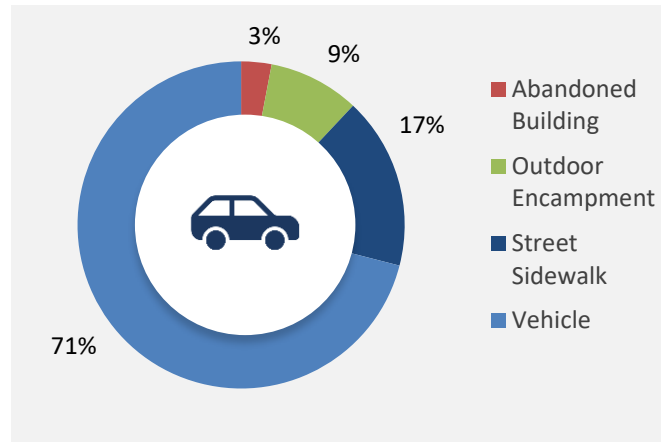
NORCROSS
ASSESSMENT CENTER



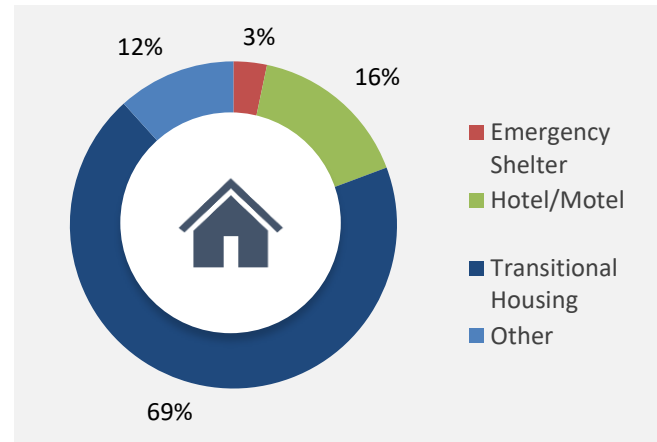
COORDINATED ENTRY
SYSTEM

2019 PIT Count Results

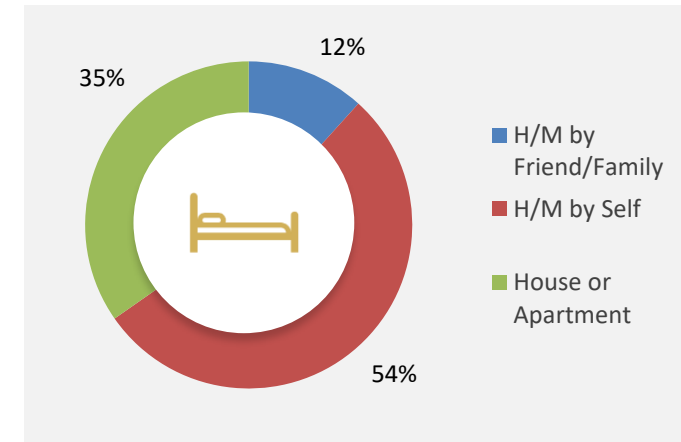
Unsheltered Homeless



Sheltered Homeless



Precariously Housed



Unsheltered Homeless

118 Persons

- 4th in State of Georgia
- Average Age: 42 Years Old
- HH Size: 2.1 People
- Gender: Female (50%)
- Race: African American (67%)
- Substance Abuse: 17%
- Chronic Health: 33%
- Mental Illness: 36%
- Physical Disability: 34%

Sheltered Homeless

164 Persons

- 3rd in State of Georgia
- Average Age: 39 Years Old
- HH Size: 2.8 People
- Gender: Female (62%)
- Race: African American (53%)
- Substance Abuse: 25%
- Chronic Health: 23%
- Mental Illness: 16%
- Physical Disability: 14%

Total Homeless

282 Persons

- 2nd in State of Georgia
- Average Age: 40 Years Old
- HH Size: 2.6 People
- Gender: Female (57%)
- Race: African American (59%)
- Substance Abuse: 22%
- Chronic Health: 27%
- Mental Illness: 24%
- Physical Disability: 22%

Precariously Housed

453 Persons

- **First year data was collected*
- Average Age: 39 Years Old
- HH Size: 2.7 People
- Gender: Female (57%)
- Race: African American (55%)
- Substance Abuse: 6%
- Chronic Health: 24%
- Mental Illness: 19%
- Physical Disability: 10%



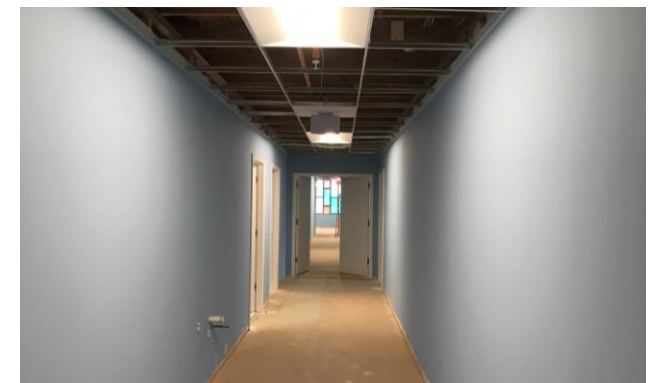
Community Partnerships

- March 2019 Breakthrough Event was attended by more than 300 people
- 80+ Community partnerships that include Public, Private, Non-Profit and Faith-Based
- Notable partners include Gwinnett County Board of Commissioners, The Primerica Foundation, Gwinnett Coalition for Health and Human Services, Gwinnett Chamber of Commerce & Georgia Department of Community Affairs



Norcross Assessment Center Renovations

- Interior Renovations nearly complete
- All new drywall, flooring, paint, lighting, HVAC and electrical systems
- Next: Furnishings and Staffing
- Opening in March 2020



Coordinated Entry System Services



Housing



Healthcare



Food



Clothing



Transportation



Employment



Hygiene

Financial Snapshot



Revenue - \$1,893,087



Expenditures - \$1,050,584

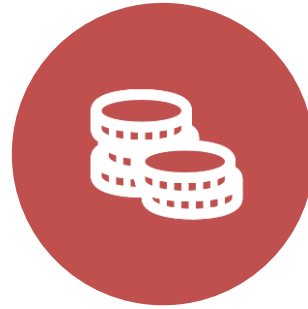


Match Ratio: \$1:\$0.89



Leveraged Funding - \$5,000,000 (*City of Lawrenceville*)

Fundraising



HIRE FUNDRAISING
CONSULTANT



\$12 MILLION
CAMPAIGN



CAMPAIGN LAUNCH
SUMMER 2020

2020 Funding Request

HomeFirst Gwinnett requesting the Gwinnett County Board of Commissioners consider an award to accomplish the following items



HomeFirst Gwinnett Administration



Norcross Assessment Center Operations

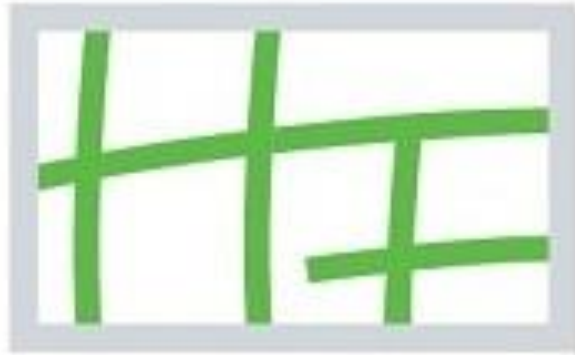


Capacity Expansion




Affordable Housing Study

HomeFirst Gwinnett Administration



Overview: On January 1, 2020 HomeFirst Gwinnett, LLC began formal operations. United Way of Greater Atlanta still serves as the fiscal sponsor providing some administrative services.

Activity: Provide operational funding to cover organizational marketing, insurance, fundraising and administration salary.



Norcross Assessment Center Operations – Coordinated Entry System

Overview: To provide staffing and support to fully operate Gwinnett's Coordinated Entry System

Activity: Hire five full-time staff to administer and operate the new system.

Norcross Assessment Center Operations - Shelter

Overview: Enter into a cooperative shelter operation agreement with partner non-profit.

Activity: Hire three full-time staff for the 20-bed shelter for women and children.



Capacity Expansion

Partnership Expansion

- **Overview:** Once system is operational a gap analysis can be completed to measure the level of need v. system capacity to provide service
- **Action Item:** Provide funding to partner non-profits to increase capacity and fill gap

Human Services Data System

- **Overview:** Development of a new data system that will allow for better integration of data sharing across multiple platforms
- **Action Item:** Identify consultant and begin building out custom data platform

Affordable Housing Study

Purpose: Commission study to focus on affordable housing demand, needs and strategies.



Focus Areas:

Number of Units Needed

Price Points

Geographical Needs

Property Evaluation



This will work in supplement to the County's Comprehensive Housing Study. The intent is to leverage the housing inventory data and zoning and development code analysis that will be conducted.



Questions?

