



GWINNETT COUNTY
BOARD OF COMMISSIONERS

75 Langley Drive | Lawrenceville, GA 30046-6935
(O) 770.822.7000 | (F) 770.822.7097
www.gwinnettcounty.com

Charlotte J. Nash, Chairman
Jace W. Brooks, District 1
Ben Ku, District 2
Tommy Hunter, District 3
Marlene M. Fosque, District 4

Official

Special Called Meeting Minutes

Tuesday, May 12, 2020 – 10:30 AM

Present: Charlotte J. Nash, Jace Brooks, Marlene M. Fosque

Via teleconference: Ben Ku

Absent: Tommy Hunter

1. COVID-19 Updates and Related Topics

Community Services Deputy Director Lindsey Jorstad provided an overview of emergency food assistance and other needs being met collaboratively with community partners for all ages in Gwinnett during the COVID-19 pandemic. Grants Manager Shannon Candler provided information on CARES Act allocations and proposed spending recommendations for the county. No official action taken.

2. General Discussion

No items discussed.

3. Transit Discussion

Consultants from Kimley-Horn and Kinetics Transportation Group led a discussion on transit options. No official action taken.



Gwinnett

COVID-19 Response Food Insecurity

Lindsey Jorstad, CPRP

Deputy Department Director

Community Services



Emergency Food Assistance

241,637 lbs.



Older Adults

- 35,972 Meals Delivered
 - 23,727 Home-Delivered Meals
 - 12,245 Congregate Meals
- 8 Deliveries over 7 Weeks
- Kitchens
 - Gwinnett Senior Services Center
 - Norcross Senior Center
- Capacity to Serve 200+; 75 Served



Co-op Support, 95,300 lbs.



Donations

- Latter-day Saints
- Amazon
- Delta



044206080
Tomato Juice

DATE: 4/20/20
ISSUER: 605505/1
DESTINATION: Fortijo
PICKER: GM
PALLET: _____

044206080
Tomato Juice
9/4/2021
Rec'd Date
3/4/2020
Expiration Date
05/05/2021



Community Distributions

- Atlanta Community Food Bank
- 3 Distributions Complete
- 26,829 lbs.
- 704 Households
- 2,861 Residents
- 15 Partners
- Senior Meal Component



Gwinnett Police

- April 28
 - 2 Instructors
 - 11 Recruits
- April 2
 - West Precinct Crime Prevention



Early Learning

- GREAT Little Minds
- 3,713 Donated Books
- 1,853 Distributed



Partner Markets

- Goodr Pop-up Grocery Store
 - 350 Households
 - Drive-Thru & Senior Deliveries
 - 20-30 lbs. per Family



GA Grown to Go

- GA Department of Ag
- Wednesday, May 27
- Coolray Field
- Pre-order Mixed Boxes
- Co-op Support



Lawrenceville Community Garden

Harvest Gwinnett

- Senior Food Insecurity
- 28 Plots
- 4 Community Share Rows
- 5 Handicap Accessible Beds





Sustainable Food Sources

- Lenora Park
Community Garden
- Graves Park
Community Garden

Summer Meals

Summer Food Service Program

- 18 Locations
- May 18, M-F
- Breakfast & Lunch
- 11:00am - 1:00pm
- Senior Meals



Other Community Needs



Questions



Proposed Spending Recommendations for CARES Act Allocations

U.S. Dept. of Treasury, Coronavirus Relief Funds

COVID-19 Needs	Funding Amount
County Government	56,415,000
County Government Operations	30,000,000
Medical, PPE, and Cleaning Supplies	10,000,000
Technology Enhancements	4,600,000
County Services - Public Safety	3,500,000
County Services - Elections	3,200,000
Public Facility Enhancements	3,000,000
Planning and Administration	1,350,000
County Services - Food Assistance	595,000
County Services - Outreach	100,000
County Services - Health and Wellness	70,000
Health Department	5,000,000
Public Health Response	5,000,000
Emergency Food Assistance	6,800,000
Emergency Food Assistance	6,800,000
Housing & Emergency Shelter	11,000,000
Shelter and Housing	5,500,000
Rental and Utility Assistance	5,000,000
Homelessness Prevention (Diversion)	500,000
Nonprofit Services	6,140,000
Nonprofit Assistance	4,000,000
Medical, PPE, and Cleaning Supplies	1,040,000
Childcare	500,000
Transportation	250,000
Healthcare Nonprofit Services	250,000
Emotional and Spiritual Care	100,000
Small Business Assistance	19,500,000
Economic Assistance	19,500,000
Reserved for Future Needs	58,513,406
TBD	58,513,406
Grand Total	163,368,405

**Proposed Spending Recommendations
for CARES Act Allocations**

U.S. Dept. of Health & Human Services, Coronavirus Provider Relief Funds

COVID-19 Needs	Funding Amount
County Government	314,315
County Services - Fire & EMS	314,315
Grand Total	314,315

U.S. Dept. of Housing & Urban Development, Community Development Block Grant: CARES Act

COVID-19 Needs	Funding Amount
County Government	453,883
Planning and Administration	453,883
Nonprofit Assistance	2,288,140
Public Facility Enhancements	1,600,000
Public Services	688,140
Small Business Assistance	500,000
Economic Assistance	500,000
Grand Total	3,242,023

U.S. Dept. of Housing & Urban Development, Emergency Solutions Grant: CARES Act

COVID-19 Needs	Funding Amount
County Government	161,902
Planning and Administration	161,902
Housing & Emergency Shelter	1,457,122
Outreach	81,122
Rental and Utility Assistance	971,000
Shelter and Housing	405,000
Grand Total	1,619,024

U.S. Dept. of Transportation, Federal Aviation Administration: CARES Act

COVID-19 Needs	Funding Amount
County Government	157,000
County Services - Airport	157,000
Grand Total	157,000

U.S. Dept. of Transportation, Federal Transit Administration: CARES Act

COVID-19 Needs	Funding Amount
County Government	19,821,538
County Services - Transit	19,821,538
Grand Total	19,821,538



Gwinnett

Transit Options Comparison Board of Commissioners Meeting

05/12/2020

Agenda

- ATL Board Amendment Presentation
- Short-Term Transit Service Expansion Scenario
- 5-Year and 10-Year TRC/No-Rail Plans
- Rail/No-Rail Between Doraville and Multimodal Hub
- Questions/Comments



Gwinnett

ATLANTA-REGION TRANSIT LINK AUTHORITY (ATL) BOARD

**Gwinnett County:
Amended ARTP Project List**

05/7/2020

Presentation Overview

- Gwinnett Transit Planning and Outreach
- Summary of ARTP Project List Changes
- Questions/Comments



Gwinnett Transit Planning and Outreach

2017-Present

Recent Gwinnett Transit Planning



Gwinnett County Transit was established in November 2001

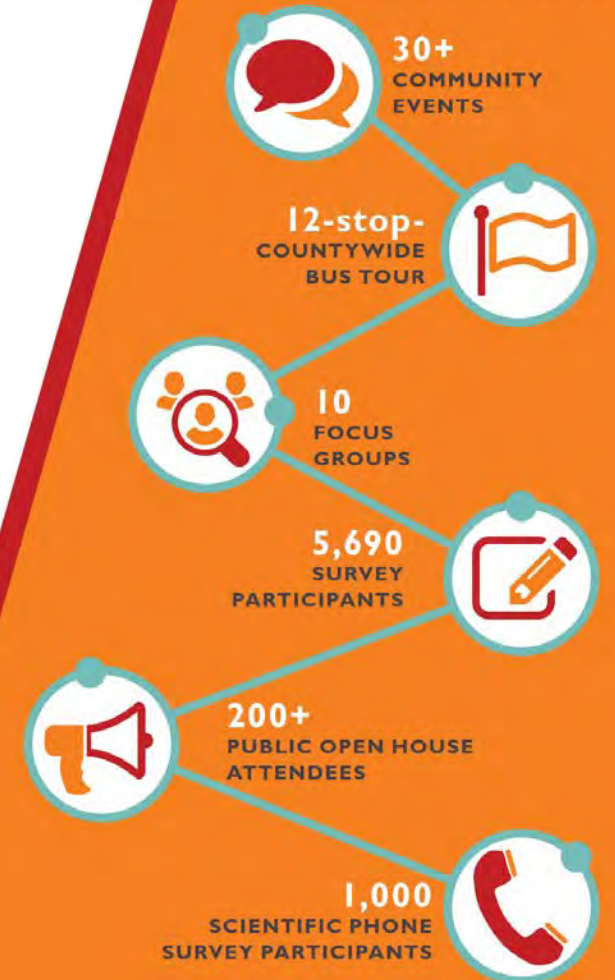
Connect Gwinnett



- Plan developed April 2017 – July 2018
- Detailed technical analysis
 - Understood community transit needs
 - Assessed demand and defined appropriate modes
 - Developed financially constrained 30-year plan with short- and mid-range plans
- Robust community engagement process
 - In-person, phone, and online
 - English, Spanish, Korean, Vietnamese language outreach
- Adopted by BOC in July 2018



CONNECT GWINNETT PUBLIC OUTREACH

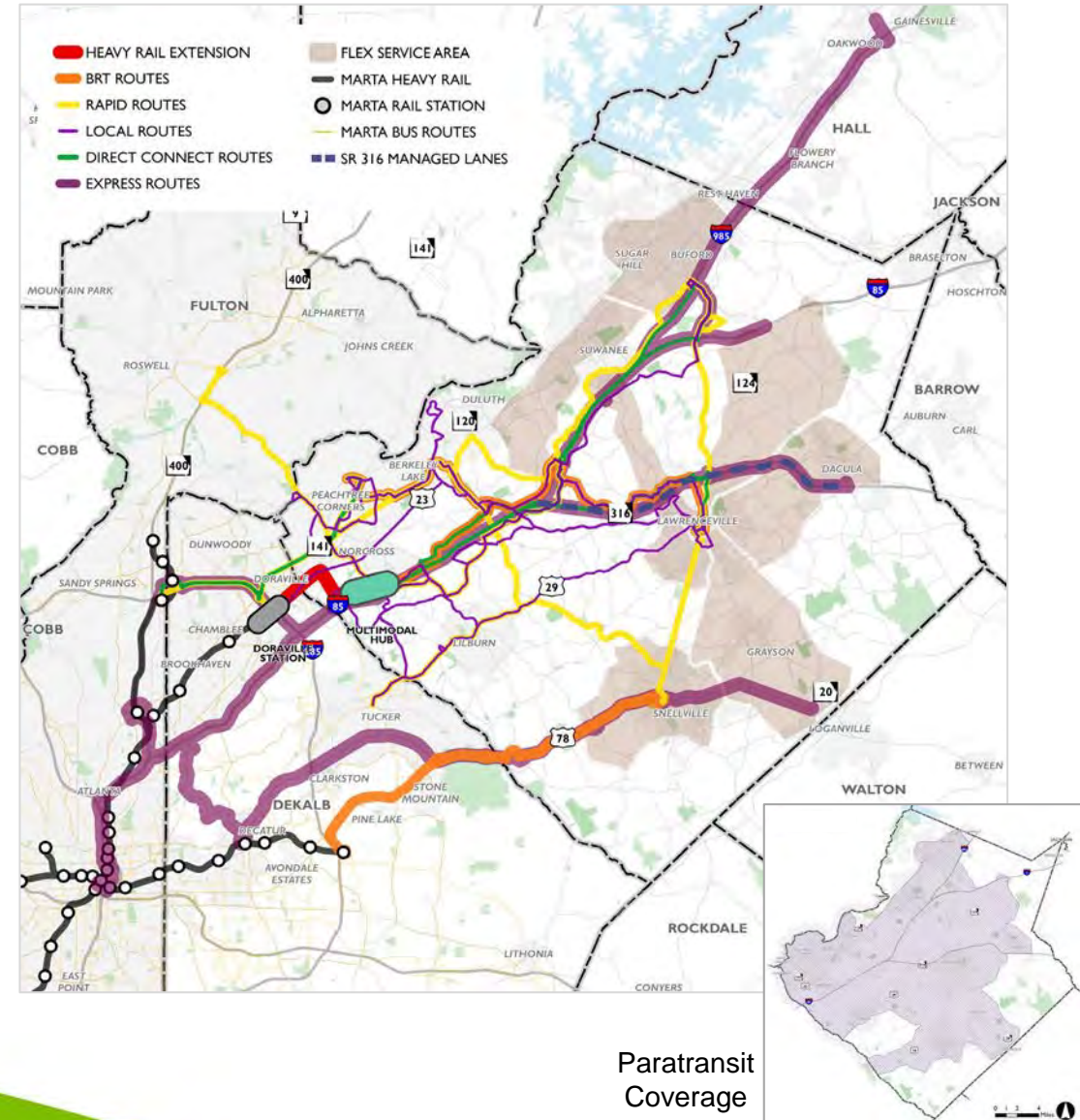


Connect Gwinnett

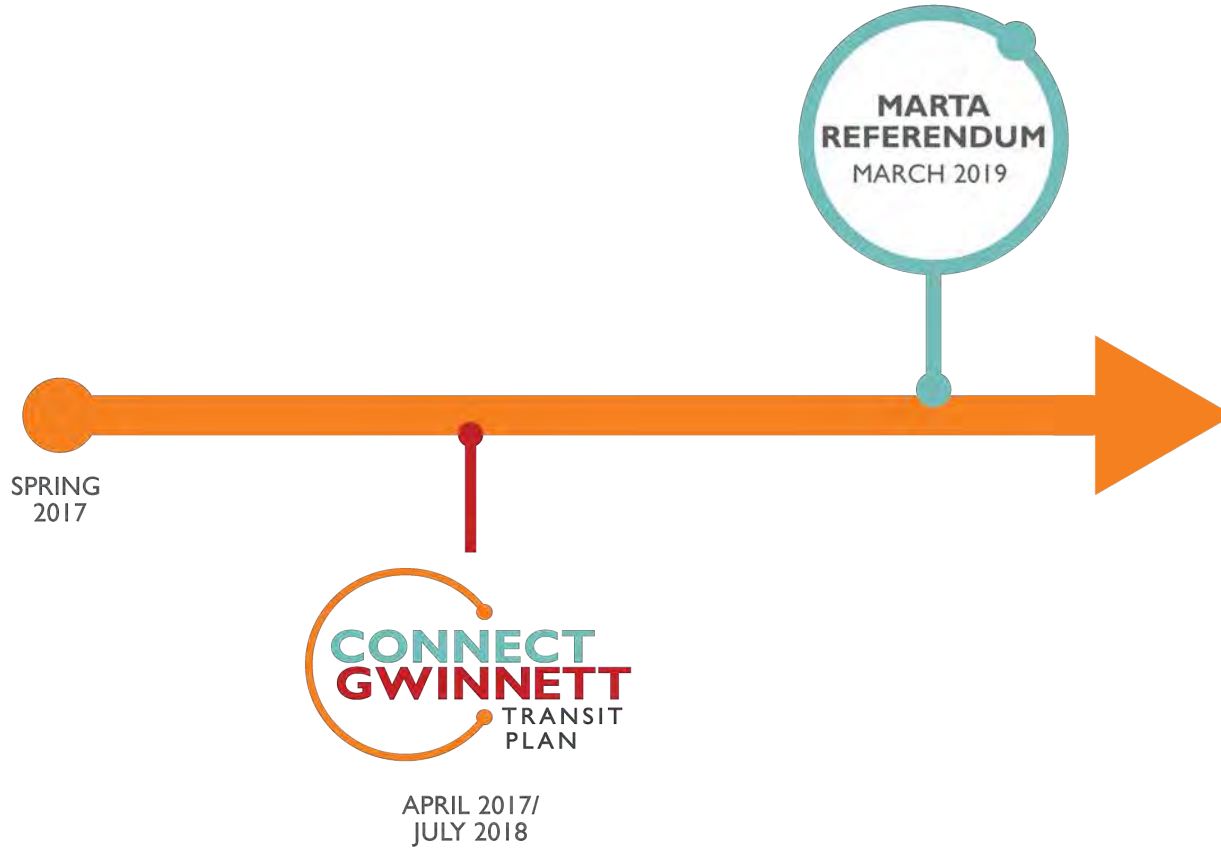
Long-Range Plan



- Original 30-year plan included:
 - 1 HRT line
 - 3 BRT routes
 - 8 Rapids/ART routes
 - 9 Express Commuter Bus routes
 - 3 Direct Connects
 - 12 Local Bus routes
 - 8 Flex/Microtransit zones
 - Extended evening and added Sunday service on all routes
- Majority implemented in first 20 years



Recent Gwinnett Transit Planning



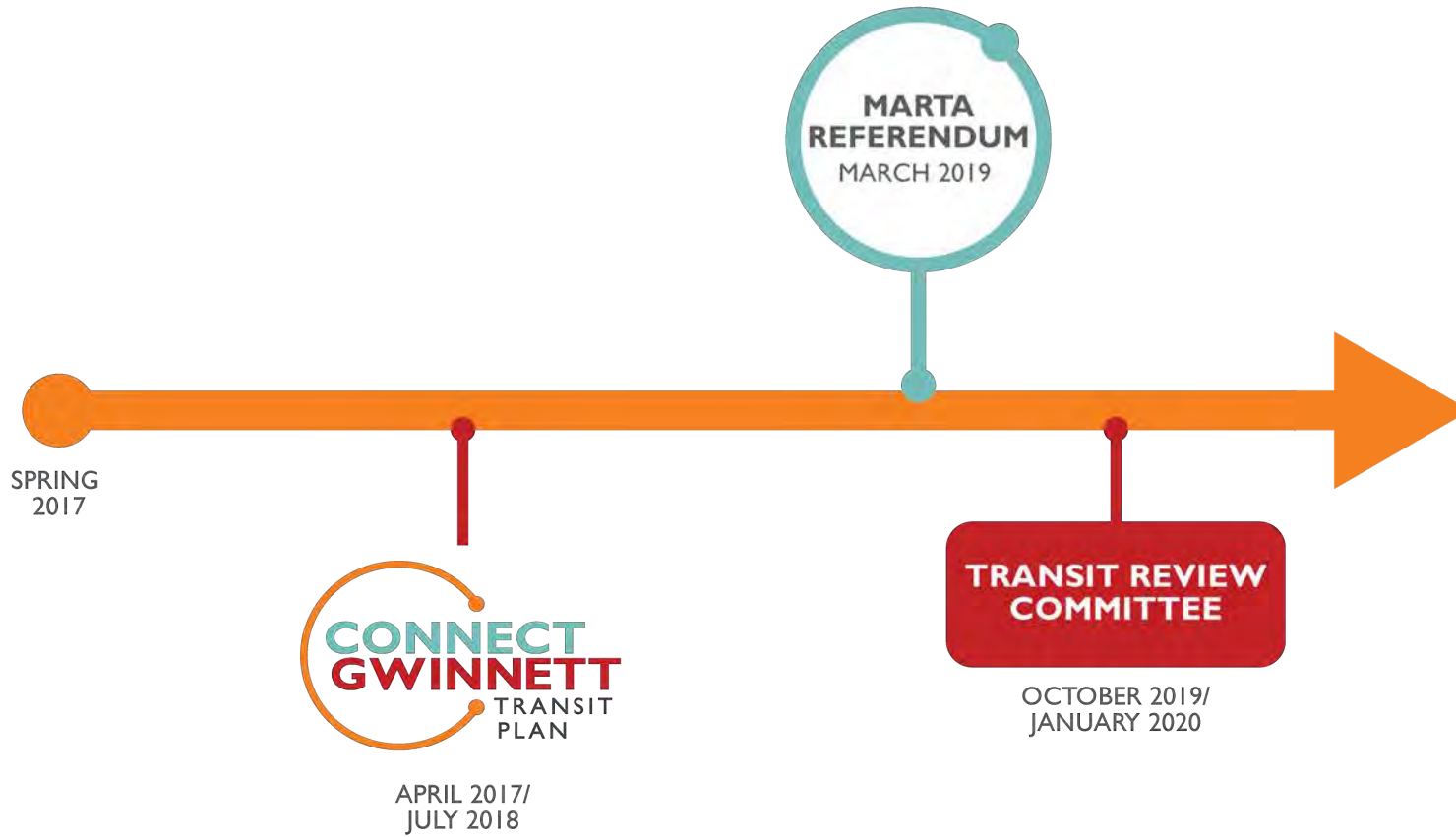
Gwinnett County Transit was established in November 2001

2019 MARTA Referendum

- Vote to join the MARTA system through 2057
- Connect Gwinnett used as base for projects
- Public outreach:
 - 19 official open houses
 - 33 other speaking events
 - Online/social media information as well as multi-lingual print collateral
- Referendum took place March 2019
- Referendum did not pass



Recent Gwinnett Transit Planning



Gwinnett County Transit was established in November 2001

Transit Review Committee (TRC)



The Board of Commissioners:

- Recognizes that **there are multiple options for the provision of transit services...and desires to pursue options that will be feasible** and meet the needs of the Gwinnett community;
- **Seeks the assistance of members of the Gwinnett community** in assessing potential transit options and **determining a feasible approach** to providing transit services to meet the increasing and changing needs...;
- Believes that the best way to obtain this assistance is through the establishment of a Transit Review Committee whose purpose is to **conduct a thorough and thoughtful review of Gwinnett's transit needs and options** for addressing these needs.

Transit Review Committee (TRC)



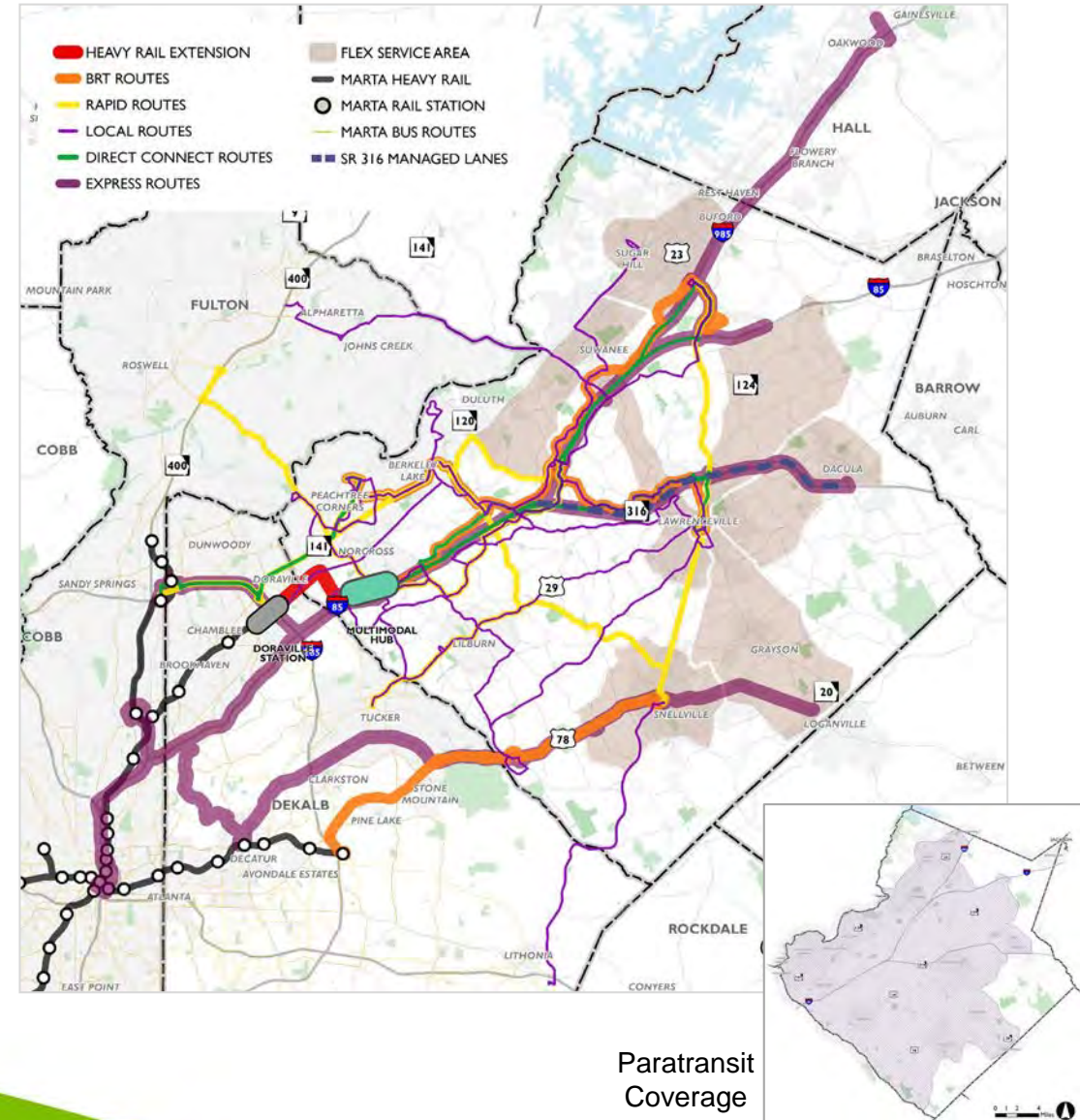
- Composed of 13 members representing various county stakeholder groups
- Conducted 11 meetings over 3-4 months:
 - General transit planning principles
 - Review of Connect Gwinnett plan and community input (from plan and referendum)
 - Opportunities for non-committee stakeholders to present as well as public input segments at every meeting
 - Possible transit scenarios
 - Explored major rail investments to Mall of Georgia as well as a No-Rail option
 - Outlined a range of options for modes countywide
 - Vetted scenarios using robust set of metrics
- Submitted TRC-recommended Plan to Gwinnett BOC



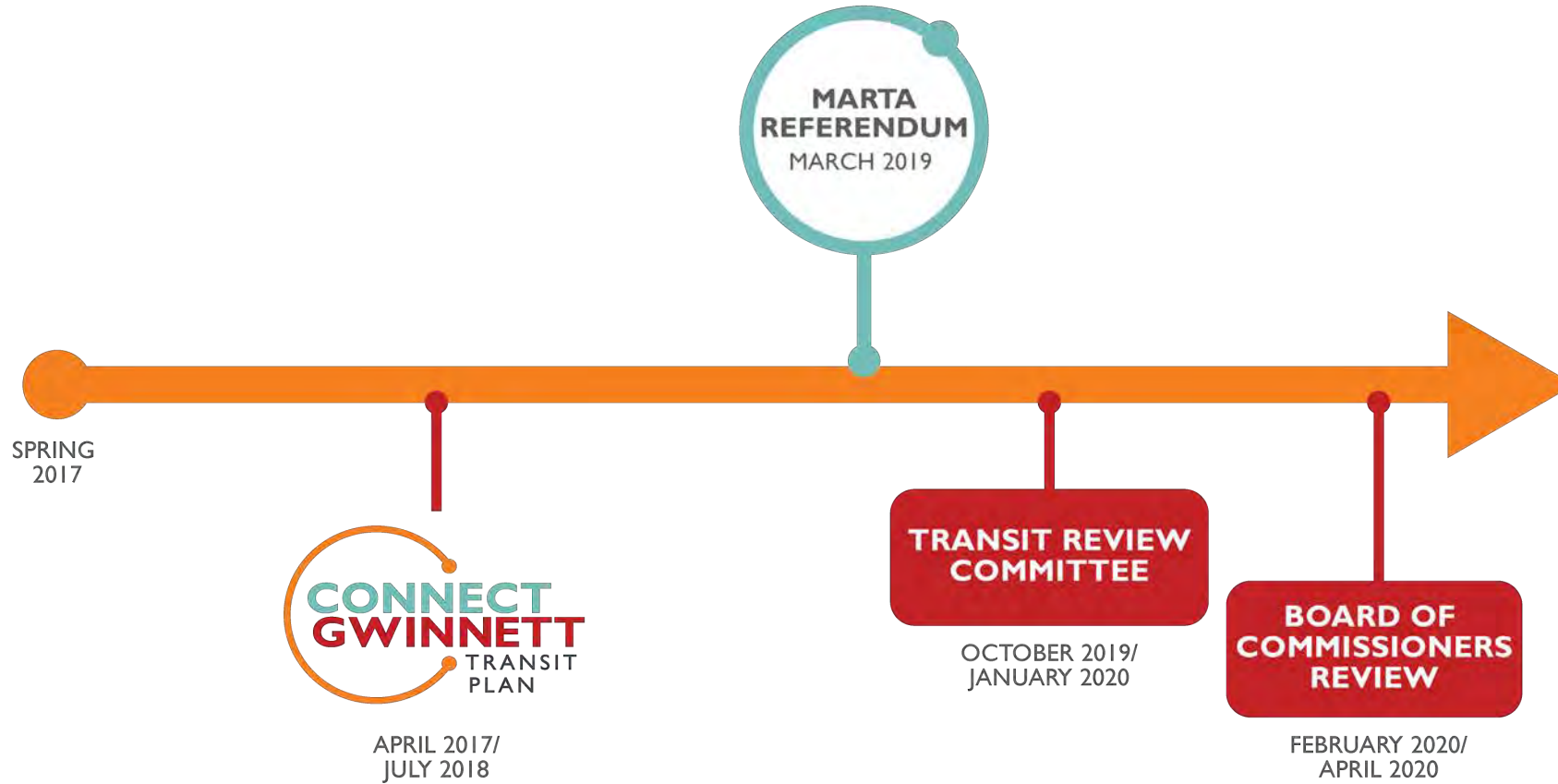
Transit Review Committee

Long-Range Plan

- Outlines a more aggressive, first 10 year implementation strategy than Connect Gwinnett
- Provides more fixed route coverage in the County, including routes in Lilburn, Sugar Hill, Suwanee/Buford
- Increases regional connectivity, including to Alpharetta and Stonecrest
- Adds Rapid/ART route that is upgraded to BRT (Mall of Georgia)
- Increases paratransit coverage



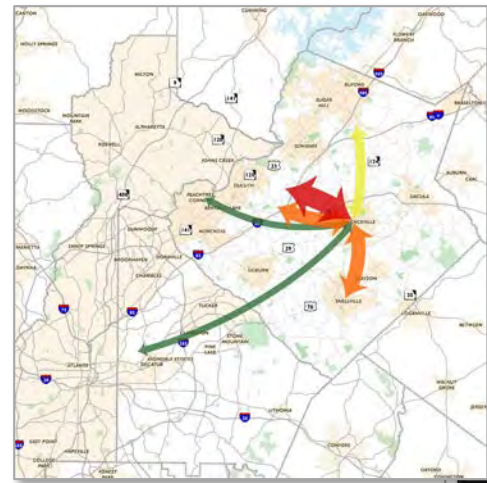
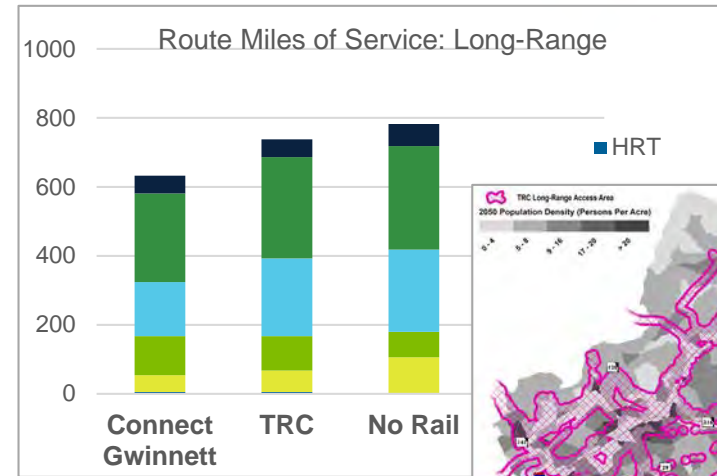
Recent Gwinnett Transit Planning



Gwinnett County Transit was established in November 2001

Board of Commissioners

- Held 5 work sessions/meetings following TRC recommendations (prior to ATL submittal)
- Considered Board priorities for transit
- Reviewed plans and metrics:
 - Connect Gwinnett: Transit Plan
 - TRC-recommended Plan
 - No-Rail Option
 - GEM Plan
- Offered public comment opportunities during regular BOC meetings as well as TRC member comments and local media coverage of meeting results
- Created aggregated list of projects for submittal to the ATL

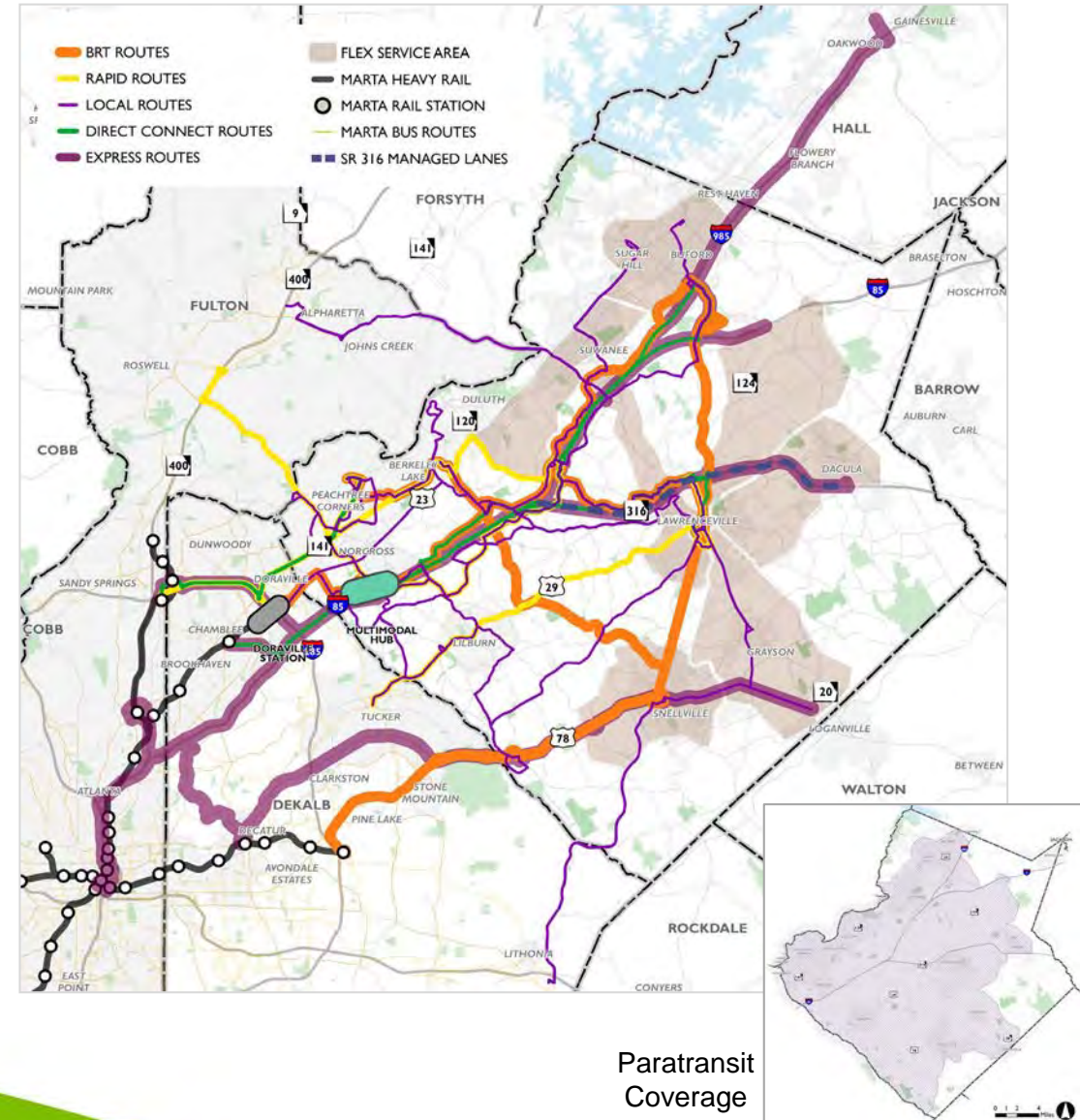


	Alpharetta	Athens	Downtown Atlanta	Emory/CDC	Tucker	Stone Mountain	Stonecrest
Duluth							
Lawrenceville			TRC	TRC	TRC		
Lilburn							
Norcross							

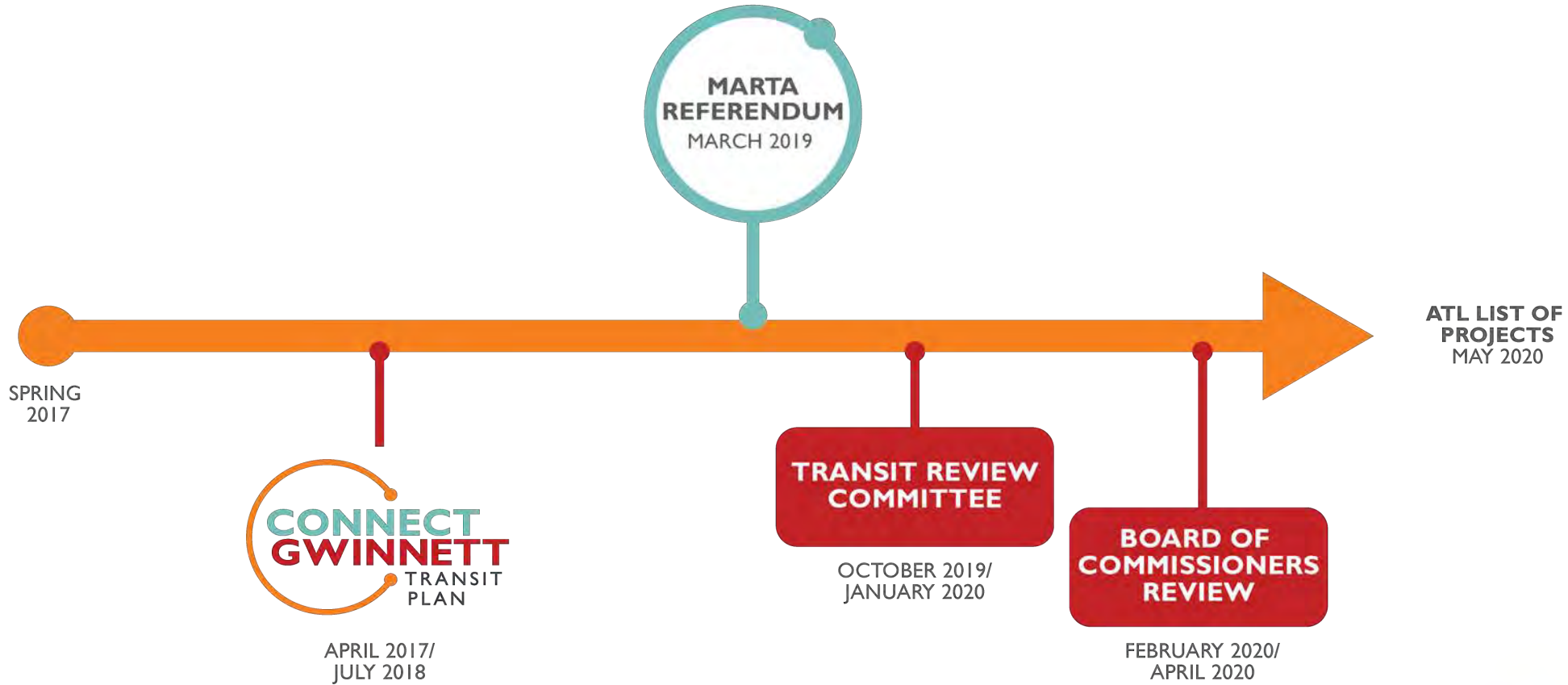
No-Rail Scenario

Long-Range Plan

- Provides robust, initial 10-year implementation strategy
- Removes HRT extension and reroutes some service to Doraville/Chamblee
- Extends I-85 BRT system from Jimmy Carter to Doraville
- Adds 2 BRT routes (6 vs. TRC's 4) and upgrades some local routes to Rapid/ART
- Creates new local routes to Buford, Grayson, and Loganville
- Extends paratransit buffer (1.25 miles)



Recent Gwinnett Transit Planning



Gwinnett County Transit was established in November 2001

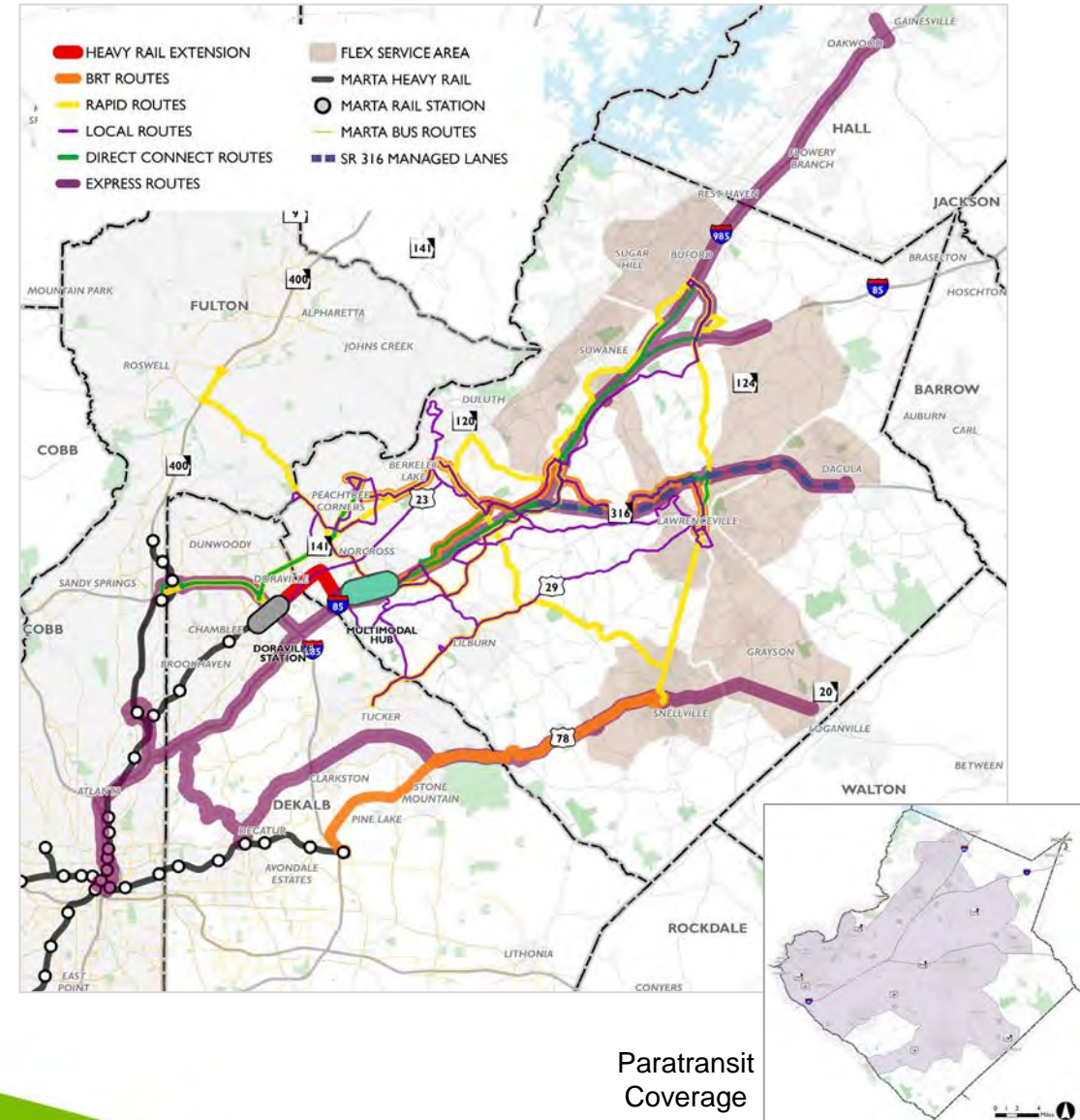


Summary of ARTP Project List Changes

Original ATL Submittal

Incorporated in Approved 2019 ARTP

- Original 30-year plan included:
 - 1 HRT line
 - 3 BRT routes
 - 8 Rapids/ART routes
 - 9 Express Commuter Bus routes
 - 3 Direct Connects
 - 12 Local Bus routes
 - 8 Flex/Microtransit zones
 - Extended evening and added Sunday service on all routes
- Majority implemented in first 20 years



Overview of Project Submittal

- Combines project lists from Connect Gwinnett, TRC-recommended Plan, No-Rail option, and BOC deliberations
- Uses highest estimated cost for each capital project and for operations/maintenance to provide greatest flexibility in the future
- If referendum is advanced, a financially constrained subset of projects would be selected for funding and presented to the ATL Board for approval

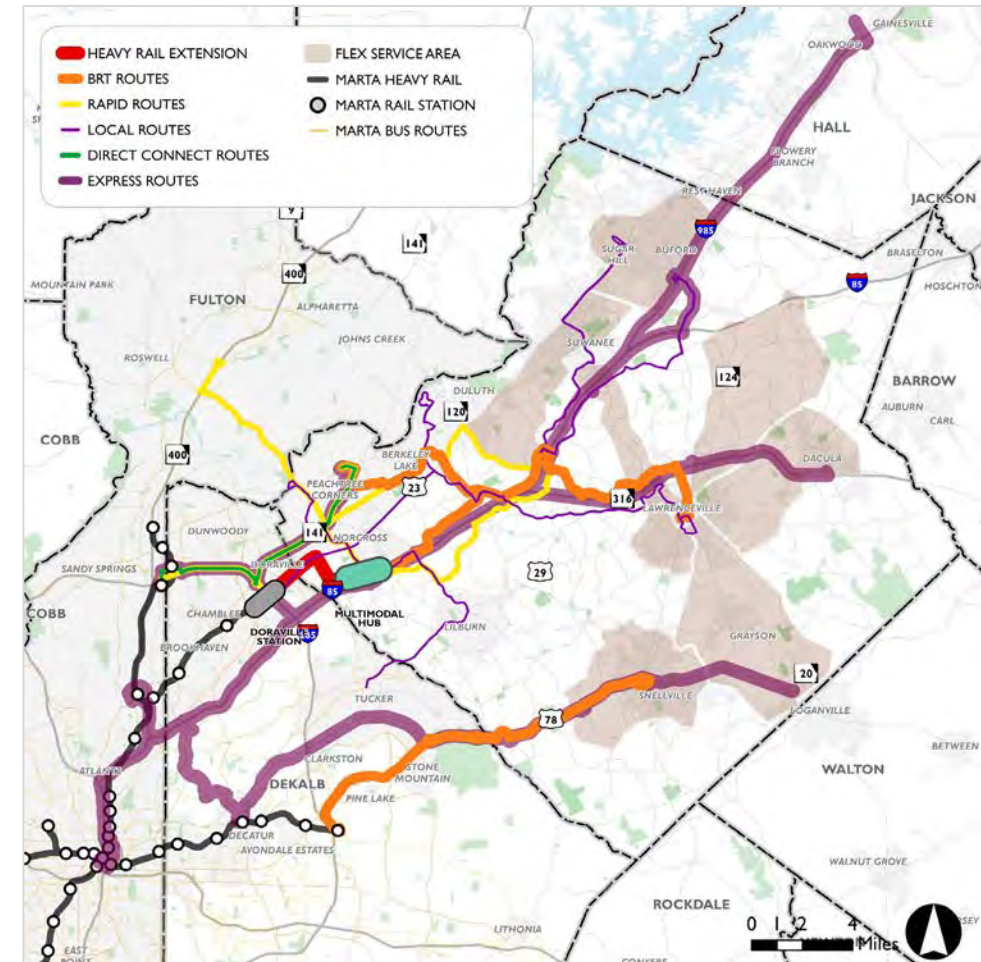
Overview of Project Submittal

Relevant to the original submittal:

- Projects with minor changes
- Projects with modified termini
- Projects with a change in mode
- New projects

Projects with Minor Changes

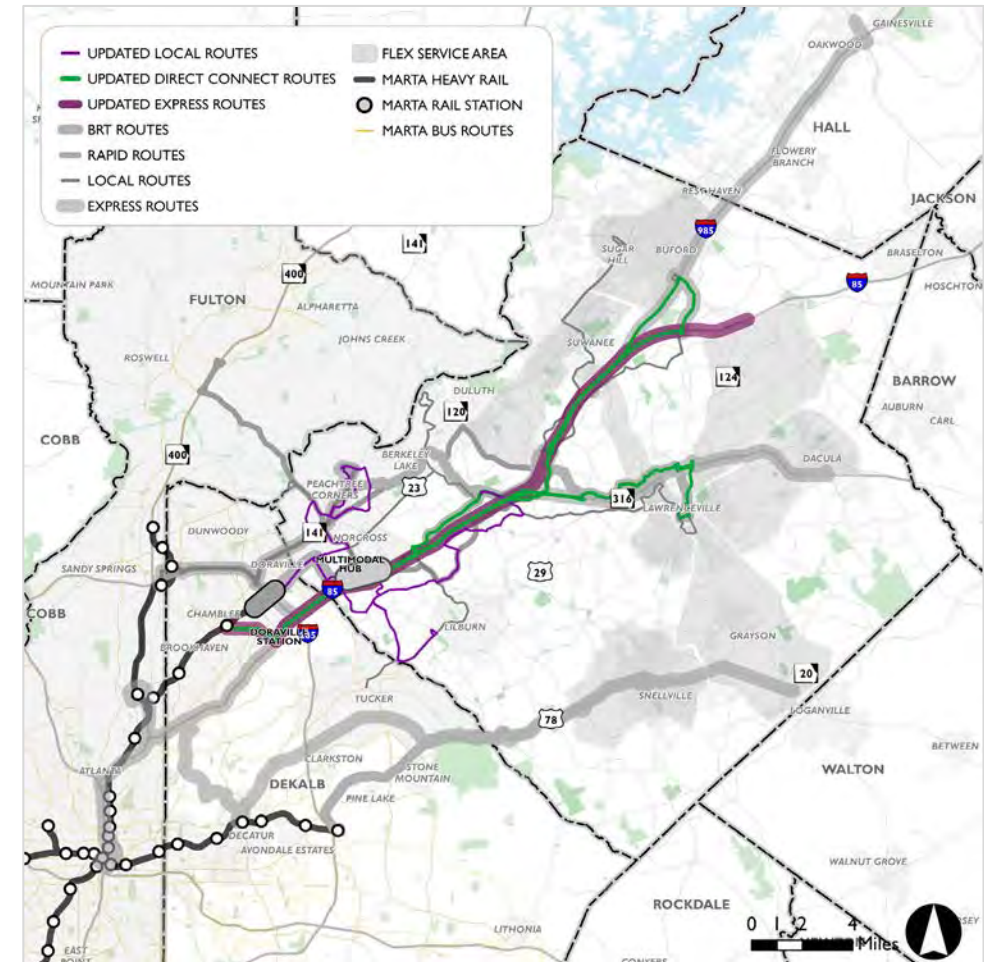
- Alignments remain the same
- Modes remain the same
- Possible differences in frequencies, span of service, etc., resulting in differences in capital/operating costs
- Possible differences in federal funding assumptions based on financially constrained plan



Projects with Minor Changes

Projects with Modified Termini

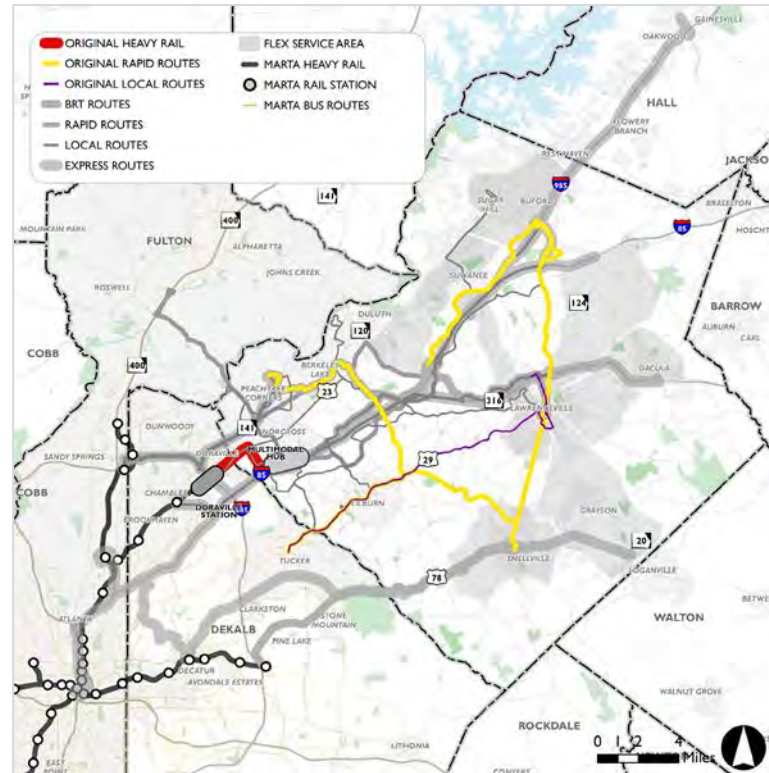
- Projects impacted by a possible removal of HRT extension from Doraville MARTA to new Multimodal Hub at Jimmy Carter
- One route terminus remains the same while second terminus changes
- Cost increases due to alignment changes resulting from possible removal of HRT extension



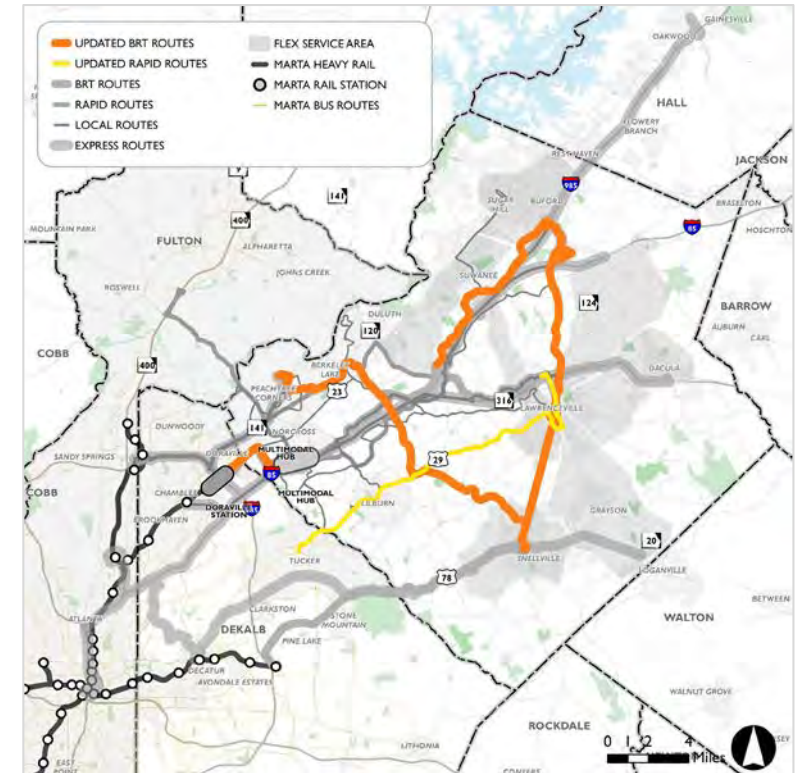
Projects with Modified Termini

Projects with a Change in Mode

- Inclusion (or not) of HRT from Doraville to Jimmy Carter affects other modal upgrades
- Projects upgraded between submittals
 - Local to ART
 - ART to BRT
- Differences in associated capital and operating costs



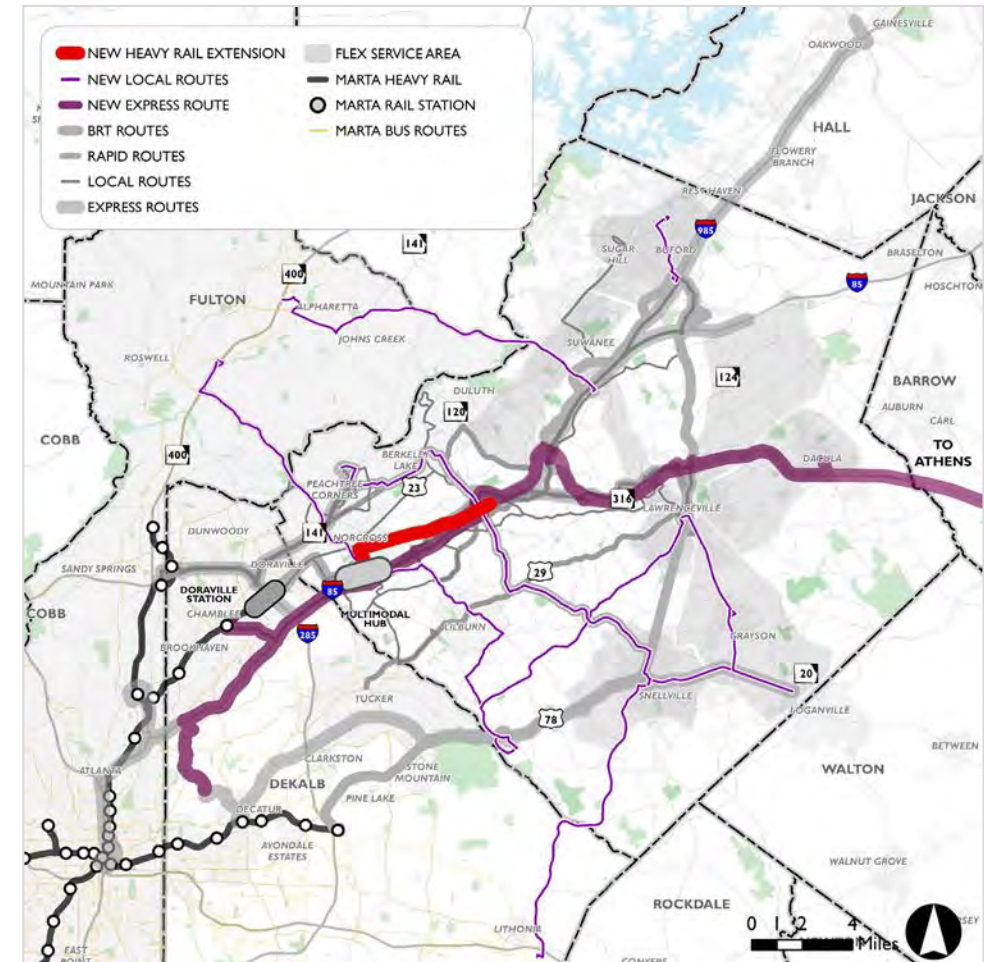
Mode In Original Submittal



Mode In New Submittal

New Projects

- Projects not included in previous submittal to the ATL
- New Local routes
 - 7 within Gwinnett
 - 3 regional connections
- New Express Commuter routes
 - 1 from Chamblee MARTA to Athens
 - 1 from Indian Trail Park-and-Ride to Emory/CDC
- Aspirational HRT extension to Gwinnett Place Mall



New Projects



Questions/Discussion



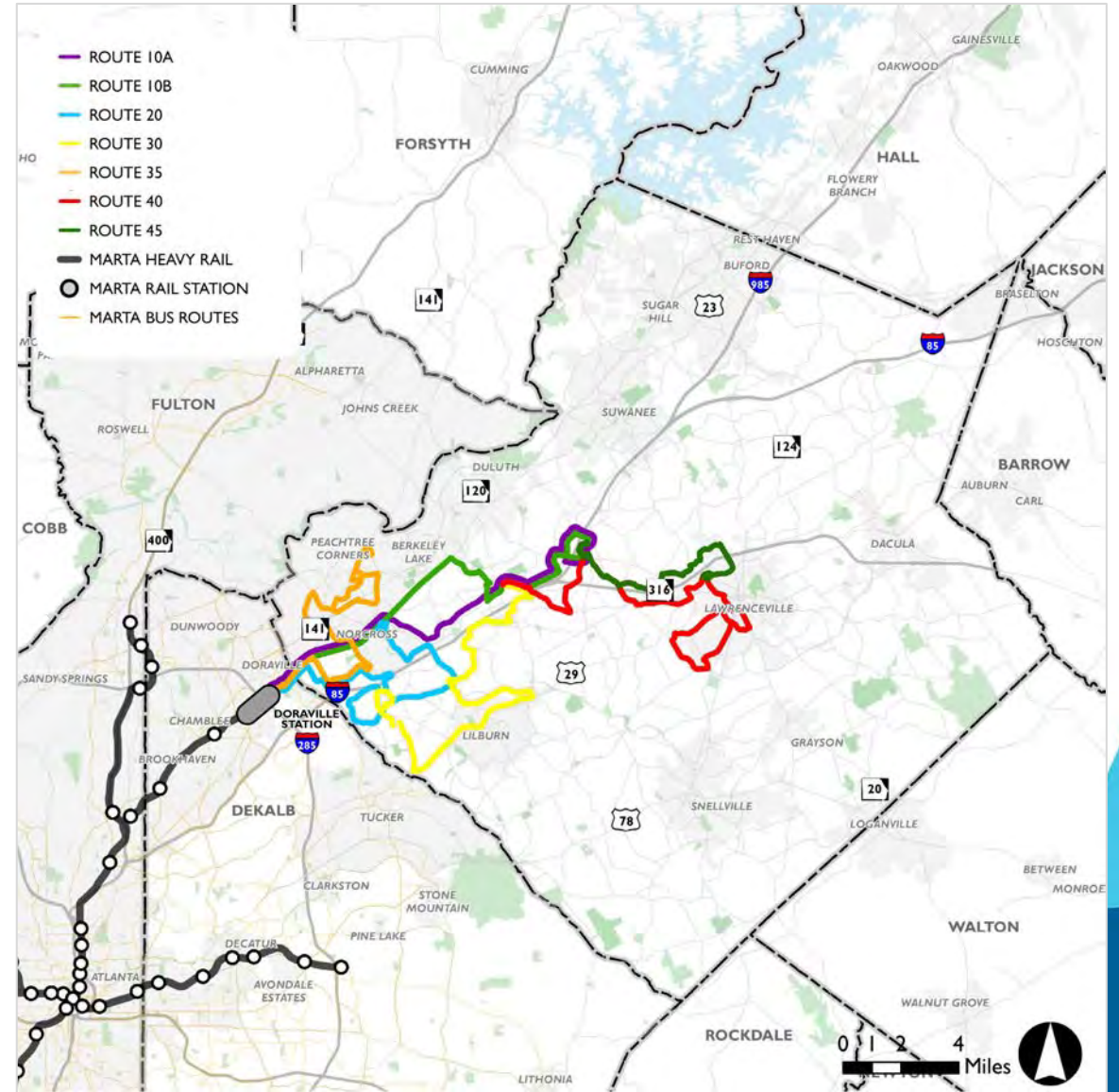


Gwinnett

**Potential Short-Term Transit Service
Expansion Scenario**
Without Dedicated Funding Source

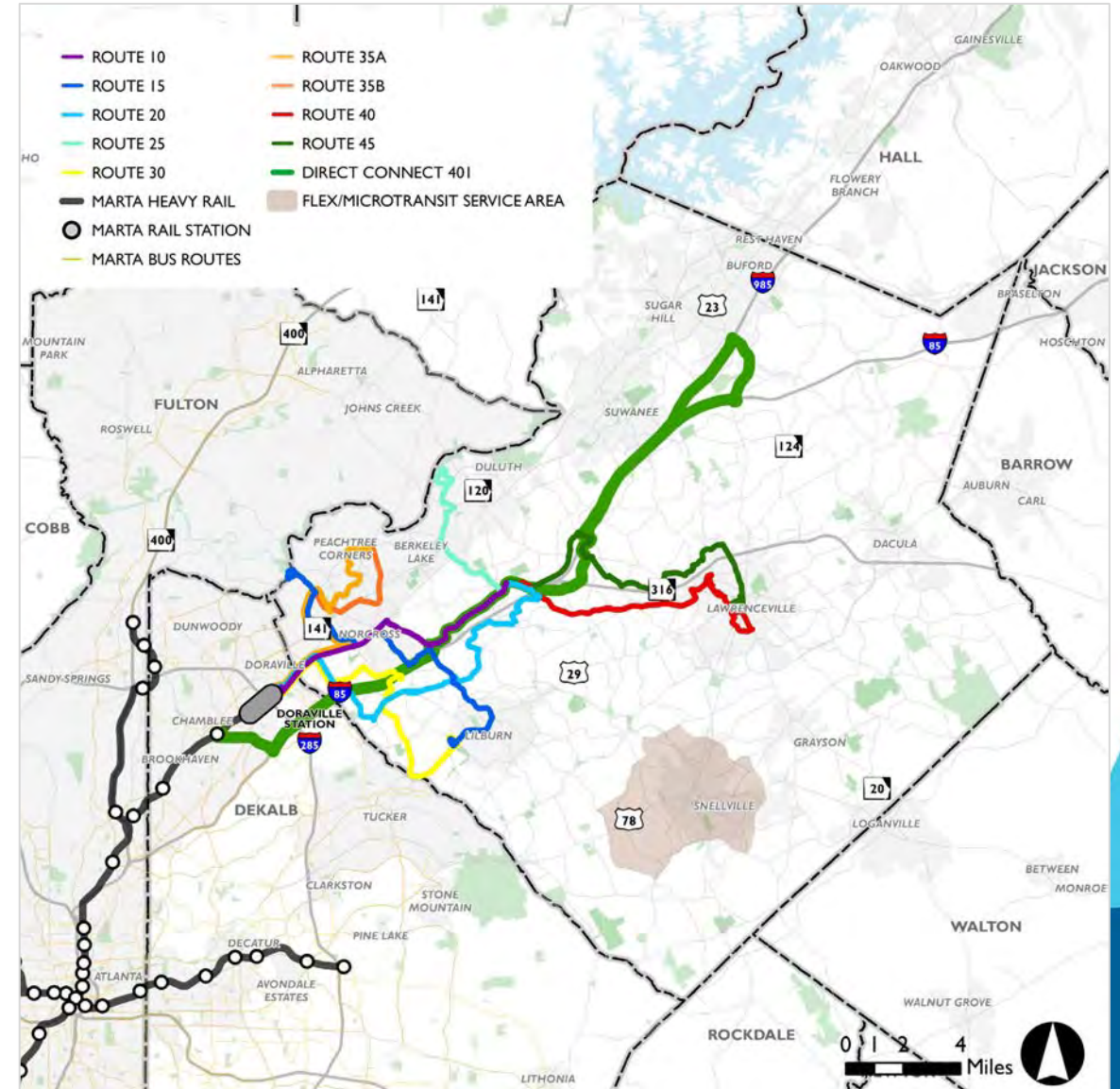
Existing Service

- 7 Local Routes
- 5 Express Routes
- Paratransit Service



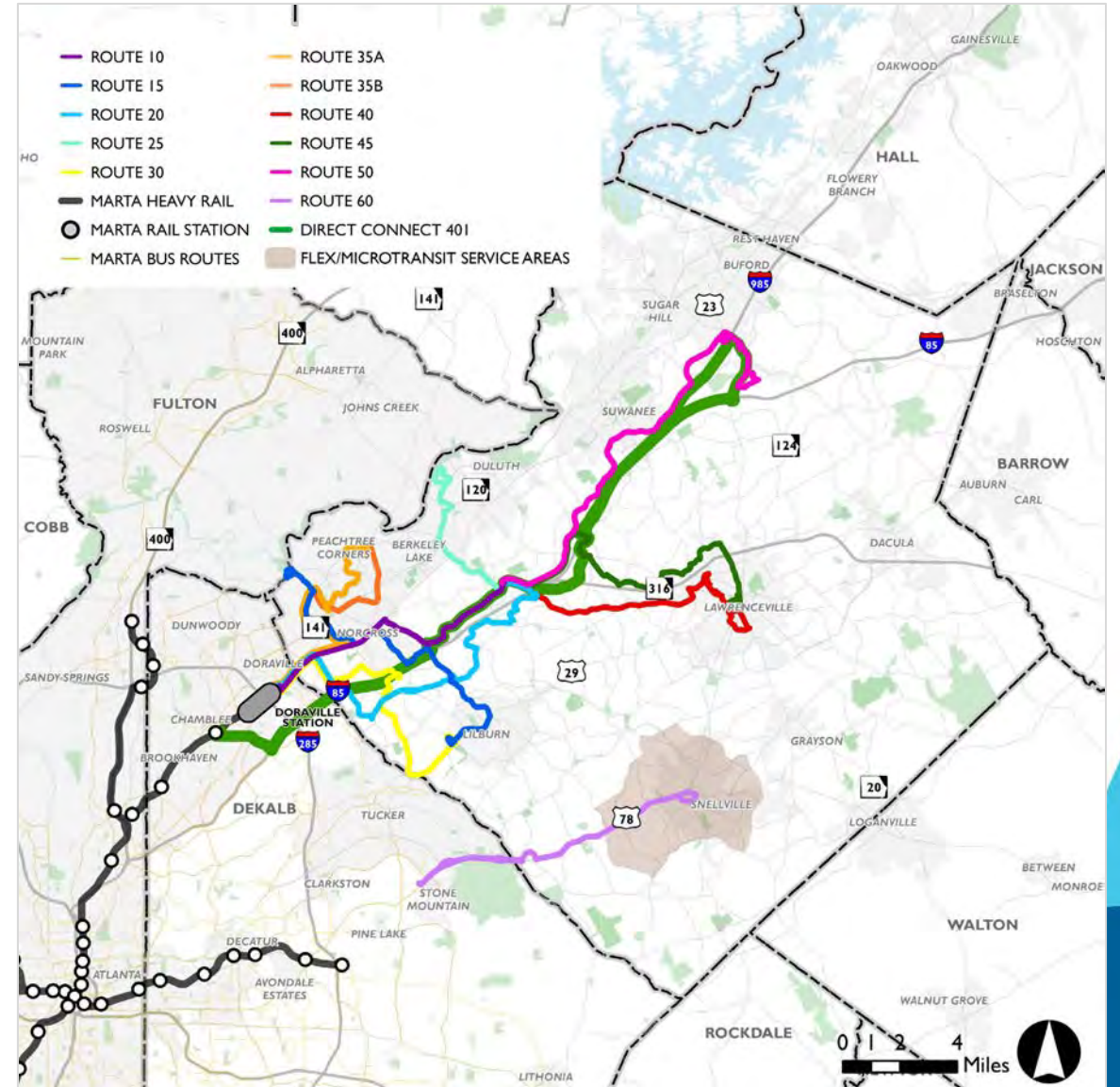
Phase 1 Priorities

- Restructure existing local route network
- Direct Connect route to Mall of Georgia
- Snellville Flex service
- Improved route frequencies (currently funded through CMAQ for first three years)
- Bus fleet purchases to accommodate service expansion



Phase 2 Priorities

- New local service on US 78 between Snellville and Goldsmith P&R
- New local service from Gwinnett Transit Center to Mall of Georgia
- Later evening service (funded through CMAQ for first three years)
- Bus fleet purchases to accommodate service expansion



Cost Impacts

Phase	Capital Costs (Buses)	Add'l. Annual O&M Costs
Phase 1 Priorities	\$2,400,000	\$3,570,000
Phase 2 Priorities	\$3,150,000	\$3,930,000
Total (Both Phases)	\$5,550,000	\$7,500,000



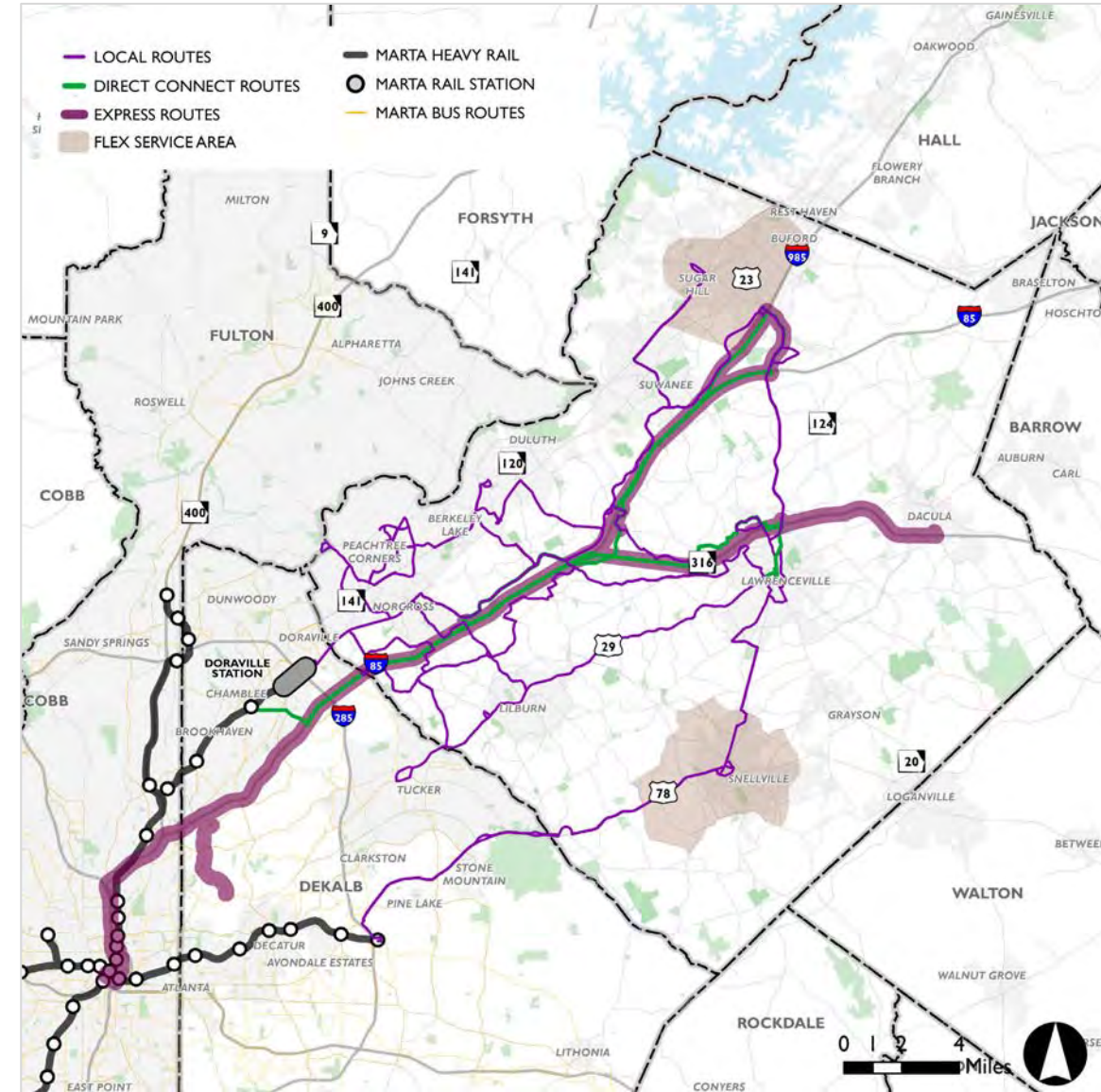
Gwinnett

5-Year and 10-Year Plans

No-Rail and TRC Scenarios

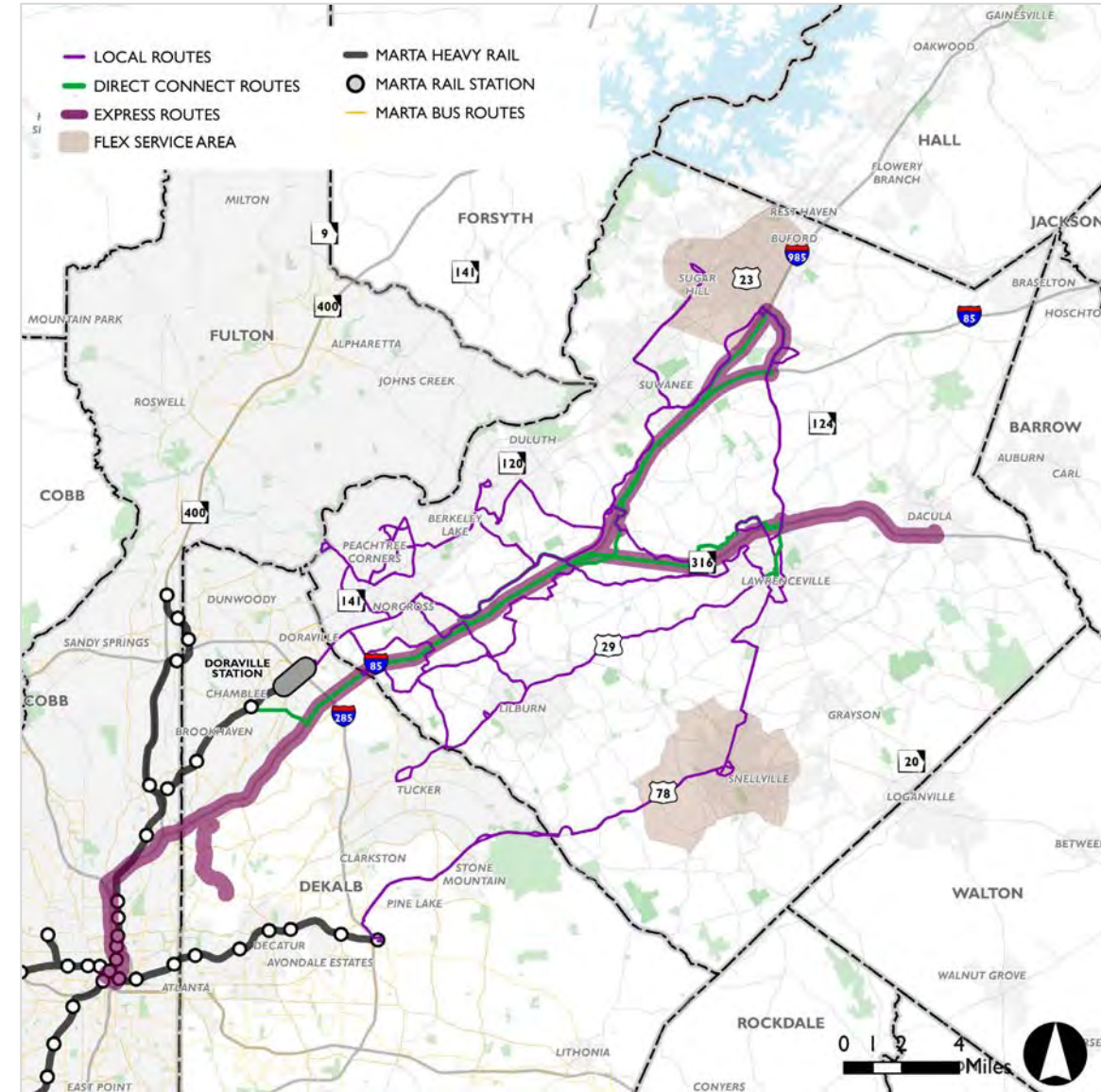
5-Year Plan

- Geographically, plans are the same through 5 years
- 16 Local Routes
- 2 Direct Connect Routes
- 5 Express Commuter Routes
- 2 Flex/Microtransit Zones
- New Maintenance Facility
- 2 New SR 316 Park-and-Rides
- 2 New Transit Centers (Lawrenceville and GGC)

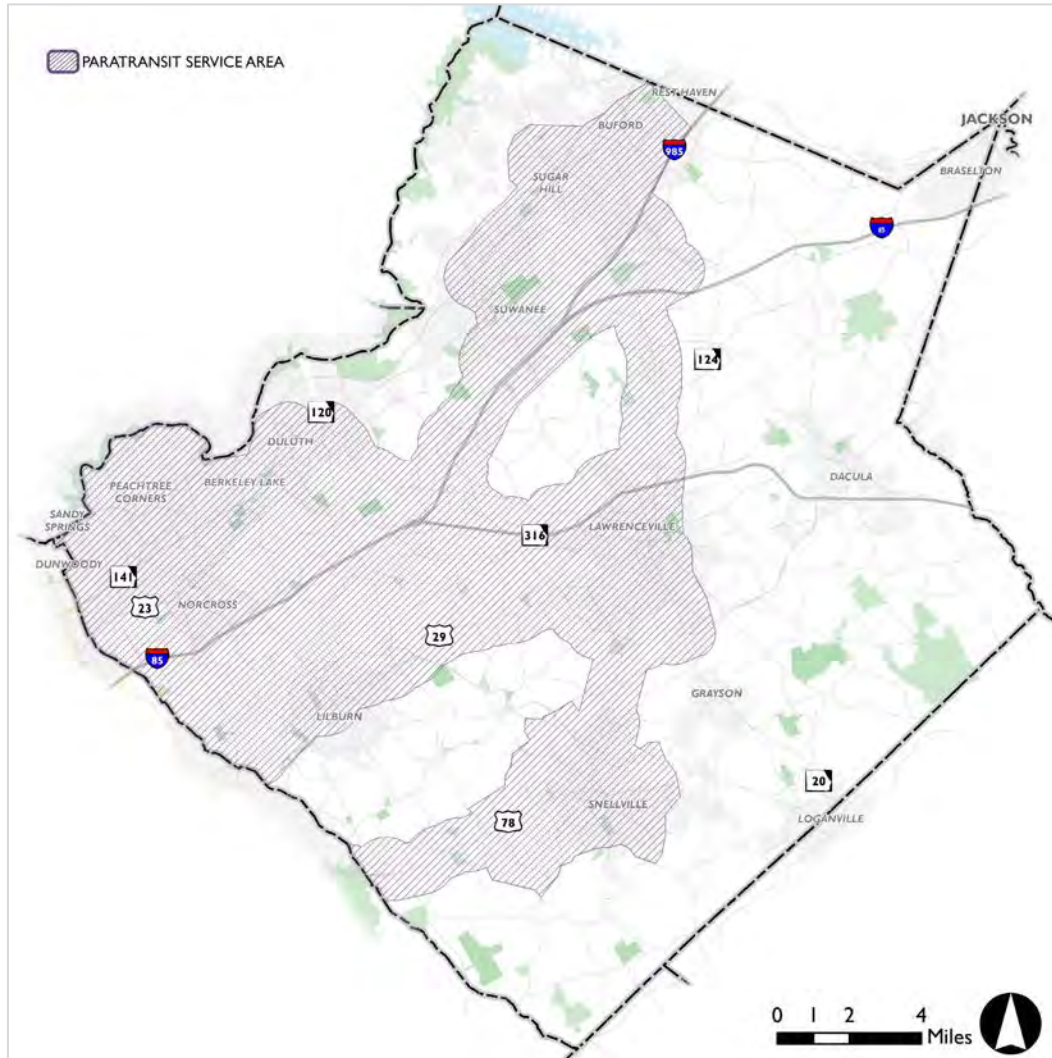


5-Year Plan: No-Rail

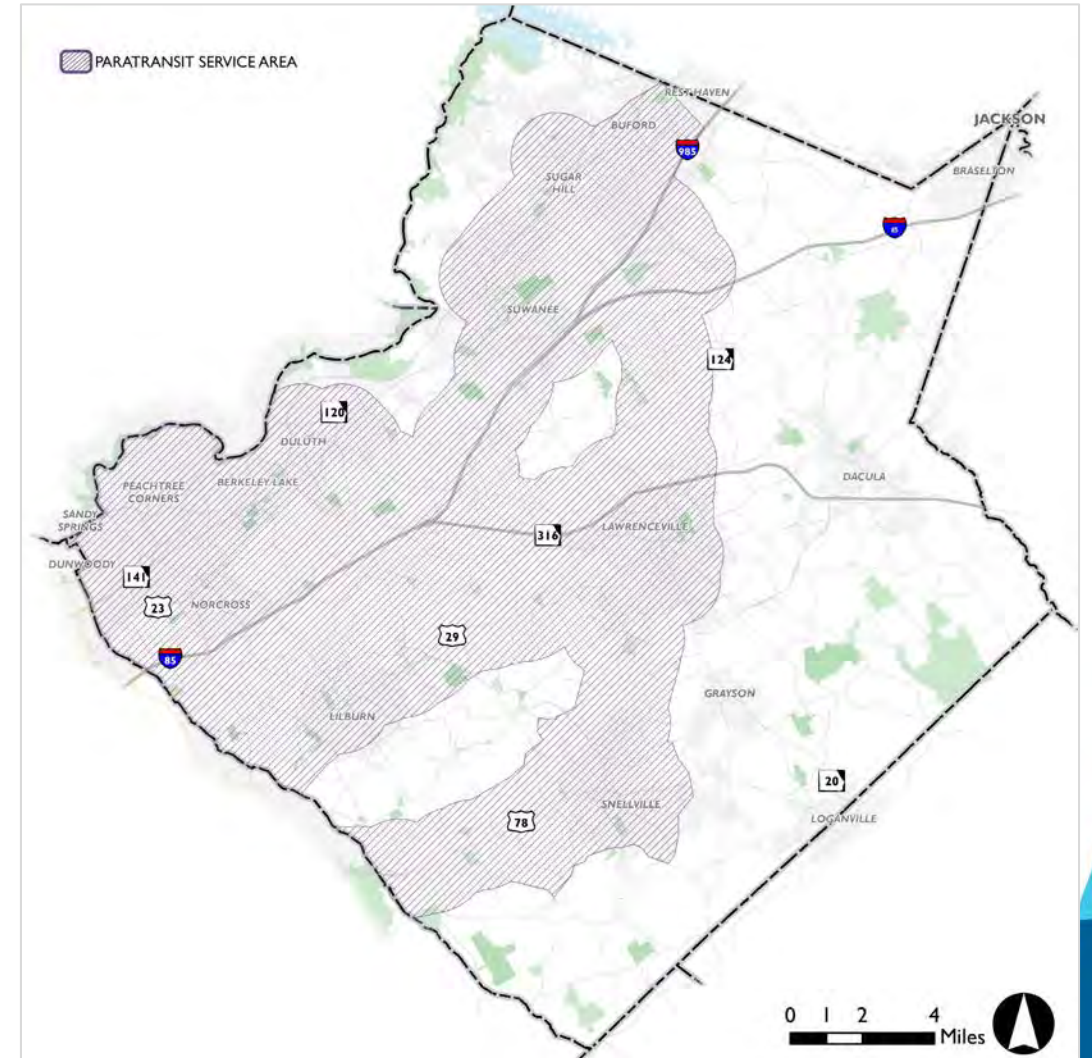
- Some new local routes get Sunday service in No-Rail, but not in TRC
- Paratransit buffer is increased from 0.75 to 1.25 miles



5-Year Plan: Paratransit Coverage



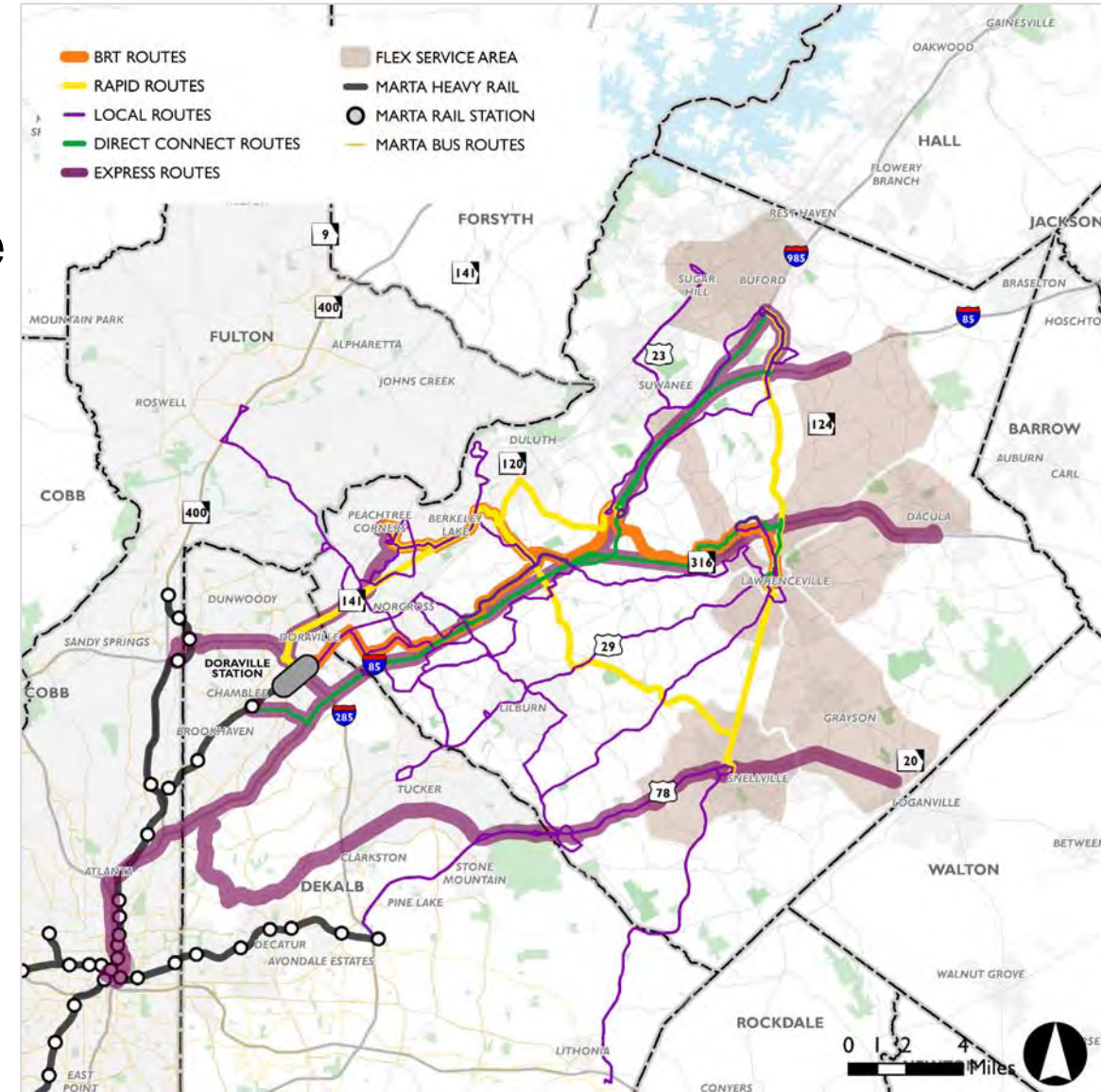
TRC 5-Year



No-Rail 5-Year

10-Year Plan: TRC

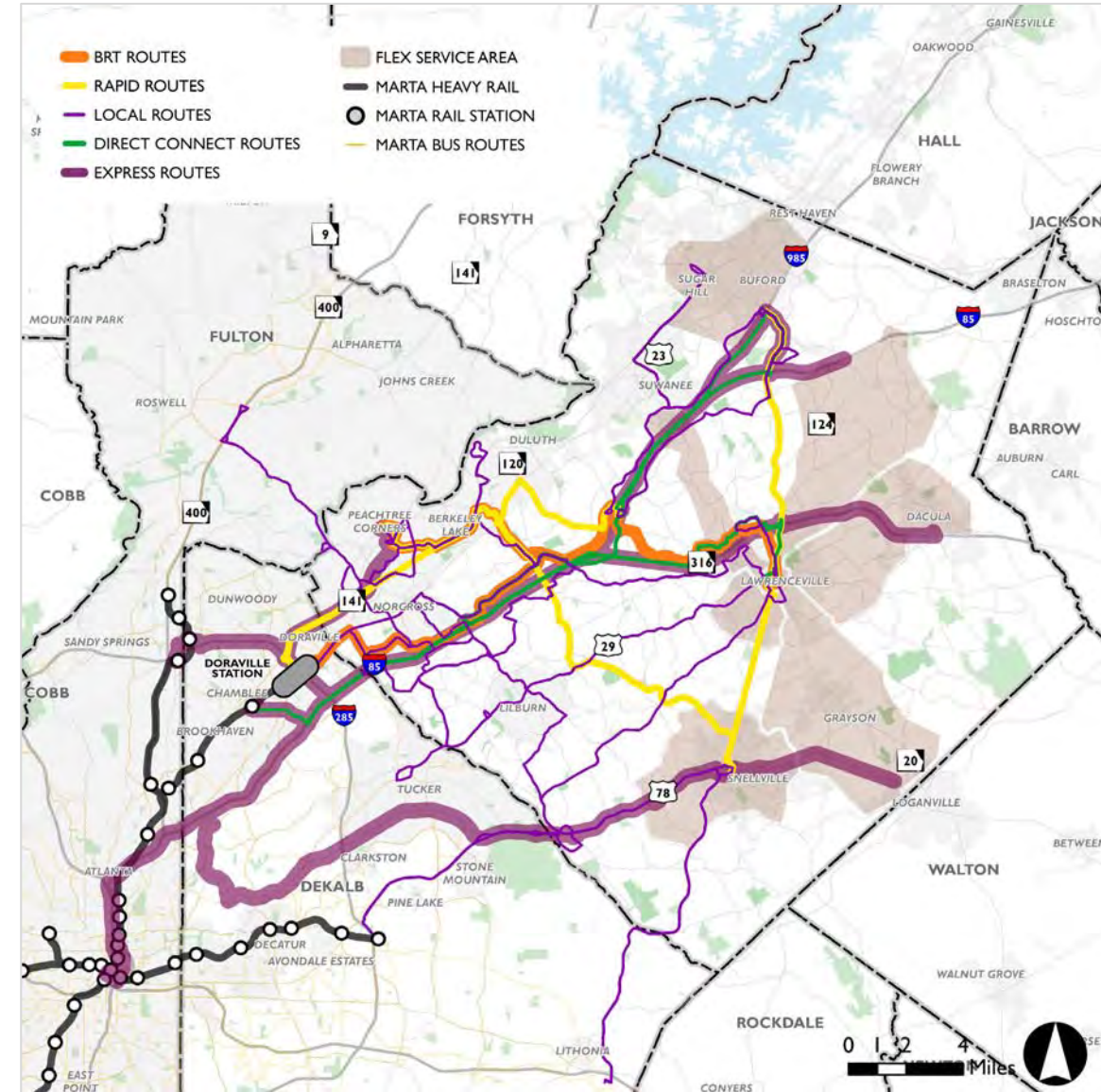
- 2 BRT Routes
 - Doraville to Sugarloaf Park-and-Ride
 - Lawrenceville to Peachtree Corners
- 3 Rapid Routes
- 17 Local Routes
- 2 Direct Connect Routes
- 9 Express Commuter Routes
- 7 Flex/Microtransit Zones



10-Year Plan: TRC

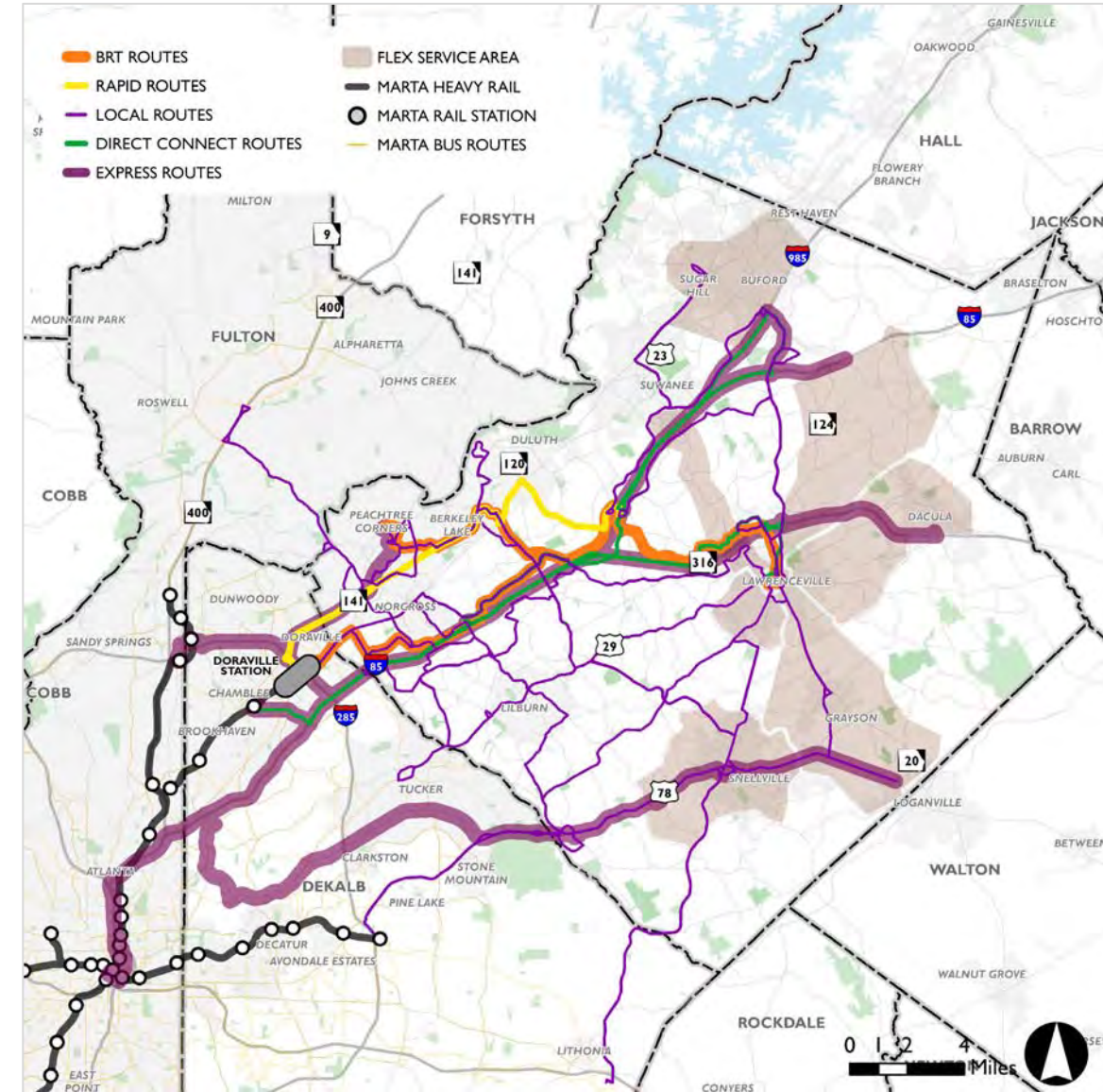
- Upgrades to existing infrastructure
 - Gwinnett Transit Center
 - Sugarloaf Mills Park-and-Ride
 - Snellville Park-and-Ride
- New Park-and-Rides
 - Hamilton/Braselton
 - Loganville
 - Peachtree Corners
- New Transit Centers
 - Infinite Energy Center

Note: In addition to capital investments in the 5-year plan

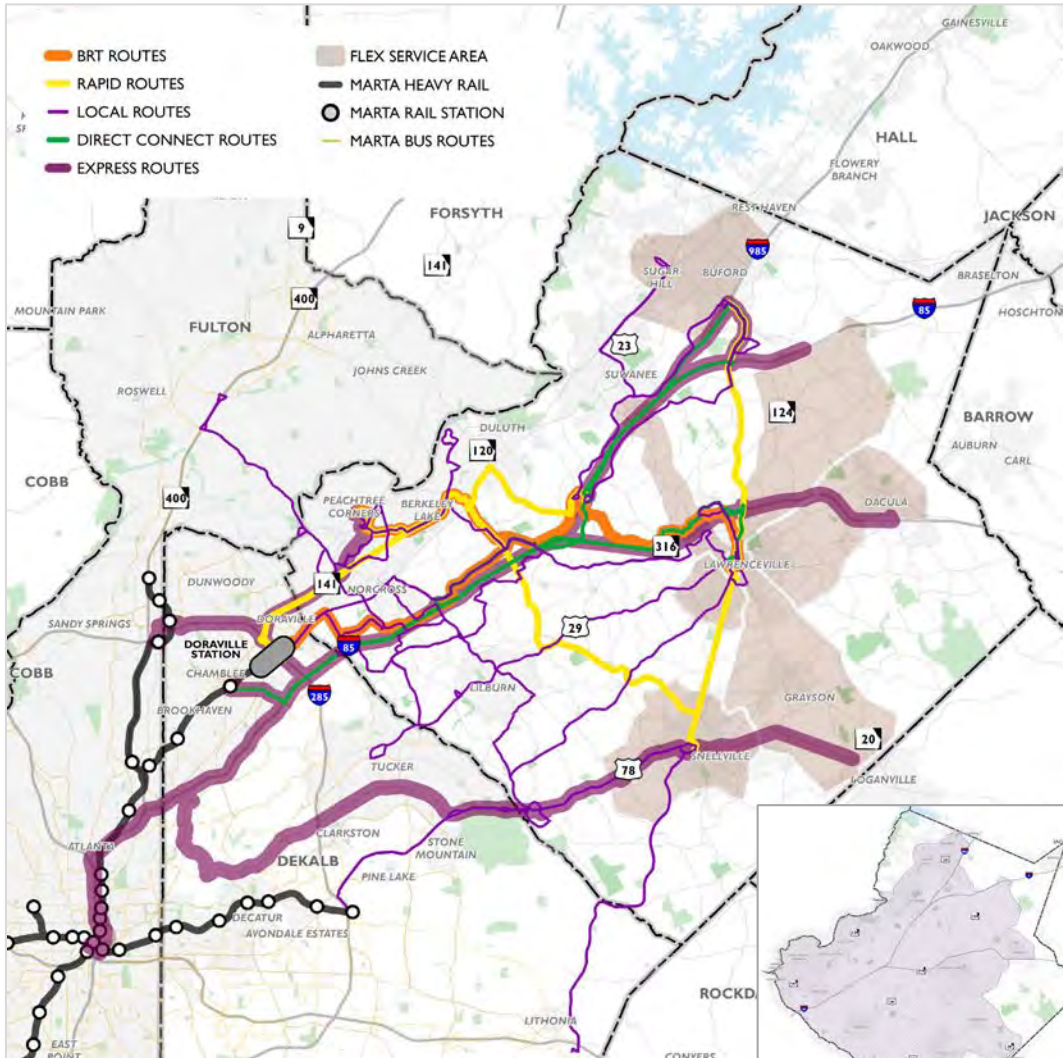


10-Year Plan: No-Rail

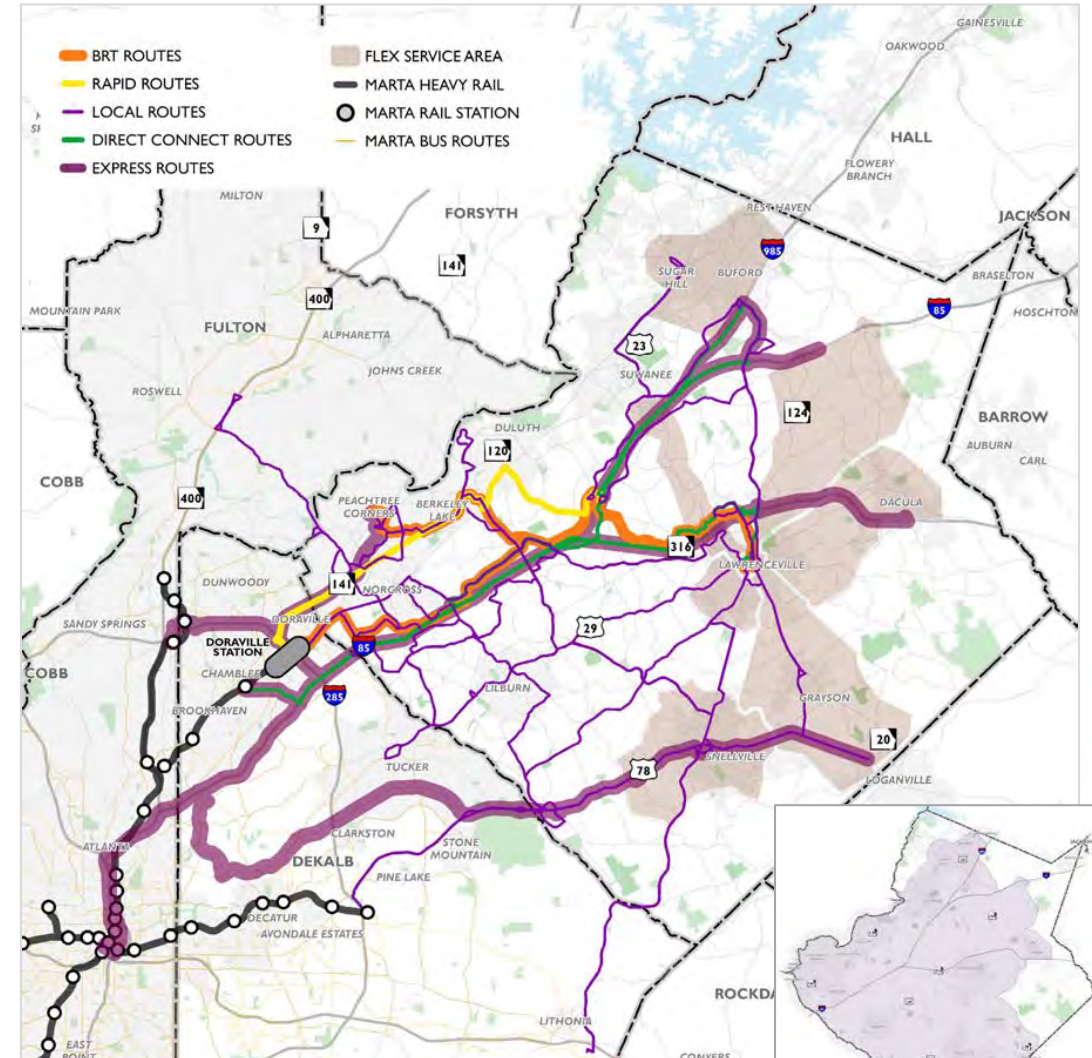
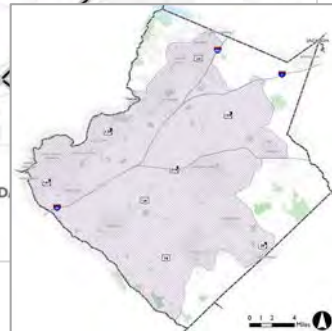
- Same capital improvements as TRC
- Additional capital improvements:
 - I-985 Park-and-Ride Upgrades
 - Doraville MARTA Station Expansion
 - Multimodal Hub
 - Planning/Investment:
 - BRT 704: Snellville – Mall of Georgia/I-985
 - Rapid 209: Tucker (via Lawrenceville Highway)



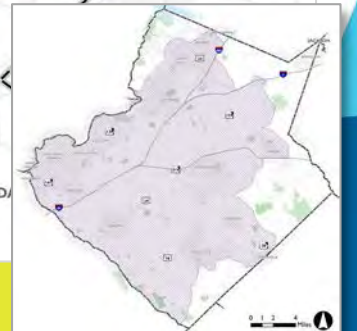
10-Year Plan



TRC 10-Year



No-Rail 10-Year Plan



Comparison

	BRT	Rapid	Local	Express Commuter	Flex/ Microtransit
<i>Existing</i>	0	0	7	5	0
TRC (10-Year)	2	3	17	9	7
No-Rail (10-Year)	2	1	22	9	7

- TRC
 - 2 Additional Rapid Routes
- No-Rail
 - 2 TRC Rapids are replaced by 3 Local Routes
 - 2 additional Local Routes to Loganville from Lawrenceville/Snellville
 - Additional capital improvements

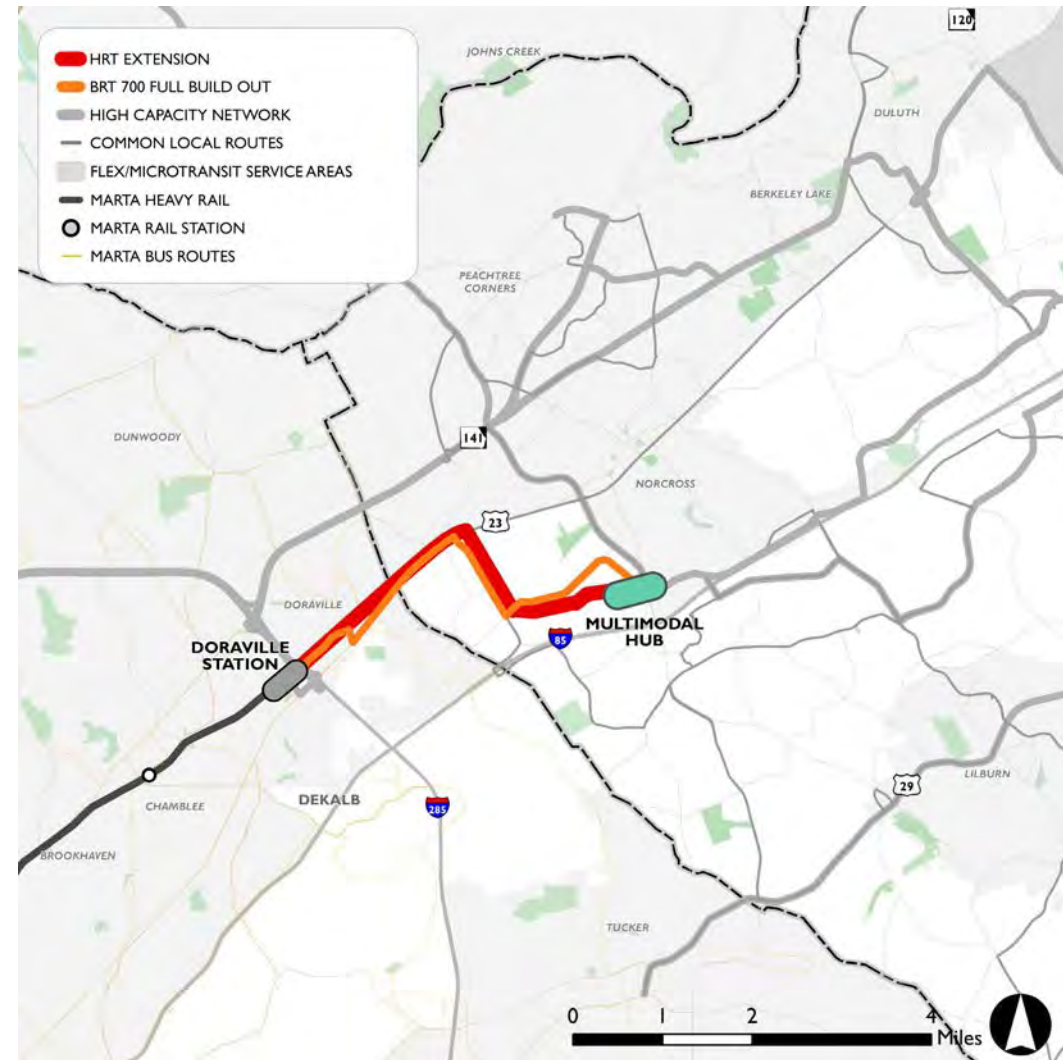


Gwinnett

Rail/No-Rail Between Doraville and Multimodal Hub

Doraville/Multimodal Hub

- HRT Extension
- BRT 700 Full Build-Out



Net Cost Impacts (2018\$)

O&M	Annual Costs
Rail Extension Cost	\$13,114,000
No-Rail (Terminus Change)	-\$4,915,000
Net Annual Rail Cost	\$8,200,000

Total Plan O&M Cost: \$139,400,000

Capital Costs	Infrastructure Costs	Additional Bus Costs
Rail Extension Cost	\$1,155,000,000	N/A
No-Rail (Terminus Change)	-\$126,000,000	-\$16,075,000
Net Annual Rail Cost	\$1,029,000,000	-\$16,075,000

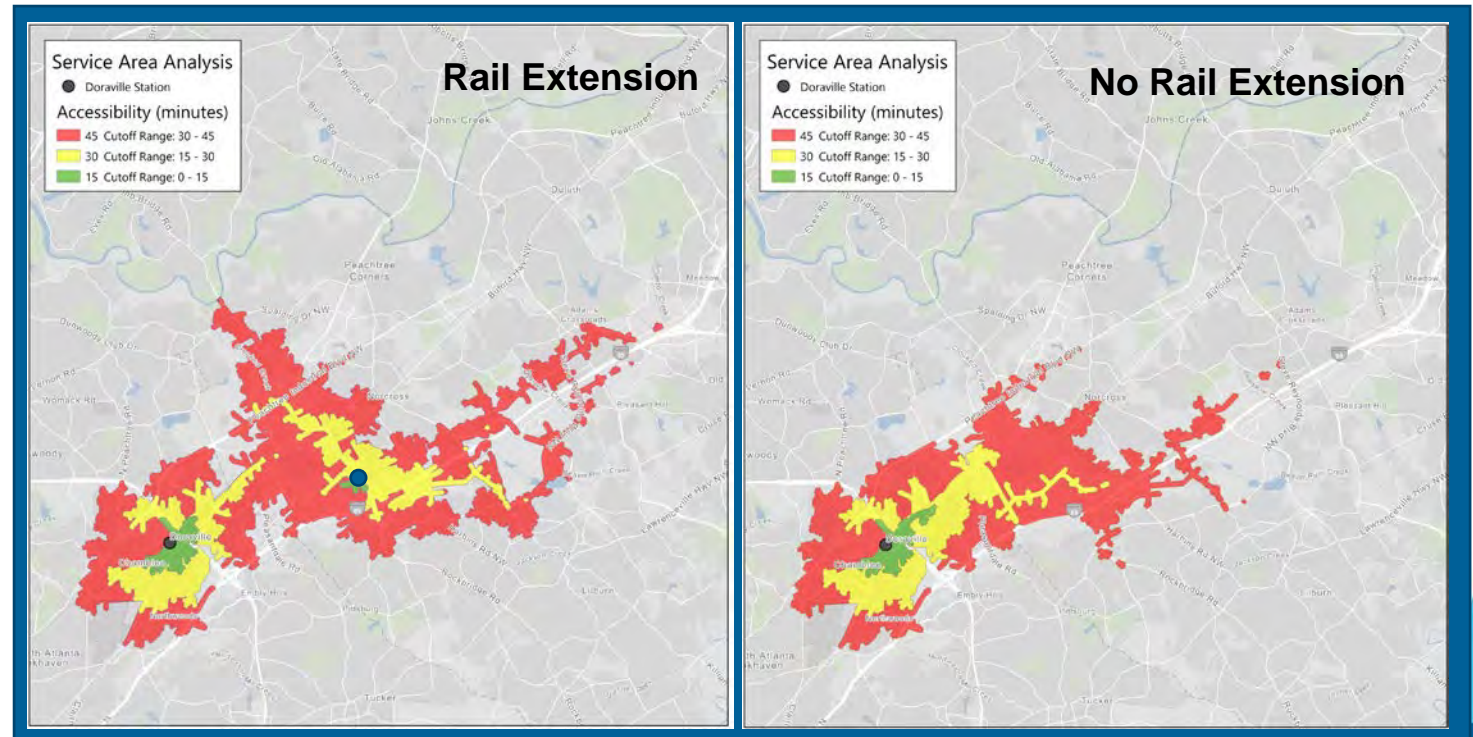
Total Plan Capital Cost: \$1,012,925,000

Net additional cost for Rail Extension = \$1,152,325,000

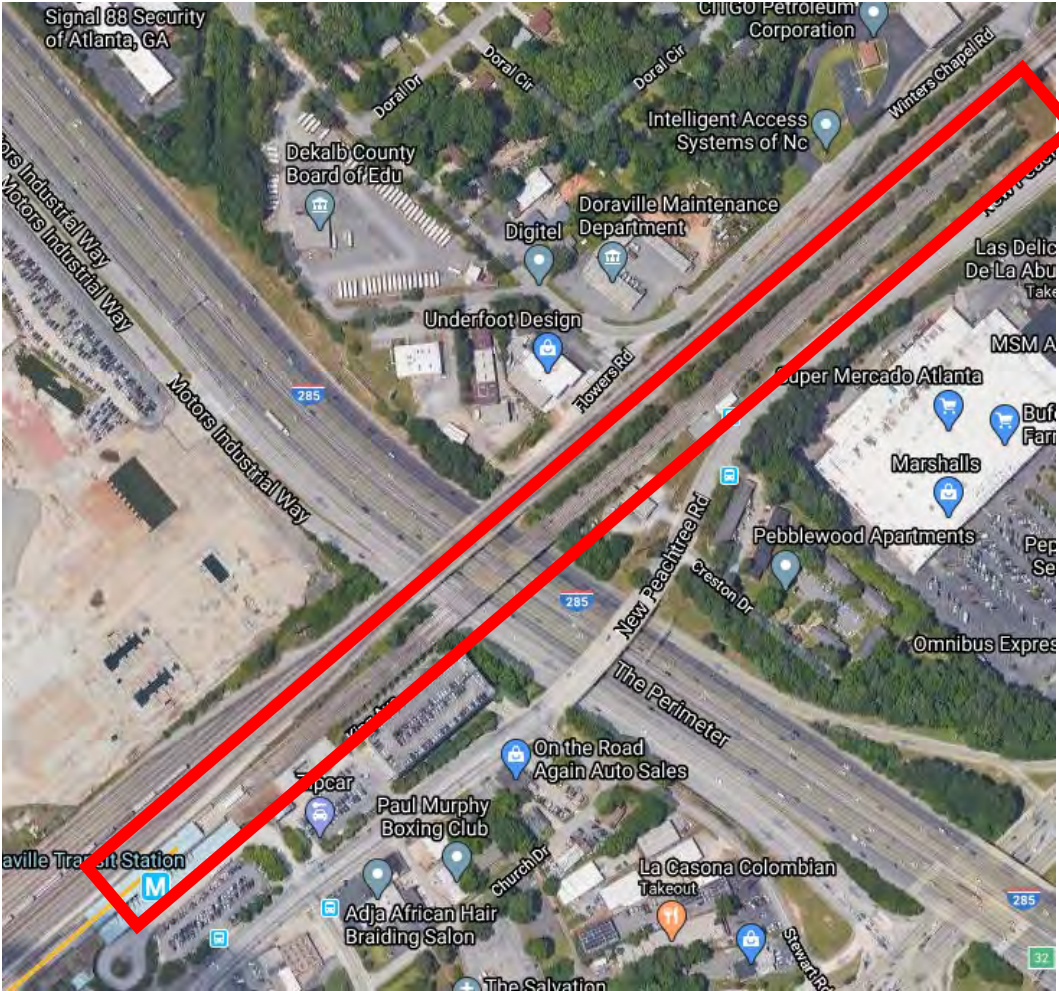
Other Considerations

- Rail travel time advantages to Multimodal Hub
- Expanded faster access to rail in Gwinnett County
- Allows for potential further expansion of rail to Gwinnett Transit Center

Transit Travel Times to Doraville Station



Doraville Station Rail Tail Track



BRT Extension Considerations

- Proposed I-285 Managed Lanes interchange at New Peachtree Rd may require significant additional cost for bus transit priority treatments



Projects from No-Rail Option

- Additional Local Routes
 - Downtown Buford (\$7M, long-range)
 - Loganville-Lawrenceville (\$67M, 10-year)
 - Loganville-Snellville (\$44M, 10-year)
- Additional Local Service Frequency (\$156M)
- Additional Flex (\$23M)
- Additional Paratransit (\$35M)
- Additional US-29 Investment (Rapid, including Capital and Operating) (\$228M)
- Additional BRT/Rapid Investments (excluding 700 and 209, O&M + Buses) (\$531M)

Note: All costs are in YOY cumulative through 2050 and reflect anticipated expenditures to County, net of all other funding sources



Questions/Discussion

